



# Explicit and Tactical RSVP-TE LSP Optimization

---

This chapter describes two RSVP-TE LSP optimization tools.

- The [Explicit RSVP-TE LSP Optimization](#) tool optimizes the placement of primary and secondary paths for selected RSVP LSPs.
- The [Tactical Explicit RSVP-TE LSP Optimization](#) tool is a subset of the functions in the Explicit RSVP-TE LSP Optimization tool for quicker mitigation of local congestion.

## Explicit RSVP-TE LSP Optimization

The Explicit RSVP-TE LSP Optimization tool minimizes congestion by optimizing the placement of primary and secondary paths for selected RSVP LSPs. By default, WAE Design minimizes the utilization across primary paths under normal operation and creates disjoint secondary paths so that a single failure cannot disrupt both paths simultaneously.

Select the Tools->Explicit LSP Optimization menu.

- Objectives for optimizing explicit RSVP LSP paths are specified in the [Primary Paths](#), [Secondary Paths](#), and [Tertiary Paths](#) sections of the dialog box.
- [Selections and Results](#), such as which interfaces and RSVP LSPs to operate on, whether to tag the new RSVP LSP routes, and whether to open plan files are specified in the lower, right section of the dialog box.
- [Further Optimization Details](#), such as how to handle non-optimized interfaces and whether to maintain or discard RSVP LSP properties, are set by clicking the Details button.

The default is to optimize utilization on all interfaces using all RSVP LSPs on those interfaces. Another default is to remove CSPF constraints, such as affinities and hop limits. For example, WAE Design sets the setup bandwidth to 0, thus providing the greatest flexibility when setting these explicit paths. Note that you can change these and other default behaviors.

Upon completion, WAE Design tags the RSVP LSPs with *expopt* and generates a new plan file named with an *-eopt* suffix. This plan file opens, showing the LSPs table that is filtered to these rerouted (and newly tagged) RSVP LSPs. Saving this plan file then simplifies the process of identifying which RSVP LSPs to reconfigure in the network.

WAE Design also writes a report containing the results of the optimization. To access this information later, select the Window->Reports menu.

## Primary Paths

This section of the dialog box enables you to specify objectives for primary path selections.

- Primary Paths—Define whether to reroute primary RSVP LSP paths.
  - Optimized—Create optimized explicit primary paths based on the objectives selected.
  - Keep—Route RSVP LSPs along the existing primary paths.

Primary paths are optimized using the following three objectives in order of priority. The first two objectives (1 and 2) move RSVP LSPs away from their shortest latency path in an attempt to reduce the utilizations of the most highly utilized interfaces in the network.

- 1. Minimize # of interfaces with utilization > [80] x% —Specify a percentage and minimize the number of selected interfaces with utilizations over that percentage under normal operation (default).
- 2. Minimize maximum interface utilization—Route primary paths so that the maximum interface utilization over all selected interfaces is minimized under normal operation.
- 3. Balance across equal latency paths—Balance utilizations over lower utilized interfaces. For example, use this option to balance utilizations on parallel interfaces between two nodes if the two interfaces have the same latency.
  - Utilization threshold—Keep the number of interfaces with utilization greater than this value as low as possible without significantly increasing the latencies of the primary paths.
  - Latency tolerance—Permit this percentage of additional latency.
- Enforce latency bounds—Enforce latency bounds that can be specified for some or all demands in the plan file. If selected, this option takes precedence over all of the above objectives. For information on setting latency bounds, see the [Plan Objects](#) chapter.

## Secondary Paths

This section enables you to specify objectives for secondary path selections.

- Secondary Paths—Define whether and how to route secondary paths.
  - Optimized—Create optimized explicit secondary paths based on the objectives selected.
  - Dynamic—Route secondary paths dynamically. No explicit hops will be created for the path.
  - None—No secondary paths are created; existing paths are removed.

- Hot Standby—Set the secondary path to be a *hot standby*, which means it is established at the same time as the primary path, rather than after the primary path fails.

For optimized secondary paths, the following three objectives are used in order of priority listed.

- 1. Maximize primary/secondary path disjointness with respect to—Define primary and secondary paths for each RSVP LSP that are disjoint with respect to circuit, SRLG, node, and Layer 1 (L1) link failures, depending on what is selected.
  - Circuits—No circuit is used by both the primary and secondary paths (default = 1).
  - SRLGs—No SRLG is used by both the primary and secondary paths (default = 2).
  - Nodes—No node is used by both the primary and secondary paths (default = 3).
  - L1 Nodes—No L1 node is used by both the primary and secondary paths (default = 3).
  - L1 Links—No L1 link is used by both the primary and secondary paths (default = 3).
  - Traffic disjointness only—A path is acceptable even if it uses similar circuits, SRLGs, or nodes as other paths provided there is no traffic routed over the RSVP LSP when failures occur.

You can specify the degree of disjointness of primary and secondary paths. The lower the number, the higher the disjointness priority. For example, if it is important that the paths are node disjoint and the SRLG disjointness are less important, you could change the setting to circuits 1, nodes 2, and SRLGs 3.

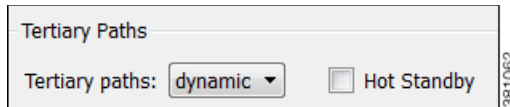
Note that the network topology sometimes makes it impossible to fulfill all the selected disjointness requirements. In this case, paths are selected that are maximally disjoint. That is, they are disjoint for as many circuits, SRLGs, nodes, L1 nodes, and L1 links as possible.

- Options 2 and 3 both operate on the selected failure scenarios (circuits, SRLGs, nodes, L1 nodes, and L1 links) listed in the “Failures to consider” options listed under 3. These choices are the failure scenarios over which the simulation is performed at the end of the optimization. Note that this selection of failure scenarios is distinct from the failure scenarios selected for the disjointness objective 1.
  - 2. Minimize # of interfaces with utilization > \_\_\_ % —Minimize the number of interfaces with utilizations over the specified percentage across all selected failure scenarios.
  - 3. Minimize maximum interface utilization—Minimize the maximum interface utilization over all interfaces and over all selected failure scenarios.

## Tertiary Paths

This section specifies the tertiary path configuration.

- Tertiary Paths—Define whether to create tertiary paths.
  - Dynamic—Create dynamic tertiary paths.
  - None—No tertiary paths are created.

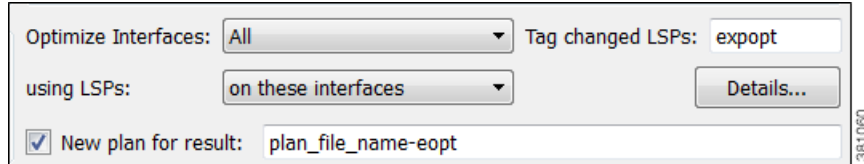


- Hot Standby—Set the tertiary path to be a hot standby path, which means it is brought up with the primary path, rather than after the primary path fails.

## Selections and Results

These options identify which interfaces are used, whether RSVP LSPs are tagged, and whether to create new plan files containing the results.

The default is to optimize RSVP LSP paths on all selected interfaces, and by default, all interfaces are considered selected. You can, however, optimize a limited number of interfaces or specify a set of RSVP LSPs by pre-selecting them or by using tags.



- Optimized Interfaces—Identify which interfaces to optimize: all interfaces, those selected prior to opening the dialog box, or those with specific tags.
- Using LSPs—Specify which LSPs are candidates for rerouting. The default is all the LSPs currently routed on the selected interfaces.
- Tag changed LSPs—Create and add tags to all LSPs rerouted during optimization. Using tags makes it easier to find the LSPs that need to be reconfigured in the actual network according to the optimization results. By default, newly optimized RSVP LSPs are tagged as *expopt*.
- New plan for result—This default option creates a new plan with the results of the optimization. Unless a name is specified, WAE Design attaches an *-eopt* suffix to the current plan file name. If not selected, WAE Design changes the current plan file with the updated information.

## Further Optimization Details

The Details button opens a dialog box wherein you can identify less frequently used parameters, such as traffic levels and how to treat non-optimized interfaces.

- Non-Optimized Interfaces—You can specify whether to ignore non-optimized interfaces or set the acceptable level of utilization for them.

If setting an acceptable utilization level and if both options are selected, WAE Design uses the higher of the two. These settings are calculated on a per-interface basis.

- Acceptable utilization of optimized interfaces: \_\_\_% —This value is the same as the utilization threshold set in the Primary Path section, option 1 (Minimize # of interfaces with utilization > \_\_\_%, where the default is 80). Therefore to change this value, you must change it in the Primary Path section.

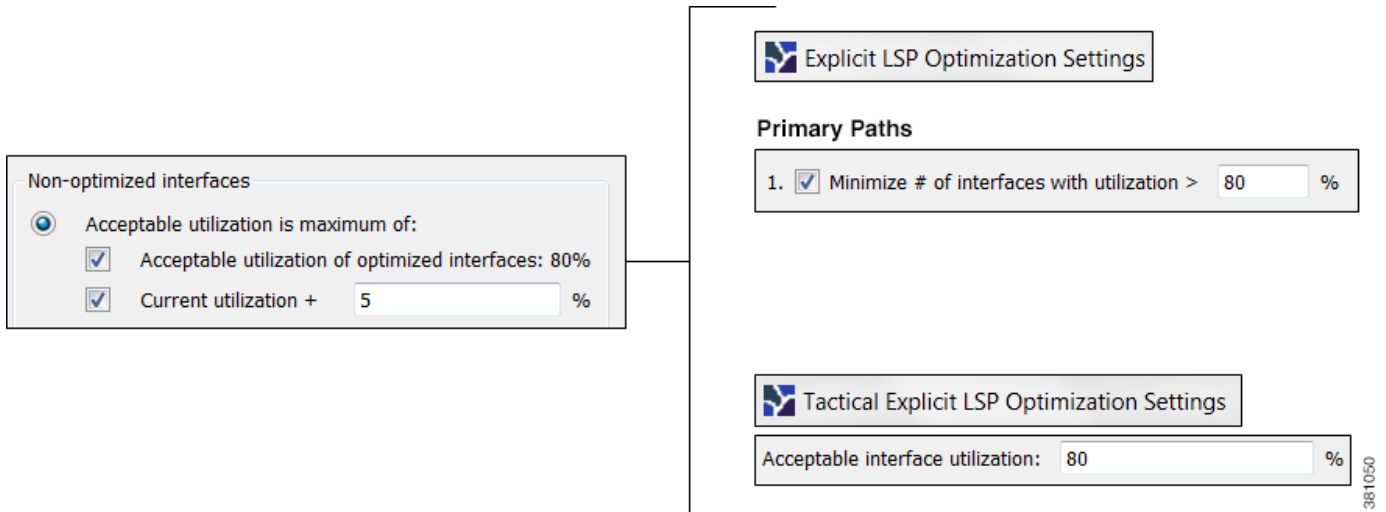
If using the Tactical Explicit RSVP-TE LSP Optimization tool, this field is equivalent to, and thus only changeable in, the Acceptable Utilization \_\_\_% field.

- Current utilization + \_\_\_% —Current utilization of non-optimized interfaces plus the added percentage.

**Example:** There are two non-optimized interfaces: cr1.chi\_cr1.mia has a utilization of 60% and cr2.sjc\_cr2.okc has a utilization of 78%.

The acceptable utilization settings for non-optimized interfaces are as follows.

- The primary path utilization threshold is 80%.
- The current utilization has 5% added to it.



**Result:** The maximum utilization for each interface is individually calculated. The acceptable level of utilization for cr1.chi\_cr1.mia is 80%, and the acceptable level of utilization for cr2.sjc\_cr2.okc is 83% (78 + 5).

- LSP Configuration, Create Fully Explicit Named Paths For—By default, WAE Design creates named paths across the RSVP LSPs that were selected if a reroute is required to achieve the optimization objectives. For instance, if a selected dynamically routed RSVP LSP has an acceptable route, WAE Design does not create a named path for it.

To change this default, select “all selected LSPs.” WAE Design then creates and routes fully explicit named paths for all selected RSVP LSPs.

- **LSP Configuration, In Addition**—By default, WAE Design sets the Setup BW to zero, providing the greatest flexibility when creating explicit routes. As well, all affinities and hop limits are removed, and the setup and hold priorities are set to 7. These changes apply only to the RSVP LSPs with newly created or changed explicit named paths.

You can turn off these defaults, and you can also set them individually after the optimization is performed using the LSP Paths Properties dialog box. (In the LSP Paths table, right-click an RSVP LSP path and select Properties.) If these defaults are turned off, the original parameters are preserved.

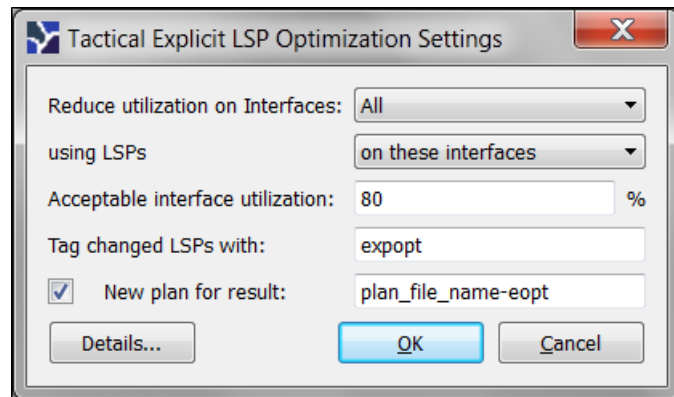
- **Traffic Level**—Select the traffic level you want used in the utilization calculations and optimizations. For information on traffic levels, see the [Traffic Demand Modeling](#) chapter.

- **Rerouting Preference**—By default, preferences on which RSVP LSPs to reroute are not based on traffic volume. You can select high-traffic or low-traffic options to sequentially give priority to RSVP LSPs with higher and lower traffic, respectively.

## Tactical Explicit RSVP-TE LSP Optimization

The Tactical Explicit RSVP-TE LSP Optimization tool is a reduced version of the Explicit RSVP-TE LSP Optimization tool. This tool optimizes only primary paths using the minimum number of path changes required to bring utilizations below an acceptable level. It is useful when you need to reduce congestion in a specific area of the network with a limited number of RSVP LSP reconfigurations.

As described in the [Selections and Results](#) section, if you need to target specific interfaces or RSVP LSPs to confine the optimization to problem areas., then select those interfaces or RSVP LSPs first. Then select the Tools->Tactical Explicit LSP Optimization menu.



- Acceptable interface utilization \_\_\_% — Maximum allowable traffic utilization on interfaces used in the optimization.
- Details button—See the [Further Optimization Details](#) section.
- All other options—See the [Selections and Results](#) section.

## Related Topics

- [MPLS Simulation](#) chapter
- [RSVP-TE Simulation](#) chapter
- [RSVP-TE Optimization](#) chapter
- [LSP Disjoint Path Optimization](#) chapter
- [LSP Loadshare Optimization](#) chapter
- [Plan Objects](#) (for creating tags)

