



Importing Objects

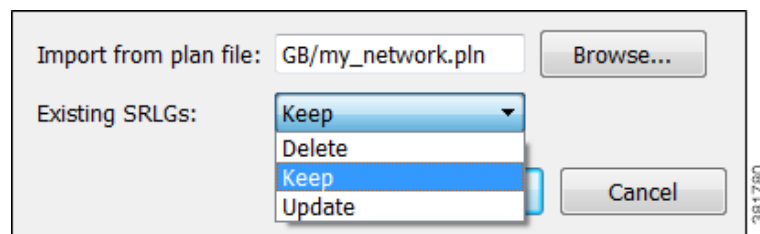
Creating a plan file for modeling purposes requires specifying a number of objects that cannot be discovered directly from the network. WAE Design enables you to import shared-risk link groups (SRLGs), a Layer 1 (L1) model, a QoS model, demand groupings, external endpoints, and tags from one plan file to another, all from the File->Import menu. You can also import demand groupings from a file containing a <DemandGroupings> table.

These import tools simplify and expedite the process of importing specific objects and models. For instance, if you want to copy an L1 model into an existing plan file, you could do so using the Copy from Template tool, which copies over more information than just the Layer 1 model. Using these import tools described in this chapter allows you to copy only what is necessary.

Import SRLGs

When importing SRLGs, you can combine the imported SRLGs with existing SRLGS as follows.

- Delete—Delete all existing SRLGs in the destination plan file. Copy all SRLGs from the source plan file.
- Keep—Do not delete SRLGs in the destination plan file. Copy only SRLGs from the source plan file that do not have the same name as SRLGs existing in the destination plan.
- Update—Do not delete SRLGs in the destination plan file. Copy all SRLGs from the source plan file. If the two plans have SRLGs of the same name, the SRLG in the destination plan is replaced.



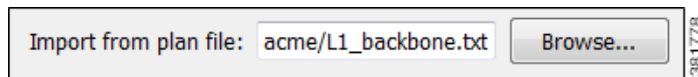
- Step 1** Select the File->Import->SRLGs menu.
- Step 2** Browse to or enter the full path of the plan file from which you are importing SRLGs.
- Step 3** Select how you want the existing SRLGs handled (Delete, Keep, Update), and click OK.

For More Information ...	See ...
SRLGs	<i>WAE Design User Guide</i>
import_srlgs CLI tool	import_srlgs Help Output

Import Layer 1

Importing a Layer 1 model imports all Layer 1 objects, including L1 nodes, L1 links, L1 circuits, L1 circuit hops, L1 ports, and L1 waypoints from one plan file to another.

- All L1 objects in the destination plan file are deleted and replaced by the newly imported L1 objects.
- If an L1 node exists in a site that also exists in the destination plan file, it is placed in that same site.
- If an L1 node exists in a site that does not exist in the destination plan file, the imported site is named after the imported L1 node.
- If the source plan file contains mappings between L3 circuits and L1 circuits, and if the destination plan file contains L3 circuits with the same key column definitions, these mappings are imported. The key columns are Node A, Interface A, Node B, and Interface B.



Step 1 Select the File->Import->Layer 1 menu.

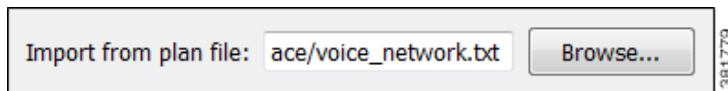
Step 2 Browse to or enter the full path of the plan file from which you are importing L1 objects, and click OK.

For More Information ...	See ...
Layer 1 objects and Layer 1 network simulation	<i>WAE Design User Guide</i>
import_layer1 CLI tool	import_layer1 Help Output

Import QoS Model

The QoS model consists of the mapping between service classes and interface queues, and service class policies.

- All service class policies in the destination plan file, as well as all mappings between service classes and interface queues, are deleted.
- Service classes that are assigned to demands in the destination plan and that are not contained in the source plan remain, but their mappings and policies are removed.



-
- Step 1** Select the File->Import->QoS Model menu.
- Step 2** Browse to or enter the full path of the plan file from which you are importing the QoS model, and click OK.
-

For More Information ...	See ...
QoS modeling, including service classes, service class policies, and interface queues	<i>WAE Design User Guide</i>
import_qos CLI tool	import_qos Help Output

Import Demand Groupings

Demand groupings define a group of demands and provide a convenient way of specifying aggregated traffic in a plan, which can be used as a basis for growth forecasting.

When importing demand groupings, you have the option of importing demand groupings from either another plan file or from a file containing a <DemandGroupings> table. You can combine the imported demand groupings with existing demand groupings as follows.

- **Delete**—Delete all existing demand groupings in the destination plan file. Copy all demand groupings from the source file.
- **Keep**—Do not delete demand groupings in the destination plan file. Copy only demand groupings from the source file that have different names than those in the destination plan.
- **Update**—Do not delete demand groupings in the destination plan file. Copy all demand groupings from the source file. If the two plans have demand groupings of the same name, the demand grouping in the destination plan is replaced.

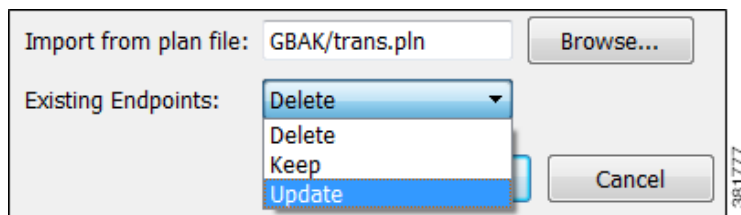
-
- Step 1** Select the File->Import->Demand Groupings menu.
- Step 2** Select one of these import methods.
- Browse to or enter the full path of the plan file from which you are importing a demand grouping.
 - Browse to or enter the full path of the file containing the <DemandGroupings> table you are importing.
- Step 3** Select how you want the existing demand groupings handled (Delete, Keep, Update).
- Step 4** Select whether to import tags for sites, nodes, AS's, and demands, and click OK.
-

For More Information ...	See ...
<ul style="list-style-type: none"> • Demands • Demand Groupings 	<i>WAE Design User Guide</i>
<DemandGroupings> table	<i>WAE Plan Table Schema and CLI Reference</i>
Create demand groupings	<i>WAE Design User Guide</i> insert_demand_grouping_mesh Help output
Demand grouping traffic	<i>WAE Design User Guide</i> import_demand_grouping_mesh Help output
Use demand groupings in growth plans	<i>WAE Design User Guide</i> create_growth_plans Help output

Import External Endpoints

When importing external endpoints, you can combine them with existing external endpoints as follows.

- **Delete**—Delete all existing external endpoints in the destination plan file. Copy all external endpoints from the source plan file.
- **Keep**—Do not delete external endpoints in the destination plan file. Copy only external endpoints from the source plan file that do not have the same name as external endpoints existing in the destination plan.
- **Update**—Do not delete external endpoints in the destination plan file. Copy all external endpoints from the source plan file. If the two plans have external endpoints of the same name, the external endpoint in the destination plan is replaced.



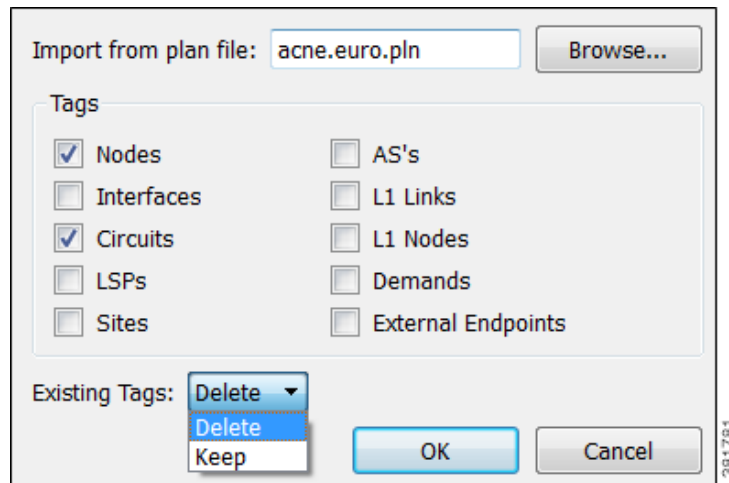
-
- Step 1** Select the File->Import->External Endpoints menu.
- Step 2** Browse to or enter the full path of the plan file from which you are importing external endpoints.
- Step 3** Select how you want the existing external endpoints handled (Delete, Keep, Update), and click OK.
-

For More Information ...	See ...
External endpoints	<i>WAE Design User Guide</i>
import_external_endpoints CLI tool	import_external_endpoints Help output

Import Tags

When importing tags, you can keep or delete existing tags as follows.

- **Delete**—Delete all existing tags in the destination plan file. Copy all tags from the source plan file.
- **Keep**—Do not delete tags in the destination plan file. Copy only tags from the source plan file that do not have the same name as tags existing in the destination plan.



-
- Step 1** Select the File->Import->Tags menu.
- Step 2** Browse to or enter the full path of the plan file from which you are importing tags.
- Step 3** Select one or more object types for which you are importing tags.
- Step 4** Select how you want the existing tags handled (Delete, Keep), and click OK.
-

For More Information ...	See ...
Tags	<i>WAE Design User Guide</i>
import_tags CLI tool	import_tags Help output

Related Topics

- [Importing Traffic and Growth Rates](#) chapter
- [Importing Offline Discovery](#) chapter
- *WAE Plan Table Schema and CLI Reference*
- *WAE Design User Guide*

