



User Interface

This chapter is a basic framework for understanding how to use the WAE Design GUI.

- [Main Window](#)—Defines what a plan file is and how to access one
- [Main Window](#)—Overall structure of the GUI
- [View Plots](#)—Network, site, interface, demands, LSPs
- [Objects](#)—Describes what a WAE Design object and property are
- [Tables](#)—How to use and manipulate tables
- [Log and Report Windows](#)—How to access log windows and reports

Start WAE Design

Use one of the following methods to start WAE Design from the directory in which the WAE Design software is installed.

- Double-click the `mate` executable. To verify the version number, select the Help->About menu. This should match the version selected when you installed the product from cisco.com.
- From the CLI, enter the `mate` command and press Enter (Return).

Optional: On Windows, you can associate the plan file using the `.pln` format with the `mate` executable. Double-clicking a `.pln` file opens the plan in a new instance of the GUI.

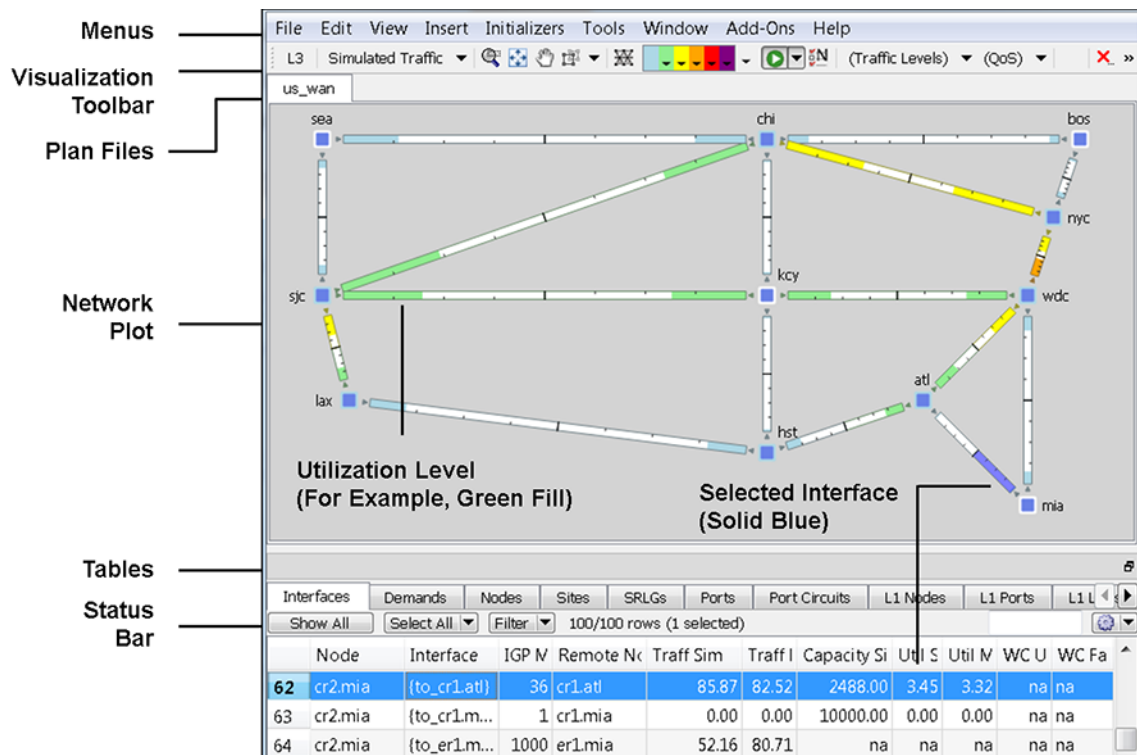
Main Window

The WAE Design GUI is divided into the following primary sections. [Figure 3-1](#) shows the GUI with a sample `us_wan.txt` plan in the network plot area.

- **Menu**—Menu selections for network modeling, simulation, and optimization.
- **Visualization toolbar**—Drop-down lists and icons that control how the network is displayed. For more information, see the [Visualization Toolbar](#) section.
- **Plan file tabs**—Identify which plan is currently opened. There can be multiple plans open; the tab with a white background is the active plan. To bring a plan to the forefront and make it the active plan, click its associated tab.

- Network plot—Displays a visual representation of the network topology. The color on each interface represents the percentage of traffic utilization on that interface. Rows that are selected in the tables, such as demands or interfaces, are highlighted in the plot with additional graphical attributes. For more information, see the [View Network Plots](#) section.
- Tables—Display network properties, including both measured and simulated information, for the network plan. For a list of default tables and information on how to interact with tables within the GUI, see the [Tables](#) section.
- Status Bar—Identifies the network simulation mode.
- Context menus—Enable you to right-click anywhere to view a list of actions that you can take. For more information, see the [View Related Information](#) section.

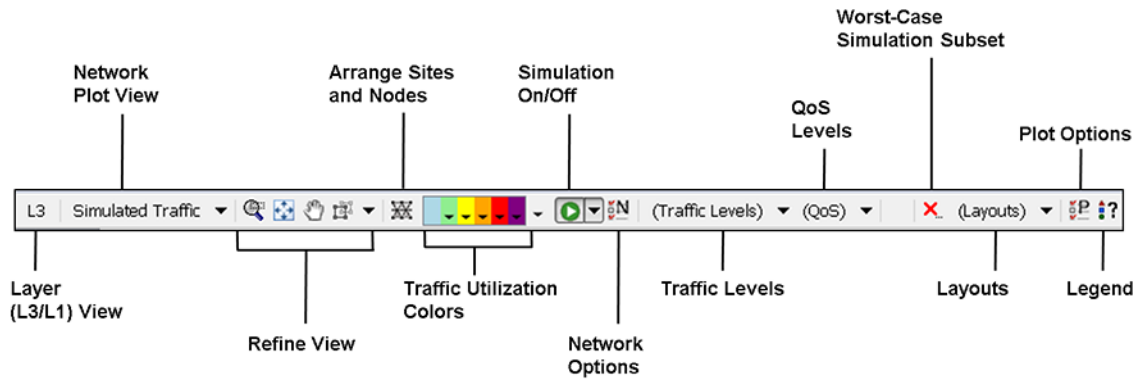
Figure 3-1 WAE Design User Interface



Visualization Toolbar

The Visualization toolbar ([Figure 3-2](#)) provides a convenient way to change the visual aspects of the network plot.

Figure 3-2 Visualization Toolbar



- Layout—A toggle button to change the view between Layer 3 (L3) and Layer 1 (L1). Note that you can also simultaneously view L3 and L1 networks. This is set in the Layer 1 tab of the Plot Options. For more information, see the [Layer 1 Simulation](#) chapter.
- Network Plot—A drop-down menu from which you choose the type of traffic displayed in the plot. For more information, see the [View Network Plots](#) section.
- Refine View icons—These icons enable you to refine and enhance your view in both in the network plot and in the site plots. For information, see the [Refine Viewable Objects](#) section.
- Arrange icon—Opens an Arrange palette that enables you to move selected nodes and sites into a selected schematic alignment.
- Utilization Color—Traffic utilizations are displayed by colors as a percent of available capacity used on that interface. This enhances the other visual cues, which is the length of the fill. You can change the colors and the utilizations they represent. For more information, see *WAE Network Visualization Guide*.

**Note**

All traffic is displayed in Mbps. In the network plot, the traffic utilization colors represent outbound traffic.

- Simulation On/Off (white arrow in green circle) icon—By default, any change that voids the current simulation automatically triggers a resimulation. For instance, changes in topology trigger a resimulation. To turn off this resimulation, select the drop-down arrow next to the icon and deselect the “Auto resimulate” option. To turn it back on, reselect the this option.
- Network Options icon—Enables you to set global simulation modes, such as Full Convergence or Fast Reroute for MPLS, and whether to include multicast hops. You can also set IGP, BGP, and Multicast protocol options.
- Traffic Level—Drop-down menu of user-defined traffic levels in the plan. For more information, see the [Traffic Demand Modeling](#) chapter.
- QoS Level—Drop-down menu allowing the display of service classes, interface queues, and undifferentiated traffic. From the Manage QoS option, you can add/edit service classes, assign service classes to queues, and add/edit service policies. For more information, see the [Quality of Service Simulation](#) chapter.

- Worst-Case Simulation Subset (red X) icon—After a simulation analysis is performed over a specified set of failure scenarios (for example, circuits, nodes, and ports), you can click this icon to select which subset of these failure scenarios (for instance, circuits only), as well as service classes you want included in the worst-case analysis. This avoids having to run a second simulation analysis.
- Layouts—Drop-down menu of user-defined plots. For example, you might have schematic layouts, geographic layouts, street map layouts, separate layouts for different continents, simplified layouts with hidden nodes or sites, or other representations of the network. For more information, see the *WAE Network Visualization Guide*.
- Plot Options icon—Enables you to customize circuit width, text on interfaces, layouts (such as background images and geographic views), and other plot options. For more information, see the *WAE Network Visualization Guide*.
- Legend (question mark) icon—Displays a legend of icons and line types in the plot and their meanings. For more information, see the [Plot Legend for Design Layouts](#) chapter.

View Plots

WAE Design opens to the main network plot. Although WAE Design shows only the sites in the network plot and tables, you can view those sites in more depth. You can also view more depth of interfaces and demands in their respective plots. In addition to these plot views, you can create and view layouts that show only those portions of the network plot that you choose. For more information, see the *WAE Network Visualization Guide*.

View Network Plots

The network plot, also referred to simply as the *plot*, is the main area showing the network topology. It can contain both sites and nodes.

There are multiple network plot views available (top left of [Figure 3-2](#)). The default view is Simulated Traffic. To change the view, select it from the Network Plot View drop-down list in the far, left Visualization toolbar.

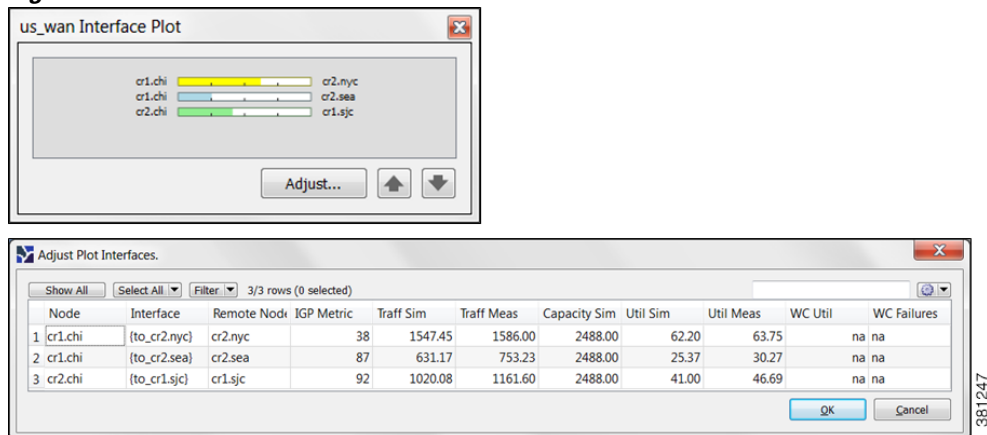
- Simulated Traffic—View of simulated traffic that can be used for capacity planning, what-if analysis, and failure planning. Circuits are sized proportional to their capacity. Interfaces are colored according to the percentage of simulated traffic (in comparison to available capacity as defined by the size of the interface or the QoS bound).
- Measured Traffic—View of traffic as measured from live views of the network. Circuits are sized proportional to their capacity. Interfaces are colored according to the percentage of measured traffic (in comparison to available capacity as defined by the size of the interface or the QoS bound).
- Worst-Case Traffic—Interfaces are colored to show the maximum utilization of the interface over all failure scenarios as defined by the most recently run simulation analysis. For more information, see the [Simulation Analysis](#) chapter.
- Failure Impact—Interfaces and nodes are colored to indicate how a failure of that interface or node would impact other interfaces and nodes. For more information, see the [Simulation Analysis](#) chapter.
- LSP Reservation—Circuits are sized proportional to their LSP reservable bandwidth. Interfaces are colored according to the percentage of bandwidth (in comparison to what is reserved for the LSP). For information, see the [RSVP-TE Simulation](#) chapter.

- To vertically move the interface list within the plot, click the up and down arrows.
- To view a table of the selected interfaces, click the Adjust button. A new Interfaces table appears.
- To sort the interfaces by ascending or descending order, follow these steps. The interface plot displays the interfaces according to the sort.

Click the Adjust button.

Click a column heading to toggle its sorting between ascending or descending order. Click OK.

Figure 3-4 Interface Plot



Objects

Other than a site, an *object* is a representation of elements found in live networks, such as nodes (which represent routers), circuits, interfaces, LSPs, and more. A site is also an object, and is a WAE Design construct for simplifying the visualization of a network by grouping nodes within a site, or even by grouping sites within a site.

Objects have *properties* that identify and define them, many of which are discovered, though they can also be manually added and changed. For example, all circuits have a discovered Capacity property that can be edited. Other properties are derived. For example, Capacity Sim is derived from the Capacity property. Another example is that interfaces have a Util Sim property that identifies the percentage of Capacity Sim the simulated traffic is using. Properties are viewable and editable through an object's Properties dialog box (right-click the object and select Properties). They are also viewable as table columns.

For more detailed information on object creating and editing, see the [Plan Objects](#) chapter.

Object Selections

Objects are selectable through tables and plots. However, not all objects are selectable from both, though most are. Some object types are only selectable through their tables, such as LSPs.

All selections made in a plot appear in the associated table and vice versa ([Table 3-1](#)). Likewise, changes made in the plot are reflected in the tables, and vice versa. Hidden objects are excluded from the selection.

Table 3-1 assumes that all objects are in the foreground. For information on selecting objects that are in the foreground versus background, see the [Refine Viewable Objects](#) section.

Table 3-1 **Select Objects**

To...	Do This...
Site Selections	
<ul style="list-style-type: none"> If the object you select is a site, then none of the child objects (child sites, nodes, and circuits) are selected. To select a site and all objects contained within it, press and hold the Alt key during the selections identified in this table. 	
Examples	
<ul style="list-style-type: none"> To select only a site, click it. To select a site and all of its nested child objects, press and hold Alt while clicking the site. To select only two sites, click one object and then Ctrl-click each site that you want to select. To select two sites and all the objects they contain, press and hold both Alt and Ctrl while selecting both sites. To select all sites in the plan file, press Ctrl-A in either the network plot or the Sites table. To select all sites and all objects they contain, press and hold Alt and Ctrl-A together in either the network plot or the Sites table. 	
Select an object. If other objects were selected prior to this new selection, those objects become deselected.	Click one or more objects in any plot or table.
Select multiple objects.	Do one of these steps. <ul style="list-style-type: none"> In a plot or table, click and hold while you drag the cursor across any objects or rows you want included in the selection. In a plot or table, click one object and then Ctrl-click each object that you want to select.
Select all objects.	Do one of these steps. If you are selecting from a plot, all objects in that plot are selected. If you are selecting from a table, all objects within that table are selected. <ul style="list-style-type: none"> Press Ctrl-A in either the network plot or a table. (Cmd-A on Mac.) Click and hold while you drag the cursor over an entire plot or through the entire list in a table.
Clear the entire selection.	Do one of these steps. <ul style="list-style-type: none"> Select the Select All -> Clear Selection in the table control menu. This deselects all objects within that table. If objects in other tables are selected, they remain selected. Click anywhere in any plot. This deselects all objects in that plot and in the associated table.
Invert the current selection (everything selected becomes deselected and vice versa).	<ol style="list-style-type: none"> Show the table whose selections you want to invert. Select the Select All -> Invert Selection from the table control menu.

Filter to Selected Objects

To filter only to the selected objects, select one or more objects from any plot or table, then select Filter->Filter to Selection. Alternatively, you can press and hold Ctrl-Shift (Cmd-Shift on Mac), and then double-click.

As with other object selections, to include the nested objects for site selections, add Alt to the selection process. For example, press and hold Alt while selecting one or more sites, and then select Filter->Filter to Selection.

Filter to Nested or Parent Objects

If a site contains multiple levels of child sites, you can filter to those nested objects. Right-click a site, and select Filter to Contained <Object> and then select one of the following, where <Object> equals sites, nodes, or L1 nodes.

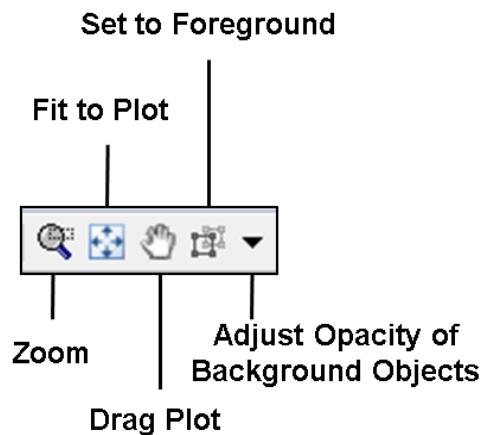
- Direct—To see only the objects immediately contained within the site.
- All—To see all contained objects, no matter how deeply nested they are within child sites.

If a site contains only one level, the context menu changes to reflect as such.

Conversely, you can find a parent site for any given node. Select it, and then select Filter to Sites.

Refine Viewable Objects

View icons are available both in the network plot and in the site plots. Each of these icons make it easier to find what you need.



407029

Except for Set to Foreground, when accessed through the Visualization toolbar, the view changes are applicable only to the network plot. When accessed through a site plot, the Zoom, Fit-to-Plot, and Drag actions apply only to that site plot.

Both the Zoom and Set to Foreground icons enable you to better focus and work in specific plot areas.

- Zoom—Enables you to drag in the area that you want enlarged to fit the entire plot.

Shortcut = Press the letter “z,” which toggles this functionality on and off.

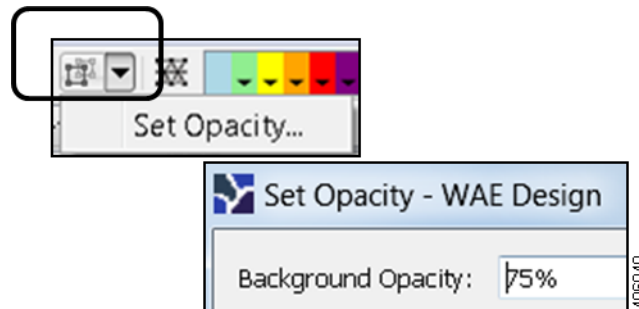
To escape from the Zoomed view, press Esc.

- **Fit-to-Plot**—Resizes the diagram to fit within and fill the plot area.
Shortcut = Press the letter “f,” which toggles this functionality on and off.
- **Drag Plot**—Enables you to move the cursor over any portion of the plot to drag it to a different location.
Shortcut = Press the letter “d” or press the icon again to toggle this functionality on and off. The feature remains enabled until you turn it off.
To escape from the Drag option, either press Esc or click the icon to toggle it off.
- **Set to Foreground**—Brings selected objects to the foreground for improved viewing while sending all other objects to the background where they appear as if they are transparent. Selected objects must be L3 nodes, L3 circuits, sites, L1 nodes, or L1 links. This feature does not apply to other objects, such as demands, LSPs, L1 circuits, and L1 circuit paths.
To escape the Set to Foreground option, click the icon to toggle it off while objects are selected.

To increase or decrease the transparency (opacity) of how well the background objects appear, select the drop-down arrow next to the Set to Foreground icon. Enter the desired value, and click OK. The higher the value, the denser (darker) the background objects appear.

**Note**

If you are viewing both L3 and L1 objects, this opacity value for background objects takes precedence over the layout opacity value that is set for viewing different layers.



Set Foreground and Background Preferences

To set foreground and background preferences, select the View->Preferences menu.

- **Enable Selection of Background Objects**—If this is enabled (selected), then you can select objects in the background. Otherwise, you cannot do so.
- **Fit to Screen Zooms to Foreground Objects**—If this is enabled (selected), then clicking the Fit-to-Plot icon zooms into and centers the selected objects. Otherwise, the plot itself is centered.
- **Save Preferences**—Save all view and tooltip preferences for all layouts when you save the plan file.

View Related Information

Tooltips

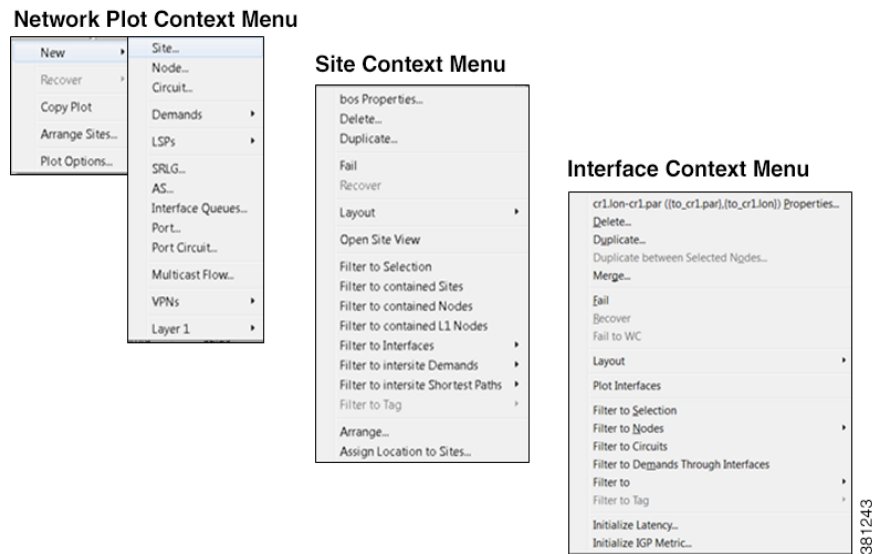
One method of seeing related information about an object is to show the tooltips and then hover the mouse over a site, node, L1 node, interface, or L1 link. For instance, hovering over a site you can see the number of contained L3 nodes, L1 nodes, and sites, as well as the total number of interfaces connected to the contained L3 nodes. To toggle this tooltip on or off, select the View->Preferences->Show Tooltips.

Context Menus

WAE Design has a hidden menu called a *context menu* (Figure 3-5). Anywhere that you right-click, whether it is in an empty area in the plot, on an object in the plot, on a table tab, or on a column or row in a table, a context menu appears giving you available options based on where you clicked. The only areas this context menu does not apply is in the main menus and in the Visualization toolbar.

The most common use case for context menus is for filtering to related objects. For example, to find the L1 circuits mapped to an L3 circuit, right-click the L3 circuit and select Filter to L1 Circuits from the context menu. You can select multiple objects and right-click just one to find the related information for all selected objects. If needing to see only selected objects in a table, right-click one of the selected objects and select Filter to Selections.

To access a context menu, right-click any empty area of a plot or right-click one or more objects from the network plot or table. If in a site, an interface, or a demand plot, the actions taken affect the network plot.

Figure 3-5 Examples of Context Menus

Tables

The tables that are viewable from the WAE Design GUI display a series of rows and columns, wherein the rows are objects and the columns are properties (Figure 3-6). Plan files also contain other tables that are not viewable from the GUI. These tables contain more complex information, such as showing complex relationships between objects. If you open a plan file using a .txt editor, each table is labeled with angle brackets, such as <Nodes> and <Sites>.



Note

For detailed information about plan files and tables, as well as information on creating user-defined columns and tables, see the *WAE Design Integration and Development Guide*.

Common Tables

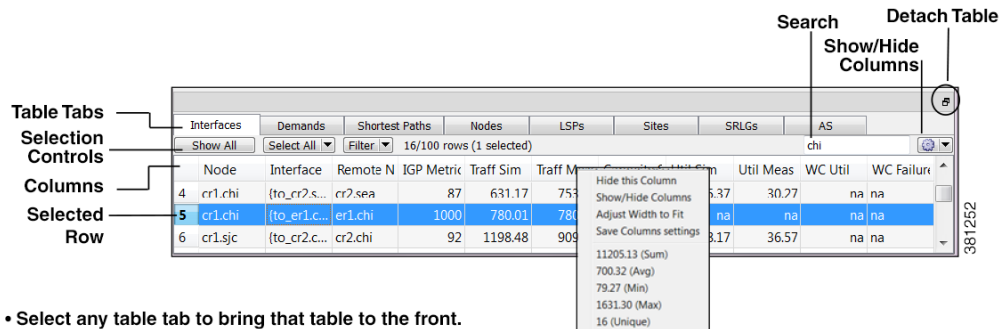
There are numerous tables available for specialized purposes, such as Multicast, P2MP LSPs, and Ports default. The tables listed below are the most commonly used and are the defaults. For information on showing and hiding tables, see [Show or Hide Tables or Columns](#).

To bring a table to the forefront and make it the active table, click its associated tab. For example, to open the LSP table, click the LSP tab.

- Interfaces—A list of the interfaces in the network.
- Demands—A list of the demands in the network. Each demand specifies how much traffic is routed from a source (node, external AS, or external endpoint) to a destination (node, external AS, external endpoint, or multicast flow destination).
- Shortest Path—A list of the routes between selected sites.
- Nodes—A list of network routers, which typically have names that suggest their location and function. For example, node cr1.atl is core router 1 in the Atlanta site.

- LSPs—A list of MPLS LSPs in the network; each LSP contains both a source and destination. Note that sub-LSPs within point to multipoint (P2MP) LSPs are listed in the LSP table.
- Sites—A list of network sites.
- SRLGs—A list of the shared risk link groups (SRLGs); an SRLG is a group of objects that might all fail due to a common cause.
- AS—A list of both internal and external autonomous systems (AS's). An AS is a collection of connected IP routing prefixes that are controlled by one operator.

Figure 3-6 Common Table Functions



- Select any table tab to bring that table to the front.
- Right-click on any table tab to hide that table or add new tables.
- Right-click on any column (or click wheel icon) to hide that column or add new columns for that table, and to view other variables related to the column, such as average values.
- Click on any column to toggle its sort between ascending and descending order.
- Enter text or numbers in the Search field to find a matching string for that table.

Show or Hide Tables or Columns

Table 3-2 Show or Hide Tables or Columns

To...	Do This...
Show or hide one or more tables.	<ol style="list-style-type: none"> 1. Do one of these two steps. <ul style="list-style-type: none"> – Select View->Tables->Show/Hide Tables. – Right-click any table tab and select Show/Hide Tables. 2. Toggle the tables you want to show to T (true) and the ones you want to hide to F (false). 3. Click OK.
Hide a single table.	Right-click any table tab and select Hide this Table.

Table 3-2 Show or Hide Tables or Columns

To...	Do This...
Show or hide one or more columns.	<ol style="list-style-type: none"> Do one of these steps. <ul style="list-style-type: none"> Select View->Tables->Show/Hide Columns. Right-click any column heading and select Show/Hide Columns. Click the wheel icon in the table area. Toggle the columns you want to show to T (true) and the ones you want to hide to F (false). Click OK.
Hide a single column.	Right-click any column heading and select Hide this Column.

Search and Filter in Tables

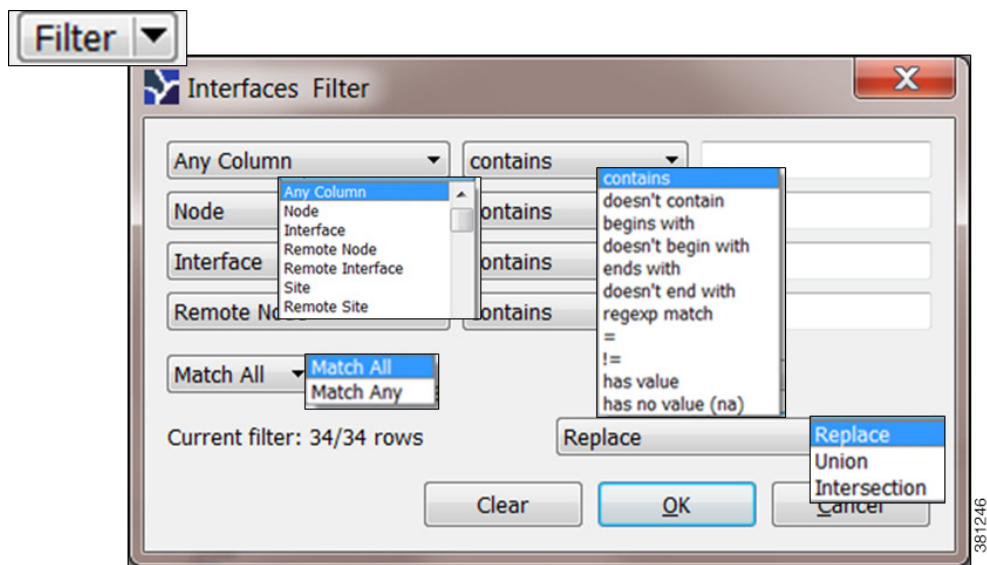
Most WAE Design tables, whether below the network plot or with dialog boxes, have an empty Search field in the top right as shown in [Figure 3-6](#). Likewise, they usually have a Filter control menu that opens a Filter dialog box specific to that table. [Figure 3-7](#) is an example of an Interfaces Filter dialog box.

Table 3-3 Use Table Search and Filter Features

To...	Do This...
Search for objects that match a specific string.	<ol style="list-style-type: none"> If you are not in a dialog box, show the table whose objects you want to search. In the Search field, enter a search string and press Enter.
Filter the table to a list of specific search values, and either replace, add to, or narrow the list of objects currently showing in a table.	<ol style="list-style-type: none"> If you are not in a dialog box, show the table whose objects you want to filter. Click the Filter control menu button (Figure 3-7). Choose from the drop-down lists and enter search criteria. If you are filtering by more than one criterion, you can optionally use these controls. <ul style="list-style-type: none"> Select Match All to filter to only those rows that match all the specified criteria (default). Select Match Any to filter to rows that match any one of the criteria. Select whether to replace, add to, or narrow the list of objects currently showing in a table. <ul style="list-style-type: none"> Replace—Replace objects showing in the table with those found in the search (default). Union—Add the objects found to those showing in the table. Intersection—Filter to (search for) objects only within those objects that are currently showing in the table.

Table 3-3 Use Table Search and Filter Features

To...	Do This...
Filter the selection to associated objects. For example, you might want to filter a circuit to associated interfaces.	Select the Filter -> Filter to X control menu, where X is a name of a viable object.
Toggle whether to change the filter selection with or without first asking.	Select the Filter -> Interaction with current filter -> X, where X is either Always Ask or Replace.

Figure 3-7 Interfaces Filter

Save Table Settings or Return to Defaults

Table 3-4 Save Table Settings or Return to Defaults

To...	Do This...
Save table and column settings.	Select View->Tables->Save All Settings
Save table settings.	Do one of these steps. <ul style="list-style-type: none"> • Select View->Tables->Show/Hide Tables. • Right-click any table tab and select Save Table Settings.
Save column settings.	<ol style="list-style-type: none"> 1. Show the table whose column settings you want to save. 2. Do one of these steps. <ul style="list-style-type: none"> – Select View->Tables->Show/Hide Columns. – Right-click any table tab and select Save Column Settings.
Restore all table and column settings to system defaults.	Select View->Tables->Reset All.

Table 3-4 Save Table Settings or Return to Defaults

To...	Do This...
Resize column widths.	<ol style="list-style-type: none"> 1. Show the table whose column settings you want to save. 2. To adjust the column width to that of the longest variable, right-click the column heading, and select Adjust Width to Fit. <p>To adjust the column width to any desired size, click and drag the column heading edge to any size.</p>
Restore column widths to their original size.	<ol style="list-style-type: none"> 1. Show the table whose column widths you want to restore. 2. Select View->Tables->Reset Column Widths.

Other Table Actions

Table 3-5 Miscellaneous Table Tools

To...	Do This...
Show all objects for a table within the plan.	<ol style="list-style-type: none"> 1. Show the table whose objects you want to see. 2. Click the Show All control button.
Toggle the columns to sort in ascending or descending order.	Click a column heading.
View the sum of the values in a column, the average, the minimum, and the maximum.	Right-click a column heading.
View how many entries in a column are unique.	Right-click a column heading.
Resize column widths.	<ul style="list-style-type: none"> • To adjust the column width to that of the longest variable, right-click the column heading, and select Adjust Width to Fit. • To adjust the column width to any desired size, click and drag the column heading edge to any size.
Restore column widths to their original size.	<ol style="list-style-type: none"> 1. Show the table whose column widths you want to restore. 2. Select View->Tables->Reset Column Widths.
Detach the table from the plot.	<p>Do one of these steps.</p> <ul style="list-style-type: none"> • Click and hold the empty gray area above the table while you drag it to a different location. • Click the double-page icon in the right of that same gray area.
Re-attach the table to the plot.	Click and hold the empty gray area above the table while you drag it to the bottom of the plot. When an empty blue area appears, release the mouse button.

Log and Report Windows

The following additional windows are displayed using menu items or after running tools.

- Log window—This window appears automatically when warnings or errors are logged. You can view these by selecting the Window->Log Window menu.
- Reports—Reports are generated through the Tools->Reports menu, as well as automatically when running certain tools such as Simulation Analysis. The report window appears at that time, and is accessible later by selecting the Window->Reports menu. For more information, see the [Reports](#) chapter.

Related Topics

- [Plan Objects](#) chapter
- [Plot Legend for Design Layouts](#) chapter
- *WAE Network Visualization Guide*
- *WAE Design Integration and Development Guide*