



## Deploying Activation Workflows to Devices Using Transaction Manager

---

The following topics explain how to use the Transaction Manager to deploy activation workflows (transactions) to devices:

- [What is Transaction Manager?, page 5-1](#)
- [Setup Tasks for Transaction Manager, page 5-2](#)
- [Steps for Creating and Deploying Transactions, page 5-2](#)
- [Transaction Manager Window and Repository, page 5-3](#)
- [Creating Transactions Using the Prime Network XDE SDK, page 5-4](#)
- [Importing Transactions Into Prime Network, page 5-4](#)
- [Previewing and Executing Transactions, page 5-4](#)
- [Finding and Controlling Transaction Jobs, page 5-8](#)

### What is Transaction Manager?

Transaction Manager provides a GUI framework you can use to schedule and run *transactions* (workflows) that are created using the Prime Network XDE Eclipse SDK. You can also run transactions using the NBI.

Transactions are XDE procedures that contain tasks that are grouped together and specified into a flow, with certain sequences, branches, and failure policies (including rollback procedures). Transactions can include commands that you created using Command Manager or Command Builder. To include Command Builder commands, you need to perform the tasks outlined in the required extensions to the XDE Eclipse SDK (which has special features to work with Command Builder scripts).

Transaction rules, parameters, and implementation are stored on the gateway. Transactions (XDE procedures) are saved as archive files (.jar) and maintained at `XMP_HOME/xmp_inventory/xde-home/packages/site`. Jobs are also stored on the gateway and are purged according to the global settings in Prime Network.

## Setup Tasks for Transaction Manager

Before you use Transaction Manager, check the Administration GUI client settings that controls whether users must enter their credentials before running transactions that include command scripts.

A user must have Administrator or Configurator privileges to run transactions. If per-user job authorization is enabled, Administrator and Configurator users must also be granted job privileges. The following table explains this and other global settings that can affect the transactions function. (These are in the Administration GUI client under **Global Settings > Security Settings > User Account Settings**.)

Administration GUI Client Global Setting	Description
Job Scheduling	<p>Enables and disables the global per-user job authorization mode. If the mode is enabled, job scheduling privileges are controlled by the setting in the individual user accounts.</p> <ul style="list-style-type: none"> <li>• If this mode is enabled and an Administrator or Configurator user is granted privileges, they can schedule jobs across the product.</li> <li>• If this mode is enabled and an Administrator or Configurator user is not granted privileges, the job scheduling features in their GUI clients are disabled.</li> </ul>
Execution of Commands	<p>If enabled (that is, the “Ask for user credentials when running device configuration operation” check box is checked), users must enter their credentials when they execute a transaction. Provisioning and Audit events display an additional column that lists the username. This setting is disabled by default.</p>

For more information on these global settings, see the [Cisco Prime Network 4.2.2 Administrator Guide](#).

## Steps for Creating and Deploying Transactions

The following table lists the steps you must follow to create and execute a transaction.

	Step Description	See:
<b>Step 1</b>	Check the settings that may affect who can run commands you create.	<a href="#">Setup Tasks for Transaction Manager, page 5-2</a>
<b>Step 2</b>	Create the transaction using the Prime Network XDE Eclipse SDK.	<a href="#">Creating Transactions Using the Prime Network XDE SDK, page 5-4</a>
<b>Step 3</b>	Import the transactions into Transaction Manager.	<a href="#">Importing Transactions Into Prime Network, page 5-4</a>
<b>Step 4</b>	Preview the transaction script execution, and execute the transaction.	<a href="#">Previewing and Executing Transactions, page 5-4</a>
<b>Step 5</b>	Check the transaction job status.	<a href="#">Finding and Controlling Transaction Jobs, page 5-8</a>

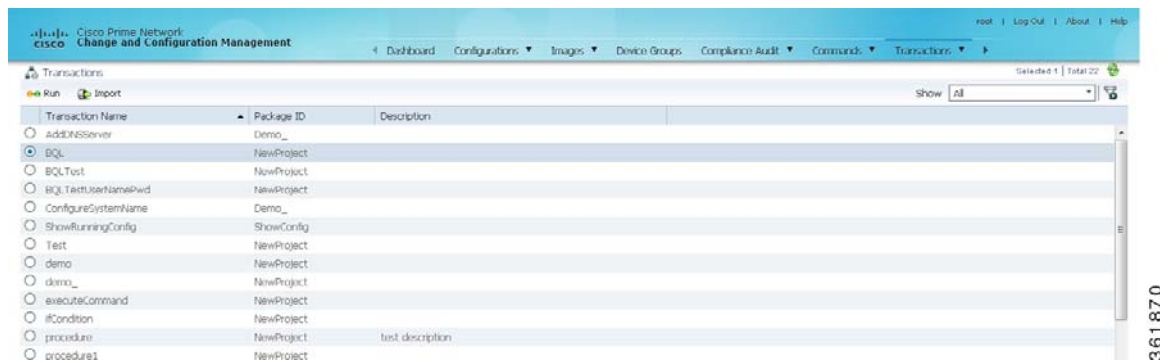
# Transaction Manager Window and Repository

You can launch Transaction Manager from Change and Configuration Management, as shown in the following figure. (You may have to expand the title bar by clicking the arrow at the top left.)



When you select **Transactions > Transactions**, Prime Network displays all of the transactions on the Prime Network gateway. After you create transactions, you can import them into Transaction Manager and they will be listed in the transaction repository.

**Figure 5-1** Transaction Manager Repository



For information on the user roles required to run transactions, see [Setup Tasks for Transaction Manager, page 5-2](#).

## Creating Transactions Using the Prime Network XDE SDK

Use the Prime Network XDE SDK to create procedures called *transactions* (activation workflows). The XDE SDK is an Eclipse-based plug-in that provides a complete development environment for creating flowchart and device interaction packages. The XDE SDK includes a graphical flowchart editor for creating procedures, and uses an expression language that is focused on string-based and XML-oriented data processing.

Transactions can include Command Manager commands, Command Builder commands, SNMP commands, and CLI commands—or a combination of the four. However, if you want to use Command Builder commands in a transaction, you must create an XDE Protocol Abstraction Layer (PAL) Action to use in transactions. For installing XDE and creating the necessary PAL action, contact Advanced Services.

## Importing Transactions Into Prime Network

You can import user-created commands and packages, either from the local system or a gateway server. Import operations will query you for the location of the zip file that contains the transactions.

- 
- Step 1** Select **Transaction > Transactions**, and then click the **Import** icon at the top left of the screen.
  - Step 2** Choose either **Local System** or **Gateway Server** to import the file, and then click **Browse**.
  - Step 3** Select the XDE package to be added to transaction repository. Only the files with a .xar extension is accepted.
- 

Preview and execute the transaction as described in [Previewing and Executing Transactions, page 5-4](#).

## Previewing and Executing Transactions

When you preview a transaction, you can see how it will appear to users. Use the preview feature to see the Telnet and SNMP commands called by the transaction. This includes all Telnet and SNMP commands in Command Builder and Command Manager scripts. You can either choose a device or a device group on which you want to run the transaction.

After you execute a transaction with **Create Job**, Prime Network displays the job status page from which you can get job details.

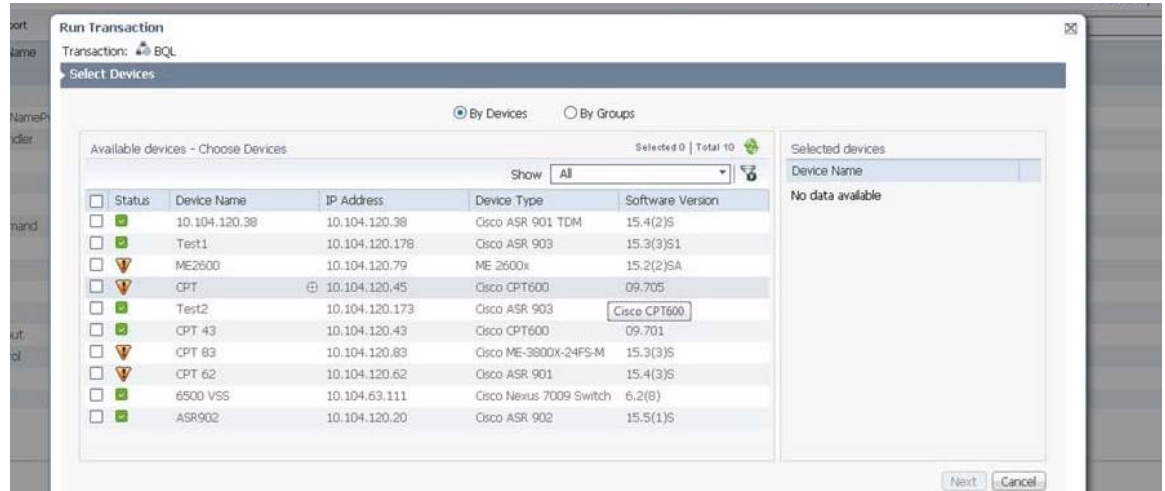
- 
- Step 1** Choose **Transactions > Transactions**, select the transaction from the list, and then click the **Run** icon at the top left of the screen.
  - Step 2** In the Select Device pane, choose one of the following options:
    - By Devices—Choose this option to select the device(s) on which you want to run the transaction.
    - By Groups—Choose this option to select the device group(s) on which you want to run the transaction. There must be at least one device added to a device group for the transaction to run on that group. If a device is added to multiple device groups that are selected, the transaction will run only once on that device. For information on how to set up a device group, see the **Setting up CCM Device Groups** in [Cisco Prime Network 4.2.2 User Guide](#).



**Note** The transaction will run on the devices that are available in the device group at the time of execution.

You can quickly check the device properties by clicking the icon next to the device IP address, as shown in [Figure 5-2](#).

**Figure 5-2** Device Properties in Transactions Manager



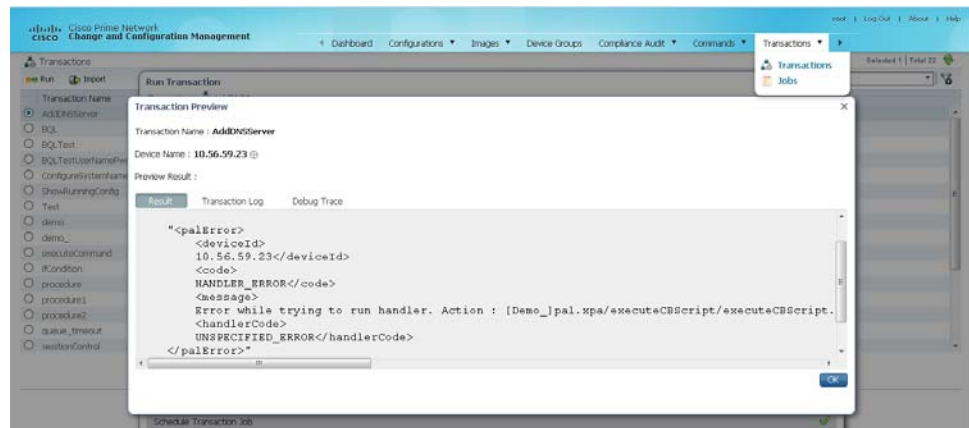
**Step 3** Click **Next**.

**Step 4** In the Transaction Input Parameters pane, enter the input parameters for the transaction, if required. (Not all transactions require input parameters.)

You can import or export input parameters for all or individual devices during transaction execution. For more information see, [Running Transactions Using Input Stored in a File](#), page 5-7.

Click **Preview** to see the CLI commands called by the transaction.

**Figure 5-3** Transaction Preview



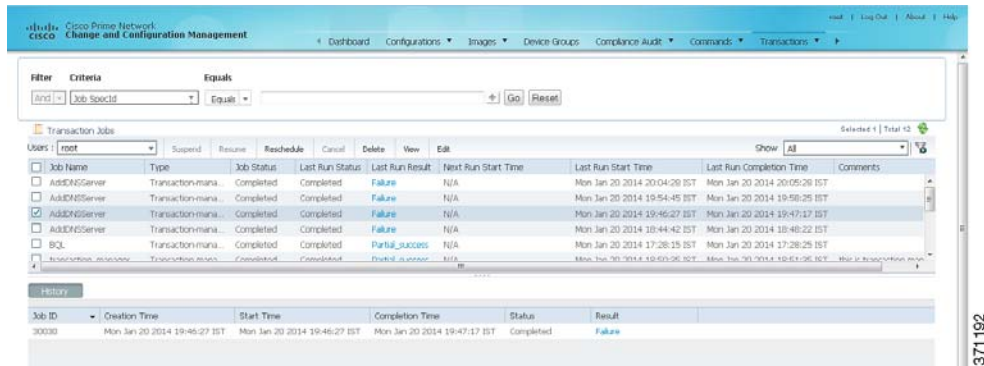
**Step 5** Click **Next**. The Schedule Transaction Job pane is displayed.

- Step 6** In the Job Name field, enter a meaningful name for the transaction job. The default email ID is displayed in the E-Mail ID(s) text area. You can configure the default email ID in the Configuration Management Settings page (**Configurations > Settings**).
- Step 7** Click **Create Job**.
- Step 8** In the job dialog box, click the job hyperlink to view the status in the Transaction Jobs page.



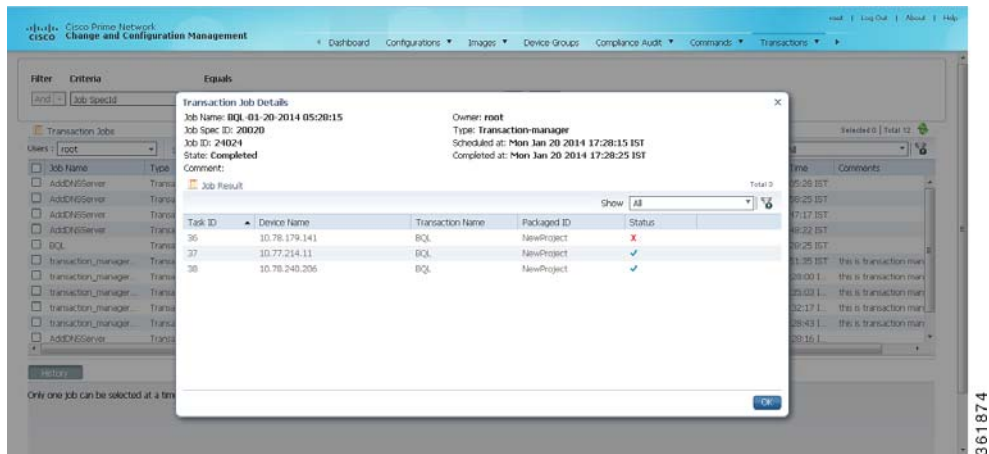
**Note** An email with the job information is sent to the default email ID.

**Figure 5-4 Transaction Jobs**



- Step 9** To view the job details, select the job and click the hyperlink under the Last Run Result column. The Transaction Job Details page is displayed with the job detail for that job instance.

**Figure 5-5 Transaction Job Details**



You can check the results of each step in the transaction by clicking the hyperlink in the Status column.

Job Execution Results Tab	Provides Information About:
Result	The last step result of the transaction (provided by the transaction)

Job Execution Results Tab	Provides Information About:
Transaction Log	Log containing the results of device interaction (for example, the result of a command execution).
Debug Trace	Logging statements from the transaction.

## Running Transactions Using Input Stored in a File

For bulk configurations, you can create an XLS or CSV files with parameter values and import the file into the transaction.

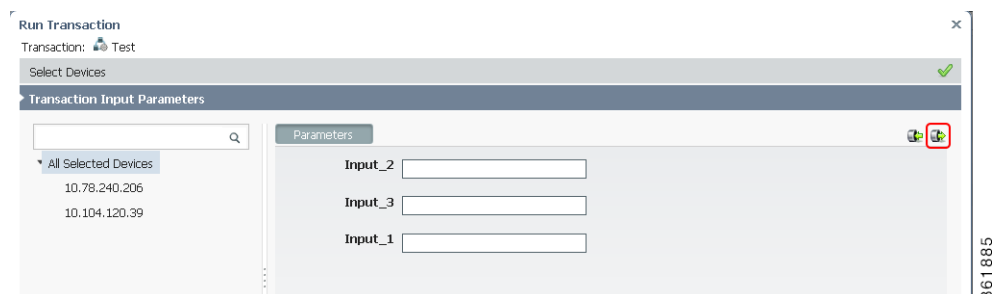
- Step 1** Create a file that contains the parameter values.
- Select the transaction from the repository, and then click **Run**.
  - Select the devices you want to configure, and then click the **Export** icon at the top right of the Transaction Input Parameters pane.
  - In the Export File dialog box, choose either **Export to Local System** or **Export to Gateway Server** to export the file.



**Note** If you choose the **Export to Gateway Server** option, the file name *transaction.csv* is populated in the Gateway Export Filename text box.

- Step 2** Populate the *trnsaction.csv* file with your desired attribute values. One column is dedicated to each attribute.
- Step 3** Run the command using your *trnsaction.csv* file as input.
- Select the command in the repository, and then click **Run**.
  - Select the devices you want to configure. They must match the devices in your spreadsheet.
  - In the Parameters area, click the **Import** icon.

**Figure 5-6** Transaction Input Parameters



- d. Choose **Local System** or **Gateway Server**, as required to navigate to the file that contains your input, and then click **OK**.

**Step 4** Run the transaction.

---

## Finding and Controlling Transaction Jobs

Transaction Manager jobs are automatically deleted according to the Prime Network job purging settings. By default, these jobs are never purged. For information on the user roles required to manage transaction jobs, see [Setup Tasks for Transaction Manager, page 5-2](#).

For an example of how to get details about an executed job, see [Previewing and Executing Transactions, page 5-4](#).

You can use the filter mechanism to locate executed and scheduled jobs using different search criteria, such as username, device name or IP, time stamps, and so forth. To view all of the possible criteria, click the Criteria drop-down list. When you choose a criteria, you then supply a value and click **Go**.

You can also locate transactions using a search based on input parameters. In this case, you supply the search criteria (in addition to the value), as shown in the following procedure.

- 
- Step 1** Choose **Transaction > Jobs**, select the transaction from the list, and click **Next**.
  - Step 2** From the Criteria drop-down list, choose **Input Parameters**. The Criteria field becomes an editable text box.
  - Step 3** In the Criteria text box, overwrite the *Input Parameter* text with any string; for example, **Interface**.
  - Step 4** Select an operator from the drop-down list; for example, **Contains**.
  - Step 5** Enter a value; for example, **gigabit/0/1**.
  - Step 6** Click **Go**.
-