



## Managing Zones

---

The Domain Name System (DNS) is a distributed database for objects in a computer network. By using a nameserver approach, the network consists of a hierarchy of autonomous domains and zones. The namespace is organized as a tree that often resembles the organizations that are responsible for the administration boundaries. For an introduction to the protocol, see [Introduction to the Domain Name System](#).

The basic function of DNS nameservers is to provide data about network objects by answering queries. You can configure the Cisco Prime IP Express DNS server and zones by accepting the system defaults or changing them.

DNS also supports creation of the Internationalized Domain Names (IDN). The full set of Unicode characters are supported to name DNS domains in the WebUI, web-services (REST), and Java SDK with limited sort and search capabilities. For more information, see the *Cisco Prime IP Express 8.3 Release Notes*.



### Note

---

You must set the locale parameters on UNIX to en\_US.UTF-8 when running Java tools that use Java SDK, such as `cnr_rules`. For more information, see "*Running Data Consistency Rules*" section in the *Administration Guide*.

---

This chapter describes the basics of configuring the Cisco Prime IP Express DNS servers, and their primary and secondary zones. [Managing Resource Records](#) describes how to manage DNS resource records (RRs) and hosts, and [Managing Authoritative DNS Server](#) describes how to set some of the more advanced zone and DNS server properties.

Each zone will have an explicit view id that defines its view. The list of views for any given zone distribution will be defined by the list of zones. Synchronizing the zone will always sync the associated views and named ACLs for both primary and secondary zones. [Managing DNS Views](#) describes how to manage DNS views.

- [Managing Primary DNS Servers](#), page 2
- [Creating and Applying Zone Templates](#), page 2
- [Staged and Synchronous Modes](#), page 4
- [Configuring Primary Forward Zones](#), page 5
- [Configuring Primary Reverse Zones](#), page 12
- [Getting Zone Counts on the Server](#), page 14
- [Enabling DNS Updates](#), page 14

- [Managing Secondary Servers, page 15](#)
- [Configuring Subzones, page 17](#)
- [Managing Zone Distributions, page 20](#)
- [Managing DNS ENUM Domain, page 24](#)

## Managing Primary DNS Servers

Adding a zone involves creating a domain name. You can also define an owner and use a zone template. If you do not use a template, you must also define the Start of Authority (SOA) and Name Server (NS) properties for the zone.

You do not need to create a loopback zone for the local host, because Cisco Prime IP Express automatically creates one. A loopback zone is a reverse zone that a host uses to resolve its loopback address, 127.0.0.1, to localhost so that it can direct network traffic to itself. The loopback zone is 127.in-addr.arpa, which appears on the list of reverse zones.

## Related Topics

[Configuring Primary Forward Zones, on page 5](#)

[Configuring Primary Reverse Zones, on page 12](#)

[Getting Zone Counts on the Server, on page 14](#)

## Creating and Applying Zone Templates

A zone template is a convenient way to create a boilerplate for primary zones that share many of the same attributes. You can apply a zone template to any zone, and override the zone attributes with those of the template. You can create zone templates in the local and regional cluster web UIs and in the CLI.



### Caution

Be careful applying a template to an existing zone. The template overwrites all explicitly set attributes for the zone (other than its name), possibly causing severe consequences if the zone is already configured in a network. To make a limited attribute change to multiple zones using a template, be sure to change only that attribute (or attributes), leaving the others unset, before you apply the template to the zones.

## Local Basic or Advanced and Regional Web UI

**Step 1** From the **Design** menu, choose **Zone Templates** under the **Auth DNS** submenu.

**Step 2** You can add a zone template at the local and regional clusters, and you can also pull and push zone templates at the regional cluster in the web UI:

- To add a zone template at the local cluster or explicitly add one at the regional cluster, click the **Add Zone Templates** icon in the Zone Templates pane. This opens the Add Zone Template dialog box, enter the name and click **Add Zone Template**.

To make the zone template meaningful, you would enter the suggested serial number, nameserver, contact e-mail address, and list of nameservers, because they are required for the zone itself. You might also want to specify any zone owners or zone distributions. You do not necessarily need to add these values for the zone template, because you can do so for the zone once it is created from the template. However, the template name and zone default TTL are required. (For a description of the minimally required zone attributes, see [Creating Primary Zones, on page 5](#).)

After you enter these values, click **Save** at the bottom of the page.

- At the regional cluster, to pull a zone template from one or more local clusters, click the **Pull Replica** icon in the Zone Templates pane. This opens the Select Replica Zone Template Data to Pull dialog box which shows a tree view of the regional server replica data for the local clusters' zone templates. The tree has two levels, one for the local clusters and one for the templates in each cluster. You can pull individual templates from the clusters, or you can pull all of their templates:
  - To pull individual zone templates, expand the tree for the cluster, choose a pull criterion next to its name, then click **Pull Zone Template**.
  - To pull all the templates from a cluster, choose a pull criterion, then click **Pull All Zone Templates**.
  - To update all the replica data for a cluster, click the **Pull Replica** icon.

The pull selection criteria are:

- **Ensure**—Pulls each template, except if an existing template by that name already exists at the regional cluster, in which case it does not overwrite the regional cluster data.
  - **Replace**—Pulls each template and overwrites the data for it if it already exists at the regional cluster, without affecting any additional templates at the regional cluster. This is the default and recommended setting.
  - **Exact**—Pulls each template, overwrites the data for it if it already exists at the regional cluster, and removes any additional templates at the regional cluster.
- At the regional cluster, to push a zone template to one or more local clusters:
    - To push all the zone templates on the page List Zone Templates page—Click the **Push All** icon in the Zone Templates pane.
    - To push individual zone templates on the page List Zone Templates page—Click **Push**.

Both of these actions open a version of the Push Zone Template Data to Local Clusters page.

This page provides a choice of the synchronization mode and the destination clusters. Move the desired cluster or clusters from the Available field to the Selected field, then click one of the data synchronization mode radio buttons:

- **Ensure**—Pushes each template, except if an existing template by that name already exists at the local cluster, in which case it does not overwrite the local cluster data. This is the default and recommended setting.
- **Replace**—Pushes each template and overwrites the data for it if it already exists at the local cluster, without affecting any additional templates at the local cluster.
- **Exact**—Available for “push all” operations only, it pushes each template, overwrites the data for it if it already exists at the local cluster, and removes any additional templates at the local cluster.

After making these choices, click **Push Data to Clusters**. This opens the View Push Zone Template Data Report page, where you can view the intended results of the push operation. Click **OK** to implement the push operation.

**Step 3** You can apply the template to a new or existing zone:

- 1 **New zone**—Select the template from the Template drop-down list when you create the zone, as described in [Configuring Primary Forward Zones, on page 5](#).
- 2 **Existing zone**—After you create a zone (see [Configuring Primary Forward Zones, on page 5](#), you can apply the template when you edit the zone on the Edit Zone page. Click the template name in the Template drop-down list, then click **Apply Template**.

## CLI Commands

Use **zone-template name create** to create the zone template. (See [Configuring Primary Forward Zones, on page 5](#) for how to apply the template to a zone.) For example:

```
nrcmd> zone-template zone-template-1 create serial=1
```

To apply a template to a zone, use **zone-template name apply-to zone**. Note that the syntax permits one or more comma-separated zones and also the **all** keyword for all zones. You can also clone a template from an existing template by using **zone-template clone-name create clone=template**, and then make adjustments to the clone. For example:

```
nrcmd> zone-template zone-template-1 apply-to example.com,boston.example.com
```

```
nrcmd> zone-template cloned-template create clone=zone-template-1 owner=owner-1
```

## Staged and Synchronous Modes

You can perform additions or edits to DNS zones, RRs, and hosts in one of two modes in the regional cluster—staged or synchronous:

- **Staged**—Changes to zones, their hosts and RRs are written to the CCM regional database. You must synchronize the zones to propagate pending changes to the local DNS servers. When adding or deleting zones, or when updating zone settings, you must also reload the local DNS servers following synchronization.
- **Synchronous**—After committing changes to the CCM regional database, they are immediately propagated to the local DNS servers. Changes to hosts and RRs will immediately be active, but similar to staged mode, changes to zones may also require a DNS server reload. If propagation cannot occur because the local servers are unreachable, you must manually synchronize the zones to propagate pending changes once the connection is restored.

The zone distribution determines which local DNS servers will publish the zone. Once assigned, synchronization can occur in synchronous edit mode, on a zone basis, or for all zones in the distribution.

Staged edit mode is the default value for regional servers. To choose the mode, select **Session Settings** from the *username* menu in the Web UI. The username drop-down list is available at the top right of the window adjacent to the **Log Out** link.

On local clusters, edits are always performed in synchronous mode. When HA DNS is configured, zone changes are immediately propagated to the HA partner. If propagation cannot occur because the partner

unreachable, host and RR changes will be synchronized automatically once the connection is restored, but you must manually synchronize the zones to propagate pending changes.

## Local Basic or Advanced and Regional Web UI

Staged or synchronous zone modes are preset based on the Session Edit Modes setting in Session Settings on the Web UI main page username menu:

- The regional web UI is preset to **staged**.
- The local web UI is preset to **synchronous**.

## CLI Commands

Set the session `dns-edit-mode` attribute to staged or synchronous. For example:

```
nrcmd> session set dns-edit-mode=sync
```

## Configuring Primary Forward Zones

This section explains how to configure a primary nameserver with a primary forward zone. When you are done with this procedure, follow the procedure in the [Configuring Primary Reverse Zones](#), on page 12 to configure a reverse zone for each network that you use.

**Tip**

For an example of adding a forward zone, see the *"Create the Zone Infrastructure"* section in *Cisco Prime IP Express 8.3 Administrator Guide*.

## Creating Primary Zones

Creating a primary zone requires, at a minimum, adding certain key Start of Authority (SOA) attributes and nameservers for the zone. The advantage of Basic mode in the web UI is that many of these settings are already done for you.

### Local Basic Web UI

- 
- Step 1** From the **Design** menu, choose **Forward Zones** under the **Auth DNS** submenu to open the List/Add Forward Zones page.
  - Step 2** Click the **Add Forward Zone** icon in the Forward Zones pane, enter the zone name (in domain name format).
  - Step 3** Enter the name of the nameserver host, such as **ns1**.
  - Step 4** Enter the contact e-mail name, such as **hostmaster**.
  - Step 5** Click **Add DNS Zone**. Basic mode creates the zone with preset values:

- Zone default TTL—**24h**
- Start of Authority (SOA) serial number—**1**
- SOA secondary refresh time—**3h**
- SOA secondary retry time—**60m**
- SOA secondary expiration time—**1w**
- SOA minimum TTL—**10m**

---

## Local Advanced and Regional Web UI

- Step 1** From the **Design** menu, choose **Forward Zones** under the **Auth DNS** submenu to open the List/Add Forward Zones page.
- Step 2** Click the Add Forward Zone icon in the Forward Zones pane, enter the zone name (in domain name format).
- Step 3** Enter the name of the nameserver host, such as **ns1**.
- Step 4** Enter the contact e-mail name, such as **hostmaster**.
- Step 5** Enter the serial number.
- Step 6** Click **Add Zone**.
- Step 7** Choose an owner or region, if necessary, from the drop-down list.
- Step 8** Apply an existing zone template, if necessary (see [Creating and Applying Zone Templates, on page 2](#)). Click the name of the configured template in the drop-down list.
- Caution** Be careful applying a template to a zone that is already live. Explicitly defined attributes on the template replace the existing ones defined for the zone.
- Step 9** Modify the top attributes, if necessary:
- a) Owner and region
  - b) Preconfigured zone distribution (see [Managing Zone Distributions, on page 20](#))
  - c) Zone default TTL
- Step 10** In the SOA attributes, enter a:
- a) Serial number, such as **1**.  
A primary DNS server uses a serial number to indicate when its database changes and uses any incrementing of this number to trigger a zone transfer to a secondary server. The serial number you can enter here is the suggested one only, and the DNS server does not always accept it. If you edit the serial number to be less than the actual serial number that the server maintains, the server logs a warning message and ignores the suggested serial number. The actual serial number always equals or is higher than the suggested one. You can get the actual serial number by using zone name get serial (if the DNS server is running; if the server is not running, or listing or showing the zone attributes, it always returns the suggested serial number), or by refreshing the DNS Server Value for the zone Serial Number attribute. You must explicitly enter this suggested serial number when creating a zone.
  - b) Nameserver host, such as **ns1**.  
Enter either just the hostname or its fully qualified name (such as **ns1.example.com.**, but you must end it with a trailing dot). Use the fully qualified name if the primary nameserver is in a different zone. The primary DNS server

becomes the ns value in the zone SOA record. You must also specify one or more authoritative nameservers for the zone—these become the Name Server (NS) records for the zone. In the CLI, the primary DNS server automatically becomes the first NS record and also appears as the first entry in the nameservers attribute list.

- c) Contact e-mail name, such as **hostmaster**.

The fully qualified contact e-mail name becomes a slightly altered version of the e-mail address in that dots (.) are substituted for the at symbol (@). If using the fully qualified value, end the address with a trailing dot (for example, enter `hostmaster@example.com` as **hostmaster.example.com.**). Precede any dot before the @ in the original address with a backslash (\) (for example, enter `hostmaster.marketing@example.com` as **hostmaster\marketing.example.com.**).

### Step 11

Enter an authoritative nameserver name under Nameservers further down the page, then click **Add Nameserver**. Authoritative nameservers validate the data in their zones. Both primary and secondary servers can be authoritative. The crucial difference is where they get their zone data. A primary server obtains its data from an administrator, as stored in the server configuration database, and from DNS updates, typically from a DHCP server. A secondary server obtains the zone data from its designated master servers by way of a zone transfer.

You must add at least one nameserver for a zone—Cisco Prime IP Express does not consider the zone data complete unless you do so. The nameservers you list should be those that you want people outside your domain to query when trying to resolve names in your zone. You must add the authoritative nameservers in addition to the primary server for the zone. If the primary DNS server for the zone is in the zone, you must create a host address for it.

For every DNS internal-to-zone nameserver, you must create an Address (A) resource record (RR) to associate the server domain name with an IP address:

- a) Click **Host** to open the List Zones page.
- b) Click the zone name to open the List/Add Hosts for Zone page.
- c) Enter the hostname of the authoritative server.
- d) Enter its IP address.
- e) Click **Add Host**. The server hostname and address appear in the list.
- f) To edit the host, click its name to open the Edit Host page. Click **Modify** to implement the changes.

### Step 12

Configure additional attributes as needed.

### Step 13

Click **Save**.

## CLI Commands

To create a primary zone, use **zone name create primary nameserver contact** . You must specify a primary DNS server; this server becomes the first authoritative DNS nameserver. For example:

```
nrcmd> zone example.com create primary ns1 hostmaster
```

The serial number defaults to 1. You can get the actual serial number by using **zone name get serial** (if the DNS server is running; if the server is not running, or listing or showing the zone attributes, it always returns the suggested serial number).

To add additional authoritative nameservers for the zone, enter a comma-separated list of fully qualified domain names using **zone name set nameservers=list** . Note that only the first server entered is confirmed by the command. Use **zone name show** to show all the server names.

Use **zone name addRR hostname A address** to add the authoritative server hostname and address. To list the host, use **zone name listHosts**. To remove the host, use **zone name removeRR hostname A**.

If you want to apply an existing template while creating a zone, use the *template* attribute. For example:

```
nrcmd> zone example.com create primary ns1 hostmastertemplate=zone-template-1
```

**Note**

In this example, even though you need to specify the nameserver and contact as part of the syntax, the template definition (if any) overwrites them.

To apply a template after creating the zone, use **zone name applyTemplate template** . For example:

```
nrcmd> zone example.com applyTemplate zone-template-1
```

## Editing Primary Zones

You can edit a primary zone to modify its properties, apply a template to it, or use the zone definition to create a template from it.

### Local Advanced and Regional Web UI

- 
- Step 1** From the **Design** menu, choose **Forward Zones** under the **Auth DNS** submenu to open the List/Add Forward Zones page.
  - Step 2** Select the zone in the Forward Zones pane to open the Edit Zone page.
  - Step 3** Make attribute changes as necessary.
  - Step 4** To apply a template to the zone, choose a template name from the drop-down list at the bottom of the page, then click **Apply Template**.
    - Caution** Be careful applying a template to a zone that is already live. Explicitly defined attributes on the template replace the existing ones defined for the zone.
  - Step 5** To use the zone definitions to create a template from them while modifying the zone, click **Modify Zone and Save Template**. On the Save New Zone Template page, give the template a name in the Value field, then click **Save Zone Template**. You return to the List/Add Zones page.
- 

## Confirming Zone Nameserver Configuration

Confirm your zone NS RR configuration by looking at the RRs that you created.

### Local Advanced and Regional Web UI

Select the zone from the Forward Zones pane, and click the **Resource Records** tab. There should be an A record for each nameserver host in the zone. Edit these records or add more on this page.

See [Adding Resource Record to Zone](#).

### CLI Commands

Use **zone name listRR** to check the RRs you added.



## Synchronizing Zones

If a zone needs to be synchronized, in the regional server, click the **Zone Sync** tab for the Primary Forward/Reverse zone. Click the **Sync Zone - Report** button to open a Synchronize Zone page. Expert mode includes an additional **Sync CCM Hosts from RR Data - Report** button.

Manual zone synchronization should only be used when there is an inconsistency between the HA main and HA backup that is not being resolved automatically by the servers.

## Zone Commands

The List/Add Zones (Forward/Reverse) page includes a **Commands** button. When clicked, this opens the Commands dialog box. These commands serve specific purposes:

- **Scavenge zone**—See the *"Scavenging Dynamic Records"* section in *Cisco Prime IP Express 8.3 DHCP User Guide*.
- **Get scavenger start time**—See the *"Scavenging Dynamic Records"* section in *Cisco Prime IP Express 8.3 DHCP User Guide*.
- **Synchronize HA Zone (Forward Zones)**—See [Synchronizing HA DNS Zones](#)




---

**Note** You can see the **Synchronize HA Zone** command only if the server is an HA main server. You cannot see this command if it is an HA backup server.

---

## Importing and Exporting Zone Data

The easiest and quickest way to create a primary zone is to import an existing BIND format zone file, defined in RFC 1035. You can also export these same kinds of files to another server. BIND 4.x.x uses a boot file, called named.boot, to point the server to its database files. You can import your entire BIND 4.x.x configuration using the **import** command in the CLI. BIND 8 and BIND 9 use a configuration file, called named.conf, with a different syntax.

You can import and export zone data only by using the CLI.

When a BIND file contains an \$INCLUDE directive, BIND searches for the include file relative to the directory that the directory directive in the named.boot file specifies. In contrast, the **nrcmd** program searches for the include file relative to the directory containing the zone file being processed.

To avoid this problem, ensure that the BIND configuration uses absolute paths whenever specifying an include file in a zone file. If your zone files contain relative paths when specifying include files, and the directory containing the zone file is not the same as the directory that the directory directive in the named.boot file specifies, your configuration cannot load properly. You need to convert the relative paths in your zone files to absolute paths so that you can import your BIND configuration into Cisco Prime IP Express. Here is an example of a configuration and how to fix paths in directory hierarchy, configuration files, and zone files:

- Directory hierarchy:

```
/etc/named.conf
/etc/named.boot
/usr/local/domain/primary/db.example
```

```
/usr/local/domain/primary/db.include
/usr/local/domain/secondary
```

- Configuration file (/etc/named.conf):

```
#BIND searches for zone files and include files relative to /usr/local/domain
option directory /usr/local/domain
#BIND finds zone file in /usr/local/domain/primary
zone example.com {
    type master ;
    file primary/db.example ;
}
#end of /etc/named.conf
```

- Configuration file (/etc/named.boot):

```
#BIND searches for zone files and include files relative to /usr/local/domain
directory /usr/local/domain
#BIND finds zone file in /usr/local/domain/primary
primary example.com primary/db.example
#end of /etc/named.boot
```

- Incorrect zone file (/usr/local/domain/primary/db.example):

```
#BIND searches for include file relative to /usr/local/domain
$INCLUDE primary/db.include
#end of /usr/local/domain/primary/db.example
```

To make the configuration loadable, change the relative path (\$INCLUDE primary/db.include) in the file db.example to an absolute path (\$INCLUDE /usr/local/domain/primary/db.include).

The following table describes the named.boot and named.conf file directives that BIND 4 and BIND 9 support, and the corresponding Cisco Prime IP Express user interface location or syntax, if any.

**Table 1: BIND-to-CLI Command Mappings**

BIND 4 Command	BIND 9 Command	Mapping to User Interface
—	<code>acl name { addr-match-list };</code>	Web UI: List/Add Access Control Lists page fields (see the "Assigning ACLs on DNS Caching Servers or Zones" section in <i>Cisco Prime IP Express 8.3 DHCP User Guide</i> ). CLI: <b>acl name create value match-list=addr-match-list</b>
—	<code>key id { algorithm string ; secret string ; };</code>	Web UI: List/Add Encryption Keys page fields. CLI: <b>key name create secret algorithm=alg</b>
<b>limit transfers-in num</b>	<code>options { transfers-in num };</code>	Web UI: Edit DNS Server page, set <i>xfer-client-concurrent-limit</i> . CLI: <b>session set visibility=3 dns set xfer-client-concurrent-limit=number</b>
—	<code>options { allow-query addr-match-list };</code>	Web UI: Edit DNS Server page, enable <i>restrict-query-acl</i> . CLI: <b>dns set restrict-query-acl</b>

BIND 4 Command	BIND 9 Command	Mapping to User Interface
<b>options listen-on</b> <i>port</i>	options { listen-on <i>port</i> { <i>addr-match-list</i> } ;};	Web UI: Edit DNS Server page, set <i>Listening port</i> . CLI: <b>dns set local-port-number=port</b>
<b>options max-cache-ttl</b> <i>num</i>	options { max-cache-ttl <i>num</i> ;};	Web UI: Edit DNS Server, set <i>Max. RR caching TTL</i> . CLI: <b>dns set max-cache-ttl=num</b>
<b>options no-fetch-glue</b>	options { fetch-glue no ;};	Web UI: Edit DNS Server page, enable <i>Don't fetch missing glue records</i> . CLI: <b>dns enable no-fetch-glue</b>
<b>options notify yes</b>	options { notify yes ;};	Web UI: Edit DNS Server page, enable <i>Send zone change notification (NOTIFY)</i> . CLI: <b>dns enable notify</b>
<i>options rrset-order order order ...</i>	options { rrset-order <i>order</i> ; <i>order</i> ; ... ;};	Web UI: Edit DNS Server page, enable <i>Enable round-robin</i> . CLI: <b>dns enable round-robin</b>
<b>options support-ixfr yes</b>	options { request-ixfr yes ;};	Web UI: Edit DNS Server page, enable <i>Request incremental transfers (IXFR)</i> . CLI: <b>dns enable ixfr-enable</b>
<b>options transfer-format many-answers</b>	options { transfer-format many-answers ;};	Web UI: Edit DNS Server page, enable <i>Use multirec format for zone transfers</i> . CLI: <b>dns enable axfr-multirec-default</b>
<b>primary</b> <i>zonename file</i>	zone " <i>name</i> " { type master; };	Web UI: Add Zone page fields. CLI: <b>zone name create primary file=file</b>
<b>secondary</b> <i>zonename addr list [backupfile]</i>	zone " <i>name</i> " { type slave; };	Web UI: Add Secondary Zone page fields. CLI: <b>zone name create secondary ip-addr [,ip-addr ...]</b>
—	zone " <i>name</i> " { allow-query { <i>addr</i> ; ... } };	Web UI: Edit Zone page, set <i>restrict-query-acl</i> . CLI: <b>zone name set restrict-query-acl=addr [,addr ...]</b>

BIND 4 Command	BIND 9 Command	Mapping to User Interface
<code>tcplist <i>addrlist</i>xfer<i>nets</i> <i>addrlist</i></code>	<code>zone "<i>name</i>" { allow-transfer { <i>addr</i> ; ... } };</code>	Web UI: Edit Zone page, enable <i>restrict-xfer</i> and set <i>restrict-xfer-acl</i> . CLI: <b>zone <i>name</i> enable restrict-xfer zone <i>name</i> set restrict-xfer-acl=<i>addr</i> [,<i>addr</i> ...]</b>

## Configuring Primary Reverse Zones

For a correct DNS configuration, you must create a reverse zone for each network that you use. A reverse zone is a primary zone that DNS clients use to convert IP addresses back to hostnames, and resides in a special in-addr.arpa domain. You can create a reverse zone manually or import it from BIND. You can also create reverse zones from subnets (see [Adding Reverse Zones from Subnets](#), on page 14).

## Related Topics

[Adding Reverse Zones as Zones](#), on page 12

[Adding Reverse Zones from Subnets](#), on page 14

## Adding Reverse Zones as Zones

You can manually add a reverse zone as a zone.

### Local Basic or Advanced and Regional Web UI

From the **Design** menu, choose **Reverse Zones** under the **Auth DNS** submenu to open the List/Add Reverse Zones page. This page is almost identical to the List/Add Forward Zones page. Then, add a reverse zone the same way you would add a forward zone, as described in [Configuring Primary Forward Zones](#), on page 5, except use the reverse of the forward zone network number added to the special in-addr.arpa domain as the zone name. Use the same template or SOA and nameserver values as you used for the related forward zone.

You can enter a DHCPv4 subnet or DHCPv6 prefix value in the Name field, which converts the subnet or prefix into an appropriate reverse zone name.

To create a reverse zone by using an IPv4 subnet or an IPv6 prefix, do the following:

- 
- Step 1** From the **Design** menu, choose **Reverse Zones** under the Auth DNS submenu.
- Step 2** In the List/Add Reverse Zones page, click the **Add Reverse Zone** icon in the Reverse Zones pane, enter values in the Name field, for example:
- **209.165.201.1/24**—Creates a reverse zone by using an IPv4 subnet.
  - **2001:db8:ff80:ff80::/64**—Creates a reverse zone by using an IPv6 prefix.

- Step 3** Enter the required fields to create the reverse zone:
- **Nameserver**—Enter `ns1.example.com.` (include the trailing dot).
  - **Contact E-Mail**—Enter `hostmaster.example.com.` (include the trailing dot).
  - **Serial Number** —Enter `1`.
- Step 4** Click **Add Reverse Zone**. The List/Add Reverse Zones page appears.
- 

## Local Basic or Advanced and Regional Web UI

To create a reverse zone by using the name of an IPv6 prefix, do the following:

- 
- Step 1** From the **Design** menu, choose **Prefixes** under the **DHCPv6** submenu.
- Step 2** Click the **Add Prefixes** icon in the **Prefixes** pane to open the Add IPv6 Prefix dialog box.
- Step 3** Enter a prefix name (for example, `prefix-1`) and address (for example, `2001:db8:ff80:ff80::`).
- Step 4** Choose a prefix length from the drop-down list (for example, `64`).
- Step 5** Click **Add IPv6 Prefix**. The prefix is added to the List/Add DHCP v6 Prefixes page. To create a reverse zone from the prefix,
- a) Click the **Reverse Zone** tab.
  - b) Select a zone template
  - c) Click **Report**, and then click **Run**.
- 

## CLI Commands

Use `zone name create primary` and `zone name addRRR PTR` to add the primary reverse zone and pointer records for the server. You can also apply a zone template.

To create a reverse zone by using:

- An IPv4 subnet

For example, you can enter:

```
nrcmd> zone 209.165.201.1/24 create primary ns1.example.com. hostmaster.example.com.
```

- An IPv6 prefix

For example, you can enter:

```
nrcmd> zone 2001:db8::/64 create primary
ns1.example.com. hostmaster.example.com.
```

- The name of an IPv6 prefix

For example, you can enter:

```
nrcmd> prefix prefix-1 create 2001:db8:ff80:ff80::/64
nrcmd> zone prefix-1 create primary ns1.example.com. hostmaster.example.com.
```

## Adding Reverse Zones from Subnets

An alternative to creating reverse zones manually is to create them from existing subnets. You can do this in the web UI only.

### Local Advanced and Regional Web UI

- 
- Step 1** From the **Design** menu, choose **Subnets** under the **DHCPv4** submenu to open the List/Add Subnets page.
  - Step 2** Create a subnet for the reverse zone, or use one of the existing subnets.
  - Step 3** Click the **Reverse Zone** tab, and choose an existing zone template.
  - Step 4** Click **Report** to show the changesets for the creation.
  - Step 5** Click **Revert** to return to the List/Add Subnets page.
  - Step 6** Confirm the creation by clicking **Run**, then **Reverse Zones** to see the newly created zone on the List/Add Reverse Zones page.
- 

## Getting Zone Counts on the Server

You can view the created zones associated with the DNS server, hence obtain a count, in the web UI.

Using the CLI, you can get an exact count of the total zones for the DNS server by using **dns getZoneCount** [**forward** | **reverse** | **primary** | **secondary** | **all**]. With no options specified, the command returns the total number of published zones only.

## Enabling DNS Updates

DNS Update (RFC 2136) integrates DNS and DHCP so that they can work together. DNS update automatically records the association between the hosts and their DHCP-assigned addresses. Using DHCP and DNS update, you can configure a host automatically for network access whenever it attaches to the network. You can locate and access the host using its unique DNS hostname.

DNS update is described more fully in the *"Managing DNS Update" chapter in Cisco Prime IP Express 8.3 DHCP User Guide*. The chapter includes sections on the following:

- **Update policy (the Update Policies tab)**—Determines what kind of RRs you want updated when name-to-address associations change through DHCP. (See the *"Configuring DNS Update Policies" section in Cisco Prime IP Express 8.3 DHCP User Guide*.)

- **Update map (the Update Maps tab)**—Defines an update relationship between a DNS server or HA DNS pair and a DHCP failover pair, DHCP policies, client-class, or access control list. (See the "Creating DNS Update Maps" section in *Cisco Prime IP Express 8.3 DHCP User Guide*.)

## Managing Secondary Servers

When you configure a zone, choose at least one secondary server. If you have only one nameserver and it becomes unavailable, there is nothing that can look up names. A secondary server splits the load with the primary or handles the whole load if the primary is unavailable. When a secondary server starts up, it contacts the primary and pulls the zone data over. This is known as a zone transfer.



### Note

Zone transfer in secure mode supports both HMAC-MD5 based TSIG and GSS-TSIG.

You can configure a secondary DNS server to be responsible for a secondary zone, which makes the server a secondary for that zone. You also need to give the address of the master server from which to perform zone transfers. Cisco Prime IP Express must know about this master server.

## Adding Secondary Forward Zones

You can add a secondary forward zone at the local cluster.

### Local Basic or Advanced Web UI

- 
- Step 1** From **Design** menu, choose **Secondary Zones** under the **Auth DNS** submenu to open the List/Add Secondary Zones page.
- Step 2** Click the **Add Secondary Zone** icon in the Secondary Zones pane to open the Add Secondary Zone dialog box. A secondary zone requires a name and a list of one or more master servers. You can also enable restricting zone transfers to a set of hosts, then enter the access control list (ACL) of the restricted hosts in the restrict-xfer-acl field. Enter other attribute values as necessary.
- Step 3** Click **Add Secondary Zone**.  
Clicking the name of the secondary zone in the Secondary Zones pane opens the Edit Secondary Zone page where you can edit the secondary zone. Click **Save** on this page.
- You can add the secondary reverse zone the same way you do a secondary forward zone, except that the address must be a reverse zone address.
- 

### CLI Commands

To create a secondary zone, use **zone name create secondary address** . You must specify the primary DNS server IP address to perform the zone transfer.

For example:

```
nrcmd> zone shark.zone. create secondary 172.18.123.177
```

If you are using HA DNS server pair, the IP addresses must be provided by separating the addresses with comma. The HA DNS backup server will be used when the primary server is unavailable.

For example:

```
nrcmd> zone shark.zone. create secondary 172.18.123.177,172.18.123.45
```

## Enabling Zone Transfers

A secondary server periodically contacts its master server for changes, called a zone transfer. The interval is defined in the server SOA record as the secondary refresh time. You can restrict zone transfers by setting the *restrict-xfer* attribute to true (the preset value is false) on the master server. You have to set the *restrict-xfer-acl* setting accordingly.



### Note

If you restrict zone transfers, the **nslookup** utility **ls** command may fail because it tries to do a full zone transfer, unless you include the IP address that **ls** runs from in the zone *restrict-xfer-acl* list.

### Before You Begin

Prereq

## Local Advanced and Regional Web UI

- 
- Step 1** In the **Forward Zones** pane, click the name of the primary zone to open the Edit Zone page.
- Step 2** In the zone attributes area, you can set the *restrict-xfer* attribute to false (the preset value). If you set the attribute to *true*, you can also specify a list of servers to which to restrict the zone transfers by using the *restrict-xfer-acl* attribute, separating the IP addresses with commas.  
Secondary zones can also restrict zone transfers from other secondary zones, so that the *restrict-xfer* and *restrict-xfer-acl* attributes are also available for secondary zone configurations.
- Step 3** Click **Save**.
- Step 4** You can force zone transfers for the DNS server in two ways:
- On the Secondary Zones pane, click the **Full Zone Transfer** button.
  - To force all zone transfers from the primary server, on the Manage DNS Authoritative Server page, click the **Commands** button to Force all zone transfers.
- 

## CLI Commands

In the CLI, zone transfers are enabled by default, unless you restrict them using **zone name enable restrict-xfer**. If you want to force a zone transfer, use **zone name forceXfer secondary**.



## Configuring Subzones

As the zone grows, you might want to divide it into smaller pieces called subzones. You can delegate administrative authority for these subzones, and have them managed there or served by separate servers. This partitioning is called subzone delegation. Establish subzone delegation by performing these tasks:

- 1 Choose a subzone name.
- 2 Specify a nameserver name.
- 3 Specify a nameserver address.

## Related Topics

[Choosing Subzone Names and Servers, on page 17](#)

[Creating and Delegating Subzones, on page 18](#)

[Undelegating Subzones, on page 19](#)

[Editing Subzone Delegation, on page 19](#)

## Choosing Subzone Names and Servers

After you decide to divide the zone into subzones, you must create names for them. Involve the people responsible for the subzones in deciding their names, and try to maintain a consistent naming scheme.

These suggestions can help you avoid subzone naming problems:

- Consider not naming a subzone by its organizational name. In a changing business environment, organizations merge and are renamed. Naming a subzone after an organization could result in a name that is no longer meaningful over time.
- Consider not using geographical names that indicate the subzone location. Geographical names are meaningless to people outside your organization.
- Do not use cryptic names; make them obvious.
- Do not use existing or reserved top-level domain names as subzones. Using existing names can result in routing problems.

After you choose a subzone name, specify its nameservers, the ones the parent domain nameservers use when queried about the subzone. To ensure that the subzone is always reachable, you should specify two nameservers. They must be authoritative for this zone as either primary or secondary.

Whenever a subzone nameserver changes its name or address, the subzone administrator must inform its parent zone so that the parent zone administrator can change the subzone nameserver and *glue records*. A glue record is an A record with the address of a subzone authoritative nameserver. If the subzone administrator fails to inform its parent, the glue records are invalid. The common symptom is that a host cannot reach a host in another domain by its name, only by its address.

**Note**

---

Cisco Prime IP Express detects lame delegation by reporting missing subzone NS records in the parent zone, if NS record addresses do not match, and if glue A records are required.

---

## Creating and Delegating Subzones

You delegate a subzone by creating it in the parent zone. There should be one NS record for each nameserver to which the subzone is delegated. Each NS record requires a corresponding A record describing the address of the nameserver, unless the nameserver is outside the parent zone or subzone. This A record is called a *glue* record. Such a zone which creates the NS RRs and corresponding A records (glue records) for point of delegation in the parent zone is called a parented zone. A zone that does not create the NS RRs and corresponding A records (glue records) for point of delegation in the parent zone is called an unparented zone.

Consider a zone *example.com* with a parent zone *.com* and a subzone *subdomain.example.com*. If *example.com* is a parented zone, NS RRs for the *example.com* appears in two places; within the *example.com* and within its parent zone *.com*. Within *example.com* are authoritative records for the nameservers for the zone, at the point of delegation for either a subdomain of the zone or in the parent zone. The parent zone *.com* will contain non-authoritative NS RRs for *example.com* at its point of delegation and *subdomain.example.com* will have non-authoritative NS RRs in *example.com* at its point of delegation.

See [Choosing Subzone Names and Servers](#), on page 17

### Local Basic or Advanced Web UI

- 
- Step 1** Create a zone as a subdomain of the parent domain on the List/Add Forward Zones page:
- If applying a zone template, go to **Step 2**.
  - If not applying a zone template, on the List/Add Forward Zones page, click the **Add Forward Zone** icon and add the SOA records and the nameserver with its address.
- Step 2** If Cisco Prime IP Express detects a parent zone based on the subzone name, the Create Subzone in Parent Zone page appears. Click **Create as Subzone** (or **Create as Unparented Zone** if you do not want it to be a subzone) on this page. Creating as subzone will create the NS RRs and corresponding A records (glue records) for point of delegation in the parent zone.
- Step 3** If you configured a nameserver in the subzone, you need to create a glue Address (A) record for it. In the field provided, enter the IP address of the nameserver, then click **Specify Glue Records**. (If there are multiple subzone nameservers, there are multiple fields for the glue records.)
- Step 4** Click **Report** to show the intended changesets for the added records.
- Step 5** Click **Return** after viewing the actual changesets implemented.
- Step 6** To confirm the added records for the subzone, click the View icon in the RRs column for the subzone. The glue A record or records for the subzone nameserver should appear. Click **Return to Zone List**.
- Step 7** To confirm the added records for the parent zone, click the View icon in the RRs column for the parent zone. The subzone nameserver (NS) record or records plus the glue A record or records for them should appear. Click **Return to Zone List**.
-

## CLI Commands

On the subzone primary nameserver machine, create the subdomain:

```
nrcmd> zone boston.example.com. create primary bostonDNSserv1 hostmaster
```

On the parent zone nameserver machine, add an NS record for the subzone nameserver, then Create a glue A record for the subzone nameserver:

```
nrcmd> zone example.com. addRR boston NS bostonDNSserv1.boston.example.com.
```

```
nrcmd> zone example.com. addRR bostonDNSserv1.boston.example.com. A 192.168.40.1
```

## Editing Subzone Delegation

You can edit the subzone RRs.

### Local Basic or Advanced and Regional Web UI

- 
- Step 1** On the corresponding Edit Zone page, click the **Resource Records** tab, edit the NS RR for the subzone by clicking the **Edit** icon next to the record to open the Edit RR in Zone page.
  - Step 2** Edit the NS record data.
  - Step 3** Click **Modify Resource Record**.
  - Step 4** Edit the glue A RR for the subzone server in the same way as in the previous steps.
- 

## CLI Commands

Use `zone name removeRR` to delete the NS and glue A records, then use `zone name addRR` to replace them.

## Undelegating Subzones

If you undelegate a subzone, you need to remove any associated NS and glue A records from the parent zone.



**Note**

If you delete the subzone, Cisco Prime IP Express cleans up the delegation records automatically.

### Local Basic or Advanced and Regional Web UI

On the corresponding Edit Zone page, click the **Resource Records** tab, delete the NS record for the subzone, then delete the glue A record for the subzone server host.

## CLI Commands

Use `zone name removeRR NS` and `zone name removeRR A` to remove the subzone NS and glue A records.

# Managing Zone Distributions

Creating a zone distribution simplifies creating multiple zones that share the same secondary zone attributes. It simplifies to a great extent the setup and management of multiple clusters sharing zone relationships such as primary to secondary or main to backup in the case of DNS HA.

The zone distribution requires adding one or more predefined secondary servers. Running a zone distribution synchronization adds secondary zones managed by secondary (slave) servers for each primary zone managed by a primary server. You can also use zone distributions to synchronize zone data from the CCM database to the local DNS server and regional and local cluster zone data. Synchronizing the zone data will always sync the associated views and named ACLs for both primary and secondary zones.

The distribution must be in a star topology, that is, one primary server and multiple secondary servers. The authoritative (master) server can only be the local primary server where the zone distribution default is defined. Starting with Cisco Prime IP Express 6.2, you can manage one zone distribution at the local cluster and multiple distributions at the regional clusters.

## Related Topics

[Preparing the Zone Distribution Map](#) , on page 20

[Creating a Zone Distribution](#), on page 22

[Pulling Zone Distributions from Replica Data](#), on page 24

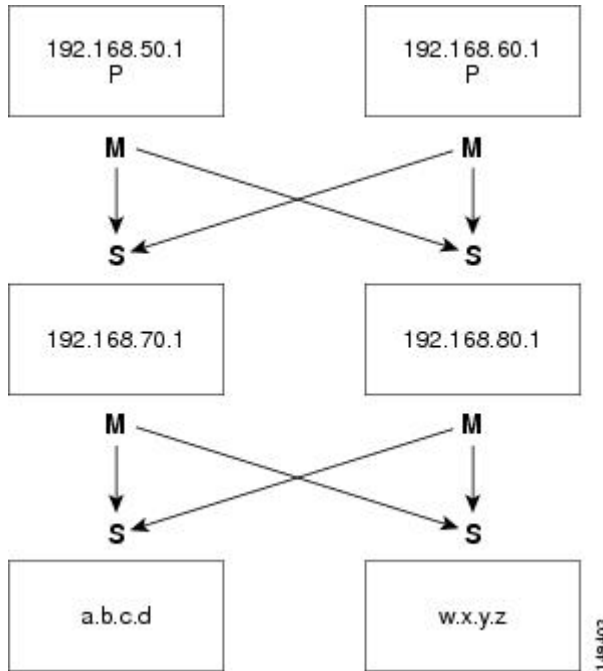
## Preparing the Zone Distribution Map

To prepare for creating a zone distribution, draw a zone distribution map diagram on paper.

- 
- Step 1** Start by identifying the HA DNS pair that is primary (or the primary server if HA is not involved) for all the zones that you include in the map:
- a) Create a box for each server in the HA DNS pair. For example, the server pair for the Chicago-cluster consists of the servers at 192.168.50.1 and 192.168.60.1.
  - b) Write the IP addresses of each server in each box.

c) Write a **P** (for Primary) inside each box (see the image below).

**Figure 1: Diagramming a Zone Distribution Map**



- Step 2** Identify the role as master for each server by writing an **M** below the box. In the example, both primary servers are, by definition, also masters that will send copies of their zones to other servers over zone transfers. Even so, write the **M** below the box to make later steps easier.
- Step 3** Identify all slave servers that will receive zone transfers directly from these masters. Below the master server boxes on the page, add a box for each slave, and write its IP address inside the box. For example, the slave servers at 192.168.70.1 and 192.168.80.1 get zone transfers from the Chicago-cluster masters.
- Step 4** Write an **S** above each slave server box.
- Step 5** Draw arrows from the **M** to each **S** representing the zone transfer flow (see the diagram). In this HA DNS example, the arrows go from each master to both slaves.
- Step 6** As you can see from the diagram, you can extend the boxes further so that the original slaves can become masters to another set of servers (a.b.c.d and w.x.y.z).
- Step 7** Enter the IP address in each box with an **M** below it in the Master Servers list when creating the zone distribution. In the CLI, set the master-servers attribute to the list of IP addresses; for example:

```
nrcmd> zone-dist dist-1 create Chicago-cluster master-servers=192.168.50.1,192.168.60.1
```

- Step 8** From the Secondary Servers drop-down list on the Add or Edit Zone Distribution Secondary Server page, choose the cluster associated with the slave server IP addresses in the boxes that have an **S** above them. In the CLI, use `zone-dist name addSecondary cluster`; for example:

```
nrcmd> zone-dist dist-1 addSecondary Boston-cluster
```

## Creating a Zone Distribution




---

**Note** If you move a zone from one zone distribution to another, synchronize the first zone distribution, move the zone, then synchronize the second zone distribution.

---

### Local Basic or Advanced and Regional Web UI

- 
- Step 1** From **Deploy** menu, choose **Zone Distributions** (for the regional cluster) or **Zone Distribution** (for the local cluster). The option is available if the server is configured with authoritative service. This opens the regional List/Add Zone Distributions page or the local View Zone Distribution page. Note that the default zone distribution is predefined at both clusters; however, the default cluster is the only one available at the local cluster.
- Step 2** To add a new zone distribution, click the **Add Zone Distribution** icon to open the Add Zone Distribution dialog box. To edit an existing zone distribution, select its name to open the Edit Zone Distribution page.
- Step 3** In the Primary Server field, enter the cluster (or configured HA DNS pair) that has the primary server. This primary server is authoritative for the zones that you will determine further down the page. This selection is subtractive: the next zone distribution you create will no longer have the cluster that you set here as one of the choices.
- Step 4** In the Master Servers list, add the IP address (and optional key) for each master server. The master server is generally the primary server. However, you might want to set up a hierarchy of primaries and secondaries where you need to define the master servers for each of the secondary relationships. You might also want to determine the HA DNS server pairs from the master server list. You can also add an optional TSIG key or GSS-TSIG keys (see the *"Transaction Security" or "GSS-TSIG" section in the Cisco Prime IP Express 8.3 DHCP User Guide*) to the master server address by hyphenating the entry in the format *address-key*. For each entry, click **Add IP Key**.
- Step 5** For a zone distribution, you need to add at least one secondary server. Click **Add Secondary Server** on the Edit Zone Distribution page to open the Add Zone Distribution Secondary Server page. Here, choose the cluster of the secondary server. Optionally, if the master servers are other than the primary servers indicated for the zone distribution, add the master server addresses, separating multiple addresses with commas. After clicking **Add Server** returns you to the Edit page, you can connect to the secondary server cluster, delete it, or edit it to change the master servers. To manage the secondary servers in the zone distribution, click the View icon in the Manage Servers column to open the List Secondary Servers page. You can also edit the secondary server on an Edit Zone Distribution Secondary Server page.
- Step 6** Choose the forward and reverse zones for the zone distribution. The default zone distribution includes all the created forward and reverse zones. For all other created zone distributions, you must move the zone or zones into the Selected column.
- Step 7** Click **Save**.
- Step 8** Synchronize the zone distribution with the local cluster DNS servers. A synchronization:
- Pushes staged zone, RR, or host edits to the primary server cluster or HA DNS pair for the regional cluster in Ensure, Replace, or Exact modes, or from the local cluster in Exact mode.
  - Creates secondary zones for secondary servers, in Exact mode.

- Step 9** Click the **Synchronize Zone Distribution** tab, and choose a synchronization mode:
- **Update**—Adds new zones, RR sets, and hosts; replaces existing hosts if there are conflicts; and creates new secondary zones.
  - **Complete**—Like Ensure mode, except that it always replaces existing RR sets and hosts, and modifies the master server list on existing secondary zones.
  - **Exact**—Like Complete mode, except that it deletes extra zones, RR sets, hosts, and secondary zones no longer on the primary.
- Step 10** Click **Report** in the Synchronize Zone Distribution tab (or the same icon in the Synchronize All Zone Distributions area of the page at the regional cluster). This opens the Sync Zone Distribution page that shows a preview of the data synchronized.
- 

## CLI Commands

To create the zone distribution, use **zone-dist name create primary-cluster**. (The primary cluster can also be the HA DNS pair.) For example:

```
nrcmd> zone-dist dist-2 create Chicago-cluster
```

To set the master server or servers, use **zone-dist name set master-servers=addresses**, separating the addresses with commas. For example:

```
nrcmd> zone-dist zone-dist-2 set master-servers=192.168.50.1,192.168.60.1
```

To add the secondary server, use **zone-dist name addSecondary secondary-cluster**. For example:

```
nrcmd> zone-dist zone-dist-2 AddSecondary Boston-cluster
```

You must associate the zone distribution directly with the zone or zone template. Use **zone name set dist-map=zone-dist-list** or **zone-template name set dist-map=zone-dist-list**, separating the zone distribution entries with commas. For example:

```
nrcmd> zone example.com set dist-map=zone-dist-2
```

```
nrcmd> zone-template zone-template-1 set dist-map=zone-dist-2
```

To synchronize the zone distributions, use **zone-dist name sync**. You can do a synchronization in update, complete, or exact mode, and you can exclude RRs and secondary zones:

- At the local cluster, this synchronizes staged edits to the DNS server and primary zones to secondaries. Regardless of the synchronization mode, this always synchronizes the exact list of authoritative zones.
- At the regional cluster, this synchronizes primary zones with the local clusters, and primaries to secondaries. This replaces primary zones at the local cluster in Update and Complete modes, and deletes extra primary zones at the local cluster in Exact mode.
- For secondary zones, the same synchronization logic occurs at the local and regional clusters. In Update mode, this ensures that corresponding secondary zones exist on the server. In Complete mode, existing zones are updated to use the master server list specified by the zone distribution map. In Exact mode, any zones not matching the distribution map are deleted.

For example:

```
nrcmd> zone-dist zone-dist-1 sync exact no-rrs no-secondaries
```

## Pulling Zone Distributions from Replica Data

You can pull zone distributions from the local replica data instead of explicitly creating them.



**Tip**

For an example of pulling local zone data to create a zone distribution, see the *"Pull Zone Data and Create a Zone Distribution"* section in *Cisco Prime IP Express 8.3 Administrator Guide*.

## Regional Web UI

- 
- Step 1** From **Deploy** menu, choose **Zone Distribution**. This opens the regional List/Add Zone Distribution page.
  - Step 2** On the List/Add Zone Distribution page, click the **Synchronize Zone Distribution** tab in the **Zone Distributions** pane.
  - Step 3** Choose the data synchronization mode (**Update**, **Complete**, or **Exact**). These modes are described in the table on that page.
  - Step 4** Click **Report** at the bottom of the dialog box.
  - Step 5** Click **Run**.
- 

## Managing DNS ENUM Domain

Creating separate ENUM domains simplifies the management of Naming Authority Pointer (NAPTR) Electronic Numbering (ENUM). It simplifies to a great extent the setup and management of E.164 numbers and how available services are connected to the E.164 numbers. When you create an ENUM zone and add the corresponding E.164 numbers, Cisco Prime IP Express automatically creates a forward zone and the respective NAPTR resource records.

## Managing DNS ENUM Defaults

To configure the default ENUM settings, do the following:



## Local Basic or Advanced Web UI

- 
- Step 1** From the **Design** menu, choose **Defaults** under the DNS ENUM submenu to open the Manage DNS ENUM Defaults page.
  - Step 2** Enter the Top-level Domain.
  - Step 3** Enter the Local Prefix such as +46.
  - Step 4** Enter the Default Services values: select a service type, enter a URI, and click Add Service.
  - Step 5** Select a Zone Template.
  - Step 6** Click **Save**.
- 

## CLI Commands

Using the CLI, you can set the default ENUM domain, default top-level domain and local prefix, service, and zone template by using:

```
dns-enum-config set [number-prefix prefix | zone-template name]
```

To add the default service, use:

```
dns-enum-config addService <type> <subtype> <uri> {[<order> [preference]]}
```

To remove the default service user, use:

```
dns-enum-config removeService <type> <subtype> <uri>
```

## Adding DNS ENUM Domains

Adding an ENUM domain involves creating a domain name. You can also define an owner and use a zone template.

When you create an ENUM zone, Cisco Prime IP Express automatically creates a forward zone. For example, if you create an ENUM domain for E.164 number prefix 100 and the default top-level domain is set to e164enum.net., a forward zone 0.0.1.e164enum.net. is automatically created and appears in the list of forward zones.

This section explains how to configure an ENUM domain.

## Local and Regional Web UI

- 
- Step 1** From the Design menu, choose Domains under the DNS ENUM submenu to open the List/Add DNS ENUM Domains page.
- Step 2** Click the Add Domains icon in the Domains pane to open the Add ENUM Domain dialog box.
- Step 3** Enter the E.164 number prefix for the domain, such as 897.
- Step 4** Enter the name of the nameserver host, such as ns1.
- Step 5** Enter the contact e-mail name, such as hostmaster.
- Step 6** Click Add ENUM Domain. The domain will be created with the default local prefix such as +4689. The Basic mode creates the zone with the following preset values:
- Zone default TTL-24h
  - Start of Authority (SOA) serial number-1
  - SOA secondary refresh time-3h
  - SOA secondary retry time-60m
  - SOA secondary expiration time-1w
  - SOA minimum TTL-10m
- 

## CLI Commands

The ENUM domain commands are shown in the table below:

Action	Command
Create	<code>dns-enum-domain prefix create [zone-template=name] [nameservers [person]]</code>
Delete	<code>dns-enum-domain prefix delete</code>

## Adding DNS ENUM Numbers

Cisco Prime IP Express supports NAPTR RRs. These records help with name resolution in a particular namespace and are processed to get to a resolution service.

In addition to the option of adding NAPTR resource records, you can now directly add the E.164 numbers and associate the corresponding services with the numbers. When you add a DNS ENUM number, you need to specify either the E.164 number prefix of the parent domain or the Zone templates, and a NAPTR resource record is created for the E.164 number. This approach uses a reversed E.164 number and treats every digit as a node on the DNS name hierarchy. For example, the E.164 address +4689761234 creates a NAPTR RR 4.3.2.1.6.7.9.8 for the +46 E.164 prefix domain.

For more information on NAPTR resource records, see the [Name Resolution in a Namespace Using NAPTR Resource Records](#).

### Local and Regional Web UI

- 
- Step 1** From the **Design** menu, choose **Numbers** under the DNS ENUM submenu to open the List/Add DNS ENUM Numbers page.
- Step 2** Click the Add Numbers icon in the Numbers pane to open the Add ENUM Number dialog box.
- Step 3** Enter the E.164 number along with the E.164 number prefix, such as 1234.
- Step 4** Select a service type, enter a URI, and click Add Service.
- Step 5** Enter the E.164 number prefix for the parent domain.
- Step 6** Select the Zone Template if you have not specified the E.164 prefix.
- Step 7** Select a Ported option and enter the Ported Nameserver FQDN.
- Step 8** Click **Add ENUM** Number. The number will be created and added under the domain +4689.
- 

## CLI Commands

Using the CLI, you can add ENUM number by using:

```
dns-enum-number <number> create <type> <subtype> <uri> [zone-template=name] [domain-prefix]
```

## Pulling and Pushing ENUM Domains

You can push ENUM Domains to and pull ENUM Domains from local clusters on the List/Add DNS ENUM Domains page in the regional cluster web UI.

### Pushing ENUM Domains to Local Clusters

To push ENUM domains to the local cluster, do the following:

#### Regional Basic and Advanced Web UI

- 
- Step 1** From the Design menu, choose Domains under the DNS ENUM submenu to view the List/Add DNS ENUM Domains page in the regional web UI.
- Step 2** Click the Push All icon in the Domains pane to push all the ENUM domains listed on the page, or select the ENUM domain on the Domains pane and click the Push icon.
- Step 3** Choose a push mode using one of the Data Synchronization Mode radio buttons.
- If you are pushing all the ENUM Domains, you can choose Ensure, Replace, or Exact.
  - If you are pushing an ENUM Domain, you can choose Ensure or Replace.

In both cases, Ensure is the default mode.

Choose Replace only if you want to replace the ENUM domain data at the local cluster. Choose Exact only if you want to create an exact copy of the ENUM domain data at the local cluster, thereby deleting all ENUM domain data that is not defined at the regional cluster.

**Step 4** Click Push Data to Clusters.

---

## Pulling ENUM Domains from the Replica Database

To pull ENUM domains from the replica database, do the following:

### Regional Basic and Advanced Web UI

---

- Step 1** From the Design menu, choose Domains under the DNS ENUM submenu to view the List/Add DNS ENUM Domains page in the regional web UI.
- Step 2** Click the Pull Replica icon in the Domains pane.
- Step 3** Click the Replica icon in the Update Replica Data column for the cluster. (For the automatic replication interval, see the Replicating Local Cluster Data section in *Cisco Prime IP Express 8.3 Administrator Guide*.)
- Step 4** Choose a replication mode using one of the Mode radio buttons.
- Step 5** Leave the default Replace mode enabled, unless you want to preserve any existing ENUM domains data at the local cluster by choosing Ensure.
- Step 6** Click the Pull all ENUM Domains button to view the pull details, and then click Run.
- 

## Pulling and Pushing ENUM Numbers

You can push ENUM numbers to and pull ENUM numbers from local clusters on the List/Add DNS ENUM Numbers page in the regional cluster web UI.

### Pushing ENUM Numbers to Local Clusters

To push ENUM numbers to the local cluster, do the following:

#### Regional Basic and Advanced Web UI

---

- Step 1** From the Design menu, choose Numbers under the DNS ENUM submenu to view the List/Add DNS ENUM Numbers page in the regional web UI.
- Step 2** Click the Push All icon in the Numbers pane to push all the ENUM numbers listed on the page, or select the ENUM number on the Numbers pane and click the Push icon.
- Step 3** Choose a push mode using one of the Data Synchronization Mode radio buttons.
- If you are pushing all the ENUM numbers, you can choose Ensure, Replace, or Exact.
  - If you are pushing an ENUM number, you can choose Ensure or Replace.

In both cases, Ensure is the default mode.

Choose Replace only if you want to replace the ENUM number data at the local cluster. Choose Exact only if you want to create an exact copy of the ENUM number data at the local cluster, thereby deleting all ENUM number data that is not defined at the regional cluster.

**Step 4** Click Push Data to Clusters.

---

## Pulling ENUM Numbers from the Replica Database

To pull ENUM numbers from the replica database, do the following:

### Regional Basic and Advanced Web UI

---

- Step 1** From the Design menu, choose Numbers under the DNS ENUM submenu to view the List/Add DNS ENUM Number page in the regional web UI.
  - Step 2** Click the Pull Replica icon in the Numbers pane.
  - Step 3** Click the Replica icon in the Update Replica Data column for the cluster. (For the automatic replication interval, see the Replicating Local Cluster Data section in *Cisco Prime IP Express 8.3 Administrator Guide*.)
  - Step 4** Choose a replication mode using one of the Mode radio buttons.
  - Step 5** Leave the default Replace mode enabled, unless you want to preserve any existing ENUM number data at the local cluster by choosing Ensure.
  - Step 6** Click the Pull all ENUM Numbers button to view the pull details, and then click Run.
-

