



## **Cisco Prime Infrastructure 3.1.5 Installation and Migration Guide for Microsoft Hyper-V**

- 1 Overview, page 3
- 2 About Prime Infrastructure for Microsoft Hyper-V, page 3
- 3 Prerequisites, page 4
- 4 System Configuration, page 4
- 5 Creating Prime Infrastructure Virtual Machines Using Hyper-V Manager, page 5
- 6 Setting Up Prime Infrastructure on a Hyper-V Virtual Machine, page 7
- 7 Installing Cisco Prime Infrastructure Prime Infrastructure 3.1.5 on Cisco Prime Infrastructure 3.1, page 9

Revised: December 8, 2016

**SUPPLEMENTAL LICENSE AGREEMENT FOR CISCO SYSTEMS NETWORK MANAGEMENT SOFTWARE: Cisco Prime Infrastructure**

**IMPORTANT - READ CAREFULLY:** This Supplemental License Agreement (“SLA”) contains additional limitations on the license to the Software provided to Customer under the End User License Agreement between Customer and Cisco. Capitalized terms used in this SLA and not otherwise defined herein shall have the meanings assigned to them in the End User License Agreement. To the extent that there is a conflict among any of these terms and conditions applicable to the Software, the terms and conditions in this SLA shall take precedence.

By installing, downloading, accessing or otherwise using the Software, Customer agrees to be bound by the terms of this SLA. If Customer does not agree to the terms of this SLA, Customer may not install, download or otherwise use the Software.

**ADDITIONAL LICENSE RESTRICTIONS:**

- **Installation and Use.** The Software components are provided to Customer solely to install, update, supplement, or replace existing functionality of the applicable Network Management Software product. Customer may install and use the following Software components:

- **Cisco Prime Infrastructure:** May be installed on a server in Customer's network management environment.

For each Software license granted, customers may install and run the Software on a single server to manage the number of network devices and codecs specified in the license file provided with the Software, or as specified in the Software License Claim Certificate. Customers whose requirements exceed the network device and codec limits must purchase upgrade licenses or additional copies of the Software. The network device and codec limits are enforced by license registration.

- **Reproduction and Distribution.** Customers may not reproduce nor distribute the Software.

**DESCRIPTION OF OTHER RIGHTS AND LIMITATIONS.**

Refer to the Cisco Systems, Inc. End User License Agreement.

# 1 Overview

This section provides basic information about the product and this Guide.

Related Topics

- [About This Guide](#)
- [Product Overview](#)
- [About Cisco Prime Infrastructure Licensing](#)

## About This Guide

This guide describes how to install Cisco Prime Infrastructure 3.1.5 for Microsoft Hyper- V.

You must install Cisco Prime Infrastructure 3.1 Device Pack 6 or higher version over 3.1 before installing Cisco Prime Infrastructure 3.1.5. See [Release Notes for Cisco Prime Infrastructure 3.1.5](#) for more information on downloading and installing.

For information about configuring and managing this product, see the [Cisco Prime Infrastructure 3.1 Administrator Guide](#) and the [Cisco Prime Infrastructure 3.1 User Guide](#).

## Product Overview

Prime Infrastructure provides a single integrated solution for comprehensive lifecycle management of the wired or wireless access, campus, and branch networks, and rich visibility into end-user connectivity and application performance assurance issues. Prime Infrastructure accelerates the rollout of new services, secure access and management of mobile devices, making “Bring Your Own Device” (BYOD) a reality for corporate IT. Tightly coupling client awareness with application performance visibility and network control, Prime Infrastructure helps ensure uncompromised end-user quality of experience. Deep integration with the Cisco Identity Services Engine (ISE) further extends this visibility across security and policy-related problems, presenting a complete view of client access issues with a clear path to solving them.

For:

- An overview of Prime Infrastructure features and benefits, see the latest [Cisco Prime Infrastructure Data Sheets](#).
- Information about frequently used Prime Infrastructure features, see the [Cisco Prime Infrastructure 3.1 User Guide](#).
- Information about features intended for administrators, see the [Cisco Prime Infrastructure 3.1 Administrator Guide](#).

## About Cisco Prime Infrastructure Licensing

Prime Infrastructure licenses control the features that you can use and the number of devices you can manage using those features. For more information about:

- Cisco Prime Infrastructure license types and how to order them, see the [Cisco Prime Infrastructure 3.1 Ordering and Licensing Guide](#).
- How to apply purchased licenses, see the [Cisco Prime Infrastructure 3.1 User Guide](#).

# 2 About Prime Infrastructure for Microsoft Hyper-V

Cisco Prime Infrastructure for Microsoft Hyper-V extends Cisco networking benefits to Microsoft Windows Server Hyper-V deployments.

Hyper-V is a hypervisor-based server-virtualization product that improves utilization, consolidates server workloads, and reduces costs. To achieve this, Cisco Prime Infrastructure on Hyper-V uses hardware virtualization to enable multiple operating systems to run on a single host, and allows the operating systems to share the same underlying physical hardware.

You can deploy Cisco Prime Infrastructure on Hyper-V in a standalone role or as an installable product. Prime Infrastructure Operations Center is not supported on Microsoft Hyper-V.

## 3 Prerequisites

You must have the following before you begin the installation:

- Microsoft Hyper-V 2016 requirements
  - Server—Hyper V server 2016
  - Client—Windows 2010 with Hyper V ManagerSee [Remotely manage Hyper-V hosts with Hyper-V Manager](#) for more details.
- Microsoft Windows 2016 Server Edition:
  - Server—Windows 2016 Standard or Datacenter Edition
  - Client—Hyper-V Manager installed in the same Windows 2016 serverSee [Install the Hyper-V role on Windows Server 2016](#) for more details.

## Cisco Prime Infrastructure ISO image

The following Prime Infrastructure ISO images must be available:

- [PI-APL-3.1.0.0.132-1-K9.iso](#)
- Prime Infrastructure 3.1 Device Pack UBF: Download the latest available Prime Infrastructure 3.1 Device Pack UBF from [Home > Products > Cloud and Systems Management > Routing and Switching Management > Network Management Solutions > Prime Infrastructure > Prime Infrastructure 3.1 > Prime Infrastructure Device Packs](#).
- Prime Infrastructure 3.1 Maintenance Release UBF: Download the latest available Prime Infrastructure 3.1 Maintenance Release UBF from [Home > Products > Cloud and Systems Management > Routing and Switching Management > Network Management Solutions > Prime Infrastructure > Prime Infrastructure 3.1 > Prime Infrastructure Patches](#).



---

**Note** Hyper-V support is available from Prime Infrastructure 3.1 + DP6 or latest DP + Prime Infrastructure 3.1.5.

---

You must install Cisco Prime Infrastructure 3.1 Device Pack 6 or higher version over Prime Infrastructure 3.1 before installing Cisco Prime Infrastructure 3.1.5 or higher version of Prime Infrastructure 3.1 Maintenance Release.



---

**Note** Multiple deployments of Prime Infrastructure on the same Hyper-V host in parallel may cause errors, due to non availability of free space when creating VHDs. We recommend that you do not deploy multiple Prime Infrastructure installations on Hyper-V in parallel, unless you have verified that you have enough free disk space required for the respective Cisco Prime Infrastructure models.

---

## 4 System Configuration

The system configuration matrix for the image deployment is:

**Table 1** System Configuration Matrix

Requirement	Express	Express-Plus	Standard	Professional
Windows 2016 server & Hyper-V 2016 server	2016	2016	2016	2016
Virtual CPUs	4	8	16	16
Memory (RAM)	12288 MB	16384 MB	16384 MB	24576 MB

**Table 1 System Configuration Matrix**

Requirement	Express	Express-Plus	Standard	Professional
HDD Size	300 GB	600 GB	900 GB	1.2 TB
Throughput (Disk IOPS)	200 MB/s	200 MB/s	200 MB/s	320 MB/s

For maximum management capacities for each installation option, see [Scaling Prime Infrastructure](#). You must enter the details about the number of Virtual CPUs, Memory (RAM) and HDD manually during system configuration.

## 5 Creating Prime Infrastructure Virtual Machines Using Hyper-V Manager

Hyper-V manager has to be installed Windows 2016 server or Windows 10 client. See [Install the Hyper-V role](#) for more details.



**Note** The Hyper V server must be listed in the Hyper V manager before you proceed with creating a new VM.

To create a VM using the new Virtual Machine Wizard in the Microsoft Hyper-V Manager, follow these steps:



**Note** System administrator privileges for Hyper-V are required.

**Step 1** Login to the Windows 2016 or Windows 10 client and launch Hyper-V manager.

**Step 2** Right click on the server and select **New > virtual Machine**.

The New Virtual Machine Wizard screen opens

**Step 3** Read the **Before You Begin** information and click **Next**.

**Step 4** Enter the VM name and click **Next**.

You can check the **Store the virtual machine in a different location** check box if you want to specify a location other than the default location.

**Step 5** Select **Generation 1** in the Specify Generation screen and click **Next**.



**Note** **Generation 2** is not supported for Prime Infrastructure deployment.

**Step 6** Enter the start up memory value in the **Assign Memory** screen and click **Next**.

Refer to the [System Configuration Matrix](#) for the startup memory values.

**Step 7** Select **Virtual Network Adapter** from the **Connection** drop-down and click **Next**.

See [Create a virtual switch for Hyper-V virtual machines](#) for more information on a virtual switch.

**Step 8** Select **Create a virtual hard disk**, enter the hard disk size in GB and click **Next**.

Refer to the [System Configuration Matrix](#) for the hard disk values.

**Step 9** Select **Install an operating system from a boot CD/DVD-ROM > Image file (.iso)** from the **Installation Options** screen and browse to the location where the PI-APL-3.1.0.0.132-1-K9.iso is saved and click **Next**.

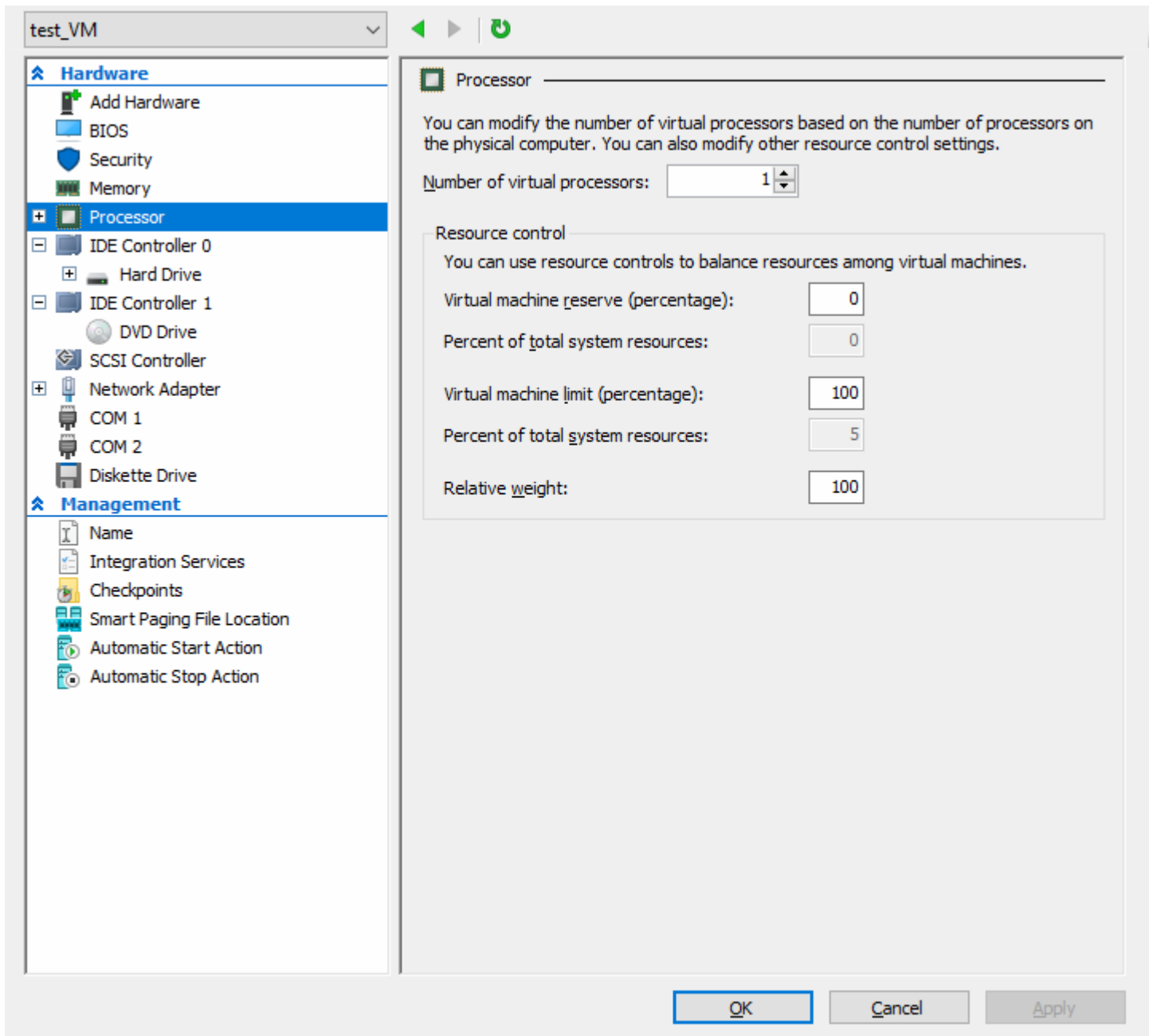


**Note** The ISO image should be available in the Hyper V server if it is a stand alone Hyper V server.

**Step 10** Click **Finish** in the **Completing the New Virtual Machine Wizard** screen after reviewing your settings.

The Virtual Machine is created with the name used in [Step 4](#).

**Step 11** Double click the Virtual Machine and click **Settings**.



**Step 12** Click **Processors** and enter the following:

- Number of virtual processors.
- Virtual Machine Reserve Percentage to 100%

See System Configuration Matrix for more details.

**Step 13** Click **Memory** and enter the following:

- Start Up RAM.
- Set the **Memory Weight** at 50%.



**Note** The memory must be in MB. See System Configuration Matrix for more details.

**Step 14** Click **OK** and **Apply**.

Step 15 Select the virtual machine you created, right click and choose **Connect to open the VM windows..**

Step 16 Select the virtual machine, right click and choose **Start** to boot the virtual machine.

Step 17 Enter **1**—**Prime Infrastructure System Installation (Keyboard/Monitor)** as the boot option.

```
Welcome to Cisco Prime Infrastructure

To boot from hard disk, press <Enter>.

Available boot options:

[1] Prime Infrastructure System Installation (Keyboard/Monitor)
[2] Prime Infrastructure System Installation (Serial Console)
[3] Recover administrator password. (Keyboard/Monitor)
[4] Recover administrator password. (Serial Console)
<Enter> Boot existing OS from Hard Disk.

Enter boot option and press <return>.

boot:
```

The installation process takes about 10 to 15 minutes to complete.

---

## 6 Setting Up Prime Infrastructure on a Hyper-V Virtual Machine

To set up and start Prime Infrastructure on a Hyper-V virtual machine follow these steps:

---

Step 1 Click the **Console** tab.

After the server boots up, the localhost login prompt appears.

Step 2 Enter **setup** at the localhost login prompt.

Step 3 Enter the following parameters:

- **Hostname**—The host name of the virtual appliance.
- **IP Address**—The IP address of the virtual appliance.
- **IP default netmask**—The default subnet mask for the IP address.
- **IP default gateway**—The IP address of the default gateway.
- **Default DNS domain**—The default domain name.
- **Primary nameserver**—The IP address of the primary name server.
- **Secondary name servers**—The IP address if the secondary name server, if available. You can add up to three secondary name servers.
- **Primary NTP server**—The IP address or host name of the primary Network Time Protocol server you want to use. (time.nist.gov is the default).
- **Secondary NTP servers**—The IP addresses or host names of the secondary NTP servers to be used when the primary is not available.

- **System Time Zone**—The time zone code you want to use. See System Timezones in the Cisco Prime Infrastructure 3.1 User Guide.
- **Clock time**—The clock time based on the server’s time zone.
- **Username**—The name of the first administrative user (known as “admin”). This is the administrator account used to log in to the server via the console or SSH. You can accept the default, which is admin.
- **Password**—Enter the admin user password and then confirm it.

The installer application tests the network configuration parameters entered and installs the software if the parameters entered are correct.

**Step 4** Enter the following post-installation parameters:

- **High Availability Role Selection**—
  - Enter **Yes** if the server is the secondary server in a high availability implementation. Enter an authentication key to be used for high availability registration.
  - Enter **No** if the server is the primary server (standalone).
- **Web Interface Root Password**—Enter and confirm the password used for the default root administrator. This is the account used to log in to the Prime Infrastructure web user interface for the first time and set up other user accounts.

**Step 5** Select **Yes** to proceed with the installation, or **No** to re-enter high availability options.

When the installation is complete, the appliance reboots and login prompt appears.

**Step 6** Login to the virtual machine using the admin username and password that you specified in [Step 4](#).

**Step 7** Run `ncs status` to verify the all the processes have restarted.

See [Checking Prime Infrastructure Server Status](#) for more information.

Login and launch the Prime Infrastructure web interface after the installation is complete.

## Modifying VM Resource Allocation Using Hyper-V Manager

Use the following steps to make changes to the virtual appliance RAM, CPU or disk space resource allocations.

Be sure to back up the Prime Infrastructure server before attempting these types of changes. For details, see [Backing Up and Restoring Prime Infrastructure](#).

The Compliance Services will not work if you expand the RAM, CPU or disk space resource allocations after installation.



**Tip**

For better performance: If you are changing RAM and CPU resource allocations for the virtual machine on which you run Prime Infrastructure, and you have more than one virtual machine running on the same hardware, you may also want to change your RAM and CPU resource *reservations* using the Hyper-V Manager.

**Step 1** Login to the Windows 2016 or Windows 10 client and launch Hyper-V Manager.

**Step 2** Right click the virtual appliance, then click **Turn Off**.

**Step 3** Right-click the virtual appliance, then click **Settings**.

**Step 4** To change the RAM allocation, select **Memory** and change the **Memory Size** as needed. Then click **OK**.

**Step 5** To change the CPU allocation, select **Processors** and select the **Number of Virtual Processors**.

**Step 6** To add a new disk, choose **IDE Controller 0**(you cannot expand the space of the existing disk):

- Select **Hard Drive**, and click **Add**.
- Click **New** in the **New Virtual Hard Disk Wizard** screen.
- Click Next on the **Before You Begin** screen.



- d. Choose **Disk Format** > **VHDX**, then click **Next**.
- e. Choose **Disk Type** > **Fixed Size**, then click **Next**.
- f. Enter the **Name** and specify a **Location** of the new virtual disk, then click **Next**.  
The name of the hard disk should not have any spaces.
- g. Choose **Configure Disk** > **Create a new blank virtual hard disk**, and enter the desired disk size.
- h. Choose **Summary**, check the details entered by you, then click **Finish**.

**Step 7** Click **Apply**, then **OK**.

**Step 8** Right click the virtual appliance, then **Start** to restart the appliance.

The server takes approximately 10 to 20 minutes to restart. The HDD will be expanded as per the new configuration on restarting the virtual appliance.

---

## 7 Installing Cisco Prime Infrastructure Prime Infrastructure 3.1.5 on Cisco Prime Infrastructure 3.1

You must install Cisco Prime Infrastructure 3.1 Device Pack 6 or higher version over 3.1 before installing Cisco Prime Infrastructure 3.1.5. See [Release Notes for Cisco Prime Infrastructure 3.1.5](#) for more information on downloading and installing.

## 8 Migrating from Previous Releases of Cisco Prime Infrastructure

You can restore back up only on Prime Infrastructure 3.1 with the Prime Infrastructure 3.1.5 Maintenance Release installed on it from the following versions:

- Cisco Prime Infrastructure 3.0.0.78
- Cisco Prime Infrastructure 3.0.1
- Cisco Prime Infrastructure 3.0.2
- Cisco Prime Infrastructure 3.0.3
- Cisco Prime Infrastructure 3.1.0.0.132
- Cisco Prime Infrastructure 3.1.1
- Cisco Prime Infrastructure 3.1.2
- Cisco Prime Infrastructure 3.1.3
- Cisco Prime Infrastructure 3.1.4

If you are running multiple previous releases of Prime Infrastructure (for example, you are running version 3.0.0.78 and 3.0.1, 3.0.2, 3.0.3, 3.1.0.0.132), you must select one version from which to restore data.

See [Before You Migrate Your Data](#) in the [Cisco Prime Infrastructure 3.1 Quick Start Guide](#) before you restore your data from Prime Infrastructure 3.0.x or 3.1.x to your newly installed Prime Infrastructure 3.1.5 server.

Backup from the Gen 1 physical appliance or virtual appliance can be restored on a Hyper-V virtual machine which has an equal or higher configuration.

---

Cisco and the Cisco Logo are trademarks of Cisco Systems, Inc. and/or its affiliates in the U.S. and other countries. A listing of Cisco's trademarks can be found at [www.cisco.com/go/trademarks](http://www.cisco.com/go/trademarks). Third party trademarks mentioned are the property of their respective owners. The use of the word partner does not imply a partnership relationship between Cisco and any other company. (1110R)

Any Internet Protocol (IP) addresses used in this document are not intended to be actual addresses. Any examples, command display output, and figures included in the document are shown for illustrative purposes only. Any use of actual IP addresses in illustrative content is unintentional and coincidental. © 2012-2016 Cisco Systems, Inc. All rights reserved.

