



## SIGTRAN-M3UA

SIGTRAN, a working group of the Internet Engineering Task Force (IETF), has defined a protocol for the transport of real-time signaling data over IP networks. Cisco Prime Access Registrar (Prime Access Registrar) supports SS7 messaging over IP (SS7oIP) via SIGTRAN-M3UA, a new transport layer which leverages Stream Control Transmission Protocol (SCTP). Prime Access Registrar supports SIGTRAN-M3UA to fetch the authentication vectors from HLR, which is required for EAP-AKA/EAP-SIM authentication.

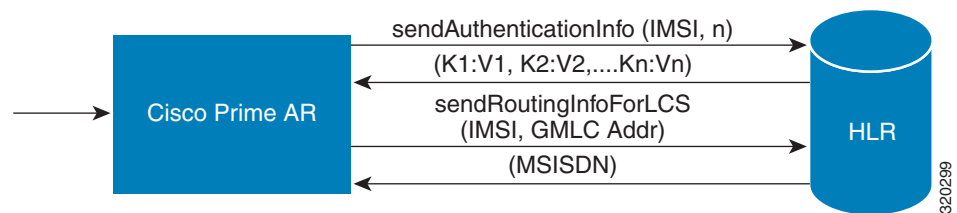


**Note**

You have SIGTRAN-M3UA interface support in addition to the existing SUA interface support.

The EAP-AKA and EAP-SIM authentication service is extended to use M3UA. When using M3UA service for authentication, the subscriber identity (IMSI) is used to send a request to HLR and receives information from HLR containing the authentication information for authenticating an user. The authentication service initiates a request to the SIGTRAN server using IMSI, which retrieves the configured number of authentication vectors from HLR, i.e Triplets or Quintets.

**Figure 14-1**      **MAP Service**



The Prime Access Registrar server initiates the MAP service. After enabling the MAP service, the Prime Access Registrar server sends a `sendAuthenticationInfo` request that contains IMSI and the number of requested authentication vectors to HLR. The HLR sends a response containing the requested vectors information to Prime Access Registrar. Next, the Prime Access Registrar server sends a `sendRoutingInfoForLCS` request that contains IMSI and the GMLC address to HLR. The HLR sends a response containing the MSISDN information for authenticating the mobile subscribers.

Prime Access Registrar provides `map-restore-data` authentication support for `m3ua` services.

Prime Access Registrar supports multiple remote servers with the protocol type, SIGTRAN-M3UA. However, Prime Access Registrar validates and ensures the following when multiple remote servers are available:

- The source port is different for all the remote servers.
- If Origin Point Code (OPC) is different, the routing context is also different for all the remote servers.
- The Destination Point Code (DPC) is different for all the remote servers.
- The NetworkVariant, SubServiceField (SSF), TCAPVariant, NetworkAppearance, and NetworkIndicator values are the same for all the remote servers.

This section describes the following:

- [Prerequisites to SIGTRAN-M3UA](#)
- [Configuring EAP-AKA/EAP-SIM with SIGTRAN-M3UA](#)
- [Configuring M3UA Service](#)
- [Blacklisting Support for SIGTRAN-M3UA Remote Server, page 14-21](#)
- [Support for SCTP Multihoming in SIGTRAN-M3UA, page 14-21](#)
- [Tuning Global SIGTRAN Parameters, page 14-22](#)
- [SIGTRAN-M3UA Logs, page 14-24](#)

## Prerequisites to SIGTRAN-M3UA

Before enabling the SIGTRAN-M3UA remote server, you must do the following:

- ensure that LKSCTP is not available in the Prime Access Registrar server.
- ensure to restart the Prime Access Registrar server whenever you make any configuration changes.
- ensure that you have the 32-bit rpm files for the relevant RHEL OS versions while installing the Cisco Prime Access Registrar. For the list of required rpms for the relevant OS versions, see [Required 32-bit rpms for Relevant RHEL OS Versions](#).




---

**Note** You must install the rpm versions relevant to the RHEL OS versions while installing the Prime Access Registrar.

---

- ensure that the ‘bc’ command (which is an arbitrary precision calculator language) is present while installing Prime Access Registrar in a Linux machine. If the ‘bc’ command is not present, install the relevant rpm such as bc-1.06.95-1.el6.x86\_64 on that machine.
- ensure that you have the following packages while installing the Prime Access Registrar:
  - gcc version-3.4.6
  - gdome-config-0.8.1




---

**Note** You need to build the gdome-config-0.8.1 package to make it available. For more information, see [Building gdome Package, page 14-3](#)

---

- xml2-config-2.6.23

- pkg-config-0.15.0
- glib-2.30
- gtk-2.41
- libxml-2.2.6.20

#### Required 32-bit rpms for Relevant RHEL OS Versions

rpm	RHEL OS Version 6.4	RHEL OS Version 6.6	RHEL OS Version 7.0
glibc	Yes	Yes	Yes
gdome2	Yes	Yes	Yes
glib	Yes	Yes	Yes
glib2	Yes	Yes	Yes
libgcc	Yes	Yes	Yes
libstdc++	Yes	Yes	Yes
libxml2	Yes	Yes	Yes
ncurses	No	No	No
nspr	Yes	Yes	Yes
nss	No	No	No
zlib	Yes	Yes	Yes
nss-softokn-freebl	Yes	Yes	Yes
ncurses-libs	Yes	Yes	Yes
nss-util	Yes	Yes	Yes
gamin	Yes	Yes	Yes
libselinux	Yes	Yes	Yes

#### Building gdome Package

To build gdome-config-0.8.1 package:

**Step 1** Download gdome2-0.8.1.tar.gz package from the location <http://gdome2.cs.unibo.it/#downloads>.

**Step 2** Execute the following command:

```
gunzip gdome2-0.8.1.tar.gz
```

**Step 3** Untar the package using the following command:

```
tar -xvf gdome2-0.8.1.tar
```

**Step 4** Use the `cd` command to move into the package obtained from [Step 3](#).

**Step 5** Execute the following commands:

```
./configure --prefix=<GdomeInstallPath> --with-glib-prefix=<GlibInstalledDirectory>
make
make install
```

Where,

- `GdomeInstallPath` specifies where the Gdome libraries must be placed.
- `GlibInstalledDirectory` specifies which directory the Glib libraries reside in the filesystem.

**Step 6** Now gdome libraries will be available in the location *GdomeInstallPath*.

---

## Configuring EAP-AKA/EAP-SIM with SIGTRAN-M3UA

You can use `aregcmd` to create and configure the service of type `eap-aka` or `eap-sim`, see [EAP-AKA](#) or [EAP-SIM](#) for more information.

To configure EAP-AKA service with SIGTRAN-M3UA remote server:

---

**Step 1** Launch `aregcmd`.

**Step 2** Create an EAP-AKA service.

```
cd /Radius/Services
add eap-aka-service
```

**Step 3** Set type as `eap-aka`.

```
set eap-aka
```

**Step 4** Add `m3ua` remote server in the `remoteServers`

```
cd remoteServers/
Set 1 m3ua
```

---

The following shows an example configuration for EAP-AKA service with SIGTRAN-M3UA remote server support, see [Table 5-1](#) to know more about EAP-AKA service properties.

```
[ //localhost/Radius/Services ]
Entries 1 to 2 from 2 total entries
Current filter: <all>

eap-aka/
  Name = eap-aka
  Description =
  Type = eap-aka
  AlwaysRequestIdentity = False
  EnableIdentityPrivacy = False
  PseudonymSecret = <encrypted>
  PseudonymRenewtime = "24 Hours"
  PseudonymLifetime = Forever
  Generate3GPPCompliantPseudonym = False
  EnableReauthentication = False
  MaximumReauthentications = 16
  ReauthenticationTimeout = 3600
  ReauthenticationRealm =
  AuthenticationTimeout = 120
  QuintetGenerationScript~ =
```

```

UseProtectedResults = False
SendReAuthIDInAccept = False
Subscriber_DBLookup = SIGTRAN-M3UA
FetchAuthorizationInfo = FALSE
MultipleServersPolicy = Failover
IncomingScript~ =
OutgoingScript~ =
OutageScript~ =
RemoteServers/

```

To configure EAP-SIM service with SIGTRAN-M3UA remote server:

- 
- Step 1** Launch **aregcmd**.
- Step 2** Create an EAP-SIM service.
- ```

cd /Radius/Services

add eap-sim-service

```
- Step 3** Set type as eap-sim.
- ```

set eap-sim

```
- Step 4** Add m3ua remote server in the remoteServers
- ```

cd remoteServers

Set 1 m3ua

```
- 

The following shows an example configuration for EAP-SIM service with SIGTRAN-M3UA remote server support. See [Table 5-6](#) to know more about EAP-SIM service properties.

```

eap-sim/
Name = eap-sim
Description =
Type = eap-sim
NumberOfTriplets = 2
UseSimDemoTriplets = False
AlwaysRequestIdentity = False
EnableIdentityPrivacy = False
PseudonymSecret = <encrypted>
PseudonymRenewtime = "24 Hours"
PseudonymLifetime = Forever
Generate3GPPCompliantPseudonym = False
EnableReauthentication = False
MaximumReauthentications = 16
ReauthenticationTimeout = 3600
ReauthenticationRealm =
TripletCacheTimeout = 0
AuthenticationTimeout = 120
UseProtectedResults = False
SendReAuthIDInAccept = False
SubscriberDBLookup = SIGTRAN-M3UA
FetchAuthorizationInfo = FALSE
MultipleServersPolicy = Failover
IncomingScript~ =
OutgoingScript~ =
OutageScript~ =

```

```
RemoteServers/
```

**Note**

After enabling the SIGTRAN-M3UA remote server, you must ensure to restart the Prime Access Registrar server whenever you make any configuration changes.

**Note**

If you set `FetchAuthorizationInfo` as `TRUE` for EAP-AKA or EAP-SIM service for SIGTRAN-M3UA in Prime Access Registrar, it fetches the MSISDN information from HLR in response. The following is an example script for reading the MSISDN information from the response,

```
proc MapMSISDN {request response environ} {
  $environ get AuthorizationInfo
}
```

**Configuring SIGTRAN-M3UA Remote Server**

You can configure the SIGTRAN-M3UA remoteserver under `/Radius/RemoteServers`.

To configure the SIGTRAN-M3UA remote server:

**Step 1** Launch `aregcmd`.

**Step 2** Create `sigtran-m3ua` remote server.

```
cd /r/remoteservers/
add M3UA
cd M3UA
set protocol sigtran-m3ua
```

**Step 3** Set the `Subscriber_DBLookup`.

```
set Subscriber_DBLookup SIGTRAN-M3UA
```

**Step 4** Set the port of the HLR.

```
set DestinationPort 2905
```

**Step 5** Set the port for the source.

```
set SourcePort 2905
```

**Step 6** Set the reactivate timer interval for the remote server.

```
Set the reactivatetimerinterval.
```

**Step 7** Set the subsystem number for the local.

```
set LocalSubSystemNumber 149
```



---

**Note** Prime Access Registrar supports the following local Sub System Numbers (SSNs) by default:  
SGSN (149)  
VLR (7)  
GMLC (145)

---

**Step 8** Set routingindicator.

**Set routingindicator rte\_gt**

**Step 9** Set mlcnumber.

**Set mlcnumber**

**Step 10** Set routingparameters.

**cd routingparameters/**

**set OriginPointCode 2**

**set DestinationPointCode 4**

**set RemoteSubSystemNumber 6**

**set OPCMask 16383**

**set DPCMask 16383**

**set RoutingContext 11**

**Step 11** Set the source and destination gt parameters.

**Step 12** Set the numbering plan, encoding scheme, format, and digits for source.

**Step 13** Set the numbering plan, encoding scheme, format, and digits for destination.

---

## ANSI Support for SIGTRAN

Prime Access Registrar provides ANSI variant support apart from ITU variants in SIGTRAN stack for EAP-SIM and EAP-AKA services to M3UA.

While using this service for authentication, the subscriber identity (IMSI) is obtained from the request. Using this IMSI, the authentication service initiates a request to the SIGTRAN server. This request is to retrieve the configured number of authentication vectors (triplets/quintets) for the IMSI.

The remote SIGTRAN server initiates the IS41 service primitive Authentication Data request with IMSI and number of requested authentication vectors. This will retrieve the authentication vectors from HLR which will be used by the authentication service for authenticating the mobile subscriber.



---

**Note** Prime Access Registrar supports either ITU or ANSI variant in one running instance. Both the variants are not supported simultaneously.

---

The following shows an example configuration of SIGTRAN-M3UA remote server with ITU variant:

```
[ //localhost/Radius/RemoteServers/m3ua ]
  Name = m3ua
  Description =
  Protocol = sigtran-m3ua)
  SourcePort = 2905
  LocalSubSystemNumber = 149
  DestinationPort = 2905
  IMSITranslationScript~ =
  GlobalTitleTranslationScript~ = setGT
  Timeout = 15
  ReactivateTimerInterval = 2000
  LimitOutstandingRequests = FALSE
  MaxOutstandingRequests = 0
  MaxRetries = 3
  MAPVersion = 2
  NetworkVariant = ITU
  SubServiceField = NAT
  TCAPVariant = ITU96
  NetworkAppearance = 1
  NetworkIndicator = NAT
  MLCNumber = 123456789012345
  TrafficMode = LOADSHARE
  LoadShareMode = SLS
  RoutingIndicator = RTE_GT
  RoutingParameters/
    OriginPointCode = 2
    DestinationPointCode = 4
    RemoteSubSystemNumber = 6
    OPCMask = 16383
    DPCMask = 16383
    ServiceIndicatorOctet = 0
    RoutingContext = 11
  SourceGTAddress/
    SourceGTDigits = 919845071842
    SourceGTFormat = GTFRMT_4
    SourceNatureofAddress = INTNUM
    SourceTranslationType = 0
    SourceNumberingPlan = ISDN
    SourceEncodingScheme = BCDEVEN
  DestinationGTAddress/
    DestGTDigits = 919845071842
    DestGTFormat = GTFRMT_4
    DestNatureofAddress = INTNUM
    DestTranslationType = 0
    DestNumberingPlan = ISDN
    DestEncodingScheme = BCDEVEN
```

Table 14-1 describes SIGTRAN-M3UA remote server properties.

**Table 14-1** SIGTRAN-M3UA Stack Properties


| Property    | Description                                                                         |
|-------------|-------------------------------------------------------------------------------------|
| Name        | Required; inherited from the upper directory.                                       |
| Description | An optional description of the service.                                             |
| Protocol    | Represents the type of remote server. The value should be SIG-TRAN-M3UA.            |
| SourcePort  | The port number in which Prime Access Registrar is installed for M3UA transactions. |



**Table 14-1** *SIGTRAN-M3UA Stack Properties (continued)*

| Property                     | Description                                                                                                                                                                                                                                                                                                                                                                                                                                                                                                                                  |
|------------------------------|----------------------------------------------------------------------------------------------------------------------------------------------------------------------------------------------------------------------------------------------------------------------------------------------------------------------------------------------------------------------------------------------------------------------------------------------------------------------------------------------------------------------------------------------|
| LocalSubSystemNumber         | The local sub system number is set as 149 by default.                                                                                                                                                                                                                                                                                                                                                                                                                                                                                        |
| DestinationPort              | The destination port number to which Prime Access Registrar connects.                                                                                                                                                                                                                                                                                                                                                                                                                                                                        |
| IMSITranslationScript        | The scripting point is used to modify the IMSI based on the requirement before sending the request to STP/HLR.                                                                                                                                                                                                                                                                                                                                                                                                                               |
| GlobalTitleTranslationScript | This is used to specify the name of the script which is responsible for translating IMSI to Global Title Address (GTA).<br><br>You can choose to configure blacklisting as part of the global title translation script for SIGTRAN-M3UA remote server. For more information about blacklisting, see .                                                                                                                                                                                                                                        |
| Timeout                      | Specifies the time (in seconds) to wait before an authentication request times out; defaults to 15.                                                                                                                                                                                                                                                                                                                                                                                                                                          |
| MaxTimeOuts                  | Maximum number of timeouts allowed for the remote server.                                                                                                                                                                                                                                                                                                                                                                                                                                                                                    |
| MaxSessionLimit              | Maximum number of sessions allowed for the remote server.                                                                                                                                                                                                                                                                                                                                                                                                                                                                                    |
| ReactivateTimerInterval      | Specifies the time interval (in milliseconds) to activate an inactive server; defaults to 300000 ms (which is 5 minutes).                                                                                                                                                                                                                                                                                                                                                                                                                    |
| LimitOutstandingRequests     | Required; the default is FALSE. Prime Access Registrar uses this property in conjunction with the MaxOutstandingRequests property to tune the RADIUS server's use of the HLR.<br><br>When you set this property to TRUE, the number of outstanding requests for this RemoteServer is limited to the value you specified in MaxOutstandingRequests. When the number of requests exceeds this number, Prime Access Registrar queues the remaining requests, and sends them as soon as the number of outstanding requests drops to this number. |
| MaxOutstandingRequests       | Required when you have set the LimitOutstandingRequests to TRUE. The number you specify, which must be greater than zero, determines the maximum number of outstanding requests allowed for this remote server.                                                                                                                                                                                                                                                                                                                              |
| TrafficMode                  | The mode of the traffic for the HLR. The possible values are LOADSHARE or ACTSTANDBY.                                                                                                                                                                                                                                                                                                                                                                                                                                                        |
| LoadShareMode                | Required. The TrafficMode is set as LOADSHARE, which is a type of load sharing scheme.<br><br>When there is more than one associations with HLR, then the load sharing is set as Signaling Link Selection (SLS). SLS is done based on a simple round-robin basis.                                                                                                                                                                                                                                                                            |
| MAPVersion                   | The version of the MAP. The possible values are 2 or 3. Specify the MAP version that the HLR supports, i.e, 2 or 3 during the configuration.                                                                                                                                                                                                                                                                                                                                                                                                 |
| NetworkVariant               | Required. Choose ITU or ANSI to represent the network variant switch.                                                                                                                                                                                                                                                                                                                                                                                                                                                                        |

**Table 14-1** SIGTRAN-M3UA Stack Properties (continued)

| Property                 | Description                                                                                                                                                                                                                                                                                                                                                                                                                                                      |
|--------------------------|------------------------------------------------------------------------------------------------------------------------------------------------------------------------------------------------------------------------------------------------------------------------------------------------------------------------------------------------------------------------------------------------------------------------------------------------------------------|
| SubServiceField          | Specifies the type of network to which this SAP belongs. The possible options are: <ul style="list-style-type: none"> <li>• INT—represents international network</li> <li>• NAT—represents national network</li> <li>• RESERVE—represents reserved network</li> <li>• SPARE—represents spare network</li> </ul>                                                                                                                                                  |
| SCCPVariant              | The Signaling Connection Control Part (SCCP) variant of the Global Title: <ul style="list-style-type: none"> <li>• Select <b>ITU88</b>, <b>ITU92</b>, or <b>ITU96</b>, if NetworkVariant is set to ITU.</li> <li>• Select <b>ANS88</b>, <b>ANS92</b>, or <b>ANS96</b>, if NetworkVariant is set to ANS.</li> </ul>                                                                                                                                               |
| TCAPVariant              | Required; represents the name of the tcap network variant switch. The possible options are ITU88, ITU92, or ITU96.                                                                                                                                                                                                                                                                                                                                               |
| NetworkAppearance        | Required. A parameter that represents network appearance in the M3UA packet. Value ranges from 0-2147483647 and the default value is 1.<br>This is optional as per the RFC 4666 ( <a href="http://tools.ietf.org/html/rfc4666">http://tools.ietf.org/html/rfc4666</a> .) You can set this value to 0 to remove network appearance from the data packet.                                                                                                          |
| NetworkIndicator         | The network indicator used in SCCP address. The possible options are NAT and INT which represents international network and national network respectively.                                                                                                                                                                                                                                                                                                       |
| MLCNumber                | Required, if you select FetchAuthorizationInfo as True in EAP-AKA or EAP-SIM services. Also, required for M3UA service for fetching the MSISDN from the HLR. This is the map layer network node number by which the HLR identifies the Prime Access Registrar in the network. The MLC number is configured in E.164 format.<br><br> <b>Note</b> MLC is a max-15 digit number. |
| RoutingIndicator         | Required; represents the routing indicator. The possible values are Route on Global Title (RTE_GT) or Route on Sub System Number (RTE_SSN). You can use either RTE_GT or RTE_SSN value to route the packets for HLR.                                                                                                                                                                                                                                             |
| <b>RoutingParameters</b> |                                                                                                                                                                                                                                                                                                                                                                                                                                                                  |
| OriginPointCode          | Required; represents the originating point of a message in a signaling network. The value ranges from 0-16777215.<br><br>This value must be less than OPCMask.                                                                                                                                                                                                                                                                                                   |
| DestinationPointCode     | Required; represents the destination address of a signaling point in a SS7 network.<br><br>This value must be less than DPCMask.                                                                                                                                                                                                                                                                                                                                 |
| RemoteSubSystemNumber    | Required; represents the sub system number of the remote server. The RemoteSubSystemNumber is set as 6 by default.                                                                                                                                                                                                                                                                                                                                               |

**Table 14-1 SIGTRAN-M3UA Stack Properties (continued)**

| Property                                                                         | Description                                                                                                                                                                                                                                                                                      |
|----------------------------------------------------------------------------------|--------------------------------------------------------------------------------------------------------------------------------------------------------------------------------------------------------------------------------------------------------------------------------------------------|
| OPCMask                                                                          | Represents the wild card mask for the origin point code. The value ranges from 0-16777215.<br>Default value is 16383 for ITU and 16777215 for ANSI.                                                                                                                                              |
| DPCMask                                                                          | Represents the wild card mask for the destination point code. The value ranges from 0-16777215.<br>Default value is 16383 for ITU and 16777215 for ANSI.                                                                                                                                         |
| ServiceIndicatorOctet                                                            | Represents the service identifier octet. The value ranges from 0-255.                                                                                                                                                                                                                            |
| RoutingContext                                                                   | Required; represents the routing context which ranges from 0-16777215.                                                                                                                                                                                                                           |
| <b>SourceIPAddresses</b>                                                         |                                                                                                                                                                                                                                                                                                  |
| add 1, add 2,...                                                                 | Represent the multiple source IP addresses configured on the remote server.                                                                                                                                                                                                                      |
| <b>DestinationIPAddresses</b>                                                    |                                                                                                                                                                                                                                                                                                  |
| add 1, add 2,...                                                                 | Represent the multiple destination IP addresses configured on the remote server.                                                                                                                                                                                                                 |
| <b>SourceGTAddress</b>                                                           |                                                                                                                                                                                                                                                                                                  |
| The following fields are displayed only when you set RTE_GT as RoutingIndicator. |                                                                                                                                                                                                                                                                                                  |
| SourceGTDigits                                                                   | Required; an unique number to identify the source.                                                                                                                                                                                                                                               |
| SourceGTFormat                                                                   | Required; represents the format of the global translation (GT) rule. The possible values are GTFRMT_0, GTFRMT_1, GTFRMT_2, GTFRMT_3, GTFRMT_4, or GTFRMT_5.<br>The GT format is GTFRMT_0, GTFRMT_1, or GTFRMT_2 for ANSI variant. GTFRMT_0 is the default format for both ANSI and ITU variants. |
| SourceNatureofAddress                                                            | Required; represents the type of the source address. The possible values are ADDR_NOTPRSNT (Address not present), SUBNUM (Subscriber number), NATSIGNUM (National significant number), or INTNUM (International number.)                                                                         |
| SourceTranslationType                                                            | Required; represents the type of translation. The possible values ranges from 0-255.                                                                                                                                                                                                             |
| SourceNumberingPlan                                                              | Required; represents the numbering plan of the network that the subscriber uses. For example, land mobile numbering plan, ISDN mobile numbering plan, private or network specific numbering plan.                                                                                                |
| SourceEncodingScheme                                                             | Required; represents the BCD encoding scheme. The possible values are UNKN (Unknown), BCDODD (BCD Odd), BCDEVEN (BCD Even), or NWSPEC (National specific). This must be set based on the length of the GT.                                                                                       |
| <b>DestinationGTAddress</b>                                                      |                                                                                                                                                                                                                                                                                                  |
| The following fields are displayed only when you set RTE_GT as RoutingIndicator. |                                                                                                                                                                                                                                                                                                  |
| DestGTDigits                                                                     | Required; an unique number to identify the destination.                                                                                                                                                                                                                                          |

**Table 14-1** SIGTRAN-M3UA Stack Properties (continued)

| Property            | Description                                                                                                                                                                                                                                                                                          |
|---------------------|------------------------------------------------------------------------------------------------------------------------------------------------------------------------------------------------------------------------------------------------------------------------------------------------------|
| DestGTFormat        | Required; represents the format of the global translation (GT) rule. The possible values are GTFRMT_0, GTFRMT_1, GTFRMT_2, GTFRMT_3, GTFRMT_4, or GTFRMT_5.<br><br>The GT format is GTFRMT_0, GTFRMT_1, or GTFRMT_2 for ANSI variant. GTFRMT_0 is the default format for both ANSI and ITU variants. |
| DestNatureofAddress | Required; represents the type of the destination address. The possible values are ADDR_NOTPRSNT (Address not present), SUBNUM (Subscriber number), NATSIGNUM (National significant number), or INTNUM (International number.)                                                                        |
| DestTranslationType | Required; represents the type of translation. The possible values ranges from 0-255.                                                                                                                                                                                                                 |
| DestNumberingPlan   | Required; represents the numbering plan of the network that the subscriber uses. For example, Land mobile numbering plan, ISDN mobile numbering plan, private or network specific numbering plan. Possible values are DATA, GENERIC, ISDN, ISDNMOB, LANMOB, MARMOB, NWSPEC, TEL, TELEX, and UNKN.    |
| DestEncodingScheme  | Required; represents the BCD encoding scheme. The possible values are UNKN (Unknown), BCDODD (BCD Odd), BCDEVEN (BCD Even), or NWSPEC (National specific). This must be set based on the length of the GT.                                                                                           |

The following shows an example configuration of SIGTRAN-M3UA remote server with ANSI variant:

```
[ //localhost/Radius/RemoteServers ]
  Entries 1 to 1 from 1 total entries
  Current filter: <all>

  STP/
    Name =STP
    Description =
    Protocol = Sigtran-m3ua
    SourcePort = 2905
    LocalSubSystemNumber = 149
    DestinationPort = 2905
    IMSITranslationScript~ =
    Timeout = 15
    MaxTimeOuts = 200
    MaxSessionLimit = 0
    ReactivateTimerInterval = 2000
    LimitOutstandingRequests = FALSE
    MaxOutstandingRequests = 0
    MAPVersion = 2
    NetworkVariant = ANS
    SubServiceField = NAT
    SCCPVariant = ANS92
    TCAPVariant = ITU96
    NetworkAppearance = 1
    NetworkIndicator = NAT
    MLCNumber = 123456789012345
    TrafficMode = LOADSHARE
    LoadShareMode = SLS
    RoutingIndicator = RTE_GT
    GlobalTitleTranslationScript~ =
```

```

MaskPointCode = FALSE
RoutingParameters/
  OriginPointCode = 13967019
  DestinationPointCode = 13966849
  RemoteSubSystemNumber = 6
  OPCMask = 16777215
  DPCMask = 16777215
  ServiceIndicatorOctet = 3
  RoutingContext = 11
SourceIPAddresses/
  1. 10.81.78.142
DestinationIPAddresses/
  1. 10.81.78.145
SourceGTAddress/
  SourceGTDigits = 919845071842
  SourceGTFormat = GTFRMT_2
  SourceTranslationType = 10
DestinationGTAddress/
  DestGTDigits = 919845071842
  AdditionalDestGTDigits = 9198,2011
  DestGTFormat = GTFRMT_2
  DestTranslationType = 9

```

## Configuring M3UA Service

Prime Access Registrar supports the M3UA service, which is used to fetch MSISDN from IMSI or vice versa through RADIUS packets.

To configure the M3UA service with SIGTRAN-M3UA remote server:

---

**Step 1** Launch **aregcmd**.

**Step 2** Create an M3UA service.

```

cd /Radius/Services

add FetchAuthInfo

```

**Step 3** Set the type as M3UA.

```

set type M3UA

```

**Step 4** Set **AuthorizationInfoLookUp** to one of the following:

- MSISDN-IMSI—To fetch MSISDN in the request and send IMSI in the response to the HLR.
- IMSI-MSISDN—To fetch IMSI in the request and send MSISDN in the response to the HLR.




---

**Note** See [Example Configuration, page 14-14](#) for a sample configuration with

---

- Map-Restore—To fetch the profile information of a subscriber from the HLR. For more information on configuring the M3UA service with Map Restore Data authorization, see [Configuring M3UA Service with Map Restore Data Authorization, page 14-14](#).

```

set AuthorizationInfoLookUp IMSI-MSISDN

```

**Step 5** Add M3UA remote server in the remoteServers.

```
cd remoteServers
```

```
Set 1 m3ua
```

#### Example Configuration

The following shows an example configuration of the M3UA service:

```
[ //localhost/Radius/Services/test ]
  Name = test
  Description =
  Type = m3ua
  IncomingScript~ =
  OutgoingScript~ =
  OutageScript~ =
  OutagePolicy~ = RejectAll
  AuthorizationInfoLookUp = IMSI-MSISDN
  RemoteServers/
```

## Configuring M3UA Service with Map Restore Data Authorization

Prime Access Registrar provides the Map Restore Data functionality to fetch the profile information of a subscriber from the HLR.

This topic contains the following sections:

- [Map Restore Data Authorization Flow, page 14-14](#)
- [CS Insert Subscriber Data Structure, page 14-15](#)
- [CLI Configuration for Map-Restore-Data, page 14-16](#)

### Map Restore Data Authorization Flow

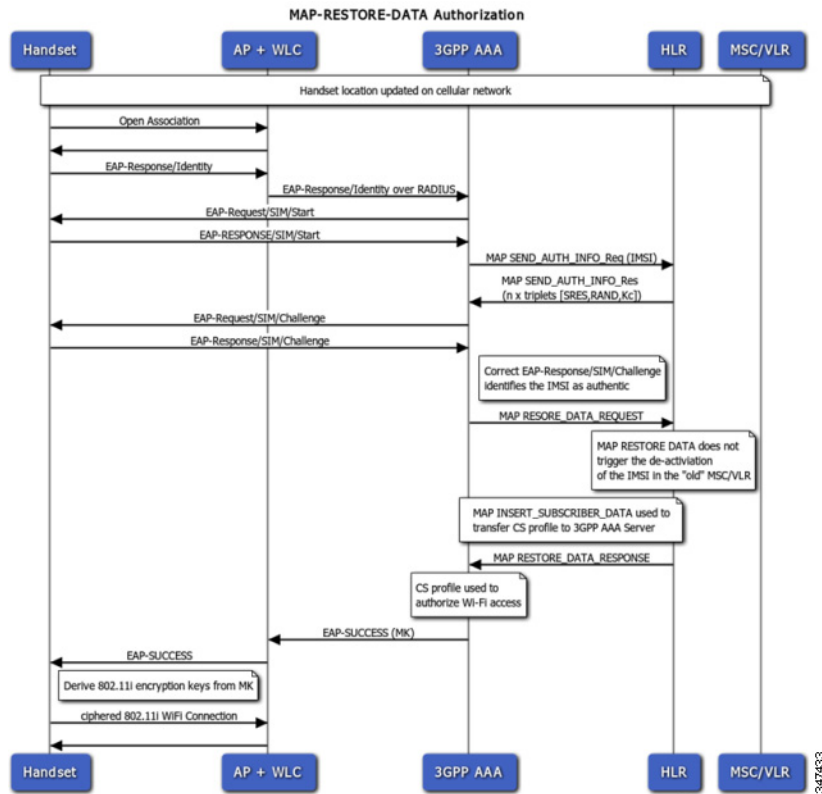
Prime Access Registrar sends a MAP\_SEND\_AUTH\_INFO request to HLR on receiving EAP-SIM / EAP-AKA authentication request and fetches the authentication vectors in MAP\_SEND\_AUTH\_INFO\_RES message. Prime Access Registrar checks the IMSI and if it is authentic, sends a MAP\_RESTORE\_DATA\_REQUEST to fetch the profile information from the HLR. HLR then responds with MAP\_INSERT\_SUBSCRIBER\_DATA request to Prime Access Registrar. The request contains the circuit switched (CS) profile information for a subscriber.

Prime Access Registrar server stores the profile information based on the ProfileInfo configuration and sends a MAP\_INSERT\_SUBSCRIBER\_DATA\_RESPONSE to HLR. HLR responds with MAP\_RESTORE\_DATA\_RESPONSE to Prime Access Registrar. After successful acknowledgment of MAP\_RESTORE\_DATA, Prime Access Registrar server maps the fetched profile through RestoreDataMappings to any of the environment variables configured by the user. The CS profile used to authorize WI-FI access which is fetched from HLR can be transported to access point in any of the radius attribute.

The mapping of the values in the response to a profile is possible based on the configuration in the profilemappings configuration.

[Figure 14-2](#) represents the Map-Restore-Data message flow between Prime Access Registrar and HLR.

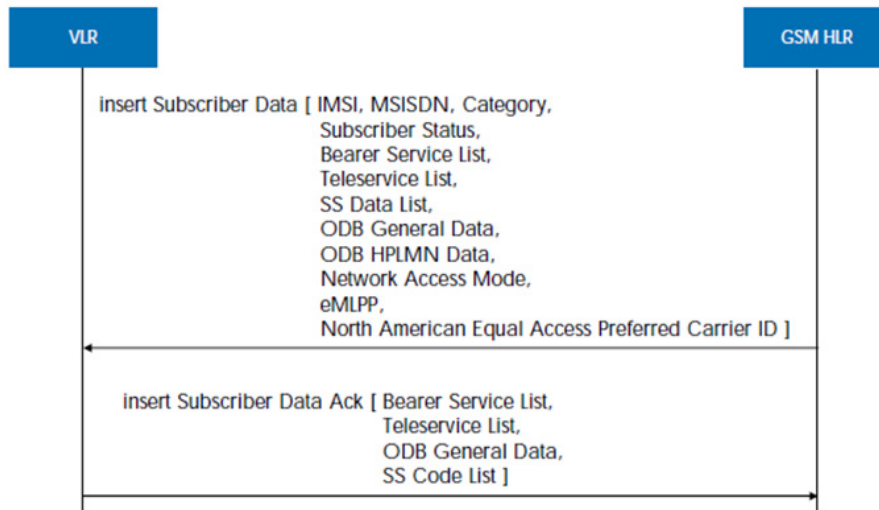
Figure 14-2 Map-Restore-Data Authorization Flow



### CS Insert Subscriber Data Structure

Figure 14-3 shows the parameters fetched by Prime Access Registrar on receipt of the subscriber data request.

Figure 14-3 CS Insert Subscriber Data Structure



## CLI Configuration for Map-Restore-Data

If you set `AuthorizationInfoLookUp` to **Map-Restore**, two additional properties `ProfileMappings` and `RestoreDataMappings` are displayed.

The restore data mapping parameters include LSA information, LCS information, and subscriber data. You can configure an index with a value or a range to fetch one or more properties from the subscriber data.

The following is an example configuration of an M3UA service with Map-Restore-Data authorization:

```
[ //localhost/Radius/Services/serv1 ]
  Name = serv1
  Description =
  Type = m3ua
  IncomingScript~ =
  OutgoingScript~ =
  OutageScript~ =
  OutagePolicy~ = RejectAll
  AuthorizationInfoLookUp = MAP-RESTORE
  RemoteServers/
    1. server1
  RestoreDataMappings/
    IMSI = imsi
    Naea-PreferredCI = naea
    RoamingRestrictedInSgsnDueToUnsupportedFeature =
    NetworkAccessMode =
    LMUIndicator =
    ISTAlertTimer =
    SuperChargerSupportedInHLR =
    CSAllocationRetentionPriority =
    ChargingCharacteristics =
    AccessRestrictionData =
    UE-ReachabilityRequestIndicator =
    Category =
  LSAInformation/
    CompleteDataListIncluded = completedatalist
    LSAOnlyAccessIndicator =
  LSADataList/
    Index = 6
    LSAIdentity = lsaid
    LSAAttributes = lsaattrib
    LSAActiveModeIndicator = activemode
  SubscriberData/
    MSISDN = msisdn
    SubscriberStatus = substatus
    RoamingRestrictionDueToUnsupportedFeature =
  BearerServiceList/
    Index = 6-10
    BearerService = bearsrvc
  TeleServiceList/
    Index =
    TeleService =
  ProvisionedSS/
    Index = 4-6
  ForwardingInfo/
    FI-SS-Code = fsscode
  ForFeatureList/
    Index = 7-10
    FF-SS-Status = ffsstatus
    ForwardedToNumber =
    ForwardedToSubaddress =
    ForwardingOptions =
```



```

        NoReplyConditionTime =
        LongForwardedToNumber =
        BasicService/
            BS-Ext-BearerService = bsextbsservice
            BS-Ext-Teleservice = bsextteleservice
    CallBarringInfo/
        CB-SS-Code =
        CallBarFeatureList/
            Index =
            CB-SS-Status =
            BasicService/
                CB-Ext-BearerService =
                CB-Ext-Teleservice =
        CugInfo/
            CugSubList/
                Index =
                CugSubscription/
                    Cug-Index =
                    cug-Interlock =
                    IntraCUG-Options =
                    BasicServiceGroupList/
                        Index =
                        CUG-Ext-BearerService =
                        CUG-Ext-Teleservice =
        CugInformation/
            Cug-FeatureList/
                Index =
                CUG-Feature/
                    BasicService.Ext-BearerService =
                    PreferentialCUG-Indicator =
                    InterCUG-Restrictions =
    SS-Data/
        SSD-SS-Code =
        SSD-SS-Status =
        SS-SubscriptionOption/
            CliRestrictionOption =
            OverrideCategory =
        BasicServiceGroupList/
            Index =
            BSG-Ext-BearerService =
            BSG-Ext-Teleservice =
    EMLPP-Info/
        MaximumEntitledPriority =
        DefaultPriority =
    ODB-Data/
        ODB-GeneralData =
        ODB-HPLMN-Data =
    RegionalSubscriptionData/
        Index =
        RegionalSubscriptionData =
    VBSSubscriptionData/
        Index =
        VBS-GroupId =
        BroadcastInitEntitlement =
    VGCSSubscriptionData/
        Index =
        VGCS-GroupId =
        AdditionalSubscriptions =
        AdditionalInfo =
        LongGroupId =
    LCSInformation/
        GMLC-List/
            Index =
            GMLC =

```

```

LCS-PrivacyExceptionList/
  Index =
  PE-SS-Code =
  SS-Status =
  LCSNotificationToMSUser =
  ExternalClientList/
    Index =
    ClientIdentity.ExternalAddress =
    ExtCliGMLC-Restriction =
    ExtCliNotificationToMSUser =
  PLMNClientList/
    Index =
    PLMNClient =
  ServiceTypeList/
    Index =
    ServiceTypeIdentity =
    SerTypeGMLC-Restriction =
    SerTypeNotificationToMSUser =
MOLR-List/
  Index =
  MOLR-SS-Code =
  MOLR-SS-Status =
MC-SS-Info/
  MC-SS-Code =
  MC-SS-Status =
  NbrSB =
  NbrUser =
SGSN-CAMEL-SubscriptionInfo/
  GPRS-CSI/
    GPRS-CamelCapabilityHandling =
    GPRS-NotificationToCSE =
    GPRS-CSI-Active =
    GPRS-CamelTDPDataList/
      Index =
      GPRS-TriggerDetectionPoint =
      GPRS-ServiceKey =
      GPRS-GSMSCF-Address =
      DefaultSessionHandling =
  MO-SMS-CSI/
    MOSMS-CamelCapabilityHandling =
    MOSMS-NotificationToCSE =
    MOSMS-CSI-Active =
    SMS-CAMEL-TDP-DataList/
      Index =
      MO-SMS-TriggerDetectionPoint =
      MO-ServiceKey =
      MO-GSMSCF-Address =
      MO-DefaultSMShandling =
  MT-SMS-CSI/
    MTSMS-CamelCapabilityHandling =
    MTSMS-NotificationToCSE =
    MTSMS-CSI-Active =
    SMS-CAMEL-TDP-DataList/
      Index =
      MT-SMS-TriggerDetectionPoint =
      MT-ServiceKey =
      MT-GSMSCF-Address =
      MT-DefaultSMShandling =
  MT-SMSCAMELTDP-CriteriaList/
    Index =
    SMS-TriggerDetectionPoint =
    TPDU-TypeCriterion =
MG-CSI/
  MobilityTriggers =

```

```

MG-ServiceKey =
MG-GSMSCF-Address =
MG-NotificationToCSE =
MG-CSI-Active =
ProfileMappings/
  imsi = 100,Profile1
  naea = 20,Profile2
  naea = 30,Profile3

[ //localhost/Radius/Profiles ]
Entries 1 to 6 from 6 total entries
Current filter: <all>

default-PPP-users/
default-SLIP-users/
default-Telnet-users/
Profile1/
Profile2/
Profile3/

```

Table 14-2 shows the restore data mapping parameters.

**Table 14-2 Restore Data Mappings and Profile Mappings Parameters**

| Parameter                                             | Description                                                                                                                                                                                                                                                                                                                                                                                                |
|-------------------------------------------------------|------------------------------------------------------------------------------------------------------------------------------------------------------------------------------------------------------------------------------------------------------------------------------------------------------------------------------------------------------------------------------------------------------------|
| IMSI                                                  | IMSI received in the response from HLR.                                                                                                                                                                                                                                                                                                                                                                    |
| Naea-Preferred CI                                     | North American Equal Access preferred Carrier ID List. A list of the preferred carrier identity codes that are subscribed to.                                                                                                                                                                                                                                                                              |
| Roaming Restricted In Sgsn Due To Unsupported Feature | Indicates that a subscriber is not allowed to roam in the current Service GPRS Support Node (SGSN) or Cisco Mobility Management Entity (MME) area.                                                                                                                                                                                                                                                         |
| Network Access Mode                                   | The Network Access Mode (NAM) defines if the subscriber is registered to get access to the CS (non-GPRS/EPS network), to the PS (GPRS/EPS) network or to both networks. NAM describes the first level of the subscriber data pseudo-tree below the IMSIroot. It is permanent subscriber data stored in the HSS / HLR and the SGSN with the Gs interface option, and the MME with the SGs interface option. |
| LMU Indicator                                         | Indicates the presence of an LMU.                                                                                                                                                                                                                                                                                                                                                                          |
| IST Alert Timer                                       | Indicates the IST alert timer value that must be used in the Mobile Switching Center (MSC) to inform the HLR about the call activities that the subscriber performs.                                                                                                                                                                                                                                       |
| Super Charger Supported In HLR                        | Indicates whether super charger concept is supported in HLR.                                                                                                                                                                                                                                                                                                                                               |
| CS Allocation Retention Priority                      | Allocation-retention priority for Circuit Switched (CS). This parameter specifies relative importance to compare with other bearers about allocation and retention of bearer.                                                                                                                                                                                                                              |
| ChargingCharacteristics                               | Subscribed charging characteristics.                                                                                                                                                                                                                                                                                                                                                                       |

**Table 14-2 Restore Data Mappings and Profile Mappings Parameters (continued)**

| <b>Parameter</b>                                                        | <b>Description</b>                                                                                                                                                                                                                                                                                                                          |
|-------------------------------------------------------------------------|---------------------------------------------------------------------------------------------------------------------------------------------------------------------------------------------------------------------------------------------------------------------------------------------------------------------------------------------|
| Access Restriction Data                                                 | Allowed Recipient Access Table (RAT) according to subscription data.                                                                                                                                                                                                                                                                        |
| UE Reachability Request Indicator                                       | Indicates that the Home Subscriber Server (HSS) is awaiting a notification of user equipment (UE) reachability.                                                                                                                                                                                                                             |
| Category                                                                | Calling party category                                                                                                                                                                                                                                                                                                                      |
| LSA Information                                                         | These parameters refer to one or more localized service areas (LSAs) a subscriber may be a member of, together with the priority, the preferential access indicator, the active mode support indicator and active mode indication of each localized service area. The access right outside these localized service areas is also indicated. |
| <b>Subscriber Data</b>                                                  |                                                                                                                                                                                                                                                                                                                                             |
| MSISDN                                                                  | MSISDN value in the subscriber data.                                                                                                                                                                                                                                                                                                        |
| Subscriber Status                                                       | Barring status of the subscriber, which could be Service Granted or Operator Determined Barring.                                                                                                                                                                                                                                            |
| Roaming Restriction Due To Unsupported Feature                          | Indicates that the subscriber is not allowed to roam in the current MSC area.                                                                                                                                                                                                                                                               |
| Bearer Service List                                                     | List of extensible bearer services subscribed.<br>Configure the index value to fetch only the required bearer services.                                                                                                                                                                                                                     |
| TeleService List                                                        | List of extensible teleservices subscribed.<br>Configure the index value to fetch only the required teleservices.                                                                                                                                                                                                                           |
| Provisioned SS                                                          | List of supplementary services provisioned.<br>Configure the index value to fetch only the required supplementary services.                                                                                                                                                                                                                 |
| ODB-Data                                                                | Operator Determined Barring (ODB) general data and ODB Home Public Land Mobile Network (HPLMN) specific data.                                                                                                                                                                                                                               |
| Regional Subscription Data                                              | List of regional subscription areas (zones) in which the subscriber is allowed to roam.<br>Configure the index value to fetch only the required zones.                                                                                                                                                                                      |
| VBS Subscription Data                                                   | List of Voice Broadcast Services (VBS) subscribed.<br>Configure the index value to fetch only the required VBS.                                                                                                                                                                                                                             |
| VGCS Subscription Data                                                  | List of Voice Group Call Services (VGCS) subscribed.<br>Configure the index value to fetch only the required VGCS.                                                                                                                                                                                                                          |
| <b>LCS Information</b>                                                  |                                                                                                                                                                                                                                                                                                                                             |
| Live Communication Server (LCS) related information for the subscriber. |                                                                                                                                                                                                                                                                                                                                             |
| GMLC-List                                                               | List of Gateway Mobile Location Centers (GMLCs) that are permitted to issue a call/session unrelated or call/session related MT-LR request.<br>Configure the index value to fetch only the required GMLCs.                                                                                                                                  |
| LCS-Privacy Exception List                                              | Classes of LCS client that are allowed to locate any target Mobile Station (MS).<br>Configure the index value to fetch only the required classes.                                                                                                                                                                                           |

**Table 14-2 Restore Data Mappings and Profile Mappings Parameters (continued)**

| Parameter                        | Description                                                                                                                                      |
|----------------------------------|--------------------------------------------------------------------------------------------------------------------------------------------------|
| MOLR-List                        | Code and status of Mobile Originating Location Request (MO-LR) subscribed.<br>Configure the index value to fetch only the required requests.     |
| MC-SS-Info                       | Parameters identifying Multicall (MC) supplementary services (SS).                                                                               |
| SGSN-CAMEL-Subscri<br>ption Info | Parameters identifying the subscribers as having Customized Application for Mobile Enhanced Logic (CAMEL) services that are invoked in the SGSN. |
| <b>ProfileMappings</b>           |                                                                                                                                                  |
| Attribute                        | The RADIUS attribute to map the fetched profile data.                                                                                            |
| Value:Profile                    | Value of the attribute.                                                                                                                          |

### Configuring Environment Variables to Fetch Subscriber Data Values

You can configure an environment variable to fetch the required values from the subscriber data packets. You can run a script to fetch the environment variable along with the values. See the example below:

```
proc FetchBearerService {request response environ} {
    set bearerService [ $environ get bs-ext ]
    $request trace 2 "BearerService value fetched is " $bearerService
}
```

In the above script `bs-ext` is the environment variable that is configured. If the values fetched from `BearerServiceList` are 17,18,19,20 and 21, the above script returns the value 17:18:19:20:21.

Similarly we can run scripts to retrieve other environment variables as well.

## Blacklisting Support for SIGTRAN-M3UA Remote Server

Prime Access Registrar supports blacklisting of IMSI or IP address values for SIGTRAN-M3UA remote servers.

You can configure a SIGTRAN-M3UA remote server with EAP-SIM or EAP-AKA service, and then choose to configure blacklisting as part of the global title translation script of the remote server. For more information about blacklisting, see the “Using Extension Points” chapter of the [Cisco Prime Access Registrar 9.1 Administrator Guide](#).

## Support for SCTP Multihoming in SIGTRAN-M3UA

Stream Control Transmission Protocol (SCTP) is an IP transport protocol that supports data exchange between exactly two endpoints. Multihoming feature of SCTP provides the ability for a single SCTP endpoint to support multiple IP addresses. With this feature, each of the two endpoints during an SCTP association can specify multiple points of attachment. Each endpoint will be able to receive messages from any of the addresses associated with the other endpoint. With the use of multiple interfaces, data can be sent to alternate addresses when failures occur and thus Prime Access Registrar runs successfully even during network failures.

Prime Access Registrar allows you to configure multiple source and destination addresses on the remote server. The following shows an example configuration of SIGTRAN-M3UA remote server with multiple source and destination addresses:

```
[ /Radius/RemoteServers/m3ua ]
  Name = m3ua
  Description =
  Protocol = sigtran-m3ua
  SourcePort = 2805
  LocalSubSystemNumber = 149
  DestinationPort = 2855
  IMSITranslationScript~ =
  GlobalTitleTranslationScript~ =
  Timeout = 15
  ReactivateTimerInterval = 300000
  LimitOutstandingRequests = FALSE
  MaxOutstandingRequests = 0
  MAPVersion = 3
  NetworkVariant = ITU
  SubServiceField = NAT
  TCAPVariant = ITU96
  NetworkAppearance = 1
  NetworkIndicator = NAT
  MLCNumber = 123456789012345
  TrafficMode = LOADSHARE
  LoadShareMode = SLS
  RoutingIndicator = RTE_SSN
  RoutingParameters/
  OriginPointCode = 2
  DestinationPointCode = 4
  RemoteSubSystemNumber = 6
  OPCMask = 16383
  DPCMask = 16383
  ServiceIndicatorOctet = 0
  RoutingContext = 11
  SourceIPAddresses/
  DestinationIPAddresses/
--> cd SourceIPAddresses
--> add 1 192.168.0.2
--> add 2 192.168.0.3
--> cd ../DestinationIPAddresses
--> add 1 192.168.0.5
--> add 2 192.168.0.6
```

In the above example, the link between IP addresses 192.168.0.2 and 192.168.0.5 acts as the primary link and the link between IP addresses 192.168.0.3 and 192.168.0.6 acts as the secondary link. With the Multihoming feature, if one of the interfaces in the primary link is down, the secondary link carries the active traffic. On restoration of the IP address, the traffic switches back to the primary link.

## Tuning Global SIGTRAN Parameters

Prime Access Registrar provides a CLI tool SigtranXMLEdit that allows you to edit the values of the global SIGTRAN XML parameters. The tool is available under the <installation directory>/bin directory, e.g. /cisco-ar/bin and the parameters are available in the *default.xml* file under the /cisco-ar/m3ua-cfg directory.

[Table 14-3](#) lists the global SIGTRAN parameters that you can edit using the CLI tool.

**Table 14-3 Global SIGTRAN Parameter**

| Parameter      | Description                                        |
|----------------|----------------------------------------------------|
| rtoMin         | Minimum value of retransmission timeout            |
| rtoMax         | Maximum value of retransmission timeout            |
| rtoInitial     | Initial value of retransmission timeout            |
| alpha          | Retransmission timeout alpha value                 |
| beta           | Retransmission timeout beta value                  |
| maxAssocReTx   | Maximum association retransmission                 |
| maxPathReTx    | Maximum path retransmission                        |
| maxInitReTx    | Maximum initial retransmission                     |
| cookieLife     | Cookie life                                        |
| intervalTm     | Heartbeat interval                                 |
| maxAckDelayTm  | SACK period                                        |
| maxNmbInStrms  | Maximum number of inbound streams                  |
| maxNmbOutStrms | Maximum number of outbound streams                 |
| mtuInitial     | Initial value of maximum transmission unit         |
| mtuMinInitial  | Minimum Initial value of maximum transmission unit |
| mtuMaxInitial  | Maximum Initial value of maximum transmission unit |

To edit the SIGTRAN parameters:

**Step 1** Launch the CLI tool **SIGTRANXMLeDit** from the `/cisco-ar/bin` directory.

The tool displays the list of editable parameters available in the `default.xml` file as shown below.

1. RTO min (RTOMI) from the header `_sbSctSapCfg`
2. RTO max (RTOMA) from the header `_sbSctSapCfg`
3. RTO Initial (RTOI) from the header `_sbSctSapCfg`
4. RTO Alpha (RTOA) from the header `_sbGenReCfg`
5. RTO Beta (RTOB) from the header `_sbGenReCfg`
6. Assoc. Max retrans. (AMR) from the header `_sbGenReCfg`
7. Path Max retrans. (PMR) from the header `_sbGenReCfg`
8. Initial retrans. Attempts (IMR) from the header `_sbGenReCfg`
9. Cookie life (VCL) from the header `_sbSctSapReCfg`
10. HB interval (HBI) from the header `_sbSctSapReCfg`
11. SACK period (TSACK) from the header `_sbSctSapReCfg`
12. Streams per association (MIS/MOS) from the header `_sbGenCfG`
13. Maximum Transmission unit (MTU) from the header `_sbGenCfG`

The tool prompts you to enter the new value against the first parameter as shown below.

```
Enter values for the following parameters (just press 'return' to skip):
Maximum number of inbound streams "maxNmbInStrms" [ 1024 ] :
```

In this example, 1024 is the value that exists for the parameter in the `default.xml` file.

**Step 2** Type the new value and press ENTER or just press ENTER to skip and proceed to the next parameter. Perform this step for all parameters as shown below.

```
Enter values for the following parameters (just press 'return' to skip):
```

```

Maximum number of inbound streams "maxNmbInStrms" [ 1024 ] : 87
Maximum number of outbound streams "maxNmbOutStrms" [ 1024 ] : 90
Initial value of Maximum Transmission Unit "mtuInitial" [ 1500 ] :
Minimum Initial value of Maximum Transmission Unit "mtuMinInitial" [ 1500 ] : 65
Maximum Initial value of Maximum Transmission Unit "mtuMaxInitial" [ 1500 ] : 33
Maximum initial Retransmission "maxInitReTx" [ 5 ] : 9
Maximum association Retransmission "maxAssocReTx" [ 10 ] : 4
Maximum path Retransmission "maxPathReTx" [ 5 ] : 2
Alpha value "alpha" [ 12 ] : 15
Beta value "beta" [ 25 ] : 34
MaxAckDelayTm "maxAckDelayTm" [ 2 ] : 89<br>
  Initial value of Retransmission timeout "rtoInitial" [ 15 ] :
Minimum value of Retransmission timeout "rtoMin" [ 15 ] :
Maximum value of Retransmission timeout "rtoMax" [ 60 ] :
CookieLife "cookieLife" [ 60 ] : 67
IntervalTm "intervalTm" [ 15 ] : 89
Do you want to save all the changes? [ Yes/No ]yes

```

**Step 3** When prompted for a confirmation, type **Yes** and press ENTER to save the changes. The tool displays the modified parameters with the new and old values.

```

Changed Value of maxNmbInStrms is 87 <- 1024
Changed Value of maxNmbOutStrms is 90 <- 1024
Changed Value of mtuMinInitial is 65 <- 1500
Changed Value of mtuMaxInitial is 33 <- 1500
Changed Value of maxInitReTx is 9 <- 5
Changed Value of maxAssocReTx is 4 <- 10
Changed Value of maxPathReTx is 2 <- 5
Changed Value of alpha is 15 <- 12
Changed Value of beta is 34 <- 25
Changed Value of maxAckDelayTm is 89 <- 2
Changed Value of cookieLife is 67 <- 60
Changed Value of intervalTm is 89 <- 15
[root@ar-lnx-vm061 bin]#

```

## SIGTRAN-M3UA Logs

The following logs are applicable for SIGTRAN-M3UA:

- stack.log—Logs the interaction between Prime Access Registrar and STP/HLR.
- sm.log—Logs the internal debug information for SIGTRAN-M3UA stack manager.
- m3ua.log—Logs the inter-process communication between Prime Access Registrar and SIGTRAN-M3UA stack.
- cliActivity.log—Logs the initialization and command interactions.