



Creating and Viewing Reports

The reports function allows you to store and retrieve short and medium term historical data about the network traffic monitored by the NAM. The Reports tabs provides options for creating and viewing basic and custom reports. The tabs have options for:

- [Basic Reports, page 5-1](#)
- [Custom Reports, page 5-18](#)

Basic Reports

Basic reports allow you to view reports about a specific target, such as a network host or protocol. Basic reports can be customized and combined to create custom reports. For more information on customized reports, see the [“Custom Reports” section on page 5-18](#). These topics allow you to manage your basic reports:

- [Viewing the Basic Reports Table, page 5-2.](#)
- [Creating New Reports, page 5-3.](#)
- [Deleting a Report, page 5-15.](#)
- [Viewing Reports, page 5-15.](#)

Viewing the Basic Reports Table

Report data is stored in the NAM database for 100 days. Report data older than 100 days is overwritten sequentially by new report data.

Step 1 Click the Reports tab.

Step 2 Click **Basic Reports**.

The [Basic Reports Table](#) (Table 5-1) is displayed.

Table 5-1 Basic Reports Table

Field	Description
Basic Report Type	Filters the list of reports by report type.
Name	Name of the report.
Type	Type of statistic.
Data Source	Source of the report data.
Interval	The report data polling interval.
Create Time	Time the report was created.
Status	<ul style="list-style-type: none"> • OK—Enabled and data is being collected. • Disabled—No data is being collected. • Pending—Report is enabled, but no data collected. • Inactive Data Source—Data source was deleted.
	<p>Note If no data was collected, a time stamp displays the last collection.</p>

Enabling and Disabling Reports

Reports can be enabled or disabled directly from the Basic Reports table.

- To enable a report, select the report from the table, then click **Enable**. When a report is enabled, it continues to run until it is disabled.
- To disable a report, select the report from the table, then click **Disable**.



Note

Reports in the Basic Reports table are enabled by default.

Renaming a Report

Step 1 Select a report from the table and click **Rename**.

A text window appears.

Step 2 Enter the new name of the report and do one of the following:

- To accept the changes, click **OK**.
 - To delete the changes and return to the Basic Reports table, click **Cancel**.
-

Creating New Reports

Before you can create reports, you should make sure the applicable network traffic is being sent to the NAM and that monitoring functions are enabled for the type of statistic and data sources. For more information on enabling monitoring functions, see the [“Setting Up Data Collections” section on page 3-28](#).

WS-X6380-NAM, WS-SVC-NAM-1, and WS-SVC-NAM-2 devices have four reports created by default. There are reports for:

- Top ports—bytes per second.
- Top ports—packets per second.
- Top ports—utilization percentage.
- Top ports—packet drops per second.

NM-NAM devices also have four reports created by default. There are reports for:

- Top interfaces—bytes in.
- Top interfaces—bytes out.
- Top interfaces—utilization percentage in.
- Top interfaces—utilization percentage out.

**Note**

If you turn off collections on a data source on which a report is running, the reports function will automatically turn the collections back on.

Step 1 Click the Reports tab.

Step 2 Click **Basic Reports**.

The Basic Reports table is displayed.

Step 3 Click **Create**.

The Create Historical Report wizard is displayed. The following table shows the steps used to create a historical report.

	Wizard Page	Reference
Step 1	Select Report Type	“Selecting the Report Type” section on page 5-6
Step 2	Select Parameters	<ul style="list-style-type: none"> • For application statistics—“Selecting the Application Report Parameters” section on page 5-7. • For host statistics—“Selecting Host Report Parameters” section on page 5-8. • For conversation statistics—“Selecting Host Conversation Report Parameters” section on page 5-9. • For VLAN statistics—“Selecting VLAN Report Parameters” section on page 5-10. <p>Note VLAN statistics are not available on NM-NAM devices.</p> <ul style="list-style-type: none"> • For DiffServ statistics—“Selecting Differentiated Services Report Parameters” section on page 5-11. • For response time statistics—“Selecting Application Response Time Report Parameters” section on page 5-12. • For switch port statistics—“Selecting Switch Port Report Parameters” section on page 5-13. <p>Note Switch port statistics are not available on NM-NAM devices.</p> <ul style="list-style-type: none"> • For interface statistics—“Selecting Interface Statistics Report Parameters” section on page 5-14. <p>Note Interface statistics are only available on NM-NAM devices.</p>

Selecting the Report Type

Step 1 Select the report type.

Step 2 Click **Next**.

- If you selected Application, the Application Report Parameters dialog box appears. (See the [“Selecting the Application Report Parameters”](#) section on page 5-7.)
- If you selected Host, the Host Report dialog box appears. (See the [“Selecting Host Report Parameters”](#) section on page 5-8.)
- If you selected Conversation, the Host Conversation Report dialog box appears. (See the [“Selecting Host Conversation Report Parameters”](#) section on page 5-9.)
- If you selected VLAN, the VLAN Report Parameters dialog box appears. (See the [“Selecting VLAN Report Parameters”](#) section on page 5-10.)



Note VLAN statistics are not available on NM-NAM devices.

- If you selected Diff Serv, the Differentiated Services Report Parameters dialog box appears. (See the [“Selecting Differentiated Services Report Parameters”](#) section on page 5-11.)
- If you selected Response Time, the Application Response Time Report Parameters dialog box appears. (See the [“Selecting Application Response Time Report Parameters”](#) section on page 5-12.)

- If you selected Switch Port, the Switch Port Report Parameters dialog box appears. (See the [“Selecting Switch Port Report Parameters”](#) section on page 5-13.)



Note Switch port statistics are not available on NM-NAM devices.

- If you selected Interface Statistics, the Interface Statistics Report Parameters dialog box appears. (See the [“Selecting Interface Statistics Report Parameters”](#) section on page 5-14.)



Note Interface statistics are available only on NM-NAM devices.

Selecting the Application Report Parameters

The [Application Report Parameters Dialog Box](#) (Table 5-2) is displayed.

Table 5-2 Application Report Parameters Dialog Box

Field	Description	Usage Notes
Encapsulation	Protocol encapsulation type.	Select an encapsulation from the list.
Protocol	Name of the application protocol.	Select a protocol from the list.
Report Name	Name of the report.	The report name is generated automatically. To change the name of the report, select Customized, then enter the name.
Data Type	The type of data.	Select a type from the list.
Polling Interval	The interval in which the report data will be polled.	Select an interval from the list.
Data Source	The network traffic source from which report data will be collected.	Select a source from the list.

Do one of the following:

- To accept the changes, click **Finish**.
- To delete the changes and return to the Basic Reports table, click **Cancel**.

Selecting Host Report Parameters

The [Host Report Parameters Dialog Box](#) (Table 5-3) is displayed.

Table 5-3 Host Report Parameters Dialog Box

Field	Description	Usage Notes
Host name	The name of the host from which data is polled.	Enter the IPv4 host name or address of the host.
Encapsulation	Protocol encapsulation type.	Select an encapsulation from the list.
Protocol	Name of the application protocol.	Select a protocol from the list. This is optional.
Report Name	Name of the report.	The name of the report is generated generated. To change the name, click Customized, then enter the new name.
Data Type	The type of data.	Select a type from the list.
Polling Interval	The interval in which the report data will be polled.	Select an interval from the list.
Data Source	The network traffic source from which report data will be collected.	Select a source from the list.

Do one of the following:

- To accept the changes, click **Finish**.
- To delete the changes and return to the Basic Reports table, click **Cancel**.

Selecting Host Conversation Report Parameters

The [Host Conversation Report Parameters Dialog Box](#) (Table 5-4) is displayed.

Table 5-4 Host Conversation Report Parameters Dialog Box

Field	Description	Usage Notes
Host 1 and Host 2	The identification of the conversation hosts to be reported.	<ul style="list-style-type: none"> Host 1—Enter the IPv4 host name or address of host 1. Host 2—Enter the IPv4 host name or address of host 2.
Encapsulation	Protocol encapsulation type.	Select an encapsulation from the list.
Protocol	Name of the application protocol.	Select a protocol from the list.
Report Name	Name of the report.	The report name is automatically generated. To change the report name, click Customized and enter the name.
Data Type	The type of data.	Select a type from the list.
Polling Interval	The interval in which the report data will be polled.	Select an interval from the list.
Data Source	The network traffic source from which report data will be collected.	Select a source from the list.

Do one of the following:

- To accept the changes, click **Finish**.
- To delete the changes and return to the Basic Reports table, click **Cancel**.

Selecting VLAN Report Parameters



Note This section is not applicable to NM-NAM devices.

The [VLAN Report Parameters Dialog Box](#) (Table 5-5) is displayed.



Note VLAN reports are not available for NetFlow data sources.

Table 5-5 VLAN Report Parameters Dialog Box

Field	Description	Usage Notes
VLAN Number	Name or number of the VLAN to be reported.	Enter the VLAN name or number.
Top N VLANs	Reports the top N VLANs.	Click to select the reporting of the top N VLANs.
Report Name	Name of the report.	The report name is automatically generated. To change the report name, click Customized and enter the name.
Data Type	The type of data.	Select a type from the list.
Polling Interval	The interval in which the report data will be polled.	Select an interval from the list.
Data Source	The network traffic source from which report data will be collected.	Select a source from the list. Note Supervisor engine module-based data sources require Supervisor II engine module or later.

Do one of the following:

- To accept the changes, click **Finish**.
- To delete the changes and return to the Basic Reports table, click **Cancel**.

Selecting Differentiated Services Report Parameters

The [Differentiated Services Report Parameters Dialog Box](#) (Table 5-6) is displayed.

Table 5-6 *Differentiated Services Report Parameters Dialog Box*

Field	Description	Usage Notes
DiffServ Information	The identification of the differentiated services (DiffServ) statistics to be reported.	<ul style="list-style-type: none"> • DiffServ Profile—Select the name of the DiffServ profile. • Aggregation Group—Select the aggregation group. • Encapsulation—If the Protocol checkbox is selected, select an encapsulation from the list. • Protocol—If the Protocol checkbox is selected, select a protocol from the list. • Host Name—If the Host checkbox is selected, enter the IPv4 host name or address of the host (optional).
Report Name	Name of the report.	The report name is automatically generated. To change the report name, click Customized and enter the name.
Data Type	The type of data.	Select a type from the list.
Polling Interval	The interval in which the report data will be polled.	Select an interval from the list.
Data Source	The network traffic source from which report data will be collected.	Select a source from the list. Note NetFlow is not an available data source.

Do one of the following:

- To accept the changes, click **Finish**.
- To delete the changes and return to the Basic Reports table, click **Cancel**.

Selecting Application Response Time Report Parameters

The [Application Response Time Report Parameters Dialog Box](#) (Table 5-7) is displayed.

Table 5-7 Application Response Time Report Parameters Dialog Box

Field	Description	Usage Notes
Target	The identification of the application response time (ART) statistics to be reported.	<ul style="list-style-type: none"> • Encapsulation—Select an encapsulation from the list. • Protocol—Select a protocol from the list. • Server—Enter the name of the server. • Client—Enter the name of the client (optional).
Report Name	Name of the report.	The report name is automatically generated. To change the report name, click Customized and enter the name.
Data Type	The type of data.	Select a type from the list.
Polling Interval	The interval in which the report data will be polled.	Select an interval from the list.
Data Source	The network traffic source from which report data will be collected.	Select a source from the list. Note NetFlow is not an available data source.

Do one of the following:

- To accept the changes, click **Finish**.
- To delete the changes and return to the Basic Reports table, click **Cancel**.

Selecting Switch Port Report Parameters



Note

This section is not applicable to NM-NAM devices.

The [Switch Port Report Parameters Dialog Box](#) (Table 5-8) is displayed.

Table 5-8 *Switch Port Report Parameters Dialog Box*

Field	Description	Usage Notes
Switch Module/Port	List of switch modules and the corresponding ports available on the module.	Select a switch module and port to generate reports from.
Top N Ports	Reports the top N switch ports.	Click to select reporting of the top N ports. This requires mini-RMON to be enabled on the Supervisor engine module.
Report Name	Name of the report.	The report name is automatically generated. To change the report name, click Customized and enter the name.

Table 5-8 Switch Port Report Parameters Dialog Box (continued)

Field	Description	Usage Notes
Data Type	Type of data to be reported: <ul style="list-style-type: none"> • Bytes/sec • Packets/sec • Utilization % • Broadcast Bytes/sec • Multicast Bytes/sec • Drop Events/sec 	Select the data type from the list.
Polling Interval	The interval in which the report data will be polled.	Select an interval from the list.

Do one of the following:

- To accept the changes, click **Finish**.
- To delete the changes and return to the Basic Reports table, click **Cancel**.

Selecting Interface Statistics Report Parameters



Note

This section is only applicable to NM-NAM devices.

The [Interface Statistics Report Parameters Dialog Box](#) (Table 5-9) is displayed

Table 5-9 Interface Statistics Report Parameters Dialog Box

Field	Description	Usage Notes
Interface	List of interfaces.	Select an interface to generate reports from.
Top N Interfaces	Reports the top N interfaces.	Click to select reporting of the top N interfaces.

Table 5-9 Interface Statistics Report Parameters Dialog Box (continued)

Field	Description	Usage Notes
Report Name	Name of the report.	The report name is automatically generated. To change the report name, click Customized and enter the name.
Data Type	Type of data to be reported: <ul style="list-style-type: none"> • Bytes/sec • Packets/sec • Non-unicasts Packets/sec • Discarded Packets/sec • Error Packets/sec • Utilization 	Select the data type from the list.
Polling Interval	The interval in which the report data will be polled.	Select an interval from the list.

Do one of the following:

- To accept the changes, click **Finish**.
- To delete the changes and return to the Basic Reports table, click **Cancel**.

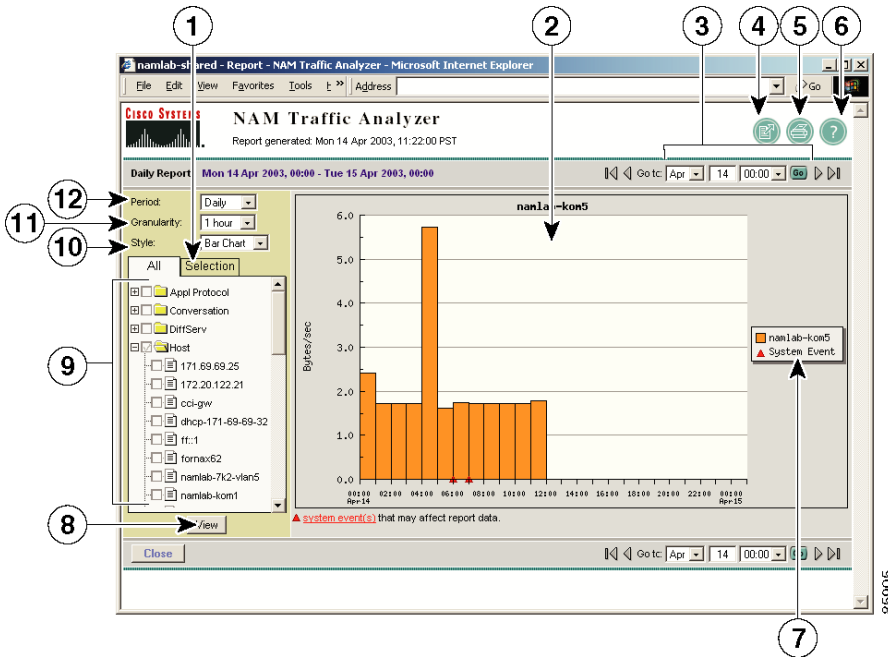
Deleting a Report

To delete a report, select the report from the Basic Reports table and click **Delete**.

Viewing Reports

To view a report, click the report name in the Basic Reports table, or select report and click **View**. The [Reports Window \(Figure 5-1\)](#) is displayed.

Figure 5-1 Reports Window



1	Displays the selected reports.	7	Name of the report.
2	Report graph.	8	Click to view the selected reports.
3	Navigated between time periods.	9	Select the target reports to be displayed.
4	Downloads the report to a file.	10	Style of the graph.
5	Prints the report.	11	Granularity of the report.
6	Launches the online help.	12	Length of the report time period.

**Note**

Only one Top N report can be selected.

Report granularity cannot exceed the polling frequency of the report. For example, a report with a 15-minute polling interval cannot be displayed with a 5-minute granularity. If you select a report granularity lower than the polling frequency, the report data will be aggregated accordingly.

A red exclamation mark will be displayed in the report selector for disabled reports and reports with error conditions. For more information on reports with error conditions, see the [Report Error Conditions](#) table (Table 5-10). System events that affect report data collection, such as changes in SPAN data sources are displayed as red triangles in tabular reports. Click **system events** to view a list of these events.

Table 5-10 Report Error Conditions

Error Condition	Description
Not Started	The report has not been created and data collection has not been started for this time period.
Data Pending	Data for the current period is being collected.
No Data	No data was collected for this period. This can be due to: <ul style="list-style-type: none"> • The report is disabled. • The NAM is not running. • the Report Data Collection task is not running.
No Activity	The NAM does not detect any traffic activity for this target. This can be caused by an inactive target or a data source configuration problem.
Not Monitored	The monitoring function for this type of traffic statistic is not enabled or is not available for the NAM and/or switch.



Tip

Move the mouse cursor over the report name in the report selector to see more information about the report.

Use the tabular report style to view numeric data and information about the errors or exception conditions related to the report data collection.

Custom Reports

After you create reports in the Basic Reports table, you can combine and customize them in the Custom Reports section.

These topics allow you to manage your custom reports:

- [Creating a Custom Report, page 5-18.](#)
- [Editing a Custom Report, page 5-19.](#)
- [Deleting a Custom Report, page 5-20.](#)
- [Viewing a Custom Report, page 5-20.](#)

Creating a Custom Report

Step 1 Click the Reports tab.

Step 2 Click **Custom Reports**.

The Custom Reports table is displayed.

Step 3 Click **Create**.

The [Create Custom Report Dialog Box](#) (Table 5-11) is displayed.

Table 5-11 Create Custom Report Dialog Box

Field	Usage Note
Report Name	Enter the name of the custom report
Folder	Select the folder you want the report to be in.
Period	Select the length of the report time period.
Granularity	Select the date granularity of the report.
Style	Select the style of the graph.
Report Data	Select the basic reports to include in the custom report. To view all of your selected reports, click the Selection tab.

- Step 4** Do one of the following:
- To accept the changes, click **Submit**.
 - To clear the changes, click **Reset**.
-

Creating a New Folder

You can create a new folder directly from the Custom Reports table to store additional custom reports.

- Step 1** Click **New Folder**.
- A text box appears.
- Step 2** Enter the name of the folder, then click **OK**.
- The new folder appears in the Custom Reports table.
-

Editing a Custom Report

- Step 1** Click the Reports tab.
- Step 2** Click **Custom Reports**.
- The Custom Reports table is displayed.
- Step 3** Select the custom report to edit, then click **Edit**.
- The Edit Custom Reports dialog box is displayed.
- Step 4** Make the necessary changes, then do one of the following:
- To accept the changes, click **Submit**.
 - To leave the configuration unchanged, click **Reset**.
-

Deleting a Custom Report

To delete a custom report, select it in the Custom Report table, then click **Delete**.

Viewing a Custom Report

-
- Step 1** Click the Reports tab.
- Step 2** Click **Custom Reports**.
The Custom Reports table is displayed.
- Step 3** Select the custom report to view, then click **View**.
The [Reports Window \(Figure 5-1\)](#) is displayed.
-

Moving a Custom Report to a Different Folder

-
- Step 1** Click the Reports tab.
- Step 2** Click **Custom Reports**.
The Custom Reports table is displayed.
- Step 3** Select the custom report to edit, then click **Edit**.
The Edit Custom Reports dialog box is displayed.
- Step 4** Select a new folder from the Folder drop-down list and click **Submit**.
-