



Cisco Managed Services Accelerator (MSX) 4.2 Release Notes

First Published: 2022-01-31

Americas Headquarters

Cisco Systems, Inc.
170 West Tasman Drive
San Jose, CA 95134-1706
USA
<http://www.cisco.com>
Tel: 408 526-4000
800 553-NETS (6387)
Fax: 408 527-0883

THE SPECIFICATIONS AND INFORMATION REGARDING THE PRODUCTS IN THIS MANUAL ARE SUBJECT TO CHANGE WITHOUT NOTICE. ALL STATEMENTS, INFORMATION, AND RECOMMENDATIONS IN THIS MANUAL ARE BELIEVED TO BE ACCURATE BUT ARE PRESENTED WITHOUT WARRANTY OF ANY KIND, EXPRESS OR IMPLIED. USERS MUST TAKE FULL RESPONSIBILITY FOR THEIR APPLICATION OF ANY PRODUCTS.

THE SOFTWARE LICENSE AND LIMITED WARRANTY FOR THE ACCOMPANYING PRODUCT ARE SET FORTH IN THE INFORMATION PACKET THAT SHIPPED WITH THE PRODUCT AND ARE INCORPORATED HEREIN BY THIS REFERENCE. IF YOU ARE UNABLE TO LOCATE THE SOFTWARE LICENSE OR LIMITED WARRANTY, CONTACT YOUR CISCO REPRESENTATIVE FOR A COPY.

The Cisco implementation of TCP header compression is an adaptation of a program developed by the University of California, Berkeley (UCB) as part of UCB's public domain version of the UNIX operating system. All rights reserved. Copyright © 1981, Regents of the University of California.

NOTWITHSTANDING ANY OTHER WARRANTY HEREIN, ALL DOCUMENT FILES AND SOFTWARE OF THESE SUPPLIERS ARE PROVIDED "AS IS" WITH ALL FAULTS. CISCO AND THE ABOVE-NAMED SUPPLIERS DISCLAIM ALL WARRANTIES, EXPRESSED OR IMPLIED, INCLUDING, WITHOUT LIMITATION, THOSE OF MERCHANTABILITY, FITNESS FOR A PARTICULAR PURPOSE AND NON-INFRINGEMENT OR ARISING FROM A COURSE OF DEALING, USAGE, OR TRADE PRACTICE.

IN NO EVENT SHALL CISCO OR ITS SUPPLIERS BE LIABLE FOR ANY INDIRECT, SPECIAL, CONSEQUENTIAL, OR INCIDENTAL DAMAGES, INCLUDING, WITHOUT LIMITATION, LOST PROFITS OR LOSS OR DAMAGE TO DATA ARISING OUT OF THE USE OR INABILITY TO USE THIS MANUAL, EVEN IF CISCO OR ITS SUPPLIERS HAVE BEEN ADVISED OF THE POSSIBILITY OF SUCH DAMAGES.

Any Internet Protocol (IP) addresses and phone numbers used in this document are not intended to be actual addresses and phone numbers. Any examples, command display output, network topology diagrams, and other figures included in the document are shown for illustrative purposes only. Any use of actual IP addresses or phone numbers in illustrative content is unintentional and coincidental.

Cisco and the Cisco logo are trademarks or registered trademarks of Cisco and/or its affiliates in the U.S. and other countries. To view a list of Cisco trademarks, go to this URL: <https://www.cisco.com/go/trademarks>. Third-party trademarks mentioned are the property of their respective owners. The use of the word partner does not imply a partnership relationship between Cisco and any other company. (1721R)

© 2022 Cisco Systems, Inc. All rights reserved.



CONTENTS

CHAPTER 1

About this Document 1

- Document Revision History 1
- Introduction 1
- Software Compatibility Matrix 2

CHAPTER 2

New Features and Enhancements 3

- Cisco MSX Platform Features and Enhancements 3
 - Platform Microservices 3
- Cisco MSX SD-WAN Service Pack Features and Enhancements 4
- Cisco MSX Managed Device Service Pack Features and Enhancements 5
- Cisco MSX Enterprise Access Service Pack Features and Enhancements 6
- Cisco MSX Portal Enhancement 7
- Cisco MSX Documentation Enhancement 8
- Important Notes 9

CHAPTER 3

Cisco MSX APIs 11

- API Version Lifecycle and Status 11
- Deprecated APIs 12
 - Deprecated APIs in Cisco MSX 4.2 12
 - Deprecated APIs in Cisco MSX 4.1 12
 - Retired APIs from Cisco MSX 12
 - Decommissioned APIs from Cisco MSX 4.1.0 19
 - Decommissioned APIs from Cisco MSX 4.2.0 20

APPENDIX A

Accessibility Features and Related Documentation 25

- Cisco MSX Bugs 25

[Accessibility Features](#) 25

[Related Documentation](#) 26

[Bias-free Doc Disclaimer](#) 27

[Full Cisco Trademarks with Software License](#) 27



CHAPTER 1

About this Document

This chapter provides an introduction of the Cisco Managed Services Accelerator (MSX) Platform and Service Packs.

- [Document Revision History](#), on page 1
- [Introduction](#), on page 1
- [Software Compatibility Matrix](#), on page 2

Document Revision History

Table 1: Document Revision History

Revision Date	Change Summary
January 28, 2022	This is the first version of this documentation.

Introduction

Cisco MSX is a service creation and delivery platform that enables fast deployment of cloud-based and on-premise networking services for both Enterprises and service providers customers. Through the combination of the Cisco MSX platform and service packs, the Cisco MSX solution offers a complete platform that enables the Service Providers and Enterprises to offer the next-generation network services.

Cisco MSX 4.2 is a SaaS-only release. For on-prem deployment, you must continue using release 3.10.

The components of Cisco MSX are listed here:

- Cisco MSX Platform—A common framework that supports the full range of service-creation requirements.
- Cisco MSX Service Packs—Pre-packaged software with capabilities for fully automating end-to-end service-creation, which includes ordering, service chaining, orchestration, service assurance, and all the necessary Virtualized Network Functions (VNFs) that need to be carried out on the Cisco MSX platform.
 - Cisco MSX SD-WAN Service Pack
 - Cisco MSX SD-Branch Service Pack
 - Cisco MSX Enterprise Access (EA) Service Pack

- Cisco MSX Managed Device Service Pack

This document also tells you how you can find information about known and resolved issues in Cisco MSX 4.2. For more information, see [Cisco Bug Search Tool](#).

Software Compatibility Matrix

The Cisco MSX 4.2 software compatibility matrix is given in this table below.

Cisco MSX Service Pack	NFVIS	NSO	Viptela SD-WAN Release	DNAC
SD-Branch 4.2	4.6	5.3.2.5	X	X
SD-WAN 4.2	4.6	5.3.2.5	20.6.1, 20.6.2, 20.6.2.1, 20.6.2.2	
Enterprise Access 4.2	X	X	X	2.2.2.8



CHAPTER 2

New Features and Enhancements

This chapter describes the new features and software compatibility matrix for Cisco MSX 4.2.

For detailed information about the features, see the documentation mentioned in [Related Documentation](#).

- [Cisco MSX Platform Features and Enhancements](#), on page 3
- [Cisco MSX SD-WAN Service Pack Features and Enhancements](#), on page 4
- [Cisco MSX Managed Device Service Pack Features and Enhancements](#), on page 5
- [Cisco MSX Enterprise Access Service Pack Features and Enhancements](#), on page 6
- [Cisco MSX Portal Enhancement](#), on page 7
- [Cisco MSX Documentation Enhancement](#), on page 8
- [Important Notes](#), on page 9

Cisco MSX Platform Features and Enhancements

The Cisco MSX 4.2 platform features and enhancements are given in the table below.

Platform Microservices

Features	Description	Category
Configuration Change Management Approvals	The MSX platform provides the Change Management and Approvals microservice to configure devices. It includes queuing change request for a device, submitting a change request for a device group, and formatting ServiceNow (SNOW) data. For more information, see Configuring Change Management Approvals .	Enhancement: GUI

Features	Description	Category
Change Management and Approvals for Device Configuration	<p>The MSX device configuration workflow includes a change request and approval capability. Modifications to an onboarded device require Change Management approval. A single change request made to the Change Management system for a consistent change impacts a group of devices. Instead of a per-device change request for the same configuration modification, users receive a single manageable change request to review and acknowledge.</p> <p>For more information, see Configuring Change Management Approvals.</p>	Enhancement: Process Change
Management Connectivity - Upgrade and Monitoring	<p>The TLS Gateway infrastructure now includes more management capabilities, such as monitoring and managing active connectivity devices, site updates, and management statistics.</p> <p>Note You need export approval for downloading the TLS Gateway VM image. For more details on the process, contact Cisco MSX product management.</p>	Enhancement: GUI
Template Service Enhancement	<p>The template service enhancement provides a workflow for assigning service templates to tenant tree members. When a service template is applied to a tenant, it applies to all its descendants. Thus, the user automatically inherits the template assignment when the template is assigned to its tenant ancestor.</p>	Enhancement: Process Change
Improved User Assistance	<p>Cisco MSX now includes Coachmarks that will guide first-time users on the tenant dashboard.</p>	Enhancement: GUI
MSX IDP-initiated Flow Support	<p>The MSX IDP now includes IDP initiated flow and validation against the Meraki implementation.</p> <p>For more information, see Configuring IDP-initiated SSO for Meraki.</p>	Enhancement: API
Tracing End-to-End HTTP Request in MSX	<p>MSX supports tracing end-to-end HTTP requests. MSX injects an X-B3-TraceID header into the requests to make it easier to trace an HTTP request. You can see the Trace ID by expanding the Notification where support is implemented.</p>	Enhancement: GUI

Cisco MSX SD-WAN Service Pack Features and Enhancements

The Cisco MSX 4.2 SD-WAN service pack features and enhancements are given in the table below.

Feature	Description	Category
Access SD-WAN Service Panel and SD-WAN Options in the New MSX GUI	<p>Using the new MSX GUI, a tenant can:</p> <ul style="list-style-type: none"> • Attach or create an Cisco SD-WAN control plane. For more information, see Creating Cisco SD-WAN Control Plane on AWS and Attaching Control Plane. • Edit, detach, or delete the Cisco SD-WAN control plane. For more information, see Detaching an SD-WAN Control Plane and Editing an SD-WAN Control Plane. • Assign one or more devices to a site. For more information, see Assigning a Device to a Site • Monitor and view the status of the Cisco SD-WAN control plane. For more information, see Monitoring SD-WAN Control Plane Status . • Unsubscribe from the Cisco SD-WAN service. For more information, see Unsubscribing the SD-WAN Service . • Setup and view traffic policies. For more information, see Configuring Traffic Policies. • Perform bulk import of device templates. For more information, see Importing Multiple Site Data from Cisco SD-WAN into MSX. <p>From the new MSX GUI, a tenant can now access legacy GUI to:</p> <ul style="list-style-type: none"> • Add device. • Manage Meraki service. 	New Feature: UI
Support for newer Cisco SD-WAN Releases	<p>Cisco MSX now supports the following Cisco SD-WAN versions: 20.6.1, 20.6.2, 20.6.2.1, 20.6.2.2.</p> <p>For more information, see Cisco SD-WAN and MSX Compatibility Matrix.</p>	Enhancement: General

Cisco MSX Managed Device Service Pack Features and Enhancements

The Cisco MSX 4.2 Managed Device service pack features and enhancement are given in the table below.

Feature	Description	Category
Switch Port Configuration Management	<p>Cisco MSX now provides the ability to configure multiple switch ports using an out-of-box feature template with predefined variables. In addition, users will have the ability to:</p> <ul style="list-style-type: none"> • Skip the variable configurations and configure these at a later point. • Use Tags to categorize entities based on common criteria. Tags can be region-based or department-based. Examples of Tags in a School system can be Classroom, Auditorium. • View configuration details and their statuses applied at the Device or port level. <p>For more information, see Configuring Switch Ports.</p>	New Feature: UI
Cross-Launch Support of Meraki from MSX	<p>Cisco MSX now provides the ability to cross-launch to Meraki Dashboard from within the MSX Portal.</p> <p>For more information, see Editing or Deleting a Network.</p>	New Feature: UI
Meraki Enhancement	<p>The MSX portal now allows you to assign or unassign the Meraki network to a site. For more information, see Assigning Meraki Network to a Site.</p>	New Feature: UI
Adding TLS Gateway for Device Management	<p>The TLS Gateway provides secure connectivity between MSX and devices behind a corporate firewall. This release adds additional management features like upgrades, active connected device monitoring and management, and additional metrics.</p> <p>Note You need export approval for downloading the TLS Gateway VM image. For more details on the process, contact Cisco MSX product management.</p>	New Feature: GUI
Enabling Compliance Monitoring over TLS Tunnel	<p>This feature enables the monitoring and remediation of device compliance over the TLS Gateway.</p>	New Feature: GUI

Cisco MSX Enterprise Access Service Pack Features and Enhancements

The Cisco MSX 4.2 Enterprise Access (EA) service pack features and enhancements are given in the table below.

Feature	Description	Category
Zero Touch On-Boarding: User Interface for Configuring Cisco DNA Center Appliance	This feature provides the ability to collect and configure a single Node or three Node Cluster using MSX GUI. For more information, see Deploying Cisco DNA Center Appliances .	New Feature: UI
Support for Custom DNA Center Port	This feature supports the ability to use a user-defined port when you add controllers to MSX. For more information, see Attaching Controllers to Cisco MSX .	New Feature: UI

There are some known issues on Cisco DNAC 2.2.2.8 that may impact the Enterprise Access flows. For more information, see [Important Notes](#).

Cisco MSX Portal Enhancement

From Cisco MSX 4.0 release onwards, MSX portal displays new GUI.

The Cisco MSX GUI has:

- The **Operator Workspace** is only visible to operator users. It lists all tenants that the operator is managing and the services they have subscribed to.

Click on a tenant's tile to see details specific to a tenant in the Tenant Workspace GUI.

- A **Tenant Workspace**, which allows tenants to access the information related to their subscribed services.

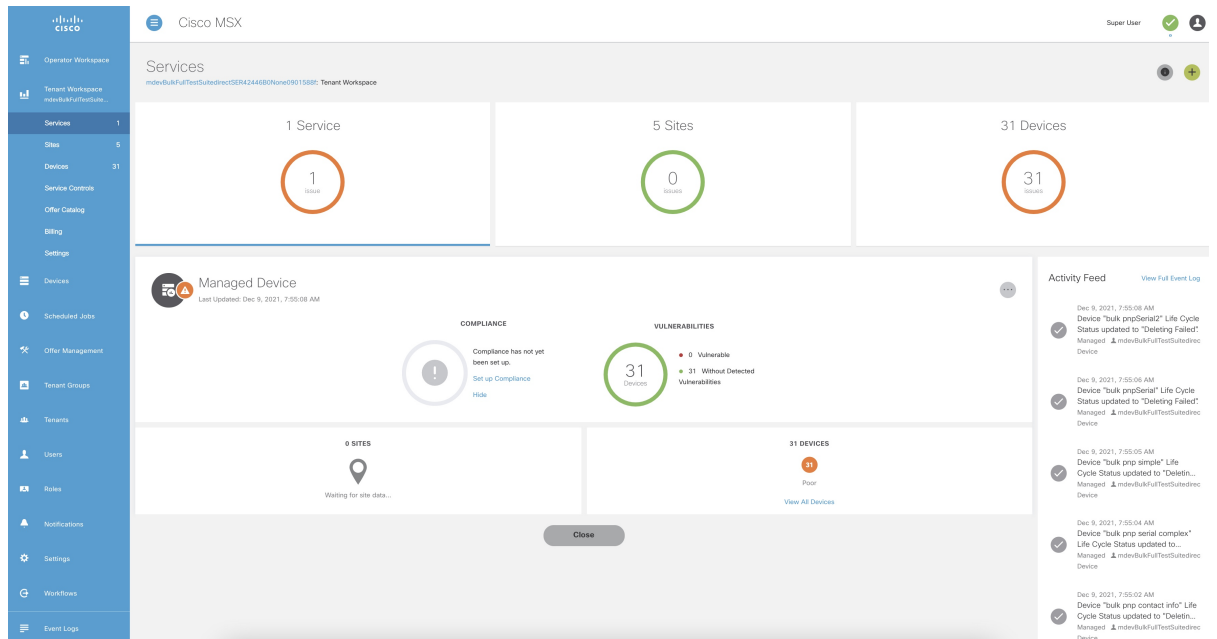
The menus that are available in the Tenant Workspace are:

- **Services**: Display all services subscribed by a tenant, service status, and other service metrics.
- **Sites**: Display an overview of the tenant's sites, site status, and allows access to site details.
- **Devices**: Display an overview of the tenant's devices, device status, and allows access to device details.
- **Service Controls**: Display the custom service controls that are used to manage the services.
- **Offer Catalog**: Display existing subscriptions and allows subscribing to new services.
- **Billing**: Display billing information about the tenant's subscriptions.
- **Activity Feed**: The Cisco MSX portal allows a tenant to view several events pertaining to the subscriptions, sites, devices, template, and services. The events that are logged in the **Events Log** window are also used in the Activity Feed. To view the Activity Feed, choose **Tenant Workspace > Services**. These contextual event feeds are also displayed on the **Sites Overview** window and **Devices Overview** window.

For more information on monitoring service status, see the *Cisco Managed Services Accelerator (MSX) 4.2 Administration Documentation* link in the [Related Documentation](#) table.

The figure below shows the Tenant Workspace:

Figure 1: Tenant Workspace



Cisco MSX Documentation Enhancement

From Release 4.0, a new documentation interface has been introduced for Cisco MSX for ease of search and better accessibility on Cisco.com. You can access this new interface at:

https://www.cisco.com/c/en/us/td/docs/net_mgmt/msx/end_user_doc/4_2/Cisco_MSX_End_User_Documentation.html

The following are the categories available on this new interface:

- **What's New:** Includes new features, enhancements, deprecated APIs for this release.
- **MSX Solution Overview:** Provides a comprehensive explanation of the design of Cisco MSX, a software solution that enables service providers and enterprises to develop and manage flexible and extensible network services.
- **MSX Guides:** Includes the following:
 - Details of post-install configuration information and administrative tasks required to set up the Cisco MSX.
 - Details of deploying SD-WAN, Managed Devices, and Enterprise Access services.
- **MSX Licensing:** Contains licenses and notices for Open Source software used in Cisco MSX product.
- **DevNet:** Contains details of various development tools like Service Design Studio (SDS), Template Development Environment (TDE), SDK, and so on.

Important Notes

Known Issues:

The following are the known issues on Cisco DNAC 2.2.2.8 that may impact the Enterprise Access flows:

- CSCwa48658: On the DN2-HW-APL hardware, when scaling up sites and devices, you may experience performance degradation and timeouts if the site count increases beyond 450.
- CSCwa75132: While adding a device, the DNAC device ID returned by creating device API will be replaced by a new device ID. In MSX, this may impact only when integrating with external applications. Therefore, we recommend that you update DNAC device ID after the MSX sync operations are performed.
- CSCwa74291: A provisioned device can not be deleted from MSX. Delete a device from the DNAC web interface.



CHAPTER 3

Cisco MSX APIs

This chapter contains the Cisco MSX APIs.

- [API Version Lifecycle and Status, on page 11](#)
- [Deprecated APIs, on page 12](#)

API Version Lifecycle and Status

Various API status are given below:

- **Active:** An active API version is the most current and fully supported API. It is the recommended version that should be used by everyone.
- **Deprecated:** A deprecated API version is superseded by a newer API version. It is available for the release in which it is deprecated and also available for one additional release.

For example, if an API is deprecated in release 1.2.0, this API will be available in release 1.3.0, but maybe decommissioned in release 1.4.0.

New consumers are denied access to the deprecated APIs (enforcement policy pending).

- **Retired:** A retired API version is an API that should have been decommissioned but due to extenuating circumstances, it is still in use. The API is no longer supported (no bug fixes) and it includes any API deprecated for more than two releases. Any application using a retired API must migrate to an active API.
- **Decommissioned:** A decommissioned API version is no longer available in production. This typically occurs after an API is deprecated in two releases.

State Transition

Active > Deprecated > Retired (Optional) > Decommissioned

Table 2: API Version Status Table

Active	Deprecated	Retired	Decommissioned
API is live in production.	API is live in production.	API is live in production.	API is NOT available in production.

Active	Deprecated	Retired	Decommissioned
Documentation*: Available for review at launch.	Documentation: Deprecated status indicated and posted on day of deprecation.	Documentation: Retired status indicated and posted on day of retirement.	Documentation: N/A
Support: Updated with bug fixes and new features are available.	Support: Updated with bug fixes for a release only.	Support: None	Support: None
Release Notes: Notify at launch.	Release Notes: Notify on release day; Announce when deprecated.	Release Notes: Notify prior release; Announce when retired.	Release Notes: Notify prior release.

Deprecated APIs

This section contains the list of deprecated APIs, retired APIs, and decommissioned APIs of Cisco MSX. The table below has both original APIs and the APIs that are replacing these original APIs.

The deprecated APIs are:

Deprecated APIs in Cisco MSX 4.2

No APIs have been deprecated.

Deprecated APIs in Cisco MSX 4.1

No APIs have been deprecated.

Retired APIs from Cisco MSX

The table below has APIs that had been deprecated from Cisco MSX releases and may be decommissioned at any time. For more information on retired status, see [API Version Lifecycle and Status](#).

Table 3: APIs Retired from Cisco MSX

Category		Deprecated API	Replacement API
Administration			
Global Settings	GET	/administration/api/v1/globalsettings	GET /administration/api/v2/globalsettings
Global Settings	PUT	/administration/api/v1/globalsettings	PUT /administration/api/v2/globalsettings/{globalSettingId}
Incident			

Category		Deprecated API	Replacement API
Configuration	GET	/incident/api/v1/config	GET /incident/api/v8/configurations, GET /incident/api/v8/configurations/{id}
Configuration	PATCH	/incident/api/v1/config	N/A
Configuration	PUT	/incident/api/v1/config	POST /incident/api/v8/configurations
Manage			
Device Templates	POST	/manage/api/v1/devicetemplates (MIME type: multipart/form-data)	POST /manage/api/v8/devicetemplates
Device Templates	DELETE	/manage/api/v3/devices/{deviceId}/ templates	DELETE /manage/api/v8/devices/{id}/templates
Device Templates	GET	/manage/api/v3/devices/{deviceId}/ templates	GET /manage/api/v8/devices/{id}/templates
Device Templates	POST	/manage/api/v3/devices/{deviceId}/ templates	POST /manage/api/v8/devices/{id}/templates
Device Templates	PUT	/manage/api/v3/devices/{deviceId}/ templates	PUT /manage/api/v8/devices/{id}/templates
Device Templates	DELETE	/manage/api/v3/devices/{deviceId}/ templates/{templateId}	DELETE /manage/api/v8/devices/{id}/templates /{templateId}
Device Templates	DELETE	/manage/api/v4/devices/{id}/ templates	DELETE /manage/api/v8/devices/{id}/templates
Device Templates	POST	/manage/api/v8/parameters/scan	N/A
Devices	GET	/manage/api/v1/devices/aggregate	N/A
Devices	GET	/manage/api/v3/devices/{deviceId}/ config	GET /manage/api/v8/devices/{id} /config
Devices	POST	/manage/api/v3/devices/{deviceId}/ redeploy	POST /manage/api/v8/devices/{id} /redeploy
Devices	GET	/manage/api/v4/devices	GET /manage/api/v8/devices
Devices	POST	/manage/api/v4/devices	POST /manage/api/v8/devices
Devices	DELETE	/manage/api/v4/devices/{id}	DELETE /manage/api/v8/devices/{id}
Devices	GET	/manage/api/v4/devices/{id}	GET /manage/api/v8/devices/{id}
Devices	PUT	/manage/api/v4/devices/{id}	PUT /manage/api/v8/devices/{id}, PATCH /manage/api/v8/devices/{id}
Services	DELETE	/manage/api/v1/serviceinstances/ {serviceInstanceId}	DELETE /manage/api/v8/services/{id}

Category		Deprecated API	Replacement API
Services	PUT	/manage/api/v1/serviceinstances/{serviceInstanceId}	PUT /manage/api/v8/services/{id}
Services	GET	/manage/api/v1/serviceinstances/subscriptions/{subscriptionId}	N/A
Services	POST	/manage/api/v1/serviceinstances/subscriptions/{subscriptionId}	POST /manage/api/v8/services
Services	POST	/manage/api/v1/services/{serviceId}/offers/{offerId}	POST /manage/api/v8/services/{serviceId}/offers/{offerId}
Services	PUT	/manage/api/v1/services/{serviceId}/offers/{offerId}	PUT /manage/api/v8/services/{serviceId}/offers/{offerId}
Services	GET	/manage/api/v2/serviceinstances/{serviceInstanceId}	GET /manage/api/v8/services/{id}
Services	GET	/manage/api/v2/serviceinstances/subscriptions/{subscriptionId}	N/A
Sites	GET	/manage/api/v2/site/device/{deviceInstanceId}	GET /manage/api/v8/sites/{id}
Sites	GET	/manage/api/v3/sites	GET /manage/api/v8/sites
Sites	POST	/manage/api/v3/sites	POST /manage/api/v8/sites
Sites	DELETE	/manage/api/v3/sites/{id}	DELETE /manage/api/v8/sites/{id}
Sites	GET	/manage/api/v3/sites/{id}	GET /manage/api/v8/sites/{id}
Sites	PUT	/manage/api/v3/sites/{id}	PUT /manage/api/v8/sites/{id}
Sites	DELETE	/manage/api/v3/sites/{id}/devices/{deviceId}	POST /manage/api/v8/sites/{id}/devices/remove
Sites	PUT	/manage/api/v3/sites/{id}/devices/{deviceId}	POST /manage/api/v8/sites/{id}/devices/add
Sites	DELETE	/manage/api/v3/sites/{id}/services/{serviceInstanceId}	POST /manage/api/v8/sites/{id}/services/remove
Sites	PUT	/manage/api/v3/sites/{id}/services/{serviceInstanceIds}	POST /manage/api/v8/sites/{id}/services/add
Sites	PUT	/manage/api/v3/sites/{id}/status	N/A
Monitor			
Metrics	GET	/monitor/api/v1/metrics/status/history	N/A
Query	PUT	/monitor/api/v1/query/devicehealth	PUT /monitor/api/v2/query/devicehealth

Category		Deprecated API	Replacement API
Query	GET	/monitor/api/v1/query/devicehealth/{deviceId}	GET /monitor/api/v2/query/devicehealth/{deviceId}
Query	POST	/monitor/api/v1/query/servicemetric	POST /monitor/api/v2/query
Query	PUT	/monitor/api/v1/query/servicemetric	PUT /monitor/api/v2/query/servicemetric
Query	DELETE	/monitor/api/v1/query/servicemetric/{serviceId}	DELETE /monitor/api/v2/query/servicemetric/{serviceId}
Query	GET	/monitor/api/v1/query/servicemetric/{serviceId}	GET /monitor/api/v2/query/servicemetric/{serviceId}
Query	GET	/monitor/api/v1/template/devicehealth	GET /monitor/api/v2/querytemplates/device
Query	POST	/monitor/api/v1/template/devicehealth	POST /monitor/api/v2/querytemplates/device
Query	DELETE	/monitor/api/v1/template/devicehealth/{type}/{profile}/{specificitytype}	DELETE /monitor/api/v2/querytemplates/device/{type}/{profile}/{specificitytype}
Query	GET	/monitor/api/v1/template/devicehealth/{type}/{profile}/{specificitytype}	GET /monitor/api/v2/querytemplates/device/{type}/{profile}/{specificitytype}
Query	GET	/monitor/api/v1/template/servicemetric	GET /monitor/api/v2/querytemplates/service
Query	POST	/monitor/api/v1/template/servicemetric	POST /monitor/api/v2/querytemplates/service
Query	DELETE	/monitor/api/v1/template/servicemetric/{servicename}	DELETE /monitor/api/v2/querytemplates/service/{servicename}
Query	GET	/monitor/api/v1/template/servicemetric/{servicename}	GET /monitor/api/v2/querytemplates/service/{servicename}
Health	GET	/monitor/api/v2/health/devices	N/A
Health	GET	/monitor/api/v2/health/services	N/A
Orchestration			
Catalogs	GET	/orchestration/api/v1/shards/{shardId}/config/catalog/	GET /orchestration/api/v1/services/{serviceType}/config/catalog/
Catalogs	POST	/orchestration/api/v1/shards/{shardId}/config/catalog/	PUT /orchestration/api/v1/services/{serviceType}/config/catalog/{id}
Catalogs	DELETE	/orchestration/api/v1/shards/{shardId}/config/catalog/{id}	DELETE /orchestration/api/v1/services/{serviceType}/config/catalog/{id}
Catalogs	GET	/orchestration/api/v1/shards/{shardId}/config/catalog/{id}	GET /orchestration/api/v1/services/{serviceType}/config/catalog/{id}
Catalogs	PUT	/orchestration/api/v1/shards/{shardId}/config/catalog/{id}	PUT /orchestration/api/v1/services/{serviceType}/config/catalog/{id}
NSDs	GET	/orchestration/api/v1/shards/{shardId}/config/nfvo/nsd/	GET /orchestration/api/v1/services/{serviceType}/config/nfvo/nsd/

Category		Deprecated API	Replacement API
NSDs	POST	/orchestration/api/v1/shards/{shardId}/config/nfvo/nsd/	PUT /orchestration/api/v1/services/{serviceType}/config/nfvo/nsd/{id}
NSDs	DELETE	/orchestration/api/v1/shards/{shardId}/config/nfvo/nsd/{id}	DELETE /orchestration/api/v1/services/{serviceType}/config/nfvo/nsd/{id}
NSDs	GET	/orchestration/api/v1/shards/{shardId}/config/nfvo/nsd/{id}	GET /orchestration/api/v1/services/{serviceType}/config/nfvo/nsd/{id}
NSDs	PUT	/orchestration/api/v1/shards/{shardId}/config/nfvo/nsd/{id}	PUT /orchestration/api/v1/services/{serviceType}/config/nfvo/nsd/{id}
Other	POST	/orchestration/api/v1/subscription	POST /orchestration/api/v1/submit
VNFDs	GET	/orchestration/api/v1/shards/{shardId}/config/nfvo/vnfd/	GET /orchestration/api/v1/services/{serviceType}/config/nfvo/vnfd/
VNFDs	POST	/orchestration/api/v1/shards/{shardId}/config/nfvo/vnfd/	PUT /orchestration/api/v1/services/{serviceType}/config/nfvo/vnfd/{id}
VNFDs	DELETE	/orchestration/api/v1/shards/{shardId}/config/nfvo/vnfd/{id}	DELETE /orchestration/api/v1/services/{serviceType}/config/nfvo/vnfd/{id}
VNFDs	GET	/orchestration/api/v1/shards/{shardId}/config/nfvo/vnfd/{id}	GET /orchestration/api/v1/services/{serviceType}/config/nfvo/vnfd/{id}
VNFDs	PUT	/orchestration/api/v1/shards/{shardId}/config/nfvo/vnfd/{id}	PUT /orchestration/api/v1/services/{serviceType}/config/nfvo/vnfd/{id}
Service Configuration			
Applications	POST	/template/api/v1/serviceconfigurations/{serviceConfigId}/applications/{applicationId}/status	PATCH /template/api/v8/templates/applications/{id}
Applications	GET	/template/api/v1/serviceconfigurations/{serviceConfigId}/applications/target/{targetEntityType}/{targetEntityId}	GET /template/api/v8/templates/applications
Applications	GET	/template/api/v1/serviceconfigurations/applications	GET /template/api/v8/templates/applications
Applications	POST	/template/api/v1/serviceconfigurations/applications	POST /template/api/v8/templates/{id}/applications
Applications	DELETE	/template/api/v1/serviceconfigurations/applications/{id}	DELETE /template/api/v8/templates/applications/{id}
Applications	GET	/template/api/v1/serviceconfigurations/applications/{id}	GET /template/api/v8/templates/applications/{id}
Application Audit	GET	/template/api/v1/serviceconfigurations/applications/audits	GET /template/api/v8/templates/applications/{id}/history
Assignments	GET	/template/api/v1/serviceconfigurations/assign/{id}	GET /template/api/v8/templates/assignments/{id}
Assignments	DELETE	/template/api/v1/serviceconfigurations/assign/{serviceConfigId}	POST /template/api/v8/templates/{id}/assignments/remove

Category		Deprecated API	Replacement API
Assignments	POST	/template/api/v1/serviceconfigurations/assign/{serviceConfigId}	POST /template/api/v8/templates/{id}/assignments/add
Assignments	GET	/template/api/v1/serviceconfigurations/assign/all	GET /template/api/v8/templates/assignments
Assignments	GET	/template/api/v1/serviceconfigurations/assign/config/{serviceConfigId}	GET /template/api/v8/templates/assignments
Assignments	POST	/template/api/v1/serviceconfigurations/assign/events/{serviceConfigId}/{assignedTenantId}	PATCH /template/api/v8/templates/assignments/{id}
Assignments	GET	/template/api/v1/serviceconfigurations/assign/tenants/{serviceConfigId}	GET /template/api/v8/templates/assignments
Audit	GET	/template/api/v1/serviceconfigurations/audit/all	N/A
Audit	GET	/template/api/v1/serviceconfigurations/audit/byScId/{serviceConfigId}	GET /template/api/v8/templates/{id}/history
Audit	GET	/template/api/v1/serviceconfigurations/audit/byTenantId/{tenantId}	N/A
Configurations	GET	/template/api/v1/serviceconfigurations	GET /template/api/v8/templates
Configurations	POST	/template/api/v1/serviceconfigurations	POST /template/api/v8/templates
Configurations	PUT	/template/api/v1/serviceconfigurations	N/A
Configurations	DELETE	/template/api/v1/serviceconfigurations/{serviceConfigId}	DELETE /template/api/v8/templates/{id}
Configurations	GET	/template/api/v1/serviceconfigurations/{serviceConfigId}	GET /template/api/v8/templates/{id}
Configurations	POST	/template/api/v1/serviceconfigurations/events/{serviceConfigId}	PATCH /template/api/v8/templates/{id}
Usermanagement/IDM			
Tenants	GET	/idm/api/v1/tenants/{tenantName}	GET /idm/api/v8/tenants/{id}
Tenants	GET	/idm/api/v3/tenants	GET /idm/api/v8/tenants
Tenants	POST	/idm/api/v3/tenants	POST /idm/api/v8/tenants
Tenants	PUT	/idm/api/v3/tenants/{id}	PUT /idm/api/v8/tenants/{id}
Tenants	GET	/idm/api/v3/tenants/{tenantId}	GET /idm/api/v8/tenants/{id}
Tenants	DELETE	/idm/api/v3/tenants/{tenantName}	DELETE /idm/api/v8/tenants/{id}
Users	GET	/idm/api/v1/pwdpolicy/userId/{userId}	GET /idm/api/v1/policies/{name}
Users	GET	/idm/api/v1/pwdpolicy/userId/{userId}/token/{token}	GET /idm/api/v1/pwdpolicy/userId/{userId}

Category		Deprecated API	Replacement API
Users	PUT	/idm/api/v1/update_password	PUT /idm/api/v8/users/{id}/updatepassword
Users	GET	/idm/api/v1/users/capabilities	GET /idm/api/v8/users/{id}, GET /idm/api/v8/roles/list
Users	PUT	/idm/api/v1/users/identity	PUT /idm/api/v8/users/{id}/updatepassword
Users	GET	/idm/api/v1/users/suggestPassword/{userId}/token/{token}	GET /idm/api/v1/users/suggestPassword/{userId}
Users	GET	/idm/api/v1/users/tenants	GET /idm/api/v8/users/{id}
Users	GET	/idm/api/v1/users/uuid/{id}	GET /idm/api/v8/users/{id}
Users	GET	/idm/api/v2/users	GET /idm/apiv8/users
Users	DELETE	/idm/api/v2/users/{id}	DELETE /idm/api/v8/users/{id}
Users	PUT	/idm/api/v2/users/{id}	PUT /idm/api/v8/users/{id}
Workflow			
Categories	GET	/workflow/api/v1/categories	GET /workflow/api/v8/categories/list
Categories	POST	/workflow/api/v1/categories	POST /workflow/api/v8/categories
Categories	DELETE	/workflow/api/v1/categories/{id}	DELETE /workflow/api/v8/categories/{id}
Categories	GET	/workflow/api/v1/categories/{id}	GET /workflow/api/v8/categories/{id}
Categories	PUT	/workflow/api/v1/categories/{id}	PUT /workflow/api/v8/categories/{id}
Events	GET	/workflow/api/v1/events	GET /workflow/api/v8/events/list
Events	POST	/workflow/api/v1/events	POST /workflow/api/v8/events
Events	DELETE	/workflow/api/v1/events/{id}	DELETE /workflow/api/v8/categories/{id}
Events	GET	/workflow/api/v1/events/{id}	GET /workflow/api/v8/events/{id}
Events	PUT	/workflow/api/v1/events/{id}	PUT /workflow/api/v8/categories/{id}
Schemas	GET	/workflow/api/v1/schemas	GET /workflow/api/v8/schemas/list
Schemas	GET	/workflow/api/v1/schemas/{id}	GET /workflow/api/v8/schemas/{id}
Targets	GET	/workflow/api/v1/targets	GET /workflow/api/v8/targets/list
Targets	POST	/workflow/api/v1/targets	POST /workflow/api/v8/targets
Targets	DELETE	/workflow/api/v1/targets/{id}	DELETE /workflow/api/v8/targets/{id}

Category		Deprecated API	Replacement API
Targets	GET	/workflow/api/v1/targets/{id}	GET /workflow/api/v8/targets/{id}
Targets	PUT	/workflow/api/v1/targets/{id}	PUT /workflow/api/v8/targets/{id}
Workflow Instances	DELETE	/workflow/api/v1/workflows/instances/{id}	DELETE /workflow/api/v8/workflows/instances/{id}
Workflow Instances	GET	/workflow/api/v1/workflows/instances/{id}	GET /workflow/api/v8/workflows/instances/{id}
Workflow Instances	GET	/workflow/api/v1/workflows/instances/{id}/actions/{actionId}	GET /workflow/api/v8/workflows/instances/{id}/actions/{actionId}
Workflow Instances	POST	/workflow/api/v1/workflows/instances/{id}/cancel	POST /workflow/api/v8/workflows/instances/{id}/cancel
Workflows	POST	/workflow/api/v1.1/workflows	N/A
Workflows	GET	/workflow/api/v1/workflows	GET /workflow/api/v8/workflows/list
Workflows	POST	/workflow/api/v1/workflows	POST /workflow/api/v8/workflows
Workflows	DELETE	/workflow/api/v1/workflows/{id}	DELETE /workflow/api/v8/workflows/{id}
Workflows	GET	/workflow/api/v1/workflows/{id}	GET /workflow/api/v8/workflows/{id}
Workflows	PUT	/workflow/api/v1/workflows/{id}	PUT /workflow/api/v8/workflows/{id}
Workflows	GET	/workflow/api/v1/workflows/{id}/export	GET /workflow/api/v8/workflows/{id}/export
Workflows	GET	/workflow/api/v1/workflows/{id}/instances	GET /workflow/api/v8/workflows/{id}/instances/list
Workflows	POST	/workflow/api/v1/workflows/{id}/start	POST /workflow/api/v8/workflows/{id}/start
Workflows	GET	/workflow/api/v1/workflows/{id}/startconfig	GET /workflow/api/v8/workflows/{id}/startconfig
Workflows	POST	/workflow/api/v1/workflows/{id}/validate	POST /workflow/api/v8/workflows/{id}/validate
Workflows	GET	/workflow/api/v1/workflows/mapping/uniqueName/{uniqueName}	GET /workflow/api/v8/workflows/mapping/uniqueName/{uniqueName}

Decommissioned APIs from Cisco MSX 4.1.0

No APIs have been decommissioned.

Decommissioned APIs from Cisco MSX 4.2.0

The table below has deprecated APIs that are removed from Cisco MSX 4.2.0. For more information on decommissioned status, see [API Version Lifecycle and Status](#).

Table 4: APIs Decommissioned from Cisco MSX 4.2.0

Category		Deprecated API	Replacement API
Manage			
Devices	GET	/manage/api/v3/devices	GET /manage/api/v8/devices
Devices	DELETE	/manage/api/v3/devices/{deviceId}	DELETE /manage/api/v8/devices/{id}
Services	GET	/manage/api/v1/servicecancellation/ serviceinstance/{serviceInstanceId}	N/A
Services	GET	/manage/api/v1/serviceinstances	GET /manage/api/v8/services
Services	GET	/manage/api/v1/serviceinstances/ {serviceInstanceId}	GET /manage/api/v8/services/{id}
Services	GET	/manage/api/v1/serviceinstances/ {serviceInstanceId}/devices	GET /manage/api/v4/devices
Services	POST	/manage/api/v1/services/list	GET /manage/api/v8/services
Services	GET	/manage/api/v1/services/summary	N/A
Services	GET	/manage/api/v2/serviceinstances	POST /manage/api/v8/services
Services	GET	/manage/api/v3/serviceinstances	GET /manage/api/v8/services
Sites	POST	/manage/api/v2/sites	GET /manage/api/v8/sites
Subscriptions	GET	/manage/api/v1/subscription/ {subscriptionId}	GET /manage/api/v2/subscriptions/ {subscriptionId}
Subscriptions	PUT	/manage/api/v1/subscriptions/ {subscriptionId}	PUT /manage/api/v2/subscriptions/ {subscriptionId}
Subscriptions	DELETE	/manage/api/v1/subscriptions/ {subscriptionId}	DELETE /manage/api/v2/subscriptions/ {subscriptionId}
Subscriptions	POST	/manage/api/v1/subscriptions/ {subscriptionId}/sites	PUT /manage/api/v2/subscriptions/ {subscriptionId}
Subscriptions	PUT	/manage/api/v1/subscriptions/ {subscriptionId}/subscriptionName	PUT /manage/api/v2/subscriptions/ {subscriptionId}
Subscriptions	GET	/manage/api/v1/subscriptions/ approvals	N/A
Subscriptions	PUT	/manage/api/v1/subscriptions/ approvals	N/A
Subscriptions	GET	/manage/api/v1/subscriptions/ servicetype/{serviceType}/ subscriptionId/{subscriptionId}	GET /manage/api/v3/subscriptions

Category		Deprecated API	Replacement API
Subscriptions	GET	/manage/api/v1/subscriptions/tenantids/{tenantIds}	GET /manage/api/v3/subscriptions
Subscriptions	GET	/manage/api/v1/subscriptions/user	GET /manage/api/v3/subscriptions
Usermanagement/IDM			
Auth	POST	/idm/api/v1/accesstoken	POST/auth/v2/token
Auth	POST	/idm/api/v1/login	POST /auth/v2/token
Auth	POST	/idm/api/v1/login2fa	N/A
Auth	PUT	/idm/api/v1/logout	POST /auth/v2/token
Auth	POST	/idm/api/v1/remotelogin	POST /auth/v2/token
Auth	POST	/idm/api/v1/resendotp	N/A
Auth	POST	/idm/api/v1/servicelogin	POST /auth/v2/token
Auth	PUT	/idm/api/v1/tenants/login/{tenantName}	POST /auth/v2/token
Auth	PUT	/idm/api/v1/tenants/user/endcontext	POST /auth/v2/token
Auth	PUT	/idm/api/v1/tenants/user/startcontext	POST /auth/v2/token
Auth	GET	/idm/apis/tokens/tokeninfo	POST /auth/v2/check_token
Identity Providers	POST	/idm/api/v1/idp/reset	N/A
Tenants	GET	/idm/api/v1/tenant/{tenantId}	GET /idm/api/v8/tenants/{id}
Tenants	GET	/idm/api/v1/tenants	GET /idm/api/v8/tenants
Tenants	POST	/idm/api/v1/tenants	POST /idm/api/v8/tenants
Tenants	PUT	/idm/api/v1/tenants	PUT /idm/api/v8/tenants/{id}
Tenants	DELETE	/idm/api/v1/tenants/{tenantName}	DELETE /idm/api/v8/tenants/{id}
Users	GET	/idm/api/v1/currentuser	GET /idm/api/v8/users/current
Users	POST	/idm/api/v1/fedusersbulk	POST /idm/api/v2/fedusers
Users	GET	/idm/api/v1/personalinfo	GET /idm/api/v8/users/{id}
Users	PUT	/idm/api/v1/personalinfo	PUT /idm/api/v8/users/{id}
Users	GET	/idm/api/v1/users	GET /idm/api/v8/users
Users	POST	/idm/api/v1/users	POST /idm/api/v8/users
Users	DELETE	/idm/api/v1/users/{userId}	DELETE /idm/api/v8/users/{id}

Category		Deprecated API	Replacement API
Users	GET	/idm/api/v1/users/{userid}	GET /idm/api/v8/users/{id}
Users	PUT	/idm/api/v1/users/{userId}	PUT /idm/api/v8/users/{id}
Users	GET	/idm/api/v1/users/{userId}/capabilities	GET /idm/api/v8/users/{id}
Users	PUT	/idm/api/v1/users/{userId}/deactivate	PUT /idm/api/v2/users/{id}/deactivate
Users	PUT	/idm/api/v1/users/{userId}/roles	PUT /idm/api/v8/users/{id}
Users	GET	/idm/api/v1/users/{userId}/tenants	GET /idm/api/v8/users/{id}
Users	PUT	/idm/api/v1/users/{userId}/tenants	PUT /idm/api/v8/users/{id}
Users	PUT	/idm/api/v1/users/uuid/{id}/deactivate	PUT /idm/api/v2/users/{id}/deactivate
Users	GET	/idm/api/v2/fedusers	N/A
Users	GET	/idm/api/v2/fedusers/{id}	N/A
Users	DELETE	/idm/api/v2/fedusers/{id}	DELETE /idm/api/v8/users/{id}
Users	GET	/idm/api/v2/users/{id}	GET /idm/api/v8/users/{id}
Users	GET	/idm/api/v2/users/details/ids	GET /idm/api/v8/users/{id}
Users	POST	/idm/api/v2/users/search	GET /idm/api/v2/users/search
APIs Decommissioned in Managed Device			
Site	DELETE	/manageddevice/api/v1/sites/{siteId}/forceDelete	N/A
Site	POST	/manageddevice/api/v1/sites/editTemplateValues	N/A
Site	DELETE	/manageddevice/api/v2/sites	N/A
Site	DELETE	/manageddevice/api/v2/sites/{siteId}	N/A
Site	DELETE	/manageddevice/api/v2/sites/{siteId}/templateHistory/{templateHistoryId}	N/A
Site	DELETE	/manageddevice/api/v2/sites/{siteId}/templates/{templateId}	N/A
Site	POST	/manageddevice/api/v2/sites/removeTemplate	N/A
Site	GET	/manageddevice/api/v3/sites	N/A
Site	POST	/manageddevice/api/v3/sites	N/A
Site	GET	/manageddevice/api/v3/sites/{siteId}	N/A
Site	PUT	/manageddevice/api/v3/sites/{siteId}/serial/{serial}	N/A

Category		Deprecated API	Replacement API
Site	DELETE	/manageddevice/api/v3/sites/{siteId}/templateinstances	N/A
Site	POST	/manageddevice/api/v3/sites/applyTemplate	N/A
Site	GET	/manageddevice/api/v4/sites	N/A
Template	GET	/manageddevice/api/v1/templatehistory	N/A
Template	GET	/manageddevice/api/v2/templatehistory	N/A
Template	GET	/manageddevice/api/v1/templateinstances	GET /manage/api/v8/devices/{id}/templates
Template	POST	/manageddevice/api/v1/templateinstances	POST /manage/api/v8/devices/{id}/templates
Template	PUT	/manageddevice/api/v1/templateinstances	PUT /manage/api/v8/devices/{id}/templates
Template	DELETE	/manageddevice/api/v1/templateinstances/{templateInstanceId}	DELETE /manage/api/v8/devices/{id}/templates/{instanceId}
Template	GET	/manageddevice/api/v1/templateinstances/{templateInstanceId}/history	N/A
Template	GET	/manageddevice/api/v1/templates	GET /manage/api/v8/devicetemplates/admin/list
Template	POST	/manageddevice/api/v1/templates	POST /manage/api/v8/devicetemplates
Template	GET	/manageddevice/api/v1/templates/{templateId}	GET /manage/api/v8/devicetemplates/{id}
Template	DELETE	/manageddevice/api/v1/templates/{templateId}	DELETE /manage/api/v8/devicetemplates/{id}
Template	POST	/manageddevice/api/v1/templates/parameters	POST /manage/api/v1/devicetemplates/parameters
Template	POST	/manageddevice/api/v2/templates	POST /manage/api/v8/devicetemplates
Template	POST	/manageddevice/api/v2/templates/parameters	POST /manage/api/v1/devicetemplates/parameters



APPENDIX **A**

Accessibility Features and Related Documentation

This chapter describes the accessibility features and related documentation for Cisco MSX 4.2.

- [Cisco MSX Bugs, on page 25](#)
- [Accessibility Features, on page 25](#)
- [Related Documentation, on page 26](#)
- [Bias-free Doc Disclaimer, on page 27](#)
- [Full Cisco Trademarks with Software License, on page 27](#)

Cisco MSX Bugs

You can get details about the known and resolved issues in Cisco MSX 4.2 using the Cisco Bug Search Tool.

- **Bug Search Tool Requirements:** If you do not have a Cisco account, register for one at <https://tools.cisco.com/RPF/register/register.do>.
- You can filter for Known and Fixed Issues in the [Bug Search Tool](#).

From the **Product** drop-down list, choose **Series/Model**. Enter the **Cisco Managed services Accelerator** in the product field. You can also choose the product from the **Select from list**. Enter the version as **4.2** or **4.2.0** in the **Releases** field.

For more help and FAQ about the Cisco Bug Search Tool, see the [Bug Search Tool Help](#) page.

Accessibility Features

For a list of accessibility features in Cisco MSX, see [Voluntary Product Accessibility Template \(VPAT\)](#) on the Cisco.com, or contact accessibility@cisco.com.

All product documents, except for images, graphs, and some charts are accessible. If you want to receive the product documentation in audio format, braille, or large print, contact accessibility@cisco.com.

Related Documentation

You can access Cisco MSX 4.2.0 content at https://www.cisco.com/c/en/us/td/docs/net_mgmt/msx/end_user_doc/4_2/Cisco_MSX_End_User_Documentation.html.

The documents listed here are available for additional reference. To access API documentation on the Swagger GUI, log in to the MSX GUI and navigate to **My Profile > Swagger API**.

Cisco MSX SDK documentation is available at <https://developer.cisco.com/site/msx/>.

Document	Description
Cisco Managed Services Accelerator (MSX) 4.2 Release Notes Documentation	This documentation provides information about the new features in Cisco Managed Services Accelerator (MSX) 4.2.
Cisco Managed Services Accelerator (MSX) 4.2 Administration Documentation	This documentation covers the post-install configuration information that is required to set up MSX.
Cisco Managed Services Accelerator (MSX) 4.2 Platform and Service Pack Permissions Addendum	This addendum covers all the permissions that are required to operate MSX and the service packs.
Cisco Managed Services Accelerator (MSX) 4.2 SD-WAN Service Pack Documentation	This documentation includes details that are related to deploying, managing, configuring the Cisco MSX SD-WAN service pack, and troubleshooting service errors.
Cisco Managed Services Accelerator (MSX) 4.2 SD-WAN and Meraki Out-of-the-Box Applications Addendum	This document is an addendum to the <i>Cisco MSX SD-WAN Service Pack</i> content. It has details about the out-of-the-box applications of MSX 4.2 and the comparison of applications in older releases with applications in MSX 4.2 based on possible application mapping.
Cisco Managed Services Accelerator (MSX) 4.2 Enterprise Access Service Pack Documentation	This documentation includes details that are related to deploying, managing, configuring the Cisco MSX Enterprise Access service pack, and troubleshooting service errors.
Cisco Managed Services Accelerator (MSX) 4.2 Solution Overview Documentation	This documentation provides a comprehensive explanation of the design of the MSX solution that enables service providers to offer flexible and extensible services to their business customers.
Open Source Used in Cisco MSX and Service Packs Documentation	This documentation contains licenses and notices for Open Source software that is used in this product.

Bias-free Doc Disclaimer



Note The documentation set for this product strives to use bias-free language. For purposes of this documentation set, bias-free is defined as language that does not imply discrimination based on age, disability, gender, racial identity, ethnic identity, sexual orientation, socioeconomic status, and intersectionality. Exceptions may be present in the documentation due to language that is hardcoded in the user interfaces of the product software, language used based on RFP documentation, or language that is used by a referenced third-party product.

Full Cisco Trademarks with Software License

THE SPECIFICATIONS AND INFORMATION REGARDING THE PRODUCTS IN THIS MANUAL ARE SUBJECT TO CHANGE WITHOUT NOTICE. ALL STATEMENTS, INFORMATION, AND RECOMMENDATIONS IN THIS MANUAL ARE BELIEVED TO BE ACCURATE BUT ARE PRESENTED WITHOUT WARRANTY OF ANY KIND, EXPRESS OR IMPLIED. USERS MUST TAKE FULL RESPONSIBILITY FOR THEIR APPLICATION OF ANY PRODUCTS.

THE SOFTWARE LICENSE AND LIMITED WARRANTY FOR THE ACCOMPANYING PRODUCT ARE SET FORTH IN THE INFORMATION PACKET THAT SHIPPED WITH THE PRODUCT AND ARE INCORPORATED HEREIN BY THIS REFERENCE. IF YOU ARE UNABLE TO LOCATE THE SOFTWARE LICENSE OR LIMITED WARRANTY, CONTACT YOUR CISCO REPRESENTATIVE FOR A COPY.

The Cisco implementation of TCP header compression is an adaptation of a program developed by the University of California, Berkeley (UCB) as part of UCB's public domain version of the UNIX operating system. All rights reserved. Copyright © 1981, Regents of the University of California.

NOTWITHSTANDING ANY OTHER WARRANTY HEREIN, ALL DOCUMENT FILES AND SOFTWARE OF THESE SUPPLIERS ARE PROVIDED "AS IS" WITH ALL FAULTS. CISCO AND THE ABOVE-NAMED SUPPLIERS DISCLAIM ALL WARRANTIES, EXPRESSED OR IMPLIED, INCLUDING, WITHOUT LIMITATION, THOSE OF MERCHANTABILITY, FITNESS FOR A PARTICULAR PURPOSE AND NONINFRINGEMENT OR ARISING FROM A COURSE OF DEALING, USAGE, OR TRADE PRACTICE.

IN NO EVENT SHALL CISCO OR ITS SUPPLIERS BE LIABLE FOR ANY INDIRECT, SPECIAL, CONSEQUENTIAL, OR INCIDENTAL DAMAGES, INCLUDING, WITHOUT LIMITATION, LOST PROFITS OR LOSS OR DAMAGE TO DATA ARISING OUT OF THE USE OR INABILITY TO USE THIS MANUAL, EVEN IF CISCO OR ITS SUPPLIERS HAVE BEEN ADVISED OF THE POSSIBILITY OF SUCH DAMAGES.

Any Internet Protocol (IP) addresses and phone numbers used in this document are not intended to be actual addresses and phone numbers. Any examples, command display output, network topology diagrams, and other figures included in the document are shown for illustrative purposes only. Any use of actual IP addresses or phone numbers in illustrative content is unintentional and coincidental.

All printed copies and duplicate soft copies of this document are considered uncontrolled. See the current online version for the latest version.

Cisco has more than 200 offices worldwide. Addresses and phone numbers are listed on the Cisco website at www.cisco.com/go/offices.

Cisco and the Cisco logo are trademarks or registered trademarks of Cisco and/or its affiliates in the U.S. and other countries. To view a list of Cisco trademarks, go to this URL: <https://www.cisco.com/c/en/us/about/legal/trademarks.html>. Third-party trademarks mentioned are the property of their respective owners. The use of the word partner does not imply a partnership relationship between Cisco and any other company. (1721R)