



## CHAPTER 5

# Getting Started Using Cisco License Manager

---

This chapter provides information about the initial setup of Cisco License Manager and an overview of recommended steps to quickly add users and devices and obtain and deploy licenses. This chapter contains the following sections:

- [Before You Begin, page 5-1](#)
- [Getting Started Flowcharts, page 5-2](#)
- [Getting Started Checklist, page 5-3](#)
- [Configure Your Cisco Devices, page 5-4](#)
- [Log In, page 5-5](#)

## Before You Begin

Before you use Cisco License Manager to acquire, deploy, and centrally track and manage your Cisco licenses, you should do the following:

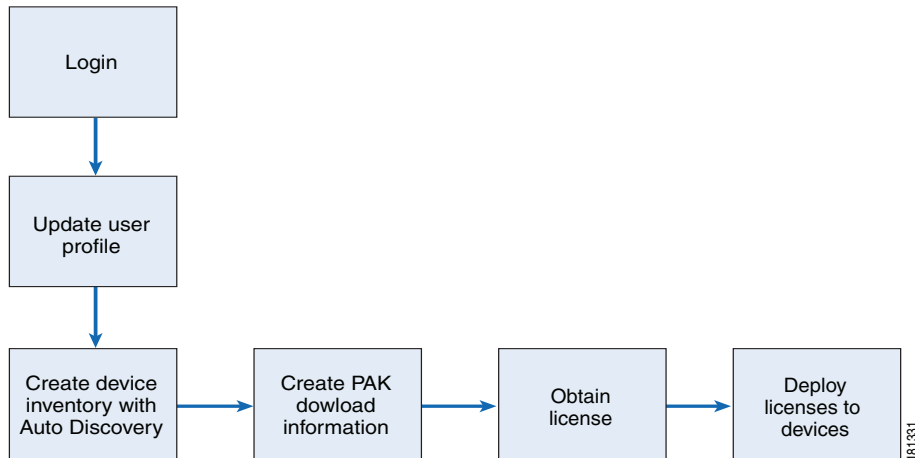
1. Verify that you have completed the checklist in the [“Required Preparations for Installation” section on page 3-4](#).
2. Install and configure Cisco License Manager.
3. Verify that your e-mail address and Cisco.com account username and password are correct in your user profile. This information is used to receive e-mails from Cisco.com. See the [“Edit a User’s Profile Information” section on page 6-2](#) for detailed instructions.
4. Configure your Cisco devices to allow Cisco License Manager to manage Cisco licenses using the **ip http server**, **license agent listener** and **ip http authentication** CLI commands for enabling or disabling device authorization. For a summary of these commands, see [“Configure Your Cisco Device to Authenticate Cisco License Manager” section on page 5-4](#). For detailed information about enabling the Cisco License Agent on your device, see your Cisco IOS or device documentation. If license agent is not enabled on the devices, Cisco License Manager can still manage licenses using Telnet or SSH.
5. If you are running Cisco License Manager on the Solaris platform, the embedded HTML browser is not used. A Mozilla browser is used to view the online help and reports. Verify that the Mozilla browser is present on your path.

# Getting Started Flowcharts

There are many features that make Cisco License Manager an easy tool for planning and managing your device licenses.

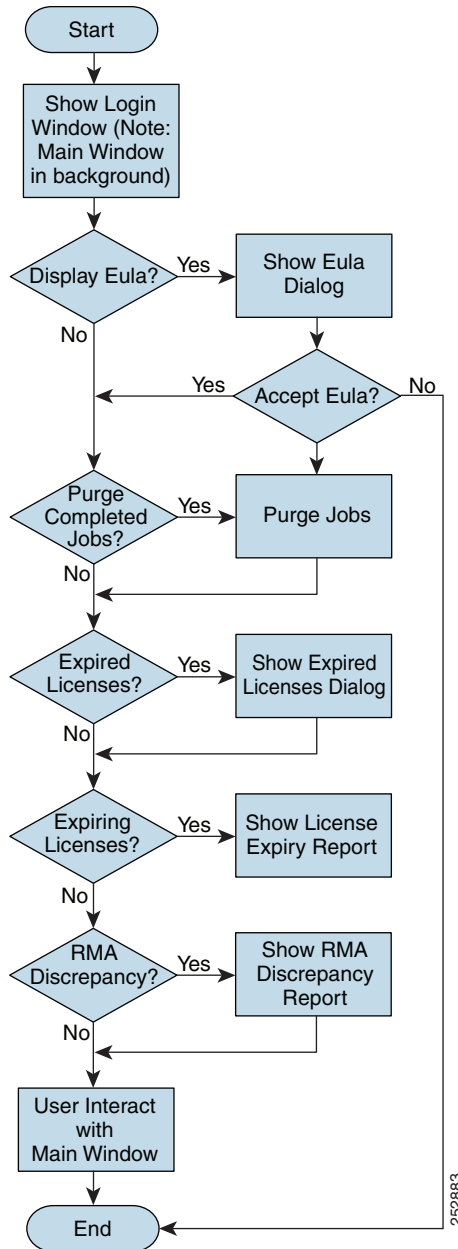
To find out how Cisco License Manager GUI starts up, see [Figure 5-2](#) for a quick start flowchart.

**Figure 5-1 Quick Start Flowchart**



To find out how to get started, see the flowchart in [Figure 5-2](#). This flowchart references all the features of Cisco License Manager. Note that not all tasks that appear in the flowchart are required; for example, creating device groups is optional.

Figure 5-2 Getting Started Flowchart



## Getting Started Checklist

Use the following sequence of tasks to learn how to use Cisco License Manager. This is a quick-start section designed to allow you to add a device quickly and deploy it. If you want to group your devices and PAKs, you may want to plan and set up your device groups and PAK folders first.

Check	Task
	1. Before You Begin, page 5-1
	2. Log In, page 5-5
	3. Add Cisco Devices to Your Inventory, page 7-1
	4. Update Device Information, page 7-18
	5. Add a PAK, page 7-20
	6. Download PAK Information, page 7-27
	7. Get a License Using License Assistant, page 8-2
	8. View License Properties, page 8-20
	9. Deploy a License, page 8-8

## Configure Your Cisco Devices

The following sections will help determine how to configure your Cisco devices to work with Cisco License Manager:

- [Configure Your Cisco Device to Authenticate Cisco License Manager, page 5-4](#)
- [Configure Your Device License Agent, page 5-5](#)
- [Authentication Methods, page 5-5](#)

## Configure Your Cisco Device to Authenticate Cisco License Manager

Cisco License Manager communicates with devices using HTTP/HTTPS, Telnet, or ssh (ssh v2 only). If Telnet or SSH is chosen as the connection method, use the **logging** *<server-IP-address>* command to configure the Cisco devices for direct notification to Cisco License Manager.

If you are using HTTP/HTTPS as your connection method, you must enable your device to recognize Cisco License Manager and enable Cisco License Manager to authenticate your device. These optional steps are necessary only if you want to use authentication on your device.

1. Configure the device to always use HTTP to authenticate incoming requests using the **ip http server** command. This is to enable the HTTP server on the Cisco IOS software, which is required by the License Agent.
2. Configure the License Agent using the **license agent listener http plaintext /lic-agent authenticate** command. (See [“Configure Your Device License Agent”](#) section on page 5-5.)
3. Specify a particular authentication method for the HTTP server to use using the **ip http authentication** command.

For detailed information about these commands, see your Cisco IOS software documentation. For a description of the authentication methods, see [“Authentication Methods”](#) section on page 5-5.

## Configure Your Device License Agent

To receive license-related notifications and alerts from your device, enter the following at the command line prompt:

```
license agent notify (notify_URL_in_propsfile) (username) (password)
```

**Note**

For the *notify\_URL\_in\_propsfile* URL, copy the URL from NOTIFY\_URL in the *clm.properties* file and replace the hostname portion of the URL with the Cisco License Manager server IP address.

## Authentication Methods

There are three methods by which you can authenticate your Cisco devices:

- Enable password
- Authentication, authorization, and accounting network security services
- Local username and password

The `ip http authentication` command enables you to specify a particular authentication method for HTTP server users. The HTTP server uses the enable password method to authenticate a user at privilege level 15. Using the `ip http authentication` command, you can specify `enable`, `local`, or AAA HTTP server user authentication.

**ip http authentication** {enable | aaa | local}

*enable* If the device is set up to use enable password to authenticate an HTTP request, you can leave the username blank and enter the enable password.

*aaa* If the device is set up to use authentication, authorization, and accounting network security services to authenticate an HTTP request, enter the AAA username and password.

*local* If the device is set up to use local username and password to authenticate an HTTP request, enter the local username and password.

The corresponding username and password pairs that you configure on a router are used during device creation or discovery in Cisco License Manager, and the information is placed in the inventory. You can also add usernames and passwords in the Add Device Login window when you use the Discover Device feature.

## Log In

After the installation setup, only the administrator can log into Cisco License Manager using the administrator username and password specified during setup. Once logged in to Cisco License Manager, the administrator can create other user accounts. To set up access for other users, see [“Manage Users” section on page 6-1](#).

**Note**

You may not be able to log in if the server does not support the client version that you are using.

**Tip**

To set up the administrator's profile or access for other users, see [“Edit a User's Profile Information” section on page 6-2.](#)

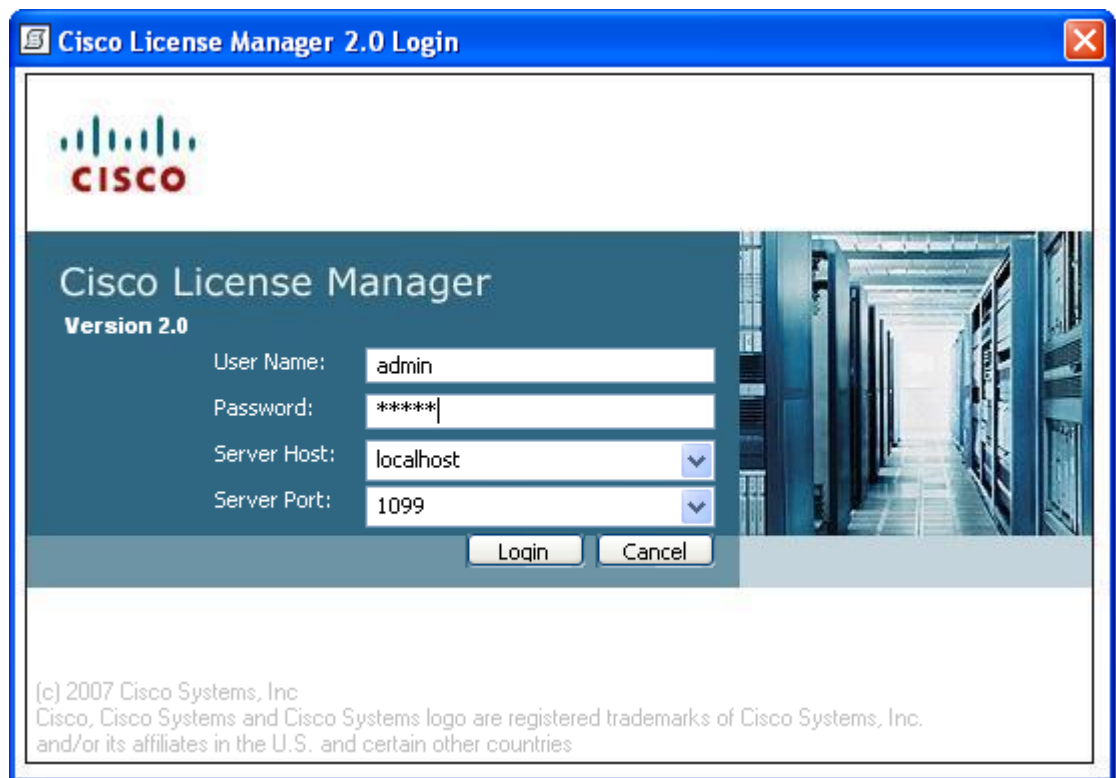
**Note**

The GUI supports up to 50 simultaneous users.

To log into Cisco License Manager, complete the following steps:

- Step 1** To log into the GUI in the Windows platform, go to **Start > All Programs > Cisco License Manager > CLM Server > Configure Server** to change the port after installation. To log into the GUI in the Solaris platform, launch the `$CLM_HOME/bin/clm_ui.sh` command.

The Login window appears.



- Step 2** Enter information in the following fields and click **OK**.

Field	Description
User Name	User's login name.
Password	User's password.

Field	Description
Server Host	IP address or fully qualified name of server. Can be left blank if client is working from server host. Default is localhost.
Server Port	Port where Cisco License Manager Server can be accessed. Port default is set to 1099. Port is set during setup.

Once your username and password are accepted, the Cisco License Manager end-user license agreement (EULA) for the Cisco devices appears.



**Note** If you are the administrator and need to change the port after installation, run the `$CISCO_LM_HOME\bin\runSetup.bat` program. If you are an operator, contact your administrator for details.

**Step 3** Select your acceptance or nonacceptance of the devices license agreement. If you choose not to accept the license agreement, the Cisco License Manager application terminates. If you choose “I agree,” you will be prompted with the EULA for Device window each time you login to Cisco License Manager.

Once you have accepted the license agreement, the Cisco License Manager main window appears.



**Note** Before you can receive license information from Cisco.com, you must add the required contact information to the administrator user profile. Go to **Tools > User Manager**, and see “[Manage Users](#)” section on page 6-1 for detailed instructions.

**Step 4** When you log in, a Purge Jobs dialog box may appear. If you want to purge all completed jobs from the View Job Status dialog box, click **Yes**. Once purged, these jobs cannot be retrieved.

