



Installation Overview

This guide describes the installation process using standalone installer. Cisco Prime Service Catalog comprises of two required component applications, Service Catalog and Service Link, and one optional component application called Reporting.

The installation is supported only on JBoss EAP application server and can be configured in a Cluster setup.



Note

Installation of Cisco Prime Service Catalog is not supported on Wildfly and Weblogic in the 12.1.1 release.

Subsequent sections in this chapter describes various deployment topologies for JBoss EAP Application Server.



Note

In this release, installation of Prime Service Catalog as a Virtual Appliance is not supported.



Note

Upgrade from any previous release of Prime Service Catalog to 12.1.1 release is not supported.

Deployment Topology

Prime Service Catalog can be set up only in a cluster mode.



Note

If you want to set up in standalone mode, install all the components on a single node.

The available topologies for cluster mode are:

- All Components
- Separate Component

All Components Topology

The following diagram shows an example of a All Components topology that has two horizontal nodes (i.e. two separate hosts) in a JBoss EAP cluster configuration. One Node Contains the Domain Controller, Host Controller 1 with Service Catalog, Host Controller 1 Service Link and another node contains Host Controller 2 with Service Catalog.

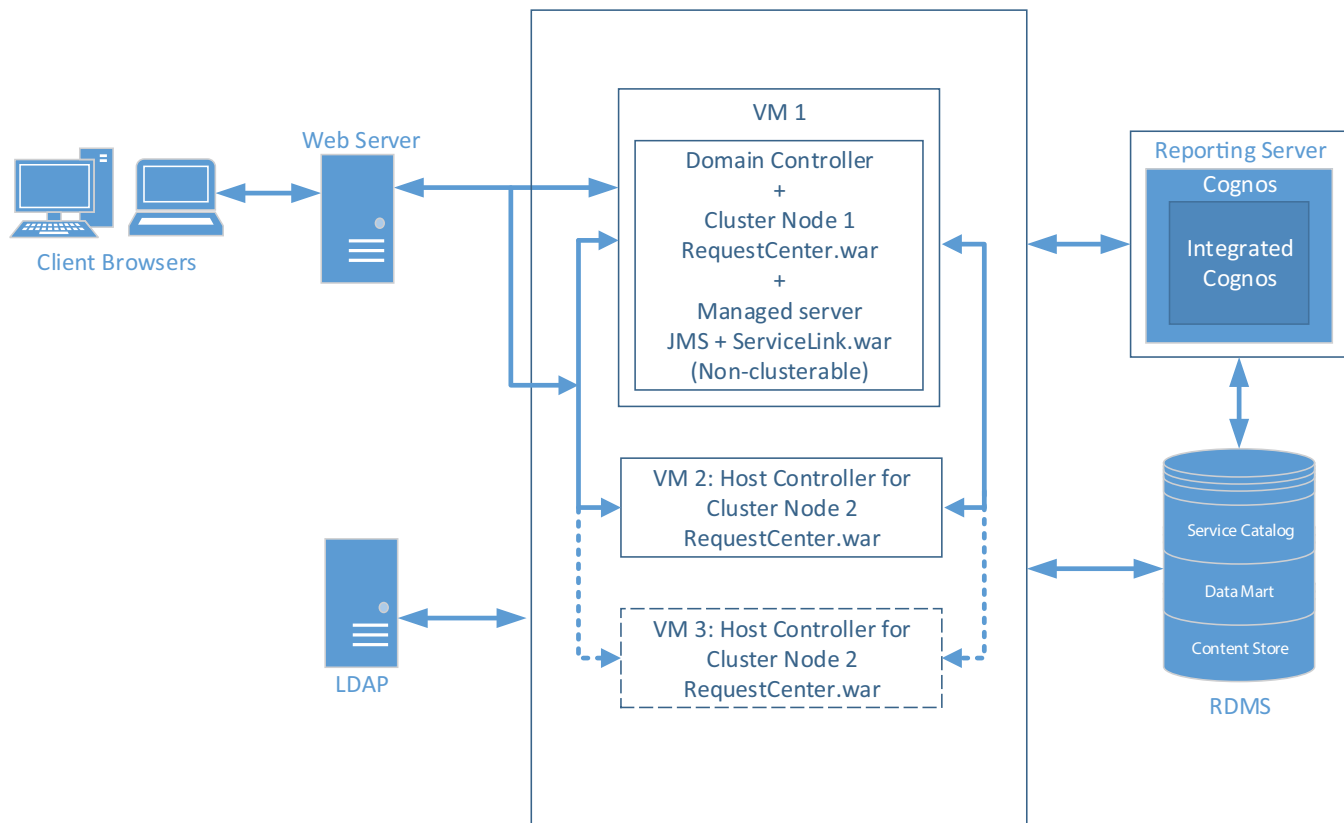
The user can start with 2 nodes, and add more nodes (i.e. more hosts) to the cluster as desired.



Note

The Prime Service Catalog Installer will support up to 6th node for the cluster. If the user wants to add a 7th node or more, see section [Adding Subsequent Host Nodes Manually in JBoss Cluster](#).

Figure 1-1 All Components topology



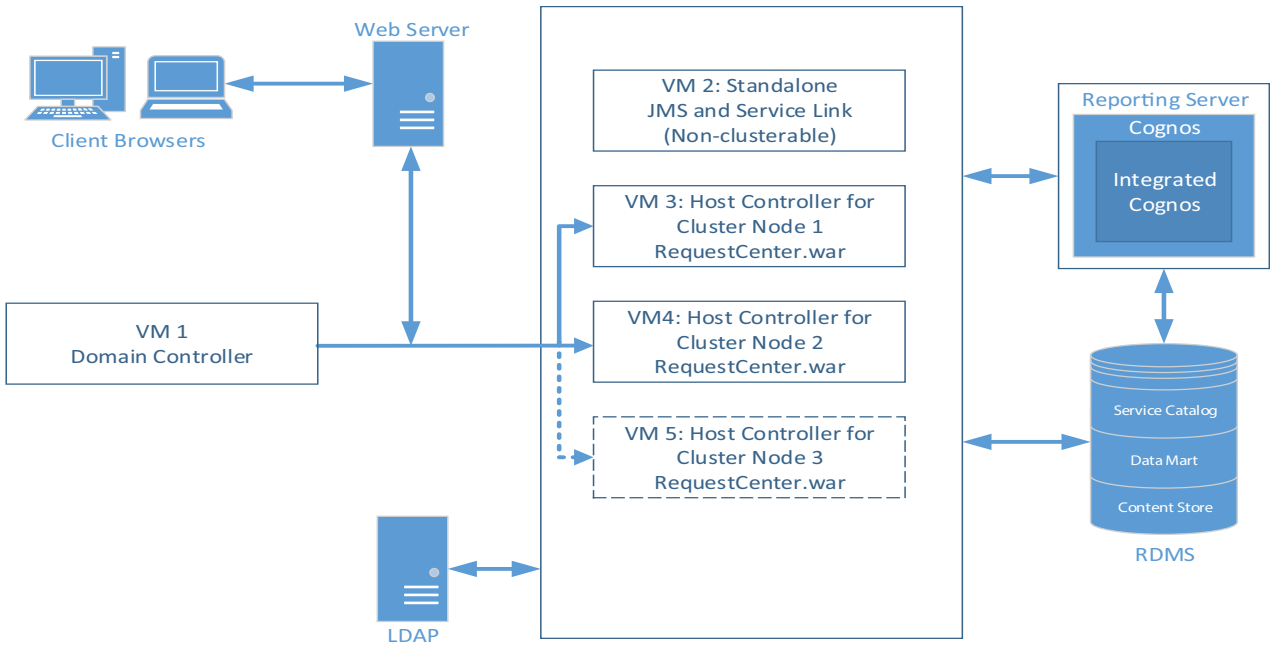
406036

Separate Component Topology

The following diagram shows an example of a Separate Component topology that has an application server cluster with two nodes containing the Service Catalog component application, one with domain controller and another node with Service Link component application.

- VM 1 will have only the Domain Controller.
- VM 2 will have the Service Link and JMS server.
- VM 3 will be the Host 1 for Service Catalog.
- VM 4 will be the Host 2 for Service Catalog.

Figure 1-2 Separate Component Topology



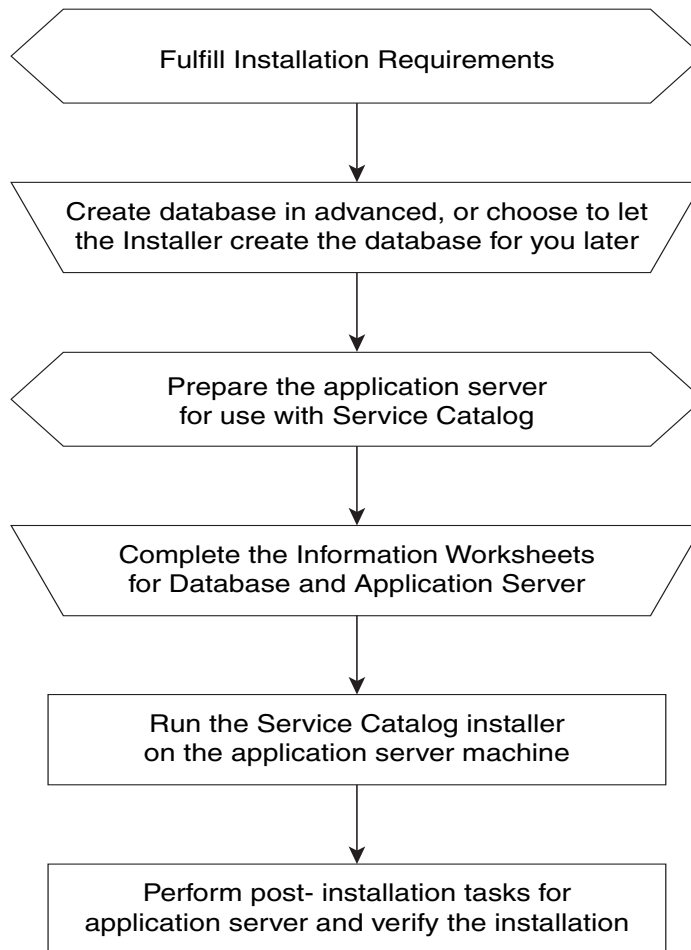
406035

Next chapter describes the software and hardware requirements for a typical deployment topology.

High-level Installation Flow

The following flowchart provides a high level flow of Prime Service Catalog installation.

Figure 1-3 Common Installation Steps



364203

High-level Installation Overview

This section provides a road map of the installation process for Prime Service Catalog:

-
- Step 1** Follow the instructions provided in [Installation Requirements](#) to ensure that you have adequately addressed the minimum hardware and software requirements, and installed the prerequisite software.
 - Step 2** Create the Service Catalog database, as described in [Configuring the Service Catalog Database](#) and complete the [Database Information Worksheet](#). You will need this information when running the Prime Service Catalog installation wizard.
 - Step 3** Prepare the application server for use with Prime Service Catalog, by performing the tasks described in section [Preinstallation Tasks for JBoss EAP](#).

Complete the respective Application Server Information Worksheet as described in the [Worksheets](#) section. You will need this information when running the Prime Service Catalog installation wizard.
 - Step 4** Run the Prime Service Catalog installer on the application server machine, as described in the [Installing Prime Service Catalog on JBoss EAP Application Server](#).
 - Step 5** Perform the post installation tasks for your application server and verify your installation as described in section [Postinstallation Tasks for JBoss EAP](#).
 - Step 6** To enable the Reporting features, you also need to install the Reporting software module and the Cognos software, and configure the Cognos Server to integrate with the Prime Service Catalog application. When you are ready to do this, follow the instructions in [Installing and Upgrading Reporting Module](#).
-

