



# Setting Up WebLogic Application Server

If you choose WebLogic as your application server, you need to install the Oracle WebLogic Application Server software as a prerequisite on your machine. This guide does not contain instructions for installing the WebLogic software. However you will need to follow the instructions in the Preinstallation Configuration for WebLogic to prepare your WebLogic Server for use with Service Catalog. Then after you execute the Cisco Prime Service Catalog installer, come back to the Postinstallation Configuration for WebLogic section of this chapter to complete the rest of the configuration steps.

## Preinstallation Configuration for WebLogic

This section contains instructions for configuring the Oracle WebLogic Application Server, prior to installing Prime Service Catalog.

This release of Prime Service Catalog supports the WebLogic Application Server on the following Operating Systems and Java Development Kit:

**Table 5-1** Supported Operating Systems and Java

Oracle WebLogic Application Server	Operating System	Java
Version 11g (10.3.6)	Red Hat Enterprise Linux Server 7.1	Oracle JDK 7 Update 79 (or higher update)
Version 11g (10.3.6)	Windows Server 2012 R2	Oracle JDK 7 Update 79 (or higher update)



**Note**

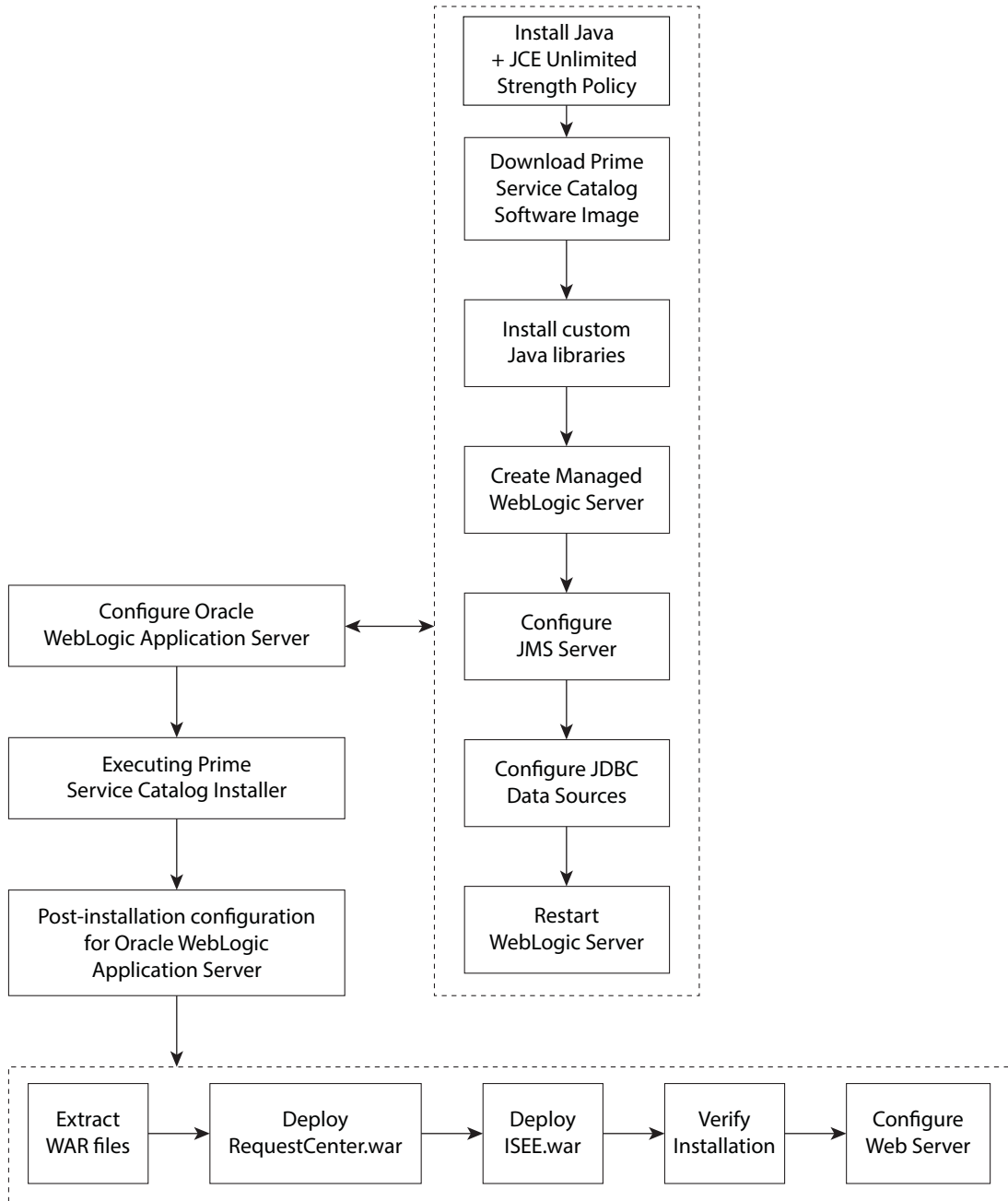
Oracle JRockit is not supported. Oracle Java SE 8 (i.e. Java version 1.8.0\_x) is not supported. Red Hat OpenJDK is not supported for WebLogic.

It is assumed that you have already installed WebLogic Server 11g (10.3.6) software on one of the supported Operating Systems. You will follow instructions in this section to create and configure a new managed WebLogic Server, exclusively for the Cisco Prime Service Catalog application.

# WebLogic Installation Flow

The following figure illustrates steps to install Prime Service Catalog on Oracle WebLogic Application Server.

**Figure 5-1** Installation Flow for Oracle WebLogic Application Server



364205

## Installing Java

Although the WebLogic software installation is bundled with some version of JRockit or Oracle Java, you will not use any bundled JRockit or Java. Instead, you need to download and install Oracle JDK 7. In the next section, you will configure your WebLogic Server to use this version of Oracle JDK 7. This section needs to be done regardless of whether you install WebLogic Server on Windows operating system or Linux operating system.

- 
- Step 1** Access the Oracle JDK 7 download web site to download Oracle JDK 7.
- Step 2** Download the correct version of Oracle JDK 7 for your OS platform. See [Table 5-1](#) for the supported Update version of JDK 7.
- Step 3** Install Oracle JDK 7 on the same machine where WebLogic software is installed.
- Step 4** After Oracle JDK 7 is installed, navigate to the `<WL_HOME>\common\bin` directory.
- Step 5** Modify the following file:
- (For Windows) Modify **commEnv.cmd** as follows:
- set JAVA\_HOME="*<the installation directory for Oracle JDK 7>*"
  - set JAVA\_VENDOR=Sun
- (For Linux) Modify **commEnv.sh** as follows:
- JAVA\_HOME="*<the installation directory for Oracle JDK 7>*"
  - JAVA\_VENDOR=Sun
- Step 6** Copy the unlimited strength JCE policy files to the `$JAVA_HOME/jre/lib/security` directory, overwriting the existing files. The unlimited strength policy files are "local\_policy.jar" and "US\_export\_policy.jar", which can be downloaded from the following link:
- <http://www.oracle.com/technetwork/java/javase/downloads/jce-7-download-432124.html>
- Step 7** Restart all WebLogic servers, including the WebLogic Administration Server and Node Manager.



---

**Note** If you have a WebLogic Cluster environment, perform Steps 3–6 on every node in the Cluster.

---

## Downloading Prime Service Catalog Software

You must first download the Prime Service Catalog software prior to proceeding to the Installing Custom Java Libraries step. For details about the software image download, see [Downloading Prime Service Catalog Software Image](#).

## Installing Custom Java Libraries

In this section, you will copy several Java library files from the `<ServiceCatalog_Software_Dir>` to the `<WL_HOME>` directory, and add these jar files to the class paths. Afterward, you need to restart the WebLogic servers in order to pick up the new Java libraries.

- Step 1** Under the “<WL\_HOME>” directory, create a subdirectory called “**cisco**”. And under "cisco", create two sub-directories called "endorsed" and "lib".
- Step 2** Copy the following jar files from the “<ServiceCatalog\_Software\_Dir>\preinstall\weblogic\jre\_lib\_endorsed” directory to the “<WL\_HOME>\cisco\endorsed” directory:
- serializer.jar
  - xalan.jar
  - xercesImpl.jar
  - xml-apis.jar
- Step 3** Copy the following jar files from the "<ServiceCatalog\_Software\_Dir>\preinstall\weblogic\cisco\_lib" directory to the "<WL\_HOME>\cisco\lib" directory:
- commons-lang-2.4.jar
  - geronimo-ccpp\_1.0\_spec-1.0-beta.jar
  - sqljdbc4.jar
  - slf4j-api-1.6.1.jar
  - pluto-container-api-2.0.2.jar
  - pluto-container-driver-api-2.0.2.jar
  - pluto-taglib-2.0.2.jar
  - portlet-api\_2.0\_spec-1.0.jar
  - ojdbc7.jar
- Step 4** Navigate to the “<WL\_HOME>\common\bin” directory and modify the following file:  
(For Windows) Modify **commEnv.cmd** as follows:
- a. Search for the line that contains the parameter “set WEBLOGIC\_CLASSPATH=”.
  - b. (If your database is SQL Server) Add the value  
%WL\_HOME%\cisco\lib\slf4j-api-1.6.1.jar;%WL\_HOME%\cisco\lib\commons-lang-2.4.jar;%WL\_HOME%\cisco\lib\sqljdbc4.jar; to the beginning of the existing value. Do not forget to include the semicolon characters.

For example, after you modify the WEBLOGIC\_CLASSPATH, it may look like this:

```
set
WEBLOGIC_CLASSPATH=%WL_HOME%\cisco\lib\slf4j-api-1.6.1.jar;%WL_HOME%\cisco\lib\commons-lang-2.4.jar;%WL_HOME%\cisco\lib\sqljdbc4.jar;%PATCH_CLASSPATH%;%JAVA_HOME%\lib\tools.jar;%WL_HOME%\server\lib\weblogic_sp.jar;%WL_HOME%\server\lib\weblogic.jar;%FEATURES_DIR%\weblogic.server.modules_10.3.0.0.jar;%WL_HOME%\server\lib\webservices.jar;%ANT_HOME%\lib\ant-all.jar;%ANT_CONTRIB%\lib\antcontrib.jar
```

- c. (If your database is Oracle) Add the value  
%WL\_HOME%\cisco\lib\slf4j-api-1.6.1.jar;%WL\_HOME%\cisco\lib\commons-lang-2.4.jar;%WL\_HOME%\cisco\lib\ojdbc7.jar; to the beginning of the existing value. Do not forget to include the semicolon characters.

For example, after you modify the WEBLOGIC\_CLASSPATH, it may look like this:

```
set
WEBLOGIC_CLASSPATH=C:\Oracle\Middleware\wlserver_10.3\cisco\lib\slf4j-api-1.1.1.jar;C:\Oracle\Middleware\wlserver_10.3\cisco\lib\commons-lang-2.4.jar;C:\Oracle\Middleware\wlserver_10.3\cisco\lib\ojdbc7.jar;%JAVA_HOME%\lib\tools.jar;%WL_HOME%\server\lib\weblogic_sp.jar;%WL_HOME%\server\lib\weblogic.jar;%FEATURES_DIR%\weblogic.server.modules_10
```

```
.3.6.0.jar;%WL_HOME%\server\lib\webservices.jar;%ANT_HOME%\lib\ant-all.jar;%ANT_CONTRIB%  
B%\lib\antcontrib.jar
```

(For Linux) Modify **commEnv.sh** as follows:

- a. Search for the line that contains the parameter “WEBLOGIC\_CLASSPATH=”.
- b. (If your database is SQL Server) Add the value  
`${WL_HOME}/cisco/lib/slf4j-api-1.6.1.jar${CLASSPATHSEP}${WL_HOME}/cisco/lib/commons-lang-2.4.jar${CLASSPATHSEP}${WL_HOME}/cisco/lib/sqljdbc4.jar${CLASSPATHSEP}` to the beginning of the existing value.

For example, after you modify the WEBLOGIC\_CLASSPATH, it may look like this:

```
WEBLOGIC_CLASSPATH="${WL_HOME}/cisco/lib/slf4j-api-1.6.1.jar${CLASSPATHSEP}${WL_HOME}/  
cisco/lib/commons-lang-2.4.jar${CLASSPATHSEP}${WL_HOME}/cisco/lib/sqljdbc4.jar${CLASSP  
ATHSEP}${PATCH_CLASSPATH}${CLASSPATHSEP}${JAVA_HOME}/lib/tools.jar${CLASSPATHSEP}${WL_  
HOME}/server/lib/weblogic_sp.jar${CLASSPATHSEP}${WL_HOME}/server/lib/weblogic.jar${CLA  
SSPATHSEP}${FEATURES_DIR}/weblogic.server.modules_10.3.0.0.jar${CLASSPATHSEP}${WL_HOME  
}/server/lib/webservices.jar${CLASSPATHSEP}${ANT_HOME}/lib/ant-all.jar${CLASSPATHSEP}${  
ANT_CONTRIB}/lib/antcontrib.jar"
```

- c. (If your database is Oracle) Add the value  
`${WL_HOME}/cisco/lib/slf4j-api-1.6.1.jar${CLASSPATHSEP}${WL_HOME}/cisco/lib/commons-lang-2.4.jar${CLASSPATHSEP}${WL_HOME}/cisco/lib/ojdbc7.jar${CLASSPATHSEP}` to the beginning of the existing value

For example, after you modify the WEBLOGIC\_CLASSPATH, it may look like this:

```
WEBLOGIC_CLASSPATH="${WL_HOME}/cisco/lib/slf4j-api-1.6.1.jar${CLASSPATHSEP}${WL_HOME}/  
cisco/lib/commons-lang-2.4.jar${CLASSPATHSEP}${WL_HOME}/cisco/lib/ojdbc7.jar${CLASSPAT  
HSEP}${PATCH_CLASSPATH}${CLASSPATHSEP}${JAVA_HOME}/lib/tools.jar${CLASSPATHSEP}${WL_HO  
ME}/server/lib/weblogic_sp.jar${CLASSPATHSEP}${WL_HOME}/server/lib/weblogic.jar${CLASS  
PATHSEP}${FEATURES_DIR}/weblogic.server.modules_10.3.0.0.jar${CLASSPATHSEP}${WL_HOME}/  
server/lib/webservices.jar${CLASSPATHSEP}${ANT_HOME}/lib/ant-all.jar${CLASSPATHSEP}${A  
NT_CONTRIB}/lib/antcontrib.jar"
```

**Step 5** Restart the WebLogic Administration Server and WebLogic Node Manager. You must restart all WebLogic servers for them to pick up the custom Java libraries that you just installed.



**Note** If you have a WebLogic Cluster environment, perform Steps 1–5 on every node in the Cluster.



**Note** If you are upgrading from a previous release of Prime Service Catalog to this release, you must still repeat steps 1 to 5 in this section on your WebLogic environment. This is because:

- a) You have to overwrite the older version of the Cisco jar files with the newer version shipped with this release of Prime Service Catalog.
- b) There are new version of JDBC drivers (sqljdbc4.jar and ojdbc7.jar) that are bundled with this release of Prime Service Catalog.

## Creating a Managed WebLogic Server

In this section you will create a new managed WebLogic Server, to be used exclusively for Prime Service Catalog.

- Step 1** Log on to the WebLogic Administration Console.
- Step 2** If your WebLogic was installed in PRODUCTION mode, click **Lock & Edit** so that you can proceed to make changes. Otherwise, you can skip this step.
- Step 3** Choose **Environment > Servers**.
- Step 4** Click **New**. The “Create a New Server” panel appears.

**Figure 5-2** Create New WebLogic Server

**Create a New Server**

Back Next Finish Cancel

**Server Properties**

The following properties will be used to identify your new server.  
\* Indicates required fields

What would you like to name your new server?

\* **Server Name:**

Where will this server listen for incoming connections?

**Server Listen Address:**

\* **Server Listen Port:**

Should this server belong to a cluster?

**No, this is a stand-alone server.**

**Yes, create a new cluster for this server.**

Back Next Finish Cancel

361938

- Step 5** Enter a Server Name (for example, “server1”). Enter a port number different from 7001 (for example, 8001), because port 7001 is most likely already used by the WebLogic Administration Server. Choose the **No, this is a stand-alone server** option.
- Step 6** Click **Finish**. Your newly created WebLogic Server appears on the list.
- Step 7** Click the newly created Server “**server1**” to open its properties.
- Step 8** Choose **Configuration > General**.

Figure 5-3 Configuration – General Settings

Settings for server1

Configuration Protocols Logging Debug Monitoring Control Deployments Services

General Cluster Services Keystores SSL Federation Services Deployment Migration

Save

Use this page to configure general features of this server such as default network communication.

[View JNDI Tree](#)

**Name:** server1

**Machine:** vmw06.oakqas.celosis.com

**Cluster:** (Stand-Alone)

**Listen Address:**

Listen Port Enabled

**Listen Port:**

SSL Listen Port Enabled

361339

- Step 9** In the Machine drop-down list, select a machine (i.e. Node Manager machine) where the WebLogic server will run, and click **Save**.
- Step 10** Choose **Configuration > Keystores**.
- Step 11** Click the **Change** button next to the **Keystores** field. Select **Custom Identity and Java Standard Trust** from the drop-down list. Click **Save**.

## Setting the Arguments for Java Virtual Machine

Perform the following steps to set the arguments for Java Virtual Machine:

- Step 1** Choose **Configuration > Server Start**.
- Step 2** Enter values for the following parameters:
- **Arguments** = `-server -Xms2048m -Xmx2048m -XX:PermSize=512m -XX:MaxPermSize=512m -XX:NewRatio=2 -XX:ReservedCodeCacheSize=256m -XX:+TieredCompilation -XX:+HeapDumpOnOutOfMemoryError -XX:HeapDumpPath=<WL_HOME>/cisco -Dweblogic.ext.dirs=<WL_HOME>/cisco/lib -Djava.endorsed.dirs=<WL_HOME>/cisco/endorsed -XX:CompileCommand=exclude,com/newscale/bfw/signon/filters/AuthenticationFilter,doFilter -XX:CompileCommand=exclude,org/apache/xml/dtm/ref/sax2dtm/SAX2DTM,startElement -XX:CompileCommand=exclude,org/exolab/castor/xml/Marshaller,marshal -XX:CompileCommand=exclude,org/apache/xpath/compiler/XPathParser,UnionExpr -XX:CompileCommand=exclude,org/apache/oro/text/regex/Perl5Compiler,__parseAtom`  
(where `<WL_HOME>/cisco/lib` and `<WL_HOME>/cisco/endorsed` are the directories described in the [Installing Custom Java Libraries](#)).
  - **User Name** = `weblogic`
  - **Password** = `<the password for the “weblogic” username>`
  - **Confirm Password** = `<re-enter the password for the “weblogic” username>`
- Step 3** Click **Save**.
- Step 4** If your WebLogic was installed in **PRODUCTION** mode, click **Activate Changes**. Otherwise, you can skip this step.
- Step 5** Open the **Control** tab.

**Figure 5-4 Start WebLogic Server**

Servers(Filtered - More Columns Exist)

<input type="checkbox"/>	Server ↕	Machine	State	Status of Last Action
<input type="checkbox"/>	AdminServer(admin)		RUNNING	None
<input checked="" type="checkbox"/>	server1	vmwsw06.oakqas.celosis.com	RUNNING	TASK COMPLETED

Showing 1 to 2 of 2 Previous | Next

361940

- Step 6** Choose the WebLogic Server named “**server1**”, then click **Start**. Wait until you see State=RUNNING.



Your new WebLogic Server has now been configured to use Oracle JDK 7 and the Cisco Java libraries that you installed in this section.

## WebLogic Cluster Configuration

The Prime Service Catalog product is comprised of two component applications named “Service Catalog” and “Service Link”. However, the Prime Service Catalog installer does not automatically deploy the Service Catalog and Service Link applications on your WebLogic Server for you. The installer will generate two WAR files (RequestCenter.war for the Service Catalog component application, and ISEE.war for the Service Link component application) which are customized for your WebLogic environment. After you execute the Prime Service Catalog installer, you will need to follow the instructions in a later section of this chapter to manually deploy RequestCenter.war and ISEE.war on your WebLogic Server.

The RequestCenter.war file and ISEE.war file can be deployed together in the same WebLogic Server even though they are two separate component applications. However, if you are setting up a WebLogic Cluster environment with multiple nodes (where each node is a separate computer), you need to perform the additional configurations as follows:

- 
- Step 1** Perform the tasks described in the [Installing Java](#) and [Installing Custom Java Libraries](#) on each node (that is, each computer) in the Cluster.
  - Step 2** Follow the instructions in the [Creating a Managed WebLogic Server](#) to create the WebLogic Server for each node and to set the JVM arguments for each server, before you add these servers to the Cluster.
  - Step 3** Each WebLogic Server in your Cluster must be configured to use the same port number. For example, your Cluster contains two nodes. If the WebLogic Server on Host 1 is running on port 8001, then the WebLogic Server on Host 2 must also be configured to run on port 8001.
  - Step 4** RequestCenter.war file is deployed on the WebLogic Cluster. But, the ISEE.war file cannot be deployed in the same Cluster; it must be deployed on a stand-alone WebLogic Server that is not a member of any Cluster. Therefore, if you have a clustered WebLogic environment, then you must create an additional stand-alone WebLogic Server (that is, not a member of the Cluster), to be used for ISEE.war. For the rest of the chapter, this stand-alone WebLogic Server is referred to as the “Service Link WebLogic Server”. For this stand-alone “Service Link WebLogic Server”, the JVM arguments can be set as follows:

```
Arguments = -server -Xms2048m -Xmx2048m -XX:PermSize=512m -XX:MaxPermSize=512m
-XX:NewRatio=2 -XX:ReservedCodeCacheSize=256m -XX:+TieredCompilation
-XX:+HeapDumpOnOutOfMemoryError -XX:HeapDumpPath=<WL_HOME>/cisco
-Dweblogic.ext.dirs=<WL_HOME>/cisco/lib
-Djava.endorsed.dirs=<WL_HOME>/cisco/endorsed
```

(where <WL\_HOME>/cisco/lib and <WL\_HOME>/cisco/endorsed are the directories described in the [Installing Custom Java Libraries](#)).

- Step 5** If the stand-alone “Service Link WebLogic Server” resides on another machine, then make sure that you also performed the tasks described in the [Installing Java](#) and [Installing Custom Java Libraries](#) on that WebLogic machine. If the stand-alone “Service Link WebLogic Server” resides on the same machine as one of the Cluster nodes, then make sure that it is configured with a port number that is different from the port number used by the Cluster.
-

## Configuring JMS Server

In this section, you will configure a JMS Server and JMS Queues that will be used by Prime Service Catalog.



### Note

If RequestCenter.war and ISEE.war are deployed together on the same nonclustered WebLogic Server, then the JMS configurations described in this section are performed for that WebLogic Server. However, if you have a WebLogic Cluster environment, then the JMS configurations are performed for the “Service Link WebLogic Server”.

## Creating a Persistent Store

Perform the following steps to create a persistent store:

- 
- Step 1** On your computer, cd to `<WL_HOME>`.
  - Step 2** Create a subdirectory called **CiscoFileStore**.
  - Step 3** Log on to the WebLogic Administration Console.
  - Step 4** If your WebLogic was installed in PRODUCTION mode, click **Lock & Edit**. Otherwise, you can skip this step.
  - Step 5** Choose **Services > Persistent Stores**.
  - Step 6** Choose **New > Create FileStore**. The “Create a New File Store” panel appears.
  - Step 7** In the Name field, enter **CiscoFileStore**.
  - Step 8** In the Target drop-down list, choose your WebLogic Server.
  - Step 9** In the Directory text box, enter the full path of the CiscoFileStore directory you created in Step 2 above (for example, `/opt/Oracle/Middleware/wlserver_10.3/CiscoFileStore`).
  - Step 10** Click **OK**.
- 

## Creating a JMS Server

Perform the following steps to create JMS server:

- 
- Step 1** On the WebLogic Administration Console, choose **Services > Messaging > JMS Modules**.
  - Step 2** Click **New**. The “Create a New JMS Server” panel appears.
  - Step 3** In the Name field, enter **CiscoJMSServer**.
  - Step 4** In the Persistent Store drop-down list, choose the Persistent Store named **CiscoFileStore**.
  - Step 5** Click **Next**.
  - Step 6** In the Target drop-down list, choose your WebLogic Server. (If you have a WebLogic Cluster environment, click **Service Link WebLogic Server**.)
  - Step 7** Click **Finish**.
-

## Creating a JMS Module

Perform the following steps to create a JMS module:

- 
- Step 1** On the WebLogic Administration Console, choose **Services > Messaging > JMS Modules**.
  - Step 2** Click **New**. The Create JMS System Module panel appears.
  - Step 3** In the Name field, enter **CiscoJMSModule**. and click **Next**.
  - Step 4** Choose your WebLogic Server as the target. (If you have a WebLogic Cluster environment, choose **Service Link WebLogic Server**.) and click **Next**.
  - Step 5** Click **Finish**.
  - Step 6** Click the newly created JMS Module named **CiscoJMSModule** to open its properties.
  - Step 7** Open the **Subdeployments** tab and click **New**.
  - Step 8** In the Subdeployment Name field, enter **CiscoSubdeployment** and click **Next**.
  - Step 9** Choose the JMS Server named **CiscoJMSServer**. and click **Finish**.
- 

## Creating Connection Factory

Perform the following steps to create a connection factory:

- 
- Step 1** On the WebLogic Administration Console, choose **Services > Messaging > JMS Modules**.
  - Step 2** Click the JMS Module named **CiscoJMSModule** to open its properties.
  - Step 3** Open the **Configuration** tab and click **New**.
  - Step 4** Choose the **Connection Factory** option and click **Next**.
  - Step 5** In the Name and JNDI Name fields, enter **NSConnectionFactory** and click **Next**.
  - Step 6** Click **Advanced Targeting**.
  - Step 7** In the Subdeployments drop-down list, choose **CiscoSubdeployment**. The screen is refreshed to show that the JMS Server named “CiscoJMSServer” is already selected.
  - Step 8** Click **Finish**.
- 

## Creating JMS Templates

Perform the following steps to create JMS templates:

- 
- Step 1** On the WebLogic Administration Console, choose **Services > Messaging > JMS Modules**.
  - Step 2** Click the JMS Module named **CiscoJMSModule** to open its properties.
  - Step 3** Open the **Configuration** tab and click **New**.
  - Step 4** Choose the **JMS Template** option and click **Next**.

**Step 5** In the Name field, enter **CiscoQueueTemplate** and click **OK**.

---

## Creating Queues

Perform the following steps to create queues:

- 
- Step 1** On the WebLogic Administration Console, choose **Services > Messaging > JMS Modules**.
- Step 2** Click the JMS Module named **CiscoJMSModule** to open its properties.
- Step 3** Open the **Configuration** tab and click **New**.
- Step 4** Choose the **Queue** option.
- Step 5** Click **Next**.
- Step 6** In the Name and JNDI Name fields, enter **ISEEInboundQueue**.
- Step 7** In the Template drop-down list, choose the **CiscoQueueTemplate** that you created and click **Next**.
- Step 8** In the Subdeployments drop-down list, choose **CiscoSubdeployment**. The screen is refreshed to show that the JMS Server named “CiscoJMSServer” is already selected.
- Step 9** Click **Finish**.
- Step 10** Repeat the above steps four more times to create four more JMS Queues with the following names:

Name & JNDI Name	Template	Subdeployments
ISEEOutboundQueue	CiscoQueueTemplate	CiscoSubdeployment
BEEERequisitionsQueue	CiscoQueueTemplate	CiscoSubdeployment
BEEEAuthorizationsQueue	CiscoQueueTemplate	CiscoSubdeployment
BEEEInboundQueue	CiscoQueueTemplate	CiscoSubdeployment

**Step 11** If your WebLogic was installed in PRODUCTION mode, click **Activate Changes**. Otherwise, you can skip this step.

---

## Configuring JDBC Data Sources

In this section, you will configure a JDBC Data Source to point to the ServiceCatalog database that you created in the [Configuring the Service Catalog Database](#).

Use the worksheet that you filled out at the end of the [Configuring the Service Catalog Database](#) to retrieve the necessary database information.

- 
- Step 1** Log on to the WebLogic Administration Console.
- Step 2** If your WebLogic was installed in PRODUCTION mode, click **Lock & Edit**. Otherwise, you can skip this step.
- Step 3** Choose **Services > Data Sources**.
- Step 4** Choose **New > Generic Data Source**.

Update the information for this panel as provided in [Table 5-2](#) and click **Next**.

**Table 5-2**

Field	Value
Name	<b>REQUESTCENTERDS</b>
JNDI Name field	<b>eis/REQUESTCENTERDS</b>
Database Type drop-down list	<ul style="list-style-type: none"> <li>(For SQL Server), choose <b>MS SQL Server</b></li> <li>(For Oracle), choose <b>Oracle</b></li> </ul>

**Step 5** On the next panel, select one of the following values from the Database Driver drop-down list, then click **Next**:

- Select "Microsoft's MS SQL Server Driver (Type 4) Version:2005 and later" if your database is MS SQL Server.
- Select "Oracle's Driver (Thin) for Instance connections; Version:9.0.1 and later" if your database is Oracle, using SID to connect.
- Select "Oracle's Driver (Thin) for Service connections; Version:9.0.1 and later" if your database is Oracle, using Service Name to connect.

**Step 6** On the next panel, select the "Support Global Transactions" option and the "One-Phase Commit" option, then click **Next**.

**Step 7** Update the information for this panel as provided in [Table 5-3](#) and click **Next**.

**Table 5-3**

Field	Definition
Database Name	<ul style="list-style-type: none"> <li>(For SQL Server), enter the name of the database, for example, "ServiceCatalog".</li> <li>(For Oracle), enter the SID if you are using SID to connect to your Oracle database, or the Service Name if you are using Service Name to connect to your Oracle database.</li> </ul>
Host Name	Enter the database server name or IP address
Port	Enter the database port number
Database User Name	Enter the name of the db_owner (or schema user) of the ServiceCatalog database (for example, enter <b>CPSCUser</b> ).
Password	Enter the password for the Database User Name
Confirm Password	Re-enter the password for the Database User Name

**Step 8** Update the information for this panel as provided in [Table 5-4](#) and click **Next**.

**Caution**

Do not click the Test Configuration button.

**Table 5-4**

Field	Definition
Driver Class Name	Enter the value (one string) For SQL Server: “com.microsoft.sqlserver.jdbc.SQLServerDriver” For Oracle: “oracle.jdbc.OracleDriver”
URL	Enter the following value (one string): <b>For SQL Server:</b> jdbc:sqlserver://<db_server>:<db_port>;databaseName=<db_name> (For example, jdbc:sqlserver://mysqlserver.cisco.com:1433;databaseName=ServiceCa talog) <b>For Oracle SID:</b> jdbc:oracle:thin:@<db_server>:<db_port>:<SID> (For example, jdbc:oracle:thin:@myoracle.cisco.com:1521:PROD) <b>For Oracle Service Name:</b> jdbc:oracle:thin:@//<db_server>:<db_port>/<service_name> (For example, jdbc:oracle:thin:@//myoracle.cisco.com:1521/PRODSN)
Database User Name	Enter the name of the db_owner (or schema user) of the ServiceCatalog database (for example, enter CPSCUser).
Password	Enter the password for the Database User Name.
Confirm Password	Re-enter the password for the Database User Name.
Properties	For SQL Server, enter the following lines: userName=<Database User Name> selectMethod=direct  For Oracle, enter the following line: user=<Database User Name>
Test Table Name	For SQL Server, enter the following value: SQL SELECT 1  For Oracle, enter the following value: SQL SELECT 1 FROM DUAL

**Step 9** Choose your WebLogic Server as the Target.

**Note**

If you have a WebLogic Cluster environment, then choose both the Cluster name and the “**Service Link WebLogic Server**” as the Targets for this data source.

**Step 10** Click **Finish**.

The newly created data source named “REQUESTCENTERDS” should appear on the Summary of JDBC Data Sources panel. Verify that the JNDI Name and Target information for this data source is correct.

**Step 11** Click REQUESTCENTERDS to open its properties.

**Step 12** Choose **Configuration > Connection Pool**.

**Step 13** Change the values for the following parameters on the screen:

- **Initial Capacity = 20**
- Maximum Capacity = 80
- Minimum Capacity = 20

**Step 14** Click **Save**.

**Step 15** In Connection Pool tab, at the bottom of the panel, choose **Advanced**.

**Figure 5-5 Connection Pool – Advanced Settings**

Test Connections On Reserve  
 Test Frequency:   
 Test Table Name:  
  
 Seconds to Trust an Idle Pool Connection:

**Step 16** Click the **Test Connections On Reserve** option.

**Step 17** In the Test Table Name field, enter the following value, then click **Save**:

**For SQL Server:**

**SQL SELECT 1**

**For Oracle:**

**SQL SELECT 1 FROM DUAL**

**Step 18** If your WebLogic was installed in PRODUCTION mode, click **Activate Changes**. Otherwise, you can skip this step.

## Restarting WebLogic Server

You must restart your WebLogic Server in order for it to pick up the new JMS and Data Sources configurations.

**Step 1** Restart your WebLogic Server.

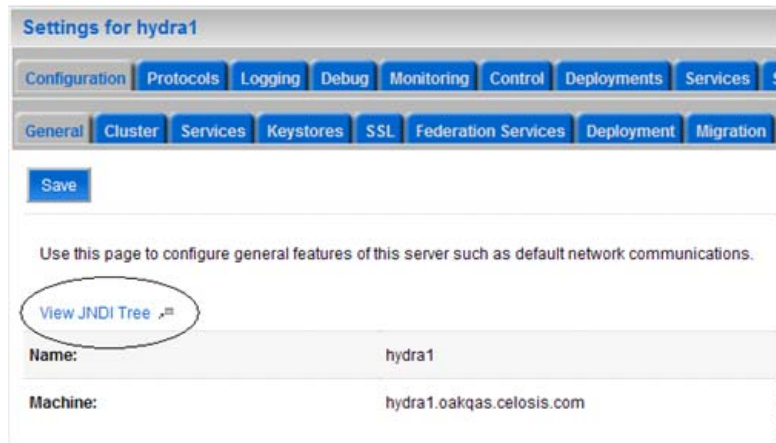


**Note**

If you have WebLogic Cluster environment, restart all the WebLogic servers in the Cluster as well as the “Service Link WebLogic Server”.

**Step 2** Once the WebLogic Server is started successfully, navigate to its **Configuration > General** tab.

**Figure 5-6 JNDI Tree**



**Step 3** Click the link called **View JNDI Tree** right above the Name field. The JNDI Viewer window appears.

**Step 4** In the JNDI Tree Structure on the left hand side, look for the following entries:

```
eis> REQUESTCENTERDS
BEEEAuthorizationsQueue
BEEEinboundQueue
BEEERequisitionsQueue
ISEEinboundQueue
ISEEOutboundQueue
NSConnectionFactory
```

**Step 5** If you have a clustered WebLogic environment, then the JNDI Tree for your WebLogic Cluster should contain only the following entry:

```
eis> REQUESTCENTERDS
```

And the JNDI Tree for the “Service Link WebLogic Server” should contain the following entries:



```
eis> REQUESTCENTERDS
BEEEAAuthorizationsQueue
BEEEIInboundQueue
BEEERequisitionsQueue
ISEEIInboundQueue
ISEEOOutboundQueue
NSConnectionFactory
```

---

Complete the [WebLogic Application Server Information Worksheet](#), by entering your configuration values in the **Value** column. The information in that worksheet will be needed when you run the Prime Service Catalog Installation Wizard.

## Installing Prime Service Catalog on WebLogic Application Server

Prime Service Catalog provides two types of WebLogic installation —Typical and Custom. The Typical installation performs a streamlined installation using default settings. It requires a smaller footprint as the three foundational application components—Service Catalog application, Service Link application, and JMS service—are hosted on the same application server. Typical installation is commonly used when setting up a sandbox environment. The Custom installation allows you to configure a different deployment topology and to apply custom changes to the application. Use the Custom Installation mode if you have any of the following requirements:

- Have Service Catalog application, Service Link application, JMS service running on separate application servers
- Have a clustered Service Catalog topology (for WebLogic)
- Have separate tablespaces for definitional data, transactional data and indexes (for Oracle Only)
- Add custom content to the RequestCenter.war
- Recreate the RequestCenter.war or ISEE.war files without executing any database scripts

After your WebLogic environment is prepared, you can proceed to perform Typical or Custom installations for WebLogic.

After you finish executing the Prime Service Catalog installer successfully, follow the instructions in the next section [Postinstallation Configuration for WebLogic](#) to complete the rest of the configuration steps.

### Performing a Typical Installation

In this scenario, a new database schema is created for a new Prime Service Catalog installation. A “Typical” installation type is chosen in the installation wizard when you want to perform a streamlined installation using default settings.

## Before You Begin

- Extract the electronic software distribution file that you downloaded from the Cisco web site to your computer, if you have not already done so.
- Add the `%JAVA_HOME%\bin` (or `$JAVA_HOME/bin` if you are on Linux) to the beginning of the `PATH` environment variable on your machine, where `%JAVA_HOME%` points to the correct JDK directory.

## Procedure

**Step 1** On Windows Operating System, log in as a user with administrator rights, and double-click `setup.cmd` to launch the GUI installation wizard.

On Linux Operating System, log in as the "root" user, and execute `./setup.sh` from a graphical interface, such as X-window, to launch the GUI installation wizard.

**Step 2** When the Introduction panel appears, click **Next** to begin.

**Step 3** In the **Choose Install Folder** panel, enter a directory path (or click the Choose button to select a directory) as the destination folder for Service Catalog, and click **Next**.

- On Windows, the default value for destination folder is `C:\CiscoPrimeServiceCatalog`.
- On Linux, the default value is `/opt/CiscoPrimeServiceCatalog`. The value for destination directory must not contain any space character.



**Note** Do not enter the installation folder of your WebLogic root directory. We recommend that you create the destination folder outside of your application server directory.

Throughout this document, this destination folder is referred to as `<ServiceCatalog_Install_Dir>`.

For WebLogic, this directory is where the Service Catalog installer creates the WAR files for the Service Catalog application.

**Step 4** On the Application Server Selection panel, select the application server as WebLogic and click **Next**. Refer to the Application Server Information Worksheet that you filled out in Appendix A.

**Step 5** On the Installation Type panel, select **Typical** radio button and click **Next**.

**Step 6** On the Database Selection panel, select a database platform (Microsoft SQL Server or Oracle) and click **Next**. The subsequent panels may look different depending on which database platform you select at this point. Refer to the [Database Information Worksheet](#) that you filled out in Appendix A to determine your database platform.

**Step 7** On the Service Catalog Database Creation panel:

- If you have not created the database in advance, select **Yes**. By selecting **Yes**, you are telling the installer to create the database automatically for you. In the next panel, you will be prompted for the information that the installer will use to create the database user and database schema for Service Catalog. Refer to the [Database Information Worksheet](#) for the description of each field on this panel.
- If you have already created your database, then select **No**. In the next panel, you will be prompted for the information of the existing database user and database schema. Refer to the [Database Information Worksheet](#) for the description of each field on this panel. (If you are performing an upgrade installation, you must select No. Refer to Chapter 7: [Upgrading Prime Service Catalog](#) for more detailed information).

**Step 8** On the Service Catalog Database panel, enter the information for the Service Catalog database.

- If you selected **Yes** in the last panel, you will see a "**Create Database**" button on this panel, and the **Next** button is grayed out. Notice that you need to enter the password for either the "sys" user (for Oracle) or the "sa" user (for SQL Server) which the installer will use to connect to your database server. Once you fill out the information on this panel, click the "**Create Database**" button. If you get the message "Service Catalog database created successfully", click **OK** to close the message. The **Next** button is now enabled.
- If you selected **No** in the last panel, you just need to fill out the information for the existing Service Catalog database, and select the "Execute database scripts" check box.

**Note**

The "Create Database" feature creates a very basic Service Catalog database that meets the minimum requirements for the Service Catalog application to operate. This feature is recommended for a Demo or Test system. For a Production system, contact your DBA in advance, to create the Service Catalog database which meets all of the product requirements as described in the Configuring Databases section, as well as any performance, reliability, and security requirements that adhere to your corporate policy.

- Step 9** Click **Next** to continue. The installer connects to the database to validate the required settings for the database. If the installer created the database for you, then it would meet all of the required settings, and the validation test would pass. If you provided the information for an existing database, then the installer may report a validation error if any database setting is missing. See the [Software Requirements](#) for the database requirements. If a database validation error occurs, you can do the following:
- Close the error dialog and click **Cancel** to exit the installation wizard, or
  - Fix the missing database setting on a separate database connection session. Then come back to this screen, close the error dialog, and click **Next** again. At this point, the installer will repeat the validation test, and if the test passes, it will let you move to the next panel.
- Step 10** In the Master Key Password panel, enter the master key password.
- As part of the security requirement, a master key password must be provided that would be used to encrypt all the passwords that are available in the application. The password provided must match the password rules, as described on the panel.
- The master key password is saved in two files, kek\_new.txt and kek\_old.txt, under the <ServiceCatalog\_Install\_Dir>/dist directory. The kek\_new.txt and kek\_old.txt files must be backed up and stored in a safe location. The application server cannot login to the ServiceCatalog database without the master key password files. If you lose these master key password files, please contact Cisco TAC for help.
- Step 11** In the Service Catalog Configuration panel, enter the information for the WebLogic server where Service Catalog application (i.e. RequestCenter.war) will be deployed. Refer to the [WebLogic Application Server Information Worksheet](#) that you have filled out in Appendix A. For more information, see [Service Catalog Configuration for WebLogic](#).
- Step 12** Click **Next** to display the Messaging Configuration panel. Enter the information for the JMS Queue Connection Factory. Refer to the [WebLogic Application Server Information Worksheet](#) that you filled out in Appendix A. For more information, see [Messaging Configuration Table](#).
- Step 13** Click **Next** to display the Messaging Queues Configuration panel. Enter the queue names as how you prepared them for your WebLogic server. Refer to the [WebLogic Application Server Information Worksheet](#) that you filled out in Appendix A.
- Step 14** Click **Next** to display the Service Catalog Administration Configuration panel. Enter details as provided in [Service Catalog Administration Configuration Table](#), and click **Next**.
- Step 15** Click **Install** in the Pre-Installation Summary panel to begin installation.

The installer will display the progress bar. It may take up to 30 minutes for the installer to complete. Do not interrupt or abort the installer during this process.

- Step 16** If the installation process completes successfully, the **Install Complete** panel appears. Click **Done** to exit the installation wizard.

You have completed the execution of the Service Catalog installer. You can now go back to the Post installation Configuration section for the appropriate application server to complete the rest of the configuration steps.

## Performing a Custom Installation

In this scenario, a “Custom” installation type is chosen in the installation wizard to customize aspects of the installation rather than accepting the defaults.

### Before You Begin

- If you are on a Windows Operating System, stop the IIS web server.
- Extract the electronic software distribution file that you downloaded from the Cisco web site to your computer, if you have not already done so.
- Add the `%JAVA_HOME%\bin` (or `$JAVA_HOME/bin` if you are on Linux) to the beginning of the `PATH` environment variable on your machine, where `%JAVA_HOME%` points to the correct JDK directory.

### Procedure

- Step 1** On Windows Operating System, log in as a user with administrator rights, and double-click **setup.cmd** to launch the GUI installation wizard.
- On Linux Operating System, log in as the "root" user, and execute **./setup.sh** from a graphical interface, such as X-window, to launch the GUI installation wizard.
- Step 2** When the Introduction panel appears, click **Next** to begin.
- Step 3** In the Choose Install Folder panel, enter a directory path (or click the Choose button to select a directory) as the destination folder for Service Catalog, and click Next.
- On Windows, the default value for destination folder is **C:\CiscoPrimeServiceCatalog**
  - On Linux, the default value is **/opt/CiscoPrimeServiceCatalog**. The value for destination directory must not contain any space character.



#### Note

Do not enter the installation folder of your WebLogic root directory. We recommend that you create the destination folder outside of your application server directory.

Throughout this document, this destination folder is referred to as `<ServiceCatalog_Install_Dir>`. For WebLogic, this directory is where the Service Catalog installer creates the generated WAR files for the Service Catalog application. For WildFly, this directory is also where the Service Catalog installer installs and configures the WildFly Application Server software.

**Step 4** On the Application Server Selection panel, select one of the Application server radio buttons and click **Next**.

**Step 5** On the Installation Type panel, select **Custom** radio button and click **Next**.

**Step 6** Select a component in the Component Selection panel and click **Next**.

The Custom installation mode for WildFly allows you to install

- only the Service Catalog server,
- only the Service Link server, or
- both Service Catalog and Service Link servers on the same computer.

**Step 7** Choose the database platform (Microsoft SQL Server or Oracle) you want, on the Database Selection panel and click **Next**.

The subsequent panels may look different depending on the database platform you select. Refer to the [Database Information Worksheet](#) to determine your database platform.

**Step 8** On the Service Catalog Database Creation panel:

- If you have not created the database in advance, select **Yes**. By selecting **Yes**, you are telling the installer to create the database automatically for you. In the next panel, you will be prompted for the information that the installer will use to create the database user and database schema for Service Catalog. Refer to the [Database Information Worksheet](#) for the description of each field on this pane.
- If you have already created your database, then select **No**. In the next panel, you will be prompted for the information of the existing database user and database schema. Refer to the [Database Information Worksheet](#) for the description of each field on this panel. (If you are performing an upgrade installation, you must select **No**. Refer to [Chapter 6, "Upgrading Prime Service Catalog"](#) for more detailed information.)

**Step 9** On the Service Catalog Database panel, enter the information for the ServiceCatalog database.

- If you selected **Yes** in the last panel, you will see a **"Create Database"** button on this panel, and the **Next** button is grayed out. Notice that you need to enter the password for either the "sys" user (for Oracle) or the "sa" user (for SQL Server) which the installer will use to connect to your database server. Once you fill out the information on this panel, click the **"Create Database"** button. If you get the message "ServiceCatalog database created successfully", click **OK** to close the message. The **Next** button is now enabled.
- If you selected **No** in the last panel, you just need to fill out the information for the existing ServiceCatalog database, and select the **"Execute database scripts"** check box.



**Note** The "Create Database" feature will create a very basic ServiceCatalog database that meets the minimum requirements for the Service Catalog application to operate. This feature is recommended for a Demo or Test system, but for a Production system, it is advisable that you work with your DBA to create the ServiceCatalog database in advance which meets all of the product requirements as described in the Configuring Databases section, as well as any performance, reliability, and security requirements that adhere to your corporate policy.

**Step 10** Click **Next**.

The installer will connect to the database to validate the required settings for the database. If the installer created the database for you, then it would meet all of the required settings, and the validation test would pass. If you provided the information for an existing database, then the installer may report a validation error if it detects that certain required database setting is missing. (Refer to [Configuring the Service Catalog Database](#) for the database requirements.) If a database validation error occurs, you can do the following:

- Close the error dialog and click **Cancel** to exit the installation wizard, or
- Fix the missing database setting on a separate database connection session. Then come back to this screen, close the error dialog, and click **Next** again. At this point, the installer will repeat the validation test, and if the test passes, it will let you move to the next panel.

**Step 11** On the Master Key Password panel, enter the master key password.

The password provided must match the password rules, as described on the panel. The master key password is saved in two files, kek\_new.txt and kek\_old.txt, under the <ServiceCatalog\_Install\_Dir>/dist directory.

The kek\_new.txt and kek\_old.txt files must be backed up and stored in a safe location. The application server cannot login to the Service Catalog database without the master key password files. If you lose these master key password files, please contact Cisco TAC for help.

**Step 12** On the Service Catalog Configuration panel:

- Enter the information for the WebLogic server where Service Catalog application (i.e. RequestCenter.war) will be deployed. Refer to the [WebLogic Application Server Information Worksheet](#) that you have filled out in Appendix A. For more information, see [Service Catalog Configuration for WebLogic](#).
- Click the **Advanced Options**. For WebLogic, select the Enable Clustering option if you have a Clustered WebLogic environment. For information on other advanced options details see, [Advanced Options Table for Service Catalog Configuration panel](#).
- Click **Close** in the Advanced Options window and Click **Next**.

The Service Link Configuration window is displayed.

**Step 13** Enter the information for the WebLogic server where Service Link application (i.e. ISEE.war) will be deployed and Click **Next**. Refer to the Application Server Information Worksheet that you have filled out earlier. See [Service Link Configuration Table for Custom Installation using WildFly Server](#).



**Note**

If Service Catalog is deployed in a Clustered WebLogic, then Service Link must be deployed in a separate WebLogic server that does not belong to the Cluster.

**Step 14** In the Messaging Configuration window enter information for the JMS Queue Server and Click **Next**. Refer to the [WebLogic Application Server Information Worksheet](#) that you filled out in Appendix A. For more information, see [Messaging Configuration Table for Custom Installation](#).

**Step 15** Click **Next** to display the Messaging Queues Configuration panel. Enter the queue names as how you prepared them for your WebLogic server. Refer to the [WebLogic Application Server Information Worksheet](#) that you filled out in Appendix A.

**Step 16** On the Service Catalog Administration Configuration panel, enter the information for the SMTP server, and the password for the Site Administrator. Refer to the [Service Catalog Administration Configuration Table](#) for the description of each field on this panel. Click **Next**.

**Step 17** Click Install in the Pre-Installation Summary panel to begin installation.

The installer will display the progress bar. It may take up to 30 minutes for the installer to complete. Do not interrupt or abort the installer during this process.

- Step 18** If the installation process completes successfully, the **Install Complete** window appears. Click **Done** to exit the installation wizard.
- 

You have completed the execution of the Service Catalog installer. You can now go to the [Postinstallation Configuration for WebLogic](#) section to complete the rest of the configuration steps.

## Postinstallation Configuration for WebLogic

When the Prime Service Catalog installation wizard completes, it creates the following WAR files underneath the “<ServiceCatalog\_Install\_Dir>\dist” directory:

- RequestCenter.war
- ISEE.war

The Prime Service Catalog installation wizard did not automatically deploy these WAR files on your WebLogic Server. You need to follow the instructions in this section to manually deploy these WAR files. See the WebLogic Application Server Information Worksheet that you filled out in Appendix A to get the parameter values needed during the deployment.

### Extracting WAR Files

You must deploy **RequestCenter.war** and **ISEE.war** in extracted format. To extract the WAR files:

- 
- Step 1** Create a subdirectory called **applications** underneath the “<ORACLE\_HOME>\user\_projects\domain\<your\_domain>” directory, if it does not already exist. Note that you perform this task on the computer where the WebLogic Administration Server is running.
- Step 2** Create two subdirectories underneath “applications” as follows:
- RequestCenter
  - ServiceLink
- Step 3** Extract the WAR files (generated by the Prime Service Catalog installation wizard) into the new directories that you just created:
- Unzip file “<ServiceCatalog\_Install\_Dir>\dist\RequestCenter.war” into the “<ORACLE\_HOME>\user\_projects\domain\<your\_domain>\applications\RequestCenter” directory.
  - Unzip file “<ServiceCatalog\_Install\_Dir>\dist\ISEE.war” into the “<ORACLE\_HOME>\user\_projects\domain\<your\_domain>\applications\ServiceLink” directory.




---

**Note** If the RequestCenter or ServiceLink subdirectory under the “<ORACLE\_HOME>\user\_projects\domain\<your\_domain>\applications” directory is not empty, you must first empty the entire directory before extracting the contents of the new RequestCenter.war or ISEE.war file into it. This is because the unzip utility may only overwrite files with the same names. There may be some “remnants” of old files in your destination directory that may be inadvertently deployed.

---

## Deploying RequestCenter.war

Perform the following steps to deploy RequestCenter.war file:

- 
- Step 1** Log on to the WebLogic Administration Console.
  - Step 2** Start your WebLogic Server (or WebLogic Cluster) if it is not already running.
  - Step 3** If WebLogic was installed in PRODUCTION mode, click **Lock & Edit** so that you can proceed to make changes. Otherwise, you can skip this step.
  - Step 4** In the left pane, click **Deployments**.
  - Step 5** Click **Install**.
  - Step 6** Browse to (or enter the full pathname of) the directory “<ORACLE\_HOME>\user\_projects\domain\<your\_domain>\applications.” You should see the two subdirectories called “RequestCenter” and “ServiceLink”.
  - Step 7** Click the radio button for **RequestCenter**, then click **Next**.
  - Step 8** Choose the **Install this deployment as an application** option, then click **Next**.
  - Step 9** Choose your WebLogic Server (or WebLogic Cluster) as the Target, then click **Next**.
  - Step 10** Enter **RequestCenter** in the **Name** field. Select the **Copy this application onto every target for me** option. Click **Next**.
  - Step 11** Choose the **No, I will review the configuration later** option, then click **Finish**. The progress indicator begins. This may take several minutes to complete.
  - Step 12** Wait until the screen is refreshed to show that the “RequestCenter” application has State=Active and Health=OK. If your WebLogic Application Server was installed in PRODUCTION mode, then the State may be set to “Prepared” until you click **Activate Changes**.
- 

## Deploying ISEE.war

Perform the following steps to deploy ISEE.war file:

- 
- Step 1** Log on to the WebLogic Administration Console.
  - Step 2** Start your WebLogic Server if it is not already running (if you have a WebLogic Cluster environment, then start the “Service Link WebLogic Server”. The Service Link application cannot be deployed on a Cluster).



- Step 3** If your WebLogic was installed in PRODUCTION mode, click **Lock & Edit** so that you can proceed to make changes. Otherwise, you can skip this step.
- Step 4** In the left pane, click **Deployments**.
- Step 5** Click **Install**.
- Step 6** Browse to (or enter the full pathname of) the directory “<ORACLE\_HOME>\user\_projects\domain\<your\_domain>\applications.” You should see the two subdirectories called “RequestCenter” and “ServiceLink”.
- Step 7** Click the radio button for **ServiceLink**, then click **Next**.
- Step 8** Choose the **Install this deployment as an application** option, then click **Next**.
- Step 9** Choose your WebLogic Server as the Target. (If you have a WebLogic Cluster, choose the stand-alone “Service Link WebLogic Server” as the Target.) Then click **Next**.
- Step 10** Enter **ServiceLink** in the **Name** field. Select the **Copy this application onto every target for me** option. Click **Next**.
- Step 11** Choose the **No, I will review the configuration later** option, then click **Finish**. The progress indicator begins. This may take several minutes to complete.
- Step 12** Wait until the screen is refreshed to show that the “ServiceLink” application has State=Active and Health=OK. If your WebLogic Application Server was installed in PRODUCTION mode, then the State may be set to “Prepared” until you click **Activate Changes**.
- 

## Verifying Your Installation

Perform the following steps to verify your installation:

- Step 1** Test your installation by opening a new browser window and connect to the following URL:
- `http://<AppServer_Host>:<Port>/RequestCenter`
- where <AppServer\_Host> = the host name of your WebLogic Server, and <Port> = the port number used by your WebLogic Server.
- For example,
- `http://mypsc.mydomain.com:8001/RequestCenter`
- Step 2** Log in as the Site Administrator. For a new installation of Service Catalog, the username for the Site Administrator is "admin" and the password is the value you entered on the Service Catalog Administration Configuration panel of the installation wizard.
- Step 3** Navigate to the Service Link Module.
- Step 4** On the left hand side of the panel, under Service Link Status, verify that the connection has a green status.
- You have completed the installation for Cisco Prime Service Catalog on WebLogic.
-

## Configuring Web Server

At this time, you should configure the plugin for your Web Server to point to your WebLogic Server (or your WebLogic Cluster). The following Web Servers are supported with WebLogic Server:

- Red Hat Http Server 2.4.6
- IIS 8.5

This chapter does not contain instructions on how to configure your Web Server Plugin. Any plugin configurations between your Web Server and WebLogic are not handled by the Prime Service Catalog installer program. There is no Cisco library or binary that needs to be installed or configured on your Web Server installation. You should follow instructions provided by either Oracle (for WebLogic Plugin) or by the vendor of your web server.

This section contains only examples of the settings that you may want to add to your web server configuration file.

The following are examples for the settings for **Http Web Server**. Add the following entries to the end of file **httpd.conf**:

```
LoadModule weblogic_module modules/mod_wl_24.so

<IfModule mod_weblogic.c>
WebLogicHost ml.mydomain.com
WebLogicPort 8001
</IfModule>

<Location /RequestCenter>
SetHandler weblogic-handler
PathTrim /
</Location>
```

The following are examples for the settings for **IIS 8.5 Web Server**. Add the following entries to file **iisproxy.ini**:

```
WebLogicHost=ml.mydomain.com
WebLogicPort=8001
ConnectTimeoutSecs=20
ConnectRetrySecs=5
KeepAliveEnabled=true
KeepAliveSecs=20
WlForwardPath=/RequestCenter
```

After you complete the Plugin configuration, you need to restart both the Web Server and the WebLogic Application Server.

Repeat the steps described in the [Verifying Your Installation](#) to verify that your Web Server plugin is configured correctly to point to your WebLogic Server. However, this time connect to the following URL

`http://<WebServer_Host>:<WebServer_Port>/RequestCenter`

where `<WebServer_Host>` = the host name of your Web Server, and `<WebServer_Port>` = the port number used by your Web Server (omit the port number if it is set to 80).

For example,

`http://mywebserver.mydomain.com/RequestCenter`

