



Configuring Transporter

Overview

Once Transporter is connected to the selected source and destination, you may want to configure the way the application works. You can modify how Transporter operates on initial startup and the way it works when copying data objects. The configuration options that are selected are saved for future sessions.

Configuring Transporter Options

Clicking **Continue** on the **Transporter** toolbar or selecting the **Configure** option from the **File** main menu displays the **Configuration Options** dialog.

Use this dialog to configure Transporter to work according to your personal preference.

Some options can be locked down so that no one without Superuser authorization can modify the settings. These options have a **Restricted** check box beside them.



Note

Users without Superuser security will not see the **Restricted** check boxes.

If a configuration option has been restricted, that option is unavailable to other users. These configuration restrictions apply only to the selected destination. If another source is selected for the destination, then the same restrictions do not apply.

Transporter options are saved in the user's Transporter Home Directory to a file called *user.props*. For example, a file called *user.props* will be created in the following directory:

- For Windows: **C:\Documents and Settings\<user>\.transporter\config**



Note

A user's home directory is different on different platforms. The examples provided are specific to internal Windows XP systems and intended for demonstration only. Your configuration will be different.

Following are examples of user home locations by platform:

Microsoft Windows NT: <root>\WINNT\Profiles\<user> %UserProfile%

Microsoft Windows 2000, XP and 2003: <root>\Documents and Settings\<user>

Microsoft Windows Vista and 7: <root>\Users\<user>

Configuration Options Dialog

This section describes the options in the **Configuration Options** dialog.

General Options Section

- **Connect on Startup** – Connections started to the most recently selected source and destination are made whenever Transporter is started.
- **Read on Connect/New Data Type** – Once a connection is established between the source and destination, the data type used in the last Transporter session is read and displayed. If the data type is changed during the session, it is also read.
- **Include Duplicates (Replace Allowed)** – Displays any duplicate data objects on the **Source** side in blue. If this option is not selected, then objects already existing on the **Destination** side are not displayed on the **Source** side (since there may be no need to copy them again).



Note

A job group will be displayed if at least one child job within that job group is not a duplicate even if the job group is duplicated.

- **Log Directory** – Specifies where the session log file(s) are written to.

By Default, session logs are created with `.sess` extension and saved to the user's Transporter Home directory under a subdirectory called sessions. This default location may be changed given this option.

Default location examples:

- For Windows: `C:\Documents and Settings\<user>\.transporter\session\transporter-20100506025113898.sess`



Note

A user's home directory is different on different platforms. The examples provided are specific to internal Windows XP systems and intended for demonstration only. Your configuration will be different.

Following are examples of user home locations by platform:

Microsoft Windows NT: `<root>\WINNT\Profiles\<user> %UserProfile%`

Microsoft Windows 2000, XP and 2003: `<root>\Documents and Settings\<user>`

Microsoft Windows Vista and 7: `<root>\Users\<user>`

Transport Options

- **Display Warnings** – Displays a warning message each time a non-critical issue is encountered as data is copied. The operator has to acknowledge each warning message as it is displayed to continue the copying operation.
- **Annotate** – Updates either the **Description** or **Notes** (for Jobs) field with the names of the source, the user, and the date and time of the transfer of data objects.

**Note**

If you are copying data objects, Transporter may not be able to annotate these objects. The **Description** text fields of data objects are limited to 4000 characters and there may not be any room available in the **Description** field to add annotations. Deleting text in the object's **Description** field will provide room for annotations. If Transporter cannot annotate the data objects it is transferring, this is noted in the session log. This issue does not apply to jobs that are copied when using the **Annotate** option.

- **Disable Copy** – Disables each job, event, or resource as it is copied into the destination. This option ensures that the object cannot be used in the schedule until the operator manually enables it. This option only applies to jobs, events, and resources; other objects do not have this attribute.
- **Job Transport Options Tab**
 - **Auto Select Dependencies** – If a job selected for copying has any predecessors, all of its predecessors are also automatically selected for copying. This option works in conjunction with the **Replace Existing Dependencies** option.

**Note**

The **Auto Select** option may affect system performance when used.

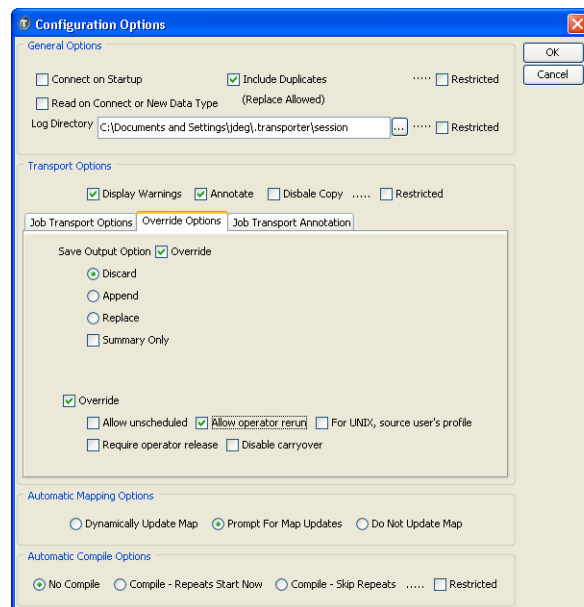
- **Replace Existing Dependencies** – Selects only a dependency if it does not already exist in the destination.
- **Auto Select Parent Group** – If a job selected for copying is a child job, then all of the parent job groups it belongs to are also automatically selected for copying.
- **Auto Select Children** – If a job selected for copying is a parent job, then all of its child jobs are also automatically selected for copying.
- **Auto Add (no errors, no conflict)** – Performs the Job transport operation automatically if no conflicts or errors are detected. If a mapping error or conflict occurs, the **Job Definition Mapping** dialog is displayed to resolve the problem interactively.
- **Allow Conflicts** – Allows a Job transport as long as there are no errors during the copying operation, even if mapping conflicts occur. If a conflict between the source and destination is not resolved, that job may still run correctly but may be missing dependencies, variables, or events, etc.
- **Effective Date** – Enter a date in the text field or click on the down arrow to display a calendar where a date can be selected to indicate the earliest date that the copied job can be compiled into the schedule.

**Warning**

Changing the default Effective Date (current date) from the current date while transferring job groups cause severe disruptions in the production schedule. Do not modify the Effective Date option to resolve this issue. Instead use one of two methods to transfer a job group with a future effective date. Either disable the job group and then transfer it with the default Effective Date (current date) or select the Disable Copy and No Compile options in this dialog before transferring job groups. After the job group transfer is complete, enable the job group and schedule it as needed.

- **Override Options Tab** – Sets the default handling of job output.

Figure 4-1 Configuration Options, Override Options Tab



- **Save Output Option** – Specifies what will happen to the job's output. If job output is saved, you can view it from the **Output** tab of the **Job Detail** dialog. You can choose from the following options:
 - **Discard** – Does not save the job output. (Default)
 - **Append** – Saves the complete output from each job instance, adding the output to the previous job instance's output.
 - **Replace** – Saves the complete output from each job instance, overwriting the previous job instance's output.
 - **Summary Only** – Selecting this option saves the job output in a summary form. This option is useful when jobs have long job output and you do not want the entire output file. Not available if the **Discard** option is selected.
 - **Allow unscheduled** – Enables the job to be inserted into the production schedule on an as-needed basis. The default is that unscheduled instances are allowed. If you do not want the job to run on an ad hoc basis, you can clear this option to prevent non-scheduled submissions.
 - **Allow operator rerun** – Allows the operator to rerun a job. The default is allow operator reruns (options selected).

- **For UNIX, source user's profile** – Allows you to execute Unix user profiles. This option provides for the execution of all variables in a Unix user's profile. Without this option, Unix user profile variables that are referenced by scripts are not being executed, causing errors in TES.
- **Require operator release** – Holds the job until an operator releases it. The job will not run until it is released. When all the job's dependencies are met, and it is ready to run, its status is *Waiting On Operator*. The information in the **Operator Instructions** field (**Description** tab) can inform the operator of any external requirements that need to be met before the job is released.
- **Disable carryover** – Disables the job carry forward feature that appends the jobs that did not run in the current production schedule to the next day's production schedule. Any job from the current production schedule that is not in an **Active** or a **Launched** status when the next production day starts, will not be carried over to the next production day. The default is to enable job carry forward (cleared).
- **Job Transport Annotation Tab** – When an object is transported, a description of the transport operation is annotated to the description field of the object, if **Annotate** is selected. This option provides for a customizable annotation message to the job description during transport. Use the **Configuration Options** dialog to supply a global annotation message which will apply to all jobs during transport.

To override the global setting during interactive job transport, supply a new value in the **Annotation** tab of the job transport.

The job is transported with the customized annotation included in the job's notes field. In the following example, the annotation has been overwritten by appending with **xxx** at the end.

Also, a description of the transport operation is annotated at the end of the custom annotation.

Automatic Mapping Option Section

- **Dynamically Update Map** – Maps the object in the source as soon as a mapping selection is made from the destination during job transport.
- **Prompt for Map Updates** – Each time data objects are selected to resolve conflicts or errors during job transport, you are prompted to update the mapping.
- **Do Not Update Map** – The paths between objects in the source and destination are manually resolved during job transport, but not mapped.

Automatic Compile Option Section

These compiling options are used to control compilation of production schedules at the destination, during job transport. When a job is transported, the job update will affect the destination production schedule given the options selected.

- **No Compile** – The changes are not applied until the next time the schedule is compiled. The changes do not apply to the schedule currently running (including the future days already compiled).
- **Compile-Repeats Start Now** – The changes are applied to the schedule currently running. Any changes that apply to the repeating jobs within the current day's schedule take effect when the schedule is recompiled. This is the same as selecting the **Start today's repeating job(s) now** option that is in the **Effective Date** dialog displayed in the Tidal Web client whenever adding a repeating job with an associated calendar date belonging to the current production schedule.
- **Compile-Skip Repeats** – The changes are applied to the schedule currently running.

Instances of repeating jobs are skipped if they would have run prior to the current time.

