



CHAPTER 2

Graphical User Interface

The Cisco Configuration Engine GUI is partially compliant with the Accessibility Design Requirements. This chapter provides general information about the GUI.

Logging In

Step 1 Launch your web browser.

This user interface supports:

- Internet Explorer 6.0 and above

Step 2 Go to the Cisco Configuration Engine URL.

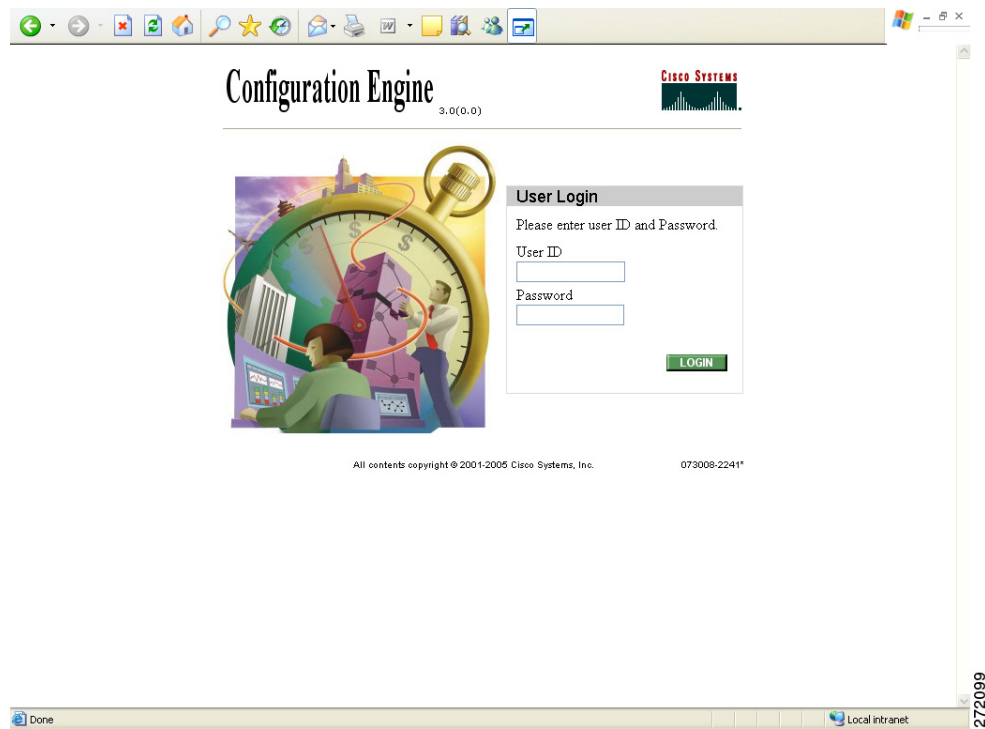
For example: **http://<ip_address>**



Note If encryption is set during Setup (see [“Encryption” section on page 1-13](#)), use **https://<ip_address>**.

The login window appears (see [Figure 2-1](#)).

Figure 2-1 Logging Into the Configuration Engine



Step 3 Enter your **User ID**.

This is the value for the Configuration Engine login parameter that you entered during setup.

Step 4 Enter your password.

Step 5 Click **LOGIN**.

For an Administrator, the full-function Cisco Configuration Engine Home page appears (see [Figure 2-2](#)).

For an Operator, a limited-function Cisco Configuration Engine Home page appears without access to user-related tasks.

Figure 2-2 Administrator-level Home Page

Configuration Engine 3.0(0.0) **CISCO SYSTEMS**

Home Devices Users Jobs Tools Image Service UserID: admin Logout

Important Instructions:

- Do NOT use the browser Back and Forward buttons.
- Please navigate using the links in the pages.

Configuration Engine Service Overview

- Devices**
Device Management and Sub device management.
- Users**
User Management: Add/Edit/Delete user or Change password.
- Jobs**
Query/Cancel/Stop/Restart Jobs
- Tools**
Group Management/Namespace Management/Query Management/Data Management/Directory Management/Template Management/Security Management/Log Management/Service Management/Bulk Data Management/Email Management
- Image Service**
Images/Search Parameters.

281044

Logging Out

To log out of the system, click **Logout**.

Levels of Access

In Internal Directory mode, there are two categories of users who have access to device information:

- Administrator
- Operator

An Administrator has full access to system administration tasks. An Operator has access to only limited set of tasks (see “[Operator-Level Operations](#)” section on page 2-4).

Operator-Level Operations

After logging into the Cisco Configuration Engine, an Operator has access to the following functions:

- Device
 - Add
 - Edit
 - Subdevices
 - Update Device
 - Query Device Inventory
- Tools
 - Change Password
 - View Event Log
 - View Image Server Log
- Jobs
 - Query Job
 - Cancel/Stop Job
 - Restart Job
- Image Service
 - View Image

Administrator-Level Operations

An Administrator can access all of the functions provided by the Cisco Configuration Engine user interface in both Internal Directory mode and External Directory mode.

Feature Operations

The Cisco Configuration Engine GUI (see [Figure 2-2](#)) provides the following feature operations:

- Devices – Click this tab to conduct operations on Devices and Subdevices (see [Chapter 3, “Device and Subdevice Manager”](#)).
- Users – Click this tab to operate on user accounts (see [Chapter 4, “User Account Manager”](#)).
- Jobs – Click this tab to access background update tasks that have been assigned a Job IDs (see [Chapter 5, “Configuration and Image Update Jobs Manager”](#)).
- Tools – Click this tab to access the following features:
 - Group Manager (see [Chapter 6, “Groups”](#))
 - Namespace Manager (see [Chapter 7, “Namespace Manager”](#))
 - Query Manager (see [Chapter 8, “Query Manager”](#))
 - Data Manager (see [Chapter 9, “Data Manager”](#))
 - Directory Manager (see [Chapter 10, “Directory Manager”](#))

- Parameter Manager (see [Chapter 11, “Parameter Manager”](#))
- Template Manager (see [Chapter 12, “Templates”](#))
- Security Manager (see [Chapter 13, “Security Manager”](#))
- Log Manager (see [Chapter 14, “Log Manager”](#))
- Service Manager (see [Chapter 15, “Service Manager”](#))
- Bulk Data Manager (see [Chapter 16, “Bulk Data Manager”](#))
- Email Manager (see [Chapter 17, “Email Manager”](#))
- Image Service – Click this tab to work with Images and Search Parameters (see [Chapter 18, “Image Service”](#)).

