



## **Multicast Configuration Guide for Cisco NCS 540 Series Routers, Cisco IOS XR Release 7.3.x**

**First Published:** 2021-02-26

### **Americas Headquarters**

Cisco Systems, Inc.  
170 West Tasman Drive  
San Jose, CA 95134-1706  
USA  
<http://www.cisco.com>  
Tel: 408 526-4000  
800 553-NETS (6387)  
Fax: 408 527-0883

THE SPECIFICATIONS AND INFORMATION REGARDING THE PRODUCTS IN THIS MANUAL ARE SUBJECT TO CHANGE WITHOUT NOTICE. ALL STATEMENTS, INFORMATION, AND RECOMMENDATIONS IN THIS MANUAL ARE BELIEVED TO BE ACCURATE BUT ARE PRESENTED WITHOUT WARRANTY OF ANY KIND, EXPRESS OR IMPLIED. USERS MUST TAKE FULL RESPONSIBILITY FOR THEIR APPLICATION OF ANY PRODUCTS.

THE SOFTWARE LICENSE AND LIMITED WARRANTY FOR THE ACCOMPANYING PRODUCT ARE SET FORTH IN THE INFORMATION PACKET THAT SHIPPED WITH THE PRODUCT AND ARE INCORPORATED HEREIN BY THIS REFERENCE. IF YOU ARE UNABLE TO LOCATE THE SOFTWARE LICENSE OR LIMITED WARRANTY, CONTACT YOUR CISCO REPRESENTATIVE FOR A COPY.

The Cisco implementation of TCP header compression is an adaptation of a program developed by the University of California, Berkeley (UCB) as part of UCB's public domain version of the UNIX operating system. All rights reserved. Copyright © 1981, Regents of the University of California.

NOTWITHSTANDING ANY OTHER WARRANTY HEREIN, ALL DOCUMENT FILES AND SOFTWARE OF THESE SUPPLIERS ARE PROVIDED "AS IS" WITH ALL FAULTS. CISCO AND THE ABOVE-NAMED SUPPLIERS DISCLAIM ALL WARRANTIES, EXPRESSED OR IMPLIED, INCLUDING, WITHOUT LIMITATION, THOSE OF MERCHANTABILITY, FITNESS FOR A PARTICULAR PURPOSE AND NON-INFRINGEMENT OR ARISING FROM A COURSE OF DEALING, USAGE, OR TRADE PRACTICE.

IN NO EVENT SHALL CISCO OR ITS SUPPLIERS BE LIABLE FOR ANY INDIRECT, SPECIAL, CONSEQUENTIAL, OR INCIDENTAL DAMAGES, INCLUDING, WITHOUT LIMITATION, LOST PROFITS OR LOSS OR DAMAGE TO DATA ARISING OUT OF THE USE OR INABILITY TO USE THIS MANUAL, EVEN IF CISCO OR ITS SUPPLIERS HAVE BEEN ADVISED OF THE POSSIBILITY OF SUCH DAMAGES.

Any Internet Protocol (IP) addresses and phone numbers used in this document are not intended to be actual addresses and phone numbers. Any examples, command display output, network topology diagrams, and other figures included in the document are shown for illustrative purposes only. Any use of actual IP addresses or phone numbers in illustrative content is unintentional and coincidental.

All printed copies and duplicate soft copies of this document are considered uncontrolled. See the current online version for the latest version.

Cisco has more than 200 offices worldwide. Addresses and phone numbers are listed on the Cisco website at [www.cisco.com/go/offices](http://www.cisco.com/go/offices).

Cisco and the Cisco logo are trademarks or registered trademarks of Cisco and/or its affiliates in the U.S. and other countries. To view a list of Cisco trademarks, go to this URL: <https://www.cisco.com/c/en/us/about/legal/trademarks.html>. Third-party trademarks mentioned are the property of their respective owners. The use of the word partner does not imply a partnership relationship between Cisco and any other company. (1721R)

© 2021 Cisco Systems, Inc. All rights reserved.



# CONTENTS

---

## CHAPTER 1

### Implementing Layer 3 Multicast 1

Enabling Multicast 2

Supported Multicast Features 3

Protocol Independent Multicast 3

PIM BFD Overview 4

Configure PIM BFD 4

Verification 5

PIM Bootstrap Router 6

Configuring PIM Bootstrap Router 6

Reverse Path Forwarding 7

Setting the Reverse Path Forwarding Statically 7

RPF Vector Encoding Using IETF Standard 8

Configuring RPF Vector (IETF Standard Encoding) 8

PIM-Source Specific Multicast 9

IGMPv2 10

Multipath Option 10

Configuring PIM-SSM 12

Configuring PIM Parameters 13

PIM-Sparse Mode 14

Restrictions and Usage Guidelines 15

Multicast Source Discovery Protocol 15

Interconnecting PIM-SM Domains with MSDP 16

Controlling Source Information on MSDP Peer Routers 18

Designated Routers 20

Internet Group Management Protocol 22

Configuring Maximum IGMP Per Interface Group Limit 23

|  |    |
|--|----|
| SSM Static Source Mapping  | 24 |
| Statistics for Ingress Multicast Routes  | 26 |
| Configuring Statistics for Ingress Multicast Routes  | 27 |
| Multicast Route Statistics   | 28 |
| Restrictions and Usage Guidelines for Multicast Route Statistics   | 28 |
| Configure Multicast Route Statistics   | 29 |
| Bundle Member Selection  | 30 |
| Multicast Over IPV4 Unicast GRE Tunnels  | 31 |
| Use Case: Video Streaming  | 38 |
| Multicast over Access Pseudo-Wire  | 40 |
| Configuring Multicast Over Access Pseudo-Wire  | 40 |
| Multicast Label Distribution Protocol  | 44 |
| Multicast Label Distribution Protocol (MLDP) for Core  | 45 |
| Characteristics of MLDP Profiles on Core   | 45 |
| Label Switching Multicast for Edge Router  | 45 |
| Multicast MLDP Profile 14 support on an Edge Router  | 45 |
| Label Switched Multicast (LSM) Multicast Label Distribution Protocol (mLDP) based Multicast VPN (mVPN) Support | 47 |
| Benefits of LSM MLDP based MVPN  | 47 |
| Configuring MLDP MVPN  | 47 |
| Packet Flow in mLDP-based Multicast VPN  | 48 |
| Realizing a mLDP-based Multicast VPN   | 48 |
| Characteristics of mLDP Profiles   | 49 |
| Configuration rules for profiles   | 49 |
| MLDP inband signaling  | 49 |
| Configuration Process for MLDP MVPN (Intranet)   | 49 |
| Configuration Example for MLDP on Core   | 51 |
| Configure VRF MLDP In-Band Signaling on Edge Routers   | 51 |
| Configure Global MLDP In-band Signaling on Edge Routers  | 52 |
| Configuration Examples for Inband mLDP Profiles on Edge Routers  | 52 |
| Verification of MLDP Configuration on Edge Routers   | 53 |
| Restrictions for MVPN Profiles   | 55 |
| Configuration Examples for MVPN Profiles   | 55 |
| Configuration Examples for Inband mLDP Profiles  | 55 |

|                  |  |           |
|------------------|--|-----------|
| <b>CHAPTER 2</b> | <b>Implementing IGMP Snooping</b>  | <b>57</b> |
|                  | Prerequisites for IGMP Snooping  | 57        |
|                  | Supported Features and Restrictions for IGMP Snooping                          | 57        |
|                  | IGMP Snooping Overview   | 59        |
|                  | Description of Basic Functions   | 59        |
|                  | High Availability Features   | 59        |
|                  | Bridge Domain Support  | 60        |
|                  | Multicast Router and Host Ports  | 60        |
|                  | Multicast Traffic Handling within a Bridge Domain with IGMP Snooping Enabled   | 60        |
|                  | IGMP Snooping Configuration Profiles   | 62        |
|                  | Creating Profiles  | 63        |
|                  | Attaching and Detaching Profiles   | 63        |
|                  | Changing Profiles  | 63        |
|                  | Default IGMP Snooping Configuration Settings                                   | 64        |
|                  | IGMP Snooping Configuration at the Bridge Domain Level                         | 65        |
|                  | IGMP Minimum Version   | 65        |
|                  | Group Membership Interval, Robustness Variable, and Query Interval             | 65        |
|                  | Multicast over Integrated Routing Bridging Active/Active Multihome             | 66        |
|                  | How to Configure IGMP Snooping   | 66        |
|                  | Creating an IGMP Snooping Profile  | 66        |
|                  | Where to Go Next   | 67        |
|                  | Attaching a Profile and Activating IGMP Snooping on a Bridge Domain            | 67        |
|                  | Detaching a Profile and Deactivating IGMP Snooping on a Bridge Domain          | 68        |
|                  | Attaching and Detaching Profiles to Ports Under a Bridge                       | 70        |
|                  | Verifying Multicast Forwarding   | 71        |
|                  | Configuration Examples for IGMP Snooping                                       | 72        |
|                  | Configuring IGMP Snooping on Physical Interfaces Under a Bridge: Example       | 72        |
|                  | Configuring IGMP Snooping on VLAN Interfaces Under a Bridge: Example           | 73        |
|                  | Configuring IGMP Snooping on Ethernet Bundles Under a Bridge: Example          | 74        |
|                  | Configuring Multicast over Integrated Routing Bridging Active/Active Multihome | 75        |
|                  | Verifying IGMP Snooping and EVPN Sync  | 77        |
|                  | Verifying Dual DR PIM Uplink   | 78        |
|                  | Verifying Designated Forwarder Election  | 78        |

|                       |    |
|-----------------------|----|
| Additional References | 79 |
|-----------------------|----|

---

**CHAPTER 3****MLD Snooping 81**

|  |    |
|--|----|
| Prerequisites for MLD Snooping                       | 82 |
| Supported Features and Restrictions for MLD Snooping | 82 |
| Advantages of MLD Snooping                           | 83 |
| High Availability (HA) features for MLD              | 83 |
| Bridge Domain Support for MLD                        | 83 |
| Multicast Router and Host Ports                      | 84 |
| Multicast Router Discovery for MLD                   | 84 |
| Multicast Traffic Handling for MLD                   | 84 |
| Multicast Listener Discovery over BVI                | 85 |
| Configuration  | 86 |
| IPv6 Multicast Listener Discovery Snooping over BVI  | 88 |
| Configuring Internal Querier for MLD Snooping        | 88 |
| Creating a MLD Snooping Profile                      | 89 |
| Deactivating MLD Snooping on a Bridge Domain         | 90 |
| Configuring Static Mrouter Ports (MLD)               | 91 |
| Configuring Router Guard (MLD)                       | 91 |
| Configuring Immediate-leave for MLD                  | 92 |
| Configuring Internal Querier for MLD                 | 93 |
| Configuring Static Groups for MLD                    | 94 |
| Configuring MLD Snooping                             | 96 |
| Configuring MLD Snooping on Ethernet Bundles         | 97 |



## CHAPTER 1

# Implementing Layer 3 Multicast

Multicast routing allows a host to send packets to a subset of all hosts as a group transmission rather than to a single host, as in unicast transmission, or to all hosts, as in broadcast transmission. The subset of hosts is known as group members and are identified by a single multicast group address that falls under the IP Class D address range from 224.0.0.0 through 239.255.255.255.

The multicast environment consists of senders and receivers. Any host, regardless of whether it is a member of a group, can send to a group. However, only the members of a group receive the message.

The following protocols are supported to implement multicast routing:

- **IGMP**—IGMP is used between hosts on a network (for example, LAN) and the routers on that network to track the multicast groups of which hosts are members.
- **PIM SSM**— Protocol Independent Multicast in Source-Specific Multicast (PIM-SSM) has the ability to report interest in receiving packets from specific source addresses (or from all but the specific source addresses), to an IP multicast address.

### Prerequisites for Implementing Multicast Routing

- You must install and activate the multicast RPM package.
- You must be familiar with IPv4 multicast routing configuration tasks and concepts.
- Unicast routing must be operational.

### Restrictions

- [Enabling Multicast, on page 2](#)
- [Supported Multicast Features, on page 3](#)
- [Protocol Independent Multicast, on page 3](#)
- [PIM BFD Overview, on page 4](#)
- [PIM Bootstrap Router, on page 6](#)
- [Reverse Path Forwarding , on page 7](#)
- [RPF Vector Encoding Using IETF Standard , on page 8](#)
- [PIM-Source Specific Multicast, on page 9](#)
- [PIM-Sparse Mode, on page 14](#)
- [Multicast Source Discovery Protocol, on page 15](#)
- [Designated Routers, on page 20](#)

- [Internet Group Management Protocol](#), on page 22
- [Statistics for Ingress Multicast Routes](#), on page 26
- [Multicast Route Statistics](#) , on page 28
- [Bundle Member Selection](#) , on page 30
- [Multicast Over IPV4 Unicast GRE Tunnels](#), on page 31
- [Use Case: Video Streaming](#), on page 38
- [Multicast over Access Pseudo-Wire](#), on page 40
- [Multicast Label Distribution Protocol](#), on page 44
- [Label Switching Multicast for Edge Router](#), on page 45
- [Multicast MLDP Profile 14 support on an Edge Router](#), on page 45
- [Label Switched Multicast \(LSM\) Multicast Label Distribution Protocol \(mLDP\) based Multicast VPN \(mVPN\) Support](#), on page 47
- [Configuration Example for MLDP on Core](#), on page 51
- [Configure VRF MLDP In-Band Signaling on Edge Routers](#) , on page 51
- [Configure Global MLDP In-band Signaling on Edge Routers](#), on page 52
- [Configuration Examples for Inband mLDP Profiles on Edge Routers](#), on page 52
- [Verification of MLDP Configuration on Edge Routers](#), on page 53
- [Restrictions for MVPN Profiles](#), on page 55
- [Configuration Examples for MVPN Profiles](#), on page 55

## Enabling Multicast

### Configuration Example

Enables multicast routing and forwarding on all new and existing interfaces.

```
Router#config
Router(config)#multicast-routing
Router(config-mcast)#address-family ipv4
Router(config-mcast-default-ipv4)#interface all enable
*/In the above command, you can also indicate a specific interface (For example, interface
TenGigE0/0/0/3)
for enabling multicast only on that interface/*
Router(config-mcast-default-ipv4)#commit
```

### Running Configuration

```
Router#show running multicast routing
multicast-routing
  address-family ipv4
    interface all enable
  !
```

### Verification

Verify that the Interfaces are enabled for multicast.

```
Router#show mfib interface location 0/3/CPU00/RP0/cpu0
Interface : FINT0/RP0/cpu0 (Enabled)
SW Mcast pkts in : 0, SW Mcast pkts out : 0
TTL Threshold : 0
Ref Count : 2
Interface : TenGigE0/0/0/3 (Enabled)
```



```
SW Mcast pkts in : 0, SW Mcast pkts out : 0
TTL Threshold : 0
Ref Count : 3
Interface : TenGigE0/0/0/9 (Enabled)
SW Mcast pkts in : 0, SW Mcast pkts out : 0
TTL Threshold : 0
Ref Count : 13
Interface : Bundle-Ether1 (Enabled)
SW Mcast pkts in : 0, SW Mcast pkts out : 0
TTL Threshold : 0
Ref Count : 4
Interface : Bundle-Ether1.1 (Enabled)
SW Mcast pkts in : 0, SW Mcast pkts out : 0
TTL Threshold : 0
```

## Supported Multicast Features

- Hardware Offloaded BFD for PIMv4 is supported.
- IPv4 and IPV6 static groups for both IGMPv2/v3 and MLDv1/v2 are supported.
- Protocol Independent Multicast in Source-Specific Multicast (PIM-SSM) mapping is supported.
- PIMv4 SSM and PIMv6 SSM over Bundle sub-interface are supported.
- Load balancing for multicast traffic for ECMP links and bundles is supported. However, an RPF check is performed on the multicast routers to ensure loop prevention in multicast trees.
- IPv6 multicast MLD joins are subjected to hop by hop LPTS punt policer. Tweaking this policer to a higher value achieves convergence at higher scale.  
Also, adjust the ICMP control traffic LPTS hardware policer to a higher value for optimal convergence at higher scale.
- Redundant sources for IPv6 PIM SSM is supported.



---

**Note** You must enable **mcast-routing** in the default VRF to use multicast in some other VRF.

---

## Protocol Independent Multicast

Protocol Independent Multicast (PIM) is a multicast routing protocol used to create multicast distribution trees, which are used to forward multicast data packets.

Proper operation of multicast depends on knowing the unicast paths towards a source or an RP. PIM relies on unicast routing protocols to derive this reverse-path forwarding (RPF) information. As the name PIM implies, it functions independently of the unicast protocols being used. PIM relies on the Routing Information Base (RIB) for RPF information. Protocol Independent Multicast (PIM) is designed to send and receive multicast routing updates.

PIM on Bundle-Ethernet subinterface is supported.

## PIM BFD Overview

The BFD Support for Multicast (PIM) feature, also known as PIM BFD, registers PIM as a client of BFD. PIM can then utilize BFD's fast adjacency failure detection. When PIM BFD is enabled, BFD enables faster failure detection without waiting for hello messages from PIM.

At PIMs request, as a BFD client, BFD establishes and maintains a session with an adjacent node for maintaining liveness and detecting forwarding path failure to the adjacent node. PIM hellos will continue to be exchanged between the neighbors even after BFD establishes and maintains a BFD session with the neighbor. The behavior of the PIM hello mechanism is not altered due to the introduction of this feature. Although PIM depends on the Interior Gateway Protocol (IGP) and BFD is supported in IGP, PIM BFD is independent of IGP's BFD.

Protocol Independent Multicast (PIM) uses a hello mechanism for discovering new PIM neighbors between adjacent nodes. The minimum failure detection time in PIM is 3 times the PIM Query-Interval. To enable faster failure detection, the rate at which a PIM hello message is transmitted on an interface is configurable. However, lower intervals increase the load on the protocol and can increase CPU and memory utilization and cause a system-wide negative impact on performance. Lower intervals can also cause PIM neighbors to expire frequently as the neighbor expiry can occur before the hello messages received from those neighbors are processed. When PIM BFD is enabled, BFD enables faster failure detection without waiting for hello messages from PIM.

## Configure PIM BFD

This section describes how you can configure PIM BFD

```
Router# configure
Router(config)# router pim address-family ipv4
Router(config-pim-default-ipv4)# interface HundredGigE0/1/0/1
Router(config-pim-ipv4-if)# bfd minimum-interval 10
Router(config-pim-ipv4-if)# bfd fast-detect
Router(config-pim-ipv4-if)# bfd multiplier 3
Router(config-pim-ipv4)# exit
Router(config-pim-default-ipv4)# interface TenGigE0/0/0/4
Router(config-pim-ipv4-if)# bfd minimum-interval 50
Router(config-pim-ipv4-if)# bfd fast-detect
Router(config-pim-ipv4-if)# bfd multiplier 3
Router(config-pim-ipv4-if)# exit
Router(config-pim-default-ipv4)# interface TenGigE 0/0/0/4.101
Router(config-pim-ipv4-if)# bfd minimum-interval 50
Router(config-pim-ipv4-if)# bfd fast-detect
Router(config-pim-ipv4-if)# bfd multiplier 3
Router(config-pim-ipv4-if)# exit
Router(config-pim-default-ipv4)# interface Bundle-Ether 101
Router(config-pim-ipv4-if)# bfd minimum-interval 50
Router(config-pim-ipv4-if)# bfd fast-detect
Router(config-pim-ipv4-if)# bfd multiplier 3
Router(config-pim-ipv4-if)# exit
Router(config-pim-default-ipv4)# commit
```

### Running Configuration

```
router pim
 address-family ipv4
  interface HundredGigE 0/1/0/1
```

```

bfd minimum-interval 10
bfd fast-detect
bfd multiplier 3
!
interface TenGigE 0/0/0/4
bfd minimum-interval 50
bfd fast-detect
bfd multiplier 3
!
interface TenGigE 0/0/0/4.101
bfd minimum-interval 50
bfd fast-detect
bfd multiplier 3
!
!
!
!
!
```

## Verification

The show outputs given in the following section display the details of the configuration of the PIM BFD, and the status of their configuration.

```
Router# show bfd session
```

Wed Nov 22 08:27:35.952 PST

| Interface<br>H/W | NPU      | Dest Addr    | Local det time(int*mult) |               | State | Echo  | Async |       |
|------------------|----------|--------------|--------------------------|---------------|-------|-------|-------|-------|
| -----            | -----    | -----        | -----                    | -----         | ----- | ----- | ----- | ----- |
| Hu0/0/1/3        | 0/0/CPU0 | 10.12.12.2   | 0s (0s*0)                | 90ms (30ms*3) | UP    |       | Yes   |       |
| Hu0/0/1/2        | 0/0/CPU0 | 10.12.12.2   | 0s (0s*0)                | 90ms (30ms*3) | UP    |       | Yes   |       |
| Hu0/0/1/1        | 0/0/CPU0 | 10.18.18.2   | 0s (0s*0)                | 90ms (30ms*3) | UP    |       | Yes   |       |
| Te0/0/0/4.101    | 0/0/CPU0 | 10.112.112.2 | 0s (0s*0)                | 90ms (30ms*3) | UP    |       | Yes   |       |
| BE101            |          | 10.18.18.2   | n/a                      | n/a           | UP    |       | No    | n/a   |
| BE102            |          | 10.12.12.2   | n/a                      | n/a           | UP    |       | No    | n/a   |

```
Router# show bfd client
```

| Name              | Node       | Num sessions |
|-------------------|------------|--------------|
| L2VPN_ATOM        | 0/RP0/CPU0 | 0            |
| MPLS-TR           | 0/RP0/CPU0 | 0            |
| bgp-default       | 0/RP0/CPU0 | 0            |
| bundlemgr_distrib | 0/RP0/CPU0 | 14           |
| isis-1            | 0/RP0/CPU0 | 0            |
| object_tracking   | 0/RP0/CPU0 | 0            |
| pim6              | 0/RP0/CPU0 | 0            |

```
pim          0/RP0/CPU0 0
service-layer 0/RP0/CPU0 0
```

## PIM Bootstrap Router

The PIM bootstrap router (BSR) provides a fault-tolerant, automated RP discovery and distribution mechanism that simplifies the Auto-RP process. This feature is enabled by default allowing routers to dynamically learn the group-to-RP mappings.

PIM uses the BSR to discover and announce RP-set information for each group prefix to all the routers in a PIM domain. This is the same function accomplished by Auto-RP, but the BSR is part of the PIM specification. The BSR mechanism interoperates with Auto-RP on Cisco routers.

To avoid a single point of failure, you can configure several candidate BSRs in a PIM domain. A BSR is elected among the candidate BSRs automatically.

Candidates use bootstrap messages to discover which BSR has the highest priority. The candidate with the highest priority sends an announcement to all PIM routers in the PIM domain that it is the BSR.

Routers that are configured as candidate RPs unicast to the BSR the group range for which they are responsible. The BSR includes this information in its bootstrap messages and disseminates it to all PIM routers in the domain. Based on this information, all routers are able to map multicast groups to specific RPs. As long as a router is receiving the bootstrap message, it has a current RP map.

## Configuring PIM Bootstrap Router

### Configuration Example

Configures the router as a candidate BSR with a hash mask length of 30:

```
Router#config
Router(config)#router pim
Router(config-pim-default-ipv4)#bsr candidate-bsr 1.1.1.1 hash-mask-len 30 priority 1
Router(config-pim-default-ipv4-if)#commit
```

Configures the router to advertise itself as a candidate rendezvous point to the BSR in its PIM domain. Access list number 4 specifies the prefix associated with the candidate rendezvous point address 1.1.1.1. This rendezvous point is responsible for the groups with the prefix 239.

```
Router#config
Router(config)#router pim
Router(config-pim-default-ipv4)#bsr candidate-rp 1.1.1.1 group-list 4 priority 192 interval 60

Router(config-pim-default-ipv4)#exit
Router(config)#ipv4 access-list 4
Router(config-ipv4-acl)#permit ipv4 any 239.0.0.0 0.255.255.255
Router(config-ipv4-acl)#commit
```

### Running Configuration

```
Router#show run router pim
router pim
address-family ipv4
  bsr candidate-bsr 1.1.1.1 hash-mask-len 30 priority 1
  bsr candidate-rp 1.1.1.1 group-list 4 priority 192 interval 60
```

### Verification

```
Router#show pim rp mapping
PIM Group-to-RP Mappings
Group(s) 239.0.0.0/8
  RP 1.1.1.1 (?), v2
    Info source: 1.1.1.1 (?), elected via bsr, priority 192, holdtime 150
    Uptime: 00:02:50, expires: 00:01:54

Router#show pim bsr candidate-rp
PIM BSR Candidate RP Info
Cand-RP      mode  scope priority uptime      group-list
1.1.1.1      BD    16      192      00:04:06    4

Router#show pim bsr election
PIM BSR Election State
Cand/Elect-State  Uptime  BS-Timer  BSR                                     C-BSR
Elected/Accept-Pref 00:03:49 00:00:25 1.1.1.1 [1, 30]                       1.1.1.1 [1, 30]
```

## Reverse Path Forwarding

Reverse-path forwarding (RPF) is an algorithm used for forwarding multicast datagrams. It functions as follows:

- If a router receives a datagram on an interface it uses to send unicast packets to the source, the packet has arrived on the RPF interface.
- If the packet arrives on the RPF interface, a router forwards the packet out the interfaces present in the outgoing interface list of a multicast routing table entry.
- If the packet does not arrive on the RPF interface, the packet is silently discarded to prevent loops.

PIM uses both source trees and RP-rooted shared trees to forward datagrams; the RPF check is performed differently for each, as follows:

- If a PIM router has an (S,G) entry present in the multicast routing table (a source-tree state), the router performs the RPF check against the IP address of the source for the multicast packet.
- If a PIM router has no explicit source-tree state, this is considered a shared-tree state. The router performs the RPF check on the address of the RP, which is known when members join the group.

Sparse-mode PIM uses the RPF lookup function to determine where it needs to send joins and prunes. (S,G) joins (which are source-tree states) are sent toward the source. (\*,G) joins (which are shared-tree states) are sent toward the RP.

## Setting the Reverse Path Forwarding Statically

### Configuration Example

The following example configures the static RPF rule for IP address 10.0.0.1:

```
Router#configure
Router(config)#multicast-routing
Router(config-mcast)#address-family ipv4
Router(config-mcast)#static-rpf 10.0.0.1 32 TenGigE 0/0/0/1 192.168.0.2
Router(config-mcast)#commit
```

### Running Configuration

```
multicast-routing
  address-family ipv4
    static-rpf 10.10.10.2 32 TenGigE0/0/0/1 192.168.0.2
```

### Verification

Verify that RPF is chosen according to the static RPF configuration for 10.10.10.2

```
Router#show pim rpf
Table: IPv4-Unicast-default
* 10.10.10.2/32 [0/0]
  via GigabitEthernet0/0/0/1 with rpf neighbor 192.168.0.2
```

## RPF Vector Encoding Using IETF Standard

RPF vector is a PIM proxy that lets core routers without RPF information forward join and prune messages for external sources (for example, a MPLS-based BGP-free core, where the MPLS core router is without external routes learned from BGP). The RPF vector encoding is now compatible with the new IETF encoding. The new IETF standard encodes PIM messages using PIM Hello option 26.

## Configuring RPF Vector (IETF Standard Encoding)

This example shows how to enable RPF encoding using IETF standard:

```
(config)# router pim
(config-pim-default-ipv4)# address-family ipv4
(config-pim-default-ipv4)# rpf-vector use-standard-encoding
!
(config)# multicast-routing
(config-mcast)# interface TenGigE0/0/0/0
(config-mcast)# interface TenGigE0/0/0/2
```

### Verification

```
Router#show pim neighbor
Tue Apr 17 10:15:40.961 PDT

PIM neighbors in VRF default
Flag: B - Bidir capable, P - Proxy capable, DR - Designated Router,
      E - ECMP Redirect capable
      * indicates the neighbor created for this router
```

| Neighbor Address   | Interface             | Uptime          | Expires         | DR pri        | Flags        |
|--------------------|-----------------------|-----------------|-----------------|---------------|--------------|
| 25.25.25.1         | TenGigE0/0/0/0        | 1w3d            | 00:01:36        | 1             | B P          |
| <b>25.25.25.2*</b> | <b>TenGigE0/0/0/0</b> | <b>1w3d</b>     | <b>00:01:41</b> | <b>1 (DR)</b> | <b>B P E</b> |
| 32.32.32.2*        | TenGigE0/0/0/2        |                 |                 |               |              |
| 1w4d               |                       | 00:01:40        | 1               |               | B P E        |
| <b>32.32.32.3</b>  | <b>TenGigE0/0/0/2</b> |                 |                 |               |              |
| <b>1w4d</b>        |                       | <b>00:01:42</b> | <b>1 (DR)</b>   |               | <b>B P</b>   |

In the above output, you can see "P" tag on the multicast enabled interfaces.

# PIM-Source Specific Multicast

When PIM is used in SSM mode, multicast routing is easier to manage. This is because RPs (rendezvous points) are not required and therefore, no shared trees (\*,G) are built.

There is no specific IETF document defining PIM-SSM. However, RFC4607 defines the overall SSM behavior.

In the rest of this document, we use the term PIM-SSM to describe PIM behavior and configuration when SSM is used.

PIM in Source-Specific Multicast operation uses information found on source addresses for a multicast group provided by receivers and performs source filtering on traffic.

- By default, PIM-SSM operates in the 232.0.0.0/8 multicast group range for IPv4 and FF3x::/32 for IPv6. To configure these values, use the **ssm range** command.
- If SSM is deployed in a network already configured for PIM-SM, only the last-hop routers must be upgraded with Cisco IOS XR Software that supports the SSM feature.
- No MSDP SA messages within the SSM range are accepted, generated, or forwarded.
- SSM can be disabled using the **ssm disable** command.
- The **ssm allow-override** command allows SSM ranges to be overridden by more specific ranges.

In many multicast deployments where the source is known, protocol-independent multicast-source-specific multicast (PIM-SSM) mapping is the obvious multicast routing protocol choice to use because of its simplicity. Typical multicast deployments that benefit from PIM-SSM consist of entertainment-type solutions like the ETTH space, or financial deployments that completely rely on static forwarding.

In SSM, delivery of data grams is based on (S,G) channels. Traffic for one (S,G) channel consists of datagrams with an IP unicast source address S and the multicast group address G as the IP destination address. Systems receive traffic by becoming members of the (S,G) channel. Signaling is not required, but receivers must subscribe or unsubscribe to (S,G) channels to receive or not receive traffic from specific sources. Channel subscription signaling uses IGMP to include mode membership reports, which are supported only in Version 3 of IGMP (IGMPv3).

To run SSM with IGMPv3, SSM must be supported on the multicast router, the host where the application is running, and the application itself. Cisco IOS XR Software allows SSM configuration for an arbitrary subset of the IP multicast address range 224.0.0.0 through 239.255.255.255.

When an SSM range is defined, existing IP multicast receiver applications do not receive any traffic when they try to use addresses in the SSM range, unless the application is modified to use explicit (S,G) channel subscription.

## Benefits of PIM-SSM over PIM-SM

PIM-SSM is derived from PIM-SM. However, whereas PIM-SM allows for the data transmission of all sources sending to a particular group in response to PIM join messages, the SSM feature forwards traffic to receivers only from those sources that the receivers have explicitly joined. Because PIM joins and prunes are sent directly towards the source sending traffic, an RP and shared trees are unnecessary and are disallowed. SSM is used to optimize bandwidth utilization and deny unwanted Internet broad cast traffic. The source is provided by interested receivers through IGMPv3 membership reports.

## IGMPv2

To support IGMPv2, SSM mapping configuration must be added while configuring IGMP to match certain sources to group range.

### Configuring Example

Configures the access-list (mc1):

```
Router#configure
Router(config)#ipv4 access-list mc1
Router(config-ipv4-acl)#permit ipv4 any 232.1.1.0 0.0.0.255
Router(config-ipv4-acl)#commit
```

Configures the multicast source (1.1.1.1) as part of a set of sources that map SSM groups described by the specified access-list (mc1):

```
Router#configure
Router(config)#router igmp
Router(config-igmp)#ssm map static 1.1.1.1 mc1
Router(config-igmp)#commit
```

### Running Configuration

```
Router#show run router igmp
router igmp
ssm map static 1.1.1.1 mc1
```

## Multipath Option

The multipath option is available under `router pim` configuration mode. After multipath option is enabled, SSM selects different path to reach same destination instead of choosing common path. The multipath option helps load balance the SSM traffic.

### Configuring Multipath Option

```
Router#configure
Router(config)#router pim address-family ipv4
Router(config-pim-default-ipv4)#multipath hash source
Router(config-pim-default-ipv4)#commit
```

### Running Configuration

```
Router#show running router pim
router pim
address-family ipv4
dr-priority 100
multipath hash source /*SSM traffic takes different path to reach same destination
based on source hash value.*/
```

### Verification

The Bundle-Ether132 and TenGigE0/4/0/18/0.132 are two paths to reach the destination router Turnin-56. Since we have enabled multipath option, the source has two IP addresses 50.11.30.12 and 50.11.30.11. The Multicast traffic from two sources take two different paths Bundle-Ether132 and TenGigE0/4/0/18/0.132 to reach same destination.



This show run output shows that Bundle-Ether132 and TenGigE0/4/0/18/0.132 are connected to same destination router Turin-56:

```
Router#show run int TenGigE0/1/0/6/3.132
interface TenGigE0/1/0/6/3.132
  description Connected to Turin-56 ten0/0/0/19.132
  ipv4 address 13.0.2.1 255.255.255.240
  ipv6 address 2606::13:0:2:1/120
  encapsulation dot1q 132
!

Router#show run int bel32
interface Bundle-Ether132
  description Bundle between Fretta-56 and Turin-56
  ipv4 address 28.0.0.1 255.255.255.240
  ipv6 address 2606::28:0:0:1/120
  load-interval 30

Router#show mrib route 50.11.30.11 detail

IP Multicast Routing Information Base
Entry flags: L - Domain-Local Source, E - External Source to the Domain,
             C - Directly-Connected Check, S - Signal, IA - Inherit Accept,
             IF - Inherit From, D - Drop, ME - MDT Encap, EID - Encap ID,
             MD - MDT Decap, MT - MDT Threshold Crossed, MH - MDT interface handle
             CD - Conditional Decap, MPLS - MPLS Decap, EX - Extranet
             MoFE - MoFRR Enabled, MoFS - MoFRR State, MoFP - MoFRR Primary
             MoFB - MoFRR Backup, RPFID - RPF ID Set, X - VXLAN
Interface flags: F - Forward, A - Accept, IC - Internal Copy,
                NS - Negate Signal, DP - Don't Preserve, SP - Signal Present,
                II - Internal Interest, ID - Internal Disinterest, LI - Local Interest,
                LD - Local Disinterest, DI - Decapsulation Interface
                EI - Encapsulation Interface, MI - MDT Interface, LVIF - MPLS Encap,
                EX - Extranet, A2 - Secondary Accept, MT - MDT Threshold Crossed,
                MA - Data MDT Assigned, LMI - mLDP MDT Interface, TMI - P2MP-TE MDT Interface
                IRMI - IR MDT Interface

(50.11.30.11,225.255.11.1) Ver: 0x523cc294 RPF nbr: 50.11.30.11 Flags: L RPF, FGID: 11453,
-1, -1
Up: 4d15h
Incoming Interface List
  HundredGigE0/4/0/10.1130 Flags: A, Up: 4d15h
Outgoing Interface List
  FortyGigE0/1/0/5 Flags: F NS, Up: 4d15h
  TenGigE0/4/0/6/0 Flags: F NS, Up: 4d15h
  TenGigE0/1/0/6/3.132 Flags: F NS, Up: 4d15h
  TenGigE0/4/0/18/0.122 Flags: F NS, Up: 4d15h

Router#show mrib route 50.11.30.12 detail

IP Multicast Routing Information Base
Entry flags: L - Domain-Local Source, E - External Source to the Domain,
             C - Directly-Connected Check, S - Signal, IA - Inherit Accept,
             IF - Inherit From, D - Drop, ME - MDT Encap, EID - Encap ID,
             MD - MDT Decap, MT - MDT Threshold Crossed, MH - MDT interface handle
             CD - Conditional Decap, MPLS - MPLS Decap, EX - Extranet
             MoFE - MoFRR Enabled, MoFS - MoFRR State, MoFP - MoFRR Primary
             MoFB - MoFRR Backup, RPFID - RPF ID Set, X - VXLAN
Interface flags: F - Forward, A - Accept, IC - Internal Copy,
                NS - Negate Signal, DP - Don't Preserve, SP - Signal Present,
                II - Internal Interest, ID - Internal Disinterest, LI - Local Interest,
                LD - Local Disinterest, DI - Decapsulation Interface
                EI - Encapsulation Interface, MI - MDT Interface, LVIF - MPLS Encap,
                EX - Extranet, A2 - Secondary Accept, MT - MDT Threshold Crossed,
                MA - Data MDT Assigned, LMI - mLDP MDT Interface, TMI - P2MP-TE MDT Interface
```

```

IRMI - IR MDT Interface

(50.11.30.12,226.255.12.1) Ver: 0x5fe02e5b RPF nbr: 50.11.30.12 Flags: L RPF, FGID: 12686,
-1, -1
Up: 4d15h
Incoming Interface List
  HundredGigE0/4/0/10.1130 Flags: A, Up: 4d15h
Outgoing Interface List
  Bundle-Ether121 Flags: F NS, Up: 4d15h
  Bundle-Ether132 Flags: F NS, Up: 4d15h
  FortyGigE0/1/0/5 Flags: F NS, Up: 4d15h
  TenGigE0/4/0/6/0.117 Flags: F NS, Up: 4d15h

```

## Configuring PIM-SSM

### Configuration Example

Configures SSM default range for the IPv4 address range defined by access list 4.

```

Router#config
Router(config)#ipv4 access-list 4
Router(config-ipv4-acl)#permit ipv4 any 224.2.151.0 0.0.0.255
Router(config-ipv4-acl)#exit
Router(config)#multicast-routing
Router(config-mcast)#address-family ipv4
Router(config-mcast-default-ipv4)#ssm range 4
Router(config-mcast-default-ipv4)#commit
Router(config-mcast-default-ipv4)#end

Router#config
Router(config)#ipv6 access-list 6
Router(config-ipv6-acl)#permit ipv6 any ff30:0:0:2::/32
Router(config-ipv6-acl)#exit
Router(config)#multicast-routing
Router(config-mcast)#address-family ipv6
Router(config-mcast-default-ipv6)#ssm range 6
Router(config-mcast-default-ipv6)#commit
Router(config-mcast-default-ipv6)#end

```

### Running Configuration

```

Router#show running multicast-routing
multicast-routing
  address-family ipv4
    ssm range 4
  interface all enable
!

Router#show running multicast-routing
multicast-routing
  address-family ipv6
    ssm range 6
  interface all enable
!

```

### Verification

Verify if the SSM range is configured according to the set parameters:

```

Router#show access-lists 4
ipv4 access-list 4
  10 permit ipv4 any 224.2.151.0 0.0.0.255

```

```
*/Verify if the SSM is configured for 224.2.151.0/24/*:
```

```
Router#show pim group-map
IP PIM Group Mapping Table
(* indicates group mappings being used)
Group Range      Proto Client  Groups RP address  Info
224.0.1.39/32*   DM    perm    1      0.0.0.0
224.0.1.40/32*   DM    perm    1      0.0.0.0
224.0.0.0/24*    NO    perm    0      0.0.0.0
224.2.151.0/24*  SSM   config  0      0.0.0.0
```

## Configuring PIM Parameters

To configure PIM-specific parameters, the router pim configuration mode is used. The default configuration prompt is for IPv4 and will be seen as config-pim-default-ipv4. To ensure the election of a router as PIM DR on a LAN segment, use the **dr-priority** command. The router with the highest DR priority will win the election. By default, at a preconfigured threshold, the last hop router can join the shortest path tree to receive multicast traffic. To change this behavior, use the command **spt-threshold infinity** under the router pim configuration mode. This will result in the last hop router permanently joining the shared tree. The frequency at which a router sends PIM hello messages to its neighbors can be configured by the hello-interval command. By default, PIM hello messages are sent once every 30 seconds. If the hello-interval is configured under router pim configuration mode, all the interfaces with PIM enabled will inherit this value. To change the hello interval on the interface, use the **hello-interval** command under interface configuration mode, as follows:

### Configuration Example

```
Router#configure
Router(config)#router pim
Router(config-pim-default)#address-family ipv4
Router(config-pim-default-ipv4)#dr-priority 2
Router(config-pim-default-ipv4)#spt-threshold infinity
Router(config-pim-default-ipv4)#interface TenGigE0/0/0/1
Router(config-pim-ipv4-if)#dr-priority 4
Router(config-pim-ipv4-if)#hello-interval 45
Router(config-pim-ipv4-if)#commit
```

### Running Configuration

```
Router#show run router pim
router pim
address-family ipv4
dr-priority 2
spt-threshold infinity
interface TenGigE0/0/0/1
dr-priority 4
hello-interval 45
```

### Verification

Verify if the parameters are set according to the configured values:

```
Router#show pim interface te0/0/0/1
PIM interfaces in VRF default
Address      Interface      PIM  Nbr  Hello  DR    DR Count Intvl
Prior
100.1.1.1    TenGigE0/0/0/1  on   1    45    4     this system
```

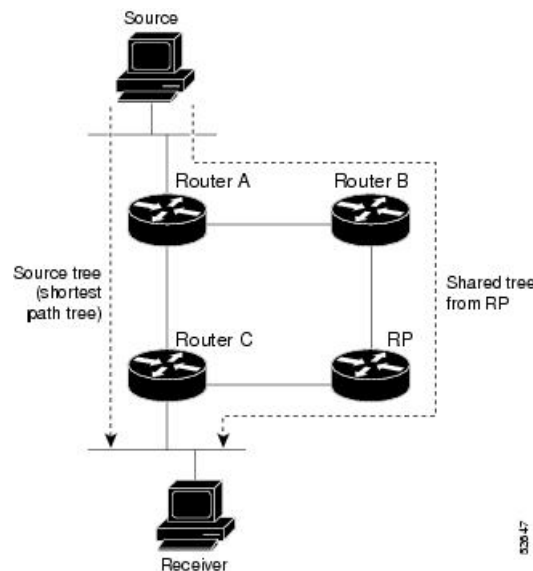
## PIM-Sparse Mode

Typically, PIM in sparse mode (PIM-SM) operation is used in a multicast network when relatively few routers are involved in each multicast. Routers do not forward multicast packets for a group, unless there is an explicit request for traffic. Requests are accomplished using PIM join messages, which are sent hop by hop toward the root node of the tree. The root node of a tree in PIM-SM is the rendezvous point (RP) in the case of a shared tree or the first-hop router that is directly connected to the multicast source in the case of a shortest path tree (SPT). The RP keeps track of multicast groups, and the sources that send multicast packets are registered with the RP by the first-hop router of the source.

As a PIM join travels up the tree, routers along the path set up the multicast forwarding state so that the requested multicast traffic is forwarded back down the tree. When multicast traffic is no longer needed, a router sends a PIM prune message up the tree toward the root node to prune (or remove) the unnecessary traffic. As this PIM prune travels hop by hop up the tree, each router updates its forwarding state appropriately. Ultimately, the forwarding state associated with a multicast group or source is removed. Additionally, if prunes are not explicitly sent, the PIM state will timeout and be removed in the absence of any further join messages.

This image shows IGMP and PIM-SM operating in a multicast environment.

**Figure 1: Shared Tree and Source Tree (Shortest Path Tree)**



In PIM-SM, the rendezvous point (RP) is used to bridge sources sending data to a particular group with receivers sending joins for that group. In the initial set up of state, interested receivers receive data from senders to the group across a single data distribution tree rooted at the RP. This type of distribution tree is called a shared tree or rendezvous point tree (RPT) as illustrated in Figure 4: Shared Tree and Source Tree (Shortest Path Tree), above. Data from senders is delivered to the RP for distribution to group members joined to the shared tree.

Unless the command is configured, this initial state gives way as soon as traffic is received on the leaf routers (designated router closest to the host receivers). When the leaf router receives traffic from the RP on the RPT, the router initiates a switch to a data distribution tree rooted at the source sending traffic. This type of distribution tree is called a shortest path tree or source tree. By default, the Cisco IOS XR Software switches to a source tree when it receives the first data packet from a source.

The following process describes the move from shared tree to source tree in more detail:

1. Receiver joins a group; leaf Router C sends a join message toward RP.
2. RP puts link to Router C in its outgoing interface list.
3. Source sends data; Router A encapsulates data in Register and sends it to RP.
4. RP forwards data down the shared tree to Router C and sends a join message toward Source. At this point, data may arrive twice at the RP, once encapsulated and once natively.
5. When data arrives natively (unencapsulated) at RP, RP sends a register-stop message to Router A.
6. By default, receipt of the first data packet prompts Router C to send a join message toward Source.
7. When Router C receives data on (S,G), it sends a prune message for Source up the shared tree.
8. RP deletes the link to Router C from outgoing interface of (S,G). RP triggers a prune message toward Source.
9. Join and prune messages are sent for sources and RPs. They are sent hop by hop and are processed by each PIM router along the path to the source or RP. Register and register-stop messages are not sent hop by hop. They are exchanged using direct unicast communication between the designated router that is directly connected to a source and the RP for the group.



---

**Note** The **spt-threshold infinity** command lets you configure the router so that it never switches to the shortest path tree (SPT).

---

## Restrictions and Usage Guidelines

This section describes the restrictions and guidelines related to the PIM protocol.

The following restrictions and guidelines apply for the Protocol Independent Multicast-Sparse Mode (PIM-SM) protocol:

- IPv6 is not supported.
- Auto RP is not supported.
- BSR is not supported in profile 14.

## Multicast Source Discovery Protocol

Multicast Source Discovery Protocol (MSDP) is a mechanism to connect multiple PIM sparse-mode domains. MSDP allows multicast sources for a group to be known to all rendezvous points (RPs) in different domains. Each PIM-SM domain uses its own RPs and need not depend on RPs in other domains.

An RP in a PIM-SM domain has MSDP peering relationships with MSDP-enabled routers in other domains. Each peering relationship occurs over a TCP connection, which is maintained by the underlying routing system.

MSDP speakers exchange messages called Source Active (SA) messages. When an RP learns about a local active source, typically through a PIM register message, the MSDP process encapsulates the register in an SA message and forwards the information to its peers. The message contains the source and group information for the multicast flow, as well as any encapsulated data. If a neighboring RP has local joiners for the multicast group, the RP installs the S, G route, forwards the encapsulated data contained in the SA message, and sends PIM joins back towards the source. This process describes how a multicast path can be built between domains.



**Note** Although you should configure BGP or Multiprotocol BGP for optimal MSDP interdomain operation, this is not considered necessary in the Cisco IOS XR Software implementation. For information about how BGP or Multiprotocol BGP may be used with MSDP, see the MSDP RPF rules listed in the Multicast Source Discovery Protocol (MSDP), Internet Engineering Task Force (IETF) Internet draft.

## Interconnecting PIM-SM Domains with MSDP

To set up an MSDP peering relationship with MSDP-enabled routers in another domain, you configure an MSDP peer to the local router.

If you do not want to have or cannot have a BGP peer in your domain, you could define a default MSDP peer from which to accept all Source-Active (SA) messages.

Finally, you can change the Originator ID when you configure a logical RP on multiple routers in an MSDP mesh group.

### Before you begin

You must configure MSDP default peering, if the addresses of all MSDP peers are not known in BGP or multiprotocol BGP.

### Procedure

|               | Command or Action  | Purpose   |
|---------------|--|---|
| <b>Step 1</b> | <b>configure</b>   |   |
| <b>Step 2</b> | <b>interface</b> <i>type interface-path-id</i><br><b>Example:</b><br><pre>RP/0/RP0/CPU0:router(config)# interface loopback 0</pre> | (Optional) Enters interface configuration mode to define the IPv4 address for the interface.<br><br><b>Note</b> This step is required if you specify an interface type and number whose primary address becomes the source IP address for the TCP connection. |
| <b>Step 3</b> | <b>ipv4 address</b> <i>address mask</i><br><b>Example:</b>   | (Optional) Defines the IPv4 address for the interface.  |

|               | Command or Action  | Purpose   |
|---------------|--|---|
|               | <pre>RP/0/RP0/CPU0:router(config-if)# ipv4 address 10.0.1.3 255.255.255.0</pre>  | <b>Note</b> This step is required only if you specify an interface type and number whose primary address becomes the source IP address for the TCP connection. See optional for information about configuring the <b>connect-source</b> command.  |
| <b>Step 4</b> | <b>exit</b><br><b>Example:</b><br><pre>RP/0/RP0/CPU0:router(config-if)# end</pre>  | Exits interface configuration mode.   |
| <b>Step 5</b> | <b>router msdp</b><br><b>Example:</b><br><pre>RP/0/RP0/CPU0:router(config)# router msdp</pre>  | Enters MSDP protocol configuration mode.  |
| <b>Step 6</b> | <b>default-peer ip-address [prefix-list list]</b><br><b>Example:</b><br><pre>RP/0/RP0/CPU0:router(config-msdp)# default-peer 172.23.16.0</pre>       | (Optional) Defines a default peer from which to accept all MSDP SA messages.  |
| <b>Step 7</b> | <b>originator-id type interface-path-id</b><br><b>Example:</b><br><pre>RP/0/RP0/CPU0:router(config-msdp)# originator-id GigabitEthernet0/1/1/0</pre> | (Optional) Allows an MSDP speaker that originates a (Source-Active) SA message to use the IP address of the interface as the RP address in the SA message.  |
| <b>Step 8</b> | <b>peer peer-address</b><br><b>Example:</b><br><pre>RP/0/RP0/CPU0:router(config-msdp)# peer 172.31.1.2</pre>   | Enters MSDP peer configuration mode and configures an MSDP peer. <ul style="list-style-type: none"> <li>• Configure the router as a BGP neighbor.</li> <li>• If you are also BGP peering with this MSDP peer, use the same IP address for MSDP and BGP. You are not required to run BGP or multiprotocol BGP with the MSDP peer, as long as there is a BGP or multiprotocol BGP path between the MSDP peers.</li> </ul> |

|                | Command or Action  | Purpose   |
|----------------|--|---|
| <b>Step 9</b>  | <b>connect-source</b> <i>type interface-path-id</i><br><b>Example:</b><br><pre>RP/0/RP0/CPU0:router(config-msdp-peer)# connect-source loopback 0</pre> | (Optional) Configures a source address used for an MSDP connection.     |
| <b>Step 10</b> | <b>mesh-group</b> <i>name</i><br><b>Example:</b><br><pre>RP/0/RP0/CPU0:router(config-msdp-peer)# mesh-group internal</pre>                             | (Optional) Configures an MSDP peer to be a member of a mesh group.      |
| <b>Step 11</b> | <b>remote-as</b> <i>as-number</i><br><b>Example:</b><br><pre>RP/0/RP0/CPU0:router(config-msdp-peer)# remote-as 250</pre>                               | (Optional) Configures the remote autonomous system number of this peer. |
| <b>Step 12</b> | <b>commit</b>  |   |
| <b>Step 13</b> | <b>show msdp [ipv4] globals</b><br><b>Example:</b><br><pre>RP/0/RP0/CPU0:router# show msdp globals</pre>   | Displays the MSDP global variables.                                     |
| <b>Step 14</b> | <b>show msdp [ipv4] peer [peer-address]</b><br><b>Example:</b><br><pre>RP/0/RP0/CPU0:router# show msdp peer 172.31.1.2</pre>                           | Displays information about the MSDP peer.                               |
| <b>Step 15</b> | <b>show msdp [ipv4] rpf rpf-address</b><br><b>Example:</b><br><pre>RP/0/RP0/CPU0:router# show msdp rpf 172.16.10.13</pre>                              | Displays the RPF lookup.  |

## Controlling Source Information on MSDP Peer Routers

Your MSDP peer router can be customized to control source information that is originated, forwarded, received, cached, and encapsulated.



When originating Source-Active (SA) messages, you can control to whom you will originate source information, based on the source that is requesting information.

When forwarding SA messages you can do the following:

- Filter all source/group pairs
- Specify an extended access list to pass only certain source/group pairs
- Filter based on match criteria in a route map

When receiving SA messages you can do the following:

- Filter all incoming SA messages from an MSDP peer
- Specify an extended access list to pass certain source/group pairs
- Filter based on match criteria in a route map

In addition, you can use time to live (TTL) to control what data is encapsulated in the first SA message for every source. For example, you could limit internal traffic to a TTL of eight hops. If you want other groups to go to external locations, you send those packets with a TTL greater than eight hops.

By default, MSDP automatically sends SA messages to peers when a new member joins a group and wants to receive multicast traffic. You are no longer required to configure an SA request to a specified MSDP peer.

### Procedure

|               | Command or Action   | Purpose  |
|---------------|---|--|
| <b>Step 1</b> | <b>configure</b>  |  |
| <b>Step 2</b> | <b>router msdp</b><br><br><b>Example:</b><br><br>RP/0/RP0/CPU0:router(config)# router msdp  | Enters MSDP protocol configuration mode.   |
| <b>Step 3</b> | <b>sa-filter {in   out} [list access-list-name]<br/>[rp-list access-list-name]</b><br><br><b>Example:</b><br><br>RP/0/RP0/CPU0:router(config-msdp)#<br>sa-filter out list 100 | Configures an incoming or outgoing filter list for messages received from the specified MSDP peer. <ul style="list-style-type: none"> <li>• If you specify both the <b>list</b> and <b>rp-list</b> keywords, all conditions must be true to pass any source, group (S, G) pairs in outgoing Source-Active (SA) messages.</li> <li>• You must configure the <b>ipv4 access-list</b> command in <a href="#">Step 7, on page 20</a>.</li> <li>• If all match criteria are true, a <b>permit</b> from the route map passes routes through the filter. A <b>deny</b> filters routes.</li> </ul> |

|               | Command or Action   | Purpose   |
|---------------|---|---|
| <b>Step 4</b> | <b>cache-sa-state</b> [ <i>list access-list-name</i> ] [ <i>rp-list access-list-name</i> ]<br><br><b>Example:</b><br><br>RP/0/RP0/CPU0:router(config-msdp)#<br>cache-sa-state list 100  | Creates and caches source/group pairs from received Source-Active (SA) messages and controls pairs through access lists.  |
| <b>Step 5</b> | <b>ttl-threshold</b> <i>tvl-value</i><br><br><b>Example:</b><br><br>RP/0/RP0/CPU0:router(config-msdp)#<br>ttl-threshold 8   | (Optional) Limits which multicast data is sent in SA messages to an MSDP peer. <ul style="list-style-type: none"> <li>Only multicast packets with an IP header TTL greater than or equal to the <i>tvl-value</i> argument are sent to the MSDP peer specified by the IP address or name.</li> <li>Use this command if you want to use TTL to examine your multicast data traffic. For example, you could limit internal traffic to a TTL of 8. If you want other groups to go to external locations, send those packets with a TTL greater than 8.</li> <li>This example configures a TTL threshold of eight hops.</li> </ul> |
| <b>Step 6</b> | <b>exit</b><br><br><b>Example:</b><br><br>RP/0/RP0/CPU0:router(config-msdp)# exit   | Exits the current configuration mode.   |
| <b>Step 7</b> | <b>ipv4 access-list</b> <i>name</i> [ <i>sequence-number</i> ]<br><b>permit</b> <i>source</i> [ <i>source-wildcard</i> ]<br><br><b>Example:</b><br><br>RP/0/RP0/CPU0:router(config)# ipv4<br>access-list 100 20 permit 239.1.1.1<br>0.0.0.0 | Defines an IPv4 access list to be used by SA filtering. <ul style="list-style-type: none"> <li>In this example, the access list 100 permits multicast group 239.1.1.1.</li> <li>The <b>ipv4 access-list</b> command is required if the keyword <b>list</b> is configured for SA filtering in <a href="#">Step 3, on page 19</a>.</li> </ul>   |
| <b>Step 8</b> | <b>commit</b>   |   |

## Designated Routers

Cisco routers use PIM-SM to forward multicast traffic and follow an election process to select a designated router (DR) when there is more than one router on a LAN segment.

The designated router is responsible for sending PIM register and PIM join and prune messages toward the RP to inform it about host group membership.

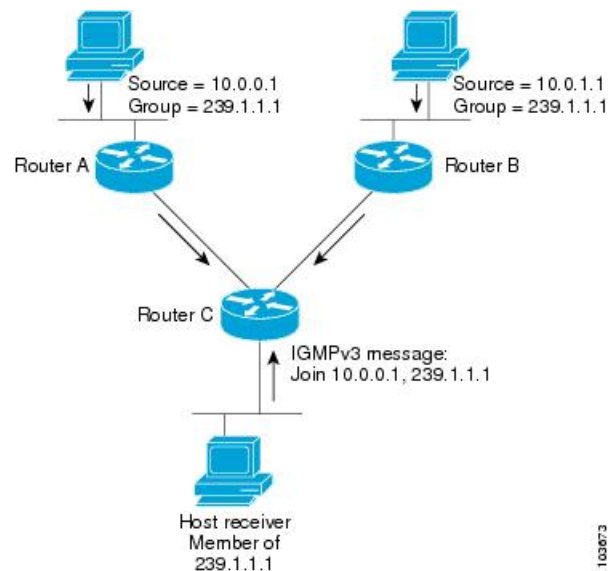
If there are multiple PIM-SM routers on a LAN, a designated router must be elected to avoid duplicating multicast traffic for connected hosts. The PIM router with the highest IP address becomes the DR for the LAN unless you choose to force the DR election by use of the **dr-priority** command. The DR priority option allows you to specify the DR priority of each router on the LAN segment (default priority = 1) so that the router with the highest priority is elected as the DR. If all routers on the LAN segment have the same priority, the highest IP address is again used as the tiebreaker.



**Note** DR election process is required only on multi access LANs. The last-hop router directly connected to the host is the DR.

The figure "Designated Router Election on a Multiaccess Segment", below illustrates what happens on a multi access segment. Router A (10.0.0.253) and Router B (10.0.0.251) are connected to a common multi access Ethernet segment with Host A (10.0.0.1) as an active receiver for Group A. As the Explicit Join model is used, only Router A, operating as the DR, sends joins to the RP to construct the shared tree for Group A. If Router B were also permitted to send (\*,G) joins to the RP, parallel paths would be created and Host A would receive duplicate multicast traffic. When Host A begins to source multicast traffic to the group, the DR's responsibility is to send register messages to the RP. Again, if both routers were assigned the responsibility, the RP would receive duplicate multicast packets.

**Figure 2: Designated Router Election on a Multiaccess Segment**



If the DR fails, the PIM-SM provides a way to detect the failure of Router A and to elect a failover DR. If the DR (Router A) were to become inoperable, Router B would detect this situation when its neighbor adjacency with Router A timed out. Because Router B has been hearing IGMP membership reports from Host A, it already has IGMP state for Group A on this interface and immediately sends a join to the RP when it becomes the new DR. This step reestablishes traffic flow down a new branch of the shared tree using Router B. Additionally, if Host A were sourcing traffic, Router B would initiate a new register process immediately after receiving the next multicast packet from Host A. This action would trigger the RP to join the SPT to Host A, using a new branch through Router B.



**Note** Two PIM routers are neighbors if there is a direct connection between them. To display your PIM neighbors, use the `show pim neighbor` command in EXEC mode.

- They are not used for unicast routing but are used only by PIM to look up an IPv4 next hop to a PIM source.
- They are not published to the Forwarding Information Base (FIB).
- When `mcast-intact` is enabled on an IGP, all IPv4 destinations that were learned through link-state advertisements are published with a set equal-cost mcast-intact next-hops to the RIB. This attribute applies even when the native next-hops have no IGP shortcuts.
- In IS-IS, the max-paths limit is applied by counting both the native and mcast-intact next-hops together. (In OSPFv2, the behavior is slightly different.)

### Configuration Example

Configures the router to use DR priority 4 for TenGigE interface 0/0/0/1, but other interfaces will inherit DR priority 2:

```
Router#configure
Router(config)#router pim
Router(config-pim-default)#address-family ipv4
Router(config-pim-default-ipv4)#dr-priority 2
Router(config-pim-default-ipv4)#interface TenGigE0/0/0/1
Router(config-pim-ipv4-if)#dr-priority 4
Router(config-ipv4-acl)#commit
```

### Running Configuration

```
Router#show run router pim
router pim
 address-family ipv4
   dr-priority 2
   spt-threshold infinity
   interface TenGigE0/0/0/1
     dr-priority 4
   hello-interval 45
```

### Verification

Verify if the parameters are set according to the configured values:

```
Router#show pim interface
PIM interfaces in VRF default
Address          Interface          PIM  Nbr  Hello  DR    DR Count Intvl  Prior
100.1.1.1        TenGigE0/0/0/1    on   1    45     4     this system
26.1.1.1         TenGigE0/0/0/26   on   1    30     2     this system
```

# Internet Group Management Protocol

Cisco IOS XR Software provides support for Internet Group Management Protocol (IGMP) over IPv4.

IGMP provides a means for hosts to indicate which multicast traffic they are interested in and for routers to control and limit the flow of multicast traffic throughout the network. Routers build state by means of IGMP messages; that is, router queries and host reports.

A set of routers and hosts that receive multicast data streams from the same source is called a multicast group. Hosts use IGMP messages to join and leave multicast groups.



**Note** IGMP messages use group addresses, which are Class D IP addresses. The high-order four bits of a Class D address are 1110. Host group addresses can be in the range 224.0.0.0 to 239.255.255.255. The address is guaranteed not to be assigned to any group. The address 224.0.0.1 is assigned to all systems on a subnet. The address 224.0.0.2 is assigned to all routers on a subnet.

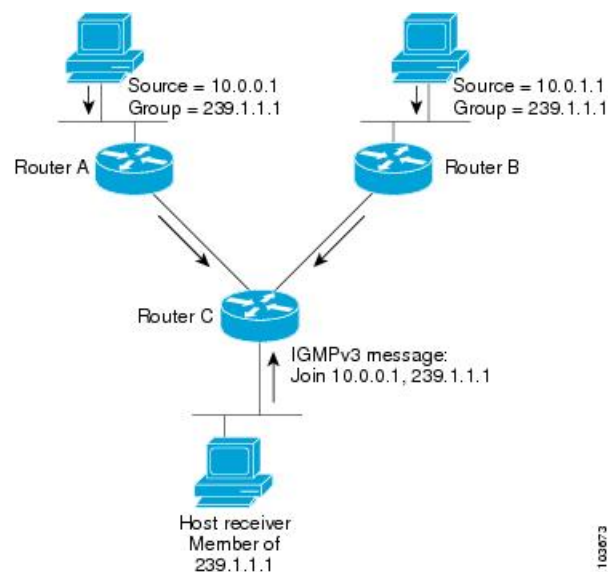
### Functioning of IGMP Routing

The following image "IGMP Singaling" , illustrates two sources, 10.0.0.1 and 10.0.1.1, that are multicasting to group 239.1.1.1.

The receiver wants to receive traffic addressed to group 239.1.1.1 from source 10.0.0.1 but not from source 10.0.1.1.

The host must send an IGMPv3 message containing a list of sources and groups (S, G) that it wants to join and a list of sources and groups (S, G) that it wants to leave. Router C can now use this information to prune traffic from Source 10.0.1.1 so that only Source 10.0.0.1 traffic is being delivered to Router C.

**Figure 3: IGMP Signaling**



## Configuring Maximum IGMP Per Interface Group Limit

The IGMP Per Interface States Limit sets a limit on creating OIF for the IGMP interface. When the set limit is reached, the group is not accounted against this interface but the group can exist in IGMP context for some other interface.

- If a user has configured a maximum of 20 groups and has reached the maximum number of groups, then no more groups can be created. If the user reduces the maximum number of groups to 10, the 20 joins will remain and a message of reaching the maximum is displayed. No more joins can be added until the number of groups has reached less than 10.
- If a user already has configured a maximum of 30 joins and add a max of 20, the configuration occurs displaying a message that the maximum has been reached. No state change occurs and also no more joins can occur until the threshold number of groups is brought down below the maximum number of groups.

### Configuration Example

Configures all interfaces with 4000 maximum groups per interface except TenGigE interface 0/0/0/6, which is set to 3000:

```
Router#config
Router(config)#router igmp
Router(config-igmp)#maximum groups-per-interface 4000
Router(config-igmp)#interface TenGigE0/0/0/6
Router(config-igmp-default-if)#maximum groups-per-interface 3000
Router(config-igmp-default-if)#commit
```

### Running Configuration

```
router igmp
 interface TenGigE0/0/0/6
   maximum groups-per-interface 3000
 !
 maximum groups-per-interface 4000
 !
```

### Verification

```
Router#show igmp summary
Robustness Value 2
No. of Group x Interfaces 37
Maximum number of Group x Interfaces 50000
Supported Interfaces : 9
Unsupported Interfaces: 0
Enabled Interfaces : 8
Disabled Interfaces : 1
MTE tuple count : 0
```

| Interface        | Number<br>Groups | Max #<br>Groups |
|------------------|------------------|-----------------|
| Loopback0        | 4                | 4000            |
| TenGigE0/0/0/0   | 5                | 4000            |
| TenGigE0/0/0/1   | 5                | 4000            |
| TenGigE0/0/0/2   | 0                | 4000            |
| TenGigE0/0/0/3   | 5                | 4000            |
| TenGigE0/0/0/6   | 5                | 3000            |
| TenGigE0/0/0/18  | 5                | 4000            |
| TenGigE0/0/0/19  | 5                | 4000            |
| TenGigE0/0/0/6.1 | 3                | 4000            |

## SSM Static Source Mapping

Configure a source (1.1.1.1) as part of a set of sources that map SSM groups described by the specified access-list (4).

## Configuration Example

```

Router#configure
Router(config)#ipv4 access-list 4
Router(config-ipv4-acl)#permit ipv4 any 229.1.1.0 0.0.0.255
Router(config-ipv4-acl)#exit
Router(config)# multicast-routing
Router(config-mcast)#address-family ipv4
Router(config-mcast-default-ipv4)#ssm range 4
Router(config-mcast-default-ipv4)#exit
Router(config-mcast)#exit
Router(config)#router igmp
Router(config-igmp)#ssm map static 1.1.1.1 4
*/Repeat the above step as many times as you have source addresses to include in the set
for SSM mapping/*
Router(config-igmp)#interface TenGigE0/0/0/3
Router(config-igmp-default-if)#static-group 229.1.1.1
Router(config-igmp-default-if)#commit

```

## Running Configuration

```

Router#show run multicast-routing
multicast-routing
  address-family ipv4
    ssm range 4
  interface all enable
!
!
Router#show access-lists 4
ipv4 access-list 4
  10 permit ipv4 any 229.1.1.0 0.0.0.255

Router#show run router igmp
router igmp
  interface TenGigE0/0/0/3
  static-group 229.1.1.1
!
  ssm map static 1.1.1.1 4

```

## Verification

Verify if the parameters are set according to the configured values:

```

Router#show mrib route 229.1.1.1 detail
IP Multicast Routing Information Base
Entry flags: L - Domain-Local Source, E - External Source to the Domain,
             C - Directly-Connected Check, S - Signal, IA - Inherit Accept,
             IF - Inherit From, D - Drop, ME - MDT Encap, EID - Encap ID,
             MD - MDT Decap, MT - MDT Threshold Crossed, MH - MDT interface handle
             CD - Conditional Decap, MPLS - MPLS Decap, EX - Extranet
             MoFE - MoFRR Enabled, MoFS - MoFRR State, MoFP - MoFRR Primary
             MoFB - MoFRR Backup, RPFID - RPF ID Set, X - VXLAN
Interface flags: F - Forward, A - Accept, IC - Internal Copy,
                NS - Negate Signal, DP - Don't Preserve, SP - Signal Present,
                II - Internal Interest, ID - Internal Disinterest, LI - Local Interest,
                LD - Local Disinterest, DI - Decapsulation Interface
                EI - Encapsulation Interface, MI - MDT Interface, LVIF - MPLS Encap,
                EX - Extranet, A2 - Secondary Accept, MT - MDT Threshold Crossed,
                MA - Data MDT Assigned, LMI - mLDP MDT Interface, TMI - P2MP-TE MDT Interface
                IRMI - IR MDT Interface
(1.1.1.1,229.1.1.1) RPF nbr: 1.1.1.1 Flags: RPF
Up: 00:01:11
Incoming Interface List

```

```

Loopback0 Flags: A, Up: 00:01:11
Outgoing Interface List
TenGigE0/0/0/3 Flags: F NS LI, Up: 00:01:11

```

## Statistics for Ingress Multicast Routes

Multicast and interface statistics are often used for accounting purpose. By default Multicast Forwarding Information Base (MFIB) does not store multicast route statistics. In order to enable MFIB to create and store multicast route statistics for ingress flows use the **hw-module profile mfib statistics** command in the configuration mode. Use No form of the latter command to disable logging of multicast route statistics. For the configuration to take effect, you must reload affected line cards after executing the command .



**Note** The MFIB counter can store a maximum of 2000 multicast routes, if the count exceeds beyond 2000 routes, then statistics are overwritten.

This table lists commands used to display or reset multicast route statistics stored in MFIB.

**Table 1: show and clear commands for Multicast Statistics**

| Command   | Description   |
|---|---|
| <b>show mfib hardware route statistics location &lt;node-id&gt;</b>                                   | Displays platform-specific MFIB information for the packet and byte counters for all multicast route.   |
| <b>show mfib hardware route &lt;source-address&gt; location &lt;node-id&gt;</b>                       | Displays platform-specific MFIB information for the packet and byte counters for multicast routes originating from the specified source.  |
| <b>Show mfib hardware route &lt;source-address&gt;&lt;group-address&gt; location &lt;node-id&gt;</b>  | Displays platform-specific MFIB information for the packet and byte counters for multicast routes originating from the specified source and belonging to specified multicast group. |
| <b>clear mfib hardware ingress route statistics location &lt;node-id&gt;</b>                          | Resets allocated counter values regardless of the MFIB hardware statistics mode from the designated node.   |
| <b>clear mfib hardware route &lt;source-address&gt; location &lt;node-id&gt;</b>                      | Resets allocated counter values regardless of the MFIB hardware statistics mode from the designated node for specified multicast route source.                                      |
| <b>clear mfib hardware route &lt;source-address&gt;&lt;group-address&gt; location &lt;node-id&gt;</b> | Resets allocated counter values regardless of the MFIB hardware statistics mode from the designated node for specified multicast route source and multicast group.                  |





**Note** To program IPv6 multicast routes in external TCAM, use the following commands:

- **hw-module profile tcam fib v6mcast percent** *value*
- **hw-module profile tcam fib ipv6 unicast percent** *value*
- **hw-module profile tcam fib ipv6 unicast prefix** *value*

Configuring only **hw-module profile tcam fib v6mcast percent** *value* causes an unexpected behaviour for 5501-SE.

## Configuring Statistics for Ingress Multicast Routes

### Configuration Example

In this example you will enable MRIB route statistics logging for ingress multicast routes for all locations:

```
/*Configure IPv4 ACL enabling multicast route statistics for the configured ACLs. */

ipv6 access-list v6
10 permit ipv6 any host ff33::1
!
ipv4 access-list v4
10 permit ipv4 any host 232.1.1.1
!

/* Enable multicast route statistics for the configured ACL. */
/* VRF */
Router#config
Router(config)#hw-module route-stats l3mcast vrf [default | <vrf_name>] [ipv4 | ipv6] ingress
<access_list_name>
Router(config)#commit
Router(config)#exit

* IPv4 */
Router#config
Router(config)#hw-module route-stats l3mcast ipv4 ingress <access_list_name>
Router(config)#commit
Router(config)#exit

* IPv6 */
Router#config
Router(config)#hw-module route-stats l3mcast ipv6 ingress <access_list_name>
Router(config)#commit
Router(config)#exit
```

### Running Configuration

```
multicast-routing
address-family ipv4
rate-per-route
interface all enable
!
address-family ipv6
rate-per-route
interface all enable
```

!  
!

### Verification

The below show commands display the multicast statistics for source (20.0.0.2), group (232.1.1.1) for ingress route:



**Note** The multicast egress statistics per flow (per SG) is not supported. But egress interface level multicast statistics is supported. Also the drop statistics is not supported.

```
Router#show mfib route rate
IP Multicast Forwarding Rates
(20.0.0.2,232.1.1.1)
Incoming rate :
Node : 0/0/CPU0 : 1000 / 367998
Outgoing rate :
Node : 0/0/CPU0 : 0 / 0
```

## Multicast Route Statistics

Multicast route statistic feature provides information about the multicast routes. The multicast statistics information includes the rate at which packets are received.

Before enabling multicast route statistics, you must configure an ACL to specify which of the IP route statistics to be captured.

## Restrictions and Usage Guidelines for Multicast Route Statistics

These are the points that you should consider before implementing multicast route statistics feature:

- Multicast route statistics are available for <S,G> routes only. The statistics for <\*,G> routes are not available.
- Multicast route statistics for egress direction is not supported.
- When ACL is mapped with **hw-module router-stats** configuration, you can't modify the ACL. To modify ACLs that are mapped with router-stats, remove the existing **hw-module router-stats** configuration and update the ACL entries. Then, configure the **hw-module router-stats** again.

This feature supports:

- L3 Multicast traffic
- MVPN GRE
- Multicast over GRE
- LSM
- Default VRFs.

## Configure Multicast Route Statistics

Configuring multicast route statistics includes these main tasks:

- Configuring an ACL
- Enabling multicast route statistics for the configured ACLs

```
RP0/0/RP0/CPU0:router# configure
```

```
/* Configure an ACL matching the (S,G) routes for which statistics have to be captured:*/
RP0/0/RP0/CPU0:router(config)# ipv4 access-list mcast-counter
RP0/0/RP0/CPU0:router(config-acl)# 10 permit ipv4 host 10.1.1.2 host 224.2.151.1
RP0/0/RP0/CPU0:router(config-acl)# 30 permit ipv4 10.1.1.0/24 232.0.4.0/22
RP0/0/RP0/CPU0:router(config-acl)# 50 permit ipv4 192.168.0.0/24 232.0.4.0/22
RP0/0/RP0/CPU0:router(config-acl)# commit
RP0/0/RP0/CPU0:router(config-acl)# exit

/* Enable multicast route statistics for the configured ACL on the default VRF. */
RP0/0/RP0/CPU0:router(config)# hw-module route-stats l3mcast vrf default ipv4 egress
mcast-router
RP0/0/RP0/CPU0:router(config)# hw-module route-stats l3mcast vrf default ipv4 ingress
mcast-router
```



### Note

- If you are enabling the route stats for a router on the global table, use **vrf default**. If you are enabling the route stats for specific vrf, use the **vrf vrfname** option.
- In case, you want to enable route stats for all tables, do not use the **vrf**.

For example:

```
RP0/0/RP0/CPU0:router(config)#hw-module route-stats l3mcast ipv4 mcast-counter
```

- If you configure **hw-module route-stats** on both vrf default and vpn routes for either IPv4 or IPv6 ACLs, then to switch vrf default to other VRF, remove the configuration of the existing **hw-module route-stats** and commit it, and then configure the hw-module stats with the required vrf and commit it.

### Verification

Use the **show mfib route rate** command to verify if the multicast route information is captured for the traffic that matches the ACL:



### Note

The ingress stats are always per S, G.

```
RP0/0/RP0/CPU0:router# show mfib route rate
Thu Aug 16 18:04:47.312 PDT

IP Multicast Forwarding Rates
(Source Address, Group Address)
Incoming rate:
Node: (Incoming node) : pps/bps
Outgoing rate:
Node: (Outgoing node) : pps/bps
```

```
(10.1.1.2,232.0.0.1)
  Incoming rate :
    Node : 0/0/CPU0 : 4593 / 18153671
  Outgoing rate :
    Node : 0/0/CPU0 : 0 / 0
```

The above output shows that the multicast source **10.1.1.2** is sending packets to multicast group **232.0.0.1** and is received at **4593** pps.

For the information on the interface accounting stats, use the show interface accounting command. The following show command displays interface accounting stats for ingress:

```
Router# show int tenGigE 0/0/0/15 accounting
Mon Nov 12 10:26:20.592 UTC
TenGigE0/0/0/15
  Protocol          Pkts In      Chars In      Pkts Out      Chars Out
  IPV6_MULTICAST    22125711958  1814308380556 0              0
  IPV6_ND           0            0              1243          128960
```

Cisco IOS XR Release 7.4.1 and later support YANG data model for multicast interface counters.

- Cisco-IOS-XR-infra-statsd-oper:infra-statistics/interfaces/interface/protocols/protocol
- Cisco-IOS-XR-infra-statsd-oper:infra-statistics/interfaces/interface[interface-name=TenGigE0/0/0/18]/protocols/protocol



**Note** The YANG model does not support ingress and egress multicast route stats.

The following show command displays interface accounting stats for egress:

```
Router# show interfaces bundle-ether 100.1001 accounting rates
Mon Aug 26 15:56:41.738 IST
Bundle-Ether100.1001
  Protocol          Bits/sec      Pkts/sec      Bits/sec      Pkts/sec
  Ingress           Egress
  IPV4_MULTICAST    0             0             11455000      990
  IPV6_MULTICAST    0             0             11455000      990
  ARP               0             0             0             0
  IPV6_ND           0             0             0             0
```

## Bundle Member Selection

**Table 2: Feature History Table**

| Feature Name            | Release Information | Feature Description   |
|-------------------------|---------------------|---|
| Bundle Member Selection | Release 7.3.1       | <p>This feature enables selecting a bundle member in the control plane to steer the L2 and L3 multicast traffic traversing over bundle at the egress NP.</p> <p>This feature helps optimize fabric bandwidth as the member selection is performed in the control plane.</p> |

This feature enables selecting a bundle member in the control plane to steer the L2 and L3 multicast traffic traversing over bundle at the egress NP.

This feature brings following benefits:

- Optimizes fabric bandwidth as the member selection is performed in the control plane
- Reduces NP bandwidth and processing as number of OLE replications are less
- Supports bundle member change in MVPN head node with local receiver

## Multicast Over IPV4 Unicast GRE Tunnels

*Table 3: Feature History Table*

| Feature Name  | Release Information | Feature Description   |
|---|---------------------|---|
| Support for Multicast Over IPV4 Unicast GRE Tunnels | Release 7.2.2       | <p>This feature allows encapsulation of multicast packets using GRE tunnels, thereby enabling transport of multicast packets securely between source and destination routers located in different IP clouds.</p> <p>Support for this feature is applicable only to Cisco N540-24Z8Q2C-M router.</p> |

Use IPV4 unicast GRE tunnels to transport multicast traffic securely over the network.

Generic Routing Encapsulation (GRE) is a tunneling protocol that encapsulates and transport packets of one protocol over another protocol.

If you want to send multicast packets from a source to destination router configured with a different routing protocol, you can encapsulate the packets using GRE unicast tunnels. The encapsulated packets are forwarded like any other IPv4 unicast packet to the destination endpoint of the tunnel. The destination router then de-encapsulates the packet to retrieve the multicast packets.

For more information [Configuring GRE Tunnels](#).

### Restrictions

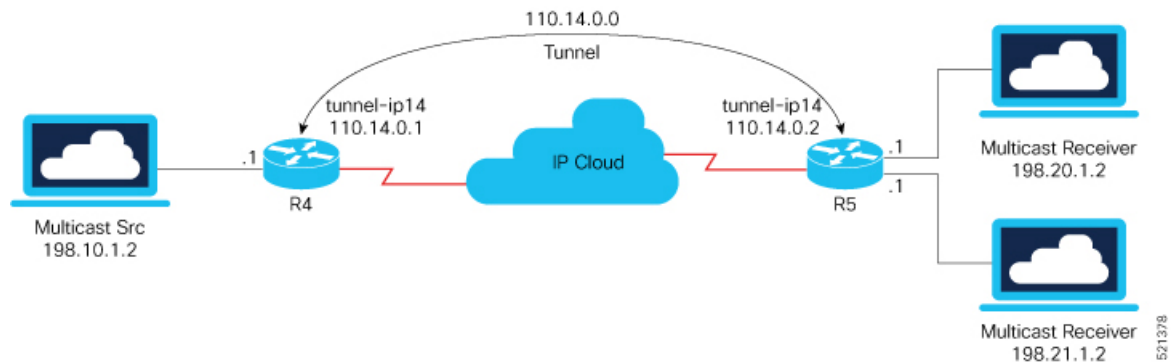
- ECMP and LAG hash based on GRE header is not supported on the NCS 5500 line cards line cards.
- Multicast over GRE with L3VPN is only supported on UFI and not on the NCS 5500 line cards and NCS 5700 line cards.
- Support for this feature is applicable only to Cisco N540-24Z8Q2C-M router.
- Only SSM V4 and V6 address family traffic is supported.
- Supports up to 500 GRE tunnels
- Only up to 16 unique source IP addresses are supported for the tunnel source

- Multicast over GRE tunnel is supported only with 2-pass GRE tunnel configuration.
- Configurable MTU is not supported on Single-pass GRE interface, but supported on 2-pass GRE interface.
- This is a native Multicast over GRE feature and not Multicast VPN (mVPN) Profile 0 or Rosen GRE.

### Configuration

In this topology, the multicast source (198.10.1.2) is connected to R4. The multicast receivers are connected to R5 and is configured to receive multicast packets. Separating the source (R4) and receiver (R5) is an IP cloud, which is not configured for multicast routing.

Multicast packets are encapsulated with GRE headers and transported via GRE tunnel (tunnel-ip14).



### Configuration Example

R4

```
interface TenGigE0/0/0/32.1
  ipv4 address 198.10.1.1 255.255.255.0
  ipv6 address 2002:10:1::1/64
  encapsulation dot1q 1
!

interface Loopback14
  ipv4 address 10.10.10.14 255.255.255.255
!
interface tunnel-ip14
  ipv4 address 110.14.0.1 255.255.255.0
  ipv6 address 110:14::1/64
  tunnel mode gre ipv4
  tunnel source 10.10.10.14
  tunnel destination 20.20.20.14
!
router ospf core_native_mcast
  nsr
  router-id 10.10.10.1
  area 0.0.0.0
  interface Bundle-Ether121
  !
  interface Loopback14
  !

router ospf mogre_edge_native_mcast
  nsr
  router-id 10.10.10.11
```

```

area 0.0.0.0
 interface tunnel-ip14
 !
 interface TenGigE0/0/0/32.1

R5

interface TenGigE0/0/0/0.1
 ipv4 address 198.20.1.1 255.255.255.0
 ipv6 address 2002:20:1::1/64
 encapsulation dot1q 1
!

interface TenGigE0/0/0/1.1
 ipv4 address 198.21.1.1 255.255.255.0
 ipv6 address 2002:21:1::1/64
 encapsulation dot1q 1
!

interface Loopback14
 ipv4 address 20.20.20.14 255.255.255.255
!

interface tunnel-ip14
 ipv4 address 110.14.0.2 255.255.255.0
 ipv6 address 110:14::2/64
 tunnel mode gre ipv4
 tunnel source 20.20.20.14
 tunnel destination 10.10.10.14
!

router ospf core_native_mcast
 nsr
 router-id 20.20.20.1
 area 0.0.0.0
  interface Bundle-Ether121
  !
  interface Loopback14

router ospf mogre_edge_native_mcast
 nsr
 router-id 20.20.20.11
 area 0.0.0.0
  interface tunnel-ip14
  !
  interface TenGigE0/0/0/0.1
  !
  interface TenGigE0/0/0/1.1

```

## Verification

In this example, Router R4 receives joins for group 232.1.0.0 from source 198.10.1.2 connected to R4. PIM joins are traversed from R5 to R4, as shown in the **show PIM topology** command output. The joins are learnt on Router R4 via tunnel-ip, as it acts as the transport layer.

```
RP/0/RP0/CPU0:R4# show pim topology 232.1.0.0 198.10.1.2
```

```

IP PIM Multicast Topology Table
Entry state: (*S,G) [RPT/SPT] Protocol Uptime Info
Entry flags: KAT - Keep Alive Timer, AA - Assume Alive, PA - Probe Alive

```

RA - Really Alive, IA - Inherit Alive, LH - Last Hop  
 DSS - Don't Signal Sources, RR - Register Received  
 SR - Sending Registers, SNR - Sending Null Registers  
 E - MSDP External, EX - Extranet  
 MFA - Mofrr Active, MFP - Mofrr Primary, MFB - Mofrr Backup  
 DCC - Don't Check Connected, ME - MDT Encap, MD - MDT Decap  
 MT - Crossed Data MDT threshold, MA - Data MDT Assigned  
 SAJ - BGP Source Active Joined, SAR - BGP Source Active Received,  
 SAS - BGP Source Active Sent, IM - Inband mLDP, X - VxLAN  
 Interface state: Name, Uptime, Fwd, Info  
 Interface flags: LI - Local Interest, LD - Local Dissinterest,  
 II - Internal Interest, ID - Internal Dissinterest,  
 LH - Last Hop, AS - Assert, AB - Admin Boundary, EX - Extranet,  
 BGP - BGP C-Multicast Join, BP - BGP Source Active Prune,  
 MVS - MVPN Safi Learned, MV6S - MVPN IPv6 Safi Learned

(198.10.1.2,232.1.0.0)SPT SSM Up: 00:33:51

**JP: Join(now) RPF: TenGigE0/0/0/32.1,198.10.1.2\* Flags:**  
**tunnel-ip14 00:29:34 fwd Join(00:03:00)**

From the following **show mrib route** command output, you can see that TenGigE0/0/0/32.1 is the incoming interface and tunnel-ip14 is the outgoing interface for (S,G) 198.10.1.2, 232.1.0.0.

RP/0/RP0/CPU0:R4# **show mrib route 232.1.0.0 detail**

IP Multicast Routing Information Base

Entry flags: L - Domain-Local Source, E - External Source to the Domain,  
 C - Directly-Connected Check, S - Signal, IA - Inherit Accept,  
 IF - Inherit From, D - Drop, ME - MDT Encap, EID - Encap ID,  
 MD - MDT Decap, MT - MDT Threshold Crossed, MH - MDT interface handle  
 CD - Conditional Decap, MPLS - MPLS Decap, EX - Extranet  
 MoFE - MoFRR Enabled, MoFS - MoFRR State, MoFP - MoFRR Primary  
 MoFB - MoFRR Backup, RPFID - RPF ID Set, X - VXLAN

Interface flags: F - Forward, A - Accept, IC - Internal Copy,  
 NS - Negate Signal, DP - Don't Preserve, SP - Signal Present,  
 II - Internal Interest, ID - Internal Disinterest, LI - Local Interest,  
 LD - Local Disinterest, DI - Decapsulation Interface  
 EI - Encapsulation Interface, MI - MDT Interface, LVIF - MPLS Encap,  
 EX - Extranet, A2 - Secondary Accept, MT - MDT Threshold Crossed,  
 MA - Data MDT Assigned, LMI - mLDP MDT Interface, TMI - P2MP-TE MDT Interface  
 IRMI - IR MDT Interface, TRMI - TREE SID MDT Interface, MH - Multihome Interface

(198.10.1.2,232.1.0.0) Ver: 0x6e42 RPF nbr: 198.10.1.2 Flags: RPF, FGID: 16915, Statistics  
 enabled: 0x0, Tunnel RIF: -1  
 Up: 00:32:54

#### Incoming Interface List

**TenGigE0/0/0/32.1 Flags: F A LI, Up: 00:32:54**

#### Outgoing Interface List

**tunnel-ip14 (0/0/0) Flags: F NS, Up: 00:28:37**

RP/0/RP0/CPU0:R4#sh mfib route 232.1.0.0 198.10.1.2

IP Multicast Forwarding Information Base

Entry flags: C - Directly-Connected Check, S - Signal, D - Drop,  
 IA - Inherit Accept, IF - Inherit From, EID - Encap ID,  
 ME - MDT Encap, MD - MDT Decap, MT - MDT Threshold Crossed,  
 MH - MDT interface handle, CD - Conditional Decap,  
 DT - MDT Decap True, EX - Extranet, RPFID - RPF ID Set,  
 MoFE - MoFRR Enabled, MoFS - MoFRR State, X - VXLAN

Interface flags: F - Forward, A - Accept, IC - Internal Copy,  
 NS - Negate Signal, DP - Don't Preserve, SP - Signal Present,  
 EG - Egress, EI - Encapsulation Interface, MI - MDT Interface,  
 EX - Extranet, A2 - Secondary Accept

Forwarding/Replication Counts: Packets in/Packets out/Bytes out  
 Failure Counts: RPF / TTL / Empty Olist / Encap RL / Other



```

(198.10.1.2,232.1.0.0),  Flags:
  Up: 00:35:39
  Last Used: never
  SW Forwarding Counts: 0/0/0
  SW Replication Counts: 0/0/0
  SW Failure Counts: 0/0/0/0/0
tunnel-ip14 (0xe0) Flags:  NS, Up:00:31:16

RP/0/RP0/CPU0:R4# show mfib hardware route 232.1.0.0 198.10.1.2 location 0/0/cPU0
Route (198.10.1.2: 232.1.0.0)
  HAL PD context
    VRF ID: 0 Core MCID : 0 Core backup MCID 0

  HAL Ingress route context:
    Route FGID: 16915 RPF IF signal : not-set Local receivers: set
    Encap ID flag: not-set, Encap ID: 0
    Tunnel RIF: 0x0
    Statistics enabled: not-set

  Ingress engine context:
    local_route: set, is_accept_intf_bvi: not-set is_tun_rif_set: not-set
    VRF ID: 0 RPF ID: 0 Tunnel RIF: 0x0
  HAL Egress route context:
    RPF ID: 0

  Egress engine context:
    out_of_sync: not-set, local_intf: not-set
    bvi_count: 0

  DPA Route context:
    Handle: 30895ef540
    Transaction ID: 91864
    Number of OLE: 4   VRF ID: 0
    Incoming interface : Te0/0/0/32.1 A_intf_id: 0x39 Merged flag 0
    Tunnel RIF : 0x0 FGID: 16915
    FEC ID : 0x2001f888 Punt action: 0x0
    TCAM entry ID : 0x0 IPMC action: 0x4 FEC Accessed 1
    L3 Intf Refhandle : 0x308ccbd448 L3 interface ref key: 0x0
    Statistics enabled : not-set Statistics activated : not-set

  Egress Route OLEs:
    Handle: 308e669960
    Transaction ID: 267707
    NPU ID: 0 Outgoing intf: ti14
    OLE Type : Gre tunnel interface
    outgoing port : 0x0 cud: 0x13878 is_bundle: 0
    Sys_port : 0x0 mpls encap id: 0x0 LAG ID: 0
    is_pw_access: 0 pw_encap_id: 0
    L3 intf refhdl : 0x308d47bee8 L3 intf refkey: 0x200040fc
    L2 Port refhandle : 0x0 L2 Port refkey: 0x0
    MPLS nh refhandle : 0x0 MPLS nh refkey: 0x0
    LAG port refhandle : 0x0 LAG port refkey: 0x0
    EFP-Visibility: not-set
    Total fwd packets : 0 Total fwd bytes: 0

```

The following command output shows that the PIM joins received from TenGigE0/0/0/0.1 and TenGigE0/0/0/1.1 for group 232.1.0.0.

```

RP/0/RP0/CPU0:R5# show pim topology 232.1.0.0 198.10.1.2

IP PIM Multicast Topology Table
Entry state: (*S,G) [RPT/SPT] Protocol Uptime Info

```

```

Entry flags: KAT - Keep Alive Timer, AA - Assume Alive, PA - Probe Alive
RA - Really Alive, IA - Inherit Alive, LH - Last Hop
DSS - Don't Signal Sources, RR - Register Received
SR - Sending Registers, SNR - Sending Null Registers
E - MSDP External, EX - Extranet
MFA - Mofrr Active, MFP - Mofrr Primary, MFB - Mofrr Backup
DCC - Don't Check Connected, ME - MDT Encap, MD - MDT Decap
MT - Crossed Data MDT threshold, MA - Data MDT Assigned
SAJ - BGP Source Active Joined, SAR - BGP Source Active Received,
SAS - BGP Source Active Sent, IM - Inband mLDP, X - VxLAN
Interface state: Name, Uptime, Fwd, Info
Interface flags: LI - Local Interest, LD - Local Dissinterest,
II - Internal Interest, ID - Internal Dissinterest,
LH - Last Hop, AS - Assert, AB - Admin Boundary, EX - Extranet,
BGP - BGP C-Multicast Join, BP - BGP Source Active Prune,
MVS - MVPN Safi Learned, MV6S - MVPN IPv6 Safi Learned

(198.10.1.2,232.1.0.0)SPT SSM Up: 00:44:09
JP: Join(00:00:02) RPF: tunnel-ip14,110.14.0.1 Flags:
  TenGigE0/0/0/0.1      00:44:09 fwd LI LH
  TenGigE0/0/0/1.1      00:44:06 fwd LI LH

```

The traffic received from tunnel-ip is then forwarded to multicast receivers TenGigE0/0/0/0.1 and TenGigE0/0/0/1.1 acting as OLE, as shown in the following output.

```

RP/0/RP0/CPU0:R5# show mrib route 232.1.0.0 detail
IP Multicast Routing Information Base
Entry flags: L - Domain-Local Source, E - External Source to the Domain,
C - Directly-Connected Check, S - Signal, IA - Inherit Accept,
IF - Inherit From, D - Drop, ME - MDT Encap, EID - Encap ID,
MD - MDT Decap, MT - MDT Threshold Crossed, MH - MDT interface handle
CD - Conditional Decap, MPLS - MPLS Decap, EX - Extranet
MoFE - MoFRR Enabled, MoFS - MoFRR State, MoFP - MoFRR Primary
MoFB - MoFRR Backup, RPFID - RPF ID Set, X - VXLAN
Interface flags: F - Forward, A - Accept, IC - Internal Copy,
NS - Negate Signal, DP - Don't Preserve, SP - Signal Present,
II - Internal Interest, ID - Internal Disinterest, LI - Local Interest,
LD - Local Disinterest, DI - Decapsulation Interface
EI - Encapsulation Interface, MI - MDT Interface, LVIF - MPLS Encap,
EX - Extranet, A2 - Secondary Accept, MT - MDT Threshold Crossed,
MA - Data MDT Assigned, LMI - mLDP MDT Interface, TMI - P2MP-TE MDT Interface
IRMI - IR MDT Interface, TRMI - TREE SID MDT Interface, MH - Multihome Interface

(198.10.1.2,232.1.0.0) Ver: 0x8ef6 RPF nbr: 110.14.0.1 Flags: RPF, FGID: 28465, Statistics
enabled: 0x0, Tunnel RIF: -1
Up: 00:42:42
  Incoming Interface List
    tunnel-ip14 Flags: A, Up: 00:38:24
  Outgoing Interface List
    TenGigE0/0/0/0.1 Flags: F NS LI, Up: 00:42:42
    TenGigE0/0/0/1.1 Flags: F NS LI, Up: 00:42:40

```

```

RP/0/RP0/CPU0:R5# show mfib route 232.1.0.0 198.10.1.2

```

```

IP Multicast Forwarding Information Base
Entry flags: C - Directly-Connected Check, S - Signal, D - Drop,
IA - Inherit Accept, IF - Inherit From, EID - Encap ID,
ME - MDT Encap, MD - MDT Decap, MT - MDT Threshold Crossed,
MH - MDT interface handle, CD - Conditional Decap,
DT - MDT Decap True, EX - Extranet, RPFID - RPF ID Set,
MoFE - MoFRR Enabled, MoFS - MoFRR State, X - VXLAN
Interface flags: F - Forward, A - Accept, IC - Internal Copy,

```

NS - Negate Signal, DP - Don't Preserve, SP - Signal Present,  
 EG - Egress, EI - Encapsulation Interface, MI - MDT Interface,  
 EX - Extranet, A2 - Secondary Accept  
 Forwarding/Replication Counts: Packets in/Packets out/Bytes out  
 Failure Counts: RPF / TTL / Empty Olist / Encap RL / Other

```
(198.10.1.2,232.1.0.0),  Flags:
Up: 00:43:30
Last Used: never
SW Forwarding Counts: 0/0/0
SW Replication Counts: 0/0/0
SW Failure Counts: 0/0/0/0/0
tunnel-ipl4 Flags:  A, Up:00:39:09
TenGigE0/0/0/0.1 Flags:  NS, Up:00:43:30
TenGigE0/0/0/1.1 Flags:  NS, Up:00:43:17
```

RP/0/RP0/CPU0:R5# **show mfib hardware route 232.1.0.0 198.10.1.2 location 0/0/CPU0**

```
Route (198.10.1.2: 232.1.0.0)
  HAL PD context
    VRF ID: 0 Core MCID : 0 Core backup MCID 0

  HAL Ingress route context:
    Route FGID: 28465 RPF IF signal : not-set Local receivers: set
    Encap ID flag: not-set, Encap ID: 0
    Tunnel RIF: 0x0
    Statistics enabled: not-set

    Ingress engine context:
      local_route: set, is_accept_intf_bvi: not-set is_tun_rif_set: not-set
      VRF ID: 0 RPF ID: 0 Tunnel RIF: 0x0
  HAL Egress route context:
    RPF ID: 0

    Egress engine context:
      out_of_sync: not-set, local_intf: not-set
      bvi_count: 0

  DPA Route context:
    Handle: 308852aed0
    Transaction ID: 228831
    Number of OLE: 2 VRF ID: 0
    Incoming interface : ti14 A_intf_id: 0x43 Merged flag 0
    Tunnel RIF : 0x0 FGID: 28465
    FEC ID : 0x2001fd37 Punt action: 0x0
    TCAM entry ID : 0x0 IPMC action: 0x4 FEC Accessed 1
    L3 Intf Refhandle : 0x308d76fee8 L3 interface ref key: 0x0
    Statistics enabled : not-set Statistics activated : not-set

  Egress Route OLEs:
    Handle: 308e27d930
    Transaction ID: 103691
    NPU ID: 0 Outgoing intf: Te0/0/0/1.1
    OLE Type : Main Interface
    outgoing port : 0x1d cud: 0x0 is_bundle: 0
    Sys_port : 0x0 mpls encap id: 0x0 LAG ID: 0
    is_pw_access: 0 pw_encap_id: 0
    L3 intf refhdl : 0x308cf40b08 L3 intf refkey: 0x4178
    L2 Port refhandle : 0x308cf49358 L2 Port refkey: 0xe8
    MPLS nh refhandle : 0x0 MPLS nh refkey: 0x0
    LAG port refhandle : 0x0 LAG port refkey: 0x0
    EFP-Visibility: not-set
    Total fwd packets : 0 Total fwd bytes: 0
```

```

NPU ID: 0 Outgoing intf: Te0/0/0/0.1
OLE Type : Main Interface
outgoing port : 0x1e cud: 0x0 is_bundle: 0
Sys_port : 0x0 mpls encap id: 0x0 LAG ID: 0
is_pw_access: 0 pw_encap_id:0
L3 intf refhndl : 0x308cf3e668 L3 intf refkey: 0x4168
L2 Port refhandle : 0x308cf470a8 L2 Port refkey: 0xf0
MPLS nh refhandle : 0x0 MPLS nh refkey: 0x0
LAG port refhandle : 0x0 LAG port refkey: 0x0
EFP-Visibility: not-set
Total fwd packets : 0 Total fwd bytes: 0

```

### Associated Commands

- [interface tunnel-ip](#)
- [tunnel mode](#)
- [tunnel source](#)
- [tunnel destination](#)

## Use Case: Video Streaming

In today's broadcast video networks, proprietary transport systems are used to deliver entire channel line-ups to each video branch office. IP based transport network would be a cost efficient/convenient alternative to deliver video services combined with the delivery of other IP based services. (Internet delivery or business services)

By its very nature, broadcast video is a service well-suited to using IP multicast as a more efficient delivery mechanism to reach end customers.

The IP multicast delivery of broadcast video is explained as follows:

1. Encoding devices in digital primary headends, encode one or more video channels into a Moving Pictures Expert Group (MPEG) stream which is carried in the network via IP multicast.
2. Devices at video branch office are configured by the operator to request the desired multicast content via IGMP joins.
3. The network, using PIM-SSM as its multicast routing protocol, routes the multicast stream from the digital primary headend to edge device receivers located in the video branch office. These edge devices could be edge QAM devices which modulate the MPEG stream for an RF frequency, or CMTS for DOCSIS.

Figure 4: Video Streaming

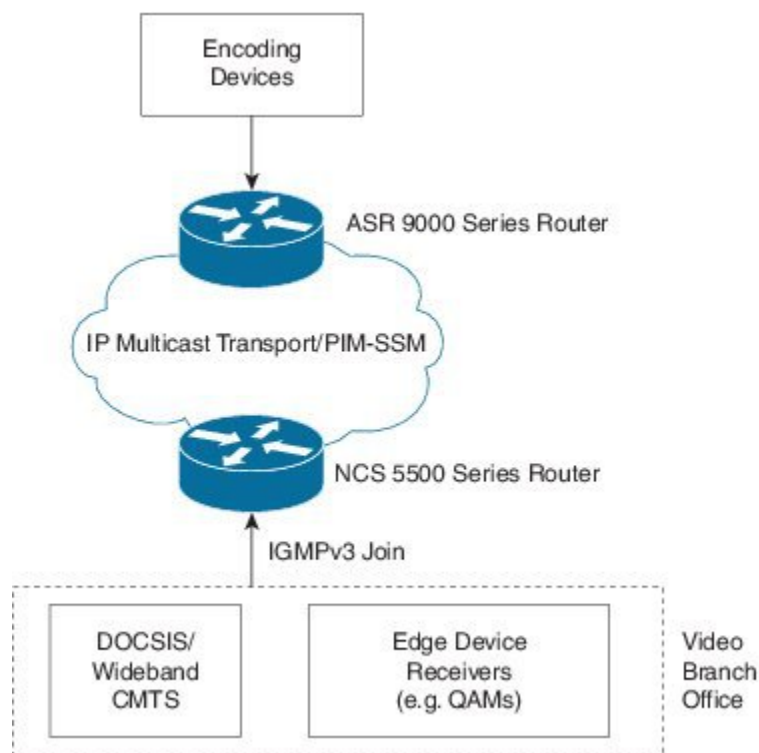
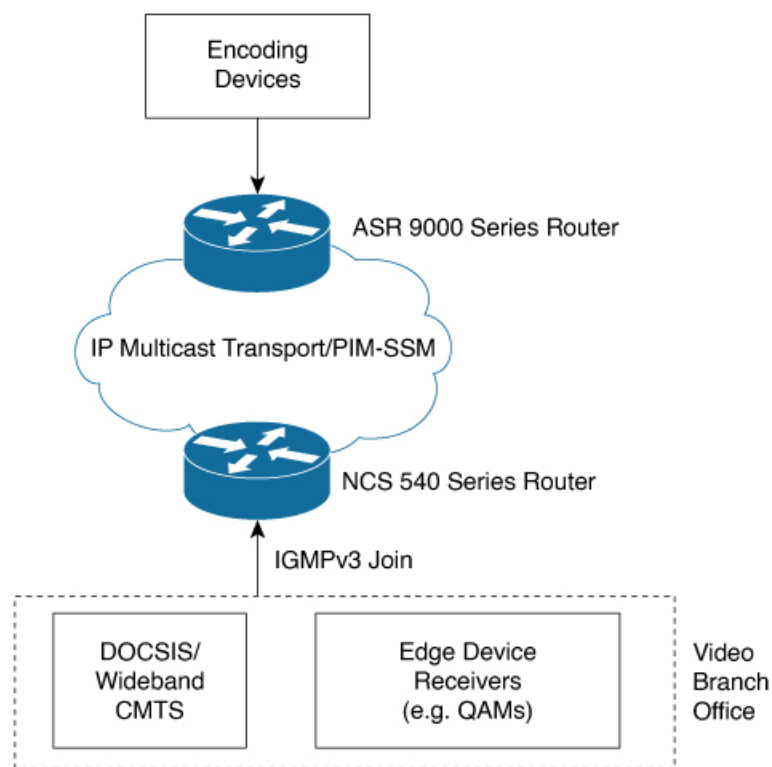


Figure 5: Video Streaming



# Multicast over Access Pseudo-Wire

Multicast over access pseudo-wire (PW) allow multicast traffic flooding with MLDP core and PWs that are terminating at CEs. Therefore, connecting two IGMP domains and extending the MVPN traffic via MPLS network terminating at a Layer 3 (VRF or global) domain or a Layer 2 domain using PW.

Multicast over access PWs help service providers to scale and reduce the hardware cost.



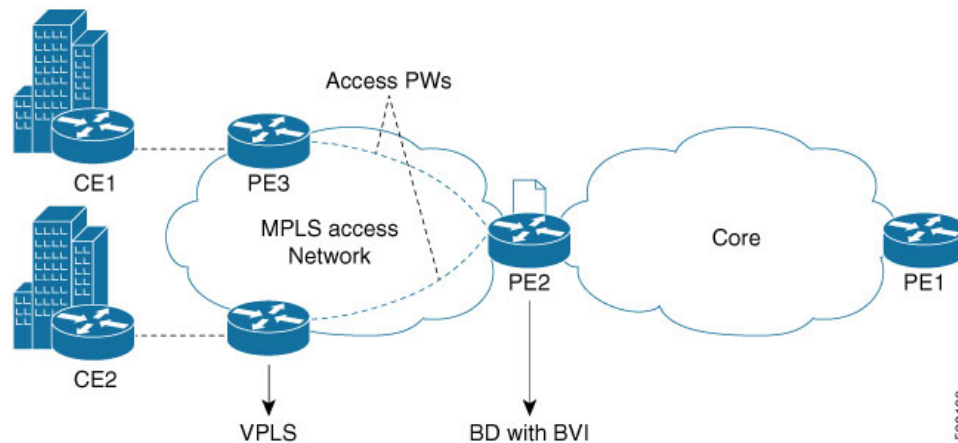
**Note** This feature isn't supported on the NCS 560 router.

## Implementation Consideration

- Doesn't support IGMP and MLD snooping over access PW
- Supports only flood mode
- Supports only SSM routes
- Doesn't support QoS over access PW (ingress/egress)
- Configure maximum MTU on the device acting as access PW endpoint. This allows easy movement of protocol packets.

## Configuring Multicast Over Access Pseudo-Wire

Consider the sample topology as shown in the below figure.



In the above topology:

- CEs are connected to PE3 (access device). PE3 has access PW configured. PE3 is reachable at 192.127.0.1
- PE2 (NCS 5500 or NCS 540) has VPLS configured with BVI and access PW.
- A point-to-multi point connectivity is established between PE2 and PE3s via pseudo-wire with BD and BVI interface.

- Multicast packets received from CEs over access PW are sent to PE2 with BVI as the incoming interface.
- Multicast packets received from the core are replicated over access PW towards PE3, which in turn replicates and forwards to the CEs. Here BVI acts as the forwarding interface.

The sample configuration is shown below:

```
/* Enter global configuration mode */
Router# configure
Router(config)# l2vpn

/* Configure pseudowire class name */
Router(config-l2vpn)# pw-class mpls

/* Configure MPLS encapsulation for the pseudowire */
Router(config-l2vpn-pwc)# encapsulation mpls
Router(config-l2vpn-pwc-mpls)#control-word
Router(config-l2vpn-pwc-mpls)#transport-mode ethernet
Router(config-l2vpn-pwc-mpls)#load-balancing
Router(config-l2vpn-pwc-mpls-load-bal)#flow-label both
Router(config-l2vpn-pwc-mpls-load-bal)#exit
Router(config-l2vpn-pwc-mpls)#exit
Router(config-l2vpn-pwc)#exit

/* Configure bridge group and bridge domain, then assign network interfaces to the bridge domain. */
Router(config-l2vpn)#bridge group bvi-access-pw
Router(config-l2vpn-bg)#bridge-domain 1
Router(config-l2vpn-bg-bd)#interface tengigE 0/0/0/0.1
Router(config-l2vpn-bg-bd-ac)#exit

/* Configure the pseudowire port to the bridge domain and the peer to the bridge domain. */
Router(config-l2vpn-bg-bd)#neighbor 192.127.0.1 pw-id 1
Router(config-l2vpn-bg-bd-pw)#exit
Router(config-l2vpn-bg-bd)#routed interface bvi1
Router(config-l2vpn-bg-bd)# commit
```

### Running Config

This section shows the Multicast over Access PW running config:

```
l2vpn
pw-class mpls
  encapsulation mpls
  control-word
  transport-mode ethernet
  load-balancing
  flow-label both
  !
!

bridge group BVI-ACCESS-PW
  bridge-domain 1
  interface TenGigE0/0/0/0.1
  !
  vfi 1
  neighbor 192.127.0.1 pw-id 1
  pw-class mpls
  !
  routed interface BVI1
  !
```

## Verification

Verify the status of PW using the **show l2vpn bridge-domain** command:

```
RP/0/RP0/CPU0# show l2vpn bridge-domain bd-name 1 detail
```

Legend: pp = Partially Programmed.

Bridge group: BVI-ACCESS-PW, bridge-domain: 1, id: 1, state: up, ShgId: 0, MSTi: 0

Coupled state: disabled

VINE state: BVI Resolved

MAC learning: enabled

MAC withdraw: enabled

MAC withdraw for Access PW: enabled

MAC withdraw sent on: bridge port up

MAC withdraw relaying (access to access): disabled

Flooding:

Broadcast & Multicast: enabled

Unknown unicast: enabled

MAC aging time: 300 s, Type: inactivity

MAC limit: 64000, Action: none, Notification: syslog

MAC limit reached: no, threshold: 75%

MAC port down flush: enabled

MAC Secure: disabled, Logging: disabled

Split Horizon Group: none

Dynamic ARP Inspection: disabled, Logging: disabled

IP Source Guard: disabled, Logging: disabled

DHCPv4 Snooping: disabled

DHCPv4 Snooping profile: none

IGMP Snooping: disabled

IGMP Snooping profile: none

MLD Snooping profile: none

Storm Control: disabled

Bridge MTU: 9086

MIB cvplsConfigIndex: 2

Filter MAC addresses:

P2MP PW: disabled

Multicast Source: IPv4

Create time: 22/09/2019 15:00:09 (2w5d ago)

No status change since creation

ACs: 2 (2 up), VFIs: 0, PWs: 1 (1 up), PBBs: 0 (0 up), VNIs: 0 (0 up)

List of ACs:

AC: BVI1, state is up

Type Routed-Interface

MTU 1514; XC ID 0x800001f7; interworking none

BVI MAC address:

0032.1772.20dc

Split Horizon Group: Access

PD System Data: AF-LIF-IPv4: 0x00000000 AF-LIF-IPv6: 0x00000000

AC: TenGigE0/0/0/0.1, state is up

Type VLAN; Num Ranges: 1

Rewrite Tags: []

VLAN ranges: [1, 1]

MTU 9086; XC ID 0x1; interworking none

MAC learning: enabled

Flooding:

Broadcast & Multicast: enabled

Unknown unicast: enabled

MAC aging time: 300 s, Type: inactivity

MAC limit: 64000, Action: none, Notification: syslog

MAC limit reached: no, threshold: 75%

MAC port down flush: enabled

MAC Secure: disabled, Logging: disabled

Split Horizon Group: none

E-Tree: Root



```

Dynamic ARP Inspection: disabled, Logging: disabled
IP Source Guard: disabled, Logging: disabled
DHCPv4 Snooping: disabled
DHCPv4 Snooping profile: none
IGMP Snooping: disabled
IGMP Snooping profile: none
MLD Snooping profile: none
Storm Control: bridge-domain policer
Static MAC addresses:
Statistics:
  packets: received 221328661592 (multicast 0, broadcast 0, unknown unicast 0, unicast
0), sent 4516080000
  bytes: received 24346154850336 (multicast 0, broadcast 0, unknown unicast 0, unicast
0), sent 559962777746
  MAC move: 0
Storm control drop counters:
  packets: broadcast 0, multicast 0, unknown unicast 0
  bytes: broadcast 0, multicast 0, unknown unicast 0
Dynamic ARP inspection drop counters:
  packets: 0, bytes: 0
IP source guard drop counters:
  packets: 0, bytes: 0
PD System Data: AF-LIF-IPv4: 0x00013806 AF-LIF-IPv6: 0x00013807

```

#### List of Access PWs:

```

PW: neighbor 192.127.0.1, PW ID 1, state is up ( established )
PW class mpls, XC ID 0xc0000001 .
Encapsulation MPLS, protocol LDP
Source address 8.8.8.8
PW type Ethernet, control word enabled, interworking none
PW backup disable delay 0 sec
Sequencing not set
LSP : Up
Flow Label flags configured (Tx=1,Rx=1), negotiated (Tx=0,Rx=0)

```

#### PW Status TLV in use

| MPLS         | Local                   | Remote                  |
|--------------|-------------------------|-------------------------|
| Label        | 24007                   | 24000                   |
| Group ID     | 0x1                     | 0x1                     |
| Interface    | Access PW               | 1                       |
| MTU          | 9086                    | 9086                    |
| Control word | enabled                 | enabled                 |
| PW type      | Ethernet                | Ethernet                |
| VCCV CV type | 0x2                     | 0x2                     |
|              | (LSP ping verification) | (LSP ping verification) |
| VCCV CC type | 0x7                     | 0x7                     |
|              | (control word)          | (control word)          |
|              | (router alert label)    | (router alert label)    |
|              | (TTL expiry)            | (TTL expiry)            |

#### Incoming Status (PW Status TLV):

```

Status code: 0x0 (Up) in Notification message
MIB cpwVcIndex: 3221225473
Create time: 22/09/2019 15:00:09 (2w5d ago)
Last time status changed: 26/09/2019 11:17:06 (2w1d ago)
MAC withdraw messages: sent 3, received 0
Forward-class: 0
Static MAC addresses:
Statistics:
  packets: received 0 (unicast 0), sent 0
  bytes: received 0 (unicast 0), sent 0
  MAC move: 0
Storm control drop counters:

```

```

    packets: broadcast 0, multicast 0, unknown unicast 0
    bytes: broadcast 0, multicast 0, unknown unicast 0
MAC learning: enabled
Flooding:
  Broadcast & Multicast: enabled
  Unknown unicast: enabled
MAC aging time: 300 s, Type: inactivity
MAC limit: 64000, Action: none, Notification: syslog
MAC limit reached: no, threshold: 75%
MAC port down flush: enabled
MAC Secure: disabled, Logging: disabled
Split Horizon Group: none
E-Tree: Root
DHCPv4 Snooping: disabled
DHCPv4 Snooping profile: none
IGMP Snooping: disabled
IGMP Snooping profile: none
MLD Snooping profile: none
Storm Control: bridge-domain policer
List of VFIs:
List of Access VFIs:

```

Verify the status of BVI outgoing interface and collect the FGID using the **show mrrib vrf vrf1000 route** command:

```
RP/0/RP0/CPU0:# show mrrib vrf vrf1000 route 232.1.1.1 detail
```

```

IP Multicast Routing Information Base
Entry flags: L - Domain-Local Source, E - External Source to the Domain,
  C - Directly-Connected Check, S - Signal, IA - Inherit Accept,
  IF - Inherit From, D - Drop, ME - MDT Encap, EID - Encap ID,
  MD - MDT Decap, MT - MDT Threshold Crossed, MH - MDT interface handle
  CD - Conditional Decap, MPLS - MPLS Decap, EX - Extranet
  MoFE - MoFRR Enabled, MoFS - MoFRR State, MoFP - MoFRR Primary
  MoFB - MoFRR Backup, RPFID - RPF ID Set, X - VXLAN
Interface flags: F - Forward, A - Accept, IC - Internal Copy,
  NS - Negate Signal, DP - Don't Preserve, SP - Signal Present,
  II - Internal Interest, ID - Internal Disinterest, LI - Local Interest,
  LD - Local Disinterest, DI - Decapsulation Interface
  EI - Encapsulation Interface, MI - MDT Interface, LVIF - MPLS Encap,
  EX - Extranet, A2 - Secondary Accept, MT - MDT Threshold Crossed,
  MA - Data MDT Assigned, LMI - mLDP MDT Interface, TMI - P2MP-TE MDT Interface
  IRMI - IR MDT Interface

(87.2.1.2,232.1.1.1) Ver: 0xa5b9 RPF nbr: 87.2.1.2 Flags: RPF, FGID: 24312, Statistics
enabled: 0x3
Up: 00:13:05
Incoming Interface List
  TenGigE0/0/0/0.2 Flags: A, Up: 00:13:05
Outgoing Interface List
  BVI1 Flags: F NS LI, Up: 00:13:05

```

## Multicast Label Distribution Protocol

This section contains information related to Multicast Label Distribution Protocol (MLDP) and the associated features.

## Multicast Label Distribution Protocol (MLDP) for Core

Multicast Label Distribution Protocol (MLDP) provides extensions to the Label Distribution Protocol (LDP) for the setup of point-to-multipoint (P2MP) and multipoint-to-multipoint (MP2MP) Label Switched Paths (LSPs) in Multiprotocol Label Switching (MPLS) networks.

MLDP eliminates the use of native multicast PIM to transport multicast packets across the core. In MLDP multicast traffic is label switched across the core. This saves a lot of control plane processing effort.

### Characteristics of MLDP Profiles on Core

The following MLDP profiles are supported when the router is configured as a core router:

- Profile 5—Partitioned MDT - MLDP P2MP - BGP-AD - PIM C-mcast Signaling
- Profile 6—VRF MLDP - In-band Signaling
- Profile 7—Global MLDP In-band Signaling
- Profile 12—Default MDT - MLDP - P2MP - BGP-AD - BGP C-mcast Signaling
- Profile 17—Default MDT - MLDP - P2MP - BGP-AD - PIM C-mcast Signaling

#### Point-to-Multipoint TE Profiles on Core and Edge Routers

The following profiles are supported when the router is configured as a core router and edge router for p2mp:

- Profile 8—Global P2MP-TE
- Profile 10—VRF Static-P2MP-TE with BGP AD
- Profile 22—RSVP-TE P2MP

## Label Switching Multicast for Edge Router

The following MLDP profiles are supported when the router is configured as an edge router:

- Profile 6—VRF MLDP - In-Band Signaling
- Profile 7—Global MLDP In-band Signaling
- Profile 14—MLDP Partitioned MDT P2MP with BGP AD and BGP-C Multicast Signaling

## Multicast MLDP Profile 14 support on an Edge Router

**Table 4: Feature History Table**

The MLDP Profile 14 is supported when the router is configured as an edge router.

IP based transport network is a cost efficient and convenient alternative to deliver video services combined with the delivery of other IP based services. To deliver IPTV content MLDP Profile 14 also called as the partitioned MDT, is supported when a router is configured as an edge router.

These are the characteristics of the profile 14:

- Customer traffic is SSM.
- Inter-AS Option A, B and C is supported.
- All PEs must have a unique BGP Route Distinguisher (RD) value.

### Configuration Example for mLDP Profile 14 on Edge Routers

```
vrf one
 address-family ipv4 unicast
  import route-target
    1:1
  !
  export route-target
    1:1
  !
  !

router pim
vrf one
 address-family ipv4
  rpf topology route-policy rpf-for-one
  mdt c-multicast-routing bgp
  !
  interface GigabitEthernet0/1/0/0
    enable
  !
  !
  !
  !

route-policy rpf-for-one
 set core-tree mldp-partitioned-p2mp
end-policy
!

multicast-routing
vrf one
 address-family ipv4
  mdt source Loopback0
  mdt partitioned mldp ipv4 p2mp
  rate-per-route
  interface all enable
  bgp auto-discovery mldp
  !
  accounting per-prefix
  !
  !
  !

mpls ldp
 mldp
  logging notifications
  address-family ipv4
  !
  !
  !
```

# Label Switched Multicast (LSM) Multicast Label Distribution Protocol (mLDP) based Multicast VPN (mVPN) Support

Label Switch Multicast (LSM) is MPLS technology extensions to support multicast using label encapsulation. Next-generation MVPN is based on Multicast Label Distribution Protocol (mLDP), which can be used to build P2MP and MP2MP LSPs through a MPLS network. These LSPs can be used for transporting both IPv4 and IPv6 multicast packets, either in the global table or VPN context.

For more information about the characteristics of each of the mLDP Profiles, [Characteristics of mLDP Profiles on Core](#)

## Benefits of LSM MLDP based MVPN

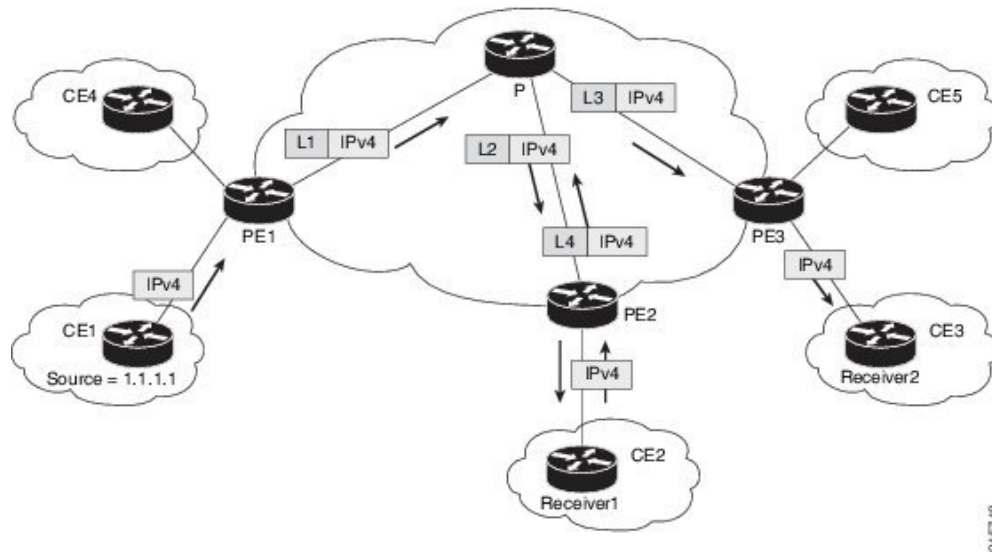
LSM provides these benefits when compared to GRE core tunnels that are currently used to transport customer traffic in the core:

- It leverages the MPLS infrastructure for transporting IP multicast packets, providing a common data plane for unicast and multicast.
- It applies the benefits of MPLS to IP multicast such as Fast ReRoute (FRR) and
- It eliminates the complexity associated PIM.

## Configuring MLDP MVPN

The MLDP MVPN configuration enables IPv4 multicast packet delivery using MPLS. This configuration uses MPLS labels to construct default and data Multicast Distribution Trees (MDTs). The MPLS replication is used as a forwarding mechanism in the core network. For MLDP MVPN configuration to work, ensure that the global MPLS mLDP configuration is enabled. To configure MVPN extranet support, configure the source multicast VPN Routing and Forwarding (mVRF) on the receiver Provider Edge (PE) router or configure the receiver mVRF on the source PE. MLDP MVPN is supported for both intranet and extranet.

Figure 6: mLDP based MPLS Network



## Packet Flow in mLDP-based Multicast VPN

For each packet coming in, MPLS creates multiple out-labels. Packets from the source network are replicated along the path to the receiver network. The CE1 router sends out the native IP multicast traffic. The Provider Edge1 (PE1) router imposes a label on the incoming multicast packet and replicates the labeled packet towards the MPLS core network. When the packet reaches the core router (P), the packet is replicated with the appropriate labels for the MP2MP default MDT or the P2MP data MDT and transported to all the egress PEs. Once the packet reaches the egress PE, the label is removed and the IP multicast packet is replicated onto the VRF interface.

## Realizing a mLDP-based Multicast VPN

There are different ways a Label Switched Path (LSP) built by mLDP can be used depending on the requirement and nature of application such as:

- P2MP LSPs for global table transit Multicast using in-band signaling.
- P2MP/MP2MP LSPs for MVPN based on MI-PMSI or Multidirectional Inclusive Provider Multicast Service Instance (Rosen Draft).
- P2MP/MP2MP LSPs for MVPN based on MS-PMSI or Multidirectional Selective Provider Multicast Service Instance (Partitioned E-LAN).

The router performs the following important functions for the implementation of mLDP:

1. Encapsulating VRF multicast IP packet with GRE/Label and replicating to core interfaces (imposition node).
2. Replicating multicast label packets to different interfaces with different labels (Mid node).
3. Decapsulate and replicate label packets into VRF interfaces (Disposition node).

## Characteristics of mLDP Profiles

- 

### Configuration rules for profiles

- 

### mLDP inband signaling

- 

## Configuration Process for MLDP MVPN (Intranet)

These steps provide a broad outline of the different configuration process of MLDP MVPN for intranet:

- Enabling MPLS MLDP
  - configure
  - mpls ldp mldp
- Configuring a VRF entry
  - configure
  - vrf vrf\_name
  - address-family ipv4/ipv6 unicast
  - import route-target route-target-ext-community
  - export route-target route-target-ext-community
- Configuring VPN ID
  - configure
  - vrf vrf\_name
  - vpn id vpn\_id
- Configuring MVPN Routing and Forwarding instance
  - configure
  - multicast-routing vrf vrf\_name
  - address-family ipv4
  - mdt default mldp ipv4 root-node
- Configuring the Route Distinguisher
  - configure
  - router bgp AS Number

- *vrf vrf\_name*
- *rd rd\_value*
- Configuring Data MDTs (optional)
  - *configure*
  - *multicast-routing vrf vrf\_name*
  - *address-family ipv4*
  - *mdt data <1-255>*
- Configuring BGP MDT address family
  - *configure*
  - *router bgp AS Number*
  - *address-family ipv4 mdt*
- Configuring BGP vpnv4 address family
  - *configure*
  - *router bgp AS Number*
  - *address-family vpnv4 unicast*
- Configuring BGP IPv4 VRF address family
  - *configure*
  - *router bgp AS Number*
  - *vrf vrf\_name*
  - *address-family ipv4 unicast*
- Configuring PIM SM/SSM Mode for the VRFs
  - *configure*
  - *router pim*
  - *vrf vrf\_name*
  - *address-family ipv4*
  - *rpf topology route-policy rosen\_mvpn\_mldp*

For each profile, a different route-policy is configured.

- Configuring route-policy
  - *route-policy rosen\_mvpn\_mldp*
  - *set core-tree tree-type*



- pass
- end-policy



**Note** The configuration of the above procedures depends on the profile used for each configuration.

## Configuration Example for MLDP on Core

```
mpls ldp
 mldp
  logging notifications
  address-family ipv4
  !
  !
  !
```

## Configure VRF MLDP In-Band Signaling on Edge Routers

To configure VRF MLDP in-band signaling (Profile 6) on edge routers, you must complete the following tasks:

1. Assign a route policy in PIM to select a reverse-path forwarding (RPF) topology.
2. Configure route policy to set the Multicast Distribution Tree (MDT) type to MLDP inband.
3. Enable MLDP-inband signaling in multicast routing.
4. Enable MPLS for MLDP.

### Configuration

/\* Assign a route policy in PIM to select a reverse-path forwarding (RPF) topology \*/

```
RP/0/RP0/CPU0:router(config)#router pim
RP/0/RP0/CPU0:router(config-pim)#vrf one
RP/0/RP0/CPU0:router(config-pim-one)#address-family ipv4
RP/0/RP0/CPU0:router(config-pim-one-ipv4)#rpf topology route-policy rpf-vrf-one
```

/\* Configure route policy to set the MDT type to MLDP inband \*/

```
RP/0/RP0/CPU0:router(config)#route-policy rpf-vrf-one
RP/0/RP0/CPU0:router(config-rpl)#set core-tree mldp-inband
RP/0/RP0/CPU0:router(config-rpl)#end-policy
```

/\* Enable MLDP-inband signaling in multicast routing \*/

```
RP/0/RP0/CPU0:router(config)#multicast-routing
RP/0/RP0/CPU0:router(config-mcast)#vrf one
RP/0/RP0/CPU0:router(config-mcast-one)#address-family ipv4
RP/0/RP0/CPU0:router(config-mcast-one-ipv4)#mdt source loopback 0
RP/0/RP0/CPU0:router(config-mcast-one-ipv4)#mdt mldp in-band-signaling ipv4
RP/0/RP0/CPU0:router(config-mcast-one-ipv4)#interface all enable
```

```

/* Enable MPLS MLDP */

RP/0/RP0/CPU0:router(config)#mpls ldp
RP/0/RP0/CPU0:router(config-ldp)#mldp

```

## Configure Global MLDP In-band Signaling on Edge Routers

To configure global MLDP in-band signaling (Profile 7) on edge routers, you must complete the following tasks:

1. Assign a route policy in PIM to select a reverse-path forwarding (RPF) topology.
2. Configure route policy to set the MDT type to MLDP Inband.
3. Enable MLDP inband signaling in multicast routing.
4. Enable MPLS MLDP.

### Configuration

```

/* Assign a route policy in PIM to select a reverse-path forwarding (RPF) topology */

RP/0/RP0/CPU0:router(config)#router pim
RP/0/RP0/CPU0:router(config-pim)#address-family ipv4
RP/0/RP0/CPU0:router(config-pim-default-ipv4)#rpf topology route-policy rpf-global
RP/0/RP0/CPU0:router(config-pim-default-ipv4)#interface TenGigE 0/0/0/21
RP/0/RP0/CPU0:router(config-pim-ipv4-if)#enable

/* Configure route policy to set the MDT type to MLDP inband */

RP/0/RP0/CPU0:router(config)#route-policy rpf-global
RP/0/RP0/CPU0:router(config-rpl)#set core-tree mldp-inband
RP/0/RP0/CPU0:router(config-rpl)#end-policy

/* Enable MLDP-inband signaling in multicast routing */

RP/0/RP0/CPU0:router(config)#multicast-routing
RP/0/RP0/CPU0:router(config-mcast)#address-family ipv4
RP/0/RP0/CPU0:router(config-mcast-default-ipv4)#interface loopback 0
RP/0/RP0/CPU0:router(config-mcast-default-ipv4-if)#enable
RP/0/RP0/CPU0:router(config-mcast-default-ipv4-if)#exit
RP/0/RP0/CPU0:router(config-mcast-default-ipv4)#mdt source loopback 0
RP/0/RP0/CPU0:router(config-mcast-default-ipv4)#mdt mldp in-band-signaling ipv4
RP/0/RP0/CPU0:router(config-mcast-default-ipv4)#interface all enable

/* Enable MPLS MLDP */

RP/0/RP0/CPU0:router(config)#mpls ldp
RP/0/RP0/CPU0:router(config-ldp)#mldp

```

## Configuration Examples for Inband mLDP Profiles on Edge Routers

### Running Configuration for VRF MLDP In-Band Signaling (Profile 6)

```

router pim

```

```

vrf one
  address-family ipv4
    rpf topology route-policy rpf-vrf-one

  route-policy rpf-vrf-one
    set core-tree mldp-inband
  end-policy

multicast-routing
  vrf one
  address-family ipv4
    mdt source Loopback0
    mdt mldp in-band-signaling ipv4
  interface all enable

mpls ldp
  mldp

```

### Running Configuration for Global MLDP In-band Signaling (Profile 7)

```

router pim
  address-family ipv4
    rpf topology route-policy rpf-global
  interface TenGigE0/0/0/0
    enable

route-policy rpf-global
  set core-tree mldp-inband
end-policy

multicast-routing
  address-family ipv4
  interface Loopback0
    enable
  !
  mdt source Loopback0
  mdt mldp in-band-signaling ipv4
  interface all enable
  !

mpls ldp
  mldp

```

## Verification of MLDP Configuration on Edge Routers

Use the following commands to verify the MLDP configuration on edge routers.

To check the MLDP neighbors, use the **show mpls mldp neighbor** command.

```

RP/0/RP0/CPU0:Head# show mpls mldp neighbors
mLDP neighbor database
MLDP peer ID       : 2.2.2.2:0, uptime 07:47:59 Up,
Capabilities       : GR, Typed Wildcard FEC, P2MP, MP2MP
Target Adj        : No
Upstream count    : 1
Branch count      : 1
LDP GR            : Enabled
                  : Instance: 1
Label map timer   : never
Policy filter in  :
Path count        : 1

```

```

Path(s)           : 12.1.1.2           TenGigE0/0/1/0/3.2000 LDP
Adj list          : 12.1.1.2           TenGigE0/0/1/0/3.2000
Peer addr list    : 2.25.32.2
                  : 2.2.2.2
                  : 11.1.1.1
                  : 12.1.1.2
                  : 13.10.1.1

```

To display the contents of the Label Information Base (LIB), use the **show mpls mldp bindings** command.

```

RP/0/RP0/CPU0:Head#show mpls mldp bindings
mLDP MPLS Bindings database

LSP-ID: 0x00001 Paths: 7 Flags:
0x00001 P2MP 5.5.5.5 [vpnv6 1:1 2015:1:1::3 ff3e::1]
  Local Label: 70009
  Remote Label: 64018 NH: 12.1.1.2 Inft: TenGigE0/0/1/0/3.2000
  Remote Label: 64022 NH: 50.1.1.1 Inft: TenGigE0/0/1/3/0
  Remote Label: 30002 NH: 30.10.1.2 Inft: Bundle-Ether56
  Remote Label: 64023 NH: 60.1.1.2 Inft: HundredGigE0/0/1/1
  Remote Label: 64024 NH: 70.1.1.1 Inft: TenGigE0/0/1/2/0
  Remote Label: 64022 NH: 40.1.1.1 Inft: TenGigE0/0/0/18

```

To display the MLDP event traces, use the **show mpls mldp trace** command.

```

RP/0/RP0/CPU0:Head#show mpls mldp trace
3535 wrapping entries (631040 possible, 35584 allocated, 0 filtered, 3535 total)
May 30 23:30:21.121 MLDP GLO 0/RP0/CPU0 t6746 GEN : Trace pre-init iox success
May 30 23:30:21.121 MLDP GLO 0/RP0/CPU0 t6746 GEN : Debug pre-init iox success
May 30 23:30:21.121 MLDP GLO 0/RP0/CPU0 t6746 GEN : API pre-init iox success
May 30 23:30:21.121 MLDP GLO 0/RP0/CPU0 t6746 GEN : Bitfield pre-init iox success
May 31 12:08:39.465 MLDP GLO 0/RP0/CPU0 t6746 GEN : mldp_evm 0x563de8f01698 allocated
May 31 12:08:39.465 MLDP GLO 0/RP0/CPU0 t6746 GEN : EVM init iox success
May 31 12:08:39.472 MLDP GLO 0/RP0/CPU0 t6746 GEN : Registered EDM on active success
May 31 12:08:39.472 MLDP GLO 0/RP0/CPU0 t6746 GEN : EDM Ac/St init iox again
May 31 12:08:39.472 MLDP GLO 0/RP0/CPU0 t6746 GEN : Registered EDM Location on active
success
May 31 12:08:39.472 MLDP GLO 0/RP0/CPU0 t6746 GEN : EDM Loc init iox success
May 31 12:08:39.475 MLDP GLO 0/RP0/CPU0 t6746 GEN : LMRIB init iox success
May 31 12:08:39.475 MLDP GLO 0/RP0/CPU0 t18944 MRIB : MRIB connection established
May 31 12:08:39.475 MLDP GLO 0/RP0/CPU0 t6746 GEN : Interface manager init iox success
May 31 12:08:39.475 MLDP GLO 0/RP0/CPU0 t6746 GEN : Async init iox success
May 31 12:08:39.475 MLDP GLO 0/RP0/CPU0 t6746 GEN : Boolean init iox success
May 31 12:08:39.475 MLDP GLO 0/RP0/CPU0 t6746 GEN : Timers init iox success
May 31 12:08:39.479 MLDP GLO 0/RP0/CPU0 t6746 GEN : RUMP init iox success
May 31 12:08:39.479 MLDP GLO 0/RP0/CPU0 t6746 GEN : Chunks init iox success
May 31 12:08:39.509 MLDP ERR 0/RP0/CPU0 t6746 RIB : RIB not ready
May 31 12:08:39.509 MLDP ERR 0/RP0/CPU0 t6746 RIB : RIB not ready
May 31 12:08:39.512 MLDP GLO 0/RP0/CPU0 t6746 GEN : mldp_ens_event_ctx_chunk is NULL
May 31 12:08:39.512 MLDP GLO 0/RP0/CPU0 t6746 GEN : Context Table init iox success
May 31 12:08:39.512 MLDP GLO 0/RP0/CPU0 t6746 GEN : mldp_rib_main_evm 0x563de8fd23e8
allocated
May 31 12:08:39.512 MLDP GLO 0/RP0/CPU0 t6746 GEN : RIB Thread EVM init rib success
May 31 12:08:39.512 MLDP GLO 0/RP0/CPU0 t6746 GEN : RIB Thread Chunk init rib success
May 31 12:08:39.512 MLDP GLO 0/RP0/CPU0 t6746 GEN : RIB Thread queue init rib success
May 31 12:08:39.512 MLDP GLO 0/RP0/CPU0 t6746 RIB : Bound to RIB, fd: 354

```

## Restrictions for MVPN Profiles

The following restriction applies to the configuration of MVPN profile:

- A router being Route Reflector (RR) and Provider Edge (PE) at that same time for BGP mVPN implementation is not supported, a type 7 and type 6 IPv4 mVPN route is not advertised by a RR, which is also a PE router, if the PE router has the VRF locally configured and when there is a local receiver. Use full mesh for iBGP mVPN address-family or elect any core (P) router to be the RR.

## Configuration Examples for MVPN Profiles

This section provides profile-wise configuration examples for the various MVPN profiles.

### Configuration Examples for Inband mLDP Profiles

Profile-6: VRF Inband mLDP

```
router bgp 100
  mvpn
  !
multicast-routing
  vrf v6l
  address-family ipv4
    mdt source Loopback0
    mdt mtu 1600
    mdt mldp in-band-signaling ipv4
    interface all enable
  !
  address-family ipv6
    mdt mtu 1600
    mdt mldp in-band-signaling ipv4
    interface all enable
  !
  !
router pim
  vrf v6l
  address-family ipv4
    rpf topology route-policy mldp-inband
  !
  address-family ipv6
    rpf topology route-policy mldp-inband
  !
  !
route-policy mldp-inband
  set core-tree mldp-inband
end-policy
!
```

Profile-7: Global Inband mLDP

```
multicast-routing
  address-family ipv4
    mdt source Loopback0
    mdt mldp in-band-signaling ipv4
    ssm range Global-SSM-Group
  interface all enable
```

```
!  
address-family ipv6  
  mdt source Loopback0  
  mdt mldp in-band-signaling ipv4  
  ssm range Global-SSM-Group-V6  
  interface all enable  
!  
router pim  
  address-family ipv4  
    rpf topology route-policy mldp-inband  
  !  
  address-family ipv6  
    rpf topology route-policy mldp-inband  
  !  
  !  
route-policy mldp-inband  
  set core-tree mldp-inband  
end-policy  
!
```



## CHAPTER 2

# Implementing IGMP Snooping

Internet Group Management Protocol (IGMP) snooping restricts multicast flows at Layer 2 to only those segments with at least one interested receiver. This module describes how to implement IGMP snooping.



**Note** Multicast traffic without Spanning-Tree protocol is supported at Layer 2 for multicast traffic without snooping enabled.

- [Prerequisites for IGMP Snooping, on page 57](#)
- [Supported Features and Restrictions for IGMP Snooping, on page 57](#)
- [IGMP Snooping Overview, on page 59](#)
- [IGMP Snooping Configuration Profiles, on page 62](#)
- [Default IGMP Snooping Configuration Settings, on page 64](#)
- [IGMP Snooping Configuration at the Bridge Domain Level, on page 65](#)
- [Multicast over Integrated Routing Bridging Active/Active Multihome, on page 66](#)
- [How to Configure IGMP Snooping, on page 66](#)
- [Configuration Examples for IGMP Snooping, on page 72](#)
- [Additional References, on page 79](#)

## Prerequisites for IGMP Snooping

Before implementing IGMP snooping, make sure that the network is configured with a Layer 2 VPN (L2VPN).

## Supported Features and Restrictions for IGMP Snooping

- EVPN dual-homed Active Active (AA) IGMP State Sync using IGMP snooping profile is supported.
- BVI under bridge domain is supported.
- IGMP snooping is supported only under L2VPN bridge domains.
- Explicit host tracking (an IGMPv3 snooping feature) is not supported.
- IPv6 Multicast Listener Discovery (MLD) snooping is not supported.
- IGMPv1 is not supported.

- IGMP snooping with VPLS on bridge domain is not supported.
- IGMP snooping over access and core Pseudo-wire is not supported.
- ISSU is not supported on Layer 2 Multicast.
- IGMPv3-exclude is not supported in EVPN multi-homing or proxy scenarios.
- For EVPN AA, IGMPv2 and IGMPv3 joins for same groups are not supported.
- **router-alert-check disable** configuration command is not supported.
- EVPN dual-home source AA is supported only on NCS 540 series router.
- EVPN configuration must have the **control-word-disable** configuration.
- PIM control packets (join and hello) processing is not supported when snooping is enabled, so a multicast router selection based on PIM packets won't occur.
- In an EVPN dual-home AA scenario:
  - If the multicast source and receiver are in the same bridge domain (BD), the receiver might receive permanent traffic duplication.
  - In an EVPN dual-home receiver AA scenario, transient traffic duplication is expected when the DH node role changes from DF to nDF and vice versa.
  - Source=ESI1=BE-X.A, Receiver=ESI1=BE-X.B under the same BD is not supported (where X.A and X.B represent two AC ports for the bundle interface BE).
  - Source=ESI1=BE-X.A (for NCS 5700 line cards), Receiver=ESI2=BE-Y.A (for NCS 5500 line cards) under the same BD is not supported (where X.A and Y.A represent two AC ports for the bundle interface BE).



**Note** IPv4 multicast is supported for a multicast source that is behind the BVI interface. For example, the below configuration shows how to configure source behind BVI for IPv4 multicast:

```
l2vpn
bridge group 1
  bridge-domain 1
    multicast-source ipv4
    igmp snooping profile grp1
  !
  interface TenGigE0/0/0/3.32
  !
  routed interface BVI1
```

IGMP snooping for bridge domains without Bridged Virtual Interface (BVI) is supported with the following design consideration: You must configure the multicast-source ipv4 command in the source switch where bridge domain and IGMP snooping are enabled.



# IGMP Snooping Overview

## Description of Basic Functions

IGMP snooping provides a way to constrain multicast traffic at Layer 2. By snooping the IGMP membership reports sent by hosts in the bridge domain, the IGMP snooping application can set up Layer 2 multicast forwarding tables to deliver traffic only to ports with at least one interested member, significantly reducing the volume of multicast traffic.

Configured at Layer 3, IGMP provides a means for hosts in an IPv4 multicast network to indicate which multicast traffic they are interested in and for routers to control and limit the flow of multicast traffic in the network at Layer 3.

IGMP snooping uses the information in IGMP membership report messages to build corresponding information in the forwarding tables to restrict IP multicast traffic at Layer 2. The forwarding table entries are in the form <Route, OIF List>, where:

- Route is a <\*, G> route or <S, G> route, where \* is any source, G is group and S is the source.
- OIF List comprises all bridge ports that have sent IGMP membership reports for the specified route plus all multicast router (mrouter) ports in the bridge domain.

Implemented in a multicast network, IGMP snooping has the following attributes:

- In its basic form, it reduces bandwidth consumption by reducing multicast traffic that would otherwise flood an entire VPLS bridge domain.
- With the use of some optional configurations, it provides security between bridge domains by filtering the IGMP reports received from hosts on one bridge port and preventing leakage towards the hosts on other bridge ports.
- Using optional configurations, reduces the traffic impact on upstream IP multicast routers by suppressing IGMP membership reports (IGMPv2) or by acting as an IGMP proxy reporter (IGMPv3) to the upstream IP multicast router.

## High Availability Features

All high availability features apply to the IGMP snooping processes with no additional configuration beyond enabling IGMP snooping. The following high availability features are supported:

- Process restarts
- RP Failover
- Stateful Switch-Over (SSO)
- Non-Stop Forwarding (NSF)—Forwarding continues unaffected while the control plane is restored following a process restart or route processor (RP) failover.
- Line card online insertion and removal (OIR)

## Bridge Domain Support

IGMP snooping operates at the bridge domain level. When IGMP snooping is enabled on a bridge domain, the snooping functionality applies to all ports under the bridge domain, including:

- Physical ports under the bridge domain.
- Ethernet flow points (EFPs)—An EFP can be a VLAN, VLAN range, list of VLANs, or an entire interface port.
- Ethernet bundles—Ethernet bundles include IEEE 802.3ad link bundles and Cisco EtherChannel bundles. From the perspective of the IGMP snooping application, an Ethernet bundle is just another EFP. The forwarding application in the Cisco NCS 540 Series Routers randomly nominates a single port from the bundle to carry the multicast traffic.




---

**Note** The **efp-visibility** configuration is required when a bridge has attachment circuits as VLAN sub-interfaces from the same bundle-ether or physical interface.

---

IGMP snooping for bridge domains without Bridged Virtual Interface (BVI) is supported with the following design consideration:

You must configure the **multicast-source ipv4** command in the source switch where IGMP snooping is enabled as seen in the following example:

```
l2vpn
bridge group 1
bridge-domain 1
multicast-source ipv4
igmp snooping profile grp1
!
interface TenGigE0/0/0/3.31 //Source
!
interface TenGigE0/0/0/3.32
!
routed interface BVI1
```

## Multicast Router and Host Ports

IGMP snooping classifies each port (for example, EFPs, PWs, physical ports, or EFP bundles) as one of the following:

- Multicast router ports (mrouter ports)—These are ports to which a multicast-enabled router is connected. Mrouter ports are usually dynamically discovered, but may also be statically configured. Multicast traffic is always forwarded to all mrouter ports, except when an mrouter port is the ingress port.
- Host ports—Any port that is not an mrouter port is a host port.

## Multicast Traffic Handling within a Bridge Domain with IGMP Snooping Enabled

The following tables describe traffic handling behaviors by IGMP snooping mrouter and host ports. [Table 5: Multicast Traffic Handling for an IGMPv2 Querier, on page 61](#) describes traffic handling for an IGMPv2

querier. [Table 6: Multicast Traffic Handling for an IGMPv3 Querier, on page 61](#) applies to an IGMPv3 querier.

By default, IGMP snooping supports IGMPv2 and IGMPv3. The version of the IGMP querier discovered in the bridge domain determines the operational version of the snooping processes. If you change the default, configuring IGMP snooping to support a minimum version of IGMPv3, IGMP snooping ignores any IGMPv2 queriers.

**Table 5: Multicast Traffic Handling for an IGMPv2 Querier**

| Traffic Type                | Received on MRouter Ports  | Received on Host Ports   |
|-----------------------------|--|--|
| IP multicast source traffic | Forwards to all mrouter ports and to host ports that indicate interest.  | Forwards to all mrouter ports and to host ports that indicate interest.  |
| IGMP general queries        | Forwards to all ports.   | —  |
| IGMP group-specific queries | Forwards to all other mrouter ports.   | Dropped  |
| IGMPv2 joins                | Examines (snoops) the reports. <ul style="list-style-type: none"> <li>• If report suppression is enabled, forwards first join for a new group or first join following a general query for an existing group.</li> <li>• If report suppression is disabled, forwards on all mrouter ports.</li> </ul> | Examines (snoops) the reports. <ul style="list-style-type: none"> <li>• If report suppression is enabled, forwards first join for a new group or first join following a general query for an existing group.</li> <li>• If report suppression is disabled, forwards on all mrouter ports.</li> </ul> |
| IGMPv3 reports              | Ignores  | Ignores  |
| IGMPv2 leaves               | Invokes last member query processing.  | Invokes last member query processing.  |

**Table 6: Multicast Traffic Handling for an IGMPv3 Querier**

| Traffic Type                | Received on MRouter Ports   | Received on Host Ports  |
|-----------------------------|---|---|
| IP multicast source traffic | Forwards to all mrouter ports and to host ports that indicate interest. | Forwards to all mrouter ports and to host ports that indicate interest. |
| IGMP general queries        | Forwards to all ports.  | —   |
| IGMP group-specific queries | If received on the querier port floods on all ports.                    | —   |
| IGMPv2 joins                | Handles as IGMPv3 IS_EX{} reports.                                      | Handles as IGMPv3 IS_EX{} reports.                                      |

| Traffic Type   | Received on MRouter Ports  | Received on Host Ports   |
|----------------|--|--|
| IGMPv3 reports | <ul style="list-style-type: none"> <li>• If proxy reporting is enabled—For state changes or source-list changes, generates a state change report on all mrouter ports.</li> <li>• If proxy reporting is disabled—Forwards on all mrouter ports.</li> </ul> | <ul style="list-style-type: none"> <li>• If proxy reporting is enabled—For state changes or source-list changes, generates a state change report on all mrouter ports.</li> <li>• If proxy reporting is disabled—Forwards on all mrouter ports.</li> </ul> |
| IGMPv2 leaves  | Handles as IGMPv3 IS_IN{} reports.   | Handles as IGMPv3 IS_IN{} reports.   |

## IGMP Snooping Configuration Profiles

To enable IGMP snooping on a bridge domain, you must attach a profile to the bridge domain. The minimum configuration is an empty profile if BVI is configured. An empty profile enables the default configuration options and settings for IGMP snooping, as listed in the [Default IGMP Snooping Configuration Settings, on page 64](#).



**Note** The **internal-querier** is a requirement under the IGMP snooping profile if BVI is not configured under L2VPN.

### Configuration Example:

```
igmp snooping profile igmpsn
  internal-querier
!
```

You can attach IGMP snooping profiles to bridge domains or to ports under a bridge domain. The following guidelines explain the relationships between profiles attached to ports and bridge domains:

- Any IGMP Snooping profile attached to a bridge domain, even an empty profile, enables IGMP snooping. To disable IGMP snooping, detach the profile from the bridge domain.
- An empty profile configures IGMP snooping on the bridge domain and all ports under the bridge using default configuration settings.
- A bridge domain can have only one IGMP snooping profile attached to it (at the bridge domain level) at any time.
- Port profiles are not in effect if the bridge domain does not have a profile attached to it.
- IGMP snooping must be enabled on the bridge domain for any port-specific configurations to be in effect.
- If a profile attached to a bridge domain contains port-specific configuration options, the values apply to all of the ports under the bridge, including all mrouter and host ports, unless another port-specific profile is attached to a port.
- When a profile is attached to a port, IGMP snooping reconfigures that port, disregarding any port configurations that may exist in the bridge-level profile.

## Creating Profiles

To create a profile, use the **igmp snooping profile** command in global configuration mode.

## Attaching and Detaching Profiles

To attach a profile to a bridge domain, use the **igmp snooping profile** command in l2vpn bridge group bridge domain configuration mode. To attach a profile to a port, use the **igmp snooping profile** command in the interface configuration mode under the bridge domain. To detach a profile, use the **no** form of the command in the appropriate configuration mode.

When you detach a profile from a bridge domain or a port, the profile still exists and is available for use at a later time. Detaching a profile has the following results:

- If you detach a profile from a bridge domain, IGMP snooping is deactivated in the bridge domain.
- If you detach a profile from a port, IGMP snooping configuration values for the port are instantiated from the bridge domain profile.

## Changing Profiles

You cannot make changes to an active profile. An active profile is one that is currently attached.

- If the active profile is configured under the bridge, you must detach it from the bridge, and reattach it.
- If the active profile is configured under a specific bridge port, you must detach it from the bridge port, and reattach it.

Another way to do this is to create a new profile incorporating the desired changes and attach it to the bridges or ports, replacing the existing profile. This deactivates IGMP snooping and then reactivates it with parameters from the new profile.

# Default IGMP Snooping Configuration Settings

*Table 7: IGMP Snooping Default Configuration Values*

| Scope         | Feature                     | Default Value   |
|---------------|-----------------------------|---|
| Bridge Domain | IGMP snooping               | Disabled on a bridge domain until an enabling IGMP snooping profile is attached to the bridge domain.   |
|               | internal querier            | By default Internal Querier is disabled. To enable Internal Querier, add it to the IGMP snooping profile. Internal Querier is not recommended, when BVI and IGMP snooping is configured under a bridge. |
|               | last-member-query-count     | 2   |
|               | last-member-query-interval  | 1000 (milliseconds)   |
|               | minimum-version             | 2 (supporting IGMPv2 and IGMPv3)  |
|               | querier query-interval      | 60 (seconds)<br><b>Note</b> This is a nonstandard default value.  |
|               | report-suppression          | Enabled (enables report suppression for IGMPv2 and proxy-reporting for IGMPv3)  |
|               | querier robustness-variable | 2   |
|               | router alert check          | Enabled   |
|               | tcn query solicit           | Disabled  |
|               | tcn flood                   | Enabled   |
|               | ttl-check                   | Enabled   |
|               | unsolicited-report-timer    | 1000 (milliseconds)   |
| Port          | immediate-leave             | Disabled  |
|               | mrouter                     | No static mrouter configured; dynamic discovery occurs by default.  |
|               | router guard                | Disabled  |
|               | static group                | None configured   |

# IGMP Snooping Configuration at the Bridge Domain Level

## IGMP Minimum Version

The **minimum-version** command determines which IGMP versions are supported by IGMP snooping in the bridge domain:

- When minimum-version is 2, IGMP snooping intercepts IGMPv2 and IGMPv3 messages. This is the default value.
- When minimum-version is 3, IGMP snooping intercepts only IGMPv3 messages and drops all IGMPv2 messages.

IGMPv1 is not supported. The scope for this command is the bridge domain. The command is ignored in a profile attached to a port.

## Group Membership Interval, Robustness Variable, and Query Interval

The group membership interval (GMI) controls when IGMP snooping expires stale group membership states. The **show igmp snooping group** command shows groups with an expiry time of 0 until that stale state is cleaned up following the next query interval.

The GMI is calculated as:

$$\text{GMI} = (\text{robustness-variable} * \text{query-interval}) + \text{maximum-response-time}$$

where:

- maximum-response-time (MRT) is the amount of time during which receivers are required to report their membership state.
- robustness-variable is an integer used to influence the calculated GMI.
- query-interval is the amount of time between general queries.

Values for the components in the GMI are obtained as follows:

- MRT is advertised in the general query, for both IGMPv2 and IGMPv3.
- If the querier is running IGMPv2, IGMP snooping uses the IGMP-snooping-configured values for the robustness-variable and query-interval. These parameter values must match the configured values for the querier. In most cases, if you are interacting with other Cisco routers, you should not need to explicitly configure these values—the default values for IGMP snooping should match the default values of the querier. If they do not, use the **querier robustness-variable** and **querier query-interval** commands to configure matching values.
- IGMPv3 general queries convey values for robustness-variable and query-interval (QRV and QQI, respectively). IGMP snooping uses the values from the query, making the IGMP snooping GMI exactly match that of the querier.

# Multicast over Integrated Routing Bridging Active/Active Multihome

Multicast over integrated routing bridging active/active multihome feature enables the routers to quickly and safely switch traffic between routers, during failure, without any traffic loss. This feature comprises of the following four sub features that work together as a solution:

- First, IGMPv2 snooping is enabled for the peer routers to know which Layer 2 interface has receiver interested in a particular group.
- After snooping, this information is synced to the peer routers with the Layer 2 EVPN sync feature.
- After both peer routers are synced, they act like a last hop router and send PIM join upstream.
- Once the traffic arrives on both the peer routers, only one peer router forwards the traffic to the receiver with the designated forwarder election feature.

## How to Configure IGMP Snooping

The first two tasks are required to configure basic IGMP snooping configuration.

### Creating an IGMP Snooping Profile

#### Procedure

|               | Command or Action  | Purpose  |
|---------------|--|--|
| <b>Step 1</b> | <b>configure</b>   |  |
| <b>Step 2</b> | <b>igmp snooping profile</b> <i>profile-name</i><br><b>Example:</b><br><pre>RP/0/RP0/CPU0:router(config)# igmp snooping profile default-bd-profile</pre> | Enters IGMP snooping profile configuration mode and creates a named profile.<br><br>The default profile enables IGMP snooping. You can commit the new profile without any additional configurations, or you can include additional configuration options to the profile. You can also return to the profile later to add configurations, as described in other tasks in this module. |
| <b>Step 3</b> | Optionally, add commands to override default configuration values.   | If you are creating a bridge domain profile, consider the following: <ul style="list-style-type: none"> <li>• An empty profile is appropriate for attaching to a bridge domain. An empty profile enables IGMP snooping with default configuration values.</li> </ul>   |



|               | Command or Action | Purpose   |
|---------------|-------------------|---|
|               |                   | <ul style="list-style-type: none"> <li>You can optionally add more commands to the profile to override default configuration values.</li> <li>If you include port-specific configurations in a bridge domain profile, the configurations apply to all ports under the bridge, unless another profile is attached to a port.</li> </ul> <p>If you are creating a port-specific profile, consider the following:</p> <ul style="list-style-type: none"> <li>While an empty profile could be attached to a port, it would have no effect on the port configuration.</li> <li>When you attach a profile to a port, IGMP snooping reconfigures that port, overriding any inheritance of configuration values from the bridge-domain profile. You must repeat the commands in the port profile if you want to retain those configurations.</li> </ul> <p>You can detach a profile, change it, and reattach it to add commands to a profile at a later time.</p> |
| <b>Step 4</b> | <b>commit</b>     |   |

## Where to Go Next

You must attach a profile to a bridge domain or to a port to have it take effect. See one of the following tasks:

## Attaching a Profile and Activating IGMP Snooping on a Bridge Domain

To activate IGMP snooping on a bridge domain, attach an IGMP snooping profile to the bridge domain, as described in the following steps.

### Procedure

|               | Command or Action  | Purpose                                |
|---------------|--|--|
| <b>Step 1</b> | <b>configure</b>   |  |
| <b>Step 2</b> | <b>l2vpn</b><br><br><b>Example:</b><br><br>RP/0/RP0/CPU0:router(config)# l2vpn | Enters Layer 2 VPN configuration mode. |

|               | Command or Action  | Purpose  |
|---------------|--|--|
| <b>Step 3</b> | <b>bridge group</b> <i>bridge-group-name</i><br><b>Example:</b><br><pre>RP/0/RP0/CPU0:router(config-l2vpn)# bridge group GRP1</pre>                                  | Enters Layer 2 VPN VPLS bridge group configuration mode for the named bridge group.  |
| <b>Step 4</b> | <b>bridge-domain</b> <i>bridge-domain-name</i><br><b>Example:</b><br><pre>RP/0/RP0/CPU0:router(config-l2vpn-bg)# bridge-domain ISP1</pre>                            | Enters Layer 2 VPN VPLS bridge group bridge domain configuration mode for the named bridge domain.   |
| <b>Step 5</b> | <b>multicast-source ipv4</b><br><b>Example:</b><br><pre>RP/0/RP0/CPU0:router(config)# multicast-source ipv4</pre>  | Configures Layer 2 multicast routes with IGMP snooping.  |
| <b>Step 6</b> | <b>igmp snooping profile</b> <i>profile-name</i><br><b>Example:</b><br><pre>RP/0/RP0/CPU0:router(config-l2vpn-bg-bd)# igmp snooping profile default-bd-profile</pre> | Attaches the named IGMP snooping profile to the bridge domain, enabling IGMP snooping on the bridge domain.  |
| <b>Step 7</b> | <b>commit</b>  |  |
| <b>Step 8</b> | <b>show igmp snooping bridge-domain detail</b><br><b>Example:</b><br><pre>RP/0/RP0/CPU0:router# show igmp snooping bridge-domain detail</pre>                        | (Optional) Verifies that IGMP snooping is enabled on a bridge domain and shows the IGMP snooping profile names attached to bridge domains and ports. |
| <b>Step 9</b> | <b>show l2vpn bridge-domain detail</b><br><b>Example:</b><br><pre>RP/0/RP0/CPU0:router# show l2vpn bridge-domain</pre>   | (Optional) Verifies that IGMP snooping is implemented in the forwarding plane (Layer 2) on a bridge domain.  |

## Detaching a Profile and Deactivating IGMP Snooping on a Bridge Domain

To deactivate IGMP snooping on a bridge domain, remove the profile from the bridge domain using the following steps.



**Note** A bridge domain can have only one profile attached to it at a time.

#### Procedure

|               | Command or Action   | Purpose  |
|---------------|---|--|
| <b>Step 1</b> | <b>configure</b>  |  |
| <b>Step 2</b> | <b>l2vpn</b><br><br><b>Example:</b><br><br>RP/0/RP0/CPU0:router(config)# l2vpn  | Enters Layer 2 VPN configuration mode.   |
| <b>Step 3</b> | <b>bridge group</b> <i>bridge-group-name</i><br><br><b>Example:</b><br><br>RP/0/RP0/CPU0:router(config-l2vpn)#<br>bridge group GRP1           | Enters Layer 2 VPN VPLS bridge group configuration mode for the named bridge group.  |
| <b>Step 4</b> | <b>bridge-domain</b> <i>bridge-domain-name</i><br><br><b>Example:</b><br><br>RP/0/RP0/CPU0:router(config-l2vpn-bg)#<br>bridge-domain ISP1     | Enters Layer 2 VPN VPLS bridge group bridge domain configuration mode for the named bridge domain.   |
| <b>Step 5</b> | <b>no igmp snooping disable</b><br><br><b>Example:</b><br><br>RP/0/RP0/CPU0:router(config-l2vpn-bg-bd)#<br>no igmp snooping disable           | Detaches the IGMP snooping profile from the bridge domain, disabling IGMP snooping on that bridge domain.<br><br><b>Note</b> Only one profile can be attached to a bridge domain at a time. If a profile is attached, IGMP snooping is enabled. If a profile is not attached, IGMP snooping is disabled. |
| <b>Step 6</b> | <b>commit</b>   |  |
| <b>Step 7</b> | <b>show igmp snooping bridge-domain detail</b><br><br><b>Example:</b><br><br>RP/0/RP0/CPU0:router# show igmp snooping<br>bridge-domain detail | (Optional) Verifies that IGMP snooping is disabled on a bridge domain.   |

|               | Command or Action  | Purpose  |
|---------------|--|--|
| <b>Step 8</b> | <b>show l2vpn bridge-domain detail</b><br><br><b>Example:</b><br><br>RP/0/RP0/CPU0:router# show l2vpn<br>bridge-domain | (Optional) Verifies that IGMP snooping is disabled in the forwarding plane (Layer 2) on a bridge domain. |

## Attaching and Detaching Profiles to Ports Under a Bridge

### Before you begin

IGMP snooping must be enabled on the bridge domain for port-specific profiles to affect IGMP snooping behavior.

### Procedure

|               | Command or Action  | Purpose  |
|---------------|--|--|
| <b>Step 1</b> | <b>configure</b>   |  |
| <b>Step 2</b> | <b>l2vpn</b><br><br><b>Example:</b><br><br>RP/0/RP0/CPU0:router(config)# l2vpn   | Enters Layer 2 VPN configuration mode.   |
| <b>Step 3</b> | <b>bridge group <i>bridge-group-name</i></b><br><br><b>Example:</b><br><br>RP/0/RP0/CPU0:router(config-l2vpn)#<br>bridge group GRP1                      | Enters Layer 2 VPN bridge group configuration mode for the named bridge group.                                 |
| <b>Step 4</b> | <b>bridge-domain <i>bridge-domain-name</i></b><br><br><b>Example:</b><br><br>RP/0/RP0/CPU0:router(config-l2vpn-bg)#<br>bridge-domain ISP1                | Enters Layer 2 VPN bridge group bridge domain configuration mode for the named bridge domain.                  |
| <b>Step 5</b> | <b>interface <i>interface-type interface-number</i></b><br><br><b>Example:</b><br><br>RP/0/RP0/CPU0:router(config-l2vpn-bg-bd)#<br>interface gig 1/1/1/1 | Enters Layer 2 VPN VPLS bridge group bridge domain interface configuration mode for the named interface or PW. |
| <b>Step 6</b> | <b>multicast-source ipv4</b><br><br><b>Example:</b>  | Configures L2 multicast routes in L2 multicast with IGMP Snooping.   |

|                | Command or Action   | Purpose  |
|----------------|---|--|
|                | RP/0/RP0/CPU0:router(config)#<br>multicast-source ipv4  |  |
| <b>Step 7</b>  | Do one of the following: <ul style="list-style-type: none"> <li>• <b>igmp snooping profile</b> <i>profile-name</i></li> <li>• <b>no igmp snooping</b></li> </ul> <b>Example:</b><br><br>RP/0/RP0/CPU0:router(config-l2vpn-bg-bd-if)#<br>igmp snooping profile<br>mrouter-port-profile | Attaches the named IGMP snooping profile to the port.<br><br><b>Note</b> A profile on a port has no effect unless there is also a profile attached to the bridge.<br><br>The <b>no</b> form of the command detaches a profile from the port. Only one profile can be attached to a port. |
| <b>Step 8</b>  | <b>commit</b>   |  |
| <b>Step 9</b>  | <b>show igmp snooping bridge-domain detail</b><br><br><b>Example:</b><br><br>RP/0/RP0/CPU0:router# show igmp snooping<br>bridge-domain detail   | (Optional) Verifies that IGMP snooping is enabled on a bridge domain and shows the IGMP snooping profile names attached to bridge domains and ports.   |
| <b>Step 10</b> | <b>show l2vpn bridge-domain detail</b><br><br><b>Example:</b><br><br>RP/0/RP0/CPU0:router# show l2vpn<br>bridge-domain  | (Optional) Verifies that IGMP snooping is implemented in the forwarding plane (Layer 2) on a bridge domain.  |

## Verifying Multicast Forwarding

### Procedure

|               | Command or Action   | Purpose   |
|---------------|---|---|
| <b>Step 1</b> | <b>configure</b>  |   |
| <b>Step 2</b> | <b>show l2vpn forwarding bridge-domain</b><br><i>[bridge-group-name:bridge-domain-name]</i><br><b>mroute ipv4</b> <i>[group group_IPaddress ]</i><br><i>[hardware {ingress   egress}] [detail]location</i><br><i>node-id</i><br><br><b>Example:</b><br><br>RP/0/RP0/CPU0:router# show l2vpn<br>forwarding bridge-domain bg1:bd1 mroute<br>ipv4 group 234.192.4.1 hardware ingress<br>detail location 0/1/cPU0 | Displays multicast routes as they are converted into the forwarding plane forwarding tables. Use optional arguments to limit the display to specific bridge groups or bridge domains.<br><br>If these routes are not as expected, check the control plane configuration and correct the corresponding IGMP snooping profiles. |

|               | Command or Action  | Purpose  |
|---------------|--|--|
| <b>Step 3</b> | <b>show l2vpn forwarding bridge-domain</b><br><i>[bridge-group-name:bridge-domain-name]</i><br><b>mroute ipv4 summary location node-id</b><br><br><b>Example:</b><br><br>RP/0/RP0/CPU0:router# show l2vpn<br>forwarding bridge-domain bgl:bd1 mroute<br>ipv4 summary location 0/3/CPU0 | Displays summary-level information about multicast routes as stored in the forwarding plane forwarding tables. Use optional arguments to limit the display to specific bridge domains. |

## Configuration Examples for IGMP Snooping

The following examples show how to enable IGMP snooping on Layer 2 VPLS bridge domains on Cisco NCS 540 Series Routers:

### Configuring IGMP Snooping on Physical Interfaces Under a Bridge: Example

1. Create two profiles.

```
igmp snooping profile bridge_profile
!
igmp snooping profile port_profile
  mrouter
!
```

2. Configure two physical interfaces for L2 transport.

```
interface GigabitEthernet0/8/0/38
  negotiation auto
  l2transport
  no shut
!
!
interface GigabitEthernet0/8/0/39
  negotiation auto
  l2transport
  no shut
!
!
```

3. Add interfaces to the bridge domain. Attach bridge\_profile to the bridge domain and port\_profile to one of the Ethernet interfaces. The second Ethernet interface inherits IGMP snooping configuration attributes from the bridge domain profile.

```
l2vpn
  bridge group bgl
  bridge-domain bd1
  igmp snooping profile bridge_profile
  interface GigabitEthernet0/8/0/38
    igmp snooping profile port_profile
  interface GigabitEthernet0/8/0/39
```

```
!
!
!
```

4. Verify the configured bridge ports.

```
show igmp snooping port
```

## Configuring IGMP Snooping on VLAN Interfaces Under a Bridge: Example

1. Configure two profiles.

```
multicast-source ipv4
igmp snooping profile bridge_profile

igmp snooping profile port_profile
mrouter
!
```

2. Configure VLAN interfaces for L2 transport.

```
interface GigabitEthernet0/8/0/8
 negotiation auto
 no shut
!
!
interface GigabitEthernet0/8/0/8.1 l2transport
 encapsulation dot1q 1001
 rewrite ingress tag pop 1 symmetric
!
!
interface GigabitEthernet0/8/0/8.2 l2transport
 encapsulation dot1q 1002
 rewrite ingress tag pop 1 symmetric
!
!
```

3. Attach a profile and add interfaces to the bridge domain. Attach a profile to one of the interfaces. The other interface inherits IGMP snooping configuration attributes from the bridge domain profile.

```
l2vpn
 bridge group bg1
 bridge-domain bdl
 multicast-source ipv4
 igmp snooping profile bridge_profile
 interface GigabitEthernet0/8/0/8.1
 igmp snooping profile port_profile
 interface GigabitEthernet0/8/0/8.2

!
!
!
```

4. Verify the configured bridge ports.

```
show igmp snooping port
```

## Configuring IGMP Snooping on Ethernet Bundles Under a Bridge: Example

1. Configure two IGMP snooping profiles.

```
multicast-source ipv4
  igmp snooping profile bridge_profile
  !
multicast-source ipv4
  igmp snooping profile port_profile
  mrouter
  !
```

2. Configure interfaces as bundle member links.

```
interface GigabitEthernet0/0/0/0
  bundle id 1 mode on
  negotiation auto
  !
interface GigabitEthernet0/0/0/1
  bundle id 1 mode on
  negotiation auto
  !
interface GigabitEthernet0/0/0/2
  bundle id 2 mode on
  negotiation auto
  !
interface GigabitEthernet0/0/0/3
  bundle id 2 mode on
  negotiation auto
  !
```

3. Configure the bundle interfaces for L2 transport.

```
interface Bundle-Ether 1
  l2transport
  !
  !
interface Bundle-Ether 2
  l2transport
  !
  !
```

4. Add the interfaces to the bridge domain and attach IGMP snooping profiles.

```
l2vpn
  bridge group bg1
  bridge-domain bd1
  multicast-source ipv4
  igmp snooping profile bridge_profile
  interface bundle-Ether 1
```



```

        multicast-source ipv4
        igmp snooping profile port_profile
    interface bundle-Ether 2
    !
    !
    !

```

5. Verify the configured bridge ports.

```
show igmp snooping port
```

## Configuring Multicast over Integrated Routing Bridging Active/Active Multihome

### Configurations performed on peer 1:

#### 1. Layer 2 Base Configuration

```

hostname peer1
!
interface Bundle-Ether2
!
interface Bundle-Ether2.2 l2transport
 encapsulation dot1q 2
 rewrite ingress tag pop 1 symmetric
!
interface TenGigE0/0/0/0
 bundle id 2 mode on
 no shut
!

```

#### 2. EVPN Configuration

```

hostname peer1
!
router bgp 100
 bgp router-id 1.1.1.1
 bgp graceful-restart
 address-family l2vpn evpn
!
 neighbor 3.3.3.3
  remote-as 100
  update-source Loopback0
  address-family l2vpn evpn
!
!
!
evpn
 evi 2
  advertise-mac
  !
!
 interface Bundle-Ether2
  ethernet-segment
   identifier type 0 02.02.02.02.02.02.02.02
   bgp route-target 0002.0002.0002
!

```

```

!
!
3. IGMPv2 Snoop Configurations

```

```

hostname peer1
!
router igmp

    version 2
    !
    !
l2vpn
bridge group VLAN2
bridge-domain VLAN2
multicast-source ipv4
igmp snooping profile 1
interface Bundle-Ether2.2
!

    evi 2
    !
    !
!
multicast-source ipv4
igmp snooping profile 1
!

```

### Configurations Performed on Peer 2:

#### 1. Layer 2 Base Configuration

```

hostname peer2
!
interface Bundle-Ether2
!
interface Bundle-Ether2.2 l2transport
encapsulation dot1q 2
rewrite ingress tag pop 1 symmetric
!
interface TenGigE0/0/0/0
bundle id 2 mode on
no shut
!

```

#### 2. EVPN Configuration

```

hostname peer2
!
router bgp 100
bgp router-id 2.2.2.2
bgp graceful-restart
address-family l2vpn evpn
!
neighbor 3.3.3.3
remote-as 100
update-source Loopback0
address-family l2vpn evpn
!
!
!
evpn
evi 2
advertise-mac
!
!

```

```

interface Bundle-Ether2
  ethernet-segment
  identifier type 0 02.02.02.02.02.02.02.02
  bgp route-target 0002.0002.0002
!
!
!

```

### 3. IGMPv2 Snoop Configurations

```

hostname peer2
!
router igmp

  version 2
  !
  !
l2vpn
bridge group VLAN2
  bridge-domain VLAN2
  multicast-source ipv4
  igmp snooping profile 1
  interface Bundle-Ether2.2
  !

  evi 2
  !
  !
!
multicast-source ipv4
igmp snooping profile 1
!

```

## Verifying IGMP Snooping and EVPN Sync

In this example, the receiver sends an IGMPv2 join for the group 239.0.0.2. On Peer2, this group has a D Flag, that means the actual IGMP joined peer2, but not peer1. On Peer1, this group has a B flag, that means this group is learnt from BGP with the EVPN sync feature.

```

RP/0/RP0/CPU0:peer1#show igmp snooping group
Fri Aug 31 22:27:46.363 UTC

```

Key: GM=Group Filter Mode, PM=Port Filter Mode  
 Flags Key: S=Static, D=Dynamic, B=BGP Learnt, E=Explicit Tracking, R=Replicated

Bridge Domain VLAN10:VLAN10

| Group     | Ver | GM | Source | PM | Port  | Exp   | Flgs |
|-----------|-----|----|--------|----|-------|-------|------|
| ----      | --- | -- | -----  | -- | ----  | ---   | ---- |
| 239.0.0.2 | V2  | -  | *      | -  | BE2.2 | never | B    |

```

RP/0/RP0/CPU0:peer2#show igmp snooping group
Fri Aug 31 22:27:49.686 UTC

```

Key: GM=Group Filter Mode, PM=Port Filter Mode  
 Flags Key: S=Static, D=Dynamic, B=BGP Learnt, E=Explicit Tracking, R=Replicated

Bridge Domain VLAN10:VLAN10

| Group | Ver | GM | Source | PM | Port | Exp | Flgs |
|-------|-----|----|--------|----|------|-----|------|
|-------|-----|----|--------|----|------|-----|------|

```

-----
239.0.0.2      --- - - - - -
V2  -  *      -  BE2.2      ---  ---
                                     74  D

```

## Verifying Dual DR PIM Uplink

In this example, when the source 126.0.0.100 sends traffic to group 239.0.0.2, you see both Peer1 and Peer2 are sending PIM join upstream. The incoming interface for (\*,G) and (S,G) should be the interface toward the RP and source respectively. For both Peer1 and Peer2, the outgoing interface should be the BVI interface facing the receiver.

```

RP/0/RP0/CPU0:peer1#show mrib route
:
:

(*,239.0.0.2) RPF nbr: 30.0.0.4 Flags: C RPF
Up: 00:13:41
Incoming Interface List
  HundredGigE0/0/0/1 Flags: A NS, Up: 00:13:41
Outgoing Interface List
  BVI2 Flags: F NS LI, Up: 00:13:41

(126.0.0.100,239.0.0.2) RPF nbr: 30.0.0.4 Flags: RPF
Up: 00:03:34
Incoming Interface List
  HundredGigE0/0/0/1 Flags: A, Up: 00:03:34
Outgoing Interface List
  BVI2 Flags: F NS, Up: 00:03:34
:
:

RP/0/RP0/CPU0:peer2#show mrib route
:
:

(*,239.0.0.2) RPF nbr: 50.0.0.4 Flags: C RPF
Up: 00:13:33
Incoming Interface List
  HundredGigE0/0/0/2 Flags: A NS, Up: 00:13:33
Outgoing Interface List
  BVI2 Flags: F NS LI, Up: 00:13:33

(126.0.0.100,239.0.0.2) RPF nbr: 50.0.0.4 Flags: RPF
Up: 00:03:24
Incoming Interface List
  HundredGigE0/0/0/2 Flags: A, Up: 00:03:24
Outgoing Interface List
  BVI2 Flags: F NS, Up: 00:03:24
:
:

```

## Verifying Designated Forwarder Election

As described in the previous example, both peer1 and peer2 have BVI2 as outgoing interface. However, only one of the peer should forward the traffic. Designated forwarder election elects one of them to do the forwarding. In this example, peer2 is selected as the forwarder. Peer1 has Bundle-Ether2.2 marked as NDF.

```

RP/0/RP0/CPU0:peer1#show l2vpn forwarding bridge-domain VLAN2:VLAN2 mroute ipv4 hardware
ingress detail location 0/0/cPU0
Bridge-Domain: VLAN2:VLAN2, ID: 0
:
:

```

```

Bridge-Domain: VLAN2:VLAN2, ID: 0
  Prefix: (0.0.0.0,239.0.0.2/32)
  P2MP enabled: N
  IRB platform data: {0x0, 0x2d, 0x0, 0x0}, len: 32
  Bridge Port:
  EVPN, Xconnect id: 0x80000001 NH:2.2.2.2
  Bundle-Ether2.2, Xconnect id: 0xa0000015 (NDF)

RP/0/RP0/CPU0:peer2#show l2vpn forwarding bridge-domain VLAN2:VLAN2 mroute ipv4 hardware
ingress detail location 0/0/cPU0
:
:

Bridge-Domain: VLAN2:VLAN2, ID: 0
  Prefix: (0.0.0.0,239.0.0.2/32)
  P2MP enabled: N
  IRB platform data: {0x0, 0x30, 0x0, 0x0}, len: 32
  Bridge Port:
  EVPN, Xconnect id: 0x80000001 NH:1.1.1.1
  Bundle-Ether2.2, Xconnect id: 0xa0000029

```

## Additional References

### Related Documents

| Related Topic                    | Document Title  |
|----------------------------------|---|
| Configuring MPLS VPLS bridges    | Implementing Virtual Private LAN Services on Cisco IOS XR Software module in the <i>MPLS Configuration Guide for Cisco NCS 540 Series Routers</i> |
| Getting started information      |   |
| Configuring EFPs and EFP bundles | <i>Interface and Hardware Component Configuration Guide for Cisco NCS 540 Series Routers</i>  |

### Standards

| Standards <sup>1</sup>  | Title |
|---|-------|
| No new or modified standards are supported by this feature, and support for existing standards has not been modified by this feature. | —     |

<sup>1</sup> Not all supported standards are listed.

**MIBs**

| <b>MIBs</b>                    | <b>MIBs Link</b>   |
|--------------------------------|--|
| No MIBs support IGMP snooping. | To locate and download MIBs using Cisco IOS XR software, use the Cisco MIB Locator found at the following URL and choose a platform under the Cisco Access Products menu:<br><a href="http://cisco.com/public/sw-center/netmgmt/cmtk/mibs.shtml">http://cisco.com/public/sw-center/netmgmt/cmtk/mibs.shtml</a> |

**RFCs**

| <b>RFCs</b> | <b>Title</b>  |
|-------------|---|
| RFC-4541    | Considerations for Internet Group Management Protocol (IGMP) and Multicast Listener Discovery (MLD) Snooping Switches |

**Technical Assistance**

| <b>Description</b>  | <b>Link</b>   |
|---|---|
| The Cisco Technical Support website contains thousands of pages of searchable technical content, including links to products, technologies, solutions, technical tips, and tools. Registered Cisco.com users can log in from this page to access even more content. | <a href="http://www.cisco.com/techsupport">http://www.cisco.com/techsupport</a> |



## CHAPTER 3

# MLD Snooping

Multicast Listener Discovery (MLD) snooping provides a way to constrain multicast traffic at Layer 2. By snooping the MLD membership reports sent by hosts in the bridge domain, the MLD snooping application can set up Layer 2 multicast forwarding tables to deliver traffic only to ports with at least one interested member, significantly reducing the volume of multicast traffic.

MLD snooping uses the information in MLD membership report messages to build corresponding information in the forwarding tables to restrict IPv6 multicast traffic at Layer 2. The forwarding table entries are in the form <Route, OIF List>, where:

- Route is a <\*, G> route or <S, G> route.
- OIF List comprises all bridge ports that have sent MLD membership reports for the specified route plus all multicast router (mrouter) ports in the bridge domain.

For more information regarding MLD snooping, refer the *Multicast Configuration Guide for Cisco NCS 540 Series Routers*.

- [Prerequisites for MLD Snooping, on page 82](#)
- [Supported Features and Restrictions for MLD Snooping, on page 82](#)
- [Advantages of MLD Snooping , on page 83](#)
- [High Availability \(HA\) features for MLD, on page 83](#)
- [Bridge Domain Support for MLD, on page 83](#)
- [Multicast Router and Host Ports , on page 84](#)
- [Multicast Router Discovery for MLD, on page 84](#)
- [Multicast Traffic Handling for MLD, on page 84](#)
- [Multicast Listener Discovery over BVI, on page 85](#)
- [IPv6 Multicast Listener Discovery Snooping over BVI , on page 88](#)
- [Creating a MLD Snooping Profile, on page 89](#)
- [Deactivating MLD Snooping on a Bridge Domain, on page 90](#)
- [Configuring Static Mrouter Ports \(MLD\), on page 91](#)
- [Configuring Router Guard \(MLD\), on page 91](#)
- [Configuring Immediate-leave for MLD, on page 92](#)
- [Configuring Internal Querier for MLD, on page 93](#)
- [Configuring Static Groups for MLD, on page 94](#)
- [Configuring MLD Snooping, on page 96](#)
- [Configuring MLD Snooping on Ethernet Bundles, on page 97](#)

## Prerequisites for MLD Snooping

- The network must be configured with a layer2 VPN.
- You must be in a user group associated with a task group that includes the proper task IDs. The command reference guides include the task IDs required for each command. If you suspect user group assignment is preventing you from using a command, contact your AAA administrator for assistance.

## Supported Features and Restrictions for MLD Snooping

- BVI under bridge domain is supported.
- Receiver behind L2 ACs in the same L2 bridge domain is supported.
- Source behind L2 ACs in the same L2 bridge domain is only supported on NCS 5700 fixed port routers and NCS 5700 line cards [Mode: Compatibility; Native].
- MLDv1 not supported over BVI.
- EVPN MLD sync is not supported.
- VPLS is not supported.
- On the NCS 5700 line cards, MLD snooping can be enabled alongside IGMP snooping only.
- The **router-alert-check disable** configuration command is not supported.
- EVPN dual-home source AA is not supported on the NCS 5500 line cards line cards.
- Both IGMP and MLD snooping configurations are necessary to enable MLD snooping on the NCS 5700 line cards.
- EVPN configuration must have the **control-word-disable** configuration.
- PIM control packets (join and hello) processing is not supported when snooping is enabled, so a multicast router selection based on PIM packets won't occur.
- Explicit host tracking.
- Multicast Admission Control.
- Security filtering.
- Report rate limiting.
- Multicast router discovery.
- IPv6 multicast is not supported for a multicast source that is behind the BVI interface. For example, the below configuration is not supported:

```
l2vpn
bridge group 1
  bridge-domain 1
    multicast-source ipv6
    mld snooping profile grp1
```



- In an EVPN dual-home AA scenario:
  - If the multicast source and receiver are in the same bridge domain (BD), the receiver might receive permanent traffic duplication.
  - In an EVPN dual-home receiver AA scenario, transient traffic duplication is expected when the DH node role changes from DF to nDF and vice versa.
  - Source=ESI1=BE-X.A, Receiver=ESI1=BE-X.B under the same BD is not supported (where X.A and X.B represent two AC ports for the bundle interface BE).
  - Source=ESI1=BE-X.A (for NCS 5700 line cards), Receiver=ESI2=BE-Y.A (for NCS 5500 line cards) under the same BD is not supported (where X.A and Y.A represent two AC ports for the bundle interface BE).

## Advantages of MLD Snooping

- In its basic form, it reduces bandwidth consumption by reducing multicast traffic that would otherwise flood an entire VPLS bridge domain.
- With the use of some optional configurations, it provides security between bridge domains by filtering the MLD reports received from hosts on one bridge port and preventing leakage towards the hosts on other bridge ports.

## High Availability (HA) features for MLD

MLD supports the following HA features:

- Process restarts
- RP Failover
- Stateful Switch-Over (SSO)
- Non-Stop Forwarding (NSF)—Forwarding continues unaffected while the control plane is restored following a process restart or route processor (RP) failover.
- Line card online insertion and removal (OIR)

## Bridge Domain Support for MLD

MLD snooping operates at the bridge domain level. When MLD snooping is enabled on a bridge domain, the snooping functionality applies to all ports under the bridge domain, including:

- Physical ports under the bridge domain.
- Ethernet flow points (EFPs)—An EFP can be a VLAN, VLAN range, list of VLANs, or an entire interface port.

- Ethernet bundles—Ethernet bundles include IEEE 802.3ad link bundles and Cisco EtherChannel bundles. From the perspective of the MLD snooping application, an Ethernet bundle is just another EFP. The forwarding application in the Cisco NCS 540 Series Routers randomly nominates a single port from the bundle to carry the multicast traffic.



**Note** The **efp-visibility** configuration is required when a bridge has attachment circuits as VLAN sub-interfaces from the same bundle-ether or physical interface.

## Multicast Router and Host Ports

MLD snooping classifies each port as one of the following:

- Multicast router ports (mrouter ports)—These are ports to which a multicast-enabled router is connected. Mrouter ports are usually dynamically discovered, but may also be statically configured. Multicast traffic is always forwarded to all mrouter ports, except when an mrouter port is the ingress port.
- Host ports—Any port that is not an mrouter port is a host port.

## Multicast Router Discovery for MLD

MLD snooping discovers mrouter ports dynamically. You can also explicitly configure a port as an emrouter port.

- Discovery- MLD snooping identifies upstream mrouter ports in the bridge domain by snooping mld query messages and Protocol Independent Multicast Version 2 (PIMv2) hello messages. Snooping PIMv2 hello messages identifies mld nonqueriers in the bridge domain.
- Static configuration—You can statically configure a port as an mrouter port with the **mrouter** command in a profile attached to the port. Static configuration can help in situations when incompatibilities with non-Cisco equipment prevent dynamic discovery.

## Multicast Traffic Handling for MLD

The following tables describe the traffic handling behavior by MLD mrouter and host ports.

**Table 8: Multicast Traffic Handling for a MLDv1 Querier**

| Traffic Type                | Received on MRouter Ports   | Received on Host Ports  |
|-----------------------------|---|---|
| IP multicast source traffic | Forwards to all mrouter ports and to host ports that indicate interest. | Forwards to all mrouter ports and to host ports that indicate interest. |
| MLD general queries         | Forwards to all ports.  | —   |
| MLD group-specific queries  | Forwards to all other mrouter ports.                                    | Dropped   |

| Traffic Type  | Received on MRouter Ports  | Received on Host Ports   |
|---------------|--|--|
| MLDv1 joins   | Examines (snoops) the reports. <ul style="list-style-type: none"> <li>• If report suppression is enabled, forwards first join for a new group or first join following a general query for an existing group.</li> <li>• If report suppression is disabled, forwards on all mrouter ports.</li> </ul> | Examines (snoops) the reports. <ul style="list-style-type: none"> <li>• If report suppression is enabled, forwards first join for a new group or first join following a general query for an existing group.</li> <li>• If report suppression is disabled, forwards on all mrouter ports.</li> </ul> |
| MLDv2 reports | Ignores  | Ignores  |
| MLDv1 leaves  | Invokes last member query processing.  | Invokes last member query processing.  |

Table 9: Multicast Traffic Handling for a MLDv2 Querier

| Traffic Type                | Received on MRouter Ports  | Received on Host Ports   |
|-----------------------------|--|--|
| IP multicast source traffic | Forwards to all mrouter ports and to host ports that indicate interest.  | Forwards to all mrouter ports and to host ports that indicate interest.  |
| MLD general queries         | Forwards to all ports.   | —  |
| MLD group-specific queries  | If received on the querier port floods on all ports.   | —  |
| MLDv1 joins                 | Handles as MLDv2 IS_EX{} reports.  | Handles as MLDv2 IS_EX{} reports.  |
| MLDv2 reports               | <ul style="list-style-type: none"> <li>• If proxy reporting is enabled—For state changes or source-list changes, generates a state change report on all mrouter ports.</li> <li>• If proxy reporting is disabled—Forwards on all mrouter ports.</li> </ul> | <ul style="list-style-type: none"> <li>• If proxy reporting is enabled—For state changes or source-list changes, generates a state change report on all mrouter ports.</li> <li>• If proxy reporting is disabled—Forwards on all mrouter ports.</li> </ul> |
| MLDv1 leaves                | Handles as MLDv2 IS_IN{} reports.  | Handles as MLDv2 IS_IN{} reports.  |

## Multicast Listener Discovery over BVI

Multicast IPv6 packets received from core, which has BVI as forwarding interface, is forwarded to access over snooped L2 AC or interface.

**Note**

- As per MLDv2 RFC recommendation the MLDv2 reports should carry the Hop-by-Hop options header for the reports to get punted up.
- MLDv2 is supported over BVI only when BVI is configured as a forwarding interface.

**MLD and BVI Overview**

Routers use the Internet Group Management Protocol (IGMP) (IPv4) and Multicast Listener Discovery (MLD) (IPv6) to learn whether members of a group are present on their directly attached subnets. Hosts join multicast groups by sending IGMP or MLD report messages.

MLDv1 and MLDv2 are supported on NCS 540. However, MLDv2 is enabled when you configure MLD by default.

MLDv2 shares feature parity with IGMPv3 with respect to all supported interface types with the exception of PPoE and subinterfaces. MLDv2 enables a node to report interest in listening to packets only from specific multicast source addresses.

A BVI interface is a routed interface representing a set of interfaces (bridged) in the same L2 broadcast domain. MLD join messages coming in or out of this broadcast domain passes through the BVI interface.

## Configuration

This sample configuration shows how to configure BVI interface to join a multicast group and statically forward multicast traffic using MLDv2:

```
router# config
router (config)# router mld
router (config-mld)# vrf BVI
router (config-mld-vrf)# interface BVI100
router (config-mld-vrf-int)# join-group fe32::1 192::4
router (config-mld-vrf-int)# static-group fe32::2 192::4
router (config-mld-vrf-int)# commit
router (config-mld-vrf-int)# exit
router (config-mld-vrf)# exit
router (config-mld)# exit
router (config)# exit
```

**Verification**

Use the command **show mld bvi stats** and **show mld group bvi < num>** to verify the MLDv2 over BVI configuration:

```
router# show mld bvi stats
Thu Nov 22 13:58:34.474 UTC
AIPC buffers received           : 8365
AIPC buffer released           : 8365
AIPC messages send blocked     : 0
AIPC buffer release failed     : 0
AIPC NULL buffer handles       : 0
AIPC open notifications received : 0
AIPC close notifications received : 0
AIPC error notifications received : 0
AIPC LWM notifications received : 0
AIPC input waiting notifications received : 8308
```

```

AIPC send status notifications received : 2485
AIPC publish notifications received    : 0
AIPC queue full notifications received : 0
AIPC output notifications received     : 0
AIPC connect notifications received    : 1
IGMP protocol messages received       : 8365
IGMP Mrouter Add messages received    : 0
IGMP Mrouter Delete messages received : 0
IGMP Mrouter Sweep messages received  : 1
IGMP Mrouter Add messages transmitted : 13
IGMP Mrouter Delete messages transmitted : 22
IGMP Mrouter Sweep messages transmitted : 0
IGMP Mrouter Unknown messages received : 0
IGMP Mrouter Unknown messages transmitted : 0
AIPC transmission error                : 0
AIPC buffers transmitted               : 0
IGMP protocol buffers transmitted     : 2482
IGMP Mrouter buffers transmitted      : 3
IGMP Unknown buffers transmitted      : 0
IGMP WTX Msgs received                : 0
IGMP WTX Msgs sent                    : 0
IGMP WTX Msgs sent to protocol        : 0
IGMP WTX Msgs dropped due DC          : 99264
IGMP WTX Msgs dropped no memory       : 0
IGMP WTX Msgs freed                   : 0

```

```

router# show mld group bvi 100
Thu Nov 22 13:58:52.055 UTC
MLD Connected Group Membership

```

BVI100

```

Group Address : ff02::2
Last Reporter : fe80::1a33:9dff:fe3d:b73f
  Uptime : 03:31:07
  Expires : never
Group Address : ff02::d
Last Reporter : fe80::1a33:9dff:fe3d:b73f
  Uptime : 03:31:07
show mld group bvi 100
Thu Nov 22 13:58:52.055 UTC
MLD Connected Group Membership

```

BVI100

```

Group Address : ff02::2
Last Reporter : fe80::1a33:9dff:fe3d:b73f
  Uptime : 03:31:07
  Expires : never
Group Address : ff02::d
Last Reporter : fe80::1a33:9dff:fe3d:b73f
  Uptime : 03:31:07
  Expires : never
Group Address : ff02::16
Last Reporter : fe80::1a33:9dff:fe3d:b73f
  Uptime : 03:31:07
  Expires : never
Group Address : ff02::1:ff01:1
Last Reporter : fe80::1a33:9dff:fe3d:b73f
  Uptime : 01:59:20
  Expires : 00:04:01
Group Address : ff02::1:ff3d:b73f
Last Reporter : fe80::1a33:9dff:fe3d:b73f
  Uptime : 01:59:20

```

```

Expires : 00:04:01
Group Address : ff33::2:52:1:1
Last Reporter : fe80::5869
    Uptime : 03:30:49
    Expires : not used
Group Address : ff33::2:52:1:2
Last Reporter : fe80::5869
    Uptime : 03:30:49
    Expires : not used
Group Address : ff33::2:52:1:3
Last Reporter : fe80::5869
    Uptime : 03:30:49
    Expires : not used
Group Address : ff33::2:52:1:4
Last Reporter : fe80::5869
    Uptime : 03:30:49
    Expires : not used
Group Address : ff33::2:52:1:5
Last Reporter : fe80::5869
    Uptime : 03:30:49
    Expires : not used
Group Address : ff33::2:52:1:6
Last Reporter : fe80::5869
    Uptime : 03:30:49
    Expires : not used
Group Address : ff33::2:52:1:7
Last Reporter : fe80::5869
    Uptime : 03:30:49
    Expires : not used

```

## IPv6 Multicast Listener Discovery Snooping over BVI

Multicast Listener Discovery (MLD) snooping provides a way to constrain multicast traffic at L2. By snooping the MLD membership reports sent by hosts in the bridge domain, the MLD snooping application can set up L2 multicast forwarding tables. This table is later used to deliver traffic only to ports with at least one interested member, significantly reducing the volume of multicast traffic.

MLDv2 support over BVI enables implementing IPv6 multicast routing over a L2 segment of the network that is using an IPv6 VLAN. The multicast routes are bridged via BVI interface from L3 segment to L2 segment of the network.

MLDv2 snooping over BVI enables forwarding MLDv2 membership reports received over the L2 domain to MLD snooping instead of MLD.

### Restrictions

- You cannot configure `ttl-check` and disable `router-alert-check` on the router for mld messages.
- Static mrouters are not supported for MLD snooping.
- Querier is supported for MLDV2, but it is not supported on MLDV1.

## Configuring Internal Querier for MLD Snooping

This configuration enables a multicast router acting as a MLD querier to send out group-and-source-specific query:

```

router# config
RP/0/RP0/CPU0:router(config)# mld snooping profile grp1
RP/0/RP0/CPU0:router(config-mld-snooping-profile)# system-ip-address fe80::1 link-local
RP/0/RP0/CPU0:router(config-mld-snooping-profile)# internal-querier
RP/0/RP0/CPU0:router(config-mld-snooping-profile)# commit

```

### Verification

Use the **show mld snooping profile detail** command to verify the MLD snooping configuration:

```

router# show mld snooping profile detail
Thu Nov 22 13:58:18.844 UTC
MLD Snoop Profile grp1:
  System IP Address:          fe80::1
  Bridge Domain References:    2
  Port References:            12

MLD Snoop Profile grp10:
  System IP Address:          fe80::5610
  Bridge Domain References:    0
  Port References:            0

```

## Creating a MLD Snooping Profile

### Configuration

```

/* Enter the global configuration mode */
RP/0/RP0/CPU0:router # configure
/* Enters MLD snooping profile configuration mode and creates a named profile. */
RP/0/RP0/CPU0:router(config)# mld snooping profile default-bd-profile
RP/0/RP0/CPU0:router # commit

```

The default profile enables MLD snooping. You can commit the new profile without any additional configurations, or you can include additional configuration options to the profile. You can also return to the profile later to add configurations, as described in other tasks in this module.

If you are creating a bridge domain profile, consider the following:

- An empty profile is appropriate for attaching to a bridge domain. An empty profile enables MLD snooping with default configuration values.
- You can optionally add more commands to the profile to override default configuration values.
- If you include port-specific configurations in a bridge domain profile, the configurations apply to all ports under the bridge, unless another profile is attached to a port.

If you are creating a port-specific profile, consider the following:

- While an empty profile could be attached to a port, it would have no effect on the port configuration.
- When you attach a profile to a port, MLD snooping reconfigures that port, overriding any inheritance of configuration values from the bridge-domain profile. You must repeat the commands in the port profile if you want to retain those configurations.

You can detach a profile, change it, and reattach it to add commands to a profile at a later time.

### Running Configuration

```
RP/0/RP0/CPU0:router(config)# show running-config
configuration
    mld snooping profile default-bd-profile
!
```

### Verification

Verify that the MLD snooping profile is created:

```
RP/0/RP0/CPU0:router#show mld snooping profile
```

| Profile                   | Bridge Domain | Port |
|---------------------------|---------------|------|
| -----                     | -----         | ---- |
| <b>default-bd-profile</b> | 0             | 0    |
| grp1                      | 1             | 2    |
| grp10                     | 1             | 2    |

## Deactivating MLD Snooping on a Bridge Domain

To deactivate MLD snooping from a bridge domain, remove the profile from the bridge domain:




---

**Note** A bridge domain can have only one profile attached to it at a time.

---

### Configuration

```
/* Enter the global configuration mode followed by the bridge group and the bridge domain
mode */
RP0/0/RP0/CPU0:router# configuration
RP0/0/RP0/CPU0:router(config)# l2vpn
RP0/0/RP0/CPU0:router(config-l2vpn)# bridge group GRP1
RP0/0/RP0/CPU0:router(config-l2vpn-bg)# bridge domain ISP1

/* Detache the MLD snooping profile from the bridge domain. This disables MLD snooping on
that bridge domain */
/* Note: Only one profile can be attached to a bridge domain at a time. If a profile is
attached, MLD snooping is enabled.
If a profile is not attached, MLD snooping is disabled. */
RP0/0/RP0/CPU0:router(config-l2vpn-bg-bd)# no mld snooping profile
RP0/0/RP0/CPU0:router(config-l2vpn-bg-bd)# commit
```

### Running Configuration

```
RP0/0/RP0/CPU0:router# show running-config
configuration
l2vpn
    bridge-group GRP1
        bridge-domain ISP1
            no mld snooping profile
!
```



# Configuring Static Mrouter Ports (MLD)

## Prerequisite

MLD snooping must be enabled on the bridge domain for port-specific profiles to affect MLD snooping behavior.



**Note** Static mrouter port configuration is a port-level option and should be added to profiles intended for ports. It is not recommended to add mrouter port configuration to a profile intended for bridge domains.

## Configuration

```
/* Enter the global configuration mode */
RP0/0/RP0/CPU0:router# configuration

/* Enter the MLD snooping profile configuration mode and create a new profile or accesses
an existing profile.*/
RP0/0/RP0/CPU0:router(config)# mld snooping profile mrouter-port-profile
RP0/0/RP0/CPU0:router(config-mld-snooping-profile)# mrouter
/* Configures a static mrouter on a port. */

RP0/0/RP0/CPU0:router(config-mld-snooping-profile)# commit
```

## Running Configuration

```
RP0/0/RP0/CPU0:router# show running-config
configuration
  mld snooping profile mrouter-port-profile
    mrouter
!
```

## Verification

The below show command output confirms that the mrouter configuration is enabled:

```
RP0/0/RP0/CPU0:router# show mld snooping profile mrouter-port-profile
```

```
MLD Snoop Profile mrouter-port-profile:
```

|                           |                |
|---------------------------|----------------|
| <b>Static Mrouter:</b>    | <b>Enabled</b> |
| Bridge Domain References: | 0              |
| Port References:          | 0              |

# Configuring Router Guard (MLD)

To prevent multicast routing protocol messages from being received on a port and, therefore, prevent a port from being a dynamic mrouter port, follow these steps. Note that both router guard and static mrouter commands may be configured on the same port.

### Prerequisite

MLD snooping must be enabled on the bridge domain for port-specific profiles to affect MLD snooping behavior.



**Note** Router guard configuration is a port-level option and should be added to profiles intended for ports. It is not recommended to add router guard configuration to a profile intended for bridge domains. To do so would prevent all mrouter, including MLD queriers, from being discovered in the bridge domain.

### Configuration

```
/* Enter the global configuration mode and create the Bridge Group GRP1 and the Bridge
Domain ISP1*/
RP0/0/RP0/CPU0:router# configuration

/* Enter the MLD snooping profile configuration mode and create a new profile or accesses
an existing profile. */
RP0/0/RP0/CPU0:router(config)# mld snooping profile host-port-profile

/* Configure router guard. This protects the port from dynamic discovery.*/
RP0/0/RP0/CPU0:router(config-mld-snooping-profile)# router-guard
RP0/0/RP0/CPU0:router(config-l2vpn-bg-bd)# commit
```

### Running Configuration

```
RP0/0/RP0/CPU0:router# show running-config
configuration
  mld snooping profile host-port-profile
    router-guard
  !
```

### Verification

Verify that the router guard config in the named profile is enabled:

```
RP0/0/RP0/CPU0:router# show mld snooping profile host-port-profile detail
MLD Snoop Profile host-port-profile:
```

|                           |                |
|---------------------------|----------------|
| <b>Router Guard:</b>      | <b>Enabled</b> |
| Bridge Domain References: | 0              |
| Port References:          | 0              |

## Configuring Immediate-leave for MLD

To add the MLD snooping immediate-leave option to an MLD snooping profile:

### Configuration

```
/* Enter the global configuration mode. */
RP0/0/RP0/CPU0:router# configuration

/* Enter MLD snooping profile configuration mode and create a new profile or accesses an
existing profile. */
```

```
RP0/0/RP0/CPU0:router(config)# mld snooping profile host-port-profile
/* Enable the immediate-leave option */
RP0/0/RP0/CPU0:router(config-mld-snooping-profile)# immediate-leave
RP0/0/RP0/CPU0:router(config-l2vpn-bg-bd)# commit
```

If you add the **immediate-leave** option:

- to a profile attached to a bridge domain, it applies to all ports under the bridge.
- to a profile attached to a port, it applies to the port.

### Running Configuration

```
RP0/0/RP0/CPU0:router# show running-config
configuration
  mld snooping profile host-port-profile
  immediate-leave
!
```

### Verification

Verify that the immediate leave config in the named profile is enabled:

```
RP0/0/RP0/CPU0:router# show mld snooping profile host-port-profile detail
```

MLD Snoop Profile host-port-profile:

|                           |                |
|---------------------------|----------------|
| <b>Immediate Leave:</b>   | <b>Enabled</b> |
| Router Guard:             | Enabled        |
| Bridge Domain References: | 0              |
| Port References:          | 0              |

## Configuring Internal Querier for MLD

### Prerequisite

MLD snooping must be enabled on the bridge domain for this procedure to take effect.

### Configuration

```
/* Enter the global configuration mode. */
RP0/0/RP0/CPU0:router# configuration

/* Enter MLD snooping profile configuration mode and create a new profile or accesses an
existing profile. */
RP0/0/RP0/CPU0:router(config)# mld snooping profile internal-querier-profile

/* Configure an IP address for internal querier use. The default system-ip-address value
(0.0.0.0) is not valid for the internal querier.
You must explicitly configure an IP address. Enter a valid link-local IPv6 address. */
RP0/0/RP0/CPU0:router(config-mld-snooping-profile)# system-ip-address fe80::98 link-local

/* Enable an internal querier with default values for all options.*/
RP0/0/RP0/CPU0:router(config-mld-snooping-profile)# internal-querier
RP0/0/RP0/CPU0:router(config-mld-snooping-profile)# commit
```

### Running Configuration

```
RP0/0/RP0/CPU0:router# show running-config
configuration
 mld snooping profile internal-querier-profile
 system-ip-address fe80::98 link-local
 internal-querier
!
```




---

**Note** Internal Querier is not recommended, when BVI and MLD snooping is configured under a bridge.

---

### Verification

Verify that the internal querier config is enabled:

```
RP0/0/RP0/CPU0:router# show mld snooping profile internal-querier-profile detail

MLD Snoop Profile internal-querier-profile:

System IP Address:                fe80::98

Internal Querier Support:         Enabled

Bridge Domain References:         0
Port References:                  0
```

## Configuring Static Groups for MLD

To add one or more static groups or MLDv2 source groups to an MLD snooping profile, follow these steps:

### Prerequisite

MLD snooping must be enabled on the bridge domain for port-specific profiles to affect MLD snooping behavior.

### Configuration

```
/* Enter the global configuration mode. */
RP0/0/RP0/CPU0:router# configuration

/* Enter MLD snooping profile configuration mode and create a new profile or accesses an
existing profile. */
RP0/0/RP0/CPU0:router(config)# mld snooping profile host-port-profile

/* Configure a static group. */
/* Note: Repeat this step to add additional static groups. */
RP0/0/RP0/CPU0:router(config-mld-snooping-profile)# static group fe80::99 source fe80::99
RP0/0/RP0/CPU0:router(config-mld-snooping-profile)# commit
```

If you add the **static group** option:

- to a profile attached to a bridge domain, it applies to all ports under the bridge.
- to a profile attached to a port, it applies to the port.

## Running Configuration

```
RP0/0/RP0/CPU0:router# show running-config
configuration
 mld snooping profile host-port-profile
 static group fe80::99 source fe80::99
!
```

## Verification

```
RP0/0/RP0/CPU0:router# show mld snooping bridge-domain f1:100 detail
```

| Bridge Domain | Profile | Act | Ver | #Ports | #Mrtrs | #Grps     |
|---------------|---------|-----|-----|--------|--------|-----------|
| #SGs          |         |     |     |        |        |           |
| -----         | -----   | --- | --- | -----  | -----  | -----     |
| ----          |         |     |     |        |        |           |
| f1:100        | grp1    | Y   | v2  | 3      | 1      | 1000 1002 |

```
Profile Configured Attributes:
 System IP Address:          fe80::99
 Minimum Version:            1
 Report Suppression:         Enabled
 Unsolicited Report Interval: 1000 (milliseconds)
 TCN Query Solicit:          Disabled
 TCN Membership Sync:        Disabled
 TCN Flood:                  Enabled
 TCN Flood Query Count:      2
 Router Alert Check:          Disabled
 TTL Check:                  Enabled
 nV Mcast Offload:           Disabled
 Internal Querier Support:    Disabled
 Querier Query Interval:      125 (seconds)
 Querier LMQ Interval:        1000 (milliseconds)
 Querier LMQ Count:           2
 Querier Robustness:          2
 Startup Query Interval:      31 seconds
 Startup Query Count:         2
 Startup Query Max Response Time: 10.0 seconds
 Mrouter Forwarding:          Enabled
 P2MP Capability:             Disabled
 Default IGMP Snooping profile: Disabled
 IP Address:                  fe80::f278:16ff:fe63:4d81
 Port:                        BVI1000
 Version:                    v2
 Query Interval:              125 seconds
 Robustness:                  2
 Max Resp Time:               10.0 seconds
 Time since last G-Query:     97 seconds
 Mrouter Ports:              1
 Dynamic:                     BVI1000
 STP Forwarding Ports:        0
 ICCP Group Ports:            0
 Groups:                      1000
 Member Ports:                0
 V2 Source Groups:            1002
 Static/Include/Exclude:      0/1002/0
 Member Ports (Include/Exclude): 1002/0
```

# Configuring MLD Snooping

## Configure

```
RP0/0/RP0/CPU0:router# configure
/* Create two profiles. */
RP0/0/RP0/CPU0:router(config)# mld snooping profile bridge_profile
RP0/0/RP0/CPU0:router(config-mld-snooping-profile)# mld snooping profile port_profile
RP0/0/RP0/CPU0:router(config-mld-snooping-profile)# mrouter
RP0/0/RP0/CPU0:router(config-mld-snooping-profile)# exit
RP0/0/RP0/CPU0:router(config)#

/* Configure two physical interfaces for L2 support.*/
RP0/0/RP0/CPU0:router(config)# interface GigabitEthernet0/8/0/38
RP0/0/RP0/CPU0:router(config-if)# negotiation auto
RP0/0/RP0/CPU0:router(config-if)# l2transport
RP0/0/RP0/CPU0:router(config-if)# no shut
RP0/0/RP0/CPU0:router(config-if)# exit
RP0/0/RP0/CPU0:router(config-mld-snooping-profile)# interface GigabitEthernet0/8/0/39
RP0/0/RP0/CPU0:router(config-if)# negotiation auto
RP0/0/RP0/CPU0:router(config-if)# l2transport
RP0/0/RP0/CPU0:router(config-if)# no shut
RP0/0/RP0/CPU0:router(config-if)# exit

/* Add interfaces to the bridge domain. Attach bridge_profile to the bridge domain and
port_profile to one of the Ethernet interfaces.
The second Ethernet interface inherits MLD snooping configuration attributes from the bridge
domain profile.*/
RP0/0/RP0/CPU0:router(config)# l2vpn
RP0/0/RP0/CPU0:router(config-l2vpn)# bridge group bg1
RP0/0/RP0/CPU0:router(config-l2vpn-bg)# bridge-domain bd1
RP0/0/RP0/CPU0:router(config-l2vpn-bg-bd)# mld snooping profile bridge_profile
RP0/0/RP0/CPU0:router(config-l2vpn-bg-bd-mld-snooping)# interface GigabitEthernet0/8/0/38
RP0/0/RP0/CPU0:router(config-l2vpn-bg-bd-mld-snooping-if)# mld snooping profile port_profile
RP0/0/RP0/CPU0:router(config-l2vpn-bg-bd-mld-snooping-if)# interface GigabitEthernet0/8/0/39
RP0/0/RP0/CPU0:router(config-l2vpn-bg-bd-mld-snooping-if)# exit
RP0/0/RP0/CPU0:router(config-l2vpn-bg-bd-mld-snooping)# exit
RP0/0/RP0/CPU0:router(config-l2vpn-bg-bd)# commit
```

## Running Configuration

```
RP0/0/RP0/CPU0:router# show running-config
configuration
  mld snooping profile bridge_profile
  !
  mld snooping profile port_profile
  mrouter
  !

interface GigabitEthernet0/8/0/38
  negotiation auto
  l2transport
  no shut
  !
!
interface GigabitEthernet0/8/0/39
  negotiation auto
  l2transport
  no shut
```

```

!
!
l2vpn
  bridge group bg1
    bridge-domain bd1
    mld snooping profile bridge_profile
  interface GigabitEthernet0/8/0/38
    mld snooping profile port_profile
  interface GigabitEthernet0/8/0/39
    !
  !
!
!

```

### Verification

Verify the configured bridge ports.

```
RP0/0/RP0/CPU0:router# show mld snooping port
```

```

Bridge Domain f10:109

Port
----
BVI1009
GigabitEthernet0/8/0/38
GigabitEthernet0/8/0/39

```

|      | State |     |      | #Grps | #SGs |
|------|-------|-----|------|-------|------|
| Oper | STP   | Red |      |       |      |
| ---- | ---   | --- | ---- | ----  | ---- |
| Up   | -     | -   | 0    | 0     |      |
| Up   | -     | -   | 1000 | 1000  |      |
| Up   | -     | -   | 1000 | 1000  |      |

## Configuring MLD Snooping on Ethernet Bundles

This example assumes that the front-ends of the bundles are preconfigured. For example, a bundle configuration might consist of three switch interfaces, as follows:

### Configure

```

/* Configure the front-ends of the bundles consisting of three switch interfaces.*/
RP0/0/RP0/CPU0:router# configure
RP0/0/RP0/CPU0:router(config)# interface bundle-ether 1
RP0/0/RP0/CPU0:router(config-if)# exit
RP0/0/RP0/CPU0:router(config)# interface GigabitEthernet0/0/0/0
RP0/0/RP0/CPU0:router(config-if)# exit
RP0/0/RP0/CPU0:router(config)# interface GigabitEthernet0/0/0/1
RP0/0/RP0/CPU0:router(config-if)# exit
RP0/0/RP0/CPU0:router(config)# interface GigabitEthernet0/0/0/2
RP0/0/RP0/CPU0:router(config-if)# channel-group 1 mode on
RP0/0/RP0/CPU0:router(config-if)# exit
RP0/0/RP0/CPU0:router(config)# interface GigabitEthernet0/0/0/3
RP0/0/RP0/CPU0:router(config-if)# channel-group 1 mode on
RP0/0/RP0/CPU0:router(config-if)# exit

/* Configure two MLD snooping profiles. */
RP0/0/RP0/CPU0:router(config)# mld snooping profile bridge_profile
RP0/0/RP0/CPU0:router(config-mld-snooping-profile)# exit
RP0/0/RP0/CPU0:router(config)# mld snooping profile port_profile
RP0/0/RP0/CPU0:router(config-mld-snooping-profile)# mrouter
RP0/0/RP0/CPU0:router(config-mld-snooping-profile)# exit

```

```

/* Configure interfaces as bundle member links. */

RP0/0/RP0/CPU0:router(config)# interface GigabitEthernet0/0/0/0
RP0/0/RP0/CPU0:router(config-if)# bundle id 1 mode on
RP0/0/RP0/CPU0:router(config-if)# negotiation auto
RP0/0/RP0/CPU0:router(config-if)# exit
RP0/0/RP0/CPU0:router(config)# interface GigabitEthernet0/0/0/1
RP0/0/RP0/CPU0:router(config-if)# bundle id 1 mode on
RP0/0/RP0/CPU0:router(config-if)# negotiation auto
RP0/0/RP0/CPU0:router(config-if)# exit
RP0/0/RP0/CPU0:router(config)# interface GigabitEthernet0/0/0/2
RP0/0/RP0/CPU0:router(config-if)# bundle id 2 mode on
RP0/0/RP0/CPU0:router(config-if)# negotiation auto
RP0/0/RP0/CPU0:router(config-if)# exit
RP0/0/RP0/CPU0:router(config)# interface GigabitEthernet0/0/0/3
RP0/0/RP0/CPU0:router(config-if)# bundle id 2 mode on
RP0/0/RP0/CPU0:router(config-if)# negotiation auto
RP0/0/RP0/CPU0:router(config-if)# exit

/* Configure the bundle interfaces for L2 transport. */
RP0/0/RP0/CPU0:router(config)# interface Bundle-Ether 1
RP0/0/RP0/CPU0:router(config-if)# l2transport
RP0/0/RP0/CPU0:router(config-if)# exit
RP0/0/RP0/CPU0:router(config)# interface Bundle-Ether 2
RP0/0/RP0/CPU0:router(config-if)# l2transport
RP0/0/RP0/CPU0:router(config-if)# exit

/* Add the interfaces to the bridge domain and attach MLD snooping profiles. */
RP0/0/RP0/CPU0:router(config)# l2vpn
RP0/0/RP0/CPU0:router(config-l2vpn)# bridge group bg1
RP0/0/RP0/CPU0:router(config-l2vpn-bg)# mld snooping profile bridge_profile
RP0/0/RP0/CPU0:router(config-l2vpn-bg-mld-snooping-profile)# interface bundle-Ether 1
RP0/0/RP0/CPU0:router(config-l2vpn-bg-mld-snooping-profile-if)# mld snooping profile
port_profile
RP0/0/RP0/CPU0:router(config-l2vpn-bg-mld-snooping-profile-if)# interface bundle-Ether 2
RP0/0/RP0/CPU0:router(config-l2vpn-bg-mld-snooping-profile-if)# commit

```

## Running Configuration

```

RP0/0/RP0/CPU0:router# show running-config
configuration
  interface Port-channel1
  !
  interface GigabitEthernet0/0/0/0
  !
  interface GigabitEthernet0/0/0/1
  !
    interface GigabitEthernet0/0/0/2
      channel-group 1 mode on
    !
    interface GigabitEthernet0/0/0/3
      channel-group 1 mode on
    !
  mld snooping profile bridge_profile
  !
  mld snooping profile port_profile
  mrouter
  !
  interface GigabitEthernet0/0/0/0
    bundle id 1 mode on
    negotiation auto
  !

```



```

interface GigabitEthernet0/0/0/1
  bundle id 1 mode on
  negotiation auto
!
interface GigabitEthernet0/0/0/2
  bundle id 2 mode on
  negotiation auto
!
interface GigabitEthernet0/0/0/3
  bundle id 2 mode on
  negotiation auto
!
interface Bundle-Ether 1
  l2transport
!
!
interface Bundle-Ether 2
  l2transport
!
!

l2vpn
  bridge group bg1
    bridge-domain bd1
    mld snooping profile bridge_profile
    interface bundle-Ether 1
      mld snooping profile port_profile
    interface bundle-Ether 2
      !
    !
  !
!

```

## Verification

```

RP0/0/RP0/CPU0:router# show mld snooping port
Bridge Domain BG1:BD1
State
Port Oper STP Red #Grps #SGs
----
HundredGigE0/0/0/3 Up - - 1 1
HundredGigE0/0/0/7 Up - - 1 1
HundredGigE0/19/0/11 Up - - 1 1
HundredGigE0/19/0/5 Up - - 1 1
RP0/0/RP1/CPU0:Router#

```

