



Perform System Upgrade and Install Feature Packages

The system upgrade and package installation processes are executed using **install** commands on the router. The processes involve adding and activating the iso images (.iso) and feature packages on the router. These files are accessed from a network server and then activated on the router. If the installed package or SMU causes any issue on the router, it can be uninstalled.

The topics covered in this chapter are:

- [Upgrading the System, on page 1](#)
- [View Supported Software Upgrade or Downgrade Versions, on page 3](#)
- [Upgrading Features, on page 6](#)
- [Install Prepared Packages, on page 8](#)
- [Install Packages, on page 11](#)
- [Uninstall Packages, on page 15](#)
- [View Features and Capabilities Supported on a Platform, on page 18](#)

Upgrading the System

Upgrading the system is the process of installing a new version of the Cisco IOS XR operating system on the router. The router comes preinstalled with the Cisco IOS XR image. However, you can install the new version in order to keep router features up to date. The system upgrade operation is performed from the XR VM. However, during system upgrade, the software that runs on both the XR VM and the System Admin VM get upgraded.



Note The 1G interface flaps twice instead of once in the Modular Port Adapter (MPA) NC55-MPA-12T-S after you reload any of these NCS 55A2 Fixed Chassis - NCS-55A2-MOD-SL, NCS-55A2-MOD-HD-S, NCS-55A2-MOD-HX-S, or NCS-55A2-MOD-SE-S.



Note If you insert a line card on a router that is running a lower version than the one the line card supports, the line card fails to boot. You must first upgrade the router to a software version that supports the line card, insert the line card and iPX boot the line card.



Note If an interface on a router doesn't have a configuration and is brought up by performing no-shut operation, then upon router reload, the interface state changes to **admin-shutdown** automatically.



Note

- Ensure that you have adequate disk space.
- Run the **fsck** command to check the status of the file system, for a successful IOS XR upgrade. You must run the **fsck** command in the System Admin EXEC mode to install a System Admin package, and in the XR EXEC mode to install the XR package.
- All install commands are applicable in both the System Admin EXEC mode and in XR EXEC mode. System Admin install operations are done from XR EXEC mode.

Perform a system upgrade by installing a base package—Cisco IOS XR Unicast Routing Core Bundle. To install this bundle, run the **install** command. The filename for the Cisco IOS XR Unicast Routing Core Bundle bundle is *ncs5500-mini-x.iso*.



Caution Do not perform any install operations when the router is reloading.
Do not reload the router during an upgrade operation.



Note To enable hardware programming after upgrading the chassis from an older software version to IOS XR Release 7.6.x or later through ISSU, initiate a chassis reload. The chassis reload is mandatory, if you must enable a maximum transmission unit (MTU) value of 9646 on applicable interfaces.

Cisco IOS XR supports RPM signing and signature verification for Cisco IOS XR RPM packages in the ISO and upgrade images. All RPM packages in the Cisco IOS XR ISO and upgrade images are signed to ensure cryptographic integrity and authenticity. This guarantees that the RPM packages haven't been tampered with and the RPM packages are from Cisco IOS XR. The private key, which is used for signing the RPM packages, is created and securely maintained by Cisco.

View Supported Software Upgrade or Downgrade Versions

Table 1: Feature History Table

Feature Name	Release Information	Description
Supported Software Upgrade or Downgrade IOS XR Versions	Release 7.5.1	<p>You can determine whether a software version can be upgraded or downgraded to another version using this functionality. Before an actual upgrade or downgrade process, you can also view the hardware or software limitations that could cause the upgrade or downgrade to fail. This feature helps you plan successful software upgrades or downgrades.</p> <p>This feature introduces the show install upgrade-matrix command.</p>

Your Cisco router comes preinstalled with IOS XR software. You either upgrade the software release to use new features and software fixes, or you downgrade the software. To leverage new features that are added or software fixes that are provided, it is important that you upgrade your router to a current version.

To help you select a Cisco IOS XR software release that aligns with Cisco-certified upgrade and downgrade paths, this feature provides answers to the following questions:

- What upgrade or downgrade releases are supported for the current release?
- I plan to upgrade from Release X to Release Y. Does my router support upgrade to Release Y?
- Are there any bridging SMUs that must be installed before I upgrade the software?

This feature provides a mechanism to determine whether the current release supports an upgrade to a target release. This task is run at the start of a software upgrade or downgrade through the **install replace** command. If the validation fails, the software upgrade is blocked, and the system notifies the reason for the failure. This feature allows you to proactively examine whether you can upgrade or downgrade to a certain release, saving time and effort involved in planning and upgrading the software.

The feature provides the following information to help you understand the prerequisites or limitations related to the specific software upgrade or downgrade:

- Required bridging SMU RPMs
- Blocking SMU RPMs
- Unsupported hardware
- Caveats or restrictions

You can overwrite the automatic validation using the **force** keyword in the **install replace** command. With this option, the system displays warning messages when the upgrade fails but does not block the software

upgrade. Use the **force ?** keyword to understand any other impact to system functionalities apart from the disabling of this process that determines the supported releases for software upgrade or downgrade.

You can view the support information using the following **show** commands or through the operational data.

Command	Description
show install upgrade-matrix running	Displays all supported software upgrades from the current version according to the support data installed on the running system
show install upgrade-matrix iso <i>path-to-ISO</i>	Displays details about the software upgrade from the current version to the version of the target ISO according to the support data in both the running system and the ISO image
show install upgrade-matrix iso <i>path-to-ISO</i> all	Displays all supported software upgrades from any version according to the support data in the target ISO image
show install upgrade-matrix iso <i>path-to-ISO</i> from-running	Displays details about the software upgrade from the current version to the version of ISO according to the support matrices in both the running system and the target ISO image

View All Supported Software Upgrade from Running Version

The following example shows all supported releases for upgrade from the current version 7.5.1 on the router:

```
Router#show install upgrade-matrix running
Fri Jul 29 10:12:47.740 IST
This may take a while ...
```

The current software [7.5.1] can be upgraded from and downgraded to the following releases:

```
=====
From      To        Bridge SMUs Required   Caveats
=====
7.0.2     7.5.1    None                   None
-----
7.5.1     7.0.2    None                   None
-----
7.5.1     7.4.1    None                   None
-----
7.5.1     7.1.3    None                   None
-----
7.5.1     7.1.2    None                   None
-----
7.5.1     7.2.1    None                   None
-----
7.5.1     7.2.2    None                   None
-----
7.5.1     7.3.1    None                   None
-----
7.5.1     7.3.2    None                   None
-----
7.4.1     7.5.1    None                   None
```

```
-----
7.1.3      7.5.1      None          None
-----
7.1.2      7.5.1      None          None
-----
7.2.1      7.5.1      None          None
-----
7.2.2      7.5.1      None          None
-----
7.3.1      7.5.1      None          None
-----
7.3.2      7.5.1      None          None
-----
```

View Supported Releases to Upgrade Software From Current Version to Target Version

This example shows the supported release to upgrade software from the current version to a target version.

```
Router#show install upgrade-matrix iso /harddisk:/ncs5500-goldenk9-x-7.5.2-rev1.iso
Fri Jul 29 10:16:43.233 IST
This may take a while ...
Upgrade from the current software [7.5.1] to 7.5.2 is supported
```

```
=====
From      To          Bridge SMUs Required    Caveats
=====
7.5.1     7.5.2      None                    None
-----
```

The current image has the upgrade matrix that specifies only its supported upgrade or downgrade versions up to a certain version. If you want to determine the upgrade path of a newer version of ISO that is higher than the version in the current matrix, the upgrade matrix from the new ISO provides the supported upgrade or downgrade paths.

View Supported Releases from Current Version to an ISO Version

The following example shows the software upgrade paths, downgrade paths, and restrictions to an upgrade from the current version to the target ISO version:

```
Router#show install upgrade-matrix iso /harddisk:/ncs5500-goldenk9-x-7.5.2-rev1.iso all
Fri Jul 29 10:17:02.826 IST
This may take a while ...
```

7.5.2 can be upgraded from and downgraded to the following releases:

```
=====
From      To          Bridge SMUs Required    Caveats
=====
7.5.1     7.5.2      None                    None
-----
7.4.2     7.5.2      None                    None
-----
7.4.1     7.5.2      None                    None
-----
7.5.2     7.4.2      None                    None
-----
7.5.2     7.6.1      None                    None
-----
```

7.5.2	7.4.1	None	None
7.5.2	7.2.1	None	None
7.5.2	7.2.2	None	None
7.5.2	7.3.1	None	None
7.5.2	7.3.2	None	None
7.2.1	7.5.2	None	None
7.2.2	7.5.2	None	None
7.6.1	7.5.2	None	None
7.3.1	7.5.2	None	None
7.3.2	7.5.2	None	None

View Supported Releases from Running Version to an ISO Version

The following example displays details about the software upgrade from the current version to the version of ISO according to the support matrices in both the running system and the target ISO image:

```
Router#show install upgrade-matrix iso /harddisk:/ncs5500-goldenk9-x-7.5.2-rev1.iso
from-running
Fri Jul 29 10:17:35.583 IST
This may take a while ...
Upgrade from the current software [7.5.1] to 7.5.2 is supported

=====
From      To      Bridge SMUs Required    Caveats
=====
7.5.1     7.5.2   None                    None
=====
```

Upgrading Features

Upgrading features is the process of deploying new features and software patches on the router. Perform a feature upgrade by installing packages. Perform a software patch installation by installing Software Maintenance Upgrade (SMU) files.

Installing a package on the router installs specific features that are part of that package. Cisco IOS XR Software is divided into various software packages; this enables you to select the features to run on your router. Each package contains components that perform a specific set of router functions, such as routing, security, and so on.

For example, the components of the routing package are split into individual RPMs such as BGP and OSPF. BGP is a part of the base software version and is a mandatory RPM, and hence can't be removed. However, you can add and remove optional RPMs such as OSPF as required.

The naming convention of the package is <platform>-<pkg>-<pkg version>-<release version>.<architecture>.rpm.

Feature	Package
Forwarding	ncs5500-fwding-1.0.0.0-<release-number>.x86_64.rpm
BGP	ncs5500-bgp-1.0.0.0-<release-number>.x86_64.rpm
mpls-te-rsvp	ncs5500-mpls-te-rsvp-1.0.0.0-<release-number>.x86_64.rpm
k9sec	ncs5500-k9sec-1.0.0.0-<release-number>.x86_64.rpm
mgb1	ncs5500-mgb1-2.0.0.0-<release-number>.x86_64.rpm
mpls	ncs5500-mpls-1.0.0.0-<release-number>.x86_64.rpm
infra	ncs5500-infra-1.0.0.0-<release-number>.x86_64.rpm
os	ncs5500-os-1.0.0.0-<release-number>.x86_64.rpm
routing	ncs5500-routing-1.0.0.0-<release-number>.x86_64.rpm
security	ncs5500-security-1.0.0.0-<release-number>.x86_64.rpm
os-support	ncs5500-os-support-1.0.0.0-<release-number>.x86_64.rpm

Use the **install** commands to install packages and SMUs. For more information about the install process, see [Install Packages, on page 11](#).



Note

- Ensure that you have adequate disk space.
- Run the **fsck** command to check the status of the file system, for a successful IOS XR upgrade. You must run the **fsck** command in the System Admin EXEC mode to install a System Admin package, and in the XR EXEC mode to install the XR package.
- All install commands are applicable in both the System Admin EXEC mode and in XR EXEC mode. System Admin install operations are done from XR EXEC mode.

There are separate packages and SMUs for the XR VM and the System Admin VM. They can be identified by their filenames.

The XR and System Admin packages and SMUs can be activated from XR and System Admin VMs.

You can alternatively perform a cross VM operation, by activating or deactivating the System Admin packages and SMUs from XR.

Third-Party SMUs

Consider these points while activating and deactivating third-party SMUs:

- To activate a third-party SMU, you should have a corresponding base package.
- When you activate a third-party SMU, the corresponding third-party base package state is inactive, this is an expected behavior.

- To deactivate a third-party SMU, ensure that you activate the corresponding third-party base package. Third-party SMUs deactivated explicitly might lead to triages to the install team.



Note All SMUs are bundled together with the base package in a TAR file



Note All Cisco RPMs have the platform name in the filename. For example, **ncs5500-sysadmin**.

Install Prepared Packages

A system upgrade or feature upgrade is performed by activating the ISO image file, packages, and SMUs. It is possible to prepare these installable files before activation. During the prepare phase, preactivation checks are made and the components of the installable files are loaded on to the router setup. The prepare process runs in the background and the router is fully usable during this time. When the prepare phase is over, all the prepared files can be activated instantaneously. The advantages of preparing before activation are:

- If the installable file is corrupted, the prepare process fails. This provides an early warning of the problem. If the corrupted file was activated directly, it might cause router malfunction.
- Directly activating an ISO image for system upgrade takes considerable time during which the router is not usable. However, if the image is prepared before activation, not only does the prepare process run asynchronously, but when the prepared image is subsequently activated, the activation process too takes less time. As a result, the router downtime is considerably reduced.
- It performs a disk-space check that is required for a successful operation. This quantifies the disk-space deficit, and provides you possible alternatives to free up space in the filesystem.
- It performs a package compatibility check. This ensures that all the required installation packages are available. For any package compatibility check error, details of the package and version are logged.

Complete this task to upgrade the system and install packages by making use of the prepare operation.



Note Depending on whether you are installing a System Admin package or a XR package, execute the **install** commands in the System Admin EXEC mode or XR EXEC mode respectively. All **install** commands are applicable in both these modes. System Admin install operations can be done from XR mode.

Step 1 Add the required ISO image and packages to the repository.

For details, see [Install Packages, on page 11](#).

Step 2 **show install repository**

Example:

```
RP/0/RP0/CPU0:router#show install repository
```


Perform this step to verify that the required installable files are available in the repository. Packages are displayed only after the "install add" operation is complete.

Step 3 **show install request**

Example:

```
RP/0/RP0/CPU0:router#show install request
```

(Optional) Displays the operation ID of the add operation and its status. The operation ID can be later used to execute the **activate** command.

```
Install operation 8 is still in progress
```

Step 4 Execute one of these:

- **install prepare** *package_name*
- **install prepare id** *operation_id*

Example:

```
RP/0/RP0/CPU0:router#install prepare ncs5500-mpls-1.0.0.0-r60023I.x86_64.rpm
```

or

```
RP/0/RP0/CPU0:router#install prepare id 8
```

The prepare process takes place. This operation is performed in asynchronous mode. The **install prepare** command runs in the background, and the EXEC prompt is returned as soon as possible.

If you use the operation ID, all packages that were added in the specified operation are prepared together. For example, if 5 packages are added in operation 8, by executing **install prepare id 8**, all 5 packages are prepared together. You do not have to prepare the packages individually.

Step 5 **show install prepare**

Example:

```
RP/0/RP0/CPU0:router#show install prepare
```

Displays packages that are prepared. From the result, verify that all the required packages have been prepared.

Step 6 **install activate**

Example:

```
RP/0/RP0/CPU0:router#install activate
```

All the packages that have been prepared are activated together to make the package configurations active on the router.

Note You should not specify any package name or operation ID in the CLI.

Activations of some SMUs require manual reload of the router. When such SMUs are activated, a warning message is displayed to perform reload. The components of the SMU get activated only after the reload is complete. Perform router reload immediately after the execution of the **install activate** command is completed.

Step 7 **show install active**

Example:

```
RP/0/RP0/CPU0:router#show install active
```

Displays packages that are active.

```
Node 0/RP0/CPU0 [RP]
```

```

Boot Partition: xr_lv70
Active Packages: 24
ncs5500-xr-6.0.0 version=6.0.0 [Boot image]
ncs5500-k9sec-1.0.0.0-r600
ncs5500-mgbl-2.0.0.0-r600
ncs5500-mppls-1.0.0.0-r600
ncs5500-mppls-te-rsvp-1.0.0.0-r600
ncs5500-infra-2.0.0.2-r600.CSCxr22222
ncs5500-iosxr-fwding-2.0.0.2-r600.CSCxr22222
ncs5500-iosxr-fwding-2.0.0.5-r600.CSCxr90016
ncs5500-iosxr-fwding-2.0.0.1-r600.CSCxr55555
ncs5500-iosxr-fwding-2.0.0.6-r600.CSCxr90017
ncs5500-dpa-1.0.0.1-r600.CSCxr90002
ncs5500-dpa-1.0.0.2-r600.CSCxr90004
ncs5500-dpa-fwding-1.0.0.1-r600.CSCxr90005
ncs5500-k9sec-1.0.0.1-r600.CSCxr80008
ncs5500-os-support-1.0.0.1-r600.CSCxr90013
ncs5500-os-support-1.0.0.2-r600.CSCxr90014
ncs5500-fwding-1.0.0.2-r600.CSCxr90011
ncs5500-fwding-1.0.0.5-r600.CSCxr90019
ncs5500-fwding-1.0.0.1-r600.CSCxr90010
ncs5500-fwding-1.0.0.4-r600.CSCxr90018
ncs5500-mgbl-2.0.0.2-r600.CSCxr80009
ncs5500-mppls-1.0.0.1-r600.CSCxr33333
ncs5500-mppls-te-rsvp-1.0.0.2-r600.CSCxr33335

```

From the result, verify that on all RPs and LCs, the same image and package versions are active.

Step 8 install commit

Example:

```
RP/0/RP0/CPU0:router#install commit
```

Installing Packages: Related Commands

Related Commands	Purpose
show install log	Displays the log information for the install process; this can be used for troubleshooting in case of install failure.
show install package	Displays the details of the packages that have been added to the repository. Use this command to identify individual components of a package.
install prepare clean	Clears the prepare operation and removes all the packages from the prepared state.

What to do next

- After performing a system upgrade, upgrade FPD by using the **upgrade hw-module location all fpd all** command from the System Admin EXEC mode. The progress of FPD upgrade process can be monitored using the **show hw-module fpd** command in the System Admin EXEC mode. Reload the router after the FPD upgrade is completed.
- Verify the installation using the **install verify packages** command.
- Uninstall the packages or SMUs if their installation causes any issues on the router. See [Uninstall Packages](#).



Note ISO images cannot be uninstalled. However, you can perform a system downgrade by installing an older ISO version.

Install Packages

Complete this task to upgrade the system or install a patch. The system upgrade is done using an ISO image file, while the patch installation is done using packages and SMUs. You can also include SMUs in an upgrade operation along with mini ISO.

This task is also used to install *.rpm* files. The *.rpm* file contains multiple packages and SMUs that are merged into a single file. The packaging format defines one RPM per component, without dependency on the card type.



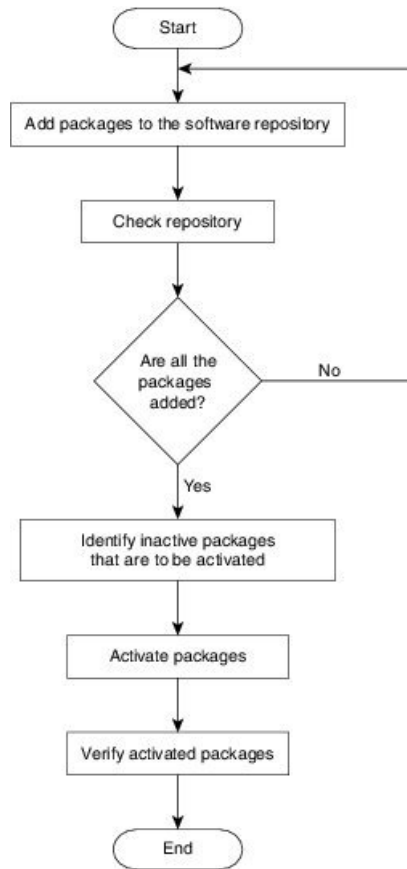
-
- Note**
- Ensure that you have adequate disk space.
 - Run the **fsck** command to check the status of the file system, for a successful IOS XR upgrade. You must run the **fsck** command in the System Admin EXEC mode to install a System Admin package, and in the XR EXEC mode to install the XR package.
 - All install commands are applicable in both the System Admin EXEC mode and in XR EXEC mode. System Admin install operations are done from XR EXEC mode.
-



-
- Note**
- The system upgrade is supported only from XR EXEC mode.
 - While the System Admin package can be executed using **install** commands in the System Admin EXEC mode and XR EXEC mode, the XR package can only be executed using the install commands in XR EXEC mode. All **install** commands are applicable in both these modes.
 - While the System Admin SMUs can be installed in System Admin EXEC mode and XR EXEC mode, the XR SMUs can only be installed through the XR EXEC mode.
 - Install operation over IPv6 is not supported.
-

The workflow for installing a package is shown in this flowchart.

Figure 1: Installing Packages Workflow



Before you begin

- Configure and connect to the management port. The installable file is accessed through the management port.
- Copy the package to be installed either on the router's hard disk or on a network server to which the router has access.

Step 1

Execute one of these:

- **install add source** <http or shhttp transfer protocol>/package_path/ filename1 filename2 ...
- **install add source** <tftp transfer protocol>/package_path/ filename1 filename2 ...
- **install add source** <ftp or sftp transfer protocol>://user@server:/package_path/ filename1 filename2 ...

Example:

```
RP/0/RP0/CPU0:router#install add source /harddisk:/ ncs5500-mpls-1.0.0.0-r731.x86_64.rpm
ncs5500-mgbl-1.0.0.0-r732.x86_64.rpm
```

or

```
RP/0/RP0/CPU0:router#install add source sftp://root@8.33.5.15:/auto/ncs/package/
ncs55000-mcast-1.0.0.0-731.x86_64.rpm ncs5500-iosxr-mpls-1.0.0.0-732.x86_64.rpm
```

or

```
RP/0/RP0/CPU0:router#install add source /harddisk:/ ncs5500-mpls-1.0.0.0-<release-number>.x86_64.rpm
ncs5500-mgbl-1.0.0.0-<release-number>.x86_64.rpm
```

or

```
RP/0/RP0/CPU0:router#install add source sftp://root@8.33.5.15:/auto/ncs/package/
ncs55000-mcast-1.0.0.0-<release-number>.x86_64.rpm
ncs5500-iosxr-mpls-1.0.0.0-<release-number>.x86_64.rpm
```

Note A space must be provided between the *package_path* and *filename*.

The software files are unpacked from the package, validated, and then added to the software repository. This operation might take time depending on the size of the files being added. The operation is performed in asynchronous mode. The **install add** command runs in the background, and the EXEC prompt is returned when all files are unpacked.

Note The repositories for the XR VM and the System Admin VM are different. The system automatically adds a routing package to the XR VM repository and a system administration package to the System Admin VM repository.

Step 2 show install request

Example:

```
RP/0/RP0/CPU0:router#show install request
```

(Optional) Displays the operation ID of the add operation and its status. The operation ID can be later used to execute the **activate** command.

```
Install operation 8 is still in progress
```

Step 3 show install repository

Example:

```
RP/0/RP0/CPU0:router#show install repository
```

Displays packages that are added to the repository. Packages are displayed only after the **install add** operation is complete.

Step 4 show install inactive

Example:

```
RP/0/RP0/CPU0:router#show install inactive
```

Displays inactive packages that are present in the repository. Only inactive packages can be activated.

Step 5 Execute one of these:

- **install activate** *package_name*
- **install activate id** *operation_id*

Example:

```
RP/0/RP0/CPU0:router#install activate ncs5500-mpls-1.0.0.0-<release-number>.x86_64.rpm
ncs5500-mgbl-2.0.0.0-<release-number>.x86_64.rpm
```

or

```
RP/0/RP0/CPU0:router#install activate id 8
```

The *operation_id* is that of the **install add** operation, see [Install Packages, on page 11](#) [Step Step 2, on page 13](#). This command can also be run from the Sys Admin mode. The package configurations are made active on the router. As a

result, new features and software fixes take effect. This operation is performed in asynchronous mode, as this is the default. The **install activate** command runs in the background, and the EXEC prompt is returned.

You can run the activate operation either through the synchronous mode or by selecting the `sync` option from the CLI.

If you use the operation ID, all packages that were added in the specified operation are activated together. For example, if 5 packages are added in operation ID 8, by executing **install activate id 8**, all 5 packages are activated together. You do not have to activate the packages individually.

Activation does not happen instantaneously, but takes some time. When activation completes, the system reloads automatically. For restart SMU activation, the SMU takes effect once the processes impacted by the SMU are restarted.

If the SMU has dependency on both XR VM and System Admin VM, perform the reload after activating the SMU in both VMs so that they take effect simultaneously. To reload the router, use the **hw-module location all reload** command from the System Admin EXEC mode.

Step 6 show install active

Example:

```
RP/0/RP0/CPU0:router#show install active
```

Displays packages that are active.

```
Node 0/RP0/CPU0 [RP]
Boot Partition: xr_lv70
Active Packages: 24
ncs5500-xr-<release-number> version=<release-number> [Boot image]
ncs5500-k9sec-1.0.0.0-<release-number>
ncs5500-mgbl-2.0.0.0-<release-number>
ncs5500-mpls-1.0.0.0-<release-number>
ncs5500-mpls-te-rsvp-1.0.0.0-<release-number>
ncs5500-infra-2.0.0.2-<release-number>.CSCxr22222
ncs5500-iosxr-fwding-2.0.0.2-<release-number>.CSCxr22222
ncs5500-iosxr-fwding-2.0.0.5-<release-number>.CSCxr90016
ncs5500-iosxr-fwding-2.0.0.1-<release-number>.CSCxr55555
ncs5500-iosxr-fwding-2.0.0.6-<release-number>.CSCxr90017
ncs5500-dpa-1.0.0.1-<release-number>.CSCxr90002
ncs5500-dpa-1.0.0.2-<release-number>.CSCxr90004
ncs5500-dpa-fwding-1.0.0.1-<release-number>.CSCxr90005
ncs5500-k9sec-1.0.0.1-<release-number>.CSCxr80008
ncs5500-os-support-1.0.0.1-<release-number>.CSCxr90013
ncs5500-os-support-1.0.0.2-<release-number>.CSCxr90014
ncs5500-fwding-1.0.0.2-<release-number>.CSCxr90011
ncs5500-fwding-1.0.0.5-<release-number>.CSCxr90019
ncs5500-fwding-1.0.0.1-<release-number>.CSCxr90010
ncs5500-fwding-1.0.0.4-<release-number>.CSCxr90018
ncs5500-mgbl-2.0.0.2-<release-number>.CSCxr80009
ncs5500-mpls-1.0.0.1-<release-number>.CSCxr33333
ncs5500-mpls-te-rsvp-1.0.0.2-<release-number>.CSCxr33335
```

From the result, verify that the same image and package versions are active on all RPs and LCs.

Table 2: Example: Installing Packages: Related Commands

Related Commands	Purpose
show install log	Displays the log information for the install process; this can be used for troubleshooting in case of install failure.
show install package	Displays the details of the packages that have been added to the repository. Use this command to identify individual components of a package.

Related Commands	Purpose
install prepare	Makes pre-activation checks on an inactive package, to prepare it for activation.
show install prepare	Displays the list of package that have been prepared and are ready for activation.

Step 7 **install commit**

Example:

```
RP/0/RP0/CPU0:router#install commit
```

Commits the Host, XR, and System Admin newly active software.

Note On Multi-SDR mode, you can use the **install commit sdr** to commit just the sdr from where the CLI is being triggered. For more information, see [Secure Domain Router Commands](#).

What to do next

- After performing a system upgrade, upgrade FPD by using the **upgrade hw-module location all fpd all** command from the System Admin EXEC mode. The progress of FPD upgrade process can be monitored using the **show hw-module fpd** command in the System Admin EXEC mode. Reload the router after the FPD upgrade is completed.
- Verify the installation using the **install verify packages** command.
- Uninstall the packages or SMUs if their installation causes any issues on the router. See [Uninstall Packages, on page 15](#).



Note If you are upgrading power supply modules for NC55-PWR-3KW-DC and NC55-PWR-3KW-2HV, ensure that you first upgrade SC IO FPGA by using **upgrade hw-module location <SC0/SC1> fpd all** command from Sysadmin prompt followed by the **upgrade hw-module location pm-all fpd** command, to upgrade FPD.

Finally use **hw-module location <SC0/SC1> reload** command from Sysadmin prompt to reload the shelf controller.

Uninstall Packages

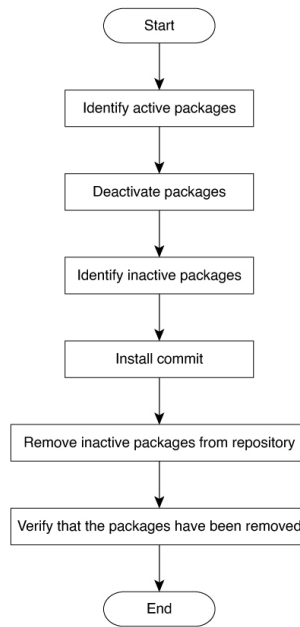
Complete this task to uninstall a package. All router functionalities that are part of the uninstalled package are deactivated. Packages that are added in the XR VM cannot be uninstalled from the System Admin VM. However, the cross VM operation allows System Admin packages to be deactivated from XR as well.



Note Installed ISO images cannot be uninstalled. Also, kernel SMUs that install third party SMU on host, XR VM and System Admin VM, cannot be uninstalled. However, subsequent installation of ISO image or kernel SMU overwrites the existing installation.

The workflow for uninstalling a package is shown in this flowchart.

Figure 2: Uninstalling Packages Workflow



This task uninstalls XR VM packages. If you need to uninstall System Admin packages, run the same commands from the System Admin EXEC mode.

Step 1 show install active

Example:

```
RP/0/RP0/CPU0:router#show install active
```

Displays active packages. Only active packages can be deactivated.

```

Node 0/RP0/CPU0 [RP]
Boot Partition: xr_lv70
Active Packages: 24
ncs5500-xr-6.0.0 version=6.0.0 [Boot image]
ncs5500-k9sec-1.0.0.0-r600
ncs5500-mgbl-2.0.0.0-r600
ncs5500-mpis-1.0.0.0-r600
ncs5500-mpis-te-rsvp-1.0.0.0-r600
ncs5500-infra-2.0.0.2-r600.CSCxr22222
ncs5500-iosxr-fwding-2.0.0.2-r600.CSCxr22222
ncs5500-iosxr-fwding-2.0.0.5-r600.CSCxr90016
ncs5500-iosxr-fwding-2.0.0.1-r600.CSCxr55555
ncs5500-iosxr-fwding-2.0.0.6-r600.CSCxr90017
ncs5500-dpa-1.0.0.1-r600.CSCxr90002
ncs5500-dpa-1.0.0.2-r600.CSCxr90004
ncs5500-dpa-fwding-1.0.0.1-r600.CSCxr90005
ncs5500-k9sec-1.0.0.1-r600.CSCxr80008
ncs5500-os-support-1.0.0.1-r600.CSCxr90013
ncs5500-os-support-1.0.0.2-r600.CSCxr90014
ncs5500-fwding-1.0.0.2-r600.CSCxr90011
ncs5500-fwding-1.0.0.5-r600.CSCxr90019
ncs5500-fwding-1.0.0.1-r600.CSCxr90010
  
```



```
ncs5500-fwding-1.0.0.4-r600.CSCxr90018
ncs5500-mgbl-2.0.0.2-r600.CSCxr80009
ncs5500-mpls-1.0.0.1-r600.CSCxr33333
ncs5500-mpls-te-rsvp-1.0.0.2-r600.CSCxr33335
```

Step 2 Execute one of these:

- **install deactivate** *package_name*
- **install deactivate id** *operation_id*

Example:

```
RP/0/RP0/CPU0:router#install deactivate ncs5500-mpls-1.0.0.0-r60023I.x86_64.rpm
ncs5500-mgbl-2.0.0.0-r60023I.x86_64.rpm
```

or

```
RP/0/RP0/CPU0:router#install deactivate id 8
```

The *operation_id* is the ID from **install add** operation. All features and software patches associated with the package are deactivated. You can specify multiple package names and deactivate them simultaneously.

If you use the operation ID, all packages that were added in the specified operation are deactivated together. You do not have to deactivate the packages individually. If System admin packages were added as a part of the **install add** operation (of the ID used in deactivate) then those packages will also be deactivated.

Step 3 **show install inactive**

Example:

```
RP/0/RP0/CPU0:router#show install inactive
```

The deactivated packages are now listed as inactive packages. Only inactive packages can be removed from the repository.

Step 4 **install commit**

Step 5 **install remove** *package_name*

Example:

```
RP/0/RP0/CPU0:router#install remove ncs5500-mpls-1.0.0.0-r60023I.x86_64.rpm
ncs5500-mgbl-2.0.0.0-r60023I.x86_64.rpm
```

The inactive packages are removed from the repository.

Use the **install remove** command with the **id** *operation-id* keyword and argument to remove all packages that were added for the specified operation ID.

You can also use the **install remove inactive all** to remove all inactive packages from XR and System Admin.

Step 6 **show install repository**

Example:

```
RP/0/RP0/CPU0:router#show install repository
```

Displays packages available in the repository. The package that are removed are no longer displayed in the result.

What to do next

Install required packages. .

View Features and Capabilities Supported on a Platform

Table 3: Feature History Table

Feature Name	Release Information	Description
View Features and Capabilities Supported on a Platform	Release 7.5.2	This functionality displays a list of supported and unsupported features and their capabilities in a release for your router. With this feature, you are better equipped to plan your network configuration with features annotated for their support information. This feature introduces the show features command.

This feature provides an answer to the question `Is feature X supported on my router?`

You can determine whether a feature and their capabilities are supported on your router for the release. The support information is based on the release and platform-specific data such as platform variants, RP, or LC present on the router.



Note In Cisco IOS XR Software Release 7.5.2, only the capabilities for Access Control List (ACL) feature is supported.

The functionality to determine the capabilities information is enabled by default when the supported release is installed on the router.

Use the **show features** command to view the list of supported features and their capabilities. The feature capabilities are displayed in a tree structure with notations for the support information. For example, in ACL, the capability to use compression to accommodate a large number of Access Control Elements (ACEs) is supported, whereas IPv6 ACL BNG does not have support data in Cisco IOS XR Software Release 7.5.2. This support information about the feature is represented with the following key in the tree structure:

Key	Capability Support Information	Description
X	Unsupported	The feature capability is not supported on the platform for the release
-	Supported	The feature capability is supported on the platform for the release
?	Support unknown	The support for the feature capability is unknown on the platform for the release. This data could be because the optional package for the feature is not installed on the router.
*	Support data not available	The support for the feature capability is not available on the platform for the release. This data could be because the feature may be specific to a line card that is not present on the router.

View the List of Supported Features

In this example, the supported features on the router are displayed.



Note In Cisco IOS XR Software Release 7.5.2, only the feature capabilities for Access Control List (ACL) are supported.

```
Router#show features
Fri Jun 3 19:16:58.298 UTC
Key:
X - Unsupported
- - Supported
? - Support unknown (optional package not installed)
* - Support data not available

[-] Cisco IOS XR
|--[-] XR Protocols
| |--[-] XR Base Protocols
| | |--[-] Services
| | | |--[-] Access Control List (ACL)
| | | | |--[-] IPv6 ACL Support
| | | | | |--[*] IPv6 ACL ABF Track
| | | | | |--[*] IPv6 ACL BNG
| | | | | |--[*] IPv6 ACL Chaining (Meta ACL)
| | | | | |--[-] IPv6 ACL Common ACL
| | | | | |--[-] IPv6 ACL Compression
| | | | | |--[*] IPv6 ACL Default ABF
| | | | | |--[*] IPv6 ACL Fragment
| | | | | |--[-] IPv6 ACL ICMP Off
| | | | | |--[-] IPv6 ACL ICMP Protocol
| | | | | |--[-] IPv6 ACL Interface Statistics
| | | | | |--[-] IPv6 ACL Log Rate
| | | | | |--[-] IPv6 ACL Log Threshold
| | | | | |--[-] IPv6 ACL Logging
| | | | | |--[-] IPv6 ACL MIB
| | | | | |--[-] IPv6 ACL Object Groups (Scale)
| | | | | |--[-] IPv6 ACL Police
| | | | | |--[-] IPv6 ACL Priority
| | | | | |--[*] IPv6 ACL Protocol Range
| | | | | |--[-] IPv6 ACL Set Qos-Group
| | | | | |--[-] IPv6 ACL Set TTL
| | | | | |--[-] IPv6 ACL TCP Flags
| | | | | |--[-] IPv6 ACL TTL Match
| | | | | |--[-] IPv6 ACL UDF
| | | | |--[-] ES-ACL Support (L2 ACL)
| | | |--[-] IPv4 ACL Support
| | | | |--[-] IPv4 ACL Set Qos-group
| | | | |--[*] IPv4 ACL ABF Track
| | | | |--[*] IPv4 ACL BNG
| | | | |--[*] IPv4 ACL Chaining (Meta ACL)
| | | | |--[-] IPv4 ACL Common ACL
| | | | |--[-] IPv4 ACL Compression
| | | | |--[*] IPv4 ACL Default ABF
| | | | |--[*] IPv4 ACL Fragment
| | | | |--[-] IPv4 ACL Fragment Flags
| | | | |--[-] IPv4 ACL ICMP Off
| | | | |--[-] IPv4 ACL ICMP Protocol
| | | | |--[-] IPv4 ACL Interface Statistics
| | | | |--[-] IPv4 ACL Log Rate
```

```

| | | | | |--[-] IPv4 ACL Log Threshold
| | | | | |--[-] IPv4 ACL Logging
| | | | | |--[-] IPv4 ACL MIB
| | | | | |--[-] IPv4 ACL Object Groups (Scale)
| | | | | |--[-] IPv4 ACL Police
| | | | | |--[-] IPv4 ACL Priority
| | | | | |--[*] IPv4 ACL Protocol Range
| | | | | |--[-] IPv4 ACL Set TTL
| | | | | |--[-] IPv4 ACL TCP Flags
| | | | | |--[-] IPv4 ACL TTL
| | | | | |--[-] IPv4 ACL UDF
| | | | |--[-] IPv4 Prefix-List
| | | | |--[-] IPv6 Prefix-List

```

View the List of Supported ACL Features

In this example, the capabilities for ACL features on the router are displayed.

```

Router#show features acl
Fri Jun 3 19:17:31.635 UTC
Key:
X - Unsupported
- - Supported
? - Support unknown (optional package not installed)
* - Support data not available

[-] Access Control List (ACL)
|--[-] IPv6 ACL Support
| |--[*] IPv6 ACL ABF Track
| |--[*] IPv6 ACL BNG
| |--[*] IPv6 ACL Chaining (Meta ACL)
| |--[-] IPv6 ACL Common ACL
| |--[-] IPv6 ACL Compression
| |--[*] IPv6 ACL Default ABF
| |--[*] IPv6 ACL Fragment
| |--[-] IPv6 ACL ICMP Off
| |--[-] IPv6 ACL ICMP Protocol
| |--[-] IPv6 ACL Interface Statistics
| |--[-] IPv6 ACL Log Rate
| |--[-] IPv6 ACL Log Threshold
| |--[-] IPv6 ACL Logging
| |--[-] IPv6 ACL MIB
| |--[-] IPv6 ACL Object Groups (Scale)
| |--[-] IPv6 ACL Police
| |--[-] IPv6 ACL Priority
| |--[*] IPv6 ACL Protocol Range
| |--[-] IPv6 ACL Set Qos-Group
| |--[-] IPv6 ACL Set TTL
| |--[-] IPv6 ACL TCP Flags
| |--[-] IPv6 ACL TTL Match
| |--[-] IPv6 ACL UDF
|--[-] ES-ACL Support (L2 ACL)
|--[-] IPv4 ACL Support
| |--[-] IPv4 ACL Set Qos-group
| |--[*] IPv4 ACL ABF Track
| |--[*] IPv4 ACL BNG
| |--[*] IPv4 ACL Chaining (Meta ACL)
| |--[-] IPv4 ACL Common ACL
| |--[-] IPv4 ACL Compression
| |--[*] IPv4 ACL Default ABF
| |--[*] IPv4 ACL Fragment
| |--[-] IPv4 ACL Fragment Flags

```

```

| |--[-] IPv4 ACL ICMP Off
| |--[-] IPv4 ACL ICMP Protocol
| |--[-] IPv4 ACL Interface Statistics
| |--[-] IPv4 ACL Log Rate
| |--[-] IPv4 ACL Log Threshold
| |--[-] IPv4 ACL Logging
| |--[-] IPv4 ACL MIB
| |--[-] IPv4 ACL Object Groups (Scale)
| |--[-] IPv4 ACL Police
| |--[-] IPv4 ACL Priority
| |--[*] IPv4 ACL Protocol Range
| |--[-] IPv4 ACL Set TTL
| |--[-] IPv4 ACL TCP Flags
| |--[-] IPv4 ACL TTL
| |--[-] IPv4 ACL UDF
|--[-] IPv4 Prefix-List
|--[-] IPv6 Prefix-List

```

View the List of Supported ACL Features for Specific RP

In this example, the capabilities for ACL features on the RP location 0/RP0/CPU0 are displayed.

```

Router#show features acl detail location 0/RP0/CPU0
Fri June 3 19:15:49.889 UTC
Key:
X - Unsupported
- - Supported
? - Support unknown (optional package not installed)
* - Support data not available

[-] Access Control List (ACL)
  Cisco provides basic traffic filtering capabilities with access control
  lists (also referred to as access lists). User can configure access
  control lists (ACLs) for all routed network protocols to filter protocol
  packets when these packets pass through a device. User can configure
  access lists on your device to control access to a network, access lists
  can prevent certain traffic from entering or exiting a network.
|--[-] IPv6 ACL Support
|   IPv6 based ACL is a list of source IPv6 addresses that use Layer 3 or
|   Layer 4 information to permit or deny access to traffic. IPv6 router
|   ACLs apply only to IPv6 packets that are routed.. A filter contains the
|   rules to match the packet matches, the rule also stipulates if the
|   packet should be permitted or denied.
| |--[*] IPv6 ACL ABF Track
| |   IPv6 ACL ABF Track allows the user to configure a rule with track as
| |   nexthop inside the ACL rule . ACL Based Forwarding (ABF) denotes the
| |   ability to forward packets to another next hop router based on the
| |   criteria defined in the rule. Track takes precedence over VRF and
| |   IP, if present in the nexthop
| |--[*] IPv6 ACL BNG
| |   IPv6 ACL BNG is an ACL subscriber BNG feature. It allows the use of
| |   ACL on dynamic template.
| |--[*] IPv6 ACL Chaining (Meta ACL)
| |   IPv6 ACL Chaining (Meta ACL) allows the user to apply more than one
| |   ACL on the interface. is known as Meta ACL or ACL chaining.
| |--[-] IPv6 ACL Common ACL
| |   IPv6 ACL Common allows the user to apply the ACL on the interface
| |   using the common keyword. Using this feature the ACL won't be
| |   applied to the specific interface but it will be common to th entire
| |   NPU to which the interface belongs.
| |--[-] IPv6 ACL Compression
| |   IPv6 ACL Compression allows the user to apply the ACL on the

```

```
| | interface using a compression level. This helps in reducing the
| | hardware resources needed to program the ACL.
| |--[*] IPv6 ACL Default ABF
| | IPv6 ACL Default ABF allows the user to configure a rule with
| | default nexthop inside the ACL rule . ACL Based Forwarding (ABF)
| | denotes the ability to forward packets to another next hop router
| | based on the criteria defined in the rule
| |--[*] IPv6 ACL Fragment
| | IPv6 ACL Fragment allows the user to configure a rule with fragment
| | inside the ACL rule and use it as a match criteria to filter traffic.
| |--[-] IPv6 ACL ICMP Off
| | IPv6 ACL ICMP Off allows the user to not generate the ICMP error
| | message on a deny action. When configured it will not send the
| | packet to FIB to generate ICMP error message.
----- Truncated for Brevity -----
```