



Perform System Upgrade and Install Feature Packages

The system upgrade and package installation processes are executed using **install** commands on the router. The processes involve adding and activating the iso images (.iso) and feature packages on the router. These files are accessed from a network server and then activated on the router. If the installed package or SMU causes any issue on the router, it can be uninstalled.

The topics covered in this chapter are:

- [Upgrading the System, on page 1](#)
- [Upgrading Features, on page 2](#)
- [Install Packages, on page 3](#)
- [Install Prepared Packages, on page 7](#)
- [Uninstall Packages, on page 10](#)

Upgrading the System

Upgrading the system is the process of installing a new version of the Cisco IOS XR operating system on the router. The router comes preinstalled with the Cisco IOS XR image. However, you can install the new version in order to keep router features up to date. The system upgrade operation is performed from the XR VM. However, during system upgrade, the software that runs on both the XR VM and the System Admin VM get upgraded.



Note If an interface on a router doesn't have a configuration and is brought up by performing no-shut operation, then upon router reload, the interface state changes to **admin-shutdown** automatically.



Note Ensure that you have adequate disk space. Run the **fsck** command to check the status of the file system, for a successful IOS XR upgrade. You must run the **fsck** command in the System Admin EXEC mode to install a System Admin package, and in the XR EXEC mode to install the XR package. All install commands are applicable in both the System Admin EXEC mode and in XR EXEC mode. System Admin install operations are done from XR EXEC mode.

Perform a system upgrade by installing a base package—Cisco IOS XR Unicast Routing Core Bundle. To install this bundle, run the **install** command. The filename for the Cisco IOS XR Unicast Routing Core Bundle bundle is *ncs5k-mini-x.iso*.



Caution Do not perform any install operations when the router is reloading.
Do not reload the router during an upgrade operation.



Note Ensure that you perform a chassis reload to enable hardware programming if a chassis upgrade through ISSU to IOS XR Release 7.6.x and later from an earlier software version. The chassis reload is mandatory, if you must enable a maximum MTU value of 9646 on applicable interfaces.

Upgrading Features

Upgrading features is the process of deploying new features and software patches on the router. Perform a feature upgrade by installing package files, also called packages. Perform a software patch installation by installing Software Maintenance Upgrade (SMU) files.

Installing a package on the router installs specific features that are part of that package. Cisco IOS XR Software is divided into various software packages; this enables you to select the features to run on your router. Each package contains components that perform a specific set of router functions, such as routing, security, and so on.

For example, the components of the routing package are split into individual RPMs such as BGP and OSPF. BGP is a part of the base software version and is a mandatory RPM, and hence can't be removed. However, you can add and remove optional RPMs such as OSPF as required.

The naming convention of the package is `<platform>-<pkg>-<pkg version>-<release version>.<architecture>.rpm`.

Package	Requirement	Example
BGP	Mandatory	ncs5k-bgp-1.0.0.0-<release-number>.x86_64.rpm
NCS5K RM	Mandatory	ncs5k-rm-1.0.0.0-<release-number>.x86_64.rpm
NCS 5K Forwarding	Mandatory	ncs5k-fwding-1.0.0.0-<release-number>.x86_64.rpm
ios-xr CE	Mandatory	ncs5k-iosxr-ce-1.0.0.0-<release-number>.x86_64.rpm
iosxr-fwding	Mandatory	ncs5k-iosxr-fwding-1.0.0.0-<release-number>.x86_64.rpm
iosxr-infra	Mandatory	ncs5k-iosxr-infra-1.0.0.0-<release-number>.x86_64.rpm
iosxr-infra-test	Optional	ncs5k-infra-test-1.0.0.0-<release-number>.x86_64.rpm
iosxr-mgbl	Optional	ncs5k-iosxr-mgbl-1.0.0.0-<release-number>.x86_64.rpm
iosxr-mpls	Optional	ncs5k-iosxr-mpls-1.0.0.0-<release-number>.x86_64.rpm

Package	Requirement	Example
iosxr-os	Mandatory	ncs5k-iosxr-os-1.0.0.0-<release-number>.x86_64.rpm
iosxr-routing	Mandatory	ncs5k-iosxr-routing-1.0.0.0-<release-number>.x86_64.rpm
iosxr-security	Optional	ncs5k-k9sec-1.0.0.0-<release-number>.x86_64.rpm
os-support	Mandatory	ncs5k-os-support-1.0.0.0-<release-number>.x86_64.rpm
base	Mandatory	ncs5k-base-1.0.0.0-<release-number>.x86_64.rpm
mcast	Optional	ncs5k-mcast-1.0.0.0-<release-number>.x86_64.rpm

Use the **install** commands to install package and SMU. For more information about the install process, see [Install Packages, on page 3](#).



Note Ensure that you have adequate disk space. Run the **fsck** command to check the status of the file system, for a successful IOS XR upgrade. You must run the **fsck** command in the System Admin EXEC mode to install a System Admin package, and in the XR EXEC mode to install the XR package. All install commands are applicable in both the System Admin EXEC mode and in XR EXEC mode. System Admin install operations are done from XR EXEC mode.

There are separate packages and SMUs for the XR VM and the System Admin VM. They can be identified by their filenames.

The XR packages or SMUs are activated from the XR VM, whereas the System Admin packages or SMUs are activated from the System Admin VM.

You can alternatively perform a cross VM operation, by activating or deactivating the System Admin packages and SMUs from XR.

Install Packages

Complete this task to upgrade the system or install a patch. The system upgrade is done using an ISO image file, while the patch installation is done using packages and SMUs. You can also include SMUs in an upgrade operation along with mini ISO.

This task is also used to install *.rpm* files. The *.rpm* file contains multiple packages and SMUs that are merged into a single file. The packaging format defines one RPM per component, without dependency on the card type.



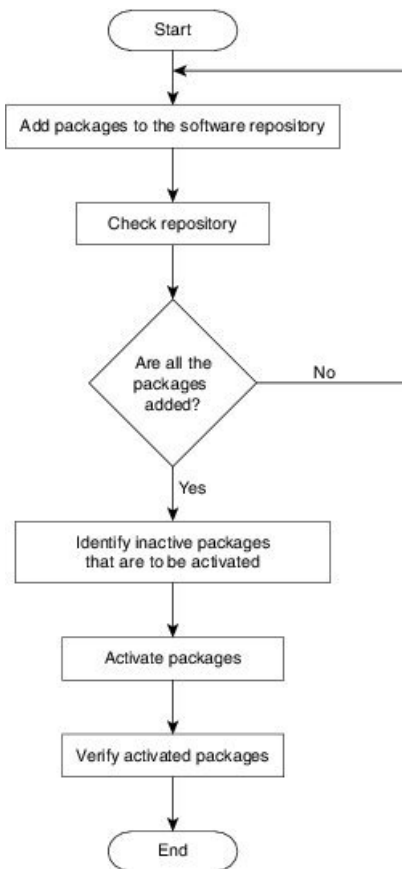
Note Ensure that you have adequate disk space. Run the **fsck** command to check the status of the file system, for a successful IOS XR upgrade. You must run the **fsck** command in the System Admin EXEC mode to install a System Admin package, and in the XR EXEC mode to install the XR package. All install commands are applicable in both the System Admin EXEC mode and in XR EXEC mode. System Admin install operations are done from XR EXEC mode.

**Note**

- The system upgrade is supported only from XR EXEC mode.
- While the System Admin package can be executed using **install** commands in the System Admin EXEC mode and XR EXEC mode, the XR package can only be executed using the install commands in XR EXEC mode. All **install** commands are applicable in both these modes.
- While the System Admin SMUs can be installed in System Admin EXEC mode and XR EXEC mode, the XR SMUs can only be installed through the XR EXEC mode.
- Install operation over IPv6 is not supported.

The workflow for installing a package is shown in this flowchart.

Figure 1: Installing Packages Workflow

**Before you begin**

- Configure and connect to the management port. The installable file is accessed through the management port.
- Copy the package to be installed either on the router's hard disk or on a network server to which the router has access.

Step 1

Execute one of these:

- **install add source** *<http or shttp transfer protocol>/package_path/ filename1 filename2 ...*
- **install add source** *<ftp transfer protocol>/package_path/ filename1 filename2 ...*
- **install add source** *<ftp or sftp transfer protocol>//user@server:/package_path/ filename1 filename2 ...*

Example:

or

```
RP/0/RP0/CPU0:router#install add source sftp://root@8.33.5.15:/auto/ncs/package/ncs5k-mcast-1.0.0.0-<release-number>.x86_64.rpm ncs5k-iosxr-mpls-1.0.0.0-<release-number>.x86_64.rpm
```

or

```
RP/0/RP0/CPU0:router#install add source sftp://root@8.33.5.15:/auto/ncs/package/ncs5k-mcast-1.0.0.0-<release-number>.x86_64.rpm ncs5k-iosxr-mpls-1.0.0.0-<release-number>.x86_64.rpm
```

Note A space must be provided between the *package_path* and *filename*.

The software files are unpacked from the package, validated, and then added to the software repository. This operation might take time depending on the size of the files being added. The operation is performed in asynchronous mode. The **install add** command runs in the background, and the EXEC prompt is returned as soon as possible.

Note The repositories for the XR VM and the System Admin VM are different. The system automatically adds a routing package to the XR VM repository and a system administration package to the System Admin VM repository.

Step 2

show install request

Example:

```
RP/0/RP0/CPU0:router#show install request
```

(Optional) Displays the operation ID of the add operation and its status. The operation ID can be later used to execute the **activate** command.

```
Install operation 8 is still in progress
```

Step 3

show install repository

Example:

```
RP/0/RP0/CPU0:router#show install repository
```

Displays packages that are added to the repository. Packages are displayed only after the **install add** operation is complete.

Step 4

show install inactive

Example:

```
RP/0/RP0/CPU0:router#show install inactive
```

Displays inactive packages that are present in the repository. Only inactive packages can be activated.

Step 5

Execute one of these:

- **install activate** *package_name*
- **install activate id** *operation_id*

Example:

```
RP/0/RP0/CPU0:router#install activate ncs5k-mcast-1.0.0.0-<release-number>.x86_64.rpm
ncs5k-iosxr-mps-1.0.0.0-<release-number>.x86_64.rpm
```

or

```
RP/0/RP0/CPU0:router#install activate id 8
```

The *operation_id* is that of the **install add** operation. This command can also be run from System Admin mode. The package configurations are made active on the router. As a result, new features and software fixes take effect. This operation is performed in asynchronous mode, as this is the default. The **install activate** command runs in the background, and the EXEC prompt is returned.

You can run the activate operation either through the synchronous mode or by selecting the `sync` option from the CLI.

If you use the operation ID, all packages that were added in the specified operation are activated together. For example, if 5 packages are added in operation 8, by executing **install activate id 8**, all 5 packages are activated together. You do not have to activate the packages individually.

Activation does not happen instantaneously, but takes some time. Upon activation completion, the system reloads automatically. For restart SMU activation, the SMU takes effect once the processes impacted by the SMU are restarted.

If the SMU has dependency on both XR VM and System Admin VM, perform the reload after activating the SMU in both VMs so that they take effect simultaneously. To reload the router, use the **hw-module location all reload** command from the System Admin EXEC mode.

Step 6 **show install active****Example:**

```
RP/0/RP0/CPU0:router#show install active
```

Displays packages that are active.

```
RP/0/RP0/CPU0:skywarp-tb#show install active
Tue Dec 22 16:02:46.873 UTC
Node 0/RP0/CPU0 [RP]
  Boot Partition: xr_lv55
  Active Packages: 2
    ncs5k-xr-<release-number> version=<release-number> [Boot image]
    ncs5k-k9sec-1.0.0.0-<release-number>
```

From the result, verify that the same image and package versions are active on all RPs and LCs.

Step 7 **install commit****Example:**

```
RP/0/RP0/CPU0:router#install commit
```

Commits the Host, XR, and System Admin newly active software.

Note On Multi-SDR mode, you can use the **install commit sdr** to commit just the sdr from where the CLI is being triggered.

Installing Packages: Related Commands

Related Commands	Purpose
show install log	Displays the log information for the install process; this can be used for troubleshooting in case of install failure.
show install package	Displays the details of the packages that have been added to the repository. Use this command to identify individual components of a package.
install prepare	Makes pre-activation checks on an inactive package, to prepare it for activation.
show install prepare	Displays the list of package that have been prepared and are ready for activation.

What to do next

- Ensure that you commit the upgrade using **install commit**.
- After performing a system upgrade, upgrade FPD by using the **upgrade hw-module location all fpd all** command from the System Admin EXEC mode. The progress of FPD upgrade process can be monitored using the **show hw-module fpd** command in the System Admin EXEC mode. Reload the router after the FPD upgrade is completed.
- Verify the installation using the **install verify packages** command.
- Uninstall the packages or SMUs if their installation causes any issues on the router. See [Uninstall Packages, on page 10](#).



Note ISO images cannot be uninstalled. However, you can perform a system downgrade by installing an older ISO version.

Install Prepared Packages

A system upgrade or feature upgrade is performed by activating the ISO image file, packages, and SMUs. It is possible to prepare these installable files before activation. During the prepare phase, preactivation checks are made and the components of the installable files are loaded on to the router setup. The prepare process runs in the background and the router is fully usable during this time. When the prepare phase is over, all the prepared files can be activated instantaneously. The advantages of preparing before activation are:

- If the installable file is corrupted, the prepare process fails. This provides an early warning of the problem. If the corrupted file was activated directly, it might cause router malfunction.
- Directly activating an ISO image for system upgrade takes considerable time during which the router is not usable. However, if the image is prepared before activation, not only does the prepare process run asynchronously, but when the prepared image is subsequently activated, the activation process too takes less time. As a result, the router downtime is considerably reduced.

- Performs disk-space check that is required for a successful operation. This quantifies the disk-space deficit, and provides you possible alternatives to free up space in the filesystem.
- Performs package compatibility check. This ensures that all the required installation packages are available. For any package compatibility check error, details of the package and version are logged.

Complete this task to upgrade the system and install packages by making use of the prepare operation.



Note Depending on whether you are installing a System Admin package or a XR package, execute the **install** commands in the System Admin EXEC mode or XR EXEC mode respectively. All **install** commands are applicable in both these modes. System Admin install operations can be done from XR mode.

Step 1 Add the required ISO image and packages to the repository.

For details, see [Install Packages, on page 3](#).

Step 2 **show install repository**

Example:

```
RP/0/RP0/CPU0:router#show install repository
```

Perform this step to verify that the required installable files are available in the repository. Packages are displayed only after the "install add" operation is complete.

Step 3 Execute one of these:

- **install prepare** *package_name*
- **install prepare id** *operation_id*

Example:

```
RP/0/RP0/CPU0:router#install prepare ncs5k-mcast-1.0.0.0-r60014I.x86_64.rpm
```

or

```
RP/0/RP0/CPU0:router#install prepare id 8
```

The prepare process takes place. This operation is performed in asynchronous mode. The **install prepare** command runs in the background, and the EXEC prompt is returned as soon as possible.

If you use the operation ID, all packages that were added in the specified operation are prepared together. For example, if 5 packages are added in operation 8, by executing **install prepare id 8**, all 5 packages are prepared together. You do not have to prepare the packages individually.

Step 4 **show install prepare**

Example:

```
RP/0/RP0/CPU0:router#show install prepare
```

Displays packages that are prepared. From the result, verify that all the required packages have been prepared.

Step 5 **install activate**

Example:

```
RP/0/RP0/CPU0:router#install activate
```

All the packages that have been prepared are activated together to make the package configurations active on the router.

Note You should not specify any package name or operation ID in the CLI.

Activations of some SMUs require manual reload of the router. When such SMUs are activated, a warning message is displayed to perform reload. The components of the SMU get activated only after the reload is complete. Perform router reload immediately after the execution of the **install activate** command is completed.

Step 6 **show install active**

Example:

```
RP/0/RP0/CPU0:router#show install active
```

Displays packages that are active.

```
Node 0/RP0/CPU0 [RP]
  Boot Partition: xr_lv55
  Active Packages: 2
    ncs5k-xr-6.0.0 version=6.0.0 [Boot image]
    ncs5k-k9sec-1.0.0.0-r600
```

From the result, verify that on all RPs and LCs, the same image and package versions are active.

Step 7 **install commit**

Example:

```
RP/0/RP0/CPU0:router#install commit
```

Installing Packages: Related Commands

Related Commands	Purpose
show install log	Displays the log information for the install process; this can be used for troubleshooting in case of install failure.
show install package	Displays the details of the packages that have been added to the repository. Use this command to identify individual components of a package.
install prepare clean	Clears the prepare operation and removes all the packages from the prepared state.

What to do next

- After performing a system upgrade, upgrade FPD by using the **upgrade hw-module location all fpd all** command from the System Admin EXEC mode. The progress of FPD upgrade process can be monitored using the **show hw-module fpd** command in the System Admin EXEC mode. Reload the router after the FPD upgrade is completed.
- Verify the installation using the **install verify packages** command.
- Uninstall the packages or SMUs if their installation causes any issues on the router. See [Uninstall Packages](#).



Note ISO images cannot be uninstalled. However, you can perform a system downgrade by installing an older ISO version.

Uninstall Packages

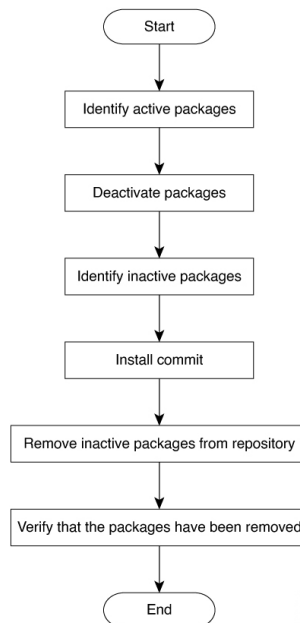
Complete this task to uninstall a package. All router functionalities that are part of the uninstalled package are deactivated. Packages that are added in the XR VM cannot be uninstalled from the System Admin VM. However, the cross VM operation allows System Admin packages to be deactivated from XR as well.



Note Installed ISO images cannot be uninstalled. Also, kernel SMUs that install third party SMU on host, XR VM and System Admin VM, cannot be uninstalled. However, subsequent installation of ISO image or kernel SMU overwrites the existing installation.

The workflow for uninstalling a package is shown in this flowchart.

Figure 2: Uninstalling Packages Workflow



This task uninstalls XR VM packages. If you need to uninstall System Admin packages, run the same commands from the System Admin EXEC mode.

Step 1 `show install active`

Example:

```
RP/0/RP0/CPU0:router#show install active
```

Displays active packages. Only active packages can be deactivated.

```
Node 0/RP0/CPU0 [RP]
  Boot Partition: xr_lv55
  Active Packages: 2
    ncs5k-xr-6.0.0 version=6.0.0 [Boot image]
    ncs5k-k9sec-1.0.0.0-r600
```

Step 2 Execute one of these:

- **install deactivate** *package_name*
- **install deactivate id** *operation_id*

Example:

```
RP/0/RP0/CPU0:router#install deactivate ncs5k-mcast-1.0.0.0-r60014I.x86_64.rpm
ncs5k-iosxr-mps-1.0.0.0-r60014I.x86_64.rpm
```

or

```
RP/0/RP0/CPU0:router#install deactivate id 8
```

The *operation_id* is the ID from **install add** operation. All features and software patches associated with the package are deactivated. You can specify multiple package names and deactivate them simultaneously.

If you use the operation ID, all packages that were added in the specified operation are deactivated together. You do not have to deactivate the packages individually. If System admin packages were added as a part of the **install add** operation (of the ID used in deactivate) then those packages will also be deactivated.

Step 3 **show install inactive**

Example:

```
RP/0/RP0/CPU0:router#show install inactive
```

The deactivated packages are now listed as inactive packages. Only inactive packages can be removed from the repository.

Step 4 **install commit**

Step 5 **install remove** *package_name*

Example:

```
RP/0/RP0/CPU0:router#install remove ncs5k-mcast-1.0.0.0-r60014I.x86_64.rpm
ncs5k-iosxr-mps-1.0.0.0-r60014I.x86_64.rpm
```

The inactive packages are removed from the repository.

Use the **install remove** command with the **id** *operation-id* keyword and argument to remove all packages that were added for the specified operation ID.

You can also use the **install remove inactive all** to remove all inactive packages from XR and System Admin.

Step 6 **show install repository**

Example:

```
RP/0/RP0/CPU0:router#show install repository
```

Displays packages available in the repository. The package that are removed are no longer displayed in the result.

What to do next

Install required packages. .