



Configuring with the Replace Configuration Editor

This chapter provides information on the Replace Configuration Editor window components and procedures for using the Replace Configuration Editor. These sections are provided:

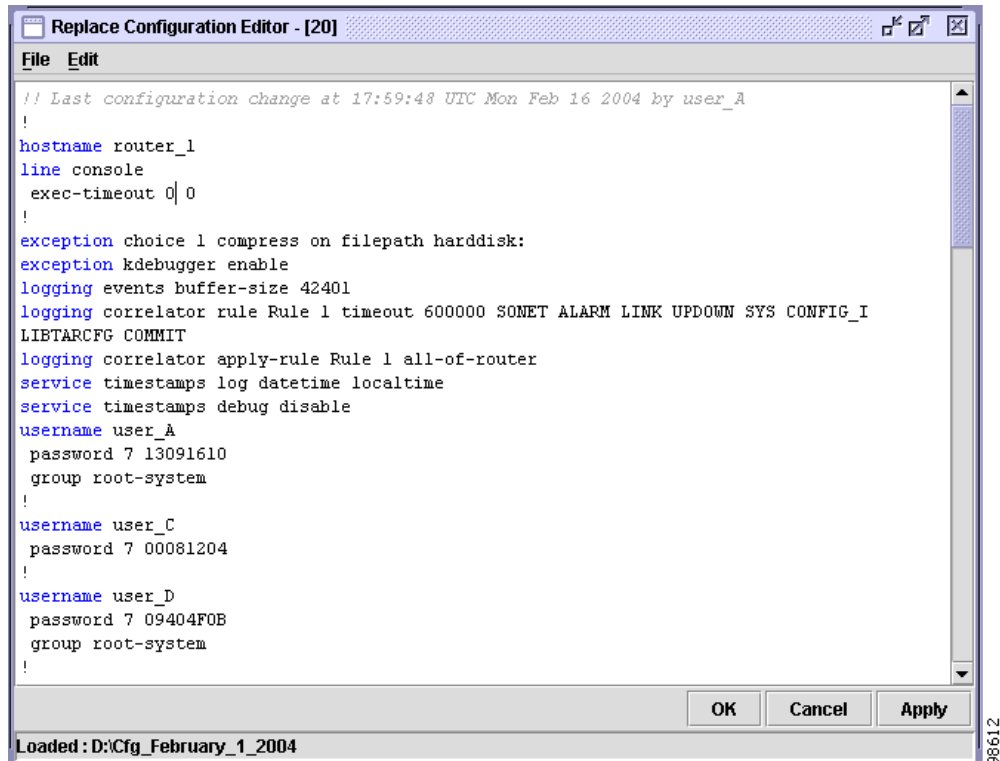
- [Replace Configuration Editor Overview, page 4-135](#)
- [Launching the Replace Configuration Editor, page 4-136](#)
- [Navigating with the Replace Configuration Editor, page 4-137](#)
- [Managing with the Replace Configuration Editor, page 4-138](#)

Replace Configuration Editor Overview

The Replace Configuration Editor application (see [Figure 4-1](#)) is available in the Configuration Desktop, and allows you to load or create a configuration using command-line interface (CLI) commands, functions, and features. The content of the Replace Configuration Editor must either be committed (become the running configuration) or be saved locally.

You can manually change configuration parameters using CLI commands. See the Cisco IOS XR software configuration guides and command references for information on CLI syntax and use in the Replace Configuration Editor.

Figure 4-1 Replace Configuration Editor Example

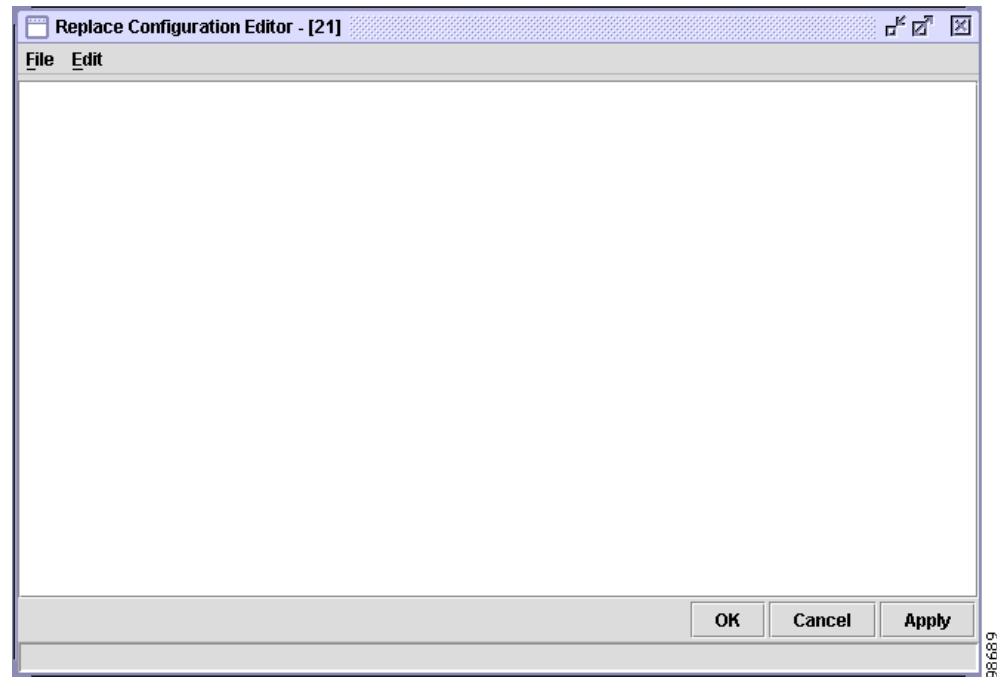


Launching the Replace Configuration Editor

To launch the Replace Configuration Editor, perform the following steps:

-
- Step 1** Ensure that the configuration is locked. See the [“Locking and Unlocking a Router”](#) section on [page 2-119](#) for configuration locking procedures. If the configuration is not locked, an Error dialog box appears when the Replace Configuration Editor tool is clicked.
 - Step 2** Click the **Replace Configuration Editor** icon (see [Figure 2-2](#)) to launch the Replace Configuration Editor (see [Figure 4-2](#)).

Figure 4-2 Replace Configuration Editor Main Window



Navigating with the Replace Configuration Editor

These sections describe how to navigate with the Replace Configuration Editor:

- [Replace Configuration Editor Menu Bar](#), page 4-137
- [Replace Configuration Editor Buttons](#), page 4-138

Replace Configuration Editor Menu Bar

The Replace Configuration Editor menu bar (see [Table 4-1](#)) provides a list of options available in the Replace Configuration Editor.

Table 4-1 Replace Configuration Editor Menu Bar Options

Menu-Bar Option	Task
File	
Load	Loads a chosen configuration file into the Replace Configuration Editor.
Save	Saves the contents of the Replace Configuration Editor to a text file (*.txt). The first time the Save option is chosen, a filename and location must be entered. For each subsequent time, the file is automatically saved to the file and location provided the first time the Save option was used.

Table 4-1 *Replace Configuration Editor Menu Bar Options (continued)*

Menu-Bar Option	Task
Save As	Saves the contents of the Replace Configuration Editor to a text file (*.txt). The Save As option allows you to enter a new filename and location each time the Save As option is chosen.
Edit	
Undo	Allows you to undo the last task in the Replace Configuration Editor.
Redo	Allows you to redo a task that was undone using the Undo tool.

Replace Configuration Editor Buttons

Table 4-2 describes the buttons for the Replace Configuration Editor.

Table 4-2 *Replace Configuration Editor Buttons*

Button	Task
OK	Applies all changes in the Replace Configuration Editor to the target configuration on the router and closes the Replace Configuration Editor.
Cancel	Closes the Replace Configuration Editor without applying changes to the running configuration on the router.
Apply	Applies all changes in the Replace Configuration Editor to the running configuration on the router.

Managing with the Replace Configuration Editor

These sections describe how to manage with the Replace Configuration Editor:

- [Committing a Configuration, page 4-139](#)
- [Printing the Contents of the Replace Configuration Editor, page 4-139](#)
- [Loading a Configuration in the Replace Configuration Editor, page 4-140](#)
- [Checking Syntax in the Replace Configuration Editor, page 4-140](#)
- [Saving a Configuration in the Replace Configuration Editor, page 4-141](#)
- [Cutting, Copying, and Pasting Text in the Replace Configuration Editor, page 4-142](#)

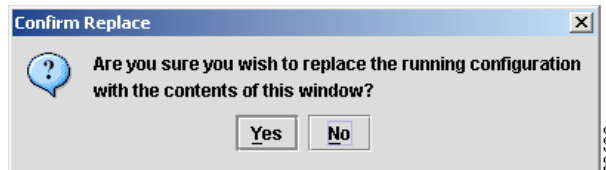
Committing a Configuration

You can replace the target configuration on the router. When you click the OK button or the Apply button, you have the option to replace the target configuration with the configuration in the Replace Configuration Editor.

To commit the configuration, perform the following steps:

-
- Step 1** Choose the Replace Configuration Editor in the Configuration Applications pane.
 - Step 2** Ensure that the configuration in the Replace Configuration Editor is the one you want to commit to the router.
Committing the configuration makes the contents of the Replace Configuration Editor the running configuration.
 - Step 3** Click **OK** or **Apply**. A Confirm Replace dialog box (see [Figure 4-3](#)) appears.

Figure 4-3 Confirm Replace Dialog Box



- Step 4** Click **Yes**. The entire contents of the Replace Configuration Editor is checked for syntax errors. If there are no errors, the target configuration is replaced. If there is a syntax error, an Invalid command error is displayed in red in the Replace Configuration Editor.
 - Step 5** Click the **Commit** icon (see [Figure 2-2](#)). The running configuration is replaced with the target configuration.
-

Printing the Contents of the Replace Configuration Editor

To print the contents of the Replace Configuration Editor, perform the following steps:

-
- Step 1** Choose the Replace Configuration Editor in the Configuration Applications pane.
 - Step 2** To open the Print dialog box from the Configuration Desktop, choose one of the following options:
 - Click the **Print** icon (see [Figure 2-2](#)).
 - Choose **File > Print**.
 - Step 3** Click **OK** to print the content in the Replace Configuration Editor.
-

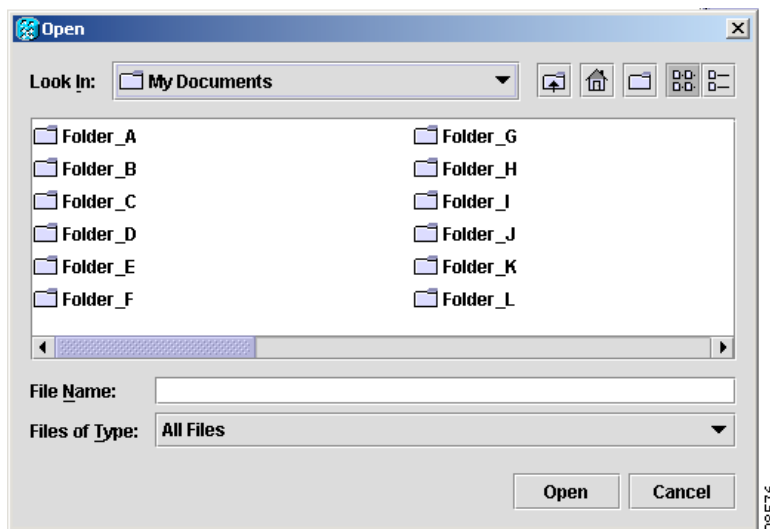
Loading a Configuration in the Replace Configuration Editor

The Load menu option allows you to choose a previously saved configuration file (in ASCII format) to load into the Replace Configuration Editor. When a file is loaded into the Replace Configuration Editor, it is assumed that the loaded file is replacing the target configuration.

To load a configuration in the Replace Configuration Editor, perform the following steps:

-
- Step 1** Choose the Replace Configuration Editor in the Configuration Applications pane.
 - Step 2** Choose **File > Load** to open the Open dialog box (see [Figure 4-4](#)).

Figure 4-4 Open Dialog Box (Replace Configuration Editor)



- Step 3** Enter a filename in the File Name field.
 - Step 4** Click **Open**. The chosen file is loaded into the Replace Configuration Editor.
-

Checking Syntax in the Replace Configuration Editor

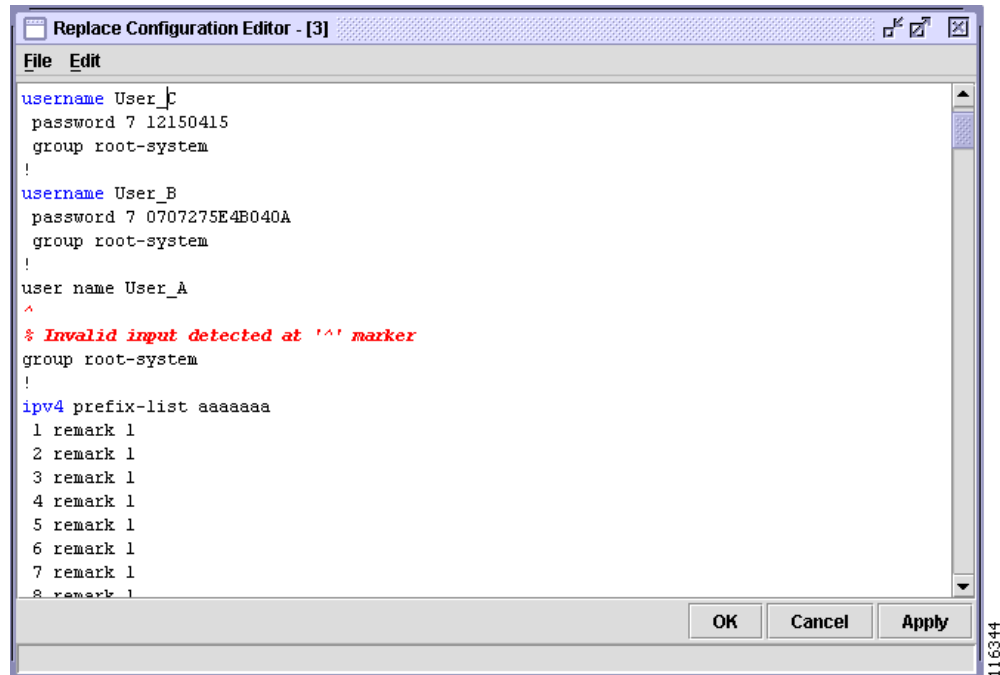
A chosen block of text or the entire contents of the Replace Configuration Editor can be checked for syntax errors.

To check the syntax, perform the following steps:

-
- Step 1** Choose the Replace Configuration Editor in the Configuration Applications pane.
 - Step 2** Select the text if you want to check a block of text.
 - Step 3** Choose **Tools > Syntax Check Selection**. The syntax is checked.

If there is a syntax error, an Invalid command error is displayed in red in the Replace Configuration Editor (see [Figure 4-5](#)).

Figure 4-5 Syntax Error Found



Step 4 Perform the following steps if there is a syntax error:



Note When you click the OK button or the Apply button, the syntax in the Replace Configuration Editor is automatically checked.

- a. Choose **Tools > Syntax Check Selection**.
- b. The syntax is checked. Repeat [Step 3](#) and [Step 4](#) if syntax errors are still detected.

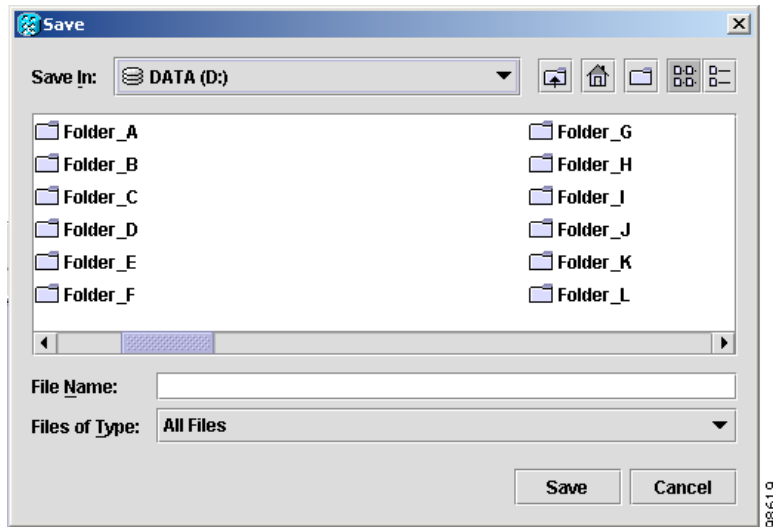
Step 5 When all syntax errors have been resolved and the Syntax Check dialog box appears, click **OK**.

Saving a Configuration in the Replace Configuration Editor

To save the configuration in the Replace Configuration Editor, perform the following steps:

- Step 1** Choose the Replace Configuration Editor in the Configuration Applications pane.
- Step 2** Choose **File > Save** or **File > Save As** to display the Save dialog box (see [Figure 4-6](#)). For a definition of the Save option and the Save As option, see [Table 4-1](#).

Figure 4-6 Save Dialog Box (Replace Configuration Editor)



- Step 3** Enter a filename in the File Name field.
- Step 4** Choose a location using the Save In drop-down arrow and pane.
- Step 5** Click **Save**. The configuration file is saved.

Cutting, Copying, and Pasting Text in the Replace Configuration Editor

You can cut, copy, and paste text in the Replace Configuration Editor. You can also copy text from another source (for example, CLI commands entered in Notepad) and paste it into the Replace Configuration Editor.

The Cut feature copies the chosen text to the Clipboard and removes the text from the Replace Configuration Editor.

To cut text, perform the following steps:

- Step 1** Choose the Replace Configuration Editor in the Configuration Applications pane.
- Step 2** Choose the text to cut in the Replace Configuration Editor application.
- Step 3** Choose one of the following options:
- Click the **Cut** icon (see [Figure 2-2](#)).
 - Press **Ctrl-X**.

The text is copied to the Clipboard and is removed from the Replace Configuration Editor.

Procedure

To copy the chosen text to the Clipboard, perform the following steps:

-
- Step 1** Choose the Replace Configuration Editor in the Configuration Applications pane.
- Step 2** Choose the text to copy in the Replace Configuration Editor application.
- Step 3** Choose one of the following options:
- Click the **Copy** icon (see [Figure 2-2](#)).
 - Press **Ctrl-C**.

The text is copied to the Clipboard.

Procedure

You can paste copied or cut content into a chosen location in the Replace Configuration Editor.

To paste text, perform the following steps:

-
- Step 1** Choose the Replace Configuration Editor in the Configuration Applications pane.
- Step 2** Select the location where you want the copied text in the Configuration Editor application.
- Step 3** Choose one of the following options:
- Click the **Paste** icon (see [Figure 2-2](#)).
 - Press **Ctrl-V**.

The text is copied in to the specified location in the Replace Configuration Editor application.
