



SIP UPDATE Message per RFC 3311

- [SIP UPDATE Message per RFC 3311, on page 1](#)

SIP UPDATE Message per RFC 3311

The SIP UPDATE Message per RFC 3311 feature provides Session Description Protocol (SDP) support for Session Initiation Protocol (SIP)-to-SIP calls. The SIP Service Provider Interface (SPI) is modified to support the following media changes using the UPDATE message:

- Early dialog SIP-to-SIP media changes.
- Mid dialog SIP-to-SIP media changes.

The Support for SIP UPDATE Message Per RFC 3311 feature is enabled by default on the Cisco Unified Border Element (UBE) and no configuration is required.

Feature Information for the SIP UPDATE Message per RFC 3311

The following table provides release information about the feature or features described in this module. This table lists only the software release that introduced support for a given feature in a given software release train. Unless noted otherwise, subsequent releases of that software release train also support that feature.

Use Cisco Feature Navigator to find information about platform support and Cisco software image support. To access Cisco Feature Navigator, go to <https://cfng.cisco.com/>. An account on Cisco.com is not required.

Table 1: Feature Information for Support for SIP UPDATE Message per RFC 3311

Feature Name	Releases	Feature Information
Support for SIP UPDATE Message per RFC 3311	Baseline Functionality	The Support for SIP UPDATE Message per RFC 3311 feature provides Session Description Protocol (SDP) support for Session Initiation Protocol (SIP)-to-SIP calls. The SIP Service Provider Interface (SPI) is modified to support the following media changes using the UPDATE message: <ul style="list-style-type: none">• Early dialog SIP-to-SIP media changes• Mid dialog SIP-to-SIP media changes

Prerequisites for SIP UPDATE Message per RFC 3311

- At least one offer or answer negotiation must be completed for Cisco UBE to handle the UPDATE message with SDP.
- An early dialog UPDATE message with SDP is processed only when both endpoints support the UPDATE message.
- For early dialog, both SIP endpoints must support PRACK and UPDATE method. Initial Offer-Answer must be completed with reliable provisional responses.

Restrictions for SIP UPDATE Message per RFC 3311

- An UPDATE message with SDP is not supported for SIP-to-H323 calls.
- An UPDATE message with SDP with a fully qualified domain name (FQDN) is not supported.
- Contact information in the UPDATE message is not supported.
- A retransmitted UPDATE message with SDP is ignored by the SIP stack. No response is sent for retransmitted UPDATE messages.
- CUBE rejects UPDATE with SDP in early dialog when peer SIP leg does not support UPDATE.

Information About SIP UPDATE Message per RFC 3311

The SIP Update per RFC 3311 feature uses existing mid-call SDP processing logic to negotiate the Offer-Answer with UPDATE, so all media features supported in CUBE with Re-INVITE are supported with UPDATE.

The images below illustrate the call flows when one call-leg supports UPDATE and the other leg does not support UPDATE in early dialog and mid-call dialog.

Figure 1: Early Dialog Update with SDP and Peer Leg does not support UPDATE

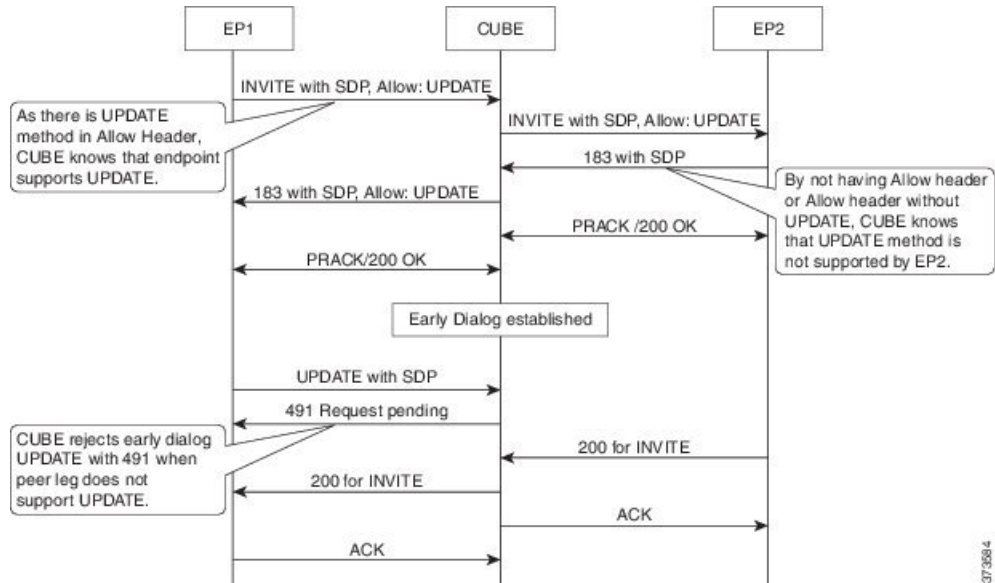


Figure 2: Mid-Dialog Update with SDP and Peer Leg does not support UPDATE

