



Per IP Subscriber DHCP Triggered RADIUS Accounting

Last Updated: November 29, 2012

The Per IP Subscriber DHCP Triggered RADIUS Accounting feature enables system administrators to track IP session activity on a per-subscriber basis and periodically extract subscriber accounting records. Transactions between the client and the RADIUS accounting server are authenticated via an Access Client module that maintains per-subscriber accounting statistics.

Per IP Subscriber RADIUS Accounting works with DHCP IP address assignment on Cisco 7600 series routers only, and it improves the authentication, authorization, and accounting (AAA) of broadband service delivery. Subscribers are attributed a unique AAA ID in addition to the unique ID created by DHCP in order to process secure START and STOP accounting messages and allow them to abstract accounting information in a client-server environment.

- [Finding Feature Information, page 1](#)
- [Prerequisites for Per IP Subscriber DHCP Triggered RADIUS Accounting, page 2](#)
- [Restrictions for Per IP Subscriber DHCP Triggered RADIUS Accounting, page 2](#)
- [Information About Per IP Subscriber DHCP Triggered RADIUS Accounting, page 2](#)
- [How to Configure Per IP Subscriber DHCP Triggered RADIUS Accounting, page 4](#)
- [Configuration Examples for Per IP Subscriber DHCP Triggered RADIUS Accounting, page 6](#)
- [Additional References, page 7](#)
- [Feature Information for Per IP Subscriber DHCP Triggered RADIUS Accounting, page 8](#)

Finding Feature Information

Your software release may not support all the features documented in this module. For the latest caveats and feature information, see [Bug Search Tool](#) and the release notes for your platform and software release. To find information about the features documented in this module, and to see a list of the releases in which each feature is supported, see the feature information table at the end of this module.

Use Cisco Feature Navigator to find information about platform support and Cisco software image support. To access Cisco Feature Navigator, go to www.cisco.com/go/cfn. An account on Cisco.com is not required.



Americas Headquarters:
Cisco Systems, Inc., 170 West Tasman Drive, San Jose, CA 95134-1706 USA

Prerequisites for Per IP Subscriber DHCP Triggered RADIUS Accounting

- You must configure accounting on a subset of RADIUS servers to which subscriber accounting statistics will be exported, as defined by the **aaa accounting** command.
- You must configure the number of IP address assignment leases offered to DHCP clients to only one per subscriber, as defined by the **ip dhcp limit lease per interface 1** command.

Restrictions for Per IP Subscriber DHCP Triggered RADIUS Accounting

- The Per IP Subscriber DHCP Triggered RADIUS Accounting feature is enabled only for subscribers operating with Access Type interfaces on a Cisco 7600 series Broadband Remote Access Server (BRAS).
- This feature does not support the collection of IP statistics from each source IP address. The feature collects IP statistics for each subinterface rather than each subscriber, and it is triggered only if the command to allow one IP address assignment via DHCP is configured.

Information About Per IP Subscriber DHCP Triggered RADIUS Accounting

- [Per IP Subscriber DHCP Triggered RADIUS Accounting Network Topology, page 2](#)
- [Per IP Subscriber Triggered RADIUS Accounting Behavior, page 3](#)

Per IP Subscriber DHCP Triggered RADIUS Accounting Network Topology

Per IP Subscriber DHCP Triggered RADIUS Accounting is implemented in a distributed networking environment, based on the following client-server components:

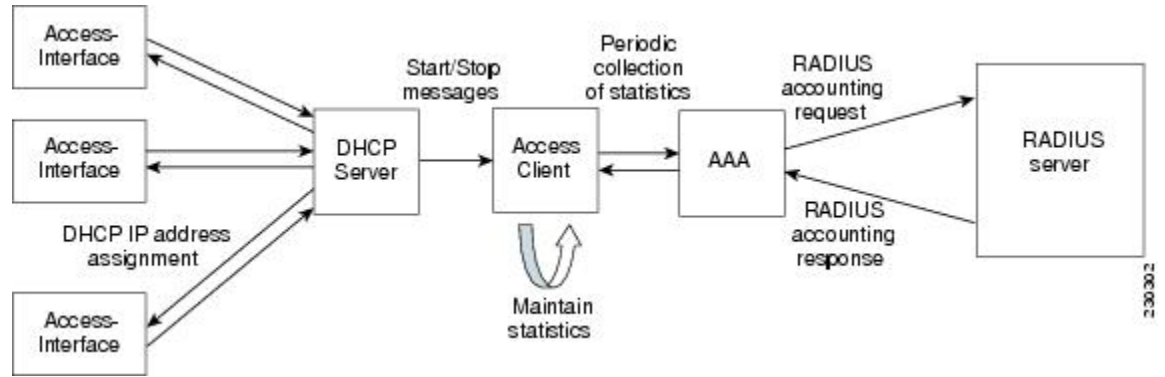
- Access Interface--Used by subscribers to operate on a Cisco 7600 router.
- DHCP Server--Grants permission to the DHCP client to use a particular IP address for a specified lease time.
- AAA Server--Transmits secure START and STOP accounting messages.

After the periodic timer is configured on the unit under test (UUT), the AAA module on the UUT sends an interim periodic update to the RADIUS server.

- RADIUS Server--Receives and responds to accounting requests.

The figure below shows how the Access Client, referred to as the “aaa-access-client” module, is initialized to serve as a client of the RADIUS accounting server. The module is independent of existing DHCP RADIUS Accounting modules.

Figure 1 AAA Access Client Module Interaction



The Access Client comprises two sub-modules that enable improved IP session awareness, tracking, and reporting functionality:

- Access-Subscriber Management module (Access-Acct-Mgmt): Invoked by a successful DHCP IP assignment, this sub-module generates a unique AAA ID for each subscriber that combines with the DHCP unique ID to track an accounting session.
- Access-Subscriber Accounting Management (Access-Acct-Update): Invoked by the AAA server, this sub-module collects subscriber statistics and periodically reports on the accounting session.
- [Benefits of Per IP Subscriber DHCP Triggered RADIUS Accounting, page 3](#)

Benefits of Per IP Subscriber DHCP Triggered RADIUS Accounting

IP Session Awareness and Security

RADIUS accounting provides information about subscribers’ network connections and usage in the form of accounting records.

The Access Client passes per-subscriber accounting statistics to the designated server, with a secure unique AAA ID. The periodic reporting of IP session activity gives system administrators the accounting information they need to make informed security, billing, and resource allocation decisions.

Per IP Subscriber Triggered RADIUS Accounting Behavior

When a client with an Access Type of interface is configured for Per IP Subscriber RADIUS Accounting, the statistics collection and reporting mechanism can be invoked by the DHCP module. A successful DHCP IP assignment or release triggers three types of accounting events via the Access Client module:

- 1 RADIUS accounting start: An Accounting Start packet, ACCT_START, is sent to the accounting server to flag the start of service delivery, the type of service being delivered, and the user it is being delivered to.
- 2 RADIUS accounting interim-update: An Accounting Interim Update packet, ACCT_UPDATE, is sent to the accounting server to flag an ongoing client association and IP session activity.

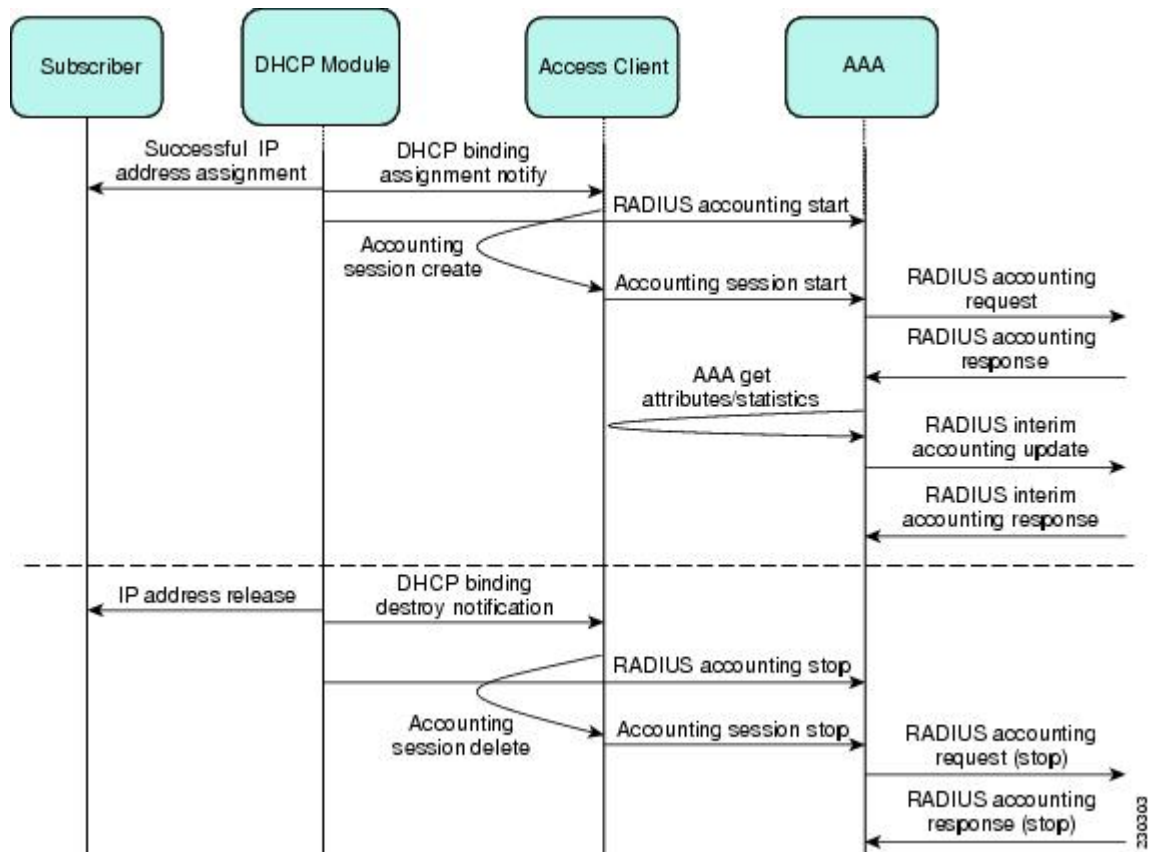
- 3 RADIUS accounting stop: An Accounting Stop packet, ACCT_STOP, is sent to the accounting server to flag the end of service delivery, the type of service that was delivered and optional statistics such as elapsed time, and input and output packets.

Accounting requests, for any packet type, are submitted to the RADIUS accounting server via the network, and are acknowledged in these forms:

- RADIUS Accounting Response (START)
- RADIUS Interim Accounting Response
- RADIUS Accounting Response (STOP)

The figure below shows the AAA Access Client process flow and how the client interacts with the required modules.

Figure 2 AAA Access Client Process Flow



How to Configure Per IP Subscriber DHCP Triggered RADIUS Accounting

- [Configuring Method Lists for Per IP Subscriber DHCP Triggered RADIUS Accounting, page 5](#)

Configuring Method Lists for Per IP Subscriber DHCP Triggered RADIUS Accounting

Each subscriber is configured on a per-interface basis. To invoke the Access Client and trigger the statistics collection mechanism on a subinterface, you must specify RADIUS as the accounting method and define a backup system for accounting in case the initial method fails. A method list is a named list describing the accounting methods to be queried in sequence.

Perform this task to configure a named method list for Per IP Subscriber DHCP Triggered RADIUS Accounting.

SUMMARY STEPS

1. **enable**
2. **configure terminal**
3. **interface** *type number* [*name-tag*] **access**
4. **encapsulation dot1q** *vlan-id* [**native**]
5. **ip address** *ip-address mask* [**secondary**]
6. **accounting dhcp source-ip aaa list** *method-list-name*
7. **end**

DETAILED STEPS

Command or Action	Purpose
Step 1 enable Example: Router> enable	Enables privileged EXEC mode. <ul style="list-style-type: none"> • Enter your password if prompted.
Step 2 configure terminal Example: Router# configure terminal	Enters global configuration mode.
Step 3 interface <i>type number</i> [<i>name-tag</i>] access Example: Router(config)# interface gigabitethernet 1/0/1.2 access	Configures an interface type and enters access interface configuration mode.

Command or Action	Purpose
<p>Step 4 <code>encapsulation dot1q vlan-id [native]</code></p> <p>Example:</p> <pre>Router(config-subif)# encapsulation dot1q 102</pre>	Enables IEEE 802.1q encapsulation of traffic on a specified subinterface in a virtual LAN (VLAN).
<p>Step 5 <code>ip address ip-address mask [secondary]</code></p> <p>Example:</p> <pre>Router(config-subif)# ip address 10.0.2.1 255.255.255.0</pre>	Sets a primary or secondary IP address for an interface.
<p>Step 6 <code>accounting dhcp source-ip aaa list method-list-name</code></p> <p>Example:</p> <pre>Router(config-subif)# accounting dhcp source- ip aaa list default</pre>	<p>Enables the Per IP Subscriber DHCP RADIUS Accounting feature for DHCP clients, and configures accounting method lists that define the way accounting will be performed and the sequence in which methods are performed.</p> <p>Use the <i>method-list-name</i> argument to apply the accounting method list to a subinterface.</p>
<p>Step 7 <code>end</code></p> <p>Example:</p> <pre>Router(config-subif)# end</pre>	Ends the current configuration session and returns to privileged EXEC mode.

Configuration Examples for Per IP Subscriber DHCP Triggered RADIUS Accounting

- [Subinterface RADIUS Accounting Configuration Example, page 6](#)

Subinterface RADIUS Accounting Configuration Example

In the following example, the **aaa accounting** command for periodic RADIUS accounting is issued in the context of an IP address assignment via DHCP. A named method list is not explicitly defined, and the default method list automatically applies to the subinterface. If no method list is defined, no accounting takes place.

```
configure terminal
aaa new-model
radius-server host 75.0.1.1 auth-port 1645 acct-port 1646 key lab
radius-server key lab
!
aaa accounting network default start-stop group radius
aaa accounting update periodic 1
end
```

```

!
configure terminal
ip dhcp pool pool1
    network 10.0.1.0 255.255.255.0
    lease 0 0 3
!
configure terminal
interface GigabitEthernet 1/0/1.2 access
encapsulation dot1q 102
ip address 10.0.2.1 255.255.255.0
accounting dhcp source-ip aaa list default
end

```

Additional References

The following sections provide references related to the Per IP Subscriber DHCP Triggered RADIUS Accounting feature.

Related Documents

Related Topic	Document Title
Configuring Accounting	Configuring Accounting feature module.
Security commands: complete command syntax, command mode, command history, defaults, usage guidelines, and examples.	<i>Cisco IOS Security Command Reference</i>

Standards

Standard	Title
None	--

MIBs

MIB	MIBs Link
None	To locate and download MIBs for selected platforms, Cisco IOS releases, and feature sets, use Cisco MIB Locator found at the following URL: http://www.cisco.com/go/mibs

RFCs

RFC	Title
None	--

Technical Assistance

Description	Link
<p>The Cisco Support website provides extensive online resources, including documentation and tools for troubleshooting and resolving technical issues with Cisco products and technologies.</p> <p>To receive security and technical information about your products, you can subscribe to various services, such as the Product Alert Tool (accessed from Field Notices), the Cisco Technical Services Newsletter, and Really Simple Syndication (RSS) Feeds.</p> <p>Access to most tools on the Cisco Support website requires a Cisco.com user ID and password.</p>	http://www.cisco.com/techsupport

Feature Information for Per IP Subscriber DHCP Triggered RADIUS Accounting

The following table provides release information about the feature or features described in this module. This table lists only the software release that introduced support for a given feature in a given software release train. Unless noted otherwise, subsequent releases of that software release train also support that feature.

Use Cisco Feature Navigator to find information about platform support and Cisco software image support. To access Cisco Feature Navigator, go to www.cisco.com/go/cfn. An account on Cisco.com is not required.

Table 1 Feature Information for Per IP Subscriber DHCP Triggered RADIUS Accounting

Feature Name	Releases	Feature Information
Per IP Subscriber DHCP Triggered RADIUS Accounting	12.2(33)SRB	<p>The Per IP Subscriber DHCP Triggered RADIUS Accounting feature enables system administrators to track IP session activity on a per-subscriber basis and periodically extract subscriber accounting records.</p> <p>In 12.2(33)SRB, this feature was introduced on the Cisco 7600 router.</p> <p>The following command was introduced by this feature: accounting dhcp source-ip aaa list.</p>

Cisco and the Cisco logo are trademarks or registered trademarks of Cisco and/or its affiliates in the U.S. and other countries. To view a list of Cisco trademarks, go to this URL: www.cisco.com/go/trademarks. Third-party trademarks mentioned are the property of their respective owners. The use of the word partner does not imply a partnership relationship between Cisco and any other company. (1110R)

Any Internet Protocol (IP) addresses and phone numbers used in this document are not intended to be actual addresses and phone numbers. Any examples, command display output, network topology diagrams, and other figures included in the document are shown for illustrative purposes only. Any use of actual IP addresses or phone numbers in illustrative content is unintentional and coincidental.

© 2012 Cisco Systems, Inc. All rights reserved.