



RSVP Local Policy Support

Last Updated: January 15, 2013

Feature History

Release	Modification
12.2(13)T	This feature was introduced.

This document describes the Resource Reservation Protocol (RSVP) Local Policy Support feature in Cisco IOS Release 12.2(13)T. It identifies the supported platforms, provides configuration examples, and lists related Cisco IOS command line interface (CLI) commands.

This document includes the following sections:

- [Finding Feature Information, page 1](#)
- [Feature Overview, page 2](#)
- [Supported Platforms, page 3](#)
- [Prerequisites, page 3](#)
- [Configuration Tasks, page 3](#)
- [Monitoring and Maintaining RSVP Local Policy Support, page 5](#)
- [Configuration Examples, page 6](#)
- [Additional References, page 6](#)
- [Feature Information for RSVP Local Policy Support, page 8](#)
- [Glossary, page 8](#)

Finding Feature Information

Your software release may not support all the features documented in this module. For the latest caveats and feature information, see [Bug Search Tool](#) and the release notes for your platform and software release. To find information about the features documented in this module, and to see a list of the releases in which each feature is supported, see the feature information table at the end of this module.

Use Cisco Feature Navigator to find information about platform support and Cisco software image support. To access Cisco Feature Navigator, go to www.cisco.com/go/cfn. An account on Cisco.com is not required.



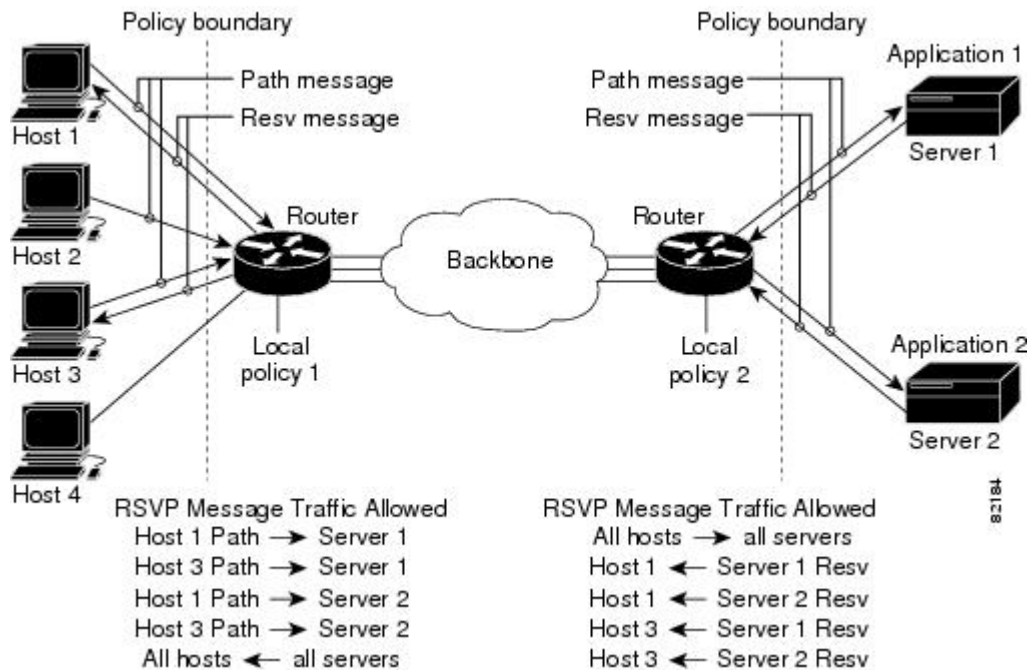
Americas Headquarters:
Cisco Systems, Inc., 170 West Tasman Drive, San Jose, CA 95134-1706 USA

Feature Overview

Network administrators need the ability to control the resources that RSVP reservations are allowed to use. For example, they may want to restrict RSVP reservations to certain subnets or from specific network servers.

The RSVP Local Policy Support feature allows network administrators to create default and access control list (ACL)-based policies. These policies, in turn, control how RSVP filters its signalling messages to allow or deny quality of service (QoS), as shown in the figure below, to networking applications based on the IP addresses of the requesting hosts.

Figure 1 *RSVP Local Policy Configuration*



- [Benefits of RSVP Local Policy Support, page 2](#)

Benefits of RSVP Local Policy Support

RSVP Reservation Control

Network administrators can restrict the source of RSVP reservations to specific endpoints.

RSVP Reservation Preemption

High priority reservations can preempt existing reservations if there is otherwise no bandwidth available for the new, high priority reservation.

Supported Platforms

For supported platforms in Cisco IOS Release 12.2(13)T, consult Cisco Feature Navigator.

Determining Platform Support Through Cisco Feature Navigator

Cisco IOS software is packaged in feature sets that are supported on specific platforms. To get updated information regarding platform support for this feature, access Cisco Feature Navigator. Cisco Feature Navigator dynamically updates the list of supported platforms as new platform support is added for the feature.

Cisco Feature Navigator is a web-based tool that enables you to determine which Cisco IOS software images support a specific set of features and which features are supported in a specific Cisco IOS image. You can search by feature or release. Under the release section, you can compare releases side by side to display both the features unique to each software release and the features in common.

To access Cisco Feature Navigator, you must have an account on Cisco.com. If you have forgotten or lost your account information, send a blank e-mail to cco-locksmith@cisco.com. An automatic check will verify that your e-mail address is registered with Cisco.com. If the check is successful, account details with a new random password will be e-mailed to you. Qualified users can establish an account on Cisco.com by following the directions found at this URL:

<http://www.cisco.com/register> <http://www.cisco.com/register>

Cisco Feature Navigator is updated regularly when major Cisco IOS software releases and technology releases occur. For the most current information, go to the Cisco Feature Navigator home page at the following URL:

<http://www.cisco.com/go/fn>

Availability of Cisco IOS Software Images

Platform support for particular Cisco IOS software releases is dependent on the availability of the software images for those platforms. Software images for some platforms may be deferred, delayed, or changed without prior notice. For updated information about platform support and availability of software images for each Cisco IOS software release, refer to the online release notes or, if supported, Cisco Feature Navigator.

Prerequisites

RSVP must be configured on two or more routers or on one router and one host within the network before you can use the RSVP Local Policy Support feature.

Configuration Tasks

- [Creating an RSVP Local Policy, page 4](#)
- [Specifying Command Line Interface Submodes, page 4](#)
- [Verifying RSVP Local Policy Configuration, page 4](#)

Creating an RSVP Local Policy

To create an RSVP local policy, use the following command beginning in global configuration mode:

Command	Purpose
<pre>Router(config)# ip rsvp policy local {default acl acl [acl1...acl8]}</pre>	Creates a local policy to determine how RSVP resources are used in a network.

Specifying Command Line Interface Submodes

To specify CLI submodes, use the following command beginning in local policy mode:

Command	Purpose
<pre>Router(config-rsvp-policy-local)# {accept forward } {all path path-error resv resv-error }</pre>	Defines the properties of the default or ACL-based local policy that you are creating.

See the **ip rsvp policy local** command in the Cisco IOS Quality of Service Solutions Command Reference for more detailed information on submodes.

Verifying RSVP Local Policy Configuration

To verify RSVP local policy configuration, use this procedure:

SUMMARY STEPS

1. Enter the **show ip rsvp policy** command to display policy-related information including local and default policies configured, Common Open Policy Service (COPS) servers configured, and the preemption parameter configured--enabled or disabled.
2. Enter the **show ip rsvp policy local detail** command to display information about the (selected) local policies currently configured.

DETAILED STEPS

Step 1

Enter the **show ip rsvp policy** command to display policy-related information including local and default policies configured, Common Open Policy Service (COPS) servers configured, and the preemption parameter configured--enabled or disabled.

Note There are no COPS servers configured in the following output.

Example:

```

Router# show ip rsvp policy
Local policy:
  A=Accept    F=Forward
  Path:-- Resv:-- PathErr:-- ResvErr:-- ACL:104
  Path:-- Resv:-- PathErr:-- ResvErr:-- ACL:None [Default policy]
COPS:
Generic policy settings:
  Default policy: Accept all
  Preemption:     Disabled

```

Step 2 Enter the **show ip rsvp policy local detail** command to display information about the (selected) local policies currently configured.

Example:

```

Router# show ip rsvp policy local detail
Local policy for ACL(s): 104
  Preemption Priority: Start at 0, Hold at 0.
  Local Override: Disabled.
      Accept    Forward
Path:      No      No
Resv:      No      No
PathError: No      No
ResvError: No      No
Default local policy:
  Preemption Priority: Start at 0, Hold at 0.
  Local Override: Disabled.
      Accept    Forward
Path:      No      No
Resv:      No      No
PathError: No      No
ResvError: No      No
Generic policy settings:
  Default policy: Accept all
  Preemption:     Disabled

```

Monitoring and Maintaining RSVP Local Policy Support

To monitor and maintain the RSVP Local Policy Support feature, use the following commands in EXEC mode:

Command	Purpose
Router# show ip rsvp policy	Displays either the configured COPS servers or the local policies.
Router# show ip rsvp policy local	Displays selected local policies that have been configured.
Router# show ip rsvp reservation detail	Displays detailed RSVP-related receiver information currently in the database.

Command	Purpose
Router# show ip rsvp sender detail	Displays detailed RSVP-related sender information currently in the database.

Configuration Examples

- [Example RSVP Local Policy Support, page 6](#)

Example RSVP Local Policy Support

In the following example, any RSVP nodes in the 192.168.101.0 subnet can initiate or respond to reservation requests, but all other nodes can respond only to reservation requests. This means that any 192.168.101.x node can send and receive Path, PathError, Resv, or ResvError messages. All other nodes can send only Resv or ResvError messages.

In the following example, ACL 104 is configured for a local policy:

```
Router# configure terminal
Router(config)# access-list 104 permit ip 192.168.101.0 0.0.0.255 any
Router(config)# ip rsvp policy local acl 104
Router(config-rsvp-policy-local)# forward
all
Router(config-rsvp-policy-local)# end
```

In the following example, a default local policy is configured:

```
Router(config)# ip rsvp policy local default
Router(config-rsvp-policy-local)# forward resv
Router(config-rsvp-policy-local)# forward resverror
Router(config-rsvp-policy-local)# end
```

Additional References

The following sections provide references related to the RSVP Local Policy Support feature.

Related Documents

Related Topic	Document Title
Cisco IOS commands	Cisco IOS Master Commands List, All Releases
QoS commands: complete command syntax, command modes, command history, defaults, usage guidelines, and examples	<i>Cisco IOS Quality of Service Solutions Command Reference</i>
Signalling Overview	"Signalling Overview" module
QoS configuration tasks related to RSVP	"Configuring RSVP" module

Related Topic	Document Title
Conceptual information and configuration tasks for classifying network traffic.	"Classifying Network Traffic" module
Congestion Management	"Congestion Management Overview" module
Cisco Unified Communications Manager (CallManager) and related features	"Overview of Cisco Unified Communications Manager and Cisco IOS Interoperability" module
Regular expressions	"Using the Cisco IOS Command-Line Interface" module

Standards

Standard	Title
No new or modified standards are supported by this feature, and support for existing standards has not been modified by this feature.	--

MIBs

MIB	MIBs Link
No new or modified MIBs are supported by this feature, and support for existing MIBs has not been modified by this feature.	To locate and download MIBs for selected platforms, Cisco IOS releases, and feature sets, use Cisco MIB Locator found at the following URL: http://www.cisco.com/go/mibs

RFCs

RFC	Title
None	--

Technical Assistance

Description	Link
The Cisco Support and Documentation website provides online resources to download documentation, software, and tools. Use these resources to install and configure the software and to troubleshoot and resolve technical issues with Cisco products and technologies. Access to most tools on the Cisco Support and Documentation website requires a Cisco.com user ID and password.	http://www.cisco.com/cisco/web/support/index.html

Feature Information for RSVP Local Policy Support

The following table provides release information about the feature or features described in this module. This table lists only the software release that introduced support for a given feature in a given software release train. Unless noted otherwise, subsequent releases of that software release train also support that feature.

Use Cisco Feature Navigator to find information about platform support and Cisco software image support. To access Cisco Feature Navigator, go to www.cisco.com/go/cfn. An account on Cisco.com is not required.

Table 1 Feature Information for RSVP Local Policy Support

Feature Name	Releases	Feature Information
RSVP Local Policy Support	Cisco IOS XE Release 3.8S	In Cisco IOS XE Release 3.8S, support was added for the Cisco ASR 903 Router.

Glossary

access control list-- See ACL.

ACL-- access control list. An ACL consists of individual filtering rules grouped together in a single list. It is generally used to provide security filtering, though it may be used to provide a generic packet classification facility.

flow --A stream of data traveling between two endpoints across a network (for example, from one LAN station to another). Multiple flows can be transmitted on a single circuit.

latency --The delay between the time a device receives a packet and the time that packet is forwarded out the destination port.

packet --A logical grouping of information that includes a header containing control information and (usually) user data. Packets most often refer to network layer units of data.

policy --Any defined rule that determines the use of resources within the network. A policy can be based on a user, a device, a subnetwork, a network, or an application.

port scanning --The act of systematically checking a computer's ports to find an access point.

Resource Reservation Protocol --See RSVP.

RSVP --Resource Reservation Protocol. A protocol for reserving network resources to provide quality of service guarantees to application flows.

router --A network layer device that uses one or more metrics to determine the optimal path along which network traffic should be forwarded. Routers forward packets from one network to another based on network layer information.

tunnel --A secure communications path between two peers, such as routers.

Voice over IP --See VoIP.

VoIP --Voice over IP. The ability to carry normal telephony-style voice over an IP-based Internet maintaining telephone-like functionality, reliability, and voice quality.

Cisco and the Cisco logo are trademarks or registered trademarks of Cisco and/or its affiliates in the U.S. and other countries. To view a list of Cisco trademarks, go to this URL: www.cisco.com/go/trademarks. Third-party trademarks mentioned are the property of their respective owners. The use of the word partner does not imply a partnership relationship between Cisco and any other company. (1110R)

Any Internet Protocol (IP) addresses and phone numbers used in this document are not intended to be actual addresses and phone numbers. Any examples, command display output, network topology diagrams, and other figures included in the document are shown for illustrative purposes only. Any use of actual IP addresses or phone numbers in illustrative content is unintentional and coincidental.

© 2013 Cisco Systems, Inc. All rights reserved.