



PfRv3 Transit Site Support

Starting with Cisco IOS XE Release 3.15S and Cisco IOS Release 15.5(2)T release, Performance Routing version 3 (PfRv3) supports multiple data centers at the hub site. The multi-data center or the transit site support feature enables service providers to scale their network infrastructure, and load-balance the traffic when required.

- [Feature Information for PfRv3 Transit Site Support, on page 1](#)
- [Prerequisites for PfRv3 Transit Site Support, on page 2](#)
- [Restrictions for PfRv3 Transit Site Support, on page 2](#)
- [Information About PfRv3 Transit Site Support, on page 2](#)
- [How to Configure Transit Site Support, on page 5](#)
- [Configuration Examples for PfRv3 Transit Site Support, on page 15](#)

Feature Information for PfRv3 Transit Site Support

The following table provides release information about the feature or features described in this module. This table lists only the software release that introduced support for a given feature in a given software release train. Unless noted otherwise, subsequent releases of that software release train also support that feature.

Use Cisco Feature Navigator to find information about platform support and Cisco software image support. To access Cisco Feature Navigator, go to www.cisco.com/go/cfn. An account on Cisco.com is not required.

Table 1: Feature Information for PfRv3 Transit Site Support

Feature Name	Releases	Feature Information
PfRv3 Transit Site Support	15.5(2)T Cisco IOS XE Release 3.15S	The PfRv3 Transit Site Support feature enables service providers to configure multiple-data centers at the hub site. The following commands were modified by this feature: master (domain VRF configuration), domain (interface configuration).

Prerequisites for PfRv3 Transit Site Support

- Upgrade all branch sites, hub, and transit sites with latest Cisco IOS image to enable transit site support feature.

Restrictions for PfRv3 Transit Site Support

- Multiple next hops are supported only on hub or transit hub.
- Basic tunnel function is not supported between an old Cisco IOS release version and a new version, if transit site support is enabled.
- Hub sites must be connected by a Layer 3 routed link, which provides primary routing between the hub sites. Routing between hub sites over the DMVPN network is not supported

Information About PfRv3 Transit Site Support

Information About Transit Site Support

The multi-data center or the transit site support feature enables service providers to scale their network infrastructure, and load-balance the traffic when required. The multi-data center support enables all the hub sites to be connected with all the branch sites in an enterprise network. For example, in a use case scenario, an organization with two data centers and a single branch site, the branch site can communicate with the master-hub controller through the two next-hops (hub-branch routers) located at the hub site. If one hub-border router is down, then the branch site can still communicate through the second hub-border router. To differentiate the traffic from different hub-border routers, a path-id is configured on each interface of every channel. The branch router determines the inbound traffic based on the path-id of hub-branch routers. A path-id is a unique 32-bit number for a path between two sites.

PfRv3 Transit Site Use Case Scenarios

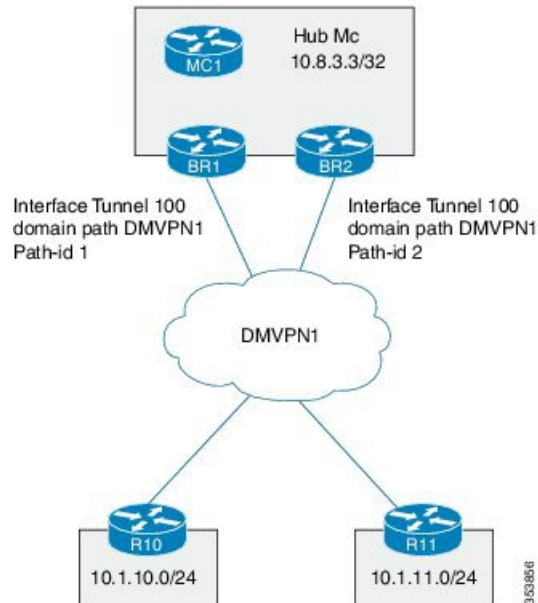
The transit site support feature supports the following use case scenarios:

- Single data center with multiple borders
- Dual data center with multiple borders
- Dual data center with same prefix

Single Data Center with Multiple Borders

In the following illustration, spoke A (R10) is connected to two (BR1 and BR2) DMVPN hubs in a single Dynamic Multipoint VPN (DMVPN) domain. There are two paths and two next-hops to the hub site from the spoke A. To differentiate traffic from different ISP paths, a path-id is added on each domain path. Use the `domain domain-name path path-name path-id` command to configure the path-ids.

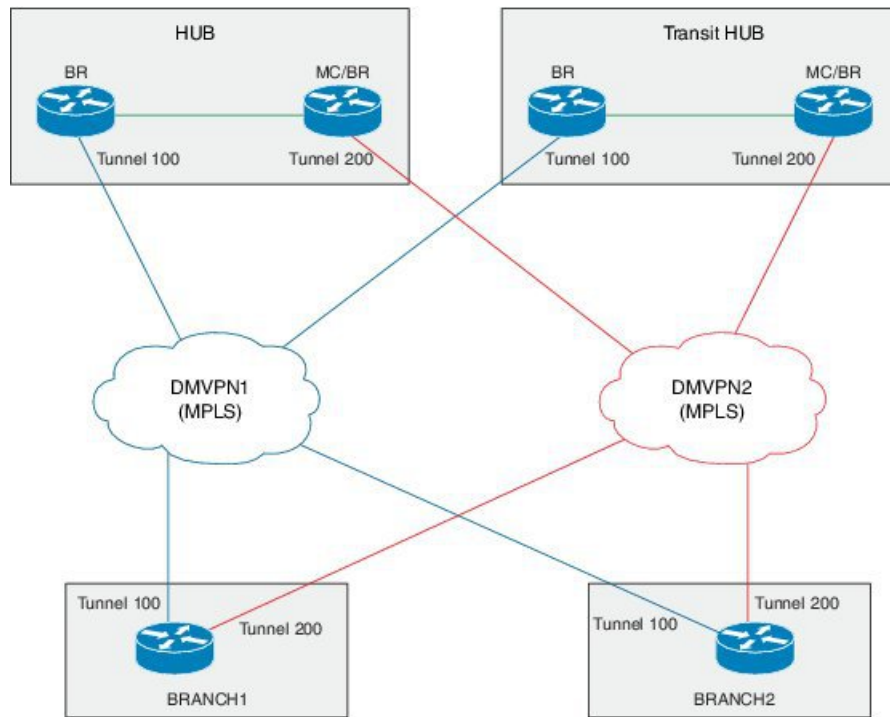
Figure 1: Single Data Center with Multiple Borders



Dual Data Center with Multiple Borders

In the following illustration, the two data centers are connected to all the branch sites. You can use both the data centers in active mode and use separate prefixes for both the data centers. To differentiate the traffic originating from different data centers, a transit-id is assigned to each data center. The valid range for a transit-id is from 1 to 62. By default, 0 is assigned to the master hub. Use the **master transit** command to configure the transit-id.

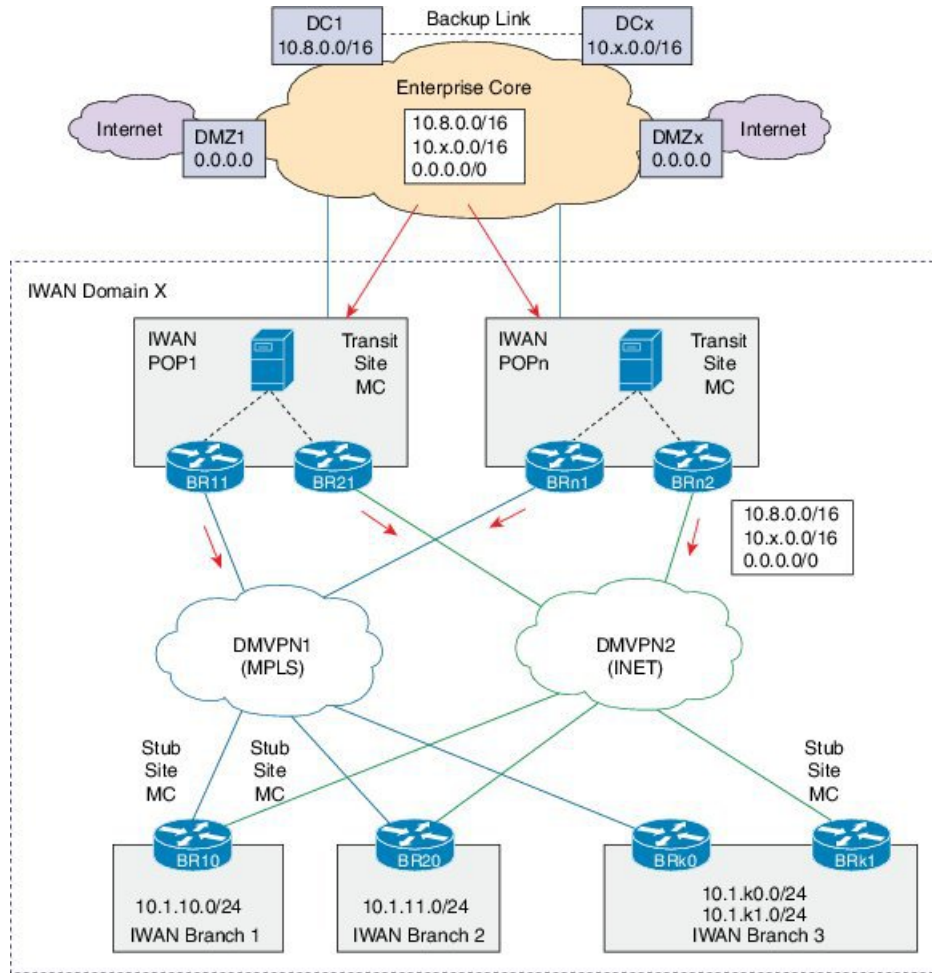
Figure 2: Dual Data Center with Multiple Borders



Dual Data Center with Same Prefix

In the following illustration, two data centers are connected to all the branch sites. However, in this scenario both the data centers are active and load-balance the traffic. If one data center is down, then traffic is routed through the other data center. Both the data centers share the same prefix.

Figure 3: Dual Data Center with Same Prefix



How to Configure Transit Site Support

Configuring Transit Hub

Before you begin

Configure the primary hub before configuring the transit hub.



Note In the current release, transit hub support is available only on Cisco ASR 1000 Series Aggregation Services Routers and Cisco 4000 Series Integrated Services Routers.



Note All policies are configured on the primary hub-master controller.

SUMMARY STEPS

1. **enable**
2. **configure terminal**
3. **interface loopback** *interface-number*
4. **exit**
5. **domain** {*domain-name* | **default**}
6. **vrf** {*vrf-name* | **default**}
7. **master transit** *pop-id*
8. **source-interface loopback** *interface-number*
9. **site-prefixes prefix-list** *site -list*
10. **hub** *ip-address*
11. **exit**
12. **end**
13. (Optional) **show domain** *domain-name* **master status**

DETAILED STEPS

	Command or Action	Purpose
Step 1	enable Example: Device> enable	Enables privileged EXEC mode. <ul style="list-style-type: none"> • Enter your password if prompted.
Step 2	configure terminal Example: Device# configure terminal	Enters global configuration mode.
Step 3	interface loopback <i>interface-number</i> Example: Device(config)# interface Loopback0	Enters interface configuration mode.
Step 4	exit Example: Device(config-if)# exit	Exits interface configuration mode and returns to global configuration mode.
Step 5	domain { <i>domain-name</i> default } Example:	Enters domain configuration mode.

	Command or Action	Purpose
	Device(config)# domain default	Note You can either configure a default domain or define a specific domain for the transit hub configuration. If you are defining a specific domain, for example "domain-cisco", you must configure the same domain for all devices for PfRv3 configuration.
Step 6	vrf { <i>vrf-name</i> default } Example: Device(config-domain)# vrf default	Configures default Virtual Routing and Forwarding (VRF) instances for the default or specific domain.
Step 7	master transit <i>pop-id</i> Example: Device(config-domain-vrf)# master transit 1	Enters master-controller configuration mode and configures the master as a transit hub. The valid range for a pop-id is from 1 to 62.
Step 8	source-interface loopback <i>interface-number</i> Example: Device(config-domain-vrf-mc)# source-interface Loopback0	Configures the loopback used as a source for peering with other sites or master controller. Note The source-interface loopback also serves as a site ID of a particular site (hub or branch) on the master controller.
Step 9	site-prefixes prefix-list <i>site -list</i> Example: Device(config-domain-vrf-mc)# site-prefixes prefix-list Data_Center_1	Configures the prefix-list containing list of site prefixes. Note You must configure the static-site prefix list for a hub and transit sites.
Step 10	hub <i>ip-address</i> Example: Device(config-domain-vrf-mc)# hub 10.8.3.3	Configures the hub for the transit site.
Step 11	exit Example: Device(config-domain-vrf-mc)# exit	Exits from master controller configuration mode and returns to domain configuration mode. Note Exit from domain configuration mode and enter in global configuration mode using the exit command.
Step 12	end Example: Device(config)# end	Exits configuration mode and returns to privileged EXEC mode.
Step 13	(Optional) show domain <i>domain-name</i> master status Example: Device# show domain one master status	Use this show command to display the status of a master controller.

Configuring Transit Site Border Routers



Note In Cisco IOS XE Release 3.15S and Cisco IOS Release 15.5(2)T release, the transit site support is available only on Cisco ASR 1000 Series Aggregation Services Routers and Cisco 4000 Series Integrated Services Routers.

In a transit site support scenario, you must configure hub-border routers with the following:

- The source interface of the border router
- The IP address of the hub-master controller
- The domain path name on external interfaces
- The domain path ID for each external interface

To configure multiple hub-border routers to the same ISP path, perform the following task on each hub-border router.

SUMMARY STEPS

1. **enable**
2. **configure terminal**
3. **interface loopback** *interface-number*
4. **ip address** *ip-address-mask*
5. **exit**
6. **domain** {*domain-name* | **default**}
7. **vrf** {*vrf-name* | **default**}
8. **border**
9. **source-interface loopback** *interface-number*
10. **master** *ip-address*
11. **exit**
12. **exit**
13. **exit**
14. **interface** *tunnel-name*
15. **ip address** *ip-address mask*
16. **description** *description-line*
17. **domain** *domain-name path path-name path-id path-id*
18. **end**
19. (Optional) **show domain** *domain-name border status*

DETAILED STEPS

	Command or Action	Purpose
Step 1	enable Example:	Enables privileged EXEC mode. <ul style="list-style-type: none"> • Enter your password if prompted.

	Command or Action	Purpose
	Device> enable	
Step 2	configure terminal Example: Device# configure terminal	Enters global configuration mode.
Step 3	interface loopback <i>interface-number</i> Example: Device(config)# interface Loopback0	Enters interface configuration mode.
Step 4	ip address <i>ip-address-mask</i> Example: Device(config-if)# ip address 10.9.4.4 255.255.255.255	Configures an IP address for an interface on the hub-border router (Border Router 1).
Step 5	exit Example: Device(config-if)# exit	Exits interface configuration mode and returns to global configuration mode.
Step 6	domain { <i>domain-name</i> default } Example: Device(config)# domain default	Enters domain configuration mode.
Step 7	vrf { <i>vrf-name</i> default } Example: Device(config-domain)# vrf default	Configures Virtual Routing and Forwarding (VRF) for the default domain. Note You can configure specific VRF definition for the hub-border configuration.
Step 8	border Example: Device(config-domain-vrf)# border	Enters border configuration mode and configures the device as border.
Step 9	source-interface loopback <i>interface-number</i> Example: Device(config-domain-vrf-br)# source-interface Loopback0	Configures the loopback used as a source for peering with other sites or master controller.
Step 10	master <i>ip-address</i> Example: Device(config-domain-vrf-br)# master 10.9.3.3	Configures the IP address of the hub-master controller.

	Command or Action	Purpose
Step 11	exit Example: Device(config-domain-vrf-br)# exit	Exits border configuration mode and enters VRF configuration mode.
Step 12	exit Example: Device(config-domain-vrf)# exit	Exits VRF configuration mode and enters domain configuration mode.
Step 13	exit Example: Device(config-domain)# exit	Exits domain configuration mode and enters global configuration mode.
Step 14	interface <i>tunnel-name</i> Example: Device(config)# interface Tunnel100	Enters interface configuration mode.
Step 15	ip address <i>ip-address mask</i> Example: Device(config-if)# ip address 10.0.100.84 255.255.255.0	Configures an IP address for the tunnel interface.
Step 16	description <i>description-line</i> Example: Device1(config-if)# description primary path Device2(config-if)# description secondary path	Configures a description to associate with an ISP path.
Step 17	domain <i>domain-name path path-name path-id path-id</i> Example: Device(config-if)# domain default path MPLS path-id 1	<p>Configures the Internet Service Provider (ISP) associated with the domain and the path. There are two types of external interfaces, enterprise link such as DMVPN tunnel interface and internet -bound interface. Multiple next hop is supported only on DMVPN tunnel interfaces. The path-id is a unique identifier for each path in a domain. Valid values for a path-id are from 1 to 62.</p> <p>We recommend using front VRF on the tunnel interface for enterprise links.</p> <p>Note You can configure multiple ISPs. If you are defining specific domain name for example, domain_cisco, you must specify the same domain name for configuring ISP paths.</p> <p>You must assign a unique path-id for all the paths that are connected from hub-border routers to the same ISP domain.</p>
Step 18	end Example:	Exits interface configuration mode and returns to privileged EXEC mode.

	Command or Action	Purpose
	Device(config-if)# end	
Step 19	(Optional) show domain <i>domain-name</i> border status Example: Device# show domain default border status	Use this show command to display the status of a border router.

What to do next

Verifying PfRv3 Transit Site Support

Verifying PfRv3 Transit Site Support

The **show** commands can be entered in any order.

Before you begin

Configure multiple DMVPN paths from hub-border routers or from transit-hub border routers.

SUMMARY STEPS

1. **show domain** *domain-name* **master channels**
2. **show domain** *domain-name* **border channel**
3. **show domain** *domain-name* **master site-prefix**
4. **show domain** *domain-name* **border site-prefix**
5. **show domain** *domain-name* **master channels dst-site-id** *destination-site-id*

DETAILED STEPS**Step 1** **show domain** *domain-name* **master channels**

Displays channel information of the hub-master controller.

Example:

```
HubMC# show domain default master channels
```

```
-----
Channel Id: 8  Dst Site-Id: 10.2.11.11  Link Name: MPLS  DSCP: default [0] pfr-label: 0:0 | 2:30
[0x21E] TCs: 0
Channel Created: 03:19:14 ago
Provisional State: Initiated and open
Operational state: Available but unreachable
Channel to hub: FALSE
Interface Id: 11
Supports Zero-SLA: Yes
Muted by Zero-SLA: No
Estimated Channel Egress Bandwidth: 0 Kbps
Immitigable Events Summary:
  Total Performance Count: 0, Total BW Count: 0
ODE Stats Bucket Number: 1
Last Updated   : 00:00:21 ago
  Packet Count  : 0
  Byte Count    : 0
```

```

One Way Delay : N/A
Loss Rate Pkts : N/A
Loss Rate Bytes: N/A
Jitter Mean   : N/A
Unreachable   : TRUE
ODE Stats Bucket Number: 2
Last Updated  : 00:00:52 ago
Packet Count  : 0
Byte Count   : 0
One Way Delay : N/A
Loss Rate Pkts : N/A
Loss Rate Bytes: N/A
Jitter Mean   : N/A
Unreachable   : TRUE
TCA Statistics:
  Received:355 ; Processed:354 ; Unreach_rcvd:355
Latest TCA Bucket
Last Updated  : 00:00:21 ago
Local unreachable TCA received(Check for stale TCA 00:00:09 later)
.
.
.
-----

```

Step 2 **show domain *domain-name* border channel**

Displays the information of border router channels at the hub site.

Example:

```
HubBR# show domain default border channels
```

```

-----
Border Smart Probe Stats:

Smart probe parameters:
Source address used in the Probe: 10.2.10.10
Unreach time: 1000 ms
Probe source port: 18000
Probe destination port: 19000
Interface Discovery: ON
Probe freq for channels with traffic :10 secs
Discovery Probes: OFF
Number of transit probes consumed :29
Number of transit probes re-routed: 0
DSCP's using this: [0] [1] [2] [3] [4] [5] [6] [7] [8] [9] [10] [11] [12] [13] [14] [15] [16] [17]
[18] [19] [20] [21] [22] [23] [24] [25] [26] [27] [28] [29] [30] [31] [32] [33] [34] [35] [36] [37]
[38] [39] [40] [41] [42] [43] [44] [45] [46] [47] [48] [49] [50] [51] [52] [53] [54] [55] [56] [57]
[58] [59] [60] [61] [62] [63] [64]
All the other DSCPs use the default interval: 10 secs

Channel id: 20
Channel create time: 06:42:54 ago
Site id : 10.2.11.11
DSCP : default[0]
Service provider : MPLS
Pfr-Label : 0:0 | 0:0 [0x0]
exit path-id: 0
Exit path-id sent on wire: 0
Number of Probes sent : 77407
Number of Probes received : 75949
Last Probe sent : 00:00:00 ago
Last Probe received : 00:00:00 ago
Channel state : Initiated and open
Channel next_hop : 10.0.100.11

```

```

RX Reachability : Reachable
TX Reachability : Reachable
Channel is sampling 0 flows
Channel remote end point: 10.0.100.11
Channel to hub: FALSE
Version: 3
Supports Zero-SLA: Yes
Muted by Zero-SLA: No
Probe freq with traffic : 1 in 10000 ms

```

```

.
.
.
-----

```

Step 3 **show domain *domain-name* master site-prefix**

Displays the details of site-prefixes configured to the master hub.

Example:

```
HubMC# show domain default master site-prefix
```

```

-----
Load for five secs: 0%/0%; one minute: 0%; five minutes: 0%
Time source is NTP, 11:28:29.421 CET Tue Mar 17 2015

```

```

Change will be published between 5-60 seconds
Next Publish 00:33:03 later
Prefix DB Origin: 10.9.3.3
Prefix Flag: S-From SAF; L-Learned; T-Top Level; C-Configured; M-shared

```

Site-id	Site-prefix	Last Updated	DC Bitmap	Flag
10.2.10.10	10.1.10.0/24	01:25:15 ago	0x0	S
10.2.11.11	10.1.11.0/24	01:25:19 ago	0x0	S
10.2.10.10	10.2.10.10/32	01:25:15 ago	0x0	S
10.2.11.11	10.2.11.11/32	01:25:19 ago	0x0	S
10.2.12.12	10.2.12.12/32	01:28:54 ago	0x0	S
10.8.3.3	10.8.3.3/32	01:28:47 ago	0x1	S
10.9.3.3	10.8.0.0/16	01:28:47 ago	0x5	C,M
10.8.3.3	10.8.0.0/16	01:28:47 ago	0x5	C,M
10.9.3.3	10.9.3.3/32	03:29:04 ago	0x4	L
10.9.3.3	10.9.0.0/16	01:28:47 ago	0x5	C,M
10.8.3.3	10.9.0.0/16	01:28:47 ago	0x5	C,M
255.255.255.255	*10.0.0.0/8	01:28:47 ago	0x1	S,T

Step 4 **show domain *domain-name* border site-prefix**

Displays the details of site-prefixes configured on the border.

Example:

```
HubBR# show domain default border site-prefix
```

```

-----
Prefix Flag: S-From SAF; L-Learned; T-Top Level; C-Configured; M-shared

```

Site-id	Site-prefix	Last Updated	DC Bitmap	Flag
10.2.10.10	10.1.10.0/24	00:36:58 ago	0x0	S
10.2.11.11	10.1.11.0/24	00:37:02 ago	0x0	S

```

10.2.10.10          10.2.10.10/32          00:36:58 ago          0x0          S
10.2.11.11          10.2.11.11/32          00:37:02 ago          0x0          S
10.2.12.12          10.2.12.12/32          00:40:37 ago          0x0          S
10.8.3.3            10.8.3.3/32            00:40:29 ago          0x1          S
10.9.3.3            10.8.0.0/16            00:38:40 ago          0x5          S,C,M
10.8.3.3            10.8.0.0/16            00:38:40 ago          0x5          S,C,M
10.9.3.3            10.9.3.3/32            00:38:40 ago          0x4          S
10.9.3.3            10.9.0.0/16            00:38:40 ago          0x5          S,C,M
10.8.3.3            10.9.0.0/16            00:38:40 ago          0x5          S,C,M
255.255.255.255    *10.0.0.0/8            00:40:29 ago          0x1          S,T
-----

```

Step 5 **show domain** *domain-name* **master channels** *dst-site-id* *destination-site-id*

Displays the details of destination site-ids configured with hub-master controller.

Note Use this command on a spoke or a branch device to view the details of the destination site-ids.

Example:

```
BR# show domain default master channels dst-site-id 10.8.3.3
```

```
-----
Legend: * (Value obtained from Network delay:)
```

```

Channel Id: 27 Dst Site-Id: 10.8.3.3 Link Name: INET DSCP: default [0] pfr-label: 0:20 | 0:0
[0x140000] TCs: 0
Channel Created: 01:16:34 ago
Provisional State: Initiated and open
Operational state: Available
Channel to hub: TRUE
Interface Id: 12
Supports Zero-SLA: Yes
Muted by Zero-SLA: No
Estimated Channel Egress Bandwidth: 5 Kbps
Immitigable Events Summary:
Total Performance Count: 0, Total BW Count: 0
Site Prefix List
  10.8.3.3/32 (Active)
  10.8.0.0/16 (Active)
  10.9.0.0/16 (Standby)
ODE Stats Bucket Number: 1
Last Updated : 00:00:24 ago
Packet Count : 562
Byte Count : 47208
One Way Delay : 71 msec*
Loss Rate Pkts: 0.0 %
Loss Rate Byte: 0.0 %
Jitter Mean : 619 usec
Unreachable : FALSE
ODE Stats Bucket Number: 2
Last Updated : 00:00:54 ago
Packet Count : 558
Byte Count : 46872
One Way Delay : 55 msec*
Loss Rate Pkts: 0.0 %
Loss Rate Byte: 0.0 %
Jitter Mean : 556 usec
Unreachable : FALSE
TCA Statistics:
Received:133 ; Processed:133 ; Unreach_rcvd:0
Latest TCA Bucket
Last Updated : 00:00:24 ago

```

```

One Way Delay : 71 msec*
Loss Rate Pkts: NA
Loss Rate Byte: NA
Jitter Mean   : NA
Unreachability: FALSE

```

```

.
.
.

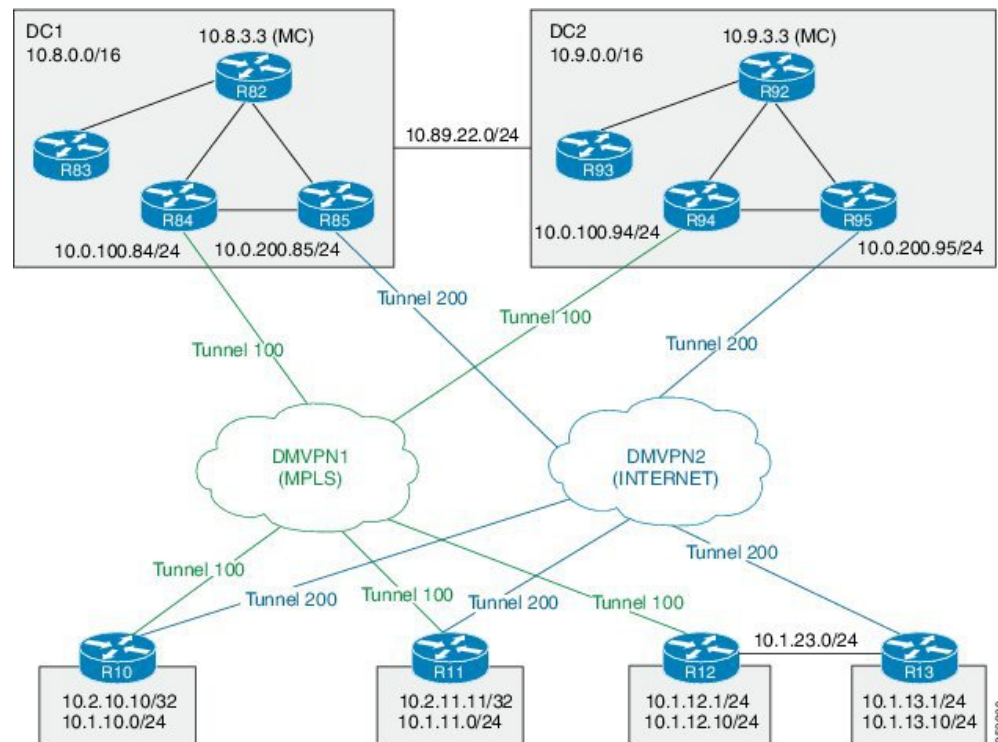
```

Configuration Examples for PfRv3 Transit Site Support

Example: Configuring Transit Site Support

In this use case scenario, an enterprise organization has two data centers with multiple-border routers connected to the same ISP domain. The branch-border routers can reach the hub-master controller through multiple next-hops.

Figure 4: PfRv3 Transit Hub Topology



In this example, the following routers are used:

- Hub Master Controller — Cisco ASR 1002-X router configured with an embedded services processor (ESP) default bandwidth of 5 Gbps upgradable with software licensing options to 10 Gbps, 20 Gbps, and 36 Gbps.

- Hub Border Routers — Cisco ASR 1000 Series Embedded Services Processor 2
- Branch Routers — Cisco 4451X Integrated Services Router.

Example: Configuring Data Center 1 (DC1) Devices

Configure the interfaces on master hub controller (R82)

```
HubMC> enable
HubMC# configure terminal
HubMC (config)# interface Loopback0
HubMC (config-if)# ip address 10.8.3.3 255.255.255.255
HubMC (config-if)# exit
```

Configure the device as hub-master controller

```
HubMC (config)# domain default
HubMC (config-domain)# vrf default
HubMC (config-domain-vrf)# master hub
HubMC (config-domain-vrf-mc)# source-interface Loopback0
HubMC (config-domain-vrf-mc)# enterprise-prefix prefix-list ENTERPRISE_PREFIX
HubMC (config-domain-vrf-mc)# site-prefixes prefix-list DC1_PREFIX
HubMC (config-domain-vrf-mc)# exit
```

Configure IP prefix-lists

```
HubMC (config)# ip prefix-list DC1_PREFIX seq 10 permit 10.8.0.0/16
HubMC (config)# ip prefix-list DC1_PREFIX seq 10 permit 10.9.0.0/16
HubMC (config)# ip prefix-list ENTERPRISE_PREFIX seq 10 permit 10.0.0.0/8
```

Configure domain policies on hub master controller

```
HubMC (config)# domain default
HubMC (config-domain)# vrf default
HubMC (config-domain-vrf)# master hub
HubMC (config-domain-vrf-mc)# source-interface Loopback0
HubMC (config-domain-vrf-mc)# site-prefixes prefix-list DC1_PREFIX
HubMC (config-domain-vrf-mc)# load-balance
HubMC (config-domain-vrf-mc)# enterprise-prefix prefix-list ENTERPRISE_PREFIX

HubMC (config-domain-vrf-mc)# class VOICE sequence 10
HubMC (config-domain-vrf-mc-class)# match dscp ef policy custom
HubMC (config-domain-vrf-mc-class-type)# priority 2 loss threshold 5
HubMC (config-domain-vrf-mc-class-type)# priority 1 one-way-delay threshold 150
HubMC (config-domain-vrf-mc-class-type)# exit
HubMC (config-domain-vrf-mc-class)# path-preference MPLS fallback INET
HubMC (config-domain-vrf-mc-class)# exit

HubMC (config-domain-vrf-mc)# class VIDEO sequence 20
HubMC (config-domain-vrf-mc-class)# match dscp af41 policy custom
HubMC (config-domain-vrf-mc-class-type)# priority 2 loss threshold 5
HubMC (config-domain-vrf-mc-class-type)# priority 1 one-way-delay threshold 150
HubMC (config-domain-vrf-mc-class-type)# exit
HubMC (config-domain-vrf-mc-class)# match dscp cs4 policy custom
HubMC (config-domain-vrf-mc-class-type)# priority 2 loss threshold 5
HubMC (config-domain-vrf-mc-class-type)# priority 1 one-way-delay threshold 150
HubMC (config-domain-vrf-mc-class-type)# exit
HubMC (config-domain-vrf-mc-class)# path-preference INET fallback MPLS
HubMC (config-domain-vrf-mc-class)# exit

HubMC (config-domain-vrf-mc)# class CRITICAL sequence 30
```



```

HubMC(config-domain-vrf-mc-class)# match dscp af31 policy custom
HubMC(config-domain-vrf-mc-class-type)# priority 2 loss threshold 10
HubMC(config-domain-vrf-mc-class-type)# priority 1 one-way-delay threshold 600
HubMC(config-domain-vrf-mc-class-type)# exit
HubMC(config-domain-vrf-mc-class)# path-preference MPLS fallback INET
HubMC(config-domain-vrf-mc)# class DEFAULT sequence 100
HubMC(config-domain-vrf-mc-class)# match dscp default policy custom
HubMC(config-domain-vrf-mc-class-type)# priority 2 loss threshold 5
HubMC(config-domain-vrf-mc-class-type)# priority 1 one-way-delay threshold 50
HubMC(config-domain-vrf-mc-class-type)# priority 3 jitter threshold 20000
HubMC(config-domain-vrf-mc-class-type)# exit

```

Configure hub border routers on DC1 (R84)

```

BR84> enable
BR84# configure terminal
BR84(config)# interface Loopback0
BR84(config-if)# ip address 10.8.4.4 255.255.255.255
BR84(config-if)# exit

```

Configure the device as border router (BR84)

```

BR84(config)# domain default
BR84(config-domain)# vrf default
BR84(config-domain-vrf)# border
BR84(config-domain-vrf-br)# source-interface Loopback0
BR84(config-domain-vrf-br)# master 10.8.3.3
BR84(config-domain-vrf-br)# exit

```

Configure tunnel from BR84 to DMVPN1 (MPLS)Link

```

BR84(config)# interface Tunnel100
BR84(config-if)# bandwidth 100000
BR84(config-if)# ip address 10.0.100.84 255.255.255.0
BR84(config-if)# no ip redirects
BR84(config-if)# ip mtu 1400
BR84(config-if)# ip nhrp authentication cisco
BR84(config-if)# ip nhrp map multicast dynamic
BR84(config-if)# ip nhrp network-id 1
BR84(config-if)# ip nhrp holdtime 60
BR84(config-if)# ip nhrp redirect
BR84(config-if)# ip tcp adjust-mss 1360
BR84(config-if)# load-interval 30
BR84(config-if)# delay 1000
BR84(config-if)# tunnel source Ethernet0/1
BR84(config-if)# tunnel mode gre multipoint
BR84(config-if)# tunnel key 100
BR84(config-if)# tunnel vrf IWAN-TRANSPORT-1
BR84(config-if)# domain path MPLS path-id 10

```

Configure hub border routers on DC1 (R85)

```

BR85> enable
BR85# configure terminal
BR85(config)# interface Loopback0
BR85(config-if)# ip address 10.8.5.5 255.255.255.255
BR85(config-if)# exit

```

Configure the device as border router (BR85)

```

BR85(config)# domain default
BR85(config-domain)# vrf default
BR85(config-domain-vrf)# border
BR85(config-domain-vrf-br)# source-interface Loopback0

```

Example: Configuring Transit Site Support

```
BR85(config-domain-vrf-br)# master 10.8.3.3
BR85(config-domain-vrf-br)# exit
```

Configure tunnel from BR84 to DMVPN2 (INET)Link

```
BR85(config)# interface Tunnel200
BR85(config-if)# bandwidth 5000
BR85(config-if)# ip address 10.0.200.85 255.255.255.0
BR85(config-if)# no ip redirects
BR85(config-if)# ip mtu 1400
BR85(config-if)# ip nhrp authentication cisco
BR85(config-if)# ip nhrp map multicast dynamic
BR85(config-if)# ip nhrp network-id 2
BR85(config-if)# ip nhrp holdtime 60
BR85(config-if)# ip nhrp redirect
BR85(config-if)# ip tcp adjust-mss 1360
BR85(config-if)# load-interval 30
BR85(config-if)# delay 1000
BR85(config-if)# tunnel source Ethernet0/1
BR85(config-if)# tunnel mode gre multipoint
BR85(config-if)# tunnel key 200
BR85(config-if)# tunnel vrf IWAN-TRANSPORT-2
BR85(config-if)# domain path INET path-id 20
```

Example: Configuring Data Center 2 (DC2) Devices**Configure the interfaces on master hub controller (R92)**

```
HubMC> enable
HubMC# configure terminal
HubMC(config)# interface Loopback0
HubMC(config-if)# ip address 10.9.3.3 255.255.255.255
HubMC(config-if)# exit
```

Configure the device as transit-hub master controller

```
HubMC(config)# domain default
HubMC(config-domain)# vrf default
HubMC(config-domain-vrf)# master transit 2
HubMC(config-domain-vrf-mc)# source-interface Loopback0
HubMC(config-domain-vrf-mc)# site-prefixes prefix-list DC2_PREFIX
HubMC(config-domain-vrf-mc)# hub 10.8.3.3
HubMC(config-domain-vrf-mc)# exit
```

Configure IP prefix-lists

```
HubMC(config)# ip prefix-list DC2_PREFIX seq 10 permit 10.9.0.0/16
HubMC(config)# ip prefix-list DC2_PREFIX seq 20 permit 10.8.0.0/16
HubMC(config)# ip prefix-list ENTERPRISE_PREFIX seq 10 permit 10.0.0.0/8
```

Configure hub border routers on DC2 (R94)

```
BR94> enable
BR94# configure terminal
BR94(config)# interface Loopback0
BR94(config-if)# ip address 10.9.4.4 255.255.255.255
BR94(config-if)# exit
```

Configure the device as border router (BR94)

```
BR94(config)# domain default
BR94(config-domain)# vrf default
BR94(config-domain-vrf)# border
BR94(config-domain-vrf-br)# source-interface Loopback0
```

```
BR94(config-domain-vrf-br)# master 10.9.3.3
BR94(config-domain-vrf-br)# exit
```

Configure tunnel from BR94 to DMVPN1 (MPLS)Link

```
BR94(config)# interface Tunnel100
BR94(config-if)# bandwidth 1000
BR94(config-if)# ip address 10.0.100.94 255.255.255.0
BR94(config-if)# no ip redirects
BR94(config-if)# ip mtu 1400
BR94(config-if)# ip nhrp authentication cisco
BR94(config-if)# ip nhrp map multicast dynamic
BR94(config-if)# ip nhrp network-id 1
BR94(config-if)# ip nhrp holdtime 60
BR94(config-if)# ip nhrp redirect
BR94(config-if)# ip tcp adjust-mss 1360
BR94(config-if)# load-interval 30
BR94(config-if)# delay 1000
BR94(config-if)# tunnel source Ethernet0/1
BR94(config-if)# tunnel mode gre multipoint
BR94(config-if)# tunnel key 100
BR94(config-if)# tunnel vrf IWAN-TRANSPORT-1
BR94(config-if)# domain path MPLS path-id 30
```

Configure hub border routers on DC2 (R95)

```
BR95> enable
BR95# configure terminal
BR95(config)# interface Loopback0
BR95(config-if)# ip address 10.9.5.5 255.255.255.255
BR95(config-if)# exit
```

Configure the device as border router (BR95)

```
BR95(config)# domain default
BR95(config-domain)# vrf default
BR95(config-domain-vrf)# border
BR95(config-domain-vrf-br)# source-interface Loopback0
BR95(config-domain-vrf-br)# master 10.9.3.3
BR95(config-domain-vrf-br)# exit
```

Configure tunnel from BR95 to DMVPN2 (INET)Link

```
BR95(config)# interface Tunnel200
BR95(config-if)# bandwidth 1000
BR95(config-if)# ip address 10.0.200.95 255.255.255.0
BR95(config-if)# no ip redirects
BR95(config-if)# ip mtu 1400
BR95(config-if)# ip nhrp authentication cisco
BR95(config-if)# ip nhrp map multicast dynamic
BR95(config-if)# ip nhrp network-id 2
BR95(config-if)# ip nhrp holdtime 60
BR95(config-if)# ip nhrp redirect
BR95(config-if)# ip tcp adjust-mss 1360
BR95(config-if)# load-interval 30
BR95(config-if)# delay 1000
BR95(config-if)# tunnel source Ethernet0/1
BR95(config-if)# tunnel mode gre multipoint
BR95(config-if)# tunnel key 200
BR95(config-if)# tunnel vrf IWAN-TRANSPORT-2
BR95(config-if)# domain path INET path-id 40
```

Example: Configuring Branch Routers**Configure the interfaces (R10)**

```
R10> enable
R10# configure terminal
R10(config)# interface Loopback0
R10(config-if)# ip address 10.2.10.10 255.255.255.255
R10(config-if)# exit
```

Configure the device as branch-master controller (R10)

```
R10(config)# domain default
R10(config-domain)# vrf default
R10(config-domain-vrf)# border
R10(config-domain-vrf-br)# source-interface Loopback0
R10(config-domain-vrf-br)# master local
R10(config-domain-vrf-br)# exit
R10(config-domain-vrf)# master branch
R10(config-domain-vrf-mc)# source-interface Loopback0
R10(config-domain-vrf-mc)# hub 10.8.3.3
```

Configure the tunnel interface and tunnel path from R10

```
R10(config)# interface Tunnel100
R10(config-if)# bandwidth 400
R10(config-if)# ip address 10.0.100.10 255.255.255.0
R10(config-if)# no ip redirects
R10(config-if)# ip mtu 1400
R10(config-if)# ip nhrp authentication cisco
R10(config-if)# ip nhrp map multicast dynamic
R10(config-if)# ip nhrp network-id 1
R10(config-if)# ip nhrp holdtime 60
R10(config-if)# ip nhrp nhs 10.0.100.84 nbma 172.16.84.4 multicast
R10(config-if)# ip nhrp nhs 10.0.100.94 nbma 172.16.94.4 multicast
R10(config-if)# ip nhrp registration no-unique
R10(config-if)# ip nhrp registration timeout 60
R10(config-if)# ip nhrp shortcut
R10(config-if)# ip nhrp redirect
R10(config-if)# ip tcp adjust-mss 1360
R10(config-if)# load-interval 30
R10(config-if)# delay 1000
R10(config-if)# no nhrp route-watch
R10(config-if)# if-state nhrp
R10(config-if)# tunnel source Ethernet0/1
R10(config-if)# tunnel mode gre multipoint
R10(config-if)# tunnel key 100
R10(config-if)# tunnel vrf IWAN-TRANSPORT-1

R10(config)# interface Tunnel200
R10(config-if)# bandwidth 5000
R10(config-if)# ip address 10.0.200.10 255.255.255.0
R10(config-if)# no ip redirects
R10(config-if)# ip mtu 1400
R10(config-if)# ip nhrp authentication cisco
R10(config-if)# ip nhrp map multicast dynamic
R10(config-if)# ip nhrp network-id 2
R10(config-if)# ip nhrp holdtime 600
R10(config-if)# ip nhrp nhs 10.0.200.85 nbma 172.16.85.5 multicast
R10(config-if)# ip nhrp nhs 10.0.200.95 nbma 172.16.95.5 multicast
R10(config-if)# ip nhrp registration no-unique
R10(config-if)# ip nhrp registration timeout 60
```

```

R10(config-if)# ip nhrp shortcut
R10(config-if)# ip nhrp redirect
R10(config-if)# ip tcp adjust-mss 1360
R10(config-if)# load-interval 30
R10(config-if)# delay 1000
R10(config-if)# no nhrp route-watch
R10(config-if)# if-state nhrp
R10(config-if)# tunnel source Ethernet0/2
R10(config-if)# tunnel mode gre multipoint
R10(config-if)# tunnel key 200
R10(config-if)# tunnel vrf IWAN-TRANSPORT-2

```

Configure the interfaces (R11)

```

R11> enable
R11# configure terminal
R11(config)# interface Loopback0
R11(config-if)# ip address 10.2.11.11 255.255.255.255
R11(config-if)# exit

```

Configure the device as branch master controller (R11)

```

R11(config)# domain default
R11(config-domain)# vrf default
R11(config-domain-vrf)# border
R11(config-domain-vrf-br)# source-interface Loopback0
R11(config-domain-vrf-br)# master local
R11(config-domain-vrf-br)# exit
R11(config-domain-vrf)# master branch
R11(config-domain-vrf-mc)# source-interface Loopback0
R11(config-domain-vrf-mc)# hub 10.8.3.3

```

Configure the tunnel interface and tunnel path from R11

```

R11(config)# interface Tunnel100
R11(config-if)# bandwidth 2000
R11(config-if)# ip address 10.0.100.11 255.255.255.0
R11(config-if)# no ip redirects
R11(config-if)# ip mtu 1400
R11(config-if)# ip nhrp authentication cisco
R11(config-if)# ip nhrp map multicast dynamic
R11(config-if)# ip nhrp network-id 1
R11(config-if)# ip nhrp holdtime 60
R11(config-if)# ip nhrp nhs 10.0.100.84 nbma 172.16.84.4 multicast
R11(config-if)# ip nhrp nhs 10.0.100.94 nbma 172.16.94.4 multicast
R11(config-if)# ip nhrp registration no-unique
R11(config-if)# ip nhrp registration timeout 60
R11(config-if)# ip nhrp shortcut
R11(config-if)# ip nhrp redirect
R11(config-if)# ip tcp adjust-mss 1360
R11(config-if)# load-interval 30
R11(config-if)# delay 1000
R11(config-if)# no nhrp route-watch
R11(config-if)# if-state nhrp
R11(config-if)# tunnel source Ethernet0/1
R11(config-if)# tunnel mode gre multipoint
R11(config-if)# tunnel key 100
R11(config-if)# tunnel vrf IWAN-TRANSPORT-1

R11(config)# interface Tunnel200
R11(config-if)# bandwidth 5000
R11(config-if)# ip address 10.0.200.11 255.255.255.0
R11(config-if)# no ip redirects
R11(config-if)# ip mtu 1400

```

```

R11(config-if)# ip nhrp authentication cisco
R11(config-if)# ip nhrp map multicast dynamic
R11(config-if)# ip nhrp network-id 2
R11(config-if)# ip nhrp holdtime 600
R11(config-if)# ip nhrp nhs 10.0.200.85 nbma 172.16.85.5 multicast
R11(config-if)# ip nhrp nhs 10.0.200.95 nbma 172.16.95.5 multicast
R11(config-if)# ip nhrp registration no-unique
R11(config-if)# ip nhrp registration timeout 60
R11(config-if)# ip nhrp shortcut
R11(config-if)# ip nhrp redirect
R11(config-if)# ip tcp adjust-mss 1360
R11(config-if)# load-interval 30
R11(config-if)# delay 1000
R11(config-if)# no nhrp route-watch
R11(config-if)# if-state nhrp
R11(config-if)# tunnel source Ethernet0/2
R11(config-if)# tunnel mode gre multipoint
R11(config-if)# tunnel key 200
R11(config-if)# tunnel vrf IWAN-TRANSPORT-2

```

Configure the interfaces (R12)

```

R12> enable
R12# configure terminal
R12(config)# interface Loopback0
R12(config-if)# ip address 10.2.12.12 255.255.255.255
R12(config-if)# exit

```

Configure the device as branch-master controller (R12)

```

R12(config)# domain default
R12(config-domain)# vrf default
R12(config-domain-vrf)# border
R12(config-domain-vrf-br)# source-interface Loopback0
R12(config-domain-vrf-br)# master local
R12(config-domain-vrf-br)# exit
R12(config-domain-vrf)# master branch
R12(config-domain-vrf-mc)# source-interface Loopback0
R12(config-domain-vrf-mc)# hub 10.8.3.3

```

Configure the tunnel interface and tunnel path from R12

```

R12(config)# interface Tunnel100
R12(config-if)# bandwidth 400
R12(config-if)# ip address 10.0.100.12 255.255.255.0
R12(config-if)# no ip redirects
R12(config-if)# ip mtu 1400
R12(config-if)# ip nhrp authentication cisco
R12(config-if)# ip nhrp map multicast dynamic
R12(config-if)# ip nhrp network-id 1
R12(config-if)# ip nhrp holdtime 600
R12(config-if)# ip nhrp nhs 10.0.100.84 nbma 172.16.84.4 multicast
R12(config-if)# ip nhrp nhs 10.0.100.94 nbma 172.16.94.4 multicast
R12(config-if)# ip nhrp registration no-unique
R12(config-if)# ip nhrp registration timeout 60
R12(config-if)# ip nhrp shortcut
R12(config-if)# ip tcp adjust-mss 1360
R12(config-if)# load-interval 30
R12(config-if)# delay 1000
R12(config-if)# no nhrp route-watch
R12(config-if)# if-state nhrp
R12(config-if)# tunnel source Ethernet0/1
R12(config-if)# tunnel mode gre multipoint

```

```
R12(config-if)# tunnel key 100
R12(config-if)# tunnel vrf IWAN-TRANSPORT-1
```

Configure the interfaces (R13)

```
R13> enable
R13# configure terminal
R13(config)# interface Loopback0
R13(config-if)# ip address 10.2.13.13 255.255.255.255
R13(config-if)# exit
```

Configure the device as a border router with R12 as the master controller (R13)

```
R13(config)# domain default
R13(config-domain)# vrf default
R13(config-domain-vrf)# border
R13(config-domain-vrf-br)# source-interface Loopback0
R13(config-domain-vrf-br)# master 10.2.12.12
R13(config-domain-vrf-br)# exit
```

Configure the tunnel interface and tunnel path from R13

```
R13(config)# interface Tunnel200
R13(config-if)# bandwidth 400
R13(config-if)# ip address 10.0.200.13 255.255.255.0
R13(config-if)# no ip redirects
R13(config-if)# ip mtu 1400
R13(config-if)# ip nhrp authentication cisco
R13(config-if)# ip nhrp network-id 2
R13(config-if)# ip nhrp holdtime 600
R13(config-if)# ip nhrp nhs 10.0.200.85 nbma 172.16.85.5 multicast
R13(config-if)# ip nhrp nhs 10.0.100.95 nbma 172.16.95.5 multicast
R13(config-if)# ip nhrp registration no-unique
R13(config-if)# ip nhrp registration timeout 60
R13(config-if)# ip nhrp shortcut
R13(config-if)# ip tcp adjust-mss 1360
R13(config-if)# load-interval 30
R13(config-if)# delay 1000
R13(config-if)# if-state nhrp
R13(config-if)# tunnel source Ethernet0/2
R13(config-if)# tunnel mode gre multipoint
R13(config-if)# tunnel key 200
R13(config-if)# tunnel vrf IWAN-TRANSPORT-2
```

Verifying PfRv3 Transit Site Configuration

To verify the PfRv3 transit site configuration, use the following show commands in any order:

```
HubMC2# show domain default master status
```

```
-----
*** Domain MC Status ***
```

```
Master VRF: Global
```

```
Instance Type:   Transit
POP ID:         2
Instance id:    0
Operational status: Up
Configured status: Up
Loopback IP Address: 10.9.3.3
Load Balancing:
Operational Status: Up
Max Calculated Utilization Variance: 0%
```

Example: Configuring Transit Site Support

```

Last load balance attempt: 03:07:30 ago
Last Reason: Variance less than 20%
Total unbalanced bandwidth:
    External links: 0 Kbps  Internet links: 0 Kbps
Route Control: Enabled
Mitigation mode Aggressive: Disabled
Policy threshold variance: 20
Minimum Mask Length: 28
Minimum Requirement: Met

Borders:
  IP address: 10.9.5.5
  Version: 2
  Connection status: CONNECTED (Last Updated 03:25:38 ago )
  Interfaces configured:
Name: Tunnel200 | type: external | Service Provider: INET path-id:40 | Status: UP | Zero-SLA:
NO
    Number of default Channels: 0

Tunnel if: Tunnel0

IP address: 10.9.4.4
Version: 2
Connection status: CONNECTED (Last Updated 03:25:37 ago )
Interfaces configured:
  Name: Tunnel100 | type: external | Service Provider: MPLS path-id:30 | Status: DOWN
Tunnel if: Tunnel0

```

```

-----
HubMC2# show domain default master channels

```

```

-----
Channel Id: 8  Dst Site-Id: 10.2.11.11  Link Name: MPLS  DSCP: default [0] pfr-label: 0:0
| 2:30 [0x21E] TCs: 0
Channel Created: 03:19:14 ago
Provisional State: Initiated and open
Operational state: Available but unreachable
Channel to hub: FALSE
Interface Id: 11
Supports Zero-SLA: Yes
Muted by Zero-SLA: No
Estimated Channel Egress Bandwidth: 0 Kbps
Immitigable Events Summary:
  Total Performance Count: 0, Total BW Count: 0
ODE Stats Bucket Number: 1
  Last Updated   : 00:00:21 ago
  Packet Count   : 0
  Byte Count     : 0
  One Way Delay  : N/A
  Loss Rate Pkts : N/A
  Loss Rate Bytes: N/A
  Jitter Mean    : N/A
  Unreachable    : TRUE
ODE Stats Bucket Number: 2
  Last Updated   : 00:00:52 ago
  Packet Count   : 0
  Byte Count     : 0
  One Way Delay  : N/A
  Loss Rate Pkts : N/A
  Loss Rate Bytes: N/A
  Jitter Mean    : N/A
  Unreachable    : TRUE

```



```
TCA Statistics:
  Received:355 ; Processed:354 ; Unreach_rcvd:355
Latest TCA Bucket
Last Updated : 00:00:21 ago
Local unreachable TCA received(Check for stale TCA 00:00:09 later)
```

```
-----
HubMC2# show domain default master site-capability device-capb path-id
```

```
-----
Site pop id : 1
Site mc type : Transit
Border Address : 10.9.4.4
Service provider: MPLS path-id: 30 if_index: 11
Border Address : 10.9.5.5
Service provider: INET path-id: 40 if_index: 11
-----
```

```
HubMC2# show domain default master site-prefix
```

```
-----
Load for five secs: 0%/0%; one minute: 0%; five minutes: 0%
Time source is NTP, 11:28:29.421 CET Tue Mar 17 2015
```

```
Change will be published between 5-60 seconds
Next Publish 00:33:03 later
Prefix DB Origin: 10.9.3.3
Prefix Flag: S-From SAF; L-Learned; T-Top Level; C-Configured; M-shared
```

Site-id	Site-prefix	Last Updated	DC Bitmap	Flag
10.2.10.10	10.1.10.0/24	01:25:15 ago	0x0	S
10.2.11.11	10.1.11.0/24	01:25:19 ago	0x0	S
10.2.10.10	10.2.10.10/32	01:25:15 ago	0x0	S
10.2.11.11	10.2.11.11/32	01:25:19 ago	0x0	S
10.2.12.12	10.2.12.12/32	01:28:54 ago	0x0	S
10.8.3.3	10.8.3.3/32	01:28:47 ago	0x1	S
10.9.3.3	10.8.0.0/16	01:28:47 ago	0x5	C,M
10.8.3.3	10.8.0.0/16	01:28:47 ago	0x5	C,M
10.9.3.3	10.9.3.3/32	03:29:04 ago	0x4	L
10.9.3.3	10.9.0.0/16	01:28:47 ago	0x5	C,M
10.8.3.3	10.9.0.0/16	01:28:47 ago	0x5	C,M
255.255.255.255	*10.0.0.0/8	01:28:47 ago	0x1	S,T

```
-----
HubMC2# show domain default master policy
```

```
-----
Load for five secs: 0%/0%; one minute: 0%; five minutes: 0%
Time source is NTP, 11:31:10.977 CET Tue Mar 17 2015
```

```
class VOICE sequence 10
  path-preference MPLS fallback INET
  class type: Dscp Based
  match dscp ef policy custom
  priority 2 packet-loss-rate threshold 5.0 percent
```

Example: Configuring Transit Site Support

```

        priority 1 one-way-delay threshold 150 msec
        priority 2 byte-loss-rate threshold 5.0 percent

class VIDEO sequence 20
  path-preference MPLS fallback INET
  class type: Dscp Based
  match dscp af41 policy custom
    priority 2 packet-loss-rate threshold 5.0 percent
    priority 1 one-way-delay threshold 150 msec
    priority 2 byte-loss-rate threshold 5.0 percent
  match dscp cs4 policy custom
    priority 2 packet-loss-rate threshold 5.0 percent
    priority 1 one-way-delay threshold 150 msec
    priority 2 byte-loss-rate threshold 5.0 percent

class CRITICAL sequence 30
  path-preference MPLS fallback INET
  class type: Dscp Based
  match dscp af31 policy custom
    priority 2 packet-loss-rate threshold 10.0 percent
    priority 1 one-way-delay threshold 600 msec
    priority 2 byte-loss-rate threshold 10.0 percent
  Number of Traffic classes using this policy: 1

class DEFAULT0 sequence 100
  class type: Dscp Based
  match dscp default policy custom
    priority 2 packet-loss-rate threshold 5.0 percent
    priority 1 one-way-delay threshold 50 msec
    priority 3 jitter threshold 200000 usec
    priority 2 byte-loss-rate threshold 5.0 percent
  Number of Traffic classes using this policy: 1

class default
  match dscp all

```

```
-----
HubMC2# show domain default master discovered

```

```
-----
Load for five secs: 0%/0%; one minute: 0%; five minutes: 0%
Time source is NTP, 14:31:58.410 CET Tue Mar 17 2015

```

```
*** Domain MC DISCOVERED sites ***
```

```
Number of sites: 5
*Traffic classes [Performance based][Load-balance based]
```

```
Site ID: 255.255.255.255
Site Discovered:06:32:33 ago
Off-limits: Disabled
DSCP :default[0]-Number of traffic classes[0][0]
DSCP :af31[26]-Number of traffic classes[0][0]
```

```
Site ID: 10.8.3.3
Site Discovered:06:30:37 ago
Off-limits: Disabled
DSCP :default[0]-Number of traffic classes[0][0]
DSCP :af31[26]-Number of traffic classes[0][0]
```

```
Site ID: 10.2.10.10
Site Discovered:06:30:37 ago
Off-limits: Disabled
```

```
DSCP :default[0]-Number of traffic classes[1][0]
DSCP :af31[26]-Number of traffic classes[1][0]
```

```
Site ID: 10.2.11.11
Site Discovered:06:30:34 ago
Off-limits: Disabled
DSCP :default[0]-Number of traffic classes[0][0]
DSCP :af31[26]-Number of traffic classes[0][0]
```

```
Site ID: 10.2.12.12
Site Discovered:06:30:37 ago
Off-limits: Disabled
DSCP :default[0]-Number of traffic classes[0][0]
DSCP :af31[26]-Number of traffic classes[0][0]
```

BR94# **show domain default border status**

**** Border Status ****

```
Instance Status: UP
Present status last updated: 06:39:21 ago
Loopback: Configured Loopback0 UP (10.9.4.4)
Master: 10.9.3.3
Master version: 2
Connection Status with Master: UP
MC connection info: CONNECTION SUCCESSFUL
Connected for: 06:39:15
Route-Control: Enabled
Asymmetric Routing: Disabled
Minimum Mask length: 28
Sampling: off
Minimum Requirement: Met
External Wan interfaces:
    Name: Tunnel100 Interface Index: 11 SNMP Index: 8 SP: MPLS path-id: 30 Status: DOWN
Zero-SLA: NO
```

Auto Tunnel information:

```
Name:Tunnel0 if_index: 12
Borders reachable via this tunnel: 10.9.5.5
```

BR94# **show domain default border site-prefix**

Prefix Flag: S-From SAF; L-Learned; T-Top Level; C-Configured; M-shared

Site-id	Site-prefix	Last Updated	DC Bitmap	Flag
10.2.10.10	10.1.10.0/24	00:36:58 ago	0x0	S
10.2.11.11	10.1.11.0/24	00:37:02 ago	0x0	S
10.2.10.10	10.2.10.10/32	00:36:58 ago	0x0	S
10.2.11.11	10.2.11.11/32	00:37:02 ago	0x0	S
10.2.12.12	10.2.12.12/32	00:40:37 ago	0x0	S
10.8.3.3	10.8.3.3/32	00:40:29 ago	0x1	S
10.9.3.3	10.8.0.0/16	00:38:40 ago	0x5	S,C,M
10.8.3.3	10.8.0.0/16	00:38:40 ago	0x5	S,C,M
10.9.3.3	10.9.3.3/32	00:38:40 ago	0x4	S
10.9.3.3	10.9.0.0/16	00:38:40 ago	0x5	S,C,M
10.8.3.3	10.9.0.0/16	00:38:40 ago	0x5	S,C,M

```
255.255.255.255      *10.0.0.0/8      00:40:29 ago      0x1      S,T
```

```
R10# show domain default master channels dst-site-id 10.8.3.3
```

```
Legend: * (Value obtained from Network delay:)
```

```
Channel Id: 27 Dst Site-Id: 10.8.3.3 Link Name: INET DSCP: default [0] pfr-label: 0:20
| 0:0 [0x140000] TCs: 0
Channel Created: 01:16:34 ago
Provisional State: Initiated and open
Operational state: Available
Channel to hub: TRUE
Interface Id: 12
Supports Zero-SLA: Yes
Muted by Zero-SLA: No
Estimated Channel Egress Bandwidth: 5 Kbps
Immitigable Events Summary:
  Total Performance Count: 0, Total BW Count: 0
Site Prefix List
  10.8.3.3/32 (Active)
  10.8.0.0/16 (Active)
  10.9.0.0/16 (Standby)
ODE Stats Bucket Number: 1
  Last Updated : 00:00:24 ago
  Packet Count : 562
Byte Count : 47208
  One Way Delay : 71 msec*
  Loss Rate Pkts: 0.0 %
  Loss Rate Byte: 0.0 %
  Jitter Mean : 619 usec
  Unreachable : FALSE
ODE Stats Bucket Number: 2
  Last Updated : 00:00:54 ago
  Packet Count : 558
  Byte Count : 46872
  One Way Delay : 55 msec*
  Loss Rate Pkts: 0.0 %
  Loss Rate Byte: 0.0 %
  Jitter Mean : 556 usec
  Unreachable : FALSE
TCA Statistics:
  Received:133 ; Processed:133 ; Unreach_rcvd:0
Latest TCA Bucket
  Last Updated : 00:00:24 ago
  One Way Delay : 71 msec*
  Loss Rate Pkts: NA
  Loss Rate Byte: NA
  Jitter Mean : NA
  Unreachability: FALSE
.
.
.
```

```
R10# show domain default border status
```

```
Tue Mar 24 04:52:50.379
```

```
**** Border Status ****
```

```
Instance Status: UP
Present status last updated: 3d14h ago
Loopback: Configured Loopback0 UP (10.2.10.10)
Master: 10.2.10.10
Master version: 2
Connection Status with Master: UP
MC connection info: CONNECTION SUCCESSFUL
Connected for: 3d14h
Route-Control: Enabled
Asymmetric Routing: Disabled
Minimum Mask length: 28
Sampling: off
Minimum Requirement: Met
External Wan interfaces:
Name: Tunnel100 Interface Index: 14 SNMP Index: 8 SP: MPLS Status: UP Zero-SLA: NO Path-id
List: 0:10, 1:30
Name: Tunnel200 Interface Index: 15 SNMP Index: 9 SP: INET Status: UP Zero-SLA: NO Path-id
List: 0:20, 1:40

Auto Tunnel information:

Name:Tunnel0 if_index: 13
Borders reachable via this tunnel:
```

```
-----
R10# show domain default master status
```

```
-----
*** Domain MC Status ***

Master VRF: Global

Instance Type: Branch
Instance id: 0
Operational status: Up
Configured status: Up
Loopback IP Address: 10.2.10.10
Load Balancing:
Operational Status: Up
Max Calculated Utilization Variance: 1%
Last load balance attempt: never
Last Reason: Variance less than 20%
Total unbalanced bandwidth:
External links: 0 Kbps Internet links: 0 Kbps
Route Control: Enabled
Mitigation mode Aggressive: Disabled
Policy threshold variance: 20
Minimum Mask Length: 28
Minimum Requirement: Met

Borders:
IP address: 10.2.10.10
Version: 2
Connection status: CONNECTED (Last Updated 3d14h ago )
Interfaces configured:
Name: Tunnel100 | type: external | Service Provider: MPLS | Status: UP | Zero-SLA: NO
Number of default Channels: 0

Path-id list: 0:10 1:30

Name: Tunnel200 | type: external | Service Provider: INET | Status: UP | Zero-SLA: NO
Number of default Channels: 0
```

Example: Configuring Transit Site Support

```
Path-id list: 0:20 1:40
```

```
Tunnel if: Tunnel0
```

```
-----
R10# show domain default master site-capability 10.9.3.3 path-id
```

```
-----
Site id : 10.9.3.3
Site pop id : 1
Site mc type : Transit
Border Address : 10.9.4.4
Service provider: MPLS path-id: 30 if_index: 11
Border Address : 10.9.5.5
Service provider: INET path-id: 40 if_index: 11
-----
```

```
R10# show domain default master site-capability 10.8.3.3 path-id
```

```
-----
Site id : 10.8.3.3
Site pop id : 0
Site mc type : Hub
Border Address : 10.8.5.5
Service provider: INET path-id: 20 if_index: 11
Border Address : 10.8.4.4
Service provider: MPLS path-id: 10 if_index: 11
-----
```

```
R10# show domain default border channels service-provider INET
```

```
-----
Tue Mar 24 04:53:39.968
```

```
Border Smart Probe Stats:
```

```
Smart probe parameters:
Source address used in the Probe: 10.2.10.10
Unreach time: 1000 ms
Probe source port: 18000
Probe destination port: 19000
Interface Discovery: ON
Probe freq for channels with traffic :10 secs
Discovery Probes: OFF
Number of transit probes consumed :0
Number of transit probes re-routed: 0
DSCP's using this: [0] [1] [2] [3] [4] [5] [6] [7] [8] [9] [10] [11] [12] [13] [14] [15]
[16] [17] [18] [19] [20] [21] [22] [23] [24] [25] [26] [27] [28] [29] [30] [31] [32] [33]
[34] [35] [36] [37] [38] [39] [40] [41] [42] [43] [44] [45] [46] [47] [48] [49] [50] [51]
[52] [53] [54] [55] [56] [57] [58] [59] [60] [61] [62] [63] [64]
All the other DSCPs use the default interval: 10 secs
```

```
Channel id: 6
Channel create time: 3d14h ago
Site id : 10.8.3.3
DSCP : default[0]
Service provider : INET
Pfr-Label : 0:20 | 0:0 [0x140000]
```

```
exit path-id: 0
Exit path-id sent on wire: 0
Number of Probes sent : 5657983
Number of Probes received : 5823008
Last Probe sent : 00:00:00 ago
Last Probe received : 00:00:00 ago
Channel state : Discovered and open
Channel next_hop : 10.0.200.85
RX Reachability : Reachable
TX Reachability : Reachable
Channel is sampling 0 flows
Channel remote end point: 10.0.200.85
Channel to hub: TRUE
Version: 3
Supports Zero-SLA: Yes
Muted by Zero-SLA: No
Probe freq with traffic : 1 in 10000 ms
.
.
.
```

```
-----
R10# show ip nhrp nhs
-----
```

Legend: E=Expecting replies, R=Responding, W=Waiting

Tunnel100:

```
10.0.100.84 RE NBMA Address: 172.16.84.4 priority = 0 cluster = 0
10.0.100.94 RE NBMA Address: 172.16.94.4 priority = 0 cluster = 0
```

Tunnel200:

```
10.0.200.85 RE NBMA Address: 172.16.85.5 priority = 0 cluster = 0
10.0.200.95 RE NBMA Address: 172.16.95.5 priority = 0 cluster = 0
-----
```

