



# MPLS Traffic Engineering (TE)--Automatic Bandwidth Adjustment for TE Tunnels

---

**Last Updated: November 28, 2011**

The MPLS Traffic Engineering (TE)--Automatic Bandwidth Adjustment for TE Tunnels feature provides the means to automatically adjust the bandwidth allocation for traffic engineering tunnels based on their measured traffic load. The configured bandwidth in the running configuration is changed due to the automatic bandwidth behavior.

- [Finding Feature Information, page 1](#)
- [Prerequisites for MPLS TE--Automatic Bandwidth Adjustment for TE Tunnels, page 1](#)
- [Restrictions for MPLS TE--Automatic Bandwidth Adjustment for TE Tunnels, page 2](#)
- [Information About MPLS TE--Automatic Bandwidth Adjustment for TE Tunnels, page 2](#)
- [How to Configure MPLS TE--Automatic Bandwidth Adjustment for TE Tunnels, page 3](#)
- [Configuration Examples for MPLS TE--Automatic Bandwidth Adjustments for TE Tunnels, page 17](#)
- [Additional References, page 18](#)
- [Feature Information for MPLS TE--Automatic Bandwidth Adjustment for TE Tunnels, page 19](#)

## Finding Feature Information

Your software release may not support all the features documented in this module. For the latest feature information and caveats, see the release notes for your platform and software release. To find information about the features documented in this module, and to see a list of the releases in which each feature is supported, see the Feature Information Table at the end of this document.

Use Cisco Feature Navigator to find information about platform support and Cisco software image support. To access Cisco Feature Navigator, go to [www.cisco.com/go/cfn](http://www.cisco.com/go/cfn). An account on Cisco.com is not required.

## Prerequisites for MPLS TE--Automatic Bandwidth Adjustment for TE Tunnels

Your network must support the following:



---

**Americas Headquarters:**  
Cisco Systems, Inc., 170 West Tasman Drive, San Jose, CA 95134-1706 USA

- Multiprotocol Label Switching (MPLS) traffic engineering (TE) tunnels
- Cisco Express Forwarding
- Intermediate System-to-Intermediate System (IS-IS) or Open Shortest Path First (OSPF)

MPLS TE must be configured on the interface and on the tunnels.

## Restrictions for MPLS TE--Automatic Bandwidth Adjustment for TE Tunnels

- The automatic bandwidth adjustment feature treats each tunnel for which it has been enabled independently. That is, it adjusts the bandwidth for each such tunnel according to the adjustment frequency configured for the tunnel and the sampled output rate for the tunnel since the last adjustment without regard for any adjustments previously made or pending for other tunnels.
- If a tunnel is brought down to calculate a new label switched path (LSP) because the LSP is not operational, the configured bandwidth is not saved. If the router is reloaded, the last saved automatic bandwidth value is used.
- You cannot configure MPLS TE over the logical generic routing encapsulation (GRE) tunnel interface.
- MPLS traffic engineering supports only a single IGP process/instance. Multiple IGP processes/instances are not supported and MPLS traffic engineering should not be configured in more than one IGP process/instance.

## Information About MPLS TE--Automatic Bandwidth Adjustment for TE Tunnels

- [MPLS TE--Automatic Bandwidth Adjustment for TE Tunnels Overview, page 2](#)
- [MPLS TE--Automatic Bandwidth Adjustment for TE Tunnels Benefits, page 2](#)

## MPLS TE--Automatic Bandwidth Adjustment for TE Tunnels Overview

Traffic engineering autobandwidth samples the average output rate for each tunnel marked for automatic bandwidth adjustment. For each marked tunnel, the feature periodically (for example, once per day) adjusts the tunnel's allocated bandwidth to be the largest sample for the tunnel since the last adjustment.

The frequency with which tunnel bandwidth is adjusted and the allowable range of adjustments is configurable on a per-tunnel basis. In addition, the sampling interval and the interval over which to average tunnel traffic to obtain the average output rate is user-configurable on a per-tunnel basis.

## MPLS TE--Automatic Bandwidth Adjustment for TE Tunnels Benefits

The automatic bandwidth feature allows you to configure and monitor the bandwidth for MPLS TE tunnels. If automatic bandwidth is configured for a tunnel, TE automatically adjusts the tunnel's bandwidth.

# How to Configure MPLS TE--Automatic Bandwidth Adjustment for TE Tunnels

- [Configuring a Device to Support Traffic Engineering Tunnels, page 3](#)
- [Configuring IS-IS or OSPF for MPLS Traffic Engineering, page 4](#)
- [Configuring Bandwidth on Each Link That a Tunnel Crosses, page 7](#)
- [Configuring an MPLS Traffic Engineering Tunnel, page 8](#)
- [Enabling Automatic Bandwidth Adjustment on a Platform, page 11](#)
- [Enabling Automatic Bandwidth Adjustment for a Tunnel, page 12](#)
- [Configuring the Interval for Computing the Tunnel Average Output Rate, page 14](#)
- [Verifying Automatic Bandwidth Configuration, page 15](#)

## Configuring a Device to Support Traffic Engineering Tunnels

### SUMMARY STEPS

1. **enable**
2. **configure terminal**
3. **ip cef distributed**
4. **mpls traffic-eng tunnels**
5. **exit**

### DETAILED STEPS

	Command or Action	Purpose
Step 1	<b>enable</b>  <b>Example:</b> Router> enable	Enables privileged EXEC mode. <ul style="list-style-type: none"> <li>• Enter your password if prompted.</li> </ul>
Step 2	<b>configure terminal</b>  <b>Example:</b> Router# configure terminal	Enters global configuration mode.
Step 3	<b>ip cef distributed</b>  <b>Example:</b> Router(config)# ip cef distributed	Enables distributed Cisco Express Forwarding operation.

Command or Action	Purpose
<b>Step 4</b> <code>mpls traffic-eng tunnels</code>  <b>Example:</b> <pre>Router(config)# mpls traffic-eng tunnels</pre>	Enables the MPLS traffic engineering tunnel feature on a device.
<b>Step 5</b> <code>exit</code>  <b>Example:</b> <pre>Router(config)# exit</pre>	Exits to privileged EXEC mode.

## Configuring IS-IS or OSPF for MPLS Traffic Engineering

Perform one of the follow tasks to configure IS-IS or OSPF for MPLS TE:

- [Configuring IS-IS for MPLS Traffic Engineering, page 4](#)
- [Configuring OSPF for MPLS Traffic Engineering, page 5](#)

### Configuring IS-IS for MPLS Traffic Engineering

#### SUMMARY STEPS

1. `enable`
2. `configure terminal`
3. `router isis`
4. `mpls traffic-eng level-1`
5. `mpls traffic-eng router-id loopback0`
6. `metric-style wide`
7. `exit`
8. `exit`

#### DETAILED STEPS

Command or Action	Purpose
<b>Step 1</b> <code>enable</code>  <b>Example:</b> <pre>Router&gt; enable</pre>	Enables privileged EXEC mode. <ul style="list-style-type: none"> <li>• Enter your password if prompted.</li> </ul>

Command or Action	Purpose
<p><b>Step 2</b> <code>configure terminal</code></p> <p><b>Example:</b></p> <pre>Router# configure terminal</pre>	Enters global configuration mode.
<p><b>Step 3</b> <code>router isis</code></p> <p><b>Example:</b></p> <pre>Router(config)# router isis</pre>	Enables IS-IS routing and specifies an IS-IS process for IP, and enters router configuration mode.
<p><b>Step 4</b> <code>mpls traffic-eng level-1</code></p> <p><b>Example:</b></p> <pre>Router(config-router)# mpls traffic-eng level-1</pre>	Turns on MPLS TE for IS-IS level 1.
<p><b>Step 5</b> <code>mpls traffic-eng router-id loopback0</code></p> <p><b>Example:</b></p> <pre>Router(config-router)# mpls traffic-eng router-id loopback0</pre>	Specifies that the TE router identifier for the node is the IP address associated with interface loopback0.
<p><b>Step 6</b> <code>metric-style wide</code></p> <p><b>Example:</b></p> <pre>Router(config-router)# metric-style wide</pre>	Configures a router to generate and accept only new-style type, length, value objects (TLVs).
<p><b>Step 7</b> <code>exit</code></p> <p><b>Example:</b></p> <pre>Router(config-router)# exit</pre>	Exits to global configuration mode.
<p><b>Step 8</b> <code>exit</code></p> <p><b>Example:</b></p> <pre>Router(config)# exit</pre>	Exits to privileged EXEC mode.

## Configuring OSPF for MPLS Traffic Engineering

**SUMMARY STEPS**

1. **enable**
2. **configure terminal**
3. **router ospf** *process-id*
4. **mpls traffic-eng area** *number*
5. **mpls traffic-eng router-id** *loopback0*
6. **exit**
7. **exit**

**DETAILED STEPS**

Command or Action	Purpose
<b>Step 1</b> <b>enable</b>  <b>Example:</b> Router> enable	Enables privileged EXEC mode. <ul style="list-style-type: none"> <li>• Enter your password if prompted.</li> </ul>
<b>Step 2</b> <b>configure terminal</b>  <b>Example:</b> Router# configure terminal	Enters global configuration mode.
<b>Step 3</b> <b>router ospf</b> <i>process-id</i>  <b>Example:</b> Router(config)# router ospf 200	Configures an OSPF routing process for IP and enters router configuration mode. <ul style="list-style-type: none"> <li>• The value for the <i>process-id</i> argument is an internally used identification parameter for an OSPF routing process. It is locally assigned and can be any positive integer. Assign a unique value for each OSPF routing process.</li> </ul>
<b>Step 4</b> <b>mpls traffic-eng area</b> <i>number</i>  <b>Example:</b> Router(config-router)# mpls traffic-eng area 0	Turns on MPLS TE for the indicated OSPF area.
<b>Step 5</b> <b>mpls traffic-eng router-id</b> <i>loopback0</i>  <b>Example:</b> Router(config-router)# mpls traffic-eng router-id loopback0	Specifies that the TE router identifier for the node is the IP address associated with interface loopback0.

Command or Action	Purpose
<b>Step 6</b> <code>exit</code>  <b>Example:</b> <code>Router(config-router)# exit</code>	Exits to global configuration mode.
<b>Step 7</b> <code>exit</code>  <b>Example:</b> <code>Router(config)# exit</code>	Exits to privileged EXEC mode.

## Configuring Bandwidth on Each Link That a Tunnel Crosses

### SUMMARY STEPS

1. `enable`
2. `configure terminal`
3. `interface type number`
4. `mpls traffic-eng tunnels`
5. `ip rsvp bandwidth [interface-kbps] [single-flow-kbps] [sub-pool kbps]`
6. `exit`
7. `exit`

### DETAILED STEPS

Command or Action	Purpose
<b>Step 1</b> <code>enable</code>  <b>Example:</b> <code>Router&gt; enable</code>	Enables privileged EXEC mode. <ul style="list-style-type: none"> <li>• Enter your password if prompted.</li> </ul>
<b>Step 2</b> <code>configure terminal</code>  <b>Example:</b> <code>Router# configure terminal</code>	Enters global configuration mode.

Command or Action	Purpose
<b>Step 3</b> <code>interface type number</code>  <b>Example:</b> <pre>Router(config)# interface FastEthernet 0/0/0</pre>	Configures an interface type and enters interface configuration mode.
<b>Step 4</b> <code>mpls traffic-eng tunnels</code>  <b>Example:</b> <pre>Router(config-if)# mpls traffic-eng tunnels</pre>	Enables MPLS TE tunnels on an interface.
<b>Step 5</b> <code>ip rsvp bandwidth [interface-kbps] [single-flow-kbps] [sub-pool kbps]</code>  <b>Example:</b> <pre>Router(config-if)# ip rsvp bandwidth 1000 100</pre>	Enables Resource Reservation Protocol (RSVP) for IP on an interface. <ul style="list-style-type: none"> <li>• The <i>interface-kbps</i> argument specifies the maximum amount of bandwidth (in kbps) that may be allocated by RSVP flows. The range is from 1 to 10000000.</li> <li>• The <i>single-flow-kbps</i> argument is the maximum amount of bandwidth, in kbps, that may be allocated to a single flow. The range is from 1 to 10000000.</li> </ul>
<b>Step 6</b> <code>exit</code>  <b>Example:</b> <pre>Router(config-if)# exit</pre>	Exits to global configuration mode.
<b>Step 7</b> <code>exit</code>  <b>Example:</b> <pre>Router(config)# exit</pre>	Exits to privileged EXEC mode.

## Configuring an MPLS Traffic Engineering Tunnel

To configure an MPLS TE tunnel, perform the following task. The MPLS TE tunnel has two path setup options: a preferred explicit path and a backup dynamic path.



### Note

The configuration applies only to the TE head-end node. The configuration applies to all nodes and interfaces in the network.



**SUMMARY STEPS**

1. **enable**
2. **configure terminal**
3. **interface tunnel** *number*
4. **ip unnumbered** *interface-type interface-number*
5. **tunnel destination** *ip-address*
6. **tunnel mode mpls traffic-eng**
7. **tunnel mpls traffic-eng bandwidth** *bandwidth*
8. **tunnel mpls traffic-eng path-option** [**protect**] *preference-number*{**dynamic** | **explicit** | {**name path-name** | *path-number*}} [**lockdown**]
9. **exit**
10. **exit**

**DETAILED STEPS**

	<b>Command or Action</b>	<b>Purpose</b>
<b>Step 1</b>	<p><b>enable</b></p> <p><b>Example:</b></p> <pre>Router&gt; enable</pre>	<p>Enables privileged EXEC mode.</p> <ul style="list-style-type: none"> <li>• Enter your password if prompted.</li> </ul>
<b>Step 2</b>	<p><b>configure terminal</b></p> <p><b>Example:</b></p> <pre>Router# configure terminal</pre>	<p>Enters global configuration mode.</p>
<b>Step 3</b>	<p><b>interface tunnel</b> <i>number</i></p> <p><b>Example:</b></p> <pre>Router(config)# interface tunnel 1</pre>	<p>Configures a tunnel interface and enters interface configuration mode.</p>
<b>Step 4</b>	<p><b>ip unnumbered</b> <i>interface-type interface-number</i></p> <p><b>Example:</b></p> <pre>Router(config-if)# ip unnumbered loopback 0</pre>	<p>Gives the tunnel interface an IP address that is the same as that of interface Loopback0.</p> <ul style="list-style-type: none"> <li>• An MPLS TE tunnel interface should be unnumbered because it represents a unidirectional link.</li> </ul> <p><b>Note</b> This command is not effective until Loopback0 has been configured with an IP address.</p>

Command or Action	Purpose
<p><b>Step 5</b> <code>tunnel destination ip-address</code></p> <p><b>Example:</b></p> <pre>Router(config-if)# tunnel destination 10.3.3.3</pre>	<p>Specifies the destination for a tunnel.</p> <ul style="list-style-type: none"> <li>The destination must be the MPLS TE router ID of the destination device.</li> </ul>
<p><b>Step 6</b> <code>tunnel mode mpls traffic-eng</code></p> <p><b>Example:</b></p> <pre>Router(config-if)# tunnel mode mpls traffic-eng</pre>	<p>Sets the encapsulation mode of the tunnel to MPLS TE.</p>
<p><b>Step 7</b> <code>tunnel mpls traffic-eng bandwidth bandwidth</code></p> <p><b>Example:</b></p> <pre>Router(config-if)# tunnel mpls traffic- eng bandwidth 250</pre>	<p>Configures the bandwidth for the MPLS TE tunnel.</p> <ul style="list-style-type: none"> <li>The <i>bandwidth</i> argument is the bandwidth, in kilobits per second, set for the MPLS TE tunnel. The range is from 1 to 4294967295. The default is 0.</li> <li>If automatic bandwidth is configured for the tunnel, the <b>tunnel mpls traffic-eng bandwidth</b> command configures the initial tunnel bandwidth, which will be adjusted by the autobandwidth mechanism.</li> </ul> <p><b>Note</b> If you configure a tunnel's bandwidth with the <b>tunnel mpls traffic-eng bandwidth</b> command and the minimum amount of automatic bandwidth with the <b>tunnel mpls traffic-eng auto-bw</b> command, the minimum amount of automatic bandwidth adjustment is the lower of those two configured values.</p>
<p><b>Step 8</b> <code>tunnel mpls traffic-eng path-option [protect] preference-number{dynamic   explicit   {name path-name   path-number}} [lockdown]</code></p> <p><b>Example:</b></p> <pre>Router(config-if)# tunnel mpls traffic- eng path-option 10 explicit avoid- protected-link</pre>	<p>Configures the tunnel to use a named IP explicit path or a path dynamically calculated from the TE topology database.</p> <ul style="list-style-type: none"> <li>A dynamic path is used if an explicit path is currently unavailable.</li> </ul>
<p><b>Step 9</b> <code>exit</code></p> <p><b>Example:</b></p> <pre>Router(config-if)# exit</pre>	<p>Exits to global configuration mode.</p>

Command or Action	Purpose
<b>Step 10</b> <code>exit</code>  <b>Example:</b>  <code>Router(config)# exit</code>	Exits to privileged EXEC mode.

- [Troubleshooting Tips, page 11](#)

## Troubleshooting Tips

Each **tunnel mpls traffic-eng auto-bw** command supersedes the previous one. Therefore, if you want to specify multiple options for a tunnel, you must specify them all in a single **tunnel mpls traffic-eng auto-bw** command.

## Enabling Automatic Bandwidth Adjustment on a Platform

To enable automatic bandwidth adjustment on a platform and initiate sampling the output rate for tunnels configured for bandwidth adjustment, perform the following task.



### Note

This task is applicable only to the TE head-end router. The configuration applies to all locally-configured TE head-end interfaces.

### SUMMARY STEPS

1. **enable**
2. **configure terminal**
3. **mpls traffic-eng auto-bw timers [frequency seconds]**
4. **no mpls traffic-eng auto-bw timers**
5. **exit**

### DETAILED STEPS

Command or Action	Purpose
<b>Step 1</b> <code>enable</code>  <b>Example:</b>  <code>Router&gt; enable</code>	Enables privileged EXEC mode. <ul style="list-style-type: none"> <li>• Enter your password if prompted.</li> </ul>

Command or Action	Purpose
<p><b>Step 2</b> <code>configure terminal</code></p> <p><b>Example:</b></p> <pre>Router# configure terminal</pre>	Enters global configuration mode.
<p><b>Step 3</b> <code>mpls traffic-eng auto-bw timers [frequency seconds]</code></p> <p><b>Example:</b></p> <pre>Router(config)# mpls traffic-eng auto-bw timers frequency 300</pre>	<p>Enables automatic bandwidth adjustment on a platform and begins sampling the output rate for tunnels that have been configured for automatic bandwidth adjustment.</p> <ul style="list-style-type: none"> <li>The <b>frequency</b> keyword specifies the interval, in seconds, for sampling the output rate of each tunnel configured for automatic bandwidth. The range is 1 through 604800. The recommended value is 300.</li> </ul>
<p><b>Step 4</b> <code>no mpls traffic-eng auto-bw timers</code></p> <p><b>Example:</b></p> <pre>Router(config)# no mpls traffic-eng auto-bw timers</pre>	<p>(Optional) Disables automatic bandwidth adjustment on a platform.</p> <ul style="list-style-type: none"> <li>Use the <b>no</b> version of the command, which terminates output rate sampling and bandwidth adjustment for tunnels. In addition, the <b>no</b> form of the command restores the configured bandwidth for each tunnel where the configured bandwidth is determined as follows: <ul style="list-style-type: none"> <li>If the tunnel bandwidth was explicitly configured via the <b>tunnel mpls traffic-eng bandwidth</b> command after the running configuration was written to the startup configuration, the configured bandwidth is the bandwidth specified by that command.</li> <li>Otherwise, the configured bandwidth is the bandwidth specified for the tunnel in the startup configuration.</li> </ul> </li> </ul>
<p><b>Step 5</b> <code>exit</code></p> <p><b>Example:</b></p> <pre>Router(config)# exit</pre>	Exits to privileged EXEC mode.

## Enabling Automatic Bandwidth Adjustment for a Tunnel

### SUMMARY STEPS

- enable
- configure terminal
- interface *tunnel number*
- tunnel mpls traffic-eng auto-bw [collect-bw] [frequency *seconds* ] [adjustment-threshold *percent*] [overflow-limit *number* overflow-threshold *percent*] [max-bw *kpbs*] [min-bw *kpbs*]
- exit
- exit

## DETAILED STEPS

Command or Action	Purpose
<p><b>Step 1</b> <code>enable</code></p> <p><b>Example:</b></p> <pre>Router&gt; enable</pre>	<p>Enables privileged EXEC mode.</p> <ul style="list-style-type: none"> <li>• Enter your password if prompted.</li> </ul>
<p><b>Step 2</b> <code>configure terminal</code></p> <p><b>Example:</b></p> <pre>Router# configure terminal</pre>	<p>Enters global configuration mode.</p>
<p><b>Step 3</b> <code>interface tunnel <i>number</i></code></p> <p><b>Example:</b></p> <pre>Router(config)# interface tunnel 1</pre>	<p>Configures a tunnel interface and enters interface configuration mode.</p>
<p><b>Step 4</b> <code>tunnel mpls traffic-eng auto-bw [collect-bw] [frequency <i>seconds</i>] [adjustment-threshold <i>percent</i>] [overflow-limit <i>number</i> overflow-threshold <i>percent</i>] [max-bw <i>kbps</i>] [min-bw <i>kbps</i>]</code></p> <p><b>Example:</b></p> <pre>Router(config-if)# tunnel mpls traffic-eng auto-bw max-bw 2000 min-bw 1000</pre>	<p>Enables automatic bandwidth adjustment for the tunnel and controls the manner in which the bandwidth for a tunnel is adjusted.</p>
<p><b>Step 5</b> <code>exit</code></p> <p><b>Example:</b></p> <pre>Router(config-if)# exit</pre>	<p>Exits to global configuration mode.</p>
<p><b>Step 6</b> <code>exit</code></p> <p><b>Example:</b></p> <pre>Router(config)# exit</pre>	<p>Exits to privileged EXEC mode.</p>

## Configuring the Interval for Computing the Tunnel Average Output Rate

### SUMMARY STEPS

1. **enable**
2. **configure terminal**
3. **interface tunnel** *number*
4. **load-interval** *seconds*
5. **exit**
6. **exit**

### DETAILED STEPS

Command or Action	Purpose
<b>Step 1</b> <b>enable</b>  <b>Example:</b> Router> enable	Enables privileged EXEC mode. <ul style="list-style-type: none"> <li>• Enter your password if prompted.</li> </ul>
<b>Step 2</b> <b>configure terminal</b>  <b>Example:</b> Router# configure terminal	Enters global configuration mode.
<b>Step 3</b> <b>interface tunnel</b> <i>number</i>  <b>Example:</b> Router(config)# interface tunnel 1	Configures a tunnel interface and enters interface configuration mode.
<b>Step 4</b> <b>load-interval</b> <i>seconds</i>  <b>Example:</b> Router(config-if)# load-interval 90	Configures the interval over which the input and output rates for the interface are averaged. <ul style="list-style-type: none"> <li>• The <i>seconds</i> argument is the length of time for which data is used to compute load statistics. The value is a multiple of 30, from 30 to 600 (30, 60, 90, 120, and so on). The default is 300.</li> </ul>
<b>Step 5</b> <b>exit</b>  <b>Example:</b> Router(config-if)# exit	Exits to global configuration mode.

Command or Action	Purpose
<b>Step 6</b> <code>exit</code>  <b>Example:</b>  Router(config)# <code>exit</code>	Exits to privileged EXEC mode.

## Verifying Automatic Bandwidth Configuration

### SUMMARY STEPS

1. `show mpls traffic-eng tunnels`
2. `show running-config`

### DETAILED STEPS

#### Step 1

##### `show mpls traffic-eng tunnels`

Use this command to display information about tunnels, including automatic bandwidth information for tunnels that have the feature enabled. For example:

##### Example:

```
Router# show mpls traffic-eng tunnels
Name:tagsw4500-9_t1 (Tunnell) Destination:10.0.0.4
Status:
Admin:up Oper:up Path:valid Signalling:connected
path option 1, type explicit pbr_south (Basis for Setup, path weight 30)
path option 2, type dynamic
Config Parameters:
Bandwidth:13 kbps (Global) Priority:7 7 Affinity:0x0/0xFFFF
AutoRoute: disabled LockDown:disabled Loadshare:13 bw-based
auto-bw:(300/265) 53 Bandwidth Requested: 13
  Adjustment threshold: 5%
  Overflow Limit: 4 Overflow Threshold: 25%
  Overflow Threshold Crossed: 1
  Sample Missed: 1 Samples Collected: 1
Active Path Option Parameters:
  State: dynamic path option 1 is active
  BandwidthOverride: disabled LockDown: disabled Verbatim: disabled
  InLabel : -
  OutLabel : Serial3/0, 18
RSVP Signalling Info:
  Src 10.0.0.1, Dst 10.0.0.4, Tun_Id 2, Tun_Instance 2
RSVP Path Info:
  My Address: 10.105.0.1
  Explicit Route: 10.105.0.2 104.105.0.1 10.0.0.4
  Record Route: NONE
  Tspec: ave rate=13 kbits, burst=1000 bytes, peak rate=13 kbits
Record Route: NONE
  Tspec: ave rate=13 kbits, burst=1000 bytes, peak rate=13 kbits
RSVP Resv Info:
  Record Route: NONE
  Fspec: ave rate=13 kbits, burst=1000 bytes, peak rate=13 kbits
Shortest Unconstrained Path Info:
  Path Weight: 128 (TE)
  Explicit Route: 10.105.0.2 104.105.0.1 10.0.0.4
```

```

History:
Tunnel:
  Time since created: 7 minutes, 56 seconds
  Time since path change: 7 minutes, 18 seconds
  Number of LSP IDs (Tun_Instances) used: 2
  Number of Auto-bw Adjustment resize requests: 1
  Time since last Auto-bw Adjustment resize request: 1 minutes, 7 seconds
  Number of Auto-bw Overflow resize requests: 1
  Time since last Auto-bw Overflow resize request: 52 seconds
  Current LSP:
    Uptime: 52 seconds
    Selection: reoptimization
  Prior LSP:
    ID: path option 1 [1]
    Removal Trigger: configuration changed

```

In the command output:

- The auto-bw line indicates that automatic bandwidth adjustment is enabled for the tunnel.
- 300 is the time, in seconds, between bandwidth adjustments.
- 265 is the time, in seconds, remaining until the next bandwidth adjustment.
- 53 is the largest bandwidth sample since the last bandwidth adjustment.
- 13 is the last bandwidth adjustment and the bandwidth currently requested for the tunnel.
- The adjustment threshold is 5 percent.
- The overflow limit is 4.
- The overflow threshold is 25 percent.
- The overflow crossed is 1.

#### Example:

### Step 2 show running-config

Use this command to verify that the **tunnel mpls traffic-eng auto bw** command is as you expected. For example:

#### Example:

```

Router# show running-config
.
.
.
interface tunnell
  ip unnumbered loopback 0
  tunnel destination 192.168.17.17 255.255.255.0
  tunnel mode mpls traffic-eng
  tunnel mpls traffic-eng bandwidth 1500
  tunnel mpls traffic-eng priority 1 1
  tunnel mpls traffic-eng path-option 1 dynamic

tunnel mpls traffic-eng auto bw max-bw 2000 min-bw 1000 !Enable automatic bandwidth

```

#### Example:

```

.
.
.

```

The sample output from the **show running-config** command shows that the value 1500, in the **tunnel mpls traffic-eng bandwidth 1500** command, changes after an adjustment is made.

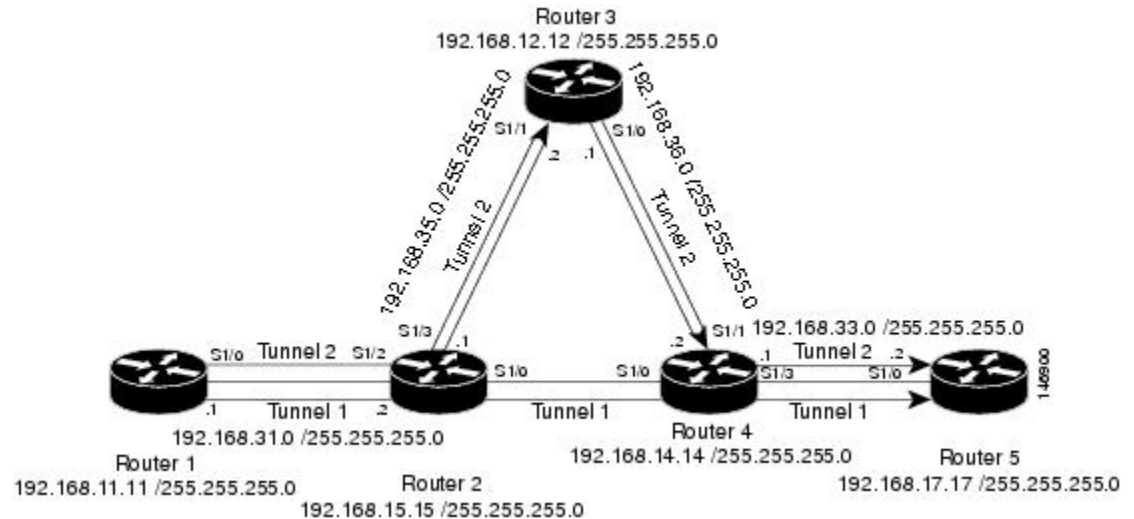


Example:

## Configuration Examples for MPLS TE--Automatic Bandwidth Adjustments for TE Tunnels

The figure below illustrates a sample MPLS topology. The following sections contain sample configuration examples to configure automatic bandwidth adjustment for MPLS TE tunnels originating on Router 1 and to enable automatic bandwidth adjustment for Tunnel 1.

**Figure 1** Sample MPLS Traffic Engineering Tunnel Configuration



The examples omit some configuration required for MPLS TE, such as the required RSVP and Interior Gateway Protocol (IGP) (IS-IS or OSPF) configuration, because the purpose of these examples is to illustrate the configuration for automatic bandwidth adjustment.

- [Configuring MPLS Traffic Engineering Automatic Bandwidth Example, page 17](#)
- [Tunnel Configuration for Automatic Bandwidth Example, page 18](#)

## Configuring MPLS Traffic Engineering Automatic Bandwidth Example

The following example shows how to use the `mpls traffic-eng auto-bw timers` command to enable automatic bandwidth adjustment for Router 1. The command specifies that the output rate is to be sampled every 10 minutes for tunnels configured for automatic bandwidth adjustment.

```
configure terminal
!
ip cef distributed
mpls traffic-eng tunnels
mpls traffic-eng auto-bw timers frequency 600 !Enable automatic bandwidth adjustment
```

```
interface loopback 0
ip address 192.168.11.11 255.255.255.0
```

## Tunnel Configuration for Automatic Bandwidth Example

The following example shows how to use the **tunnel mpls traffic-eng auto-bw** command to enable automatic bandwidth adjustment for Tunnel 1. The command specifies a maximum allowable bandwidth of 2000 kbps, a minimum allowable bandwidth of 1000 kbps, and that the default automatic bandwidth adjustment frequency of once a day be used.

```
interface tunnell
ip unnumbered loopback 0
tunnel destination 192.168.17.17
tunnel mode mpls traffic-eng
tunnel mpls traffic-eng bandwidth 1500
tunnel mpls traffic-eng priority 1 1
tunnel mpls traffic-eng path-option 1 dynamic
tunnel mpls traffic-eng auto-bw max-bw 2000 min-bw 1000    !Enable automatic bandwidth
                                                         !adjustment for Tunnell
```

## Additional References

### Related Documents

Related Topic	Document Title
IS-IS and OSPF commands	<i>Cisco IOS IP Routing Protocols Command Reference</i>
MPLS commands	<i>Cisco IOS Multiprotocol Label Switching Command Reference</i>
Quality of service solutions commands	<i>Cisco IOS Quality of Service Solutions Command Reference</i>
Quality of service solutions configuration	Quality of Service Overview

### Standards

Standard	Title
No new or modified standards are supported by this	--
feature, and support for existing standards has not	
been modified by this feature.	

**MIBs**

MIB	MIBs Link
MPLS Traffic Engineering MIB	To locate and download MIBs for selected platforms, Cisco IOS releases, and feature sets, use Cisco MIB Locator found at the following URL: <a href="http://www.cisco.com/go/mibs">http://www.cisco.com/go/mibs</a>

**RFCs**

RFC	Title
No new or modified RFCs are supported by this feature, and support for existing RFCs has not been modified.	--

**Technical Assistance**

Description	Link
<p>The Cisco Support website provides extensive online resources, including documentation and tools for troubleshooting and resolving technical issues with Cisco products and technologies.</p> <p>To receive security and technical information about your products, you can subscribe to various services, such as the Product Alert Tool (accessed from Field Notices), the Cisco Technical Services Newsletter, and Really Simple Syndication (RSS) Feeds.</p> <p>Access to most tools on the Cisco Support website requires a Cisco.com user ID and password.</p>	<a href="http://www.cisco.com/techsupport">http://www.cisco.com/techsupport</a>

## Feature Information for MPLS TE--Automatic Bandwidth Adjustment for TE Tunnels

The following table provides release information about the feature or features described in this module. This table lists only the software release that introduced support for a given feature in a given software release train. Unless noted otherwise, subsequent releases of that software release train also support that feature.

Use Cisco Feature Navigator to find information about platform support and Cisco software image support. To access Cisco Feature Navigator, go to [www.cisco.com/go/cfn](http://www.cisco.com/go/cfn). An account on Cisco.com is not required.

**Table 1**      **Feature Information for MPLS TE--Automatic Bandwidth Adjustment for TE Tunnels**

Feature Name	Releases	Feature Information
MPLS Traffic Engineering (TE)-- Automatic Bandwidth Adjustment for TE Tunnels	Release 12.2(33)SRE	<p>The MPLS Traffic Engineering (TE)--Automatic Bandwidth Adjustment for TE Tunnels feature provides the means to automatically adjust the bandwidth allocation for traffic engineering tunnels based on their measured traffic load. The configured bandwidth in the running configuration is changed due to the automatic bandwidth behavior.</p> <p>The following commands were introduced or modified to support automatic bandwidth adjustment threshold and overflow threshold: <b>mpls traffic-eng lsp attributes</b>, <b>show mpls traffic-eng tunnels</b>, and <b>tunnel mpls traffic-eng auto-bw</b>.</p>

Cisco and the Cisco logo are trademarks or registered trademarks of Cisco and/or its affiliates in the U.S. and other countries. To view a list of Cisco trademarks, go to this URL: [www.cisco.com/go/trademarks](http://www.cisco.com/go/trademarks). Third-party trademarks mentioned are the property of their respective owners. The use of the word partner does not imply a partnership relationship between Cisco and any other company. (1110R)

Any Internet Protocol (IP) addresses and phone numbers used in this document are not intended to be actual addresses and phone numbers. Any examples, command display output, network topology diagrams, and other figures included in the document are shown for illustrative purposes only. Any use of actual IP addresses or phone numbers in illustrative content is unintentional and coincidental.

© 2011 Cisco Systems, Inc. All rights reserved.