



Configuring Virtual Private LAN Services

Virtual Private LAN Services (VPLS) enables enterprises to link together their Ethernet-based LANs from multiple sites via the infrastructure provided by their service provider.

This module explains VPLS and how to configure it.

- [Finding Feature Information, page 1](#)
- [Prerequisites for Virtual Private LAN Services, page 1](#)
- [Restrictions for Virtual Private LAN Services, page 2](#)
- [Information About Virtual Private LAN Services, page 2](#)
- [How to Configure Virtual Private LAN Services, page 6](#)
- [Configuration Examples for Virtual Private LAN Services, page 37](#)
- [Feature Information for Configuring Virtual Private LAN Services, page 46](#)

Finding Feature Information

Your software release may not support all the features documented in this module. For the latest caveats and feature information, see [Bug Search Tool](#) and the release notes for your platform and software release. To find information about the features documented in this module, and to see a list of the releases in which each feature is supported, see the feature information table at the end of this module.

Use Cisco Feature Navigator to find information about platform support and Cisco software image support. To access Cisco Feature Navigator, go to www.cisco.com/go/cfn. An account on Cisco.com is not required.

Prerequisites for Virtual Private LAN Services

Before you configure Virtual Private LAN Services (VPLS), ensure that the network is configured as follows:

- Configure IP routing in the core so that provider edge (PE) devices can reach each other via IP.
- Configure Multiprotocol Label Switching (MPLS) in the core so that a label switched path (LSP) exists between PE devices.

- Configure a loopback interface for originating and terminating Layer 2 traffic. Ensure that PE devices can access the loopback interface of the other device. Note that the loopback interface is not required in all cases. For example, tunnel selection does not need a loopback interface when VPLS is directly mapped to a traffic engineering (TE) tunnel.
- Identify peer PE devices and attach Layer 2 circuits to VPLS at each PE device.

Restrictions for Virtual Private LAN Services

The following general restrictions apply to all transport types under Virtual Private LAN Services (VPLS):

- Split horizon is the default configuration to avoid broadcast packet looping and to isolate Layer 2 traffic. Split horizon prevents packets received from an emulated virtual circuit (VC) from being forwarded into another emulated VC. This technique is important for creating loop-free paths in a full-meshed network.
- Supported maximum values:
 - Total number of virtual forwarding instances (VFIs): 4096 (4 K)
 - Maximum combined number of edge and the core peer provider edge (PE) devices per VFI: VPLS 250 and hierarchical VPLS (H-VPLS) 500
 - Total number of VC: 12,288 (12 K)
- Software-based data plane is not supported.
- Auto-discovery mechanism is not supported.
- Load sharing and failover on redundant customer-edge-provider-edge (CE-PE) links are not supported.
- The addition or removal of MAC addresses with Label Distribution Protocol (LDP) is not supported.
- VFI is supported only with the **interface vlan** command.

Information About Virtual Private LAN Services

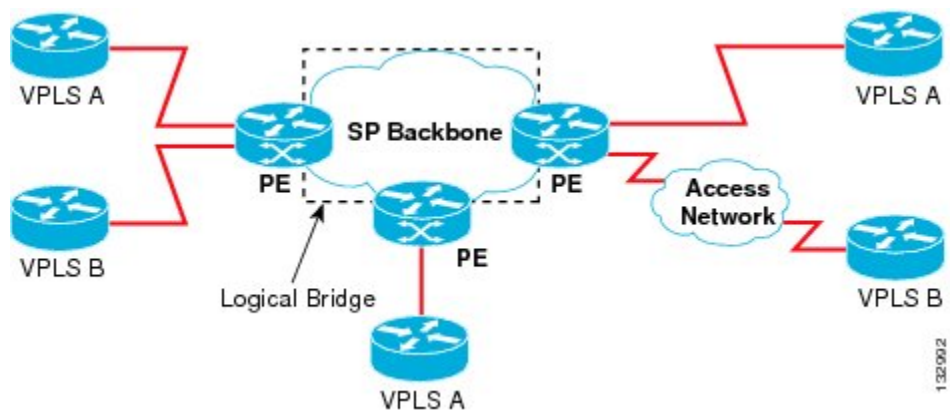
VPLS Overview

Virtual Private LAN Services (VPLS) enables enterprises to link together their Ethernet-based LANs from multiple sites via the infrastructure provided by their service provider. From the enterprise perspective, the service provider's public network looks like one giant Ethernet LAN. For the service provider, VPLS provides an opportunity to deploy another revenue-generating service on top of the existing network without major capital expenditures. Operators can extend the operational life of equipment in their network.

VPLS uses the provider core to join multiple attachment circuits together to simulate a virtual bridge that connects the multiple attachment circuits together. From a customer point of view, there is no topology for

VPLS. All customer edge (CE) devices appear to connect to a logical bridge emulated by the provider core (see the figure below).

Figure 1: VPLS Topology



Full-Mesh Configuration

A full-mesh configuration requires a full mesh of tunnel label switched paths (LSPs) between all provider edge (PE) devices that participate in Virtual Private LAN Services (VPLS). With a full mesh, signaling overhead and packet replication requirements for each provisioned virtual circuit (VC) on a PE can be high.

You set up a VPLS by first creating a virtual forwarding instance (VFI) on each participating PE device. The VFI specifies the VPN ID of a VPLS domain, the addresses of other PE devices in the domain, and the type of tunnel signaling and encapsulation mechanism for each peer PE device.

The set of VFIs formed by the interconnection of the emulated VCs is called a VPLS instance; it is the VPLS instance that forms the logic bridge over a packet switched network. After the VFI has been defined, it needs to be bound to an attachment circuit to the CE device. The VPLS instance is assigned a unique VPN ID.

PE devices use the VFI to establish a full-mesh LSP of emulated VCs to all other PE devices in the VPLS instance. PE devices obtain the membership of a VPLS instance through static configuration using the Cisco IOS CLI.

A full-mesh configuration allows the PE device to maintain a single broadcast domain. When the PE device receives a broadcast, multicast, or unknown unicast packet on an attachment circuit (AC), it sends the packet out on all other ACs and emulated circuits to all other CE devices participating in that VPLS instance. The CE devices see the VPLS instance as an emulated LAN.

To avoid the problem of a packet looping in the provider core, PE devices enforce a “split-horizon” principle for emulated VCs. In a split horizon, if a packet is received on an emulated VC, it is not forwarded on any other emulated VC.

The packet forwarding decision is made by looking up the Layer 2 VFI of a particular VPLS domain.

A VPLS instance on a particular PE device receives Ethernet frames that enter on specific physical or logical ports and populates a MAC table similarly to how an Ethernet switch works. The PE device can use the MAC address to switch these frames into the appropriate LSP for delivery to the another PE device at a remote site.

If the MAC address is not available in the MAC address table, the PE device replicates the Ethernet frame and floods it to all logical ports associated with that VPLS instance, except the ingress port from which it just

entered. The PE device updates the MAC table as it receives packets on specific ports and removes addresses not used for specific periods.

Static VPLS Configuration

Virtual Private LAN Services (VPLS) over Multiprotocol Label Switching-Transport Profile (MPLS-TP) tunnels allows you to deploy a multipoint-to-multipoint layer 2 operating environment over an MPLS-TP network for services such as Ethernet connectivity and multicast video. To configure static VPLS, you must specify a static range of MPLS labels using the **mpls label range** command with the **static** keyword.

H-VPLS

Hierarchical VPLS (H-VPLS) reduces signaling and replication overhead by using full-mesh and hub-and-spoke configurations. Hub-and-spoke configurations operate with split horizon to allow packets to be switched between pseudowires (PWs), effectively reducing the number of PWs between provider edge (PE) devices.

**Note**

Split horizon is the default configuration to avoid broadcast packet looping.

Supported Features

Multipoint-to-Multipoint Support

In a multipoint-to-multipoint network, two or more devices are associated over the core network. No single device is designated as the Root node; all devices are considered as Root nodes. All frames can be exchanged directly between the nodes.

Non-Transparent Operation

A virtual Ethernet connection (VEC) can be transparent or non-transparent with respect to Ethernet protocol data units (PDUs). The VEC non-transparency allows users to have a Frame Relay-type service between Layer 3 devices.

Circuit Multiplexing

Circuit multiplexing allows a node to participate in multiple services over a single Ethernet connection. By participating in multiple services, the Ethernet connection is attached to multiple logical networks. Some examples of possible service offerings are VPN services between sites, Internet services, and third-party connectivity for intercompany communications.

MAC-Address Learning, Forwarding, and Aging

Provider edge (PE) devices must learn remote MAC addresses and directly attached MAC addresses on ports that face the external network. MAC address learning accomplishes this by deriving the topology and forwarding

information from packets originating at customer sites. A timer is associated with stored MAC addresses. After the timer expires, the entry is removed from the table.

Jumbo Frame Support

Jumbo frame support provides support for frame sizes between 1548 and 9216 bytes. You use the CLI to establish the jumbo frame size for any value specified in the above range. The default value is 1500 bytes in any Layer 2/VLAN interface. You can configure jumbo frame support on a per-interface basis.

Q-in-Q Support and Q-in-Q to EoMPLS Support

With 802.1Q tunneling (Q-in-Q), the customer edge (CE) device issues VLAN-tagged packets and VPLS forwards these packets to a far-end CE device. Q-in-Q refers to the fact that one or more 802.1Q tags may be located in a packet within the interior of the network. As packets are received from a CE device, an additional VLAN tag is added to incoming Ethernet packets to segregate traffic from different CE devices. Untagged packets originating from a CE device use a single tag within the interior of the VLAN switched network, whereas previously tagged packets originating from the CE device use two or more tags.

VPLS Services

Transparent LAN Service

Transparent LAN Service (TLS) is an extension to the point-to-point port-based Ethernet over Multiprotocol Label Switching (EoMPLS), which provides bridging protocol transparency (for example, bridge protocol data units [BPDUs]) and VLAN values. Bridges see this service as an Ethernet segment. With TLS, the PE device forwards all Ethernet packets received from the customer-facing interface (including tagged and untagged packets, and BPDUs) as follows:

- To a local Ethernet interface or an emulated virtual circuit (VC) if the destination MAC address is found in the Layer 2 forwarding table.
- To all other local Ethernet interfaces and emulated VCs belonging to the same VPLS domain if the destination MAC address is a multicast or broadcast address or if the destination MAC address is not found in the Layer 2 forwarding table.

**Note**

You must enable Layer 2 protocol tunneling to run the Cisco Discovery Protocol (CDP), the VLAN Trunking Protocol (VTP), and the Spanning-Tree Protocol (STP).

Ethernet Virtual Connection Service

Ethernet Virtual Connection Service (EVCS) is an extension to the point-to-point VLAN-based Ethernet over MPLS (EoMPLS) that allows devices to reach multiple intranet and extranet locations from a single physical port. With EVCS, the provider edge (PE) device forwards all Ethernet packets with a particular VLAN tag received from the customer-facing interface (excluding bridge protocol data units [BPDUs]) as follows:

- To a local Ethernet interface or to an emulated virtual circuit (VC) if the destination MAC address is found in the Layer 2 forwarding table.

- To all other local Ethernet interfaces and emulated VCs belonging to the same Virtual Private LAN Services (VPLS) domain if the destination MAC address is a multicast or a broadcast address or if the destination MAC address is not found in the Layer 2 forwarding table.

**Note**

Because it has only local significance, the demultiplexing VLAN tag that identifies a VPLS domain is removed before the packet is forwarded to the outgoing Ethernet interfaces or emulated VCs.

VPLS Integrated Routing and Bridging

Virtual Private LAN Services (VPLS) integrated routing and bridging routes Layer 3 traffic and switches Layer 2 frames for pseudowire connections between provider edge (PE) devices using a VPLS multipoint PE device. The ability to route frames to and from these interfaces supports the termination of a pseudowire into a Layer 3 network (VPN or global) on the same switch or to tunnel Layer 3 frames over a Layer 2 tunnel (VPLS).

To configure routing support for a pseudowire, configure an IP address and other Layer 3 features for the Layer 3 domain in interface configuration mode.

**Note**

VPLS integrated routing and bridging does not support multicast routing. VPLS integrated routing and bridging is also known as routed pseudowire and routed VPLS.

The following example shows how to assign IP address 10.10.10.1 to a bridge domain interface (BDI).

```
interface bdi 100
 ip address 10.10.10.1 255.255.255.0
```

How to Configure Virtual Private LAN Services

Provisioning a Virtual Private LAN Services (VPLS) link involves provisioning the associated attachment circuit and a virtual forwarding instance (VFI) on a provider edge (PE) device.

In Cisco IOS XE Release 3.7S, the L2VPN Protocol-Based CLIs feature was introduced. This feature provides a set of processes and an improved infrastructure for developing and delivering Cisco IOS software on various Cisco platforms. This feature introduces new commands and modifies or replaces existing commands to achieve a consistent functionality across Cisco platforms and provide cross-Operating System (OS) support.

This section consists of tasks that use the commands existing prior to Cisco IOS XE Release 3.7S and a corresponding task that uses the commands introduced or modified by the L2VPN Protocol-Based CLIs feature.

Configuring PE Layer 2 Interfaces on CE Devices

You can configure the Ethernet flow point (EFP) as a Layer 2 virtual interface. You can also select tagged or untagged traffic from a customer edge (CE) device.

Configuring 802.1Q Access Ports for Tagged Traffic from a CE Device


Note

When Ethernet Virtual Connection Service (EVCS) is configured, a provider edge (PE) device forwards all Ethernet packets with a particular VLAN tag to a local Ethernet interface or emulated virtual circuit (VC) if the destination MAC address is found in the Layer 2 forwarding table.

SUMMARY STEPS

1. **enable**
2. **configure terminal**
3. **interface** *type number*
4. **no ip address** [*ip-address mask*] [**secondary**]
5. **negotiation auto**
6. **service instance** *si-id* **ethernet**
7. **encapsulation dot1q** *vlan-id*
8. **bridge-domain** *bd-id*
9. **end**

DETAILED STEPS

| | Command or Action | Purpose |
|---------------|---|---|
| Step 1 | enable Example: Device> enable | Enables privileged EXEC mode. • Enter your password if prompted. |
| Step 2 | configure terminal Example: Device# configure terminal | Enters global configuration mode. |
| Step 3 | interface <i>type number</i> Example: Device(config)# interface gigabitethernet 1/0/1 | Specifies an interface and enters interface configuration mode. |
| Step 4 | no ip address [<i>ip-address mask</i>] [secondary] Example: Device(config-if)# no ip address | Disables IP processing. |

| | Command or Action | Purpose |
|---------------|--|--|
| Step 5 | negotiation auto Example: Device(config-if)# negotiation auto | Enables the autonegotiation protocol to configure the speed, duplex, and automatic flow control of the Gigabit Ethernet interface. |
| Step 6 | service instance <i>si-id</i> ethernet Example: Device(config-if)# service instance 10 ethernet | Specifies the service instance ID and enters service instance configuration mode. |
| Step 7 | encapsulation dot1q <i>vlan-id</i> Example: Device(config-if-srv)# encapsulation dot1q 200 | Defines the matching criteria to map 802.1Q frames ingress on an interface to the appropriate service instance. Ensure that the interface on the adjoining customer edge (CE) device is on the same VLAN as this PE device. |
| Step 8 | bridge-domain <i>bd-id</i> Example: Device(config-if-srv)# bridge-domain 100 | Binds a service instance to a bridge domain instance. |
| Step 9 | end Example: Device(config-if-srv)# end | Exits service instance configuration mode and returns to privileged EXEC mode. |

Configuring 802.1Q Access Ports for Tagged Traffic from a CE Device: Alternate Configuration



Note

When Ethernet Virtual Connection Service (EVCS) is configured, the PE device forwards all Ethernet packets with a particular VLAN tag to a local Ethernet interface or an emulated virtual circuit (VC) if the destination MAC address is found in the Layer 2 forwarding table.

SUMMARY STEPS

1. **enable**
2. **configure terminal**
3. **interface** *type number*
4. **no ip address** [*ip-address mask*] [**secondary**]
5. **negotiation auto**
6. **service instance** *si-id* **ethernet**
7. **encapsulation dot1q** *vlan-id*
8. **exit**
9. **exit**
10. **bridge-domain** *bd-id*
11. **member** *interface-type-number* **service-instance** *service-id* [**split-horizon group** *group-id*]
12. **end**

DETAILED STEPS

| | Command or Action | Purpose |
|---------------|---|--|
| Step 1 | enable Example: Device> enable | Enables privileged EXEC mode. <ul style="list-style-type: none"> • Enter your password if prompted. |
| Step 2 | configure terminal Example: Device# configure terminal | Enters global configuration mode. |
| Step 3 | interface <i>type number</i> Example: Device(config)# interface gigabitethernet 1/0/1 | Specifies an interface and enters interface configuration mode. |
| Step 4 | no ip address [<i>ip-address mask</i>] [secondary] Example: Device(config-if)# no ip address | Disables IP processing. |
| Step 5 | negotiation auto Example: Device(config-if)# negotiation auto | Enables the autonegotiation protocol to configure the speed, duplex, and automatic flow control of the Gigabit Ethernet interface. |

| | Command or Action | Purpose |
|----------------|---|---|
| Step 6 | service instance <i>si-id</i> ethernet Example: <pre>Device(config-if)# service instance 10 ethernet</pre> | Specifies a service instance ID and enters service instance configuration mode. |
| Step 7 | encapsulation dot1q <i>vlan-id</i> Example: <pre>Device(config-if-srv)# encapsulation dot1q 200</pre> | Defines the matching criteria to map 802.1Q frames ingress on an interface to the appropriate service instance. <ul style="list-style-type: none"> • Ensure that the interface on the adjoining customer edge (CE) device is on the same VLAN as this provider edge (PE) device. |
| Step 8 | exit Example: <pre>Device(config-if-srv)# exit</pre> | Exits service instance configuration mode and returns to interface configuration mode. |
| Step 9 | exit Example: <pre>Device(config-if)# exit</pre> | Exits interface configuration mode and returns to global configuration mode. |
| Step 10 | bridge-domain <i>bd-id</i> Example: <pre>Device(config)# bridge-domain 100</pre> | Specifies the bridge domain ID and enters bridge-domain configuration mode. |
| Step 11 | member <i>interface-type-number</i> service-instance <i>service-id</i> [split-horizon group <i>group-id</i>] Example: <pre>Device(config-bdomain)# member gigabitethernet1/0/1 service-instance 1000</pre> | Binds a service instance to a bridge domain instance. |
| Step 12 | end Example: <pre>Device(config-bdomain)# end</pre> | Exits bridge-domain configuration mode and returns to privileged EXEC mode. |

Configuring Access Ports for Untagged Traffic from a CE Device

SUMMARY STEPS

1. **enable**
2. **configure terminal**
3. **interface** *type number*
4. **no ip address** [*ip-address mask*] [*secondary*]
5. **negotiation auto**
6. **service instance** *si-id* **ethernet**
7. **encapsulation untagged**
8. **bridge-domain** *bd-id*
9. **end**

DETAILED STEPS

| | Command or Action | Purpose |
|---------------|---|--|
| Step 1 | enable Example: Device> enable | Enables privileged EXEC mode. <ul style="list-style-type: none"> • Enter your password if prompted. |
| Step 2 | configure terminal Example: Device# configure terminal | Enters global configuration mode. |
| Step 3 | interface <i>type number</i> Example: Device(config)# interface gigabitethernet 1/0/0 | Specifies an interface and enters interface configuration mode. |
| Step 4 | no ip address [<i>ip-address mask</i>] [<i>secondary</i>] Example: Device(config-if)# no ip address | Disables IP processing. |
| Step 5 | negotiation auto Example: Device(config-if)# negotiation auto | Enables the autonegotiation protocol to configure the speed, duplex, and automatic flow control of the Gigabit Ethernet interface. |

| | Command or Action | Purpose |
|---------------|--|--|
| Step 6 | service instance <i>si-id</i> ethernet Example: <pre>Device(config-if)# service instance 10 ethernet</pre> | Specifies a service instance ID and enters service instance configuration mode. |
| Step 7 | encapsulation untagged Example: <pre>Device(config-if-srv)# encapsulation untagged</pre> | Defines the matching criteria to map untagged ingress Ethernet frames on an interface to the appropriate service instance. <ul style="list-style-type: none"> • Ensure that the interface on the adjoining customer edge (CE) device is on the same VLAN as this provider edge (PE) device. |
| Step 8 | bridge-domain <i>bd-id</i> Example: <pre>Device(config-if-srv)# bridge-domain 100</pre> | Binds a service instance or MAC tunnel to a bridge domain instance. |
| Step 9 | end Example: <pre>Device(config-if-srv)# end</pre> | Exits service instance configuration mode and returns to privileged EXEC mode. |

Configuring Access Ports for Untagged Traffic from a CE Device: Alternate Configuration

SUMMARY STEPS

1. **enable**
2. **configure terminal**
3. **interface *type number***
4. **no ip address [*ip-address mask*] [*secondary*]**
5. **negotiation auto**
6. **service instance *si-id* ethernet**
7. **encapsulation untagged**
8. **exit**
9. **exit**
10. **bridge-domain *bd-id***
11. **member *interface-type-number* service-instance *service-id* [*split-horizon group group-id*]**
12. **end**

DETAILED STEPS

| | Command or Action | Purpose |
|---------------|---|---|
| Step 1 | enable Example: Device> enable | Enables privileged EXEC mode. <ul style="list-style-type: none"> • Enter your password if prompted. |
| Step 2 | configure terminal Example: Device# configure terminal | Enters global configuration mode. |
| Step 3 | interface <i>type number</i> Example: Device(config)# interface gigabitethernet 4/4 | Specifies an interface and enters interface configuration mode. |
| Step 4 | no ip address [<i>ip-address mask</i>] [secondary] Example: Device(config-if)# no ip address | Disables IP processing. |
| Step 5 | negotiation auto Example: Device(config-if)# negotiation auto | Enables the autonegotiation protocol to configure the speed, duplex, and automatic flow control of the Gigabit Ethernet interface. |
| Step 6 | service instance <i>si-id</i> ethernet Example: Device(config-if)# service instance 10 ethernet | Specifies a service instance ID and enters service instance configuration mode. |
| Step 7 | encapsulation untagged Example: Device(config-if-srv)# encapsulation untagged | Defines the matching criteria to map untagged ingress Ethernet frames on an interface to the appropriate service instance. <ul style="list-style-type: none"> • Ensure that the interface on the adjoining customer edge (CE) device is on the same VLAN as this provider edge (PE) device. |
| Step 8 | exit Example: Device(config-if-srv)# exit | Exits service instance configuration mode and returns to interface configuration mode. |

| | Command or Action | Purpose |
|----------------|--|--|
| Step 9 | exit Example: Device(config-if)# exit | Exits interface configuration mode and returns to global configuration mode. |
| Step 10 | bridge-domain <i>bd-id</i> Example: Device(config)# bridge-domain 100 | Specifies the bridge domain ID and enters bridge-domain configuration mode. |
| Step 11 | member <i>interface-type-number</i> service-instance <i>service-id</i> [split-horizon group <i>group-id</i>] Example: Device(config-bdmain)# member gigabitethernet4/4 service-instance 1000 | Binds a service instance to a bridge domain instance. |
| Step 12 | end Example: Device(config-bdmain)# end | Exits bridge-domain configuration mode and returns to privileged EXEC mode. |

Configuring Q-in-Q EFP



Note

When a thread-local storage (TLS) is configured, the provider edge (PE) device forwards all Ethernet packets received from the customer edge (CE) device to all local Ethernet interfaces and emulated virtual circuits (VCs) that belong to the same Virtual Private LAN Services (VPLS) domain if the MAC address is not found in the Layer 2 forwarding table.

SUMMARY STEPS

1. **enable**
2. **configure terminal**
3. **interface** *type number*
4. **no ip address** [*ip-address mask*] [**secondary**]
5. **negotiation auto**
6. **service instance** *si-id* **ethernet**
7. **encapsulation dot1q** *vlan-id* **second-dot1q** *vlan-id*
8. **bridge-domain** *bd-id*
9. **end**

DETAILED STEPS

| | Command or Action | Purpose |
|---------------|---|--|
| Step 1 | enable Example: Device> enable | Enables privileged EXEC mode. <ul style="list-style-type: none"> • Enter your password if prompted. |
| Step 2 | configure terminal Example: Device# configure terminal | Enters global configuration mode. |
| Step 3 | interface <i>type number</i> Example: Device(config)# interface gigabitethernet 1/0/2 | Specifies an interface and enters interface configuration mode. |
| Step 4 | no ip address [<i>ip-address mask</i>] [secondary] Example: Device(config-if)# no ip address | Disables IP processing. |
| Step 5 | negotiation auto Example: Device(config-if)# negotiation auto | Enables the autonegotiation protocol to configure the speed, duplex, and automatic flow control of the Gigabit Ethernet interface. |

| | Command or Action | Purpose |
|---------------|--|---|
| Step 6 | service instance <i>si-id</i> ethernet Example: <pre>Device(config-if)# service instance 10 ethernet</pre> | Specifies a service instance ID and enters service instance configuration mode. |
| Step 7 | encapsulation dot1q <i>vlan-id</i> second-dot1q <i>vlan-id</i> Example: <pre>Device(config-if-srv)# encapsulation dot1q 200 second-dot1q 400</pre> | Defines the matching criteria to map Q-in-Q ingress frames on an interface to the appropriate service instance. <ul style="list-style-type: none"> • Ensure that the interface on the adjoining CE device is on the same VLAN as this PE device. |
| Step 8 | bridge-domain <i>bd-id</i> Example: <pre>Device(config-if-srv)# bridge-domain 100</pre> | Binds a service instance or a MAC tunnel to a bridge domain instance. |
| Step 9 | end Example: <pre>Device(config-if-srv)# end</pre> | Exits service instance configuration mode and returns to privileged EXEC mode. |

Configuring Q-in-Q EFP: Alternate Configuration



Note

When a thread-local storage (TLS) is configured, the provider edge (PE) device forwards all Ethernet packets received from the customer edge (CE) device to all local Ethernet interfaces and emulated virtual circuits (VCs) belonging to the same Virtual Private LAN Services (VPLS) domain if the MAC address is not found in the Layer 2 forwarding table.

SUMMARY STEPS

1. **enable**
2. **configure terminal**
3. **interface** *type number*
4. **no ip address** [*ip-address mask*] [**secondary**]
5. **negotiation auto**
6. **service instance** *si-id* **ethernet**
7. **encapsulation dot1q** *vlan-id* **second-dot1q** *vlan-id*
8. **exit**
9. **exit**
10. **bridge-domain** *bd-id*
11. **member** *interface-type-number* **service-instance** *service-id* [**split-horizon group** *group-id*]
12. **end**

DETAILED STEPS

| | Command or Action | Purpose |
|---------------|---|--|
| Step 1 | enable Example: Device> enable | Enables privileged EXEC mode. <ul style="list-style-type: none"> • Enter your password if prompted. |
| Step 2 | configure terminal Example: Device# configure terminal | Enters global configuration mode. |
| Step 3 | interface <i>type number</i> Example: Device(config)# interface gigabitethernet 1/0/2 | Specifies an interface and enters interface configuration mode. |
| Step 4 | no ip address [<i>ip-address mask</i>] [secondary] Example: Device(config-if)# no ip address | Disables IP processing. |
| Step 5 | negotiation auto Example: Device(config-if)# negotiation auto | Enables the autonegotiation protocol to configure the speed, duplex, and automatic flow control of the Gigabit Ethernet interface. |

| | Command or Action | Purpose |
|----------------|--|---|
| Step 6 | service instance <i>si-id</i> ethernet Example: <pre>Device(config-if)# service instance 10 ethernet</pre> | Specifies a service instance ID and enters service instance configuration mode. |
| Step 7 | encapsulation dot1q <i>vlan-id</i> second-dot1q <i>vlan-id</i> Example: <pre>Device(config-if-srv)# encapsulation dot1q 200 second-dot1q 400</pre> | Defines the matching criteria to map Q-in-Q ingress frames on an interface to the appropriate service instance. <ul style="list-style-type: none"> • Ensure that the interface on the adjoining CE device is on the same VLAN as this PE device. |
| Step 8 | exit Example: <pre>Device(config-if-srv)# exit</pre> | Exits service instance configuration mode and returns to interface configuration mode. |
| Step 9 | exit Example: <pre>Device(config-if)# exit</pre> | Exits interface configuration mode and returns to global configuration mode. |
| Step 10 | bridge-domain <i>bd-id</i> Example: <pre>Device(config)# bridge-domain 100</pre> | Specifies the bridge domain ID and enters bridge-domain configuration mode. |
| Step 11 | member <i>interface-type-number</i> service-instance <i>service-id</i> [split-horizon group <i>group-id</i>] Example: <pre>Device(config-bdomain)# member gigabitethernet0/0/0 service-instance 1000</pre> | Binds a service instance to a bridge domain instance. |
| Step 12 | end Example: <pre>Device(config-bdomain)# end</pre> | Exits bridge-domain configuration mode and returns to privileged EXEC mode. |

Configuring MPLS on a PE Device

To configure Multiprotocol Label Switching (MPLS) on a provider edge (PE) device, configure the required MPLS parameters.

**Note**

Before configuring MPLS, ensure that IP connectivity exists between all PE devices by configuring Interior Gateway Protocol (IGP), Open Shortest Path First (OSPF), or Intermediate System to Intermediate System (IS-IS) between PE devices.

SUMMARY STEPS

1. **enable**
2. **configure terminal**
3. **mpls label protocol {ldp | tdp}**
4. **mpls ldp logging neighbor-changes**
5. **mpls ldp discovery hello holdtime *seconds***
6. **mpls ldp router-id *interface-type-number* [force]**
7. **end**

DETAILED STEPS

| | Command or Action | Purpose |
|---------------|---|--|
| Step 1 | enable Example: Device> enable | Enables privileged EXEC mode. • Enter your password if prompted. |
| Step 2 | configure terminal Example: Device# configure terminal | Enters global configuration mode. |
| Step 3 | mpls label protocol {ldp tdp} Example: Device(config)# mpls label protocol ldp | Specifies the label distribution protocol for the platform. |
| Step 4 | mpls ldp logging neighbor-changes Example: Device(config)# mpls ldp logging neighbor-changes | (Optional) Generates system error logging (syslog) messages when LDP sessions go down. |
| Step 5 | mpls ldp discovery hello holdtime <i>seconds</i> Example: Device(config)# mpls ldp discovery hello holdtime 5 | Configures the interval between the transmission of consecutive LDP discovery hello messages or the hold time for an LDP transport connection. |

| | Command or Action | Purpose |
|---------------|---|--|
| Step 6 | mpls ldp router-id <i>interface-type-number</i> [force] Example: <pre>Device(config)# mpls ldp router-id loopback0 force</pre> | Specifies a preferred interface for the LDP router ID. |
| Step 7 | end Example: <pre>Device(config)# end</pre> | Exits global configuration mode and returns to privileged EXEC mode. |

Configuring a VFI on a PE Device

The virtual forwarding interface (VFI) specifies the VPN ID of a Virtual Private LAN Services (VPLS) domain, the addresses of other provider edge (PE) devices in the domain, and the type of tunnel signaling and encapsulation mechanism for each peer. Perform this task to configure a VFI:


Note

Only Multiprotocol Label Switching (MPLS) encapsulation is supported.

SUMMARY STEPS

1. **enable**
2. **configure terminal**
3. **l2 vfi** *name* **manual**
4. **vpn id** *vpn-id*
5. **neighbor** *remote-router-id* *vc-id* {**encapsulation** *encapsulation-type* | **pw-class** *pw-name*} [**no-split-horizon**]
6. **bridge-domain** *bd-id*
7. **end**

DETAILED STEPS

| | Command or Action | Purpose |
|---------------|--|---|
| Step 1 | enable Example: <pre>Device> enable</pre> | Enables privileged EXEC mode. <ul style="list-style-type: none"> • Enter your password if prompted. |

| | Command or Action | Purpose |
|---------------|---|--|
| Step 2 | configure terminal Example: Device# configure terminal | Enters global configuration mode. |
| Step 3 | l2 vfi name manual Example: Device(config)# l2 vfi vfi110 manual | Establishes a Layer 2 VPN (L2VPN) virtual forwarding interface (VFI) between two or more separate networks and enters VFI configuration mode. |
| Step 4 | vpn id vpn-id Example: Device(config-vfi)# vpn id 110 | Configures a VPN ID for a VPLS domain. <ul style="list-style-type: none"> The emulated VCs bound to this Layer 2 virtual routing and forwarding (VRF) instance use this VPN ID for signaling. |
| Step 5 | neighbor remote-router-id vc-id {encapsulation encapsulation-type pw-class pw-name} [no-split-horizon] Example: Device(config-vfi)# neighbor 172.16.10.2 4 encapsulation mpls | Specifies the type of tunnel signaling and encapsulation mechanism for each VPLS peer. <p>Note Split horizon is the default configuration to avoid broadcast packet looping and to isolate Layer 2 traffic. Use the no-split-horizon keyword to disable split horizon and to configure multiple VCs per spoke into the same VFI.</p> |
| Step 6 | bridge-domain bd-id Example: Device(config-vfi)# bridge-domain 100 | Specifies a bridge domain. |
| Step 7 | end Example: Device(config-vfi)# end | Exits VFI configuration mode and returns to privileged EXEC mode. |

Configuring a VFI on a PE Device: Alternate Configuration

SUMMARY STEPS

1. **enable**
2. **configure terminal**
3. **l2vpn vfi context** *name*
4. **vpn id** *id*
5. **member** *ip-address* [*vc-id*] **encapsulation mpls**
6. **exit**
7. **bridge-domain** *bd-id*
8. **member vfi** *vfi-name*
9. **end**

DETAILED STEPS

| | Command or Action | Purpose |
|---------------|--|--|
| Step 1 | enable Example: Device> enable | Enables privileged EXEC mode. • Enter your password if prompted. |
| Step 2 | configure terminal Example: Device# configure terminal | Enters global configuration mode. |
| Step 3 | l2vpn vfi context <i>name</i> Example: Device(config)# l2vpn vfi context vfi110 | Establishes a L2VPN VFI between two or more separate networks, and enters VFI configuration mode. |
| Step 4 | vpn id <i>id</i> Example: Device(config-vfi)# vpn id 110 | Configures a VPN ID for a Virtual Private LAN Services (VPLS) domain. The emulated virtual circuits (VCs) bound to this Layer 2 virtual routing and forwarding (VRF) instance use this VPN ID for signaling. |
| Step 5 | member <i>ip-address</i> [<i>vc-id</i>] encapsulation mpls Example: Device(config-vfi)# member 172.16.10.2 4 encapsulation mpls | Specifies the devices that form a point-to-point Layer 2 VPN (L2VPN) virtual forwarding interface (VFI) connection and Multiprotocol Label Switching (MPLS) as the encapsulation type. |

| | Command or Action | Purpose |
|---------------|---|---|
| Step 6 | exit Example: Device(config-vfi)# exit | Exits VFI configuration mode and returns to global configuration mode. |
| Step 7 | bridge-domain <i>bd-id</i> Example: Device(config)# bridge-domain 100 | Specifies a bridge domain and enters bridge-domain configuration mode. |
| Step 8 | member vfi <i>vfi-name</i> Example: Device(config-bdomain)# member vfi vfi110 | Binds a VFI instance to a bridge domain instance. |
| Step 9 | end Example: Device(config-bdomain)# end | Exits bridge-domain configuration mode and returns to privileged EXEC mode. |

Configuring Static Virtual Private LAN Services

To configure static Virtual Private LAN Services (VPLS), perform the tasks that follow.

Configuring a Pseudowire Class for Static VPLS

The configuration of pseudowires between provider edge (PE) devices helps in the successful transmission of the Layer 2 frames between PE devices.

Use the pseudowire template to configure the virtual circuit (VC) type for the virtual path identifier (VPI) pseudowire. In the following task, the pseudowire will go through a Multiprotocol Label Switching (MPLS)-Tunneling Protocol (TP) tunnel.

The pseudowire template configuration specifies the characteristics of the tunneling mechanism that is used by the pseudowires, which are:

- Encapsulation type
- Control protocol
- Payload-specific options
- Preferred path

Perform this task to configure a pseudowire template for static Virtual Private LAN Services (VPLS).

SUMMARY STEPS

1. **enable**
2. **configure terminal**
3. **template type pseudowire** *name*
4. **encapsulation mpls**
5. **exit**
6. **interface pseudowire** *number*
7. **source template type pseudowire** *name*
8. **neighbor** *peer-address* *vcid-value*
9. **signaling protocol none**
10. **preferred-path interface Tunnel-tp** *interface-number*
11. **end**

DETAILED STEPS

| | Command or Action | Purpose |
|---------------|--|---|
| Step 1 | enable Example: Device> enable | Enables privileged EXEC mode. <ul style="list-style-type: none"> • Enter your password if prompted. |
| Step 2 | configure terminal Example: Device# configure terminal | Enters global configuration mode. |
| Step 3 | template type pseudowire <i>name</i> Example: Device(config)# template type pseudowire static-vpls | Specifies the template type as pseudowire and enters template configuration mode. |
| Step 4 | encapsulation mpls Example: Device(config-template)# encapsulation mpls | Specifies the tunneling encapsulation. <ul style="list-style-type: none"> • For Any Transport over MPLS (AToM), the encapsulation type is MPLS. |
| Step 5 | exit Example: Device(config-template)# exit | Exits template configuration mode and returns to global configuration mode. |

| | Command or Action | Purpose |
|----------------|---|---|
| Step 6 | interface pseudowire <i>number</i> Example: Device(config)# interface pseudowire 1 | Establishes a pseudowire interface and enters interface configuration mode. |
| Step 7 | source template type pseudowire <i>name</i> Example: Device(config-if)# source template type pseudowire static-vpls | Configures the source template type of the configured pseudowire. |
| Step 8 | neighbor <i>peer-address</i> <i>vcid-value</i> Example: Device(config-if)# neighbor 10.0.0.1 123 | Specifies the peer IP address and VC ID value of a Layer 2 VPN (L2VPN) pseudowire. |
| Step 9 | signaling protocol none Example: Device(config-if)# signaling protocol none | Specifies that no signaling protocol is configured for the pseudowire class. |
| Step 10 | preferred-path interface Tunnel-tp <i>interface-number</i> Example: Device(config-if)# preferred-path interface Tunnel-tp 1 | (Optional) Specifies the path that traffic uses: an MPLS Traffic Engineering (TE) tunnel or destination IP address and Domain Name Server (DNS) name. |
| Step 11 | end Example: Device(config-if)# end | Exits interface configuration mode and returns to privileged EXEC mode. |

Configuring VFI for Static VPLS

SUMMARY STEPS

1. **enable**
2. **configure terminal**
3. **l2 vfi vfi-name manual**
4. **vpn id vpn-id**
5. **bridge-domain bd-id**
6. **neighbor ip-address pw-class pw-name**
7. **exit**
8. **interface type number**
9. **xconnect peer-ip-address vc-id {encapsulation {l2tpv3 [manual] | mpls [manual]} | pw-class pw-class-name} [pw-class pw-class-name]**
10. **mpls label local-pseudowire-label remote-pseudowire-label**
11. **mpls control-word**
12. **end**

DETAILED STEPS

| | Command or Action | Purpose |
|---------------|--|--|
| Step 1 | enable Example: Device> enable | Enables privileged EXEC mode. • Enter your password if prompted. |
| Step 2 | configure terminal Example: Device# configure terminal | Enters global configuration mode. |
| Step 3 | l2 vfi vfi-name manual Example: Device(config)# l2 vfi static-vfi manual | Establishes a Layer 2 VPN (L2VPN) virtual forwarding interface (VFI) between two or more separate networks, and enters VFI configuration mode. |
| Step 4 | vpn id vpn-id Example: Device(config-vfi)# vpn id 100 | Specifies the VPN ID. |

| | Command or Action | Purpose |
|----------------|--|---|
| Step 5 | bridge-domain <i>bd-id</i> Example: Device(config-vfi)# bridge-domain 24 | Specifies the bridge domain. |
| Step 6 | neighbor <i>ip-address</i> pw-class <i>pw-name</i> Example: Device(config-vfi)# neighbor 10.3.4.4 pw-class static-vpls | Specifies the IP address of the peer and the pseudowire class. |
| Step 7 | exit Example: Device(config-vfi)# exit | Exits VFI configuration mode and returns to global configuration mode. |
| Step 8 | interface <i>type number</i> Example: Device(config)# interface gigabitethernet 1/2/1 | Specifies an interface and enters interface configuration mode. |
| Step 9 | xconnect <i>peer-ip-address</i> <i>vc-id</i> { encapsulation { l2tpv3 [manual] mpls [manual]} pw-class <i>pw-class-name</i> } [pw-class <i>pw-class-name</i>] Example: Device(config-if)# xconnect 10.131.191.252 100 encapsulation mpls manual pw-class mpls | Binds an attachment circuit (AC) to a pseudowire, configures an Any Transport over MPLS (AToM) static pseudowire, and enters xconnect configuration mode. |
| Step 10 | mpls label <i>local-pseudowire-label</i> <i>remote-pseudowire-label</i> Example: Device(config-if-xconn)# mpls label 301 17 | Configures an Any Transport over MPLS (AToM) static pseudowire connection by defining local and remote circuit labels. |
| Step 11 | mpls control-word Example: Device(config-if-xconn)# mpls control-word | (Optional) Enables the Multiprotocol Label Switching (MPLS) control word in an Any Transport over MPLS (AToM) static pseudowire connection. |
| Step 12 | end Example: Device(config-if-xconn)# end | Exits xconnect configuration mode and returns to privileged EXEC mode. |

Configuring a VFI for Static VPLS: Alternate Configuration

SUMMARY STEPS

1. **enable**
2. **configure terminal**
3. **l2vpn vfi context** *vfi-name*
4. **vpn id** *vpn-id*
5. **exit**
6. **interface** *type number*
7. **encapsulation mpls**
8. **neighbor** *ip-address* *vc-id*
9. **label** *local-pseudowire-label* *remote-pseudowire-label*
10. **control-word** {**include** | **exclude**}
11. **exit**
12. **bridge-domain** *bd-id*
13. **member vfi** *vfi-name*
14. **end**

DETAILED STEPS

| | Command or Action | Purpose |
|---------------|--|---|
| Step 1 | enable Example: Device> enable | Enables privileged EXEC mode. <ul style="list-style-type: none"> • Enter your password if prompted. |
| Step 2 | configure terminal Example: Device# configure terminal | Enters global configuration mode. |
| Step 3 | l2vpn vfi context <i>vfi-name</i> Example: Device(config)# l2vpn vfi context vpls1 | Establishes a Layer 2 VPN (L2VPN) virtual forwarding interface (VFI) between two or more separate networks and enters VFI configuration mode. |

| | Command or Action | Purpose |
|----------------|--|--|
| Step 4 | vpn id <i>vpn-id</i> Example: Device(config-vfi)# vpn id 100 | Specifies the VPN ID. |
| Step 5 | exit Example: Device(config-vfi)# exit | Exits VFI configuration mode and returns to global configuration mode. |
| Step 6 | interface <i>type number</i> Example: Device(config)# interface pseudowire 100 | Specifies an interface and enters interface configuration mode. |
| Step 7 | encapsulation mpls Example: Device(config-if)# encapsulation mpls | Specifies an encapsulation type for tunneling Layer 2 traffic over a pseudowire. |
| Step 8 | neighbor <i>ip-address vc-id</i> Example: Device(config-if)# neighbor 10.3.4.4 100 | Specifies the peer IP address and virtual circuit (VC) ID value of a Layer 2 VPN (L2VPN) pseudowire. |
| Step 9 | label <i>local-pseudowire-label remote-pseudowire-label</i> Example: Device(config-if)# label 301 17 | Configures an Any Transport over MPLS (AToM) static pseudowire connection by defining local and remote circuit labels. |
| Step 10 | control-word {include exclude} Example: Device(config-if)# control-word include | (Optional) Enables the Multiprotocol Label Switching (MPLS) control word in an AToM dynamic pseudowire connection. |
| Step 11 | exit Example: Device(config-if)# exit | Exits interface configuration mode and returns to global configuration mode. |

| | Command or Action | Purpose |
|----------------|--|---|
| Step 12 | bridge-domain <i>bd-id</i> Example: Device(config)# bridge-domain 24 | Specifies the bridge domain ID and enters bridge-domain configuration mode. |
| Step 13 | member vfi <i>vfi-name</i> Example: Device(config-bdomain)# member vfi vpls1 | Binds a service instance to a bridge domain instance. |
| Step 14 | end Example: Device(config-bdomain)# end | Exits bridge-domain configuration mode and returns to privileged EXEC mode. |

Configuring an Attachment Circuit for Static VPLS

SUMMARY STEPS

1. **enable**
2. **configure terminal**
3. **interface gigabitethernet** *slot/interface*
4. **service instance** *si-id* **ethernet**
5. **encapsulation dot1q** *vlan-id*
6. **rewrite ingress tag pop** *number* [symmetric]
7. **bridge-domain** *bd-id*
8. **end**

DETAILED STEPS

| | Command or Action | Purpose |
|---------------|--|---|
| Step 1 | enable Example: Device> enable | Enables privileged EXEC mode. <ul style="list-style-type: none"> • Enter your password if prompted. |

| | Command or Action | Purpose |
|---------------|---|---|
| Step 2 | configure terminal Example: Device# configure terminal | Enters global configuration mode. |
| Step 3 | interface gigabitethernet <i>slot/interface</i> Example: Device(config)# interface gigabitethernet 1/0/1 | Specifies an interface and enters interface configuration mode. <ul style="list-style-type: none"> • Ensure that the interfaces between the customer edge (CE) and provider edge (PE) devices that run Ethernet over MPLS (EoMPLS) are in the same subnet. All other interfaces and backbone devices do not need to be in the same subnet. |
| Step 4 | service instance <i>si-id</i> ethernet Example: Device(config-if)# service instance 100 ethernet | Configures an Ethernet service instance on an interface and enters service instance configuration mode. |
| Step 5 | encapsulation dot1q <i>vlan-id</i> Example: Device(config-if-srv)# encapsulation dot1q 200 | Defines the matching criteria to map 802.1Q frames ingress on an interface to the appropriate service instance. <ul style="list-style-type: none"> • Ensure that the interface on the adjoining CE device is on the same VLAN as this PE device. |
| Step 6 | rewrite ingress tag pop <i>number</i> [symmetric] Example: Device(config-if-srv)# rewrite ingress tag pop 1 symmetric | (Optional) Specifies the encapsulation adjustment to be performed on a frame ingressing a service instance and the tag to be removed from a packet. |
| Step 7 | bridge-domain <i>bd-id</i> Example: Device(config-if-srv)# bridge-domain 24 | (Optional) Binds a service instance or a MAC tunnel to a bridge domain instance. |
| Step 8 | end Example: Device(config-if-srv)# end | Exits service instance configuration mode and returns to privileged EXEC mode. |

Configuring an Attachment Circuit for Static VPLS: Alternate Configuration

SUMMARY STEPS

1. **enable**
2. **configure terminal**
3. **interface gigabitethernet *slot/interface***
4. **service instance *si-id* ethernet**
5. **encapsulation dot1q *vlan-id***
6. **rewrite ingress tag pop *number* [symmetric]**
7. **exit**
8. **exit**
9. **bridge-domain *bd-id***
10. **member *interface-type-number* service-instance *service-id* [split-horizon group *group-id*]**
11. **end**

DETAILED STEPS

| | Command or Action | Purpose |
|---------------|--|--|
| Step 1 | enable Example: Device> enable | Enables privileged EXEC mode. <ul style="list-style-type: none"> • Enter your password if prompted. |
| Step 2 | configure terminal Example: Device# configure terminal | Enters global configuration mode. |
| Step 3 | interface gigabitethernet <i>slot/interface</i> Example: Device(config)# interface gigabitethernet 1/0/1 | Specifies an interface and enters interface configuration mode. <ul style="list-style-type: none"> • Ensure that the interfaces between the customer edge (CE) and provider edge (PE) devices that are running Ethernet over MPLS (EoMPLS) are in the same subnet. All other interfaces and backbone devices do not need to be in the same subnet. |
| Step 4 | service instance <i>si-id</i> ethernet Example: Device(config-if)# service instance 10 ethernet | Specifies a service instance ID and enters service instance configuration mode. |

| | Command or Action | Purpose |
|----------------|---|--|
| Step 5 | encapsulation dot1q <i>vlan-id</i> Example: <pre>Device(config-if-srv)# encapsulation dot1q 200</pre> | Defines the matching criteria to map 802.1Q frames ingress on an interface to the appropriate service instance. <ul style="list-style-type: none"> • Ensure that the interface on the adjoining CE device is on the same VLAN as this PE device. |
| Step 6 | rewrite ingress tag pop <i>number</i> [symmetric] Example: <pre>Device(config-if-srv)# rewrite ingress tag pop 1 symmetric</pre> | (Optional) Specifies the encapsulation adjustment to be performed on a frame ingressing a service instance and the tag to be removed from a packet. |
| Step 7 | exit Example: <pre>Device(config-if-srv)# exit</pre> | Exits service instance configuration mode and returns to interface configuration mode. |
| Step 8 | exit Example: <pre>Device(config-if)# exit</pre> | Exits interface configuration mode and returns to global configuration mode. |
| Step 9 | bridge-domain <i>bd-id</i> Example: <pre>Device(config)# bridge-domain 100</pre> | Specifies the bridge domain ID and enters bridge-domain configuration mode. |
| Step 10 | member <i>interface-type-number</i> service-instance <i>service-id</i> [split-horizon group <i>group-id</i>] Example: <pre>Device(config-bdomain)# member gigabitethernet0/0/0 service-instance 1000</pre> | (Optional) Binds a service instance to a bridge domain instance. |
| Step 11 | end Example: <pre>Device(config-bdomain)# end</pre> | Exits bridge-domain configuration mode and returns to privileged EXEC mode. |

Configuring an MPLS-TP Tunnel for Static VPLS with TP

SUMMARY STEPS

1. **enable**
2. **configure terminal**
3. **interface Tunnel-tp** *number*
4. **no ip address**
5. **no keepalive**
6. **tp destination** *ip-address*
7. **bfd** *bfd-template*
8. **working-lsp**
9. **out-label** *number* **out-link** *number*
10. **lsp-number** *number*
11. **exit**
12. **protect-lsp**
13. **out-label** *number* **out-link** *number*
14. **in-label** *number*
15. **lsp-number** *number*
16. **exit**
17. **exit**
18. **interface** *type number*
19. **ip address** *ip-address ip-mask*
20. **mpls tp link** *number tx-mac tx-mac-address*
21. **end**

DETAILED STEPS

| | Command or Action | Purpose |
|---------------|--|---|
| Step 1 | enable Example: Device> enable | Enables privileged EXEC mode. <ul style="list-style-type: none"> • Enter your password if prompted. |
| Step 2 | configure terminal Example: Device# configure terminal | Enters global configuration mode. |

| | Command or Action | Purpose |
|----------------|---|--|
| Step 3 | interface Tunnel-tp <i>number</i> Example: <pre>Device(config)# interface Tunnel-tp 4</pre> | Configures a Multiprotocol Label Switching (MPLS) transport profile tunnel and enters interface configuration mode. <ul style="list-style-type: none"> • Use the same interface as you configured for the pseudowire class. |
| Step 4 | no ip address Example: <pre>Device(config-if)# no ip address</pre> | Disables the IP address configuration. |
| Step 5 | no keepalive Example: <pre>Device(config-if)# no keepalive</pre> | Disables the keepalive configuration. |
| Step 6 | tp destination <i>ip-address</i> Example: <pre>Device(config-if)# tp destination 10.22.22.22</pre> | Configures the tunnel destination. |
| Step 7 | bfd <i>bfd-template</i> Example: <pre>Device(config-if)# bfd tp</pre> | Binds a single-hop Bidirectional Forwarding Detection (BFD) template to an interface. |
| Step 8 | working-lsp Example: <pre>Device(config-if)# working-lsp</pre> | Configures the working label switched path (LSP) and enters working interface configuration mode. |
| Step 9 | out-label <i>number</i> out-link <i>number</i> Example: <pre>Device(config-if-working)# out-label 16 out-link 100</pre> | Configures the out link and out label for the working LSP. |
| Step 10 | lsp-number <i>number</i> Example: <pre>Device(config-if-working)# lsp-number 0</pre> | Configures the ID number for the working LSP. |

| | Command or Action | Purpose |
|----------------|---|---|
| Step 11 | exit Example: Device(config-if-working)# exit | Exits working interface configuration mode and returns to interface configuration mode. |
| Step 12 | protect-lsp Example: Device(config-if)# protect-lsp | Enters protection configuration mode for the label switched path (LSP) and enters protect interface configuration mode. |
| Step 13 | out-label <i>number</i> out-link <i>number</i> Example: Device(config-if-protect)# out-label 11 out-link 500 | Configures the out link and out label for the protect LSP. |
| Step 14 | in-label <i>number</i> Example: Device(config-if-protect)# in-label 600 | Configures the in label for the protect LSP. |
| Step 15 | lsp-number <i>number</i> Example: Device(config-if-protect)# lsp-number 1 | Configures the ID number for the working protect LSP. |
| Step 16 | exit Example: Device(config-if-protect)# exit | Exits protect interface configuration mode and returns to interface configuration mode. |
| Step 17 | exit Example: Device(config-if)# exit | Exits interface configuration mode and returns to global configuration mode. |
| Step 18 | interface <i>type number</i> Example: Device(config-if)# interface GigabitEthernet 1/0 | Configures a interface and enters interface configuration mode. |

| | Command or Action | Purpose |
|----------------|---|---|
| Step 19 | ip address <i>ip-address ip-mask</i> Example: <pre>Device(config)# ip address 10.0.0.1 255.255.255.0</pre> | (Optional) Configures the IP address and mask if not using an IP-less core. |
| Step 20 | mpls tp link <i>number tx-mac tx-mac-address</i> Example: <pre>Device(config-if)# mpls tp link 10 tx-mac 0100.0c99.8877</pre> | Configures Multiprotocol Label Switching (MPLS) transport profile (TP) link parameters. |
| Step 21 | end Example: <pre>Device(config-if)# end</pre> | Exits interface configuration mode and returns to privileged EXEC mode. |

Configuration Examples for Virtual Private LAN Services

Example: Configuring 802.1Q Access Ports for Tagged Traffic from a CE Device

This example shows how to configure the tagged traffic:

```
Device(config)# interface GigabitEthernet 1/0/1
Device(config-if)# no ip address
Device(config-if)# negotiation auto
Device(config-if)# service instance 10 ethernet
Device(config-if-srv)# encapsulation dot1q 200
Device(config-if-srv)# bridge-domain 100
Device(config-if-srv)# end
```

Example: Configuring 802.1Q Access Ports for Tagged Traffic from a CE Device: Alternate Configuration

The following example shows how to configure the tagged traffic:

```
Device(config)# interface GigabitEthernet 1/0/1
Device(config-if)# no ip address
Device(config-if)# negotiation auto
Device(config-if)# service instance 10 ethernet
Device(config-if-srv)# encapsulation dot1q 200
Device(config-if-srv)# exit
Device(config-if)# exit
```

```
Device(config)# bridge-domain 100
Device(config-bdmain)# member gigabitethernet1/0/1 service-instance 1000
Device(config-bdmain)# end
```

Example: Configuring Access Ports for Untagged Traffic from a CE Device

The following example shows how to configure access ports for untagged traffic:

```
Device(config)# interface gigabitethernet1/0/0
Device(config-if)# no ip address
Device(config-if)# negotiation auto
Device(config-if)# service instance 10 ethernet
Device(config-if-srv)# encapsulation untagged
Device(config-if-srv)# bridge-domain 100
Device(config-if-srv)# end
```

The following example shows a virtual forwarding interface (VFI) configuration:

```
Device(config)# 12 vfi VPLSA manual
Device(config-vfi)# vpn id 110
Device(config-vfi)# neighbor 10.11.11.11 encapsulation mpls
Device(config-vfi)# neighbor 10.33.33.33 encapsulation mpls
Device(config-vfi)# neighbor 10.44.44.44 encapsulation mpls
Device(config-vfi)# bridge-domain 100
Device(config-vfi)# end
```

The following example shows a VFI configuration for hub and spoke.

```
Device(config)# 12 vfi VPLSA manual
Device(config-vfi)# vpn id 110
Device(config-vfi)# neighbor 10.9.9.9 encapsulation mpls
Device(config-vfi)# neighbor 10.12.12.12 encapsulation mpls
Device(config-vfi)# neighbor 10.33.33.33 encapsulation mpls no-split-horizon
Device(config-vfi)# bridge-domain 100
Device(config-vfi)# end
```

The output of the **show mpls 12transport vc** command displays various information related to a provide edge (PE) device. The VC ID in the output represents the VPN ID; the VC is identified by the combination of the destination address and the VC ID as shown in the command output. The output of the **show mpls 12transport vc detail** command displays detailed information about virtual circuits (VCs) on a PE device.

```
Device# show mpls 12transport vc 201
```

| Local intf | Local circuit | Dest address | VC ID | Status |
|------------|---------------|--------------|-------|--------|
| VFI test1 | VFI | 192.0.2.1 | 201 | UP |
| VFI test1 | VFI | 192.0.2.5 | 201 | UP |
| VFI test1 | VFI | 192.0.2.9 | 201 | UP |

The following sample output from the **show vfi** command displays the VFI status:

```
Device# show vfi VPLS-2
```

```
VFI name: VPLS-2, state: up
Local attachment circuits:
  Vlan2
Neighbors connected via pseudowires:
Peer Address    VC ID    Split-horizon
10.1.1.1        2        Y
10.4.4.2        2        Y
10.2.2.3        2        N
```

Example: Configuring Access Ports for Untagged Traffic from a CE Device: Alternate Configuration

The following example shows how to configure the untagged traffic.

```
Device(config)# interface GigabitEthernet4/4
Device(config-if)# no ip address
Device(config-if)# negotiation auto
Device(config-if)# service instance 10 ethernet
Device(config-if-srv)# encapsulation untagged
Device(config-if-srv)# exit
Device(config-if)# exit
Device(config)# bridge-domain 100
Device(config-bdmain)# member GigabitEthernet4/4 service-instance 10
Device(config-if-srv)# end
```

Example: Configuring Q-in-Q EFP

The following example shows how to configure the tagged traffic.

```
Device(config)# interface GigabitEthernet 1/0/2
Device(config-if)# no ip address
Device(config-if)# negotiate auto
Device(config-if)# service instance 10 ethernet
Device(config-if-srv)# encapsulation dot1q 200 second-dot1q 400
Device(config-if-srv)# bridge-domain 100
Device(config-if-srv)# end
```

Use the **show spanning-tree vlan** command to verify that the ports are not in a blocked state. Use the **show vlan id** command to verify that a specific port is configured to send and receive specific VLAN traffic.

Example: Configuring Q-in-Q in EFP: Alternate Configuration

The following example shows how to configure the tagged traffic:

```
Device(config)# interface GigabitEthernet4/4
Device(config-if)# no ip address
Device(config-if)# nonegotiate auto
Device(config-if)# service instance 10 ethernet
Device(config-if-srv)# encapsulation dot1q 200 second-dot1q 400
Device(config-if-srv)# exit
Device(config-if)# exit
Device(config)# bridge-domain 100
Device(config-bdmain)# member GigabitEthernet4/4 service-instance 1000
Device(config-bdmain)# end
```

Use the **show spanning-tree vlan** command to verify that the port is not in a blocked state. Use the **show vlan id** command to verify that a specific port is configured to send and receive a specific VLAN traffic.

Example: Configuring MPLS on a PE Device

The following example shows a global Multiprotocol Label Switching (MPLS) configuration:

```
Device(config)# mpls label protocol ldp
Device(config)# mpls ldp logging neighbor-changes
Device(config)# mpls ldp discovery hello holdtime 5
Device(config)# mpls ldp router-id Loopback0 force
```

The following sample output from the **show ip cef** command displays the Label Distribution Protocol (LDP) label assigned:

```
Device# show ip cef 192.168.17.7

192.168.17.7/32, version 272, epoch 0, cached adjacency to POS4/1
0 packets, 0 bytes
  tag information set
    local tag: 8149
    fast tag rewrite with P04/1, point2point, tags imposed: {4017}
  via 10.3.1.4, POS4/1, 283 dependencies
  next hop 10.3.1.4, POS4/1
  valid cached adjacency
  tag rewrite with P04/1, point2point, tags imposed: {4017}
```

Example: VFI on a PE Device

The following example shows a virtual forwarding instance (VFI) configuration:

```
Device(config)# 12 vfi vfi110 manual
Device(config-vfi)# vpn id 110
Device(config-vfi)# neighbor 172.16.10.2 4 encapsulation mpls
Device(config-vfi)# neighbor 10.16.33.33 encapsulation mpls
Device(config-vfi)# neighbor 198.51.100.44 encapsulation mpls
Device(config-vfi)# bridge-domain 100
Device(config-vfi)# end
```

The following example shows a VFI configuration for a hub-and-spoke configuration:

```
Device(config)# 12 vfi VPLSA manual
Device(config-vfi)# vpn id 110
Device(config-vfi)# neighbor 10.9.9.9 encapsulation mpls
Device(config-vfi)# neighbor 192.0.2.12 encapsulation mpls
Device(config-vfi)# neighbor 203.0.113.4 encapsulation mpls no-split-horizon
Device(config-vfi)# bridge-domain 100
Device(config-vfi)# end
```

The **show mpls 12transport vc** command displays information about the provider edge (PE) device. The **show mpls 12transport vc detail** command displays detailed information about the virtual circuits (VCs) on a PE device.

```
Device# show mpls 12transport vc 201
```

| Local intf | Local circuit | Dest address | VC ID | Status |
|------------|---------------|---------------|-------|--------|
| VFI test1 | VFI | 209.165.201.1 | 201 | UP |
| VFI test1 | VFI | 209.165.201.2 | 201 | UP |
| VFI test1 | VFI | 209.165.201.3 | 201 | UP |

The **show vfi vfi-name** command displays VFI status. The VC ID in the output represents the VPN ID; the VC is identified by the combination of the destination address and the VC ID as in the example below.

```
Device# show vfi VPLS-2

VFI name: VPLS-2, state: up
  Local attachment circuits:
    Vlan2
  Neighbors connected via pseudowires:
Peer Address      VC ID      Split-horizon
10.1.1.1          2          Y
10.1.1.2          2          Y
10.2.2.3          2          N
```

Example: VFI on a PE Device: Alternate Configuration

The following example shows how to configure a virtual forwarding interface (VFI) on a provider edge (PE) device:

```
Device(config)# l2vpn vfi context vfi110
Device(config-vfi)# vpn id 110
Device(config-vfi)# member 172.16.10.2 4 encapsulation mpls
Device(config-vfi)# member 10.33.33.33 encapsulation mpls
Device(config-vfi)# member 10.44.44.44 encapsulation mpls
Device(config-vfi)# exit
Device(config)# bridge-domain 100
Device(config-bdmain)# member vfi vfi110
Device(config-bdmain)# end
```

The following example shows how to configure a hub-and-spoke VFI configuration:

```
Device(config)# l2vpn vfi context VPLSA
Device(config-vfi)# vpn id 110
Device(config-vfi)# member 10.9.9.9 encapsulation mpls
Device(config-vfi)# member 172.16.10.2 4 encapsulation mpls
Device(config-vfi)# exit
Device(config)# bridge-domain 100
Device(config-bdmain)# member vfi VPLSA
Device(config-bdmain)# member GigabitEthernet0/0/0 service-instance 100
Device(config-bdmain)# member 10.33.33.33 10 encapsulation mpls
Device(config-bdmain)# end
```

The **show l2vpn atom vc** command displays information about the PE device. The command also displays information about Any Transport over MPLS (AToM) virtual circuits (VCs) and static pseudowires that are enabled to route Layer 2 packets on a device.

```
Device# show l2vpn atom vc

Local intf      Local circuit      Dest address      VC ID      Status
-----
Se5/0           FR DLCI 55         10.0.0.1          55         UP
AT4/0           ATM AAL5 0/100     10.0.0.1          100        UP
AT4/0           ATM AAL5 0/200     10.0.0.1          200        UP
AT4/0.300       ATM AAL5 0/300     10.0.0.1          300        UP
```

The **show l2vpn vfi** command displays the VFI status. The VC ID in the output represents the VPN ID; the VC is identified by the combination of the destination address and the VC ID as in the example below.

```
Device# show l2vpn vfi VPLS-2

Legend: RT= Route-target
```

Example: Full-Mesh VPLS Configuration

```
VFI name: serviceCore1, State: UP, Signaling Protocol: LDP
VPN ID: 100, VPLS-ID: 9:10, Bridge-domain vlan: 100
RD: 9:10, RT: 10.10.10.10:150
Pseudo-port Interface: Virtual-Ethernet1000
```

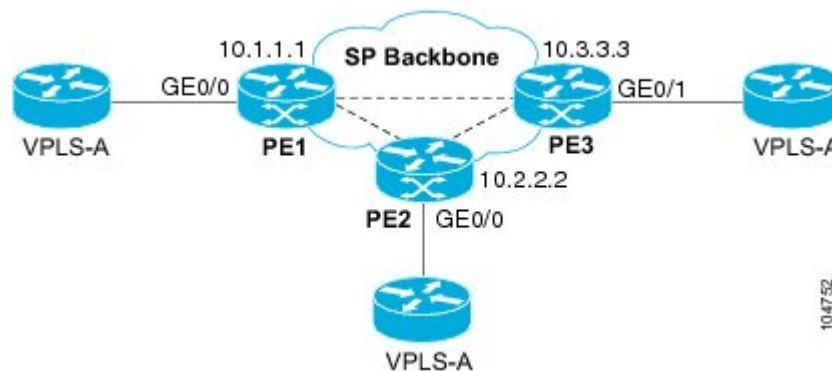
Neighbors connected via pseudowires:

| Interface | Peer Address | VC ID | Discovered Router ID | Next Hop |
|-----------|--------------|-------|----------------------|----------|
| Pw2000 | 10.0.0.1 | 10 | 10.0.0.1 | 10.0.0.1 |
| Pw2001 | 10.0.0.2 | 10 | 10.1.1.2 | 10.0.0.2 |
| Pw2002 | 10.0.0.3 | 10 | 10.1.1.3 | 10.0.0.3 |
| Pw5 | 10.0.0.4 | 10 | - | 10.0.0.4 |

Example: Full-Mesh VPLS Configuration

In a full-mesh configuration, each provider edge (PE) device creates a multipoint-to-multipoint forwarding relationship with all other PE devices in the Virtual Private LAN Services (VPLS) domain using a virtual forwarding interface (VFI). An Ethernet or a VLAN packet received from the customer network can be forwarded to one or more local interfaces and/or emulated virtual circuits (VCs) in the VPLS domain. To avoid a broadcast packet loop in the network, packets received from an emulated VC cannot be forwarded to any emulated VC in the VPLS domain on a PE device. Ensure that Layer 2 split horizon is enabled to avoid a broadcast packet loop in a full-mesh network.

Figure 2: Full-Mesh VPLS Configuration



PE 1 Configuration

The following examples shows how to create virtual switch instances (VSIs) and associated VCs:

```
12 vfi PE1-VPLS-A manual
   vpn id 100
   neighbor 10.2.2.2 encapsulation mpls
   neighbor 10.3.3.3 encapsulation mpls
   bridge domain 100
!
interface Loopback 0
 ip address 10.1.1.1 255.255.0.0
```

The following example shows how to configure the customer edge (CE) device interface (there can be multiple Layer 2 interfaces in a VLAN):

```
interface FastEthernet0/0
 no ip address
 negotiation auto
```

```

service instance 10 ethernet
encapsulation dot1q 200
bridge-domain 100

```

PE 2 Configuration

The following example shows how to create VSIs and associated VCs.

```

12 vfi PE2-VPLS-A manual
  vpn id 100
  neighbor 10.1.1.1 encapsulation mpls
  neighbor 10.3.3.3 encapsulation mpls
  bridge domain 100
!
interface Loopback 0
  ip address 10.2.2.2 255.255.0.0

```

The following example shows how to configure the CE device interface (there can be multiple Layer 2 interfaces in a VLAN):

```

interface FastEthernet0/0
  no ip address
  negotiation auto
  service instance 10 ethernet
  encapsulation dot1q 200
  bridge-domain 100

```

PE 3 Configuration

The following example shows how to create VSIs and associated VCs:

```

12 vfi PE3-VPLS-A manual
  vpn id 112
  neighbor 10.1.1.1 encapsulation mpls
  neighbor 10.2.2.2 encapsulation mpls
  bridge domain 100
!
interface Loopback 0
  ip address 10.3.3.3 255.255.0.0

```

The following example shows how to configure the CE device interface (there can be multiple Layer 2 interfaces in a VLAN).

```

interface FastEthernet0/1
  no ip address
  negotiation auto
  service instance 10 ethernet
  encapsulation dot1q 200
  bridge-domain 100
!

```

The following sample output from the **show mpls l2 vc** command provides information about the status of the VC:

VPLS-A# **show mpls l2 vc**

| Local intf | Local circuit | Dest address | VC ID | Status |
|----------------|---------------|--------------|-------|--------|
| VFI PE1-VPLS-A | VFI | 10.2.2.2 | 100 | UP |
| VFI PE1-VPLS-A | VFI | 10.3.3.3 | 100 | UP |

```
VPLS-A# show vfi PE1-VPLS-A
VFI name: VPLSA, state: up
  Local attachment circuits:
    Vlan200
  Neighbors connected via pseudowires:
    10.2.2.2  10.3.3.3
```

```
VPLS-A# show mpls l2transport vc detail

Local interface: VFI PE1-VPLS-A up
  Destination address: 10.2.2.2, VC ID: 100, VC status: up
    Tunnel label: imp-null, next hop point2point
      Output interface: PO3/4, imposed label stack {18}
  Create time: 3d15h, last status change time: 1d03h
  Signaling protocol: LDP, peer 10.2.2.2:0 up
    MPLS VC labels: local 18, remote 18
    Group ID: local 0, remote 0
    MTU: local 1500, remote 1500
    Remote interface description:
  Sequencing: receive disabled, send disabled
  VC statistics:
    packet totals: receive 0, send 0
    byte totals: receive 0, send 0
    packet drops: receive 0, send 0
```

In a full-mesh configuration, each provider edge (PE) router creates a multipoint-to-multipoint forwarding relationship with all other PE routers in the Virtual Private LAN Services (VPLS) domain using a virtual forwarding interface (VFI). An Ethernet or virtual LAN (VLAN) packet received from the customer network can be forwarded to one or more local interfaces and/or emulated virtual circuits (VCs) in the VPLS domain. To avoid broadcasted packets looping in the network, no packet received from an emulated VC can be forwarded to any emulated VC of the VPLS domain on a PE router. That is, Layer 2 split horizon should always be enabled as the default in a full-mesh network.

PE 1 Configuration

The following example shows how to create virtual switch instances (VSIs) and associated VCs and to configure the CE device interface (there can be multiple Layer 2 interfaces in a VLAN):

```
interface gigabitethernet 1/0/0
 service instance 100 ethernet
  encapsulation dot1q 100
  no shutdown
!
l2vpn vfi context PE1-VPLS-A
 vpn id 100
 neighbor 10.2.2.2 encapsulation mpls
 neighbor 10.3.3.3 encapsulation mpls
!
bridge-domain 100
 member gigabitethernet1/0/0 service-instance 100
 member vfi PE1-VPLS-A
```

PE 2 Configuration

The following example shows how to create VSIs and associated VCs and to configure the CE device interface (there can be multiple Layer 2 interfaces in a VLAN):

```
interface gigabitethernet 1/0/0
 service instance 100 ethernet
  encapsulation dot1q 100
  no shutdown
!
l2vpn vfi context PE2-VPLS-A
 vpn id 100
 neighbor 10.1.1.1 encapsulation mpls
 neighbor 10.3.3.3 encapsulation mpls
!
bridge-domain 100
 member gigabitethernet1/0/0 service-instance 100
 member vfi PE2-VPLS-A
```

PE 3 Configuration

The following example shows how to create of the VSIs and associated VCs and to configure the CE device interface (there can be multiple Layer 2 interfaces in a VLAN):

```
interface gigabitethernet 1/0/0
 service instance 100 ethernet
  encapsulation dot1q 100
  no shutdown
!
l2vpn vfi context PE3-VPLS-A
 vpn id 100
 neighbor 10.1.1.1 encapsulation mpls
 neighbor 10.2.2.2 encapsulation mpls
!
bridge-domain 100
 member gigabitethernet1/0/0 service-instance 100
 member vfi PE3-VPLS-A
```

The following sample output from the **show mpls l2 vc** command provides information on the status of the VC:

Device# **show mpls l2 vc**

| Local intf | Local circuit | Dest address | VC ID | Status |
|------------|---------------|--------------|-------|--------|
| ----- | ----- | ----- | ----- | ----- |

```

VFI PE3-VPLS-A   VFI          10.2.2.2      100      UP
VFI PE3-VPLS-A   VFI          10.3.3.3      100      UP

```

The following sample output from the **show l2vpn vfi** command provides information about the VFI:

```

Device# show l2vpn vfi VPLS-2

Legend: RT= Route-target

VFI name: serviceCore1, State: UP, Signaling Protocol: LDP
VPN ID: 100, VPLS-ID: 9:10, Bridge-domain vlan: 100
RD: 9:10, RT: 10.10.10.10:150
Pseudo-port Interface: Virtual-Ethernet1000

Neighbors connected via pseudowires:
Interface      Peer Address      VC ID      Discovered Router ID  Next Hop
-----
Pw2000         10.0.0.1          10         10.0.0.1              10.0.0.1
Pw2001         10.0.0.2          10         10.1.1.2              10.0.0.2
Pw2002         10.0.0.3          10         10.1.1.3              10.0.0.3
Pw5            10.0.0.4          10         -                     10.0.0.4

```

The following sample output from the **show l2vpn atom vc** command provides information on the virtual circuits:

```

Device# show l2vpn atom vc

Local intf      Local circuit      Dest address      VC ID      Status
-----
Se5/0           FR DLCI 55         10.0.0.1          55         UP
AT4/0           ATM AAL5 0/100     10.0.0.1          100        UP
AT4/0           ATM AAL5 0/200     10.0.0.1          200        UP
AT4/0.300       ATM AAL5 0/300     10.0.0.1          300        UP

```

Feature Information for Configuring Virtual Private LAN Services

The following table provides release information about the feature or features described in this module. This table lists only the software release that introduced support for a given feature in a given software release train. Unless noted otherwise, subsequent releases of that software release train also support that feature.

Use Cisco Feature Navigator to find information about platform support and Cisco software image support. To access Cisco Feature Navigator, go to www.cisco.com/go/cfn. An account on Cisco.com is not required.

Table 1: Feature Information for Configuring Virtual Private LAN Services

| Feature Name | Releases | Feature Information |
|-------------------------------------|---------------------------------------|---|
| Virtual Private LAN Services (VPLS) | 15.2(1)S Cisco IOS XE Release 3.5S | This feature enables you to configure dynamic Virtual Private LAN Services (VPLS). VPLS is a class of VPN that supports the connection of multiple sites in a single bridged domain over a managed IP/MPLS network. In Cisco IOS XE Release 3.5S, this feature was introduced on the Cisco ASR 1000 Series Aggregation Services Routers and Cisco ASR 903 Series Aggregation Services Routers. |

| Feature Name | Releases | Feature Information |
|---------------------------|---------------------------|---|
| L2VPN Protocol-Based CLIs | Cisco IOS XE Release 3.7S | In Cisco IOS XE Release 3.7S, the L2VPN Protocol-Based CLIs feature was introduced. This feature provides a set of processes and an improved infrastructure for developing and delivering Cisco IOS software on various Cisco platforms. This feature introduces new commands and modifies or replaces existing commands to achieve a consistent functionality across Cisco platforms and provide cross-Operating System support. |
| Static VPLS over MPLS-TP | Cisco IOS XE Release 3.6S | This features enables static VPLS to use MPLS Transport Profile. In Cisco IOS XE Release 3.6S, this feature was introduced on the Cisco ASR 903 Series Aggregation Services Routers. |

