



Load Balancing Application Flows Using Deep Packet Inspection Algorithm

The Deep Packet Inspection (DPI) algorithm helps in identification of application flows to facilitate detailed inspection of packets. The DPI algorithm deeply inspects the packets and therefore helps the service provider identify efficient ways to share bandwidth among parallel ethernet interfaces.

- [Finding Feature Information, on page 1](#)
- [Information About Load Balancing Using Deep Packet Inspection Algorithm, on page 1](#)
- [How to Configure Load Balancing Using Deep Packet Inspection, on page 4](#)
- [How to Configure Load Balancing Using Deep Packet Inspection, on page 5](#)
- [Verifying the Configuration of Load Balancing for Tunnel-Based and Tunnel-Less Packets, on page 6](#)
- [Additional References, on page 6](#)
- [Feature Information for Load Balancing with DPI Algorithm, on page 7](#)

Finding Feature Information

Your software release may not support all the features documented in this module. For the latest caveats and feature information, see [Bug Search Tool](#) and the release notes for your platform and software release. To find information about the features documented in this module, and to see a list of the releases in which each feature is supported, see the feature information table at the end of this module.

Use Cisco Feature Navigator to find information about platform support and Cisco software image support. To access Cisco Feature Navigator, go to www.cisco.com/go/cfn. An account on Cisco.com is not required.

Information About Load Balancing Using Deep Packet Inspection Algorithm

Packet Inspection and Identification Using Hash Value

The DPI algorithm performs deep inspection of packets to generate a unique hash value that helps in identification of packets that flow into parallel links. This helps in effective sharing of bandwidth among subscribers.

Preserve Key Control Configuration

If you choose to remove the DPI configurations, you can do that using the command **no port-channel load-balance-hash-algo dpi algorithm** command. This will remove all the DPI tunnel and key-control configurations.

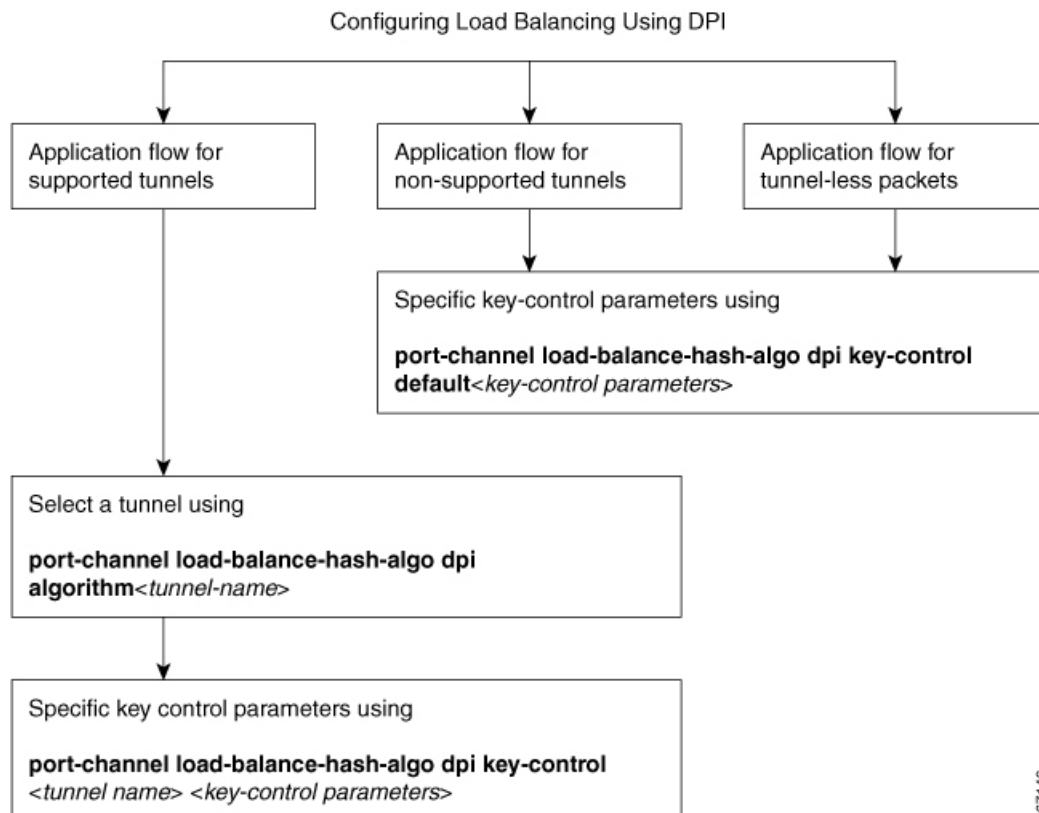
Support for Tunnel and Tunnel-Less Packets

The DPI algorithm is supported for the following tunnels:

- GRE
 - IPsec
 - IPinIP
 - VxLAN
- In addition to supporting the above mentioned tunnels, DPI can also be performed for tunnel-less packets using **port-channel load-balance-hash-algo dpi key-control default** command.

When you configure load balancing using DPI you can specify a specific tunnel using the **port-channel load-balance-hash-algo dpi algorithm <tunnel-name>** command. If you prefer to configure DPI for all the tunnels, use the **port-channel load-balance-hash-algo dpi algorithm** command without a tunnel name. This configures DPI for all the tunnels and port-channels.

Figure 1: Configuring Load Balancing Using DPI



367149

Key-Control Parameters for Hashing at Granular Level

You can configure the key-control parameters required for calculating the hash value for packets of a specific tunnel. These key-control parameters help you define load balancing at a granular level for all the active links.

Type of Tunnel	Key-Control Parameter Set 1	Key-Control Parameter Set 2	Key-Control Parameter Set 3	Key-Control Parameter 4
default	outer-dst-ip outer-src-dst-ip outer-src-ip	ignore-outer-port outer-dst-port outer-src-dst-port outer-src-port		
tunnel-ipinip	outer-dst-ip outer-src-dst-ip outer-src-ip	ignore-inner-ip inner-dst-ip inner-src-dst-ip inner-src-ip inner-dst-ip inner-src-dst-ip inner-src-ip	ignore-inner-port inner-dst-port inner-src-dst-port inner-src-port inner-dst-port inner-src-dst-port inner-src-port	
tunnel-gre	outer-dst-ip outer-src-dst-ip outer-src-ip	ignore-inner-ip inner-dst-ip inner-src-dst-ip inner-src-ip	ignore-inner-port inner-dst-port inner-src-dst-port inner-src-port	
tunnel-ipsec	ignore-outer-ip outer-dst-ip outer-src-dst-ip outer-src-ip			
tunnel-vxlan	ignore-outer-ip outer-dst-ip outer-src-dst-ip outer-src-ip	ignore-outer-port outer-dst-port outer-src-dst-port outer-src-port	ignore-inner-mac inner-dst-mac inner-src-dst-mac inner-src-mac	ignore-inner-vlan inner-vlan
tunnel-l2tp	ignore-outer-ip outer-dst-ip outer-src-dst-ip outer-src-ip	ignore-outer-port outer-dst-port outer-src-dst-port outer-src-port	ignore-inner-ip inner-dst-ip inner-src-dst-ip inner-src-ip	ignore-inner-port inner-dst-port inner-src-dst-port inner-src-port

Default Key-Control Parameters for Tunnels

It is optional to have key-control parameters configured for the tunnels or tunnel-less traffic. If key-control parameters are not configured, default key-control parameters are applied for both tunnel and tunnel-less traffic.

Table 1:

Type of Tunnel	Default Key-Control Parameter Set 1	Default Key-Control Parameter Set 2	Default Key-Control Parameter Set 3	Default Key-Control Parameter Set 4
default	outer-dst-ip	ignore-outer-port		
tunnel-ipinip	outer-dst-ip	ignore-inner-ip	ignore-inner-port	
tunnel-gre	outer-src-dst-ip	ignore-inner-ip	ignore-inner-port	
tunnel-ipsec	ignore-outer-ip			
tunnel-vxlan	ignore-outer-ip	ignore-outer-port	ignore-inner-mac	ignore-inner-vlan
tunnel-l2tp	ignore-outer-ip	ignore-outer-port	ignore-inner-ip	ignore-inner-port

How to Configure Load Balancing Using Deep Packet Inspection

Configuring Load Balancing Using Deep Packet Inspection for Tunnel-Based Flow

```
enable
configure terminal
port-channel load-balance-hash-algo dpi algorithm <tunnelname>
port-channel load-balance-hash-algo dpi key-control <tunnel-name> <key-control variables>
end
```

Examples for Configuring Load Balancing Using for Tunnel-Based Flow

Example: Configuring DPI for IPinIP Tunnel

```
enable
configure terminal
(config)# port-channel load-balance-hash-algorithm dpi tunnel-ipinip
```

Example: Configuring DPI for IPinIP Tunnel with Key-Control Parameter

```
enable
configure terminal
(config)# port-channel load-balance-hash-algorithm dpi keycontrol tunnel-ipinip
outer-src-dst-ip ignore-inner-ip
ignore-inner-port
```

Example: Configuring DPI for GRE Tunnel

```
enable
configure terminal
port-channel load-balance-hash-algorithm dpi tunnel-gre
end
```

Example: Configuring DPI for GRE Tunnel with the Key-Control Parameter

```
enable
configure terminal
port-channel load-balance-hash-algorithm dpi key-control tunnel-gre outer-src-dst-ip
ignore-inner-ip ignore-inner-
port
end
```

Example: Configuring DPI for IPsec Tunnel

```
enable
configure terminal
port-channel load-balance-hash-algorithm dpi tunnel-ipsec
end
```

Example: Configuring DPI for IPsec Tunnel with the Key-Control Parameter

```
enable
configure terminal
port-channel load-balance-hash-algorithm dpi key-control keycontrol tunnel-ipsec
ignore-outer-ip
end
```

How to Configure Load Balancing Using Deep Packet Inspection

Configuring Load Balancing Using Deep Packet Inspection for Tunnel-Less Packets

```
enable
configure terminal
port-channel load-balance-hash-algorithm dpi key-control default <key-control variables>
end
```

Examples for Configuring Load Balancing Using for Tunnel-Less Packets

Example: Configuring DPI for Load Balancing Tunnel-Less Packets

```
enable
configure terminal
port-channel load-balance-hash-algorithm dpi key-control default outer-src-dst-ip
ignore-outer-port
end
```

Verifying the Configuration of Load Balancing for Tunnel-Based and Tunnel-Less Packets

Verifying DPI for Tunnel-Based and Tunnel-Less Packets

Use the **show etherchannel load-balancing** command to verify that load balancing configuration is successful

```
Router# show etherchannel load-balancing
EtherChannel Load-Balancing Method:
Global LB Method: flow-based
LB Algo type: Deep packet inspection
Enabled Tunnel Types and Associated Key-Controls
tunnel-ipinip outer-src-dst-ip inner-src-dst-ip innersrc-
dst-port
default outer-src-dst-ip ignore-outer-port
Port-Channel: LB Method
Port-channell : flow-based (Deep
packet inspection)
```

Additional References

Related Documents

Related Topic	Document Title
Cisco IOS commands	Cisco IOS Master Commands List, All Releases

MIBs

MIB	MIBs Link
No new or modified MIBs are supported by this feature, and support for existing MIBs has not been modified by this feature.	To locate and download MIBs for selected platforms, Cisco IOS releases, and feature sets, use Cisco MIB Locator found at the following URL: http://www.cisco.com/go/mibs

Technical Assistance

Description	Link
The Cisco Support and Documentation website provides online resources to download documentation, software, and tools. Use these resources to install and configure the software and to troubleshoot and resolve technical issues with Cisco products and technologies. Access to most tools on the Cisco Support and Documentation website requires a Cisco.com user ID and password.	http://www.cisco.com/cisco/web/support/index.html

Feature Information for Load Balancing with DPI Algorithm

The following table provides release information about the feature or features described in this module. This table lists only the software release that introduced support for a given feature in a given software release train. Unless noted otherwise, subsequent releases of that software release train also support that feature.

Use Cisco Feature Navigator to find information about platform support and Cisco software image support. To access Cisco Feature Navigator, go to www.cisco.com/go/cfn. An account on Cisco.com is not required.

Table 2: Feature Information for Load Balancing Using DPI Algorithm

Feature Name	Releases	Feature Information
Load Balancing Application Flows Using Deep Packet Inspection	Cisco IOS XE Gibraltar 16.10.1.	<p>The Deep Packet Inspection (DPI) helps in identification of application flows to facilitate detailed inspection of packets. The DPI algorithm deeply inspects the packets and therefore helps the service provider identify efficient ways to share bandwidth among parallel Ethernet interfaces.</p> <p>The following commands were modified:</p> <pre>port-channel load-balance-hash-algorithm dpi algorithm. . port-channel load-balance-hash-algorithm dpi key-control. .</pre>

