



CEF Overview

Last Updated: October 28, 2011

This module contains an overview of the Cisco Express Forwarding feature. Cisco Express Forwarding is an advanced Layer 3 IP switching technology. It optimizes network performance and scalability for all kinds of networks: those that carry small amounts of traffic and those that carry large amounts of traffic in complex patterns, such as the Internet and networks characterized by intensive web-based applications or interactive sessions.

- [Finding Feature Information, page 1](#)
- [Information About CEF, page 1](#)
- [How to Configure CEF, page 9](#)
- [Configuration Examples for CEF, page 9](#)
- [Where to Go Next, page 9](#)
- [Additional References, page 9](#)
- [Feature Information for CEF, page 11](#)
- [Glossary, page 12](#)

Finding Feature Information

Your software release may not support all the features documented in this module. For the latest feature information and caveats, see the release notes for your platform and software release. To find information about the features documented in this module, and to see a list of the releases in which each feature is supported, see the Feature Information Table at the end of this document.

Use Cisco Feature Navigator to find information about platform support and Cisco software image support. To access Cisco Feature Navigator, go to www.cisco.com/go/cfn. An account on Cisco.com is not required.

Information About CEF

- [Cisco Platform Support for Central CEF and dCEF, page 2](#)
- [Cisco Express Forwarding Benefits, page 2](#)
- [Media Supported by CEF, page 3](#)
- [Main Components of CEF, page 3](#)



Americas Headquarters:
Cisco Systems, Inc., 170 West Tasman Drive, San Jose, CA 95134-1706 USA

- [FIB Overview, page 4](#)
- [CEF Adjacency Tables Overview, page 4](#)
- [Central CEF Mode Operation, page 5](#)
- [Distributed CEF Mode Operation, page 6](#)
- [CEF Features Enabled by Default, page 7](#)
- [Links for the CEF Features, page 8](#)

Cisco Platform Support for Central CEF and dCEF

Cisco Express Forwarding is enabled by default on most Cisco platforms running Cisco IOS software Release 12.0 or later. When Cisco Express Forwarding is enabled on a router, the Route Processor (RP) performs the express forwarding.

To find out if Cisco Express Forwarding is enabled on your platform, enter the **show ip cef** command. If Cisco Express Forwarding is enabled, you receive output that looks like this:

```
Router# show ip cef
Prefix          Next Hop          Interface
[... ]
10.2.61.8/24    192.168.100.1    FastEthernet1/0/0
                192.168.101.1    FastEthernet6/1
[... ]
```

If Cisco Express Forwarding is not enabled on your platform, the output for the **show ip cef** command looks like this:

```
Router# show ip cef
%CEF not running
```

Distributed Cisco Express Forwarding is enabled by default on the Catalyst 6500 series switch, the Cisco 7500 series router, and the Cisco 12000 Series Internet Router. When distributed Cisco Express Forwarding is enabled on your platform, the line cards perform the express forwarding.

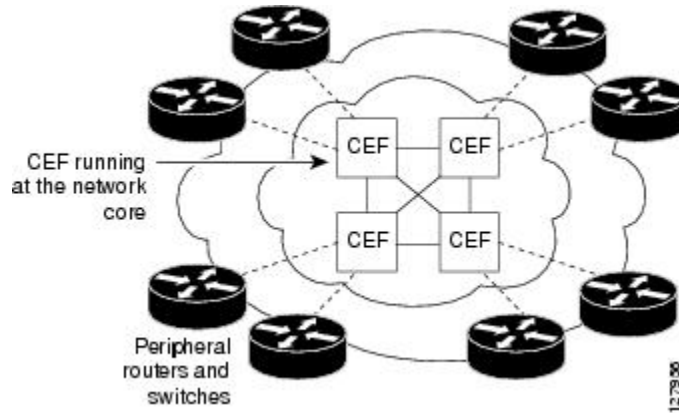
If Cisco Express Forwarding is not enabled on your platform, use the **ip cef** command to enable (central) Cisco Express Forwarding or the **ip cef distributed** command to enable distributed Cisco Express Forwarding.

Cisco Express Forwarding Benefits

- **Improved performance**--Cisco Express Forwarding is less CPU-intensive than fast switching route caching. As a result, more CPU processing power can be dedicated to Layer 3 services such as quality of service (QoS) and encryption.
- **Scalability**--Cisco Express Forwarding offers full switching capacity at each line card when distributed Cisco Express Forwarding mode is active. Distributed Cisco Express Forwarding is a distributed switching mechanism that scales linearly with the number of interface cards and the bandwidth installed in the router.
- **Resilience**--Cisco Express Forwarding offers an unprecedented level of switching consistency and stability in large dynamic networks. In dynamic networks, fast-switched cache entries are frequently invalidated by routing changes. These changes can cause traffic to be process-switched through use of the routing table, rather than fast switched through use of the route cache. Because the forwarding information base (FIB) lookup table contains all known routes that exist in the routing table, it eliminates the need for route cache maintenance and the steps involved with fast-switch or process-switch forwarding. Cisco Express Forwarding can switch traffic more efficiently than typical demand caching schemes.

You can use Cisco Express Forwarding in any part of a network. For example, the figure below shows Cisco Express Forwarding being run on routers at aggregation points at the core of a network where traffic levels are high and performance is critical.

Figure 1 Cisco Express Forwarding Example



Cisco Express Forwarding in platforms at the network core provides the performance and scalability that networks need to respond to continued growth and steadily increasing network traffic. Cisco Express Forwarding is a distributed switching mechanism that scales linearly with the number of interface cards and the bandwidth installed in the router.

Media Supported by CEF

Cisco Express Forwarding currently supports the following media:

- ATM/AAL5snap, ATM/AAL5mux, and ATM/AAL5nlpid
- Ethernet
- FDDI
- Frame Relay
- High-Level Data Link Control (HDLC)
- PPP
- Spatial Reuse Protocol (SRP)
- TokenRing
- Tunnels

Main Components of CEF

Information conventionally stored in a route cache is stored in several data structures for Cisco Express Forwarding switching. The data structures provide optimized lookup for efficient packet forwarding. The two main components of Cisco Express Forwarding operation are the forwarding information base (FIB) and the adjacency tables.

The FIB is conceptually similar to a routing table or information base. A router uses this lookup table to make destination-based switching decisions during Cisco Express Forwarding operation. The FIB is updated when changes occur in the network and contains all routes known at the time. For more information, see the FIB Overview section.

Adjacency tables maintain Layer 2 next-hop addresses for all FIB entries. For more information, see the [CEF Adjacency Tables Overview, page 4](#).

This separation of the reachability information (in the Cisco Express Forwarding table) and the forwarding information (in the adjacency table), provides a number of benefits:

- The adjacency table can be built separately from the Cisco Express Forwarding table, allowing both to be built without any packets being process switched.
- The MAC header rewrite used to forward a packet is not stored in cache entries, so changes in a MAC header rewrite string do not require invalidation of cache entries.

FIB Overview

Cisco Express Forwarding uses a FIB to make IP destination prefix-based switching decisions.

The FIB contains the prefixes from the IP routing table structured in a way that is optimized for forwarding. When routing or topology changes occur in the network, the IP routing table is updated, and those changes are reflected in the FIB. The FIB maintains next-hop address information based on the information in the IP routing table.

Because there is a one-to-one correlation between FIB entries and routing table entries, the FIB contains all known routes and eliminates the need for the route cache maintenance that is associated with switching paths such as those used in fast switching and optimum switching.

- [CEF FIB and Load Balancing, page 4](#)

CEF FIB and Load Balancing

Several paths can lead to a destination prefix. This occurs, for example, when a router is configured for simultaneous load balancing and redundancy. For each resolved path, the FIB contains a pointer for the adjacency corresponding to the next hop interface for that path.

CEF Adjacency Tables Overview

A node is said to be adjacent to another node if the node can be reached with a single hop across a link layer (Layer 2). Cisco Express Forwarding stores forwarding information (outbound interface and MAC header rewrite) for adjacent nodes in a data structure called the adjacency table. Cisco Express Forwarding uses adjacency tables to prepend Layer 2 addressing information to packets. The adjacency tables maintain Layer 2 next-hop addresses for all FIB entries.

The following sections provide additional information about adjacencies:

- [Adjacency Discovery, page 4](#)
- [Adjacency Types That Require Special Handling, page 5](#)
- [Unresolved Adjacency, page 5](#)

Adjacency Discovery

Each adjacency table is populated as adjacencies are discovered. Adjacencies are added to the table either through indirect manual configuration or dynamically--discovered through a mechanism like Address Resolution Protocol (ARP) or added through the use of a routing protocol, such as Border Gateway Protocol (BGP) or Open Shortest Path First (OSPF), which forms neighbor relationships. Each time an adjacency entry is created, a link-layer header for that adjacent node is computed and stored in the adjacency table.

The adjacency information is subsequently used for encapsulation during Cisco Express Forwarding switching of packets.

Adjacency Types That Require Special Handling

In addition to adjacencies associated with next hop interfaces (host-route adjacencies), other types of adjacencies are used to expedite switching when certain exception conditions exist. Prefixes requiring exception processing or special handling are cached with one of the special adjacencies listed in the table below.

Table 1 *Adjacency Types That Require Special Handling*

Packets of This Adjacency Type	Receive This Processing
Null adjacency	Packets destined for a Null0 interface are dropped. Null adjacency can be used as an effective form of access filtering.
Glean adjacency	When a router is connected to a multiaccess medium, the FIB table on the router maintains a prefix for the subnet rather than for the individual host prefixes. The subnet prefix points to a glean adjacency. A glean adjacency entry indicates that a particular next hop should be directly connected, but there is no MAC header rewrite information available. When the router needs to forward packets to a specific host on a subnet, Cisco Express Forwarding requests an ARP entry for the specific prefix, ARP sends the MAC address, and the adjacency entry for the host is built.
Punt adjacency	The router forwards packets that require special handling or packets sent by features that are not yet supported in conjunction with Cisco Express Forwarding switching paths to the next higher switching level for handling.
Discard adjacency	The router discards the packets.
Drop adjacency	The router drops the packets.

Unresolved Adjacency

When a link-layer header is prepended to a packet, the FIB requires the prepended header to point to an adjacency corresponding to the next hop. If an adjacency was created by the FIB and not discovered through a mechanism such as ARP, the Layer 2 addressing information is not known and the adjacency is considered incomplete or unresolved. Once the Layer 2 information is known, the packet is forwarded to the RP, and the adjacency is determined through ARP. Thus, the adjacency is resolved.

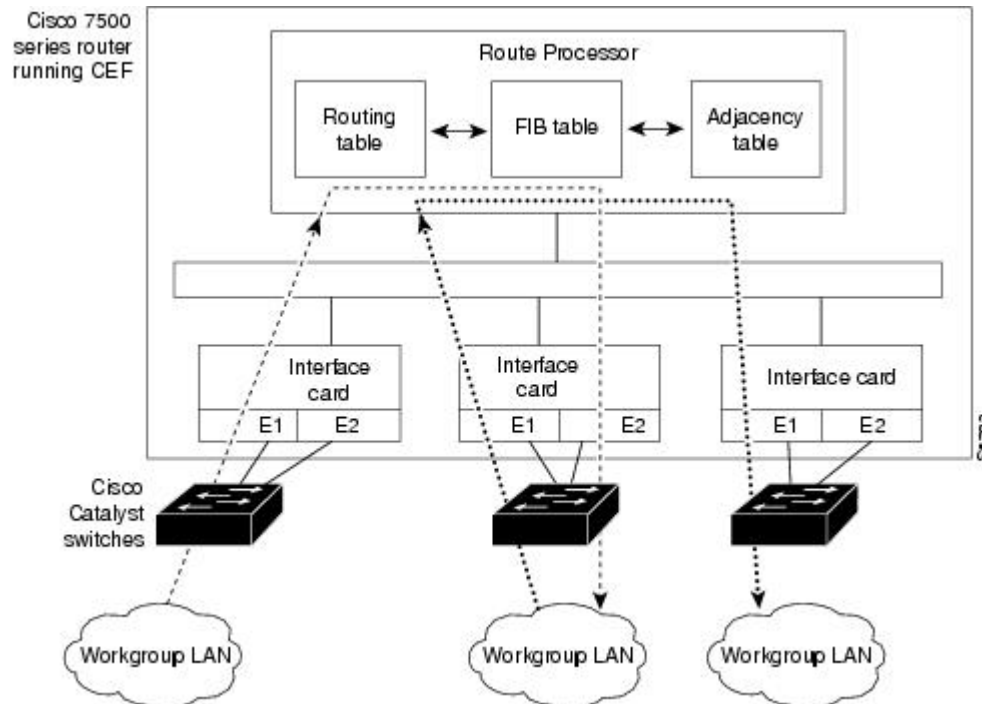
Central CEF Mode Operation

You can use central Cisco Express Forwarding mode when line cards are not available for Cisco Express Forwarding switching, when you need to use features not compatible with distributed Cisco Express

Forwarding switching, or when you are running on a nondistributed platform. When central Cisco Express Forwarding mode is enabled, the Cisco Express Forwarding FIB and adjacency tables reside on the RP, and the RP performs the express forwarding.

The figure below shows the relationship between the routing table, the FIB, and the adjacency table during central Cisco Express Forwarding mode operation. The Catalyst switches forward traffic from workgroup LANs to a Cisco 7500 series router on the enterprise backbone running central Cisco Express Forwarding. The RP performs the express forwarding.

Figure 2 Central Cisco Express Forwarding Mode Operation



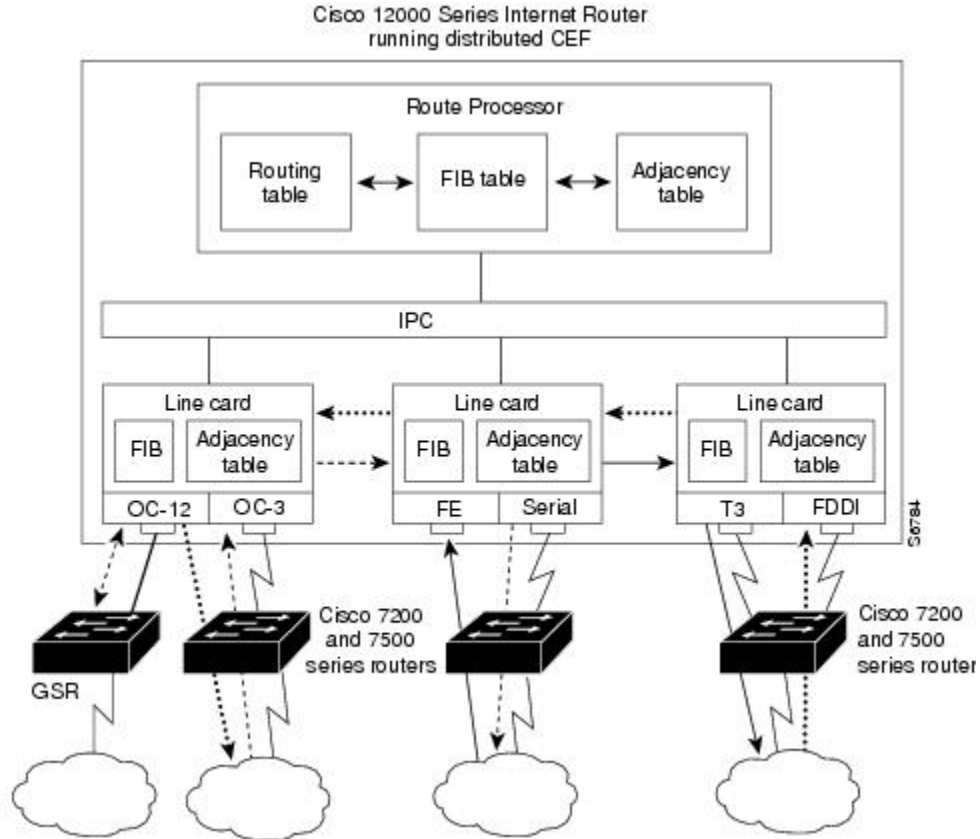
Distributed CEF Mode Operation

For additional scalability, Cisco Express Forwarding runs in the distributed Cisco Express Forwarding form on certain platforms by spreading processing tasks across two or more line cards. When distributed Cisco Express Forwarding mode is enabled, line cards maintain identical copies of the FIB and adjacency tables. The line cards perform the express forwarding between port adapters, relieving the RP of involvement in the switching operation, thus also enhancing system performance.

Distributed Cisco Express Forwarding uses an interprocess communication (IPC) mechanism to ensure synchronization of FIB tables and adjacency tables on the RP and line cards.

The figure below shows the relationship between the RP and line cards when distributed Cisco Express Forwarding mode is active.

Figure 3 Distributed Cisco Express Forwarding Mode Operation



In the Cisco 12000 Series Internet Router, shown in the figure above, the line cards perform the switching. In other routers where you can mix various types of cards in the same router, all cards might not support distributed Cisco Express Forwarding. When a line card that does not support distributed Cisco Express Forwarding receives a packet on one of these other routers, the line card forwards the packet to the next higher switching layer (the RP). This structure allows legacy interface processors to exist in the router with newer interface processors.



Note

The Cisco 12000 Series Internet routers operate only in distributed Cisco Express Forwarding mode.

CEF Features Enabled by Default

- Per-destination load balancing and the universal load sharing algorithm (see the "Configuring a Load-Balancing Scheme for Cisco Express Forwarding Traffic" module)
- Distributed tunnel switching (see the [GUID-3F346E72-7CAC-49A6-ABF7-FC5FF4CD359D](#))
- Multipoint generic routing encapsulation (GRE) tunnels (see the [CEF-Switched Multipoint GRE Tunnels](#), page 8)

- [CEF Distributed Tunnel Switching, page 8](#)
- [CEF-Switched Multipoint GRE Tunnels, page 8](#)

CEF Distributed Tunnel Switching

Cisco Express Forwarding supports distributed tunnel switching, such as that made possible by GRE tunnels. Distributed tunnel switching is enabled automatically when you enable Cisco Express Forwarding or distributed Cisco Express Forwarding. You do not perform any additional tasks to enable distributed tunnel switching once you enable Cisco Express Forwarding or distributed Cisco Express Forwarding.

CEF-Switched Multipoint GRE Tunnels

The Cisco Express Forwarding-Switched Multipoint GRE Tunnels feature enables Cisco Express Forwarding switching of IP traffic to and from multipoint GRE tunnels. Traffic can be forwarded to a prefix through a tunnel destination when both the prefix and the tunnel destination are specified by the application. GRE creates a virtual point-to-point link to other routers at remote points over an IP internetwork. GRE can encapsulate a wide variety of protocol type packets. By connecting multiprotocol subnetworks in a single-protocol backbone environment, IP tunneling using GRE allows network expansion across a single-protocol backbone environment.

Links for the CEF Features

The table below contains links to information about features that you can configure for use with Cisco Express Forwarding or distributed Cisco Express Forwarding operation.

Table 2 **Features to Configure for Cisco Express Forwarding or Distributed Cisco Express Forwarding Operation**

For Information on This Feature...	See the Following Document...
Configuring and verifying basic Cisco Express Forwarding operation	Configuring Basic Cisco Express Forwarding for Improved Performance, Scalability, and Resiliency in Dynamic Networks
Enabling or disabling Cisco Express Forwarding or distributed Cisco Express Forwarding switching and forwarding	Enabling or Disabling Cisco Express Forwarding or Distributed Cisco Express Forwarding to Customize Switching and Forwarding for Dynamic Networks
Changing your load-balancing scheme	Configuring a Load-Balancing Scheme for Cisco Express Forwarding Traffic
Refreshing or rebuilding adjacency or Cisco Express Forwarding tables	Configuring Epochs to Clear and Rebuild Cisco Express Forwarding and Adjacency Tables
Configuring Cisco Express Forwarding consistency checkers	Configuring Cisco Express Forwarding Consistency Checkers for Route Processors and Line Cards
Configuring network accounting for Cisco Express Forwarding	Configuring Cisco Express Forwarding Network Accounting

For Information on This Feature...**See the Following Document...**

Customizing the display of recorded Cisco Express Forwarding events

Customizing the Display of Recorded Cisco Express Forwarding Events

How to Configure CEF

There are no tasks for the Cisco Express Forwarding Overview module.

See the "Related Documents" section for links to configuration information for Cisco Express Forwarding features and services.

Configuration Examples for CEF

There are no configuration examples for the Cisco Express Forwarding Overview module.

See the "Related Documents" section for links to configuration information for Cisco Express Forwarding features and services.

Where to Go Next

See the "Related Documents" section for links to configuration information for Cisco Express Forwarding features and services.

Additional References

Related Documents

Related Topic	Document Title
Cisco IOS commands	Cisco IOS Master Commands List, All Releases
IP switching commands: complete command syntax, command modes, command history, defaults, usage guidelines, and examples.	<i>Cisco IOS IP Switching Command Reference</i>
Tasks for verifying Cisco Express Forwarding information on your router	Configuring Basic Cisco Express Forwarding for Improved Performance, Scalability, and Resiliency in Dynamic Networks
Tasks for enabling or disabling Cisco Express Forwarding or distributed Cisco Express Forwarding	Enabling or Disabling Cisco Express Forwarding or Distributed Cisco Express Forwarding to Customize Switching and Forwarding for Dynamic Networks

Related Topic	Document Title
Tasks for configuring a load-balancing scheme for Cisco Express Forwarding	Configuring a Load-Balancing Scheme for Cisco Express Forwarding Traffic
Tasks for configuring Cisco Express Forwarding consistency checkers	Configuring Cisco Express Forwarding Consistency Checkers for Route Processors and Line Cards
Tasks for configuring epochs for Cisco Express Forwarding tables	Configuring Epochs to Clear and Rebuild Cisco Express Forwarding and Adjacency Tables
Tasks for configuring and verifying Cisco Express Forwarding network accounting	Configuring Cisco Express Forwarding Network Accounting
Tasks for customizing the display of recorded Cisco Express Forwarding events	Customizing the Display of Recorded Cisco Express Forwarding Events
Verification steps for Cisco Express Forwarding switching	http://www.cisco.com/en/US/products/sw/iosswrel/ps1828/products_tech_note09186a00801e1e46.shtml How to Verify Cisco Express Forwarding Switching
Troubleshooting tips for incomplete adjacencies	http://www.cisco.com/en/US/tech/tk827/tk831/technologies_tech_note09186a0080094303.shtml Troubleshooting Incomplete Adjacencies with CEF
Description and use of the Cisco Express Forwarding consistency checkers available for the Cisco 7500 and 12000 series routers	Troubleshooting Prefix Inconsistencies with Cisco Express Forwarding
Information about troubleshooting Cisco Express Forwarding routing loops and suboptimal routing	Troubleshooting Cisco Express Forwarding Routing Loops
Causes of common Cisco Express Forwarding-related error messages on platforms running distributed Cisco Express Forwarding switching (Cisco 7500 series routers and Cisco 12000 Series Internet routers) and how to troubleshoot them	Troubleshooting Cisco Express Forwarding-Related Error Messages
Explanation of and troubleshooting information for the Cisco IOS software implementation of Layer 3 load balancing across multiple parallel links when Cisco Express Forwarding is used	Troubleshooting Load Balancing Over Parallel Links Using Cisco Express Forwarding
Troubleshooting guide for unicast IP routing on Catalyst 6500/6000 switches with Supervisor Engine 2, Policy Feature Card 2 (PFC2), or Multilayer Switch Feature Card 2 (MSFC2)	Troubleshoot Unicast IP Routing Involving CEF on Catalyst 6500/6000 Series Switches with a Supervisor Engine 2 and Running CatOS System Software
QoS features that require Cisco Express Forwarding	When Is CEF Required for Quality of Service

Standards

Standard	Title
No new or modified standards are supported by this feature, and support for existing standards has not been modified by this feature.	--

MIBs

MIB	MIBs Link
No new or modified MIBs are supported by this feature, and support for existing MIBs has not been modified by this feature.	To locate and download MIBs for selected platforms, Cisco IOS releases, and feature sets, use Cisco MIB Locator found at the following URL: http://www.cisco.com/go/mibs

RFCs

RFC	Title
RFC 1701	<i>Generic Route Encapsulation (GRE)</i>
RFC 2784	<i>Generic Routing Encapsulation (GRE)</i>
RFC 2890	<i>Key and Sequence Number Extensions to GRE</i>

Technical Assistance

Description	Link
The Cisco Support and Documentation website provides online resources to download documentation, software, and tools. Use these resources to install and configure the software and to troubleshoot and resolve technical issues with Cisco products and technologies. Access to most tools on the Cisco Support and Documentation website requires a Cisco.com user ID and password.	http://www.cisco.com/cisco/web/support/index.html

Feature Information for CEF

The following table provides release information about the feature or features described in this module. This table lists only the software release that introduced support for a given feature in a given software release train. Unless noted otherwise, subsequent releases of that software release train also support that feature.

Use Cisco Feature Navigator to find information about platform support and Cisco software image support. To access Cisco Feature Navigator, go to www.cisco.com/go/cfn. An account on Cisco.com is not required.

Table 3 *Feature Information for Cisco Express Forwarding Overview*

Feature Name	Releases	Feature Configuration Information
Cisco Express Forwarding-Switched Multipoint GRE Tunnels	12.2(8)T	This feature enables Cisco Express Forwarding switching of IP traffic to and from multipoint GRE tunnels. Prior to the introduction of this feature, only process switching was available for multipoint GRE tunnels.
CEF Support for IP Routing between IEEE 802.1Q vLANs	Cisco IOS XE Release 2.1 15.0(1)S	This feature was introduced on Cisco ASR 1000 Series Routers. This feature was integrated into Cisco IOS Release 15.0(1)S.

Glossary

adjacency --A relationship formed between selected neighboring routers and end nodes for the purpose of exchanging routing information. Adjacency is based upon the use of a common media segment by the routers and nodes involved.

Cisco Express Forwarding --A Layer 3 switching technology. Cisco Express Forwarding can also refer to central Cisco Express Forwarding mode, one of two modes of Cisco Express Forwarding operation. Cisco Express Forwarding enables a Route Processor to perform express forwarding. Distributed Cisco Express Forwarding is the other mode of Cisco Express Forwarding operation.

distributed Cisco Express Forwarding --A mode of Cisco Express Forwarding operation in which line cards (such as Versatile Interface Processor (VIP) line cards) maintain identical copies of the forwarding information base (FIB) and adjacency tables. The line cards perform the express forwarding between port adapters; this relieves the Route Switch Processor of involvement in the switching operation.

FIB --forwarding information base. A component of Cisco Express Forwarding that is conceptually similar to a routing table or information base. The router uses the FIB lookup table to make destination-based switching decisions during Cisco Express Forwarding operation. The router maintains a mirror image of the forwarding information in an IP routing table.

GRE --generic routing encapsulation. A tunneling protocol developed by Cisco that enables encapsulation of a wide variety of protocol packet types inside IP tunnels, creating a virtual point-to-point link to Cisco routers at remote points over an IP internetwork. By connecting multiprotocol subnetworks in a single-protocol backbone environment, IP tunneling using GRE allows the expansion of a network across a single-protocol backbone environment.

IPC --interprocess communication. The mechanism that enables the distribution of Cisco Express Forwarding tables from the Route Switch Processor (RSP) to the line card when the router is operating in distributed Cisco Express Forwarding mode.

label disposition --The removal of Multiprotocol Label Switching (MPLS) headers at the edge of a network. In MPLS label disposition, packets arrive on a router as MPLS packets and, with the headers removed, are transmitted as IP packets.

label imposition --The action of putting a label on a packet.

LER --label edge router. A router that performs label imposition.

LFIB --label forwarding information base. The data structure used by switching functions to switch labeled packets.

LIB --label information base. A database used by a label switch router (LSR) to store labels learned from other LSRs, as well as labels assigned by the local LSR.

line card --A general term for an interface processor that can be used in various Cisco products. For example, a Versatile Interface Processor (VIP) is a line card for the Cisco 7500 series router.

LSP --label switched path. A sequence of hops (Router 0...Router n). A packet travels from R0 to Rn by means of label switching mechanisms. An LSP can be chosen dynamically, based on normal routing mechanisms, or it can be configured manually.

LSR --label switch router. A Layer 3 router that forwards a packet based on the value of a label encapsulated in the packet.

MPLS --Multiprotocol Label Switching. An emerging industry standard for the forwarding of packets along the normal routing paths (sometimes called MPLS hop-by-hop forwarding).

prefix --The network address portion of an IP address. A prefix is specified by a network and mask and is generally represented in the format network/mask. The mask indicates which bits are the network bits. For example, 1.0.0.0/16 means that the first 16 bits of the IP address are masked, making them the network bits. The remaining bits are the host bits. In this example, the network number is 10.0.

RIB --Routing Information Base. A central repository of routes that contains Layer 3 reachability information and destination IP addresses or prefixes. The RIB is also known as the routing table.

RP --Route Processor. The processor module in the Cisco 7000 series routers that contains the CPU, system software, and most of the memory components that are used in the router. It is sometimes called a supervisory processor.

RSP --Route Switch Processor. The processor module used in the Cisco 7500 series routers that integrates the functions of the Route Processor (RP) and the Switch Processor (SP).

SP --Switch Processor. The Cisco 7000-series processor module that acts as the administrator for all CxBus activities. It is sometimes called a CiscoBus controller.

VIP --Versatile Interface Processor. An interface card used in Cisco 7000 and Cisco 7500 series routers. The VIP provides multilayer switching and runs Cisco IOS.

VPN --Virtual Private Network. A router configuration that enables IP traffic to use tunneling to travel securely over a public TCP/IP network.

VRF --A Virtual Private Network (VPN) routing/forwarding instance. A VRF consists of an IP routing table, a derived forwarding table, a set of interfaces that use the forwarding table, and a set of rules and routing protocols that determine what goes into the forwarding table. In general, a VRF includes the routing information that defines a customer VPN site that is attached to a PE router.

Cisco and the Cisco logo are trademarks or registered trademarks of Cisco and/or its affiliates in the U.S. and other countries. To view a list of Cisco trademarks, go to this URL: www.cisco.com/go/trademarks. Third-party trademarks mentioned are the property of their respective owners. The use of the word partner does not imply a partnership relationship between Cisco and any other company. (1110R)

Any Internet Protocol (IP) addresses and phone numbers used in this document are not intended to be actual addresses and phone numbers. Any examples, command display output, network topology diagrams,

and other figures included in the document are shown for illustrative purposes only. Any use of actual IP addresses or phone numbers in illustrative content is unintentional and coincidental.

© 2011 Cisco Systems, Inc. All rights reserved.