



BGP Link Bandwidth

Last Updated: April 13, 2012

The BGP (Border Gateway Protocol) Link Bandwidth feature is used to advertise the bandwidth of an autonomous system exit link as an extended community. This feature is configured for links between directly connected external BGP (eBGP) neighbors. The link bandwidth extended community attribute is propagated to iBGP peers when extended community exchange is enabled. This feature is used with BGP multipath features to configure load balancing over links with unequal bandwidth.

- [Finding Feature Information, page 1](#)
- [Prerequisites for BGP Link Bandwidth, page 1](#)
- [Restrictions for BGP Link Bandwidth, page 2](#)
- [Information About BGP Link Bandwidth, page 2](#)
- [How to Configure BGP Link Bandwidth, page 3](#)
- [Configuration Examples for BGP Link Bandwidth, page 5](#)
- [Where to Go Next, page 9](#)
- [Additional References, page 9](#)
- [Feature Information for BGP Link Bandwidth, page 10](#)

Finding Feature Information

Your software release may not support all the features documented in this module. For the latest feature information and caveats, see the release notes for your platform and software release. To find information about the features documented in this module, and to see a list of the releases in which each feature is supported, see the Feature Information Table at the end of this document.

Use Cisco Feature Navigator to find information about platform support and Cisco software image support. To access Cisco Feature Navigator, go to www.cisco.com/go/cfn. An account on Cisco.com is not required.

Prerequisites for BGP Link Bandwidth

- BGP load balancing or multipath load balancing must be configured before BGP Link Bandwidth feature is enabled.



Americas Headquarters:
Cisco Systems, Inc., 170 West Tasman Drive, San Jose, CA 95134-1706 USA

- BGP extended community exchange must be enabled between iBGP neighbors to which the link bandwidth attribute is to be advertised.
- Cisco Express Forwarding or distributed Cisco Express Forwarding must be enabled on all participating routers.

Restrictions for BGP Link Bandwidth

- The BGP Link Bandwidth feature can be configured only under IPv4 and VPNv4 address family sessions.
- BGP can originate the link bandwidth community only for directly connected links to eBGP neighbors.
- Both iBGP and eBGP load balancing are supported in IPv4 and VPNv4 address families. However, eiBGP load balancing is supported only in VPNv4 address families.

Information About BGP Link Bandwidth

- [BGP Link Bandwidth Overview, page 2](#)
- [Link Bandwidth Extended Community Attribute, page 2](#)
- [Benefits of the BGP Link Bandwidth Feature, page 2](#)

BGP Link Bandwidth Overview

The BGP Link Bandwidth feature is used to enable multipath load balancing for external links with unequal bandwidth capacity. This feature is enabled under an IPv4 or VPNv4 address family session by entering the **bgp dmzlink-bw** command. This feature supports iBGP, eBGP multipath load balancing, and eiBGP multipath load balancing in Multiprotocol Label Switching (MPLS) VPNs. When this feature is enabled, routes learned from directly connected external neighbor are propagated through the internal BGP (iBGP) network with the bandwidth of the source external link.

The link bandwidth extended community indicates the preference of an autonomous system exit link in terms of bandwidth. This extended community is applied to external links between directly connected eBGP peers by entering the **neighbor dmzlink-bw** command. The link bandwidth extended community attribute is propagated to iBGP peers when extended community exchange is enabled with the **neighbor send-community** command.

Link Bandwidth Extended Community Attribute

The link bandwidth extended community attribute is a 4-byte value that is configured for a link on the demilitarized zone (DMZ) interface that connects two single hop eBGP peers. The link bandwidth extended community attribute is used as a traffic sharing value relative to other paths while traffic is being forwarded. Two paths are designated as equal for load balancing if the weight, local-pref, as-path length, Multi Exit Discriminator (MED), and Interior Gateway Protocol (IGP) costs are the same.

Benefits of the BGP Link Bandwidth Feature

The BGP Link Bandwidth feature allows BGP to be configured to send traffic over multiple iBGP or eBGP learned paths where the traffic that is sent is proportional to the bandwidth of the links that are used to exit

the autonomous system. The configuration of this feature can be used with eBGP and iBGP multipath features to enable unequal cost load balancing over multiple links. Unequal cost load balancing over links with unequal bandwidth was not possible in BGP before the BGP Link Bandwidth feature was introduced.

How to Configure BGP Link Bandwidth

- [Configuring and Verifying BGP Link Bandwidth, page 3](#)

Configuring and Verifying BGP Link Bandwidth

To configure the BGP Link Bandwidth feature, perform the steps in this section.

SUMMARY STEPS

1. **enable**
2. **configure terminal**
3. **router bgp** *autonomous-system-number*
4. **address-family ipv4**
5. **address-family ipv4** [*mdt* | *multicast* | *unicast* [*vrf vrf-name*] | *vrf vrf-name*]
6. **bgp dmzlink-bw**
7. **neighbor** *ip-address* **dmzlink-bw**
8. **neighbor** *ip-address* **send-community** [*both* | *extended* | *standard*]
9. **end**
10. **show ip bgp** *ip-address* [**longer-prefixes** [*injected*] | **shorter-prefixes** [*mask-length*]]
11. **show ip route** *ip-address* [*mask*] [**longer-prefixes**] [*protocol* [*process-id*] | [**list** *access-list-number* | *access-list-name*] | **static download**]

DETAILED STEPS

	Command or Action	Purpose
Step 1	enable Example: Router> enable	Enables higher privilege levels, such as privileged EXEC mode. <ul style="list-style-type: none"> • Enter your password if prompted.
Step 2	configure terminal Example: Router# configure terminal	Enters global configuration mode.

	Command or Action	Purpose
Step 3	<p>router bgp <i>autonomous-system-number</i></p> <p>Example:</p> <pre>Router(config)# router bgp 50000</pre>	Enters router configuration mode to create or configure a BGP routing process.
Step 4	<p>address-family ipv4</p> <p>Example:</p> <pre>Router(config-router-af)# address-family ipv4</pre>	Enters address family configuration mode.
Step 5	<p>address-family ipv4 [mdt multicast unicast [vrf <i>vrf-name</i>] vrf <i>vrf-name</i>]</p> <p>Example:</p> <pre>Router(config-router)# address-family ipv4</pre>	The BGP Link Bandwidth feature is supported only under the IPv4 and VPNv4 address families.
Step 6	<p>bgp dmzlink-bw</p> <p>Example:</p> <pre>Router(config-router-af)# bgp dmzlink-bw</pre>	<p>Configures BGP to distribute traffic proportionally to the bandwidth of the link.</p> <ul style="list-style-type: none"> This command must be entered on each router that contains an external interface that is to be used for multipath load balancing.
Step 7	<p>neighbor ip-address dmzlink-bw</p> <p>Example:</p> <pre>Router(config-router-af)# neighbor 172.16.1.1 dmzlink-bw</pre>	<p>Configures BGP to include the link bandwidth attribute for routes learned from the external interface specified IP address.</p> <ul style="list-style-type: none"> This command must be configured for each eBGP link that is to be configured as a multipath. Enabling this command allows the bandwidth of the external link to be propagated through the link bandwidth extended community.
Step 8	<p>neighbor ip-address send-community [both extended standard]</p> <p>Example:</p> <pre>Router(config-router-af)# neighbor 10.10.10.1 send-community extended</pre>	<p>(Optional) Enables community or extended community exchange with the specified neighbor.</p> <ul style="list-style-type: none"> This command must be configured for iBGP peers to which the link bandwidth extended community attribute is to be propagated.
Step 9	<p>end</p> <p>Example:</p> <pre>Router(config-router-af)# end</pre>	Exits address family configuration mode, and enters privileged EXEC mode.

Command or Action	Purpose
<p>Step 10 <code>show ip bgp ip-address [longer-prefixes [injected] shorter-prefixes [mask-length]]</code></p> <p>Example:</p> <pre>Router# show ip bgp 10.0.0.0</pre>	<p>(Optional) Displays information about the TCP and BGP connections to neighbors.</p> <ul style="list-style-type: none"> The output displays the status of the link bandwidth configuration. The bandwidth of the link is shown in kilobytes.
<p>Step 11 <code>show ip route ip-address [mask] [longer-prefixes] protocol [process-id] [list access-list-number access-list-name] static download</code></p> <p>Example:</p> <pre>Router# show ip route 10.0.0.0</pre>	<p>(Optional) Displays the current state of the routing table.</p> <ul style="list-style-type: none"> The output displays traffic share values, including the weights of the links that are used to direct traffic proportionally to the bandwidth of each link.

Configuration Examples for BGP Link Bandwidth

- [Example: BGP Link Bandwidth Configuration, page 5](#)
- [Example: Verifying BGP Link Bandwidth, page 8](#)

Example: BGP Link Bandwidth Configuration

In the following examples, the BGP Link Bandwidth feature is configured so BGP will distribute traffic proportionally to the bandwidth of each external link. The figure below shows two external autonomous systems connected by three links that each carry a different amount of bandwidth (unequal cost links). Multipath load balancing is enabled and traffic is balanced proportionally.



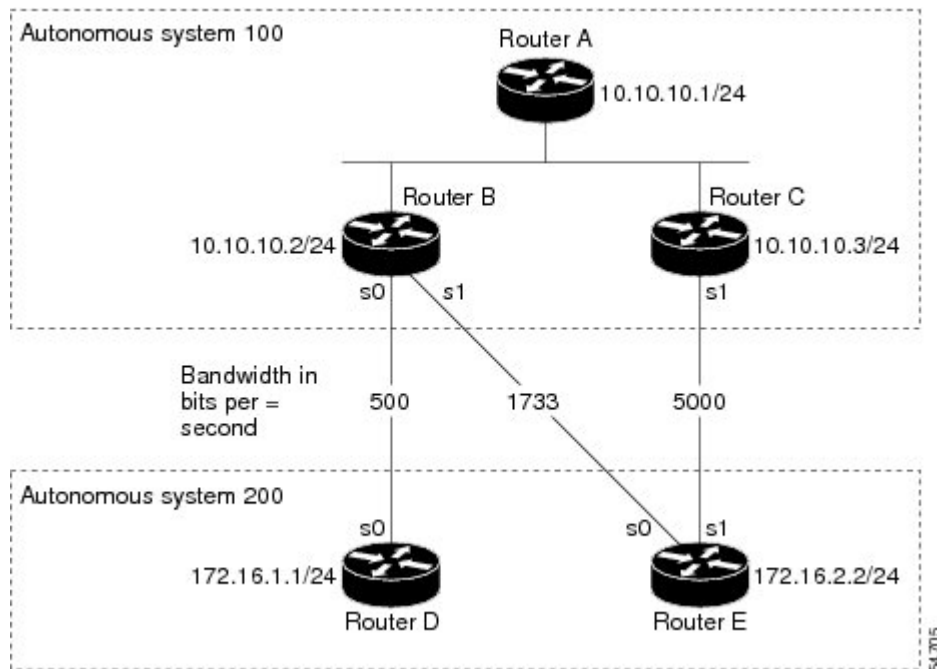
Note

The BGP Link Bandwidth feature functions for simple topologies that have a single path toward the exit points.

**Caution**

The BGP Link Bandwidth feature might not function properly if load balancing is required toward the exit points.

Figure 1 BGP Link Bandwidth Configuration



Router A Configuration

In the following example, Router A is configured to support iBGP multipath load balancing and to exchange the BGP extended community attribute with iBGP neighbors:

```
RouterA(config)# router bgp 100
RouterA(config-router)# neighbor 10.10.10.2 remote-as 100
RouterA(config-router)# neighbor 10.10.10.2 update-source Loopback 0
RouterA(config-router)# neighbor 10.10.10.3 remote-as 100
RouterA(config-router)# neighbor 10.10.10.3 update-source Loopback 0
RouterA(config-router)# address-family ipv4
RouterA(config-router-af)# bgp dmzlink-bw
RouterA(config-router-af)# neighbor 10.10.10.2 activate
RouterA(config-router-af)# neighbor 10.10.10.2 send-community both
RouterA(config-router-af)# neighbor 10.10.10.3 activate
RouterA(config-router-af)# neighbor 10.10.10.3 send-community both
RouterA(config-router-af)# maximum-paths ibgp 6
```

Router B Configuration

In the following example Router B is configured to support multipath load balancing, to distribute Router D and Router E link traffic proportionally to the bandwidth of each link, and to advertise the bandwidth of these links to iBGP neighbors as an extended community:

```
RouterB(config)# router bgp 100
RouterB(config-router)# neighbor 10.10.10.1 remote-as 100
RouterB(config-router)# neighbor 10.10.10.1 update-source Loopback 0
RouterB(config-router)# neighbor 10.10.10.3 remote-as 100
RouterB(config-router)# neighbor 10.10.10.3 update-source Loopback 0
RouterB(config-router)# neighbor 172.16.1.1 remote-as 200
RouterB(config-router)# neighbor 172.16.1.1 ebgp-multihop 1
RouterB(config-router)# neighbor 172.16.2.2 remote-as 200
RouterB(config-router)# neighbor 172.16.2.2 ebgp-multihop 1
RouterB(config-router)# address-family ipv4
RouterB(config-router-af)# bgp dmzlink-bw
RouterB(config-router-af)# neighbor 10.10.10.1 activate
RouterB(config-router-af)# neighbor 10.10.10.1 next-hop-self
RouterB(config-router-af)# neighbor 10.10.10.1 send-community both
RouterB(config-router-af)# neighbor 10.10.10.3 activate
RouterB(config-router-af)# neighbor 10.10.10.3 next-hop-self
RouterB(config-router-af)# neighbor 10.10.10.3 send-community both
RouterB(config-router-af)# neighbor 172.16.1.1
RouterB(config-router-af)# neighbor 172.16.1.1 activate
RouterB(config-router-af)# neighbor 172.16.1.1 dmzlink-bw
RouterB(config-router-af)# neighbor 172.16.2.2 activate
RouterB(config-router-af)# neighbor 172.16.2.2 dmzlink-bw
RouterB(config-router-af)# maximum-paths ibgp 6
RouterB(config-router-af)# maximum-paths 6
```

Router C Configuration

In the following example Router C is configured to support multipath load balancing and to advertise the bandwidth of the link with Router E to iBGP neighbors as an extended community:

```
RouterC(config)# router bgp 100
RouterC(config-router)# neighbor 10.10.10.1 remote-as 100
RouterC(config-router)# neighbor 10.10.10.1 update-source Loopback 0
RouterC(config-router)# neighbor 10.10.10.2 remote-as 100
RouterC(config-router)# neighbor 10.10.10.2 update-source Loopback 0
RouterC(config-router)# neighbor 172.16.3.30 remote-as 200
RouterC(config-router)# neighbor 172.16.3.30 ebgp-multihop 1
RouterC(config-router)# address-family ipv4
RouterC(config-router-af)# bgp dmzlink-bw
RouterC(config-router-af)# neighbor 10.10.10.1 activate
RouterC(config-router-af)# neighbor 10.10.10.1 send-community both
RouterC(config-router-af)# neighbor 10.10.10.1 next-hop-self
RouterC(config-router-af)# neighbor 10.10.10.2 activate
RouterC(config-router-af)# neighbor 10.10.10.2 send-community both
RouterC(config-router-af)# neighbor 10.10.10.2 next-hop-self
RouterC(config-router-af)# neighbor 172.16.3.3 activate
RouterC(config-router-af)# neighbor 172.16.3.3 dmzlink-bw
```

```
RouterC(config-router-af)# maximum-paths ibgp 6
RouterC(config-router-af)# maximum-paths 6
```

Example: Verifying BGP Link Bandwidth

The examples in this section show the verification of this feature on Router A, Router B, and Router C.

Router B

In the following example, the **show ip bgp** command is entered on Router B to verify that two unequal cost best paths have been installed into the BGP routing table. The bandwidth for each link is displayed with each route.

```
RouterB# show ip bgp 192.168.1.0
BGP routing table entry for 192.168.1.0/24, version 48
Paths: (2 available, best #2)
Multipath: eBGP
  Advertised to update-groups:
    1          2
200
  172.16.1.1 from 172.16.1.2 (192.168.1.1)
    Origin incomplete, metric 0, localpref 100, valid, external, multipath, best
    Extended Community: 0x0:0:0
    DMZ-Link Bw 278 kbytes
200
  172.16.2.2 from 172.16.2.2 (192.168.1.1)
    Origin incomplete, metric 0, localpref 100, valid, external, multipath, best
    Extended Community: 0x0:0:0
    DMZ-Link Bw 625 kbytes
```

Router A

In the following example, the **show ip bgp** command is entered on Router A to verify that the link bandwidth extended community has been propagated through the iBGP network to Router A. Exit links are located on Router B and Router C. The output shows that a route for each exit link to autonomous system 200 has been installed as a best path in the BGP routing table.

```
RouterA# show ip bgp 192.168.1.0

BGP routing table entry for 192.168.1.0/24, version 48
Paths: (3 available, best #3)
Multipath: eBGP
  Advertised to update-groups:
    1          2
200
  172.16.1.1 from 172.16.1.2 (192.168.1.1)
    Origin incomplete, metric 0, localpref 100, valid, external, multipath
    Extended Community: 0x0:0:0
    DMZ-Link Bw 278 kbytes
200
  172.16.2.2 from 172.16.2.2 (192.168.1.1)
    Origin incomplete, metric 0, localpref 100, valid, external, multipath, best
    Extended Community: 0x0:0:0
    DMZ-Link Bw 625 kbytes
200
  172.16.3.3 from 172.16.3.3 (192.168.1.1)
    Origin incomplete, metric 0, localpref 100, valid, external, multipath, best
    Extended Community: 0x0:0:0
    DMZ-Link Bw 2500 kbytes
```


Router A

In the following example, the **show ip route** command is entered on Router A to verify the multipath routes that are advertised and the associated traffic share values:

```
RouterA# show ip route 192.168.1.0
Routing entry for 192.168.1.0/24
  Known via "bgp 100", distance 200, metric 0
  Tag 200, type internal
  Last update from 172.168.1.1 00:01:43 ago
  Routing Descriptor Blocks:
  * 172.168.1.1, from 172.168.1.1, 00:01:43 ago
    Route metric is 0, traffic share count is 13
    AS Hops 1, BGP network version 0
    Route tag 200
  172.168.2.2, from 172.168.2.2, 00:01:43 ago
    Route metric is 0, traffic share count is 30
    AS Hops 1, BGP network version 0
    Route tag 200
  172.168.3.3, from 172.168.3.3, 00:01:43 ago
    Route metric is 0, traffic share count is 120
    AS Hops 1, BGP network version 0
    Route tag 200
```

Where to Go Next

For information about the BGP Multipath Load Sharing for Both eBGP and iBGP in an MPLS-VPN feature, refer to the following document: "BGP Multipath Load Sharing for Both eBGP and iBGP in an MPLS-VPN".

For more information about the iBGP Multipath Load Sharing feature, refer to the following document: "iBGP Multipath Load Sharing".

Additional References

The following sections provide references related to the BGP Link Bandwidth feature.

Related Documents

Related Topic	Document Title
BGP commands: complete command syntax, command mode, command history, defaults, usage guidelines, and examples	<i>Cisco IOS IP Routing: BGP Command Reference</i>
CEF configuration tasks	"Cisco Express Forwarding Overview" module

Standards

Standard	Title
No new or modified standards are supported by this feature, and support for existing standards has not been modified by this feature.	--

MIBs

MIB	MIBs Link
No new or modified MIBs are supported by this feature, and support for existing MIBs has not been modified by this feature.	To obtain lists of supported MIBs by platform and Cisco IOS release, and to download MIB modules, go to the Cisco MIB website on Cisco.com at the following URL: http://www.cisco.com/public/sw-center/netmgmt/cmtk/mibs.shtml

RFCs

RFC	Title
draft-ramachandra-bgp-ext-communities-09.txt	<i>BGP Extended Communities Attribute</i>

Technical Assistance

Description	Link
The Cisco Support and Documentation website provides online resources to download documentation, software, and tools. Use these resources to install and configure the software and to troubleshoot and resolve technical issues with Cisco products and technologies. Access to most tools on the Cisco Support and Documentation website requires a Cisco.com user ID and password.	http://www.cisco.com/cisco/web/support/index.html

Feature Information for BGP Link Bandwidth

The following table provides release information about the feature or features described in this module. This table lists only the software release that introduced support for a given feature in a given software release train. Unless noted otherwise, subsequent releases of that software release train also support that feature.

Use Cisco Feature Navigator to find information about platform support and Cisco software image support. To access Cisco Feature Navigator, go to www.cisco.com/go/cfn. An account on Cisco.com is not required.

Table 1 **Feature Information for BGP Link Bandwidth**

Feature Name	Releases	Feature Information
BGP Link Bandwidth	12.2(2)T 12.2(14)S	<p>This feature advertises the bandwidth of an autonomous system exit link as an extended community. The link bandwidth extended community attribute is propagated to iBGP peers when extended community exchange is enabled.</p> <p>The following commands were introduced or modified: router bgp, address-family ipv4, address-family ipv4, bgp dmzlink-bw, neighbor, show ip bgp, show ip route.</p>

Cisco and the Cisco logo are trademarks or registered trademarks of Cisco and/or its affiliates in the U.S. and other countries. To view a list of Cisco trademarks, go to this URL: www.cisco.com/go/trademarks. Third-party trademarks mentioned are the property of their respective owners. The use of the word partner does not imply a partnership relationship between Cisco and any other company. (1110R)

Any Internet Protocol (IP) addresses and phone numbers used in this document are not intended to be actual addresses and phone numbers. Any examples, command display output, network topology diagrams, and other figures included in the document are shown for illustrative purposes only. Any use of actual IP addresses or phone numbers in illustrative content is unintentional and coincidental.

© 2012 Cisco Systems, Inc. All rights reserved.