



Configuring an Intermediate IP Multicast Helper Between Broadcast-Only Networks

Last Updated: December 16, 2011

When a multicast-capable internetwork is between two subnets with broadcast-only-capable hosts, you can convert broadcast traffic to IP multicast traffic at the first hop router and convert it back to broadcast traffic at the last hop router to deliver the packets to the broadcast clients. You can thus take advantage of the multicast capability of an intermediate IP multicast helper. Configuring an intermediate IP multicast helper allows the transport of broadcast packets across an IP multicast-enabled network, thereby preventing unnecessary replication at the intermediate routers.

- [Finding Feature Information, page 1](#)
- [Prerequisites for Configuring an Intermediate IP Multicast Helper Between Broadcast-Only Networks, page 2](#)
- [Information About Configuring an Intermediate IP Multicast Helper Between Broadcast-Only Networks, page 2](#)
- [How to Configure an Intermediate IP Multicast Helper Between Broadcast-Only Networks, page 2](#)
- [Configuration Examples for an Intermediate IP Multicast Helper Between Broadcast-Only Networks, page 7](#)
- [Additional References, page 8](#)
- [Feature Information for Configuring an Intermediate IP Multicast Helper Between Broadcast-Only Networks, page 9](#)

Finding Feature Information

Your software release may not support all the features documented in this module. For the latest feature information and caveats, see the release notes for your platform and software release. To find information about the features documented in this module, and to see a list of the releases in which each feature is supported, see the Feature Information Table at the end of this document.

Use Cisco Feature Navigator to find information about platform support and Cisco software image support. To access Cisco Feature Navigator, go to www.cisco.com/go/cfn. An account on Cisco.com is not required.



Americas Headquarters:
Cisco Systems, Inc., 170 West Tasman Drive, San Jose, CA 95134-1706 USA

Prerequisites for Configuring an Intermediate IP Multicast Helper Between Broadcast-Only Networks

- You understand the concepts documented in the “ IP Multicast Technology Overview ” module.
- You have IP multicast configured in your network environment and your IP multicast network is between broadcast-only networks. See the “ Configuring Basic IP Multicast ” module for more information about configuring IP multicast.

Information About Configuring an Intermediate IP Multicast Helper Between Broadcast-Only Networks

- [Intermediate IP Multicast Helper Capability, page 2](#)

Intermediate IP Multicast Helper Capability

An intermediate IP multicast helper allows the transport of broadcast packets across an IP multicast-enabled network, thereby preventing unnecessary replication at the intermediate routers.

When configuring an intermediate IP multicast helper between broadcast-only networks, you must configure the first hop router to convert broadcast traffic to IP multicast traffic and the last hop router to convert IP multicast traffic back to broadcast traffic.

How to Configure an Intermediate IP Multicast Helper Between Broadcast-Only Networks

- [Configuring the First Hop Router to Convert Broadcast Traffic to IP Multicast Traffic, page 2](#)
- [Configuring the Last Hop Router to Convert the IP Multicast Traffic Back to Broadcast Traffic, page 4](#)

Configuring the First Hop Router to Convert Broadcast Traffic to IP Multicast Traffic

Perform this task to convert broadcast traffic to IP multicast traffic on the first hop router. The first hop router is on the border between the broadcast-only network and IP multicast network.

- This task assumes that you have an IP multicast network configured between two broadcast-only networks.

SUMMARY STEPS

1. **enable**
2. **configure terminal**
3. **access-list** *access-list-number* {deny | permit} **udp** {any | [host] *source-address source-wildcard*} [operator [port]] {any | [host] *destination-address destination-wildcard*} [operator [port]]
4. **interface** *type number*
5. **ip multicast helper-map broadcast** *group-address access-list*
6. **exit**
7. **ip forward-protocol udp** [port]
8. **end**

DETAILED STEPS

	Command or Action	Purpose
Step 1	enable Example: <pre>Router> enable</pre>	Enables privileged EXEC mode. <ul style="list-style-type: none"> • Enter your password if prompted.
Step 2	configure terminal Example: <pre>Router# configure terminal</pre>	Enters global configuration mode.
Step 3	access-list <i>access-list-number</i> {deny permit} udp {any [host] <i>source-address source-wildcard</i> } [operator [port]] {any [host] <i>destination-address destination-wildcard</i> } [operator [port]] Example: <pre>Router# access-list 105 permit udp host 126.1.22.199 host 126.1.22.255 eq 4000</pre>	Creates an extended IP access list to control which UDP broadcast packets are translated.
Step 4	interface <i>type number</i> Example: <pre>Router(config)# interface gigabitethernet 0/0/0</pre>	Enters interface configuration mode. <ul style="list-style-type: none"> • For the <i>type</i> and <i>number</i> arguments, select an incoming interface on the first hop router that is receiving broadcast-only traffic

Command or Action	Purpose
<p>Step 5 <code>ip multicast helper-map broadcast group-address access-list</code></p> <p>Example:</p> <pre>Router(config-if)# ip multicast helper-map broadcast 239.254.2.5 105</pre>	<p>Allows IP multicast routing in a multicast-capable internetwork between two broadcast-only internetworks.</p> <ul style="list-style-type: none"> In the configuration on the first hop router, the ip multicast helper-map command is used with the broadcast keyword and <i>group-address</i> argument to specify the traffic to be converted from broadcast to multicast. The multicast group address specified for the <i>group-address</i> argument is the address to which the converted traffic will be directed. For the <i>access-list</i> argument, specify the name or number of the access list created in Step 3 of this task.
<p>Step 6 <code>exit</code></p> <p>Example:</p> <pre>Router(config-if)# exit</pre>	<p>Exits interface configuration mode and returns to global configuration mode.</p>
<p>Step 7 <code>ip forward-protocol udp [port]</code></p> <p>Example:</p> <pre>Router(config)# ip forward-protocol udp 4000</pre>	<p>Configures the forwarding of UDP broadcast messages destined for the specified port.</p>
<p>Step 8 <code>end</code></p> <p>Example:</p> <pre>Router(config)# end</pre>	<p>Exits global configuration mode and enters privileged EXEC mode.</p>

Configuring the Last Hop Router to Convert the IP Multicast Traffic Back to Broadcast Traffic

Perform this task to convert the IP multicast traffic back to broadcast traffic on the last hop router. The last hop router is on the border between the intermediate IP multicast network and broadcast-only network.

- This task assumes that you have an IP multicast network configured between two broadcast-only networks.

SUMMARY STEPS

1. enable
2. configure terminal
3. access-list *access-list-number* {deny | permit} udp {any | [host] *source-address source-wildcard*} [operator [port]] {any | [host] *destination-address destination-wildcard*} [operator [port]]
4. interface *type number*
5. ip multicast helper-map *group-address broadcast-address access-list*
6. exit
7. interface *type number*
8. ip directed-broadcast
9. exit
10. ip forward-protocol udp [port]
11. end

DETAILED STEPS

	Command or Action	Purpose
Step 1	<p>enable</p> <p>Example:</p> <pre>Router> enable</pre>	<p>Enables privileged EXEC mode.</p> <ul style="list-style-type: none"> • Enter your password if prompted.
Step 2	<p>configure terminal</p> <p>Example:</p> <pre>Router# configure terminal</pre>	<p>Enters global configuration mode.</p>
Step 3	<p>access-list <i>access-list-number</i> {deny permit} udp {any [host] <i>source-address source-wildcard</i>} [operator [port]] {any [host] <i>destination-address destination-wildcard</i>} [operator [port]]</p> <p>Example:</p> <pre>Router# access-list 105 permit udp host 126.1.22.199 host 126.1.22.255 eq 4000</pre>	<p>Creates an extended IP access list to control which UDP broadcast packets are translated.</p>

Command or Action	Purpose
<p>Step 4 <code>interface type number</code></p> <p>Example:</p> <pre>Router(config)# interface gigabitethernet 1/0/0</pre>	<p>Enters interface configuration mode.</p> <ul style="list-style-type: none"> For the <i>type</i> and <i>number</i> arguments, select an incoming interface on the last hop router that is receiving IP multicast traffic.
<p>Step 5 <code>ip multicast helper-map group-address broadcast-address access-list</code></p> <p>Example:</p> <pre>Router(config-if)# ip multicast helper- map 239.254.2.5 126.1.28.255 105</pre>	<p>Allows IP multicast routing in a multicast-capable internetwork between two broadcast-only internetworks.</p> <ul style="list-style-type: none"> In the configuration on the last hop router, the ip multicast helper-map command is used with the <i>group-address</i> and <i>broadcast-address</i> arguments to specify the traffic to be converted from IP multicast to broadcast. The multicast group address specified for the <i>group-address</i> argument is the address of the traffic to be converted from IP multicast to broadcast. The broadcast address specified for the <i>broadcast-address</i> argument is the address to which the broadcast traffic will be sent. For the <i>access-list</i> argument, specify the name or number of the access list created in Step 3 of this task.
<p>Step 6 <code>exit</code></p> <p>Example:</p> <pre>Router(config-if)# exit</pre>	<p>Exits interface configuration and returns to global configuration mode.</p>
<p>Step 7 <code>interface type number</code></p> <p>Example:</p> <pre>Router(config)# interface gigabitethernet 2/0/0</pre>	<p>Enters interface configuration mode.</p> <ul style="list-style-type: none"> For the <i>type</i> and <i>number</i> arguments, select an outgoing interface on the last hop router that is facing the destination broadcast-only subnet.
<p>Step 8 <code>ip directed-broadcast</code></p> <p>Example:</p> <pre>Router(config-if)# ip directed-broadcast</pre>	<p>Enables the translation of a directed broadcast to physical broadcasts.</p>
<p>Step 9 <code>exit</code></p> <p>Example:</p> <pre>Router(config-if)# exit</pre>	<p>Exits interface configuration and returns to global configuration mode.</p>

Command or Action	Purpose
<p>Step 10 <code>ip forward-protocol udp [port]</code></p> <p>Example:</p> <pre>Router(config)# ip forward-protocol udp 4000</pre>	<p>Configures the forwarding of UDP broadcast messages destined for the specified port.</p>
<p>Step 11 <code>end</code></p> <p>Example:</p> <pre>Router(config)# end</pre>	<p>Exits global configuration mode and enters privileged EXEC mode.</p>

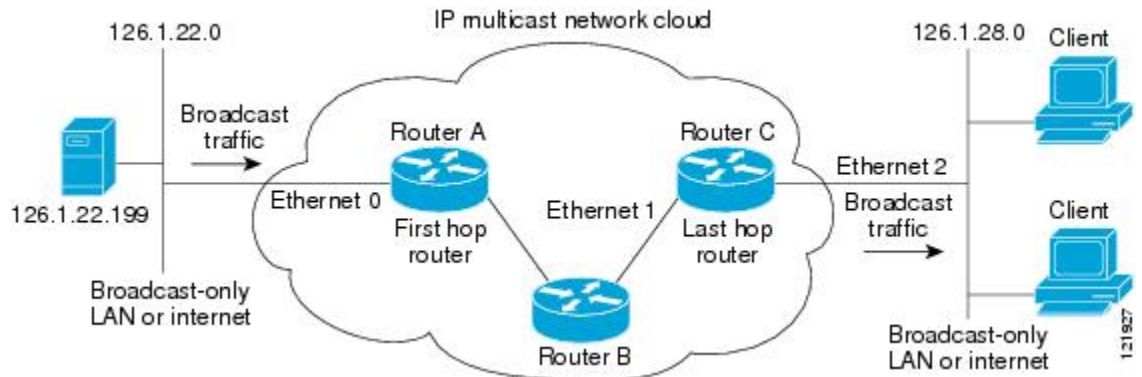
Configuration Examples for an Intermediate IP Multicast Helper Between Broadcast-Only Networks

- [Configuring an Intermediate IP Multicast Helper Between Broadcast-Only Networks Example, page 7](#)

Configuring an Intermediate IP Multicast Helper Between Broadcast-Only Networks Example

This example shows how to configure an intermediate IP multicast helper between broadcast-only networks. The topology used for this example is illustrated in the figure below.

Figure 1 IP Multicast Helper Example Topology



In this example, a server on the LAN connected to Gigabit Ethernet interface 0/0/0 of Router A is sending a UDP broadcast traffic with a source address of 126.1.22.199 and a destination address of 126.1.22.255:4000. The configuration on the first hop router converts the broadcast traffic arriving at incoming Gigabit Ethernet interface 0/0/0 destined for UDP port 4000 to IP multicast traffic. The access list

permits traffic being sent from the server at 126.1.22.199 being sent to 126.1.22.255:4000. The traffic is sent to group address 239.254.2.5. The **ip forward-protocol** command specifies the forwarding of broadcast messages destined for UDP port 4000.

**Note**

This example primarily displays the configuration related to configuring an intermediate IP multicast helper. Protocol Independent Multicast-Sparse Mode (PIM-SM) is the multicast protocol used in this example. PIM-SM requires the use of a rendezvous point (RP). For more information about configuring RPs, see the Configuring Basic IP Multicast module.

The configuration on the last hop router converts the IP multicast traffic at incoming Gigabit Ethernet interface 1/0/0 back to broadcast at outgoing Gigabit Ethernet interface 2/0/0. Again, not all multicast traffic emerging from the multicast network should be converted from multicast to broadcast, only the traffic destined for 126.1.22.255:4000.

The configurations for Router A and Router C are as follows:

Router A--First Hop Router Configuration

```
interface gigabitethernet 0/0/0
 ip address 126.1.22.1 255.255.255.0
 ip pim sparse-mode
 ip multicast helper-map broadcast 239.254.2.5 105
 access-list 105 permit udp host 126.1.22.199 host 126.1.22.255 eq 4000
 ip forward-protocol udp 4000
```

Router C--Last Hop Router Configuration

```
interface gigabitethernet 1/0/0
 ip address 126.1.26.1 255.255.255.0
 ip pim sparse-mode
 ip multicast helper-map 239.254.2.5 126.1.28.255 105
 !
interface gigabitethernet 2/0/0
 ip address 126.1.28.1 255.255.255.0
 ip directed-broadcast
 access-list 105 permit udp host 126.1.22.199 any eq 4000
 ip forward-protocol udp 4000
```

Additional References

Related Documents

Related Topic	Document Title
Basic IP multicast concepts, configuration tasks, and examples	“ Configuring Basic IP Multicast ” module
Overview of the IP multicast technology area	“ IP Multicast TechnologyOverview ” module
IP multicast commands: complete command syntax, command mode, command history, command defaults, usage guidelines, and examples	<i>Cisco IOS IP Multicast Command Reference</i>

Standards

Standard	Title
No new or modified standards are supported by this feature, and support for existing standards has not been modified by this feature.	--

MIBs

MIB	MIBs Link
No new or modified MIBs are supported by this feature, and support for existing MIBs has not been modified by this feature.	To locate and download MIBs for selected platforms, Cisco IOS releases, and feature sets, use Cisco MIB Locator found at the following URL: http://www.cisco.com/go/mibs

RFCs

RFC	Title
No new or modified RFCs are supported by this feature, and support for existing RFCs has not been modified by this feature.	--

Technical Assistance

Description	Link
<p>The Cisco Support website provides extensive online resources, including documentation and tools for troubleshooting and resolving technical issues with Cisco products and technologies.</p> <p>To receive security and technical information about your products, you can subscribe to various services, such as the Product Alert Tool (accessed from Field Notices), the Cisco Technical Services Newsletter, and Really Simple Syndication (RSS) Feeds.</p> <p>Access to most tools on the Cisco Support website requires a Cisco.com user ID and password.</p>	http://www.cisco.com/techsupport

Feature Information for Configuring an Intermediate IP Multicast Helper Between Broadcast-Only Networks

The following table provides release information about the feature or features described in this module. This table lists only the software release that introduced support for a given feature in a given software

release train. Unless noted otherwise, subsequent releases of that software release train also support that feature.

Use Cisco Feature Navigator to find information about platform support and Cisco software image support. To access Cisco Feature Navigator, go to www.cisco.com/go/cfn. An account on Cisco.com is not required.

Table 1 **Feature Information for Configuring an IP Multicast Helper Between Broadcast-Only Networks**

Feature Name	Releases	Feature Information
This table is intentionally left blank because no features were introduced or modified in this module since Cisco IOS Release 12.2(1). This table will be updated when feature information is added to this module.	--	--

Cisco and the Cisco logo are trademarks or registered trademarks of Cisco and/or its affiliates in the U.S. and other countries. To view a list of Cisco trademarks, go to this URL: www.cisco.com/go/trademarks. Third-party trademarks mentioned are the property of their respective owners. The use of the word partner does not imply a partnership relationship between Cisco and any other company. (1110R)

Any Internet Protocol (IP) addresses and phone numbers used in this document are not intended to be actual addresses and phone numbers. Any examples, command display output, network topology diagrams, and other figures included in the document are shown for illustrative purposes only. Any use of actual IP addresses or phone numbers in illustrative content is unintentional and coincidental.

© 2011 Cisco Systems, Inc. All rights reserved.