



## Connector VM Maintenance

---

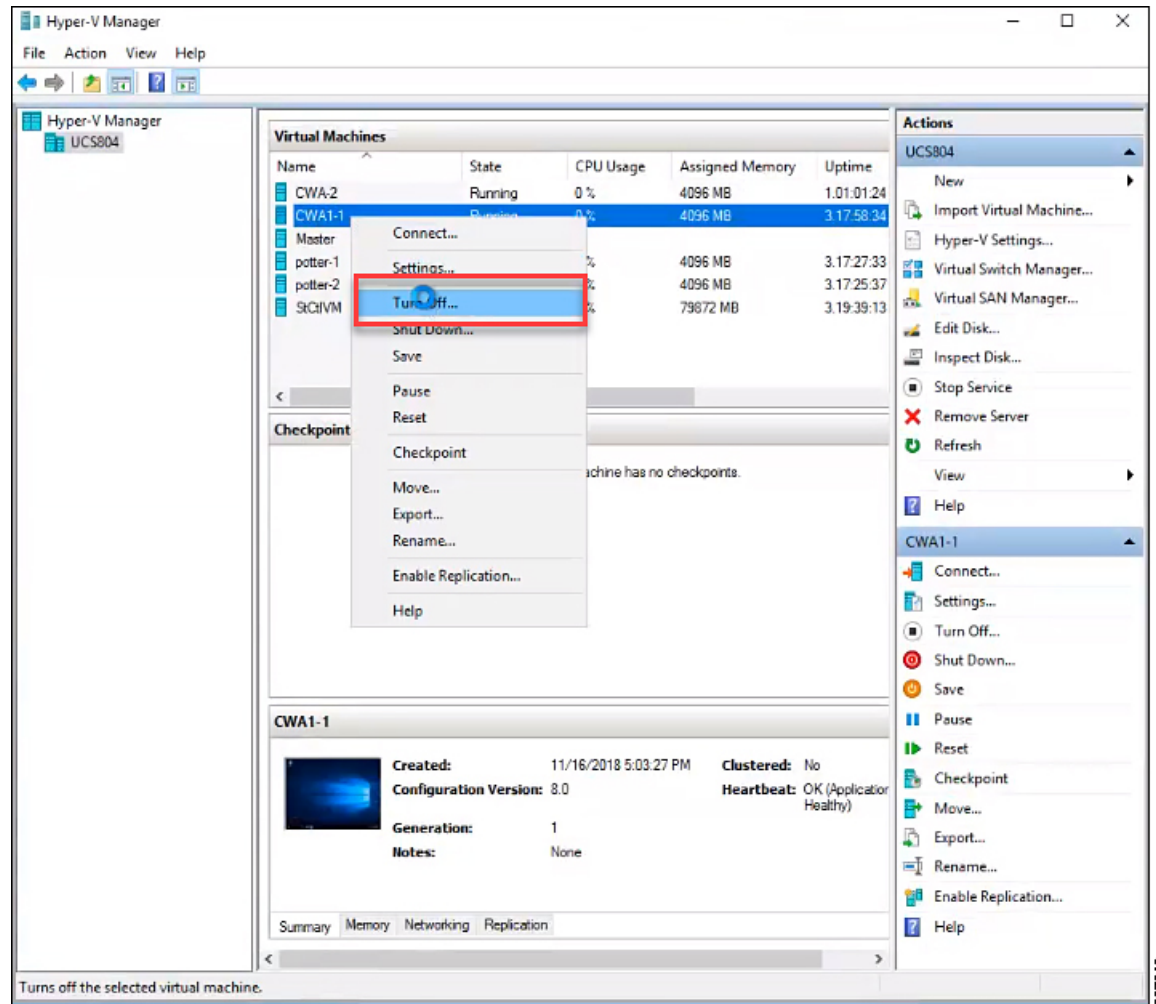
- [Deleting the Connector VM, on page 1](#)

### Deleting the Connector VM

There may be instances where you need to delete the connector VM from Microsoft Hyper-V Server 2016. For example, you may need to change the resource location or you wish to use a different base VM as the template for the connector VM. This procedure outlines how to delete the connector VM from the Hyper-V Manager, and how to perform a clean-up of entries from Hyper-V. This procedure also covers how to remove the Citrix Cloud Connector for the connector VM.

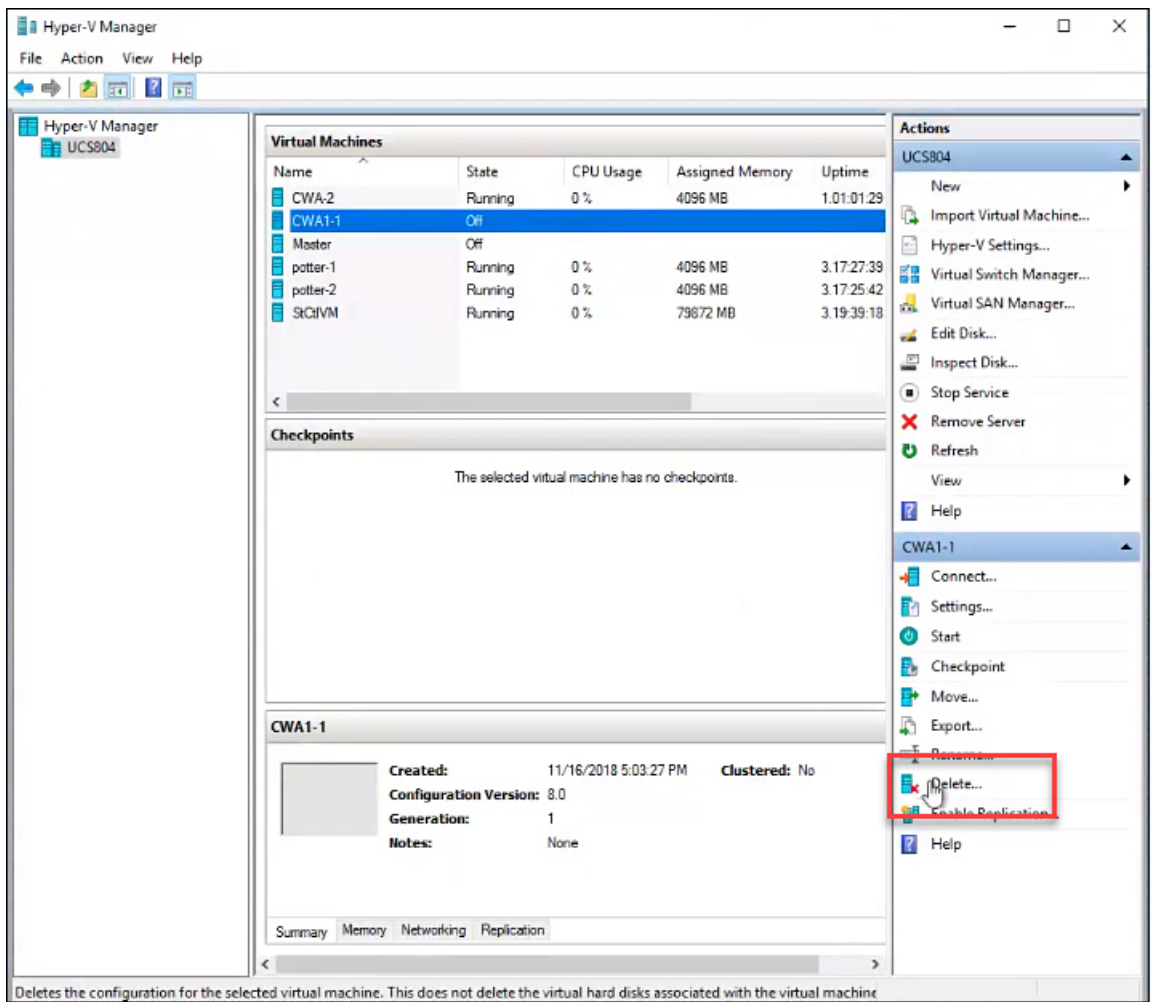
- 
- Step 1** Log in to the Hyper-V instance using a Remote Desktop connection and then launch the Hyper-V Manager from the Microsoft Windows Server.
- Step 2** From Hyper-V Manager, locate the installed Citrix Cloud Connector VM in the list of Virtual Machines in the HX cluster along with the original base VM.
- Step 3** Select the Citrix Cloud Connector VM, then right-click and select **Turn Off** from the menu. Confirm the action from the Turn Off Machine dialog box.

Figure 1: Turning Off the Citrix Cloud Connector VM

**Step 4**

Select the VM, then select **Delete** from the list of actions. Confirm the deletion action from the Delete dialog box. The selected VM is deleted from the list of virtual machines in the HX cluster.

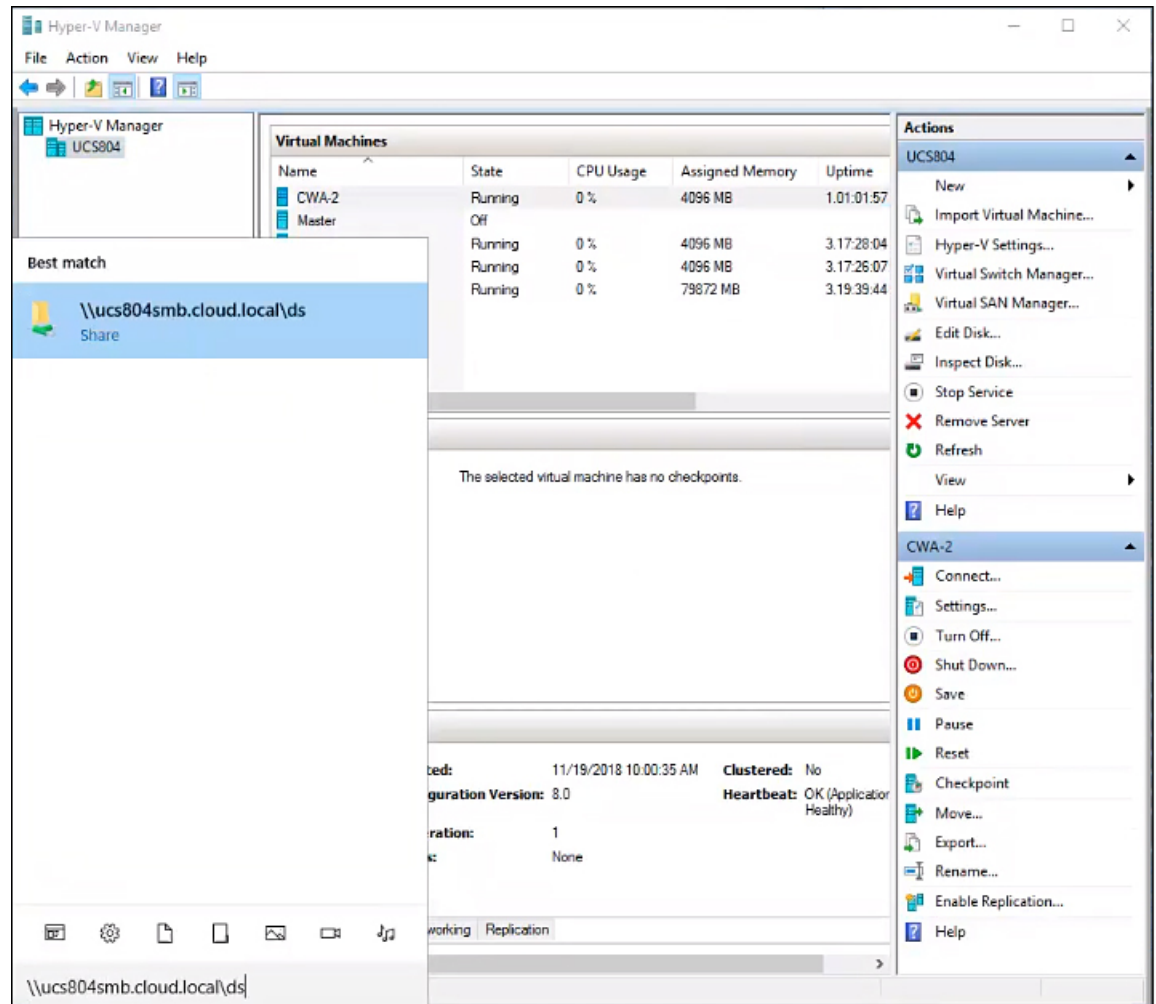
Figure 2: Deleting the Citrix Cloud Connector VM



**Step 5**

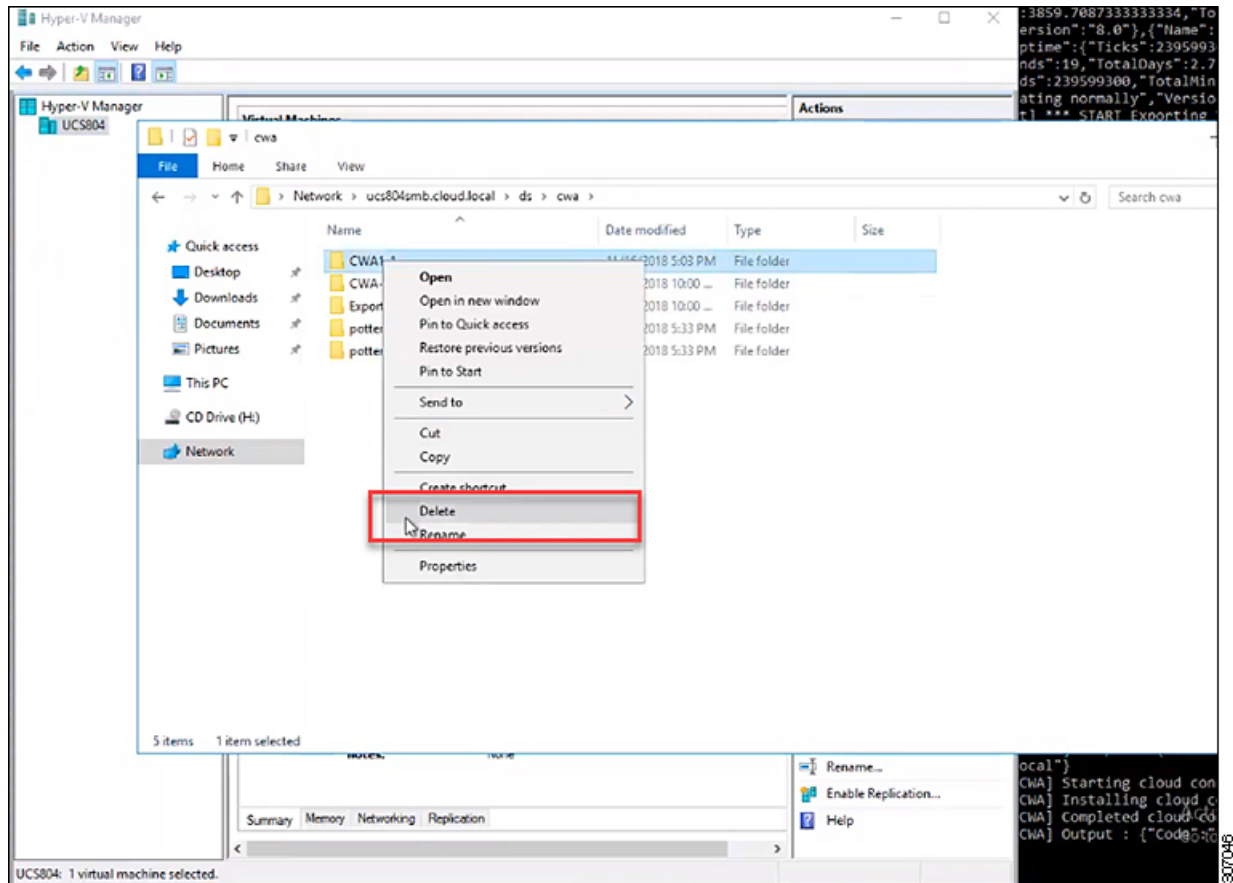
Open Windows Explorer and navigate to the location of the cluster SMB share and datastore folder in Hyper-V Manager on which the base VM is running (for example, \\ucs804smb.cloud.local\ds1).

Figure 3: Navigating to the SMB Folder



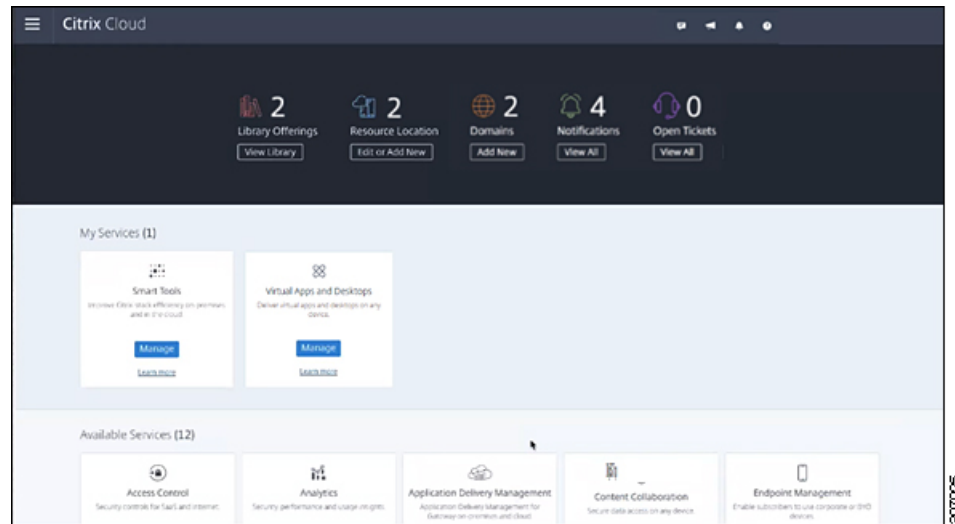
**Step 6** Locate the Citrix Cloud Connector VM folder. Right-click the folder and select **Delete** to remove the folder and all stale entries that are contained in the folder.

Figure 4: Deleting the Citrix Cloud Connector VM Folder



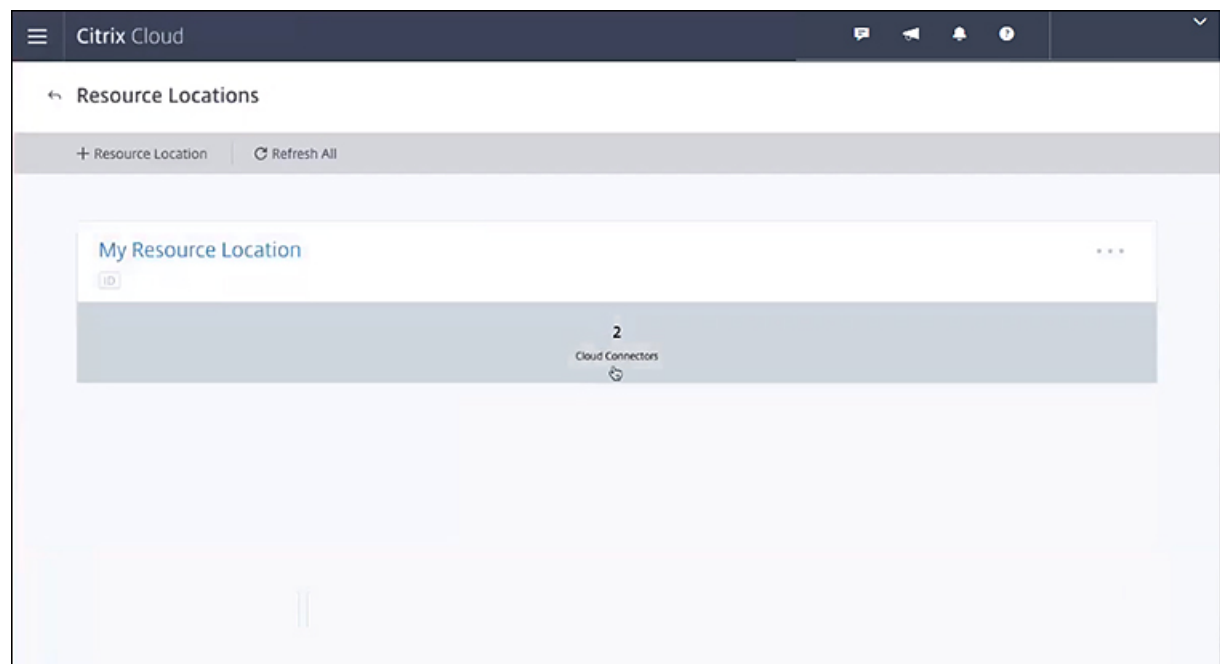
- Step 7** Enter your Citrix credentials (Citrix.com, My Citrix, or Citrix Cloud) to securely log in to your Citrix Cloud account. Be sure to sign in with the email address and password you provided when you signed up.
- If your company allows you to sign-in to Citrix Cloud using their company credentials instead of a Citrix account, click **Sign in with my company credentials** and enter your company's sign in URL for your account.
- Step 8** After signing in to the Citrix Cloud GUI, click **Resource Location** to access the Resource Locations page.

Figure 5: Citrix Cloud



**Step 9** From the Resource Locations page, click **Refresh All** to see the Citrix Cloud Connectors.

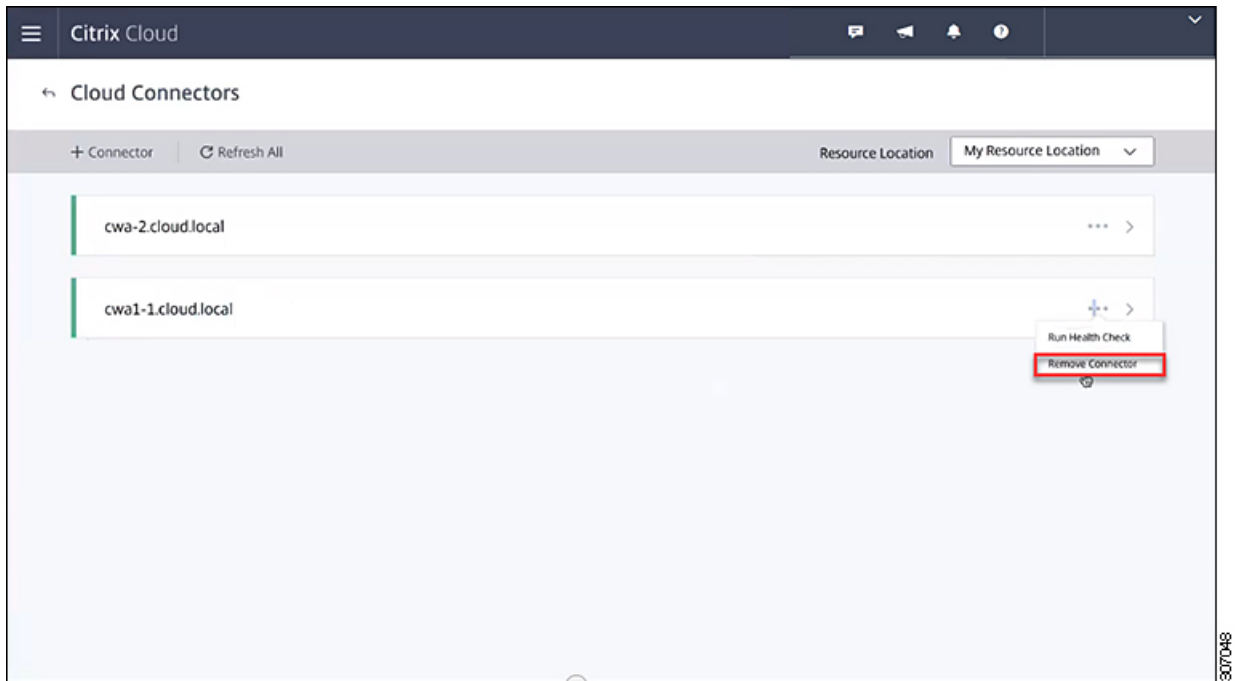
Figure 6: Resource Locations Page



**Step 10** Click **Cloud Connection** to view the available Citrix Cloud Connectors for the resource location.

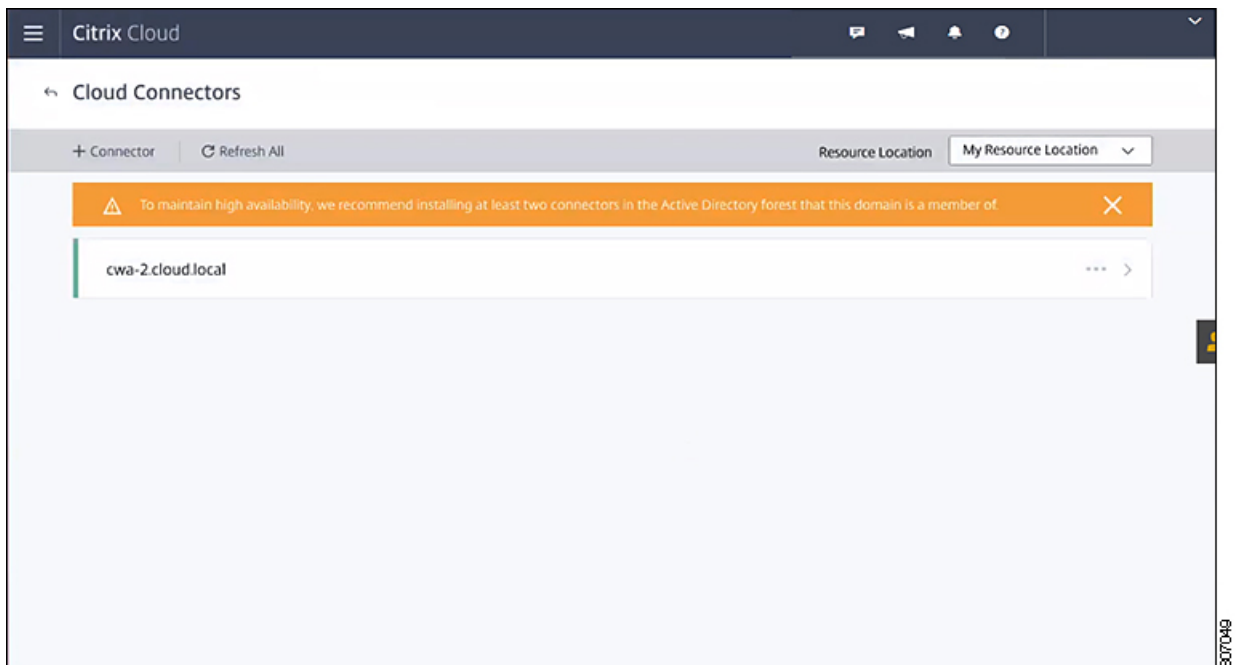
**Step 11** Select the Citrix Cloud Connector that you want to delete from the Cloud Connections page, and then right-click and select **Remove Connector** from the menu.

Figure 7: Cloud Connections Page



The Citrix Cloud Connector is removed from the Cloud Connections page of Resource Locations.

Figure 8: Cloud Connections Page with Removed Citrix Cloud Connector



At this point, you can restart the sequence in configuring the Cisco HyperFlex system to connect to Citrix Cloud as outlined in this chapter.

---