



# Accessing the Citrix Workspace Appliance Page in HyperFlex Connect

---

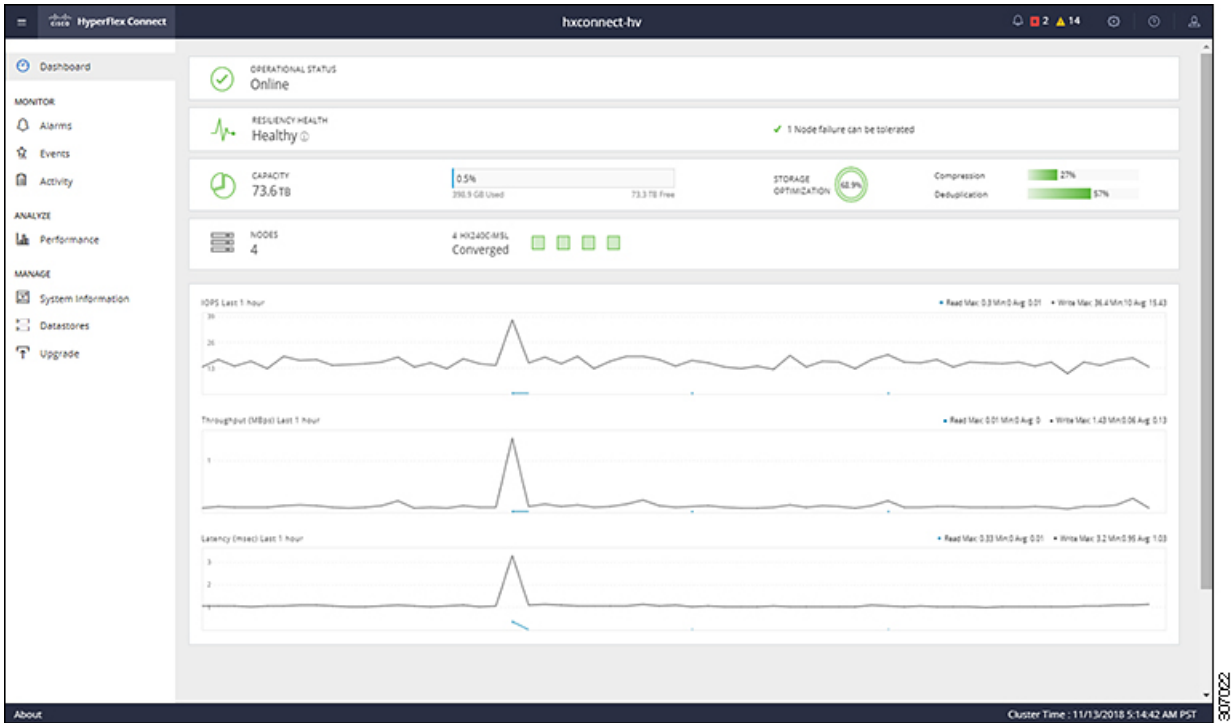
- [Accessing the Citrix Workspace Appliance Page in HyperFlex Connect, on page 1](#)

## Accessing the Citrix Workspace Appliance Page in HyperFlex Connect

The following procedure details the steps that are required to access the Citrix Workspace Appliance page in the HyperFlex Connect GUI:

- 
- Step 1** Navigate to `https://<hyperflex_cluster_mgmt_ip>` using a supported web browser.
  - Step 2** Log into HyperFlex Connect using an SSO account and password with administrative privileges (for example, `hxadmin@domain.local`).
  - Step 3** In the upper right corner of HyperFlex Connect, click the **Settings** menu icon (represented by a Gear icon).

Figure 1: HyperFlex Connect Settings Menu



**Step 4** Under **Integrations**, click **Citrix**. The Citrix Workspace Appliance page appears.

Figure 2: Selecting Integrations > Citrix

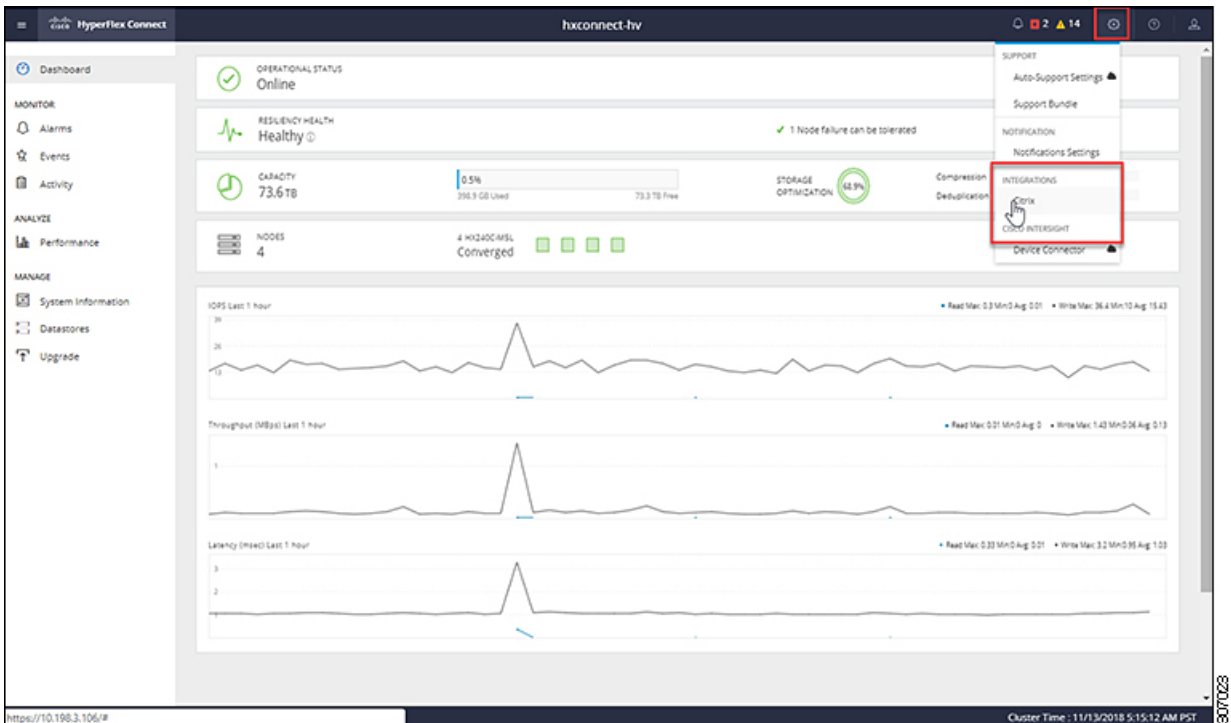
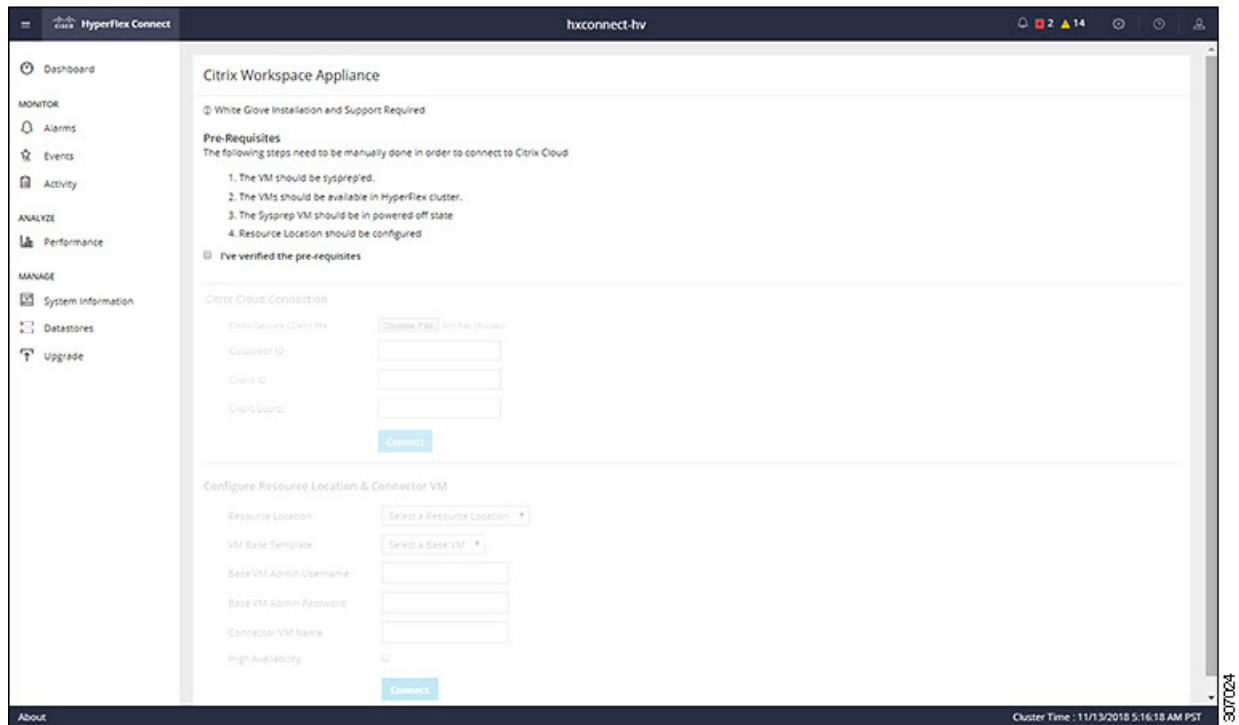


Figure 3: Citrix Workspace Appliance Page



**Step 5** Review the prerequisites that are outlined on the Citrix Workspace Appliance page and then click the check box. See [Prerequisites](#) for more details.

