



# Configuring Cisco HyperFlex as a Citrix Workspace Appliance

---

- [Prerequisites, on page 1](#)
- [Creating a Secure Client in Citrix Cloud, on page 2](#)
- [Specifying Customer and Client Identifier Information, on page 3](#)
- [Configuring Resource Location and Cloud Connector VM, on page 6](#)
- [Verifying the Cloud Connector VM, on page 7](#)

## Prerequisites

The following prerequisites are required for Cisco HyperFlex to operate as a Citrix Workspace Appliance in a Citrix Cloud environment:

- Install and configure Cisco HyperFlex HX-Series nodes in a cluster with Microsoft Hyper-V Server 2016 running 3.5(2a) or later, see the [Cisco HyperFlex Systems Installation Guide for Microsoft Hyper-V](#).
- Ensure that the Microsoft System Center Virtual Machine Manager (VMM) Console is installed on your server. See [Microsoft System Center Virtual Machine Manager virtualization environments](#) for background details.
- Create and deploy a virtual machine (VM) as the base VM used for the connector VM. Once deployed, use the Microsoft System Preparation (Sysprep) tool to prepare the base VM. Ensure that the base VM is in a power-off state.



---

**Note** We recommend that you configure the Sysprep tool to boot Windows to Out-of-Box Experience (OOBE). OOBE utilizes an OOBE.xml file that includes a set of specific default values. See [OOBE.xml](#) for details.

---

- Create a datastore on the HX Data Platform (see the [Cisco HyperFlex Data Platform Administration Guide](#)), and then deploy the base VM on that datastore.
- Confirm that you have a:
  - Citrix Cloud account. For detailed instructions, see [Sign up for Citrix Cloud](#).

- Citrix Virtual Apps and Desktops Service subscription or trial on Citrix Cloud. For detailed instructions, see [Citrix Cloud services subscriptions](#) in the Citrix product documentation.
- Set up a resource location containing the resources that are required to deliver applications and desktops to subscribers. For detailed instructions, see [Set up resource locations](#) in the Citrix product documentation.



**Note** For an overview on system requirements for Citrix Virtual Apps and Desktop Service, see [System Requirements](#) in the Citrix product documentation.

## Creating a Secure Client in Citrix Cloud

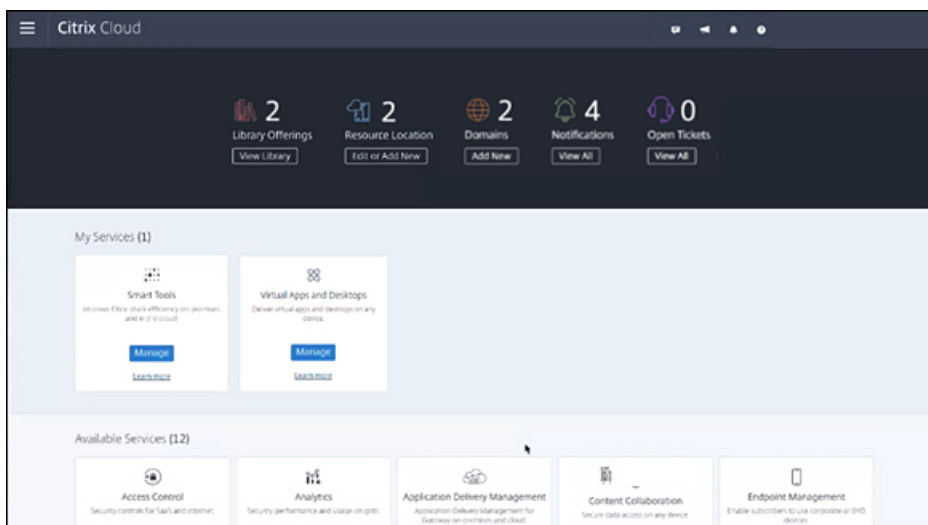
The following procedure outlines how to create a secure client secret key from Citrix Cloud using API access:

**Step 1** Enter your Citrix credentials (Citrix.com, My Citrix, or Citrix Cloud) to securely log into your Citrix Cloud account. Be sure to sign in with the email address and password you provided when you signed up.

If your company allows you to sign-in to Citrix Cloud using their company credentials instead of a Citrix account, click **Sign in with my company credentials** and enter your company's sign in URL for your account.

**Step 2** After signing into the Citrix Cloud GUI, verify that there is an active Citrix Virtual Apps and Desktops Service subscription or trial on Citrix Cloud.

**Figure 1: Citrix Cloud**

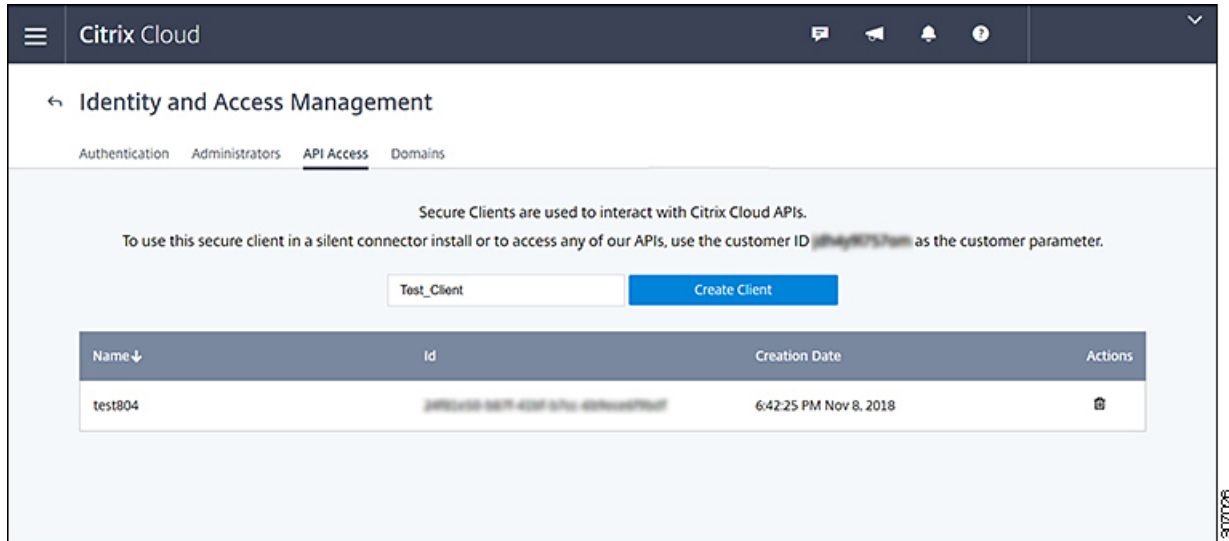


**Step 3** Select **Identity and Access Management** from the menu in the Citrix Cloud GUI.

**Step 4** On the Identity and Access Management page, click **API Access**. The API Access page appears.

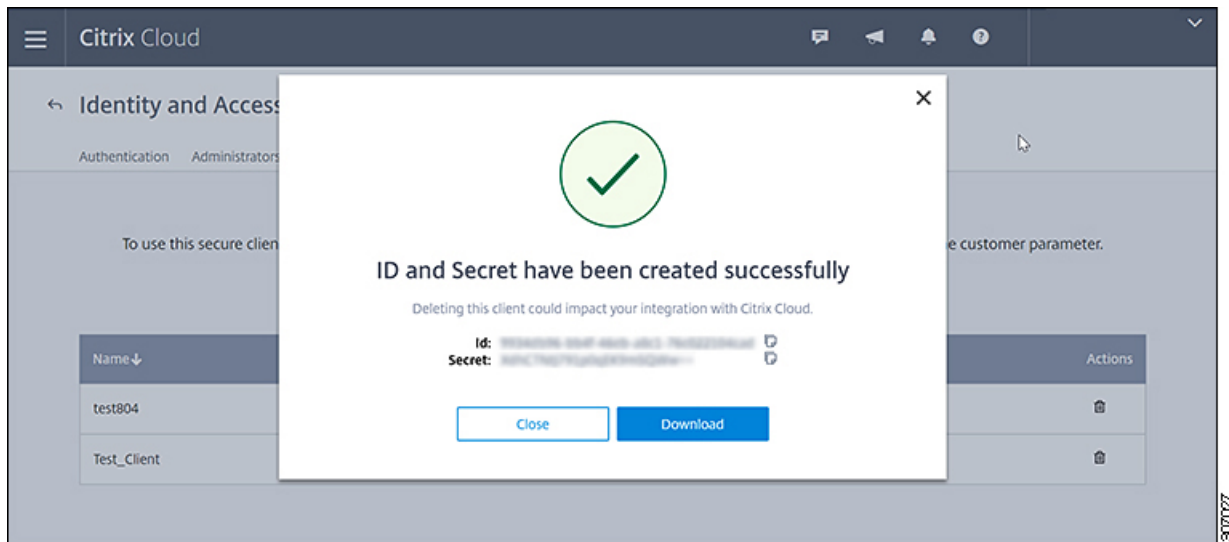
**Step 5** Enter your secure client secret in the Name Your Secure Client text box, and then click **Create Client**.

Figure 2: Identity and Access Management Page &gt; API Access



- Step 6** Download the secure client CSV file containing the client ID and secret from the API Access page. It is named `secureclient.csv`.

Figure 3: Secure Client CSV File Creation Confirmation Screen

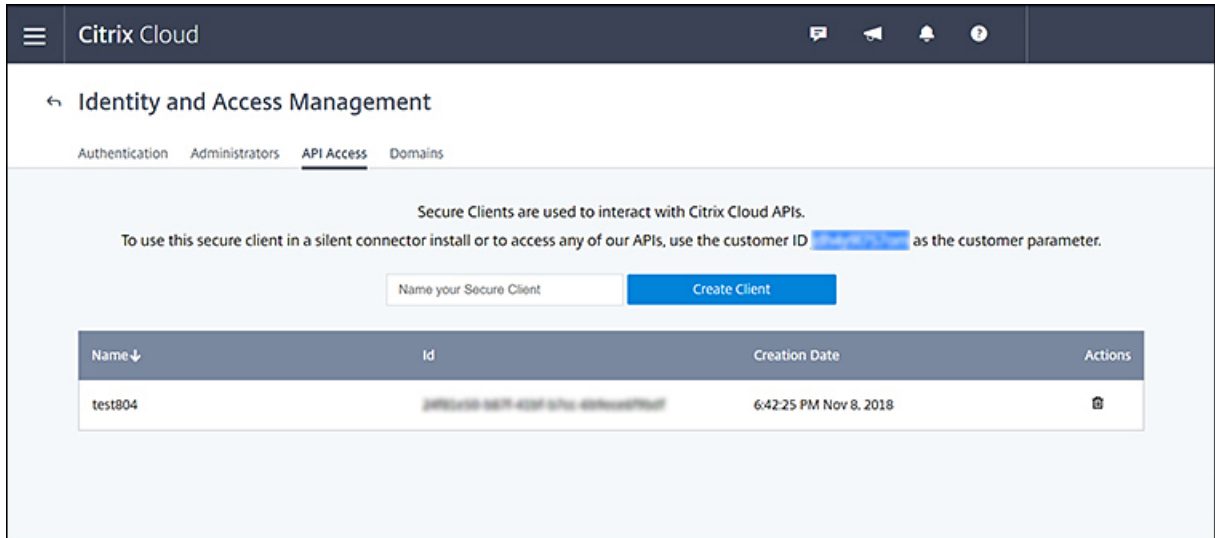


## Specifying Customer and Client Identifier Information

The following procedure outlines how to locate a customer ID and client ID from Citrix Cloud and enter this information (including the client secret) on the HyperFlex Connect GUI:

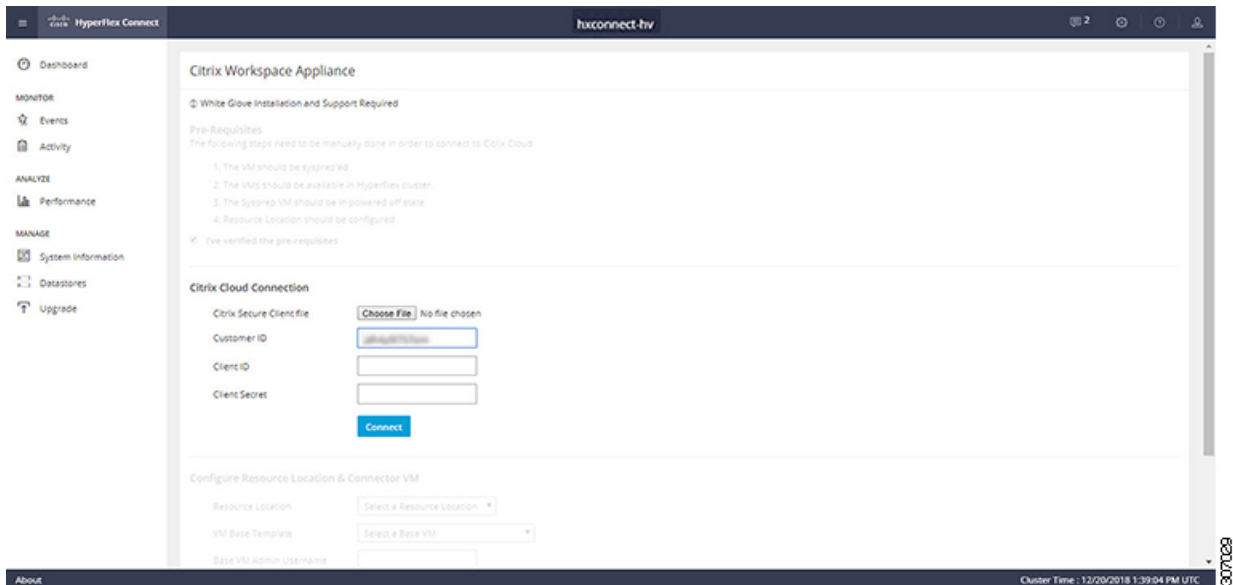
**Step 1** In the Citrix Cloud GUI, on the API Access page of Identity and Access Management, copy the customer ID.

**Figure 4: Copying the Customer ID from the API Access Page (Citrix Cloud)**



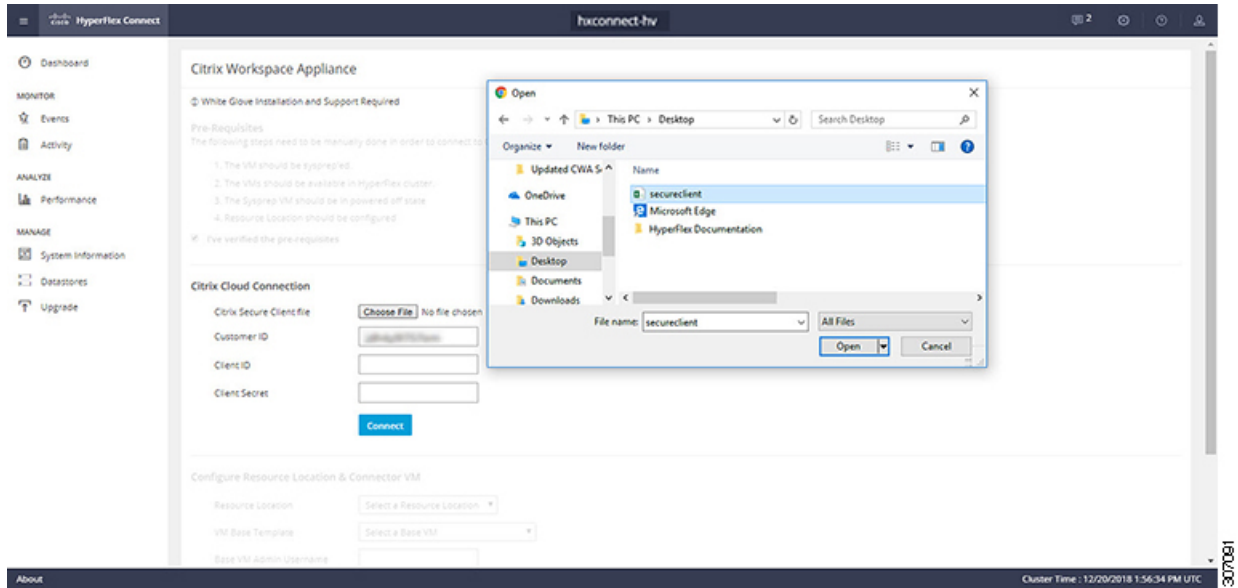
**Step 2** 2. In the Cisco HyperFlex Connect GUI, paste the customer ID in the Customer ID text box of the Citrix Workspace Appliance page.

**Figure 5: Pasting the Customer ID on the Citrix Workspace Appliance Page (HyperFlex Connect)**



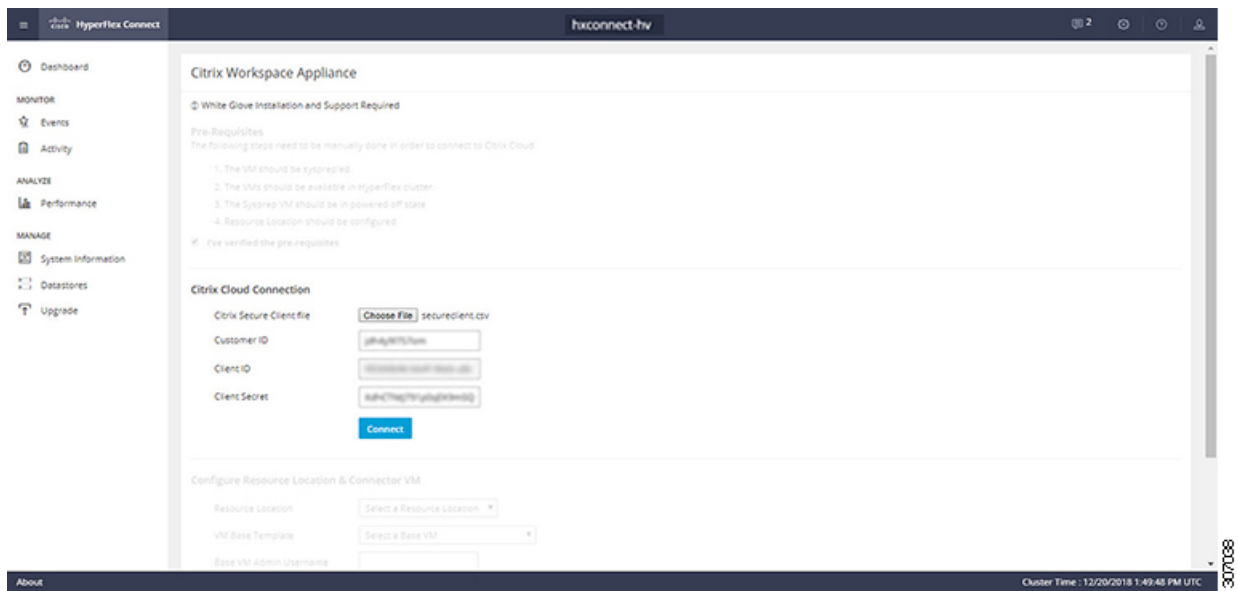
**Step 3** Click **Choose File** and navigate to the secure client CSV file containing the client ID and secret created in the Citrix Cloud GUI (see [Creating a Secure Client in Citrix Cloud, on page 2](#)).

Figure 6: Navigating to the Secure Client CSV File



The Client ID and Client Secret fields are automatically populated with the client ID and secret from the secure client CSV file.

Figure 7: Client ID and Client Secret in the Citrix Workspace Appliance Page (HyperFlex Connect)



**Step 4** Click **Connect** to establish the connection from HyperFlex Connect to Citrix Cloud.

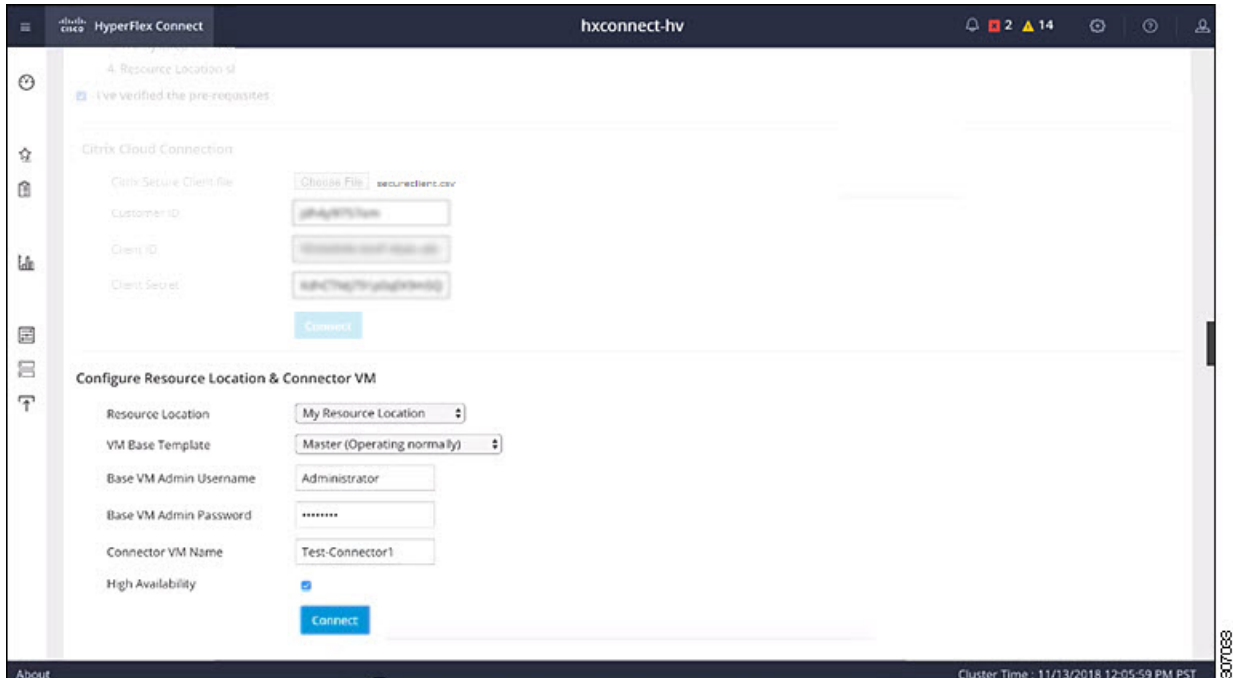
# Configuring Resource Location and Cloud Connector VM

The following procedure outlines how to specify information such as the resource location, VM base template, and Cloud Connector VM name in the HyperFlex Connect GUI:

**Step 1** On the Citrix Workspace Appliance page, under Configure Resource Location & Connector VM, specify the following information:

- **Resource Location**—For the previously created resource location for the Cloud Connector see [Prerequisites, on page 1](#) for more details. Existing resource locations that are created in Citrix Cloud appear in the drop-down list.
- **VM Base Template**—The VM base image available on the Cisco HyperFlex cluster. This selection is the previously created Sysprep VM.
- **Base VM Admin Username**—Administrative account username for logging into the base VM.
- **Base VM Admin Password**—Administrative account password for logging into the base VM.
- **Connector VM Name**—Name for the Citrix Connector VM to be created.
- **High Availability (HA)**—(Optional) By default, the High Availability check box is enabled and two connector nodes are automatically created. Uncheck the High Availability check box if you want to disable high availability for the connector nodes.

**Figure 8: Configure Resource Location & Connector VM of Citrix Workspace Appliance Page**



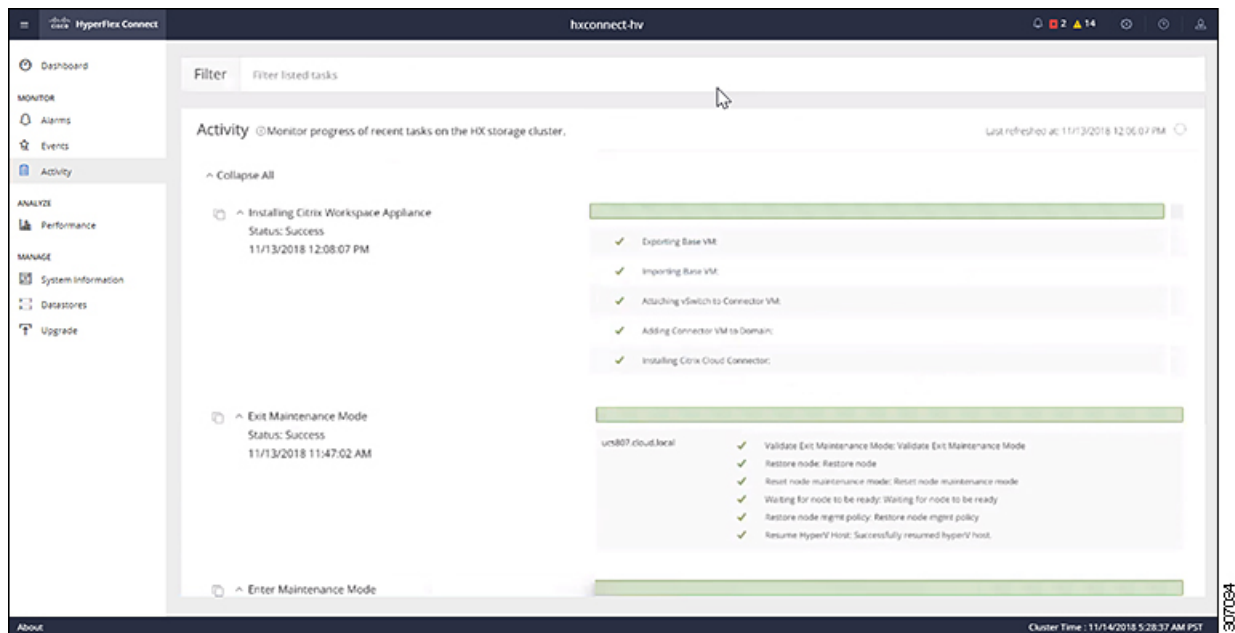
**Step 2** Click **Connect**. This action initiates the automatic installation sequence that comprises of the following workflow until the installation process successfully completes. The installation process can take approximately 2 to 3 minutes to complete.

The steps in the installation process include:

- Export Base VM
- Import Base VM
- Attach vSwitch to Citrix Cloud Connector VM.
- Add Citrix Cloud Connector VM to Domain (Domain Join).
- Install Citrix Connector at the on-premises side (resource location).

**Step 3** Click **Activity** to access the Activity page. You can view the installation sequence from the Activity page.

**Figure 9: Activity Page—Cloud Connector Installation Sequence**



## Verifying the Cloud Connector VM

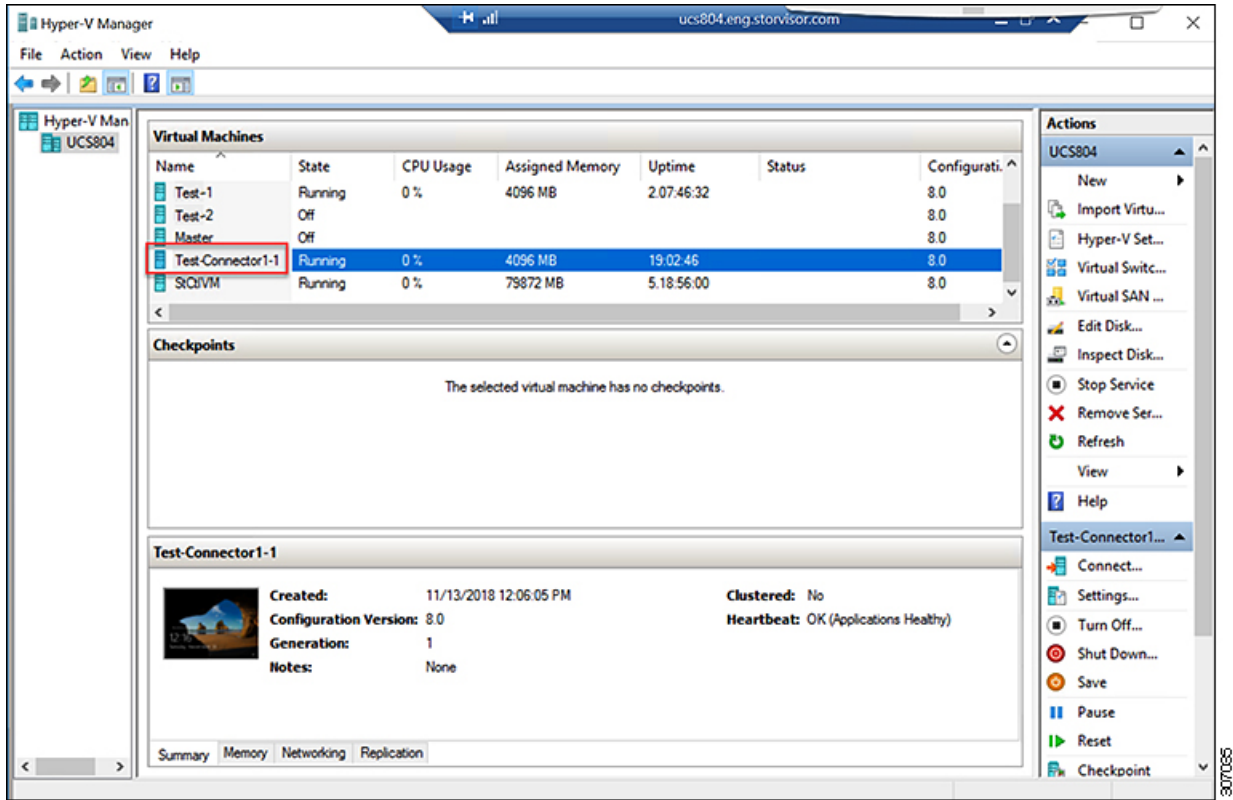
The following procedure outlines how to connect to the new Citrix Cloud Connector VM using Hyper-V Manager and confirm that it has been properly installed. This procedure uses the Microsoft Remote Desktop Protocol (RDP) to establish a connection to the Hyper-V instance and launch Hyper-V Manager to perform the verification.

**Step 1** Log into the Hyper-V instance using a Remote Desktop connection.

**Step 2** Launch the Hyper-V Manager from the Microsoft Windows Server.

**Step 3** Verify that the installed Citrix Cloud Connector VM appears in the list of Virtual Machines in the HX cluster along with the original base VM.

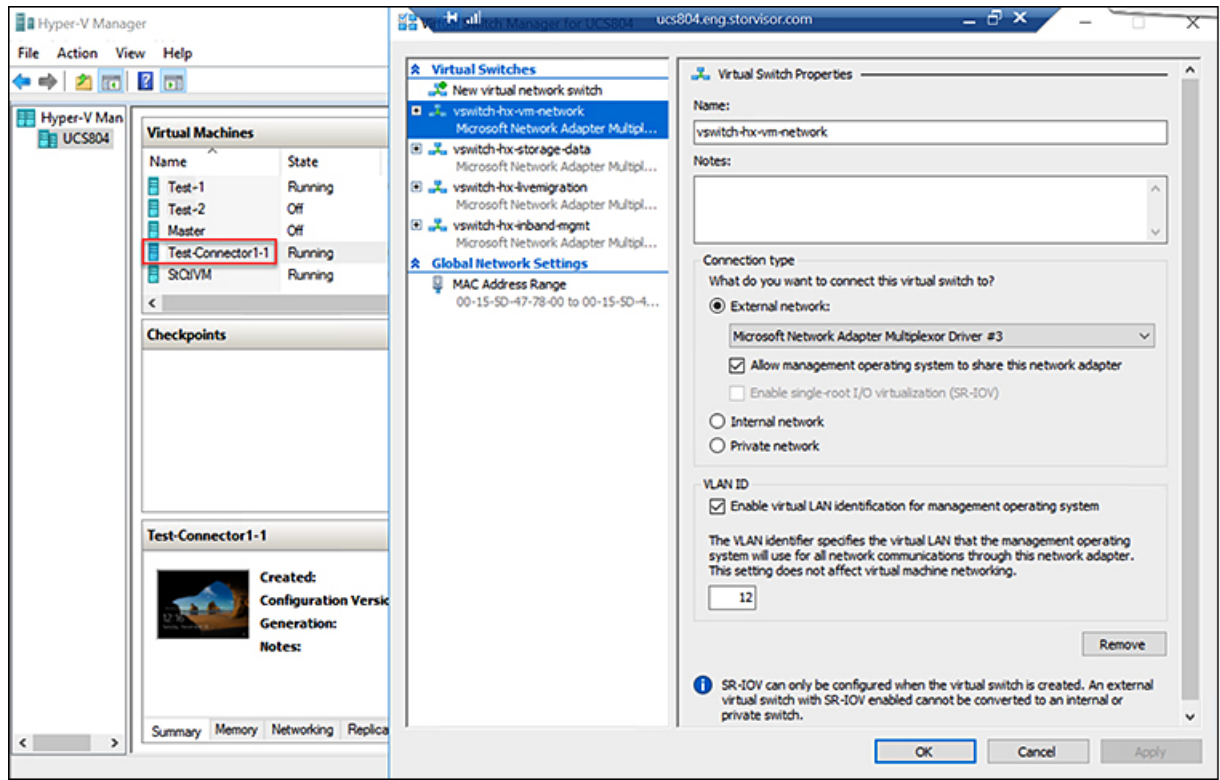
Figure 10: Hyper-V Manager with Installed Citrix Cloud Connector VM



**Step 4** If desired, you can verify the options of the newly created Citrix Cloud Connector VM.



Figure 11: Verifying Citrix Cloud Connector VM Settings in Hyper-V Manager—Example 1



307086

