



# Using the Cisco NX-OS Setup Utility

---

This chapter contains these sections:

- [About the Cisco NX-OS Setup Utility, on page 1](#)
- [Prerequisites for the Setup Utility, on page 2](#)
- [Setting Up Your Cisco NX-OS Device, on page 3](#)
- [Additional References for the Setup Utility, on page 7](#)

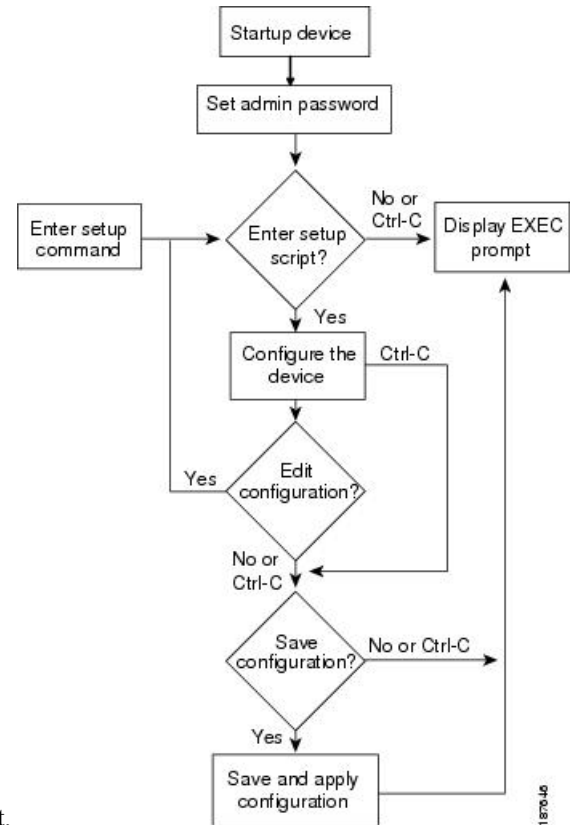
## About the Cisco NX-OS Setup Utility

The Cisco NX-OS setup utility is an interactive command-line interface (CLI) mode that guides you through a basic (also called a startup) configuration of the system. The setup utility allows you to configure only enough connectivity for system management.

The setup utility allows you to build an initial configuration file using the System Configuration Dialog. The setup starts automatically when a device has no configuration file in NVRAM. The dialog guides you through initial configuration. After the file is created, you can use the CLI to perform additional configuration.

You can press **Ctrl-C** at any prompt to skip the remaining configuration options and proceed with what you have configured up to that point, except for the administrator password. If you want to skip answers to any questions, press **Enter**. If a default answer is not available (for example, the device hostname), the device uses what was previously configured and skips to the next question.

Figure 1: Setup Script Flow



This figure shows how to enter and exit the setup script.

You use the setup utility mainly for configuring the system initially, when no configuration is present. However, you can use the setup utility at any time for basic device configuration. The setup utility keeps the configured values when you skip steps in the script. For example, if you have already configured the mgmt0 interface, the setup utility does not change that configuration if you skip that step. However, if there is a default value for the step, the setup utility changes to the configuration using that default, not the configured value. Be sure to carefully check the configuration changes before you save the configuration.



**Note** Be sure to configure the IPv4 route, the default network IPv4 address, and the default gateway IPv4 address to enable SNMP access. If you enable IPv4 routing, the device uses the IPv4 route and the default network IPv4 address. If IPv4 routing is disabled, the device uses the default gateway IPv4 address.



**Note** The setup script only supports IPv4.

## Prerequisites for the Setup Utility

The setup utility has the following prerequisites:

- Have a password strategy for your network environment.
- Connect the console port on the supervisor module to the network. If you have dual supervisor modules, connect the console ports on both supervisor modules to the network.
- Connect the Ethernet management port on the supervisor module to the network. If you have dual supervisor modules, connect the Ethernet management ports on both supervisor modules to the network.

## Setting Up Your Cisco NX-OS Device

To configure basic management of the Cisco NX-OS device using the setup utility, follow these steps:

### Procedure

---

**Step 1** Power on the device.

**Step 2** Enable or disable password-strength checking.

A strong password has the following characteristics:

- At least eight characters long
- Does not contain many consecutive characters (such as "abcd")
- Does not contain many repeating characters (such as "aaabbb")
- Does not contain dictionary words
- Does not contain proper names
- Contains both uppercase and lowercase characters
- Contains numbers

#### Example:

```
---- System Admin Account Setup ----  
Do you want to enforce secure password standard (yes/no) [y]: y
```

**Step 3** Enter the new password for the administrator.

#### Note

If a password is trivial (such as a short, easy-to-decipher password), your password configuration is rejected. Passwords are case sensitive. Be sure to configure a strong password that has at least eight characters, both uppercase and lowercase letters, and numbers.

#### Example:

```
Enter the password for "admin": <password>  
Confirm the password for "admin": <password>  
---- Basic System Configuration Dialog ----
```

This setup utility will guide you through the basic configuration of the system. Setup configures only enough connectivity for management of the system.

Please register Cisco Nexus 9000 Family devices promptly with your supplier. Failure to register may affect response times for initial service calls. Nexus devices must be registered to receive entitled support services.

Press Enter at anytime to skip a dialog. Use ctrl-c at anytime to skip the remaining dialogs.

**Step 4** Enter the setup mode by entering **yes**.

**Example:**

Would you like to enter the basic configuration dialog (yes/no): **yes**

**Step 5** Create additional accounts by entering **yes** (**no** is the default).

**Example:**

Create another login account (yes/no) [n]: **yes**

a) Enter the user login ID.

**Example:**

Enter the User login Id : *user\_login*

**Caution**

Usernames must begin with an alphanumeric character and can contain only these special characters: (+ = . \_ \ -). The # and ! symbols are not supported. If the username contains characters that are not allowed, the specified user is unable to log in.

b) Enter the user password.

**Example:**

Enter the password for "user1": *user\_password*  
Confirm the password for "user1": *user\_password*

c) Enter the default user role.

**Example:**

Enter the user role (network-operator|network-admin) [network-operator]: *default\_user\_role*

For information on the default user roles, see the *Cisco Nexus 9000 Series NX-OS Security Configuration Guide*.

**Step 6** Configure an SNMP community string by entering **yes**.

**Example:**

```
Configure read-only SNMP community string (yes/no) [n]: yes  
SNMP community string : snmp_community_string
```

For information on SNMP, see the *Cisco Nexus 9000 Series NX-OS System Management Configuration Guide*.

**Step 7** Enter a name for the device (the default name is switch).

**Example:**

```
Enter the switch name: switch_name
```

**Step 8** Configure out-of-band management by entering **yes**. You can then enter the mgmt0 IPv4 address and subnet mask.

**Note**

You can only configure IPv4 address in the setup utility. For information on configuring IPv6, see the *Cisco Nexus 9000 Series NX-OS Unicast Routing Configuration Guide*.

**Example:**

```
Continue with Out-of-band (mgmt0) management configuration? [yes/no]: yes  
Mgmt0 IPv4 address: mgmt0_ip_address  
Mgmt0 IPv4 netmask: mgmt0_subnet_mask
```

**Step 9** Configure the IPv4 default gateway (recommended) by entering **yes**. You can then enter its IP address.

**Example:**

```
Configure the default-gateway: (yes/no) [y]: yes  
IPv4 address of the default-gateway: default_gateway
```

**Step 10** Configure advanced IP options such as the static routes, default network, DNS, and domain name by entering **yes**.

**Example:**

```
Configure Advanced IP options (yes/no)? [n]: yes
```

**Step 11** Configure a static route (recommended) by entering **yes**. You can then enter its destination prefix, destination prefix mask, and next hop IP address.

**Example:**

```
Configure static route: (yes/no) [y]: yes  
Destination prefix: dest_prefix  
Destination prefix mask: dest_mask  
Next hop ip address: next_hop_address
```

**Step 12** Configure the default network (recommended) by entering **yes**. You can then enter its IPv4 address.

**Note**

The default network IPv4 address is the same as the destination prefix in the static route configuration.

**Example:**

```
Configure the default network: (yes/no) [y]: yes  
Default network IP address [dest_prefix]: dest_prefix
```

**Step 13** Configure the DNS IPv4 address by entering **yes**. You can then enter the address.

**Example:**

```
Configure the DNS IP address? (yes/no) [y]: yes  
DNS IP address: ipv4_address
```

**Step 14** Configure the default domain name by entering **yes**. You can then enter the name.

**Example:**

```
Configure the DNS IP address? (yes/no) [y]: yes  
DNS IP address: ipv4_address
```

**Step 15** Enable the Telnet service by entering **yes**.

**Example:**

```
Enable the telnet service? (yes/no) [y]: yes
```

**Step 16** Enable the SSH service by entering **yes**. You can then enter the key type and number of key bits. For more information, see the *Cisco Nexus 9000 Series NX-OS Security Configuration Guide*.

**Example:**

```
Enable the ssh service? (yes/no) [y]: yes  
Type of ssh key you would like to generate (dsa/rsa) : key_type  
Number of key bits <768-2048> : number_of_bits
```

**Step 17** Configure the NTP server by entering **yes**. You can then enter its IP address. For more information, see the *Cisco Nexus 9000 Series NX-OS System Management Configuration Guide*.

**Example:**

```
Configure NTP server? (yes/no) [n]: yes  
NTP server IP address: ntp_server_IP_address
```

**Step 18** Specify a default interface layer (L2 or L3).

**Example:**

```
Configure default interface layer (L3/L2) [L3]: interface_layer
```

**Step 19** Enter the default switchport interface state (shutdown or no shutdown). A shutdown interface is in an administratively down state. For more information, see the *Cisco Nexus 9000 Series NX-OS Interfaces Configuration Guide*.

**Example:**

```
Configure default switchport interface state (shut/noshut) [shut]: default_state
```

**Step 20** Enter the best practices profile for control plane policing (CoPP). For more information, see the *Cisco Nexus 9000 Series NX-OS Security Configuration Guide*.

**Example:**

```
Configure best practices CoPP profile (strict/moderate/lenient/none) [strict]: moderate
```

The system now summarizes the complete configuration and asks if you want to edit it.

**Step 21** Continue to the next step by entering **no**. If you enter **yes**, the setup utility returns to the beginning of the setup and repeats each step.

**Example:**

```
Would you like to edit the configuration? (yes/no) [y]: yes
```

**Step 22** Use and save this configuration by entering **yes**. If you do not save the configuration at this point, none of your changes are part of the configuration the next time the device reboots. Enter **yes** to save the new configuration. This step ensures that the boot variables for the nx-os image are also automatically configured.

**Example:**

```
Use this configuration and save it? (yes/no) [y]: yes
```

**Caution**

If you do not save the configuration at this point, none of your changes are part of the configuration the next time that the device reboots. Enter **yes** to save the new configuration to ensure that the boot variables for the nx-os image are also automatically configured.

## Additional References for the Setup Utility

This section includes additional information related to using the setup utility.

### Related Documents for the Setup Utility

Related Topic	Document Title
Licensing	<i>Cisco NX-OS Licensing Guide</i>
SSH and Telnet	<i>Cisco Nexus 9000 Series NX-OS Security Configuration Guide</i>
User roles	<i>Cisco Nexus 9000 Series NX-OS Security Configuration Guide</i>
IPv4 and IPv6	<i>Cisco Nexus 9000 Series NX-OS Unicast Routing Configuration Guide</i>

Related Topic	Document Title
SNMP and NTP	<i>Cisco Nexus 9000 Series NX-OS System Management Configuration Guide</i>