



Configuring VXLAN EVPN Multi-Site

This chapter contains the following sections:

- [About VXLAN EVPN Multi-Site, on page 1](#)
- [About VXLAN EVPN Multi-Site with IPv6 Underlay, on page 2](#)
- [Dual RD Support for Multi-Site, on page 3](#)
- [Interoperability with EVPN Multi-Homing Using ESI for Multi-Site BGW \(Anycast and vPC BGW\) , on page 4](#)
- [Guidelines and Limitations for VXLAN EVPN Multi-Site, on page 4](#)
- [Guidelines and Limitations for VXLAN EVPN Multi-Site with IPv6 Underlay, on page 8](#)
- [Enabling VXLAN EVPN Multi-Site, on page 9](#)
- [Enabling VXLAN EVPN Multi-Site with IPv6 Multicast Underlay, on page 10](#)
- [Configuring Dual RD Support for Multi-Site, on page 12](#)
- [Configuring VNI Dual Mode, on page 14](#)
- [Configuring Fabric/DCI Link Tracking, on page 15](#)
- [Configuring Fabric External Neighbors, on page 15](#)
- [Configuring VXLAN EVPN Multi-Site Storm Control, on page 17](#)
- [Verifying VXLAN EVPN Multi-Site Storm Control, on page 18](#)
- [Multi-Site with vPC Support, on page 18](#)
- [Configuration Example for Multi-Site with Asymmetric VNIs, on page 23](#)
- [TRM with Multi-Site, on page 24](#)

About VXLAN EVPN Multi-Site

The VXLAN EVPN Multi-Site solution interconnects two or more BGP-based Ethernet VPN (EVPN) sites/fabrics (overlay domains) in a scalable fashion over an IP-only network. This solution uses border gateways (BGWs) in anycast or vPC mode to terminate and interconnect two sites. The BGWs provide the network control boundary that is necessary for traffic enforcement and failure containment functionality.

In the BGP control plane for releases prior to Cisco NX-OS Release 9.3(5), BGP sessions between the BGWs rewrite the next hop information of EVPN routes and reoriginate them. Beginning with Cisco NX-OS Release 9.3(5), reorigination is always enabled (with either single or dual route distinguishers), and rewrite is not performed. For more information, see [Dual RD Support for Multi-Site, on page 3](#).

VXLAN Tunnel Endpoints (VTEPs) are only aware of their overlay domain internal neighbors, including the BGWs. All routes external to the fabric have a next hop on the BGWs for Layer 2 and Layer 3 traffic.

The BGW is the node that interacts with nodes within a site and with nodes that are external to the site. For example, in a leaf-spine data center fabric, it can be a leaf, a spine, or a separate device acting as a gateway to interconnect the sites.

The VXLAN EVPN Multi-Site feature can be conceptualized as multiple site-local EVPN control planes and IP forwarding domains interconnected via a single common EVPN control and IP forwarding domain. Every EVPN node is identified with a unique site-scope identifier. A site-local EVPN domain consists of EVPN nodes with the same site identifier. BGWs on one hand are also part of the site-specific EVPN domain and on the other hand a part of a common EVPN domain to interconnect with BGWs from other sites. For a given site, these BGWs facilitate site-specific nodes to visualize all other sites to be reachable only via them. This means:

- Site-local bridging domains are interconnected only via BGWs with bridging domains from other sites.
- Site-local routing domains are interconnected only via BGWs with routing domains from other sites.
- Site-local flood domains are interconnected only via BGWs with flood domains from other sites.

Selective Advertisement is defined as the configuration of the per-tenant information on the BGW. Specifically, this means IP VRF or MAC VRF (EVPN instance). In cases where external connectivity (VRF-lite) and EVPN Multi-Site coexist on the same BGW, the advertisements are always enabled.

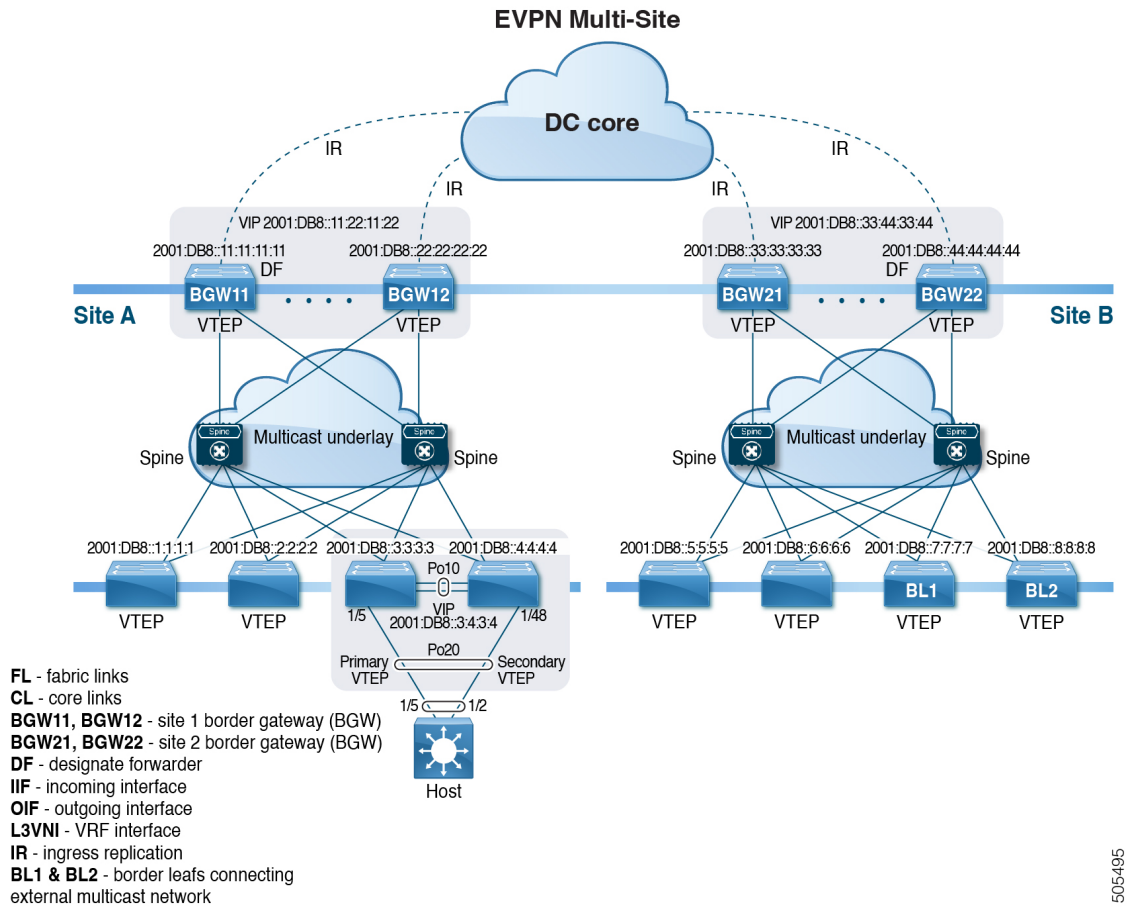


Note The MVPN VRI ID must be configured for TRM on anycast BGW if the site ID is greater than two bytes. The same VRI ID needs to be configured in all anycast BGWs that are part of the same site. However, the VRI ID must be unique within the network. That is, other anycast BGWs or vPC leaves must use different VRI IDs.

About VXLAN EVPN Multi-Site with IPv6 Underlay

Beginning with Cisco NX-OS Release 10.4(3)F, the support is provided for VXLAN EVPN Multi-Site with IPv6 Underlay.

Figure 1: Topology - VXLAN EVPN Multi-Site with IPv6 Underlay



The above topology shows four leafs and two spines in the VXLAN EVPN fabric and two Anycast BGWs. Inside the fabric, the underlay is an IPv6 Multicast running PIMv6. RP is positioned in the spine with anycast RP. BGWs support VXLAN with IPv6 Protocol-Independent Multicast (PIMv6) Any-Source Multicast (ASM) on the fabric side and Ingress Replication (IPv6) on the DCI side.

Dual RD Support for Multi-Site

Beginning with Cisco NX-OS Release 9.3(5), VXLAN EVPN Multi-Site supports route reorigination with dual route distinguishers (RDs). This behavior is enabled automatically.

Each VRF or L2VNI tracks two RDs: a primary RD (which is unique) and a secondary RD (which is the same across BGWs). Reoriginated routes are advertised with the secondary type-0 RD (site-id:VNI). All other routes are advertised with the primary RD. The secondary RD is allocated automatically once the router is in Multi-Site BGW mode.

If the site ID is greater than 2 bytes, the secondary RD can't be generated automatically on the Multi-Site BGW, and the following message appears:

```
%BGP-4-DUAL_RD_GENERATION_FAILED: bgp- [12564] Unable to generate dual RD on EVPN multisite border gateway. This may increase memory consumption on other BGP routers receiving re-originated EVPN routes. Configure router bgp <asn> ; rd dual id <id> to avoid it.
```

In this case, you can either manually configure the secondary RD value or disable dual RDs. For more information, see [Configuring Dual RD Support for Multi-Site, on page 12](#).

Interoperability with EVPN Multi-Homing Using ESI for Multi-Site BGW (Anycast and vPC BGW)

Beginning Cisco NX-OS Release 10.2(2)F, EVPN MAC/IP routes (Type 2) with non-reserved as well as with reserved ESI (0 or MAX-ESI) values are evaluated for forwarding (ESI RX). The definition of the EVPN MAC/IP route resolution is defined in [RFC 7432 Section 9.2.2](#).

EVPN MAC/IP routes (Type 2) -

- with reserved ESI value (0 or MAX-ESI) are resolved solely by the MAC/IP route alone (BGP next-hop within Type 2).
- with non-reserved ESI value are resolved only if accompanied by a per-ES Ethernet Auto-Discovery route (Type 1, per-ES EAD) is present.

In addition to the MAC/IP route resolution as mentioned above, the Multi-Site BGW supports the forward, rewrite and re-originate of MAC/IP routes with reserved and non-reserved ESI values. In all these cases, the per-ES EAD route is re-originated by the Multi-Site BGW.

The EVPN MAC/IP route resolution with the different ESI values is supported on Cisco Nexus 9300-EX, -FX, -FX2, -FX3, and -GX Platform Switches in Anycast and vPC Border Gateway mode.

vPC BGW is not supported.

Guidelines and Limitations for VXLAN EVPN Multi-Site

VXLAN EVPN Multi-Site has the following configuration guidelines and limitations:

- The following switches support VXLAN EVPN Multi-Site:
 - Cisco Nexus 9300-EX and 9300-FX platform switches (except Cisco Nexus 9348GC-FXP platform switches)
 - Cisco Nexus 9300-FX2 platform switches
 - Cisco Nexus 9300-FX3 platform switches
 - Cisco Nexus 9300-GX platform switches
 - Cisco Nexus 9300-GX2 platform switches
 - Cisco Nexus 9332D-H2R switches
 - Cisco Nexus 93400LD-H1 switches
 - Cisco Nexus 9364C-H1 switches
 - Cisco Nexus 9800 platform switches with X9836DM-A and X98900CD-A line cards
 - Cisco Nexus 9500 platform switches with -EX or -FX or -GX line cards



Note Cisco Nexus 9500 platform switches with -R/RX line cards don't support VXLAN EVPN Multi-Site.

- The **evpn multisite dci-tracking** is mandatory for anycast BGWs and vPC BGW DCI links.

The **evpn multisite fabric-tracking** is mandatory only for anycast BGWs. For vPC based BGWs, this command is not mandatory. The NVE Interface will be brought up with just the dci tracked link in the up state.

- Cisco Nexus 9332C and 9364C platform switches can be BGWs.
- In a VXLAN EVPN Multi-Site deployment, when you use the ttag feature, make sure that the ttag is stripped (**ttag-strip**) on BGW's DCI interfaces that connect to the cloud. To elaborate, if the ttag is attached to non-Nexus 9000 devices that do not support EtherType 0x8905, stripping of the ttag is required. However, BGW back-to-back model of DCI does not require ttag stripping.
- VXLAN EVPN Multi-Site and Tenant Routed Multicast (TRM) are supported between sources and receivers deployed across different sites.
- The Multi-Site BGW allows the coexistence of Multi-Site extensions (Layer 2 unicast/multicast and Layer 3 unicast) as well as Layer 3 unicast and multicast external connectivity.
- In TRM with multi-site deployments, all BGWs receive traffic from fabric. However, only the designated forwarder (DF) BGW forwards the traffic. All other BGWs drop the traffic through a default drop ACL. This ACL is programmed in all DCI tracking ports. Don't remove the **evpn multisite dci-tracking** configuration from the DCI uplink ports. If you do, you remove the ACL, which creates a nondeterministic traffic flow in which packets can be dropped or duplicated instead of deterministically forwarded by only one BGW, the DF.
- Anycast mode can support up to six BGWs per site.
- BGWs in a vPC topology are supported.
- Multicast Flood Domain between inter-site/fabric BGWs isn't supported.
- iBGP EVPN Peering between BGWs of different fabrics/sites isn't supported.
- The **peer-type fabric-external** command configuration is required only for VXLAN Multi-Site BGWs (this command must not be used when peering with non-Cisco equipment).



Note The **peer-type fabric-external** command configuration is not required for pseudo BGWs.

- Anycast mode can support only Layer 3 services that are attached to local interfaces.
- In Anycast mode, BUM is replicated to each border leaf. DF election between the border leafs for a particular site determines which border leaf forwards the inter-site traffic (fabric to DCI and conversely) for that site.
- In Anycast mode, all Layer 3 services are advertised in BGP via EVPN Type-5 routes with their physical IP as the next hop.

- vPC mode can support only two BGWs.
- vPC mode can support both Layer 2 hosts and Layer 3 services on local interfaces.
- In vPC mode, BUM is replicated to either of the BGWs for traffic coming from the external site. Hence, both BGWs are forwarders for site external to site internal (DCI to fabric) direction.
- In vPC mode, BUM is replicated to either of the BGWs for traffic coming from the local site leaf for a VLAN using Ingress Replication (IR) underlay. Both BGWs are forwarders for site internal to site external (fabric to DCI) direction for VLANs using the IR underlay.
- In vPC mode, BUM is replicated to both BGWs for traffic coming from the local site leaf for a VLAN using the multicast underlay. Therefore, a decapper/forwarder election happens, and the decapsulation winner/forwarder only forwards the site-local traffic to external site BGWs for VLANs using the multicast underlay.
- Prior to NX-OS 10.2(2)F only ingress replication was supported between DCI peers across the core. Beginning with Cisco NX-OS Release 10.2(2)F both ingress replication and multicast are supported between DCI peers across the core.
- In vPC mode, all Layer 3 services/attachments are advertised in BGP via EVPN Type-5 routes with their virtual IP as next hop. If the VIP/PIP feature is configured, they are advertised with PIP as the next hop.
- If different Anycast Gateway MAC addresses are configured across sites, enable ARP suppression for all VLANs that have been extended.
- Bind NVE to a loopback address that is separate from loopback addresses that are required by Layer 3 protocols. A best practice is to use a dedicated loopback address for the NVE source interface (PIP VTEP) and multi-site source interface (anycast and virtual IP VTEP).
- PIM BiDir is not supported for fabric underlay multicast replication with VXLAN Multi-Site.
- PIM is not supported on Multi-Site VXLAN DCI links.
- FEX is not supported on a vPC BGW and Anycast BGW.
- Beginning with Cisco NX-OS Release 9.3(5), VTEPs support VXLAN-encapsulated traffic over parent interfaces if subinterfaces are configured. This feature is supported for VXLAN EVPN Multi-Site and DCI. DCI tracking can be enabled only on the parent interface.
- Beginning with Cisco NX-OS Release 9.3(5), VXLAN EVPN Multi-Site supports asymmetric VNIs. For more information, see Multi-Site with Asymmetric VNIs and [Configuration Example for Multi-Site with Asymmetric VNIs, on page 23](#).
- The following guidelines and limitations apply to dual RD support for Multi-Site:
 - Dual RD are supported beginning with Cisco NX-OS Release 9.3(5).
 - Dual RD is enabled automatically for Cisco Nexus 9332C, 9364C, 9300-EX, and 9300-FX/FX2 platform switches and Cisco Nexus 9500 platform switches with -EX/FX line cards that have VXLAN EVPN Multi-Site enabled.
 - To use CloudSec or other features that require PIP advertisement for multi-site reoriginated routes, configure BGP additional paths on the route server if dual RD are enabled on the BGW, or disable dual RD.
 - Sending secondary RD additional paths at the BGW node isn't supported.

- During an ISSU, the number of paths for the leaf nodes might double temporarily while all BGWs are being upgraded.
- Beginning with Cisco NX-OS Release 9.3(5), if you disable the **host-reachability protocol bgp** command under the NVE interface in a VXLAN EVPN Multi-Site topology, the NVE interface stays operationally down.
- Beginning with Cisco NX-OS Release 9.3(5), Multi-Site Border Gateways re-originate incoming remote routes when advertising to the site's local spine/leaf switches. These re-originated routes modify the following fields:
 - RD value changes to [Multisite Site ID:L3 VNID].
 - It is mandatory that Route-Targets are defined on all VTEP that are participating in a given VRF, this includes and is explicitly required for the BGW to extend the given VRF. Prior to Cisco NX-OS Release 9.3(5), Route-Targets from intra-site VTEPs were inadvertently kept across the site boundary, even if not defined on the BGW. Starting from Cisco NX-OS Release 9.3(5) the mandatory behavior is enforced. By adding the necessary Route-Targets to the BGW, the change from inadvertent Route-Target advertisement to explicit Route-Target advertisement can be performed.
 - Path type changes from external to local.
- Beginning with Cisco NX-OS Release 10.2(3)F, the VXLAN EVPN Multi-Site is supported on the Cisco Nexus 9300-GX2 platform switches.
- Beginning with Cisco NX-OS Release 10.4(1)F, the VXLAN EVPN Multi-Site is supported on the Cisco Nexus 9332D-H2R switches.
- Beginning with Cisco NX-OS Release 10.4(2)F, the VXLAN EVPN Multi-Site is supported on the Cisco Nexus 93400LD-H1 switches.
- Beginning with Cisco NX-OS Release 10.4(3)F, the VXLAN EVPN Multi-Site is supported on the Cisco Nexus 9364C-H1 switches.
- Beginning with Cisco NX-OS Release 10.2(3)F, the dual RD support for Multi-Site is supported on the Cisco Nexus 9300-FX3 platform switches.
- Beginning with Cisco NX-OS Release 10.4(3)F, the VXLAN Multi-Site Anycast BGW is also supported on the Cisco Nexus 9808/9804 switches with X9836DM-A and X98900CD-A line cards.
 - VXLAN Multi-Site Anycast BGW supports the following features:
 - VXLAN BGP EVPN fabric and multi-site interconnect
 - VXLAN Layer-2 VNI and new Layer-3 VNI which is not VLAN based
 - IPv4 underlay
 - Ingress Replication on fabric and DCI side
 - Multicast underlay in Fabric
 - Bud node
 - TRMv4
 - NGOAM
 - VXLAN Counters

- Per VXLAN peer based total packet/byte counters are supported.
- Per VNI based total packet/byte counters are supported
- VXLAN Multi-Site Anycast BGW does not support the following features:
 - IPv6 underlay
 - vPC BGW
 - Downstream VNI and route leak
 - L3 Port channel as a fabric or DCI link
 - Multicast underlay on DCI side
 - VXLAN access features
 - IGMP snooping
 - Separate VXLAN counters for broadcast, multicast, and unicast traffic
 - Data MDT
 - TRMv6
 - EVPN storm control
- To improve the convergence in case of fabric link failure and avoid issues in case of fabric link flapping, ensure to configure multi-hop BFD between loopbacks of spines and BGWs.

In the specific scenario where a BGW node becomes completely isolated from the fabric due to all its fabric links failing, the use of multi-hop BFD ensures that the BGP sessions between the spines and the isolated BGW can be immediately brought down, without relying on the configured BGP hold-time value.
- In a VXLAN Multi-Site environment, a border gateway device that uses ECMP for routing through both a VXLAN overlay and an L3 prefix to access remote site subnets might encounter adjacency resolution failure for one of these routes. If the switch attempts to use this unresolved prefix, it will result in traffic being dropped.

Guidelines and Limitations for VXLAN EVPN Multi-Site with IPv6 Underlay

VXLAN EVPN Multi-Site with IPv6 Underlay has the following configuration guidelines and limitations:

- Cisco Nexus 9300-FX, FX2, FX3, GX, GX2, H2R and H1 ToR switches are supported as the leaf VTEP or BGW.
- Cisco Nexus X9716D-GX and X9736C-FX line cards are supported only on the spine (EoR).
- When an EoR is deployed as a spine node with Multicast Underlay (PIMv6) Any-Source Multicast (ASM), it is mandatory to configure non-default template using one of the following commands in global configuration mode:

- **system routing template-multicast-heavy**
- **system routing template-multicast-ext-heavy**
- vPC BGWs are not supported with IPv6 multicast underlay.
- Dual stack configuration is not supported for NVE source interface loopback and multi-site interface loopback.

Enabling VXLAN EVPN Multi-Site

This procedure enables the VXLAN EVPN Multi-Site feature. Multi-Site is enabled on the BGWs only. The site-id must be the same on all BGWs in the fabric/site.

Procedure

	Command or Action	Purpose
Step 1	configure terminal Example: switch# configure terminal	Enters global configuration mode.
Step 2	evpn multisite border-gateway <i>ms-id</i> Example: switch(config)# evpn multisite border-gateway 100	Configures the site ID for a site/fabric. The range of values for <i>ms-id</i> is 1 to 2,814,749,767,110,655. The <i>ms-id</i> must be the same in all BGWs within the same fabric/site.
Step 3	split-horizon per-site Example: switch(config-evpn-msite-bgw)# split-horizon per-site	Enables to receive packets encapsulated with DCI group from another border gateway on the same site and avoids duplication of packets. Note Use this command when DCI multicast underlay is configured on a site with anycast border gateway.
Step 4	interface nve 1 Example: switch(config-evpn-msite-bgw)# interface nve 1	Creates a VXLAN overlay interface that terminates VXLAN tunnels. Note Only one NVE interface is allowed on the switch.
Step 5	source-interface loopback <i>src-if</i> Example: switch(config-if-nve)# source-interface loopback 0	The source interface must be a loopback interface that is configured on the switch with a valid /32 IP address. This /32 IP address must be known by the transient devices in the transport network and the remote VTEPs. This requirement is accomplished by advertising it through a dynamic routing protocol in the transport network.
Step 6	host-reachability protocol bgp Example:	Defines BGP as the mechanism for host reachability advertisement.

	Command or Action	Purpose
	<code>switch(config-if-nve)# host-reachability protocol bgp</code>	
Step 7	multisite border-gateway interface loopback <i>vi-num</i> Example: <code>switch(config-if-nve)# multisite border-gateway interface loopback 100</code>	Defines the loopback interface used for the BGW virtual IP address (VIP). The border-gateway interface must be a loopback interface that is configured on the switch with a valid /32 IP address. This /32 IP address must be known by the transient devices in the transport network and the remote VTEPs. This requirement is accomplished by advertising it through a dynamic routing protocol in the transport network. This loopback must be different than the source interface loopback. The range of <i>vi-num</i> is from 0 to 1023.
Step 8	no shutdown Example: <code>switch(config-if-nve)# no shutdown</code>	Negates the shutdown command.
Step 9	exit Example: <code>switch(config-if-nve)# exit</code>	Exits the NVE configuration mode.
Step 10	interface loopback <i>loopback-number</i> Example: <code>switch(config)# interface loopback 0</code>	Configures the loopback interface.
Step 11	ip address <i>ip-address</i> Example: <code>switch(config-if)# ip address 198.0.2.0/32</code>	Configures the IP address for the loopback interface.

Enabling VXLAN EVPN Multi-Site with IPv6 Multicast Underlay

This procedure enables the VXLAN EVPN Multi-Site feature with IPv6 multicast underlay. Multi-Site is enabled on the BGWs only. The site-id must be the same on all BGWs in the fabric/site.

SUMMARY STEPS

1. **configure terminal**
2. **evpn multisite border-gateway** *ms-id*
3. **interface nve 1**
4. **source-interface loopback** *src-if*
5. **host-reachability protocol bgp**
6. **multisite border-gateway interface loopback** *vi-num*
7. (Optional) **multisite virtual-rmac** *mac-address*
8. **member vni** *vni-range*

9. **multisite ingress-replication**
10. **mcast-group** *ipv6-address*
11. **no shutdown**
12. **exit**
13. **interface loopback** *loopback-number*
14. **ipv6 address** *ipv6-address*

DETAILED STEPS

	Command or Action	Purpose
Step 1	configure terminal Example: <pre>switch# configure terminal</pre>	Enters global configuration mode.
Step 2	evpn multisite border-gateway <i>ms-id</i> Example: <pre>switch(config)# evpn multisite border-gateway 100</pre>	Configures the site ID for a site/fabric. The range of values for <i>ms-id</i> is 1 to 2,814,749,767,110,655. The <i>ms-id</i> must be the same in all BGWs within the same fabric/site. Note The mvpn vri id <i>id</i> command is required on BGWs if site-id value is greater than 2 bytes, and this value has to be same across all same site BGWs and unique in TRM domain. Also this value must not collide with any site-id value.
Step 3	interface nve 1 Example: <pre>switch(config-evpn-msite-bgw)# interface nve 1</pre>	Creates a VXLAN overlay interface that terminates VXLAN tunnels. Note Only one NVE interface is allowed on the switch.
Step 4	source-interface loopback <i>src-if</i> Example: <pre>switch(config-if-nve)# source-interface loopback 0</pre>	The source interface must be a loopback interface that is configured on the switch with a valid /128 IPv6 address. This /128 IPv6 address must be known by the transient devices in the transport network and the remote VTEPs. This requirement is accomplished by advertising it through a dynamic routing protocol in the transport network.
Step 5	host-reachability protocol bgp Example: <pre>switch(config-if-nve)# host-reachability protocol bgp</pre>	Defines BGP as the mechanism for host reachability advertisement.
Step 6	multisite border-gateway interface loopback <i>vi-num</i> Example: <pre>switch(config-if-nve)# multisite border-gateway interface loopback 100</pre>	Defines the loopback interface used for the BGW virtual IPv6 address (VIP). The border-gateway interface must be a loopback interface that is configured on the switch with a valid /128 IPv6 address. This /128 IPv6 address must be known by the transient devices in the transport network and the remote VTEPs. This requirement is accomplished by advertising it through a dynamic routing

	Command or Action	Purpose
		protocol in the transport network. This loopback must be different than the source interface loopback. The range of <i>vi-num</i> is from 0 to 1023.
Step 7	(Optional) multisite virtual-rmac <i>mac-address</i> Example: <code>switch(config-if-nve)# multisite virtual-rmac 0600.0000.abcd</code>	For interoperability with other switches, user have to manually configure VMAC on Nexus 9000 switches to override the auto generated VMAC. The default behavior is to auto generate. If manual VMAC is configured, manual VMAC will take precedence.
Step 8	member vni <i>vni-range</i> Example: <code>switch(config-if-nve)# member vni 50101</code>	Configures the virtual network identifier (VNI). The range for <i>vni-range</i> is from 1 to 16,777,214. The value of <i>vni-range</i> can be a single value like 5000 or a range like 5001-5008.
Step 9	multisite ingress-replication Example: <code>switch(config-if-nve-vni)# multisite ingress-replication</code>	Defines the Multi-Site replication method for extending TRM functionality across sites.
Step 10	mcast-group <i>ipv6-address</i> Example: <code>switch(config-if-nve-vni)# mcast-group ff03::101</code>	Configures the IPv6 Multicast group within the fabric
Step 11	no shutdown Example: <code>switch(config-if-nve)# no shutdown</code>	Negates the shutdown command.
Step 12	exit Example: <code>switch(config-if-nve)# exit</code>	Exits the NVE configuration mode.
Step 13	interface loopback <i>loopback-number</i> Example: <code>switch(config)# interface loopback 0</code>	Configures the loopback interface.
Step 14	ipv6 address <i>ipv6-address</i> Example: <code>switch(config-if)# ipv6 address 2001:DB8::11:11:11:11/128</code>	Configures the IPv6 address for the loopback interface.

Configuring Dual RD Support for Multi-Site

Follow these steps if you need to manually configure the secondary RD value or disable dual RDs.

Before you begin

Enable VXLAN EVPN Multi-Site.

Procedure

	Command or Action	Purpose
Step 1	configure terminal Example: <pre>switch# configure terminal switch(config)#</pre>	Enters global configuration mode.
Step 2	router bgp as-num Example: <pre>switch(config)# router bgp 100 switch(config-router)#</pre>	Configures the autonomous system number. The range for <i>as-num</i> is from 1 to 4,294,967,295.
Step 3	[no] rd dual id [2-bytes] Example: <pre>switch(config-router)# rd dual id 1</pre>	Defines the first 2 bytes of the secondary RD. The ID must be the same across the Multi-Site BGWs. The range is from 1 to 65535. Note If necessary, you can use the no rd dual command to disable dual RDs and fall back to a single RD.
Step 4	(Optional) show bgp evi evi-id Example: <pre>switch(config-router)# show bgp evi 100</pre>	Displays the secondary RD configured as part of the rd dual id [2-bytes] command for the specified EVI.

Example

The following example shows sample output for the **show bgp evi evi-id** command:

```
switch# show bgp evi 100
-----
L2VNI ID           : 100 (L2-100)
RD                 : 3.3.3.3:32867
Secondary RD       : 1:100
Prefixes (local/total) : 1/6
Created            : Jun 23 22:35:13.368170
Last Oper Up/Down  : Jun 23 22:35:13.369005 / never
Enabled            : Yes

Active Export RT list :
    100:100
Active Import RT list :
    100:100
```

Configuring VNI Dual Mode

This procedure describes the configuration of the BUM traffic domain for a given VLAN. Support exists for using multicast or ingress replication inside the fabric/site and ingress replication across different fabrics/sites.



Note If you have multiple VRFs and only one is extended to ALL leaf switches, you can add a dummy loopback to that one extended VRF and advertise through BGP. Otherwise, you'll need to check how many VRFs are extended and to which switches, and then add a dummy loopback to the respective VRFs and advertise them as well. Therefore, use the **advertise-pip** command to prevent potential user errors in the future.

For more information about configuring multicast or ingress replication for a large number of VNIs, see [Example of VXLAN BGP EVPN \(EBGP\)](#).

Procedure

	Command or Action	Purpose
Step 1	configure terminal Example: switch# <code>configure terminal</code>	Enters global configuration mode.
Step 2	interface nve 1 Example: switch(config)# <code>interface nve 1</code>	Creates a VXLAN overlay interface that terminates VXLAN tunnels. Note Only one NVE interface is allowed on the switch.
Step 3	member vni vni-range Example: switch(config-if-nve)# <code>member vni 200</code>	Configures the virtual network identifier (VNI). The range for <i>vni-range</i> is from 1 to 16,777,214. The value of <i>vni-range</i> can be a single value like 5000 or a range like 5001-5008. Note Enter one of the Step 4 or Step 5 commands.
Step 4	mcast-group ip-addr Example: switch(config-if-nve-vni)# <code>mcast-group 255.0.4.1</code>	Configures the NVE Multicast group IP prefix within the fabric.
Step 5	ingress-replication protocol bgp Example: switch(config-if-nve-vni)# <code>ingress-replication protocol bgp</code>	Enables BGP EVPN with ingress replication for the VNI within the fabric.
Step 6	multisite ingress-replication Example: switch(config-if-nve-vni)# <code>multisite ingress-replication</code>	Defines the Multi-Site BUM replication method for extending the Layer 2 VNI.

Configuring Fabric/DCI Link Tracking

This procedure describes the configuration to track all DCI-facing interfaces and site internal/fabric facing interfaces. Tracking is mandatory and is used to disable reorigination of EVPN routes either from or to a site if all the DCI/fabric links go down.

Procedure

	Command or Action	Purpose
Step 1	configure terminal Example: switch# configure terminal	Enters global configuration mode.
Step 2	interface ethernet port Example: switch(config)# interface ethernet1/1	Enters interface configuration mode for the DCI or fabric interface. Note Enter one of the following commands in Step 3 or Step 4.
Step 3	evpn multisite dci-tracking Example: switch(config-if)# evpn multisite dci-tracking	Configures DCI interface tracking.
Step 4	(Optional) evpn multisite fabric-tracking Example: switch(config-if)# evpn multisite fabric-tracking	Configures EVPN Multi-Site fabric tracking. The evpn multisite fabric-tracking is mandatory for anycast BGWs and vPC BGW fabric links.
Step 5	ip address ip-addr ipv6 address ipv6-addr Example: For IPv4 switch(config-if)# ip address 192.1.1.1 Example: For IPv6 switch(config-if)# ipv6 address 2001:DB8::192:1:1:1	Configures the IP or IPv6 address.
Step 6	no shutdown Example: switch(config-if)# no shutdown	Negates the shutdown command.

Configuring Fabric External Neighbors

This procedure describes the configuration of fabric external/DCI neighbors for communication to other site/fabric BGWs.

Procedure

	Command or Action	Purpose
Step 1	configure terminal Example: switch# configure terminal	Enters global configuration mode.
Step 2	router bgp as-num Example: switch(config)# router bgp 100	Configures the autonomous system number. The range for <i>as-num</i> is from 1 to 4,294,967,295.
Step 3	neighbor [ip-addr ipv6-addr] Example: For IPv4 switch(config-router)# neighbor 100.0.0.1 Example: For IPv6 switch(config-router)# neighbor 2001:DB8::100:0:0:1	Configures a BGP neighbor.
Step 4	remote-as value Example: switch(config-router-neighbor)# remote-as 69000	Configures remote peer's autonomous system number.
Step 5	peer-type fabric-external Example: switch(config-router-neighbor)# peer-type fabric-external	Enables the next hop rewrite for Multi-Site. Defines site external BGP neighbors for EVPN exchange. The default for peer-type is fabric-internal . Note The peer-type fabric-external command is required only for VXLAN Multi-Site BGWs. It is not required for pseudo BGWs.
Step 6	address-family l2vpn evpn Example: switch(config-router-neighbor)# address-family l2vpn evpn	Configures the address family Layer 2 VPN EVPN under the BGP neighbor.
Step 7	rewrite-evpn-rt-asn Example: switch(config-router-neighbor)# rewrite-evpn-rt-asn	Rewrites the route target (RT) information to simplify the MAC-VRF and IP-VRF configuration. BGP receives a route, and as it processes the RT attributes, it checks if the AS value matches the peer AS that is sending that route and replaces it. Specifically, this command changes the incoming route target's AS number to match the BGP-configured neighbor's remote AS number. You can see the modified RT value in the receiver router.

Configuring VXLAN EVPN Multi-Site Storm Control

VXLAN EVPN Multi-Site Storm Control allows rate limiting of multidestination (BUM) traffic on Multi-Site BGWs. You can control BUM traffic sent over the DCI link using a policer on fabric links in the ingress direction.

Remote peer reachability must be only through DCI links. Appropriate routing configuration must ensure that remote site routes are not advertised over Fabric links.

Multicast traffic is policed only on DCI interfaces, while unknown unicast and broadcast traffic is policed on both DCI and fabric interfaces.

Cisco NX-OS Release 9.3(6) and later releases optimize rate granularity and accuracy. Bandwidth is calculated based on the accumulated DCI uplink bandwidth, and only interfaces tagged with DCI tracking are considered. (Prior releases also include fabric-tagged interfaces.) In addition, granularity is enhanced by supporting two digits after the decimal point. These enhancements apply to the Cisco Nexus 9300-EX, 9300-FX/FX2/FX3, and 9300-GX platform switches.



Note For information on access port storm control, see the [Cisco Nexus 9000 Series NX-OS Layer 2 Configuration Guide](#).

SUMMARY STEPS

1. **configure terminal**
2. **[no] evpn storm-control {broadcast | multicast | unicast} {level level}**

DETAILED STEPS

	Command or Action	Purpose
Step 1	configure terminal Example: <pre>switch# configure terminal switch(config)#</pre>	Enters global configuration mode.
Step 2	[no] evpn storm-control {broadcast multicast unicast} {level level} Example: <pre>switch(config)# evpn storm-control unicast level 10</pre> Example: <pre>switch(config)# evpn storm-control unicast level 10.20</pre>	Configures the storm suppression level as a number from 0–100. 0 means that all traffic is dropped, and 100 means that all traffic is allowed. For any value in between, the unknown unicast traffic rate is restricted to a percentage of available bandwidth. For example, a value of 10 means that the traffic rate is restricted to 10% of the available bandwidth, and anything above that rate is dropped. Beginning with Cisco NX-OS Release 9.3(6), you can configure the level as a fractional value by adding two digits after the decimal point. For example, you can enter a value of 10.20.

Verifying VXLAN EVPN Multi-Site Storm Control

To display EVPN storm control setting information, enter the following command:

Command	Purpose
slot 1 show hardware vxlan storm-control	Displays the status of EVPN storm control setting.



Note Once the Storm control hits the threshold, a message is logged as stated below:

```
BGWY-1 %ETHPORT-5-STORM_CONTROL_ABOVE_THRESHOLD: Traffic in port Ethernet1/32 exceeds the
configured threshold , action - Trap (message repeated 38 times)
```

Multi-Site with vPC Support

About Multi-Site with vPC Support

The BGWs can be in a vPC complex. In this case, it is possible to support dually-attached directly-connected hosts that might be bridged or routed as well as dually-attached firewalls or service attachments. The vPC BGWs have vPC-specific multihoming techniques and do not rely on EVPN Type 4 routes for DF election or split horizon.

Guidelines and Limitations for Multi-Site with vPC Support

Multi-Site with vPC support has the following configuration guidelines and limitations:

- 4000 VNIs for vPC are not supported.
- For BUM with continued VIP use, the MCT link is used as transport upon core isolation or fabric isolation, and for unicast traffic in fabric isolation.
- Beginning with Cisco NX-OS Release 10.1(2), TRM Multisite with vPC BGW is supported.
- The routes to remote Multisite BGW loopback addresses must always prioritize the DCI link path over the iBGP protocol between vPC Border Gateway switches configured using the backup SVI. The backup SVI should be used strictly in the event of a DCI link failure.
- vPC BGWs are not supported with IPv6 multicast underlay.

Configuring Multi-Site with vPC Support

This procedure describes the configuration of Multi-Site with vPC support:

- Configure vPC domain.
- Configure port channels.

- Configuring vPC Peer Link.

Procedure

	Command or Action	Purpose
Step 1	configure terminal Example: switch# configure terminal	Enters global configuration mode.
Step 2	feature vpc Example: switch(config)# feature vpc	Enables vPCs on the device.
Step 3	feature interface-vlan Example: switch(config)# feature interface-vlan	Enables the interface VLAN feature on the device.
Step 4	feature lacp Example: switch(config)# feature lacp	Enables the LACP feature on the device.
Step 5	feature pim Example: switch(config)# feature pim	Enables the PIM feature on the device.
Step 6	feature ospf Example: switch(config)# feature ospf	Enables the OSPF feature on the device.
Step 7	ip pim rp-address <i>address group-list range</i> Example: switch(config)# ip pim rp-address 100.100.100.1 group-list 224.0.0/4	Defines a PIM RP address for the underlay multicast group range.
Step 8	vpc domain <i>domain-id</i> Example: switch(config)# vpc domain 1	Creates a vPC domain on the device and enters vpc-domain configuration mode for configuration purposes. There is no default. The range is from 1 to 1000.
Step 9	peer switch Example: switch(config-vpc-domain)# peer switch	Defines the peer switch.
Step 10	peer gateway Example: switch(config-vpc-domain)# peer gateway	Enables Layer 3 forwarding for packets destined to the gateway MAC address of the vPC.

	Command or Action	Purpose
Step 11	<p>peer-keepalive destination <i>ip-address</i></p> <p>Example:</p> <pre>switch(config-vpc-domain) # peer-keepalive destination 172.28.230.85</pre>	<p>Configures the IPv4 address for the remote end of the vPC peer-keepalive link.</p> <p>Note The system does not form the vPC peer link until you configure a vPC peer-keepalive link.</p> <p>The management ports and VRF are the defaults.</p>
Step 12	<p>ip arp synchronize</p> <p>Example:</p> <pre>switch(config-vpc-domain) # ip arp synchronize</pre>	<p>Enables IP ARP synchronize under the vPC domain to facilitate faster ARP table population following device reload.</p>
Step 13	<p>ipv6 nd synchronize</p> <p>Example:</p> <pre>switch(config-vpc-domain) # ipv6 nd synchronize</pre>	<p>Enables IPv6 ND synchronization under the vPC domain to facilitate faster ND table population following device reload.</p>
Step 14	<p>Create the vPC peer-link.</p> <p>Example:</p> <pre>switch(config) # interface port-channel 1 switch(config) # switchport switch(config) # switchport mode trunk switch(config) # switchport trunk allowed vlan 1,10,100-200 switch(config) # mtu 9216 switch(config) # vpc peer-link switch(config) # no shut switch(config) # interface Ethernet 1/1, 1/21 switch(config) # switchport switch(config) # mtu 9216 switch(config) # channel-group 1 mode active switch(config) # no shutdown</pre>	<p>Creates the vPC peer-link port-channel interface and adds two member interfaces to it.</p>
Step 15	<p>system nve infra-vlans <i>range</i></p> <p>Example:</p> <pre>switch(config) # system nve infra-vlans 10</pre>	<p>Defines a non-VXLAN-enabled VLAN as a backup routed path.</p>
Step 16	<p>vlan <i>number</i></p> <p>Example:</p> <pre>switch(config) # vlan 10</pre>	<p>Creates the VLAN to be used as an infra-VLAN.</p>
Step 17	<p>Create the SVI.</p> <p>Example:</p> <pre>switch(config) # interface vlan 10 switch(config) # ip address 10.10.10.1/30 switch(config) # ip router ospf process UNDERLAY area 0 switch(config) # ip pim sparse-mode switch(config) # no ip redirects</pre>	<p>Creates the SVI used for the backup routed path over the vPC peer-link.</p>

	Command or Action	Purpose
	<pre>switch(config)# mtu 9216 switch(config)# no shutdown</pre>	
Step 18	<p>(Optional) delay restore interface-vlan <i>seconds</i></p> <p>Example:</p> <pre>switch(config-vpc-domain)# delay restore interface-vlan 45</pre>	Enables the delay restore timer for SVIs. We recommend tuning this value when the SVI/VNI scale is high. For example, when the SCI count is 1000, we recommend that you set the delay restore to 45 seconds.
Step 19	<p>evpn multisite border-gateway <i>ms-id</i></p> <p>Example:</p> <pre>switch(config)# evpn multisite border-gateway 100</pre>	Configures the site ID for a site/fabric. The range of values for <i>ms-id</i> is 1 to 281474976710655. The <i>ms-id</i> must be the same in all BGWs within the same fabric/site.
Step 20	<p>interface nve 1</p> <p>Example:</p> <pre>switch(config-evpn-msite-bgw)# interface nve 1</pre>	<p>Creates a VXLAN overlay interface that terminates VXLAN tunnels.</p> <p>Note Only one NVE interface is allowed on the switch.</p>
Step 21	<p>source-interface loopback <i>src-if</i></p> <p>Example:</p> <pre>switch(config-if-nve)# source-interface loopback 0</pre>	Defines the source interface, which must be a loopback interface with a valid /32 IP address. This /32 IP address must be known by the transient devices in the transport network and the remote VTEPs. This requirement is accomplished by advertising the address through a dynamic routing protocol in the transport network.
Step 22	<p>host-reachability protocol bgp</p> <p>Example:</p> <pre>switch(config-if-nve)# host-reachability protocol bgp</pre>	Defines BGP as the mechanism for host reachability advertisement.
Step 23	<p>multisite border-gateway interface loopback <i>vi-num</i></p> <p>Example:</p> <pre>switch(config-if-nve)# multisite border-gateway interface loopback 100</pre>	Defines the loopback interface used for the BGW virtual IP address (VIP). The BGW interface must be a loopback interface that is configured on the switch with a valid /32 IP address. This /32 IP address must be known by the transient devices in the transport network and the remote VTEPs. This requirement is accomplished by advertising the address through a dynamic routing protocol in the transport network. This loopback must be different than the source interface loopback. The range of <i>vi-num</i> is from 0 to 1023.
Step 24	<p>no shutdown</p> <p>Example:</p> <pre>switch(config-if-nve)# no shutdown</pre>	Negates the shutdown command.
Step 25	<p>exit</p> <p>Example:</p> <pre>switch(config-if-nve)# exit</pre>	Exits the NVE configuration mode.

	Command or Action	Purpose
Step 26	interface loopback <i>loopback-number</i> Example: switch(config)# interface loopback 0	Configures the loopback interface.
Step 27	ip address <i>ip-address</i> Example: switch(config-if)# ip address 198.0.2.0/32	Configures the primary IP address for the loopback interface.
Step 28	ip address <i>ip-address secondary</i> Example: switch(config-if)# ip address 198.0.2.1/32 secondary	Configures the secondary IP address for the loopback interface.
Step 29	ip pim sparse-mode Example: switch(config-if)# ip pim sparse-mode	Configures PIM sparse mode on the loopback interface.

Verifying the Multi-Site with vPC Support Configuration

To display Multi-Site with vPC support information, enter one of the following commands:

show vpc brief	Displays general vPC and CC status.
show vpc consistency-parameters global	Displays the status of those parameters that must be consistent across all vPC interfaces.
show vpc consistency-parameters vni	Displays configuration information for VNIs under the NVE interface that must be consistent across both vPC peers.

Output example for the **show vpc brief** command:

```
switch# show vpc brief
Legend:
          (*) - local vPC is down, forwarding via vPC peer-link

vPC domain id           : 1
Peer status              : peer adjacency formed ok      (<--- peer up)
vPC keep-alive status   : peer is alive
Configuration consistency status : success (<----- CC passed)
Per-vlan consistency status : success              (<----- per-VNI CCpassed)
Type-2 consistency status : success
vPC role                 : secondary
Number of vPCs configured : 1
Peer Gateway             : Enabled
Dual-active excluded VLANs : -
Graceful Consistency Check : Enabled
Auto-recovery status     : Enabled, timer is off.(timeout = 240s)
Delay-restore status     : Timer is off.(timeout = 30s)
Delay-restore SVI status : Timer is off.(timeout = 10s)
Operational Layer3 Peer-router : Disabled
```

[...]

Output example for the **show vpc consistency-parameters global** command:

```
switch# show vpc consistency-parameters global
```

Legend:

Type 1 : vPC will be suspended in case of mismatch

Name	Type	Local Value	Peer Value
[...]			
Nve1 Adm St, Src Adm St, Sec IP, Host Reach, VMAC Adv, SA,mcast l2, mcast l3, IR BGP,MS Adm St, Reo	1	Up, Up, 2.1.44.5, CP, TRUE, Disabled, 0.0.0.0, 0.0.0.0, Disabled, Up, 200.200.200.200	Up, Up, 2.1.44.5, CP, TRUE, Disabled, 0.0.0.0, 0.0.0.0, Disabled, Up, 200.200.200.200
[...]			

Output example for the **show vpc consistency-parameters vni** command:

```
switch(config-if-nve-vni)# show vpc consistency-parameters vni
```

Legend:

Type 1 : vPC will be suspended in case of mismatch

Name	Type	Local Value	Peer Value
[...]			
Nve1 Vni, Mcast, Mode, Type, Flags	1	11577, 234.1.1.1, Mcast, L2, MS IR	11577, 234.1.1.1, Mcast, L2, MS IR
Nve1 Vni, Mcast, Mode, Type, Flags	1	11576, 234.1.1.1, Mcast, L2, MS IR	11576, 234.1.1.1, Mcast, L2, MS IR
[...]			

Configuration Example for Multi-Site with Asymmetric VNIs

The following example shows how two sites with different sets of VNIs can connect to the same MAC VRF or IP VRF. One site uses VNI 200 internally, and the other site uses VNI 300 internally. Route-target auto no longer matches because the VNI values are different. Therefore, the route-target values must be manually configured. In this example, the value 222:333 stitches together the two VNIs from different sites.

The BGW of site 1 has L2VNI 200 and L3VNI 201.

The BGW of site 2 has L2VNI 300 and L3VNI 301.



Note This configuration example assumes that basic Multi-Site configurations are already in place.



Note You must have VLAN-to-VRF mapping on the BGW. This requirement is necessary to maintain L2VNI-to-L3VNI mapping, which is needed for reorigination of MAC-IP routes at BGWs.

Layer 3 Configuration

In the BGW node of site 1, configure the common RT 201:301 for stitching the two sites using L3VNI 201 and L3VNI 301:

```
vrf context vni201
vni 201
address-family ipv4 unicast
route-target both auto evpn
route-target import 201:301 evpn
route-target export 201:301 evpn
```

In the BGW node of site 2, configure the common RT 201:301 for stitching the two sites using L3VNI 201 and L3VNI 301:

```
vrf context vni301
vni 301
address-family ipv4 unicast
route-target both auto evpn
route-target import 201:301 evpn
route-target export 201:301 evpn
```

Layer 2 Configuration

In the BGW node of site 1, configure the common RT 222:333 for stitching the two sites using L2VNI 200 and L2VNI 300:

```
evpn
vni 200 12
rd auto
route-target import auto
route-target import 222:333
route-target export auto
route-target export 222:333
```

For proper reorigination of L3 labels of MAC-IP routes, associate the VRF (L3VNI) to the L2VNI:

```
interface Vlan 200
vrf member vni201
```

In the BGW node of site 2, configure the common RT 222:333 for stitching the two sites using L2VNI 200 and L2VNI 300:

```
evpn
vni 300 12
rd auto
route-target import auto
route-target import 222:333
route-target export auto
route-target export 222:333
```

For proper reorigination of L3 labels of MAC-IP routes, associate the VRF (L3VNI) to the L2VNI:

```
interface vlan 300
vrf member vni301
```

TRM with Multi-Site

This section contains the following topics:

- [Information About Configuring TRM with Multi-Site, on page 25](#)
- [Guidelines and Limitations for TRM with Multi-Site, on page 29](#)
- [Configuring TRM with Multi-Site, on page 32](#)
- [Verifying TRM with Multi-Site Configuration, on page 35](#)

Information About Configuring TRM with Multi-Site

Tenant Routed Multicast (TRM) with Multi-Site enables multicast forwarding across multiple VXLAN EVPN fabrics that are connected via Multi-Site. This feature provides Layer 3 multicast services across sites for sources and receivers across different sites. It addresses the requirement of East-West multicast traffic between sites.

Each TRM site is operating independently. Border gateways on each site allow stitching across the sites. There can be multiple border gateways for each site. Multicast source and receiver information across sites is propagated by BGP on the border gateways that are configured with TRM. The border gateway on each site receives the multicast packet and re-encapsulates the packet before sending it to the local site. Beginning with Cisco NX-OS Release 10.1(2), TRM with Multi-Site supports both Anycast Border Gateway and vPC Border Gateway.

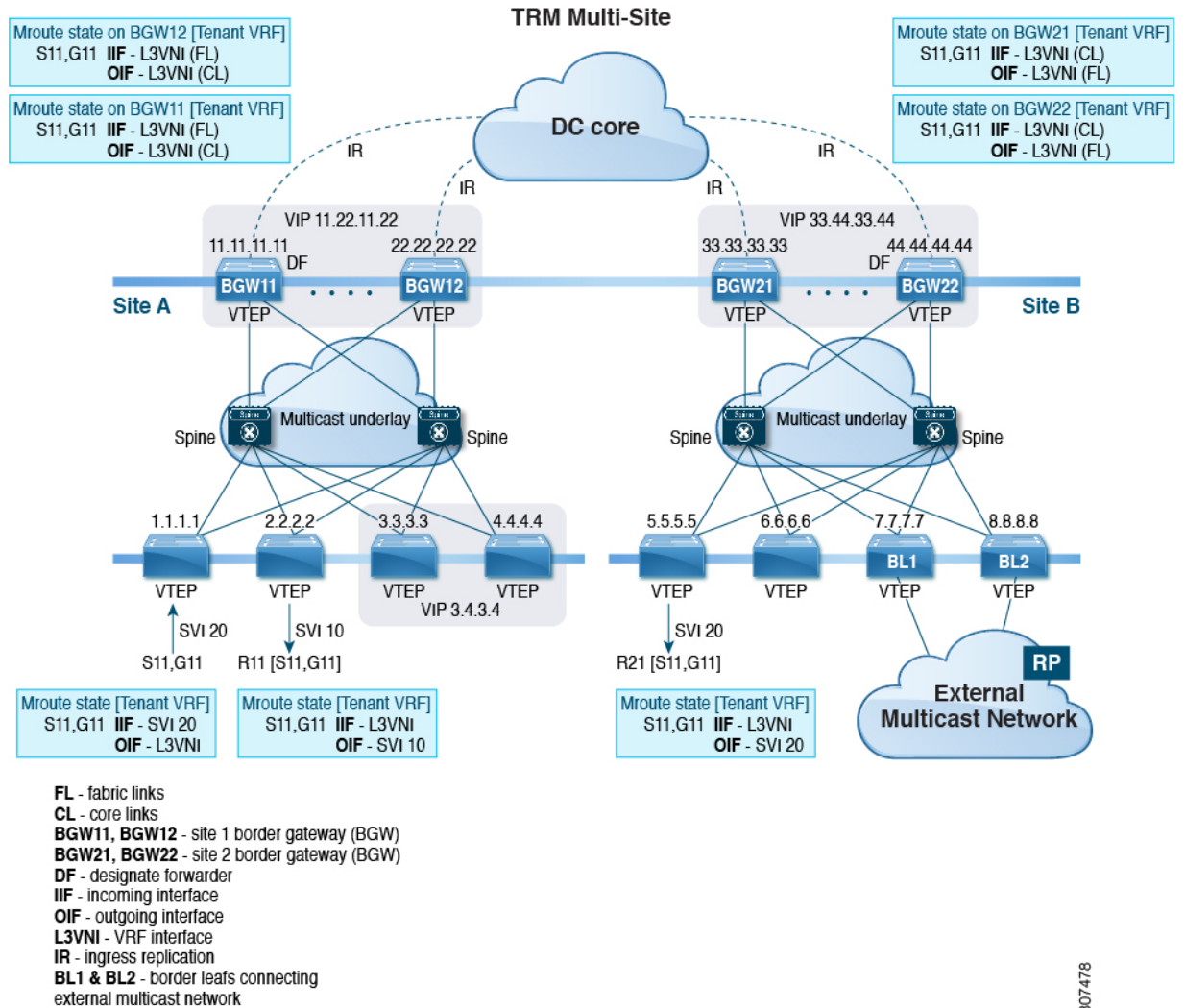
The border gateway that is elected as Designated Forwarder (DF) for the L3VNI forwards the traffic from fabric toward the core side. In the TRM Multicast-Anycast Gateway model, we use the VIP-R based model to send traffic toward remote sites. The IR destination IP is the VIP-R of the remote site. Each site that has the receiver gets only one copy from the source site. DF forwarding is applicable only on Anycast Border Gateways.



Note Only the DF sends the traffic toward remote sites.

On the remote site, the BGW that receives the inter-site multicast traffic from the core forwards the traffic toward the fabric side. The DF check is not done from the core to fabric direction because non-DF can also receive the VIP-R copy from the source site.

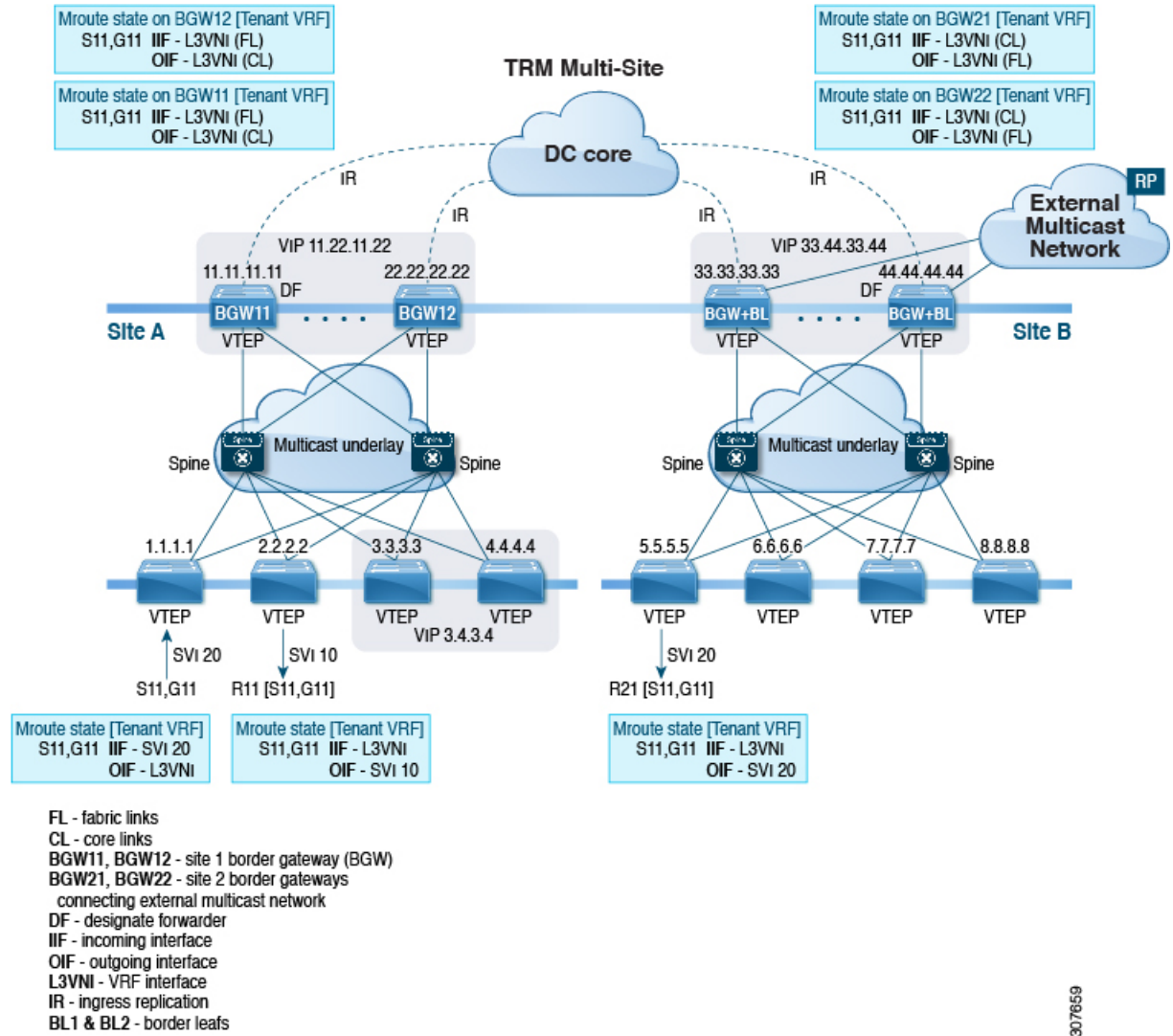
Figure 2: TRM with Multi-Site Topology, BL External Multicast Connectivity



Beginning with Cisco NX-OS Release 9.3(3), TRM with Multi-Site supports BGW connections to the external multicast network in addition to the BL connectivity, which is supported in previous releases. Forwarding occurs as documented in the previous example, except the exit point to the external multicast network can optionally be provided through the BGW.

307478

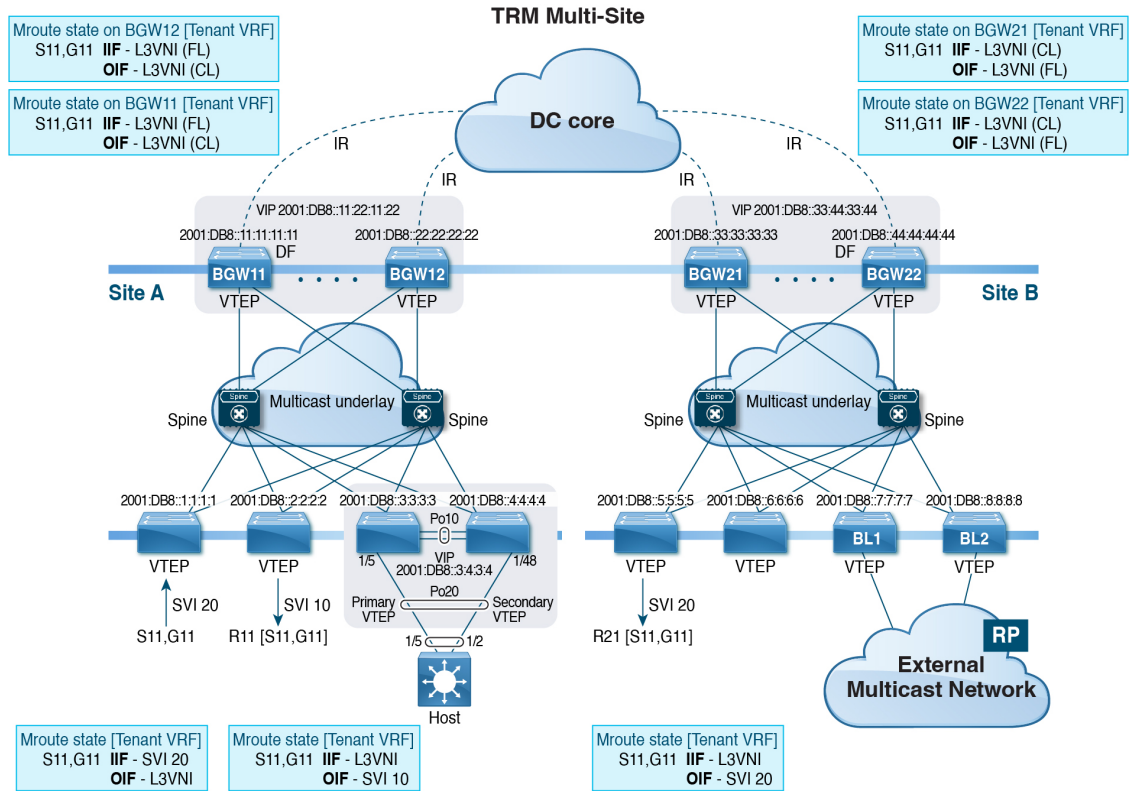
Figure 3: TRM with Multi-Site Topology, BGW External Multicast Connectivity



Information About Configuring TRM Multi-Site with IPv6 Underlay

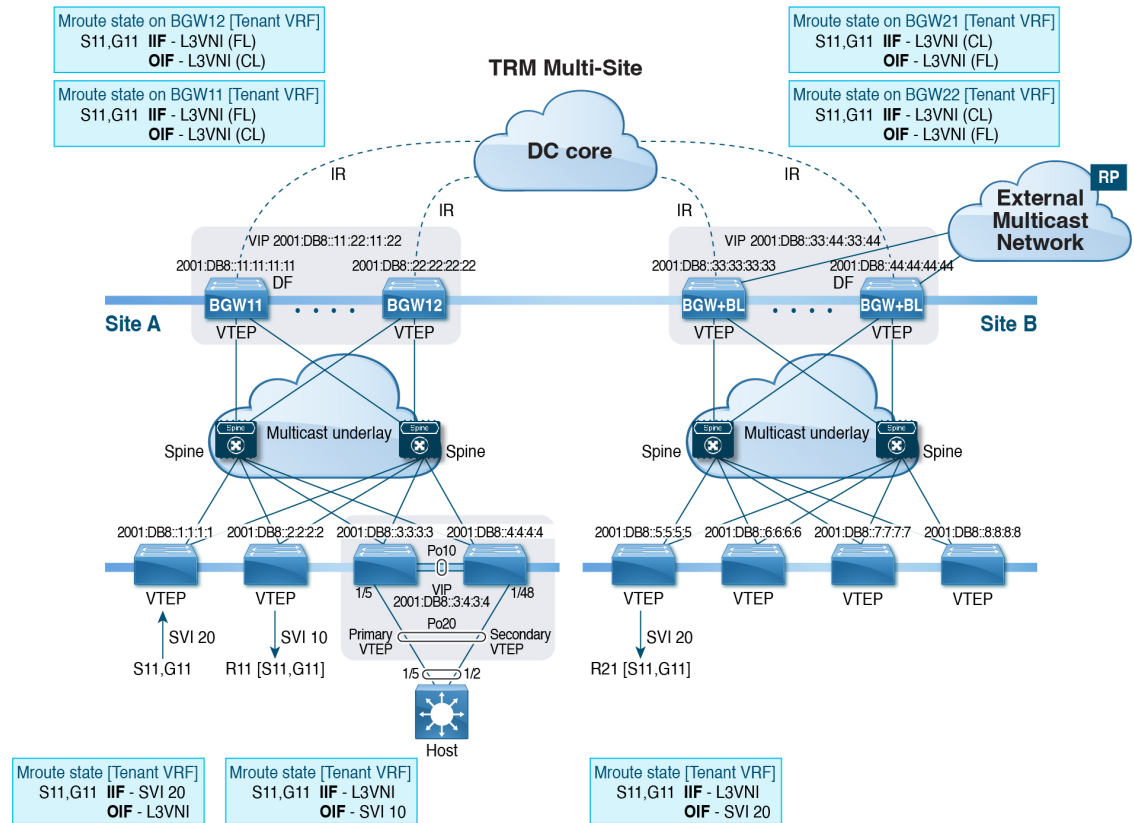
Beginning with Cisco NX-OS Release 10.4(3)F, the support is provided for TRM Multi-Site with IPv6 Underlay.

Figure 4: TRM Multi-Site with IPv6 Underlay Topology, BL External Multicast Connectivity



505494

Figure 5: TRM Multi-Site with IPv6 Underlay Topology, BGW External Multicast Connectivity



FL - fabric links
 CL - core links
 BGW11, BGW12 - site 1 border gateway (BGW)
 BGW21, BGW22 - site 2 border gateways
 connecting external multicast network
 DF - designate forwarder
 IIF - incoming interface
 OIF - outgoing interface
 L3VNI - VRF interface
 IR - ingress replication
 BL1 & BL2 - border leaves

505-496

The above topology shows four leafs and two spines in the VXLAN EVPN fabric and two Anycast BGWs. Inside the fabric, the underlay is an IPv6 Multicast running PIMv6. RP is positioned in the spine with anycast RP. BGWs support VXLAN with IPv6 Protocol-Independent Multicast (PIMv6) Any-Source Multicast (ASM) on the fabric side and Ingress Replication (IPv6) on the DCI side.

Guidelines and Limitations for TRM with Multi-Site

TRM with Multi-Site has the following guidelines and limitations:

- The following platforms support TRM with Multi-Site:
 - Cisco Nexus 9300-EX platform switches
 - Cisco Nexus 9300-FX/FX2/FX3 platform switches
 - Cisco Nexus 9300-GX platform switches

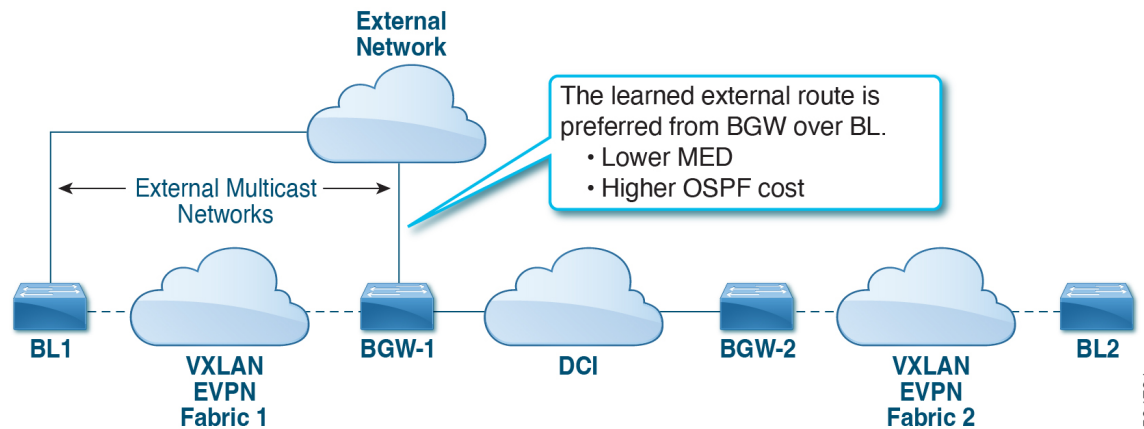
- Cisco Nexus 9500 platform switches with -EX/FX line cards
- Beginning with Cisco NX-OS Release 9.3(3), a border leaf and Multi-Site border gateway can coexist on the same node for multicast traffic.
- Beginning with Cisco NX-OS Release 9.3(3), all border gateways for a given site must run the same Cisco NX-OS 9.3(x) image.
- Cisco NX-OS Release 10.1(2) has the following guidelines and limitations:
 - You need to add a VRF lite link (per Tenant VRF) between the vPC peers in order to support the L3 hosts attached to the vPC primary and secondary peers.
 - Backup SVI is needed between the two vPC peers.
 - Orphan ports attached with L2 and L3 are supported with vPC BGW.
 - TRM multi-site with vPC BGW is not supported with vMCT.

For details on TRM and Configuring TRM with vPC Support, see [Configuring Tenant Routed Multicast](#).

- TRM multi-site with vPC BGW and with Anycast BGW are supported on Cisco Nexus 9300-EX, FX, FX2, and FX3 family switches. Beginning with Cisco NX-OS Release 10.2(1)F, TRM with vPC BGW and with Anycast BGW are supported on Cisco Nexus 9300-GX family switches.
- Beginning with Cisco NX-OS Release 10.2(1q)F, TRM with Multi-Site is supported on the Cisco Nexus N9K-C9332D-GX2B platform switches.
- Beginning with Cisco NX-OS Release 10.2(1q)F, the TRM multi-site with vPC BGW and with Anycast BGW are supported on the Cisco Nexus C9332D-GX2B platform switches.
- Beginning with Cisco NX-OS Release 10.4(1)F, the TRM multi-site with vPC BGW and with Anycast BGW are supported on the Cisco Nexus 9332D-H2R switches.
- Beginning with Cisco NX-OS Release 10.4(2)F, the TRM multi-site with vPC BGW and with Anycast BGW are supported on the Cisco Nexus 93400LD-H1 switches.
- Beginning with Cisco NX-OS Release 10.4(3)F, the TRM multi-site with vPC BGW and with Anycast BGW are supported on the Cisco Nexus 9364C-H1 switches.
- Beginning with Cisco NX-OS Release 10.2(2)F, multicast group configuration is used to encapsulate TRM and L2 BUM packets in the DCI core using the **multisite mcast-group** *dci-core-group* command.
- Beginning with Cisco NX-OS Release 10.2(3)F, the TRM multi-site is supported on the Cisco Nexus 9364D-GX2A and 9348D-GX2A switches.
- Beginning with Cisco NX-OS Release 10.4(1)F, the TRM multi-site is supported on the Cisco Nexus 9332D-H2R switches.
- Beginning with Cisco NX-OS Release 10.4(2)F, the TRM multi-site is supported on the Cisco Nexus 93400LD-H1 switches.
- Beginning with Cisco NX-OS Release 10.4(3)F, the TRM multi-site is supported on the Cisco Nexus 9364C-H1 switches.
- TRM with Multi-Site supports the following features:
 - TRM Multi-Site with vPC Border Gateway.

- PIM ASM multicast underlay in the VXLAN fabric
 - TRM with Multi-Site Layer 3 mode only
 - TRM with Multi-Site with Anycast Gateway
 - Terminating VRF-lite at the border leaf
 - The following RP models with TRM Multi-Site:
 - External RP
 - RP Everywhere
 - Internal RP

 - Only one pair of vPC BGW can be configured on one site.
 - A pair of vPC BGW and Anycast BGW cannot co-exist on the same site.
 - Prior to NX-OS 10.2(2)F only ingress replication was supported between DCI peers across the core. Beginning with Cisco NX-OS Release 10.2(2)F both ingress replication and multicast are supported between DCI peers across the core.
 - Border routers reoriginate MVPN routes from fabric to core and from core to fabric.
 - Only eBGP peering between border gateways of different sites is supported.
 - Each site must have a local RP for the TRM underlay.
 - Keep each site's underlay unicast routing isolated from another site's underlay unicast routing. This requirement also applies to Multi-Site.
 - MVPN address family must be enabled between BGWs.
 - When configuring BGW connections to the external multicast fabric, be aware of the following:
 - The multicast underlay must be configured between all BGWs on the fabric side even if the site doesn't have any leafs in the fabric site.
 - Sources and receivers that are Layer-3 attached through VRF-Lite links to the BGW of a single site acting therefore also as Border Leaf (BL) node need to have reachability through the external Layer-3 network. If there's a Layer-3 attached source on BGW BL Node-1 and a Layer-3 attached receiver on BGW BL Node-2 for the same site, the traffic between these two endpoints flows through the external Layer-3 network and not through the fabric.
 - External multicast networks should be connected only through the BGW or BL. If a deployment requires external multicast network connectivity from both the BGW and BL at the same site, make sure that external routes that are learned from the BGW are preferred over the BL. To do so, the BGW must have a lower MED and a higher OSPF cost (on the external links) than the BL.
- The following figure shows a site with external network connectivity through BGW-BLs and an internal leaf (BL1). The path to the external source should be through BGW-1 or BGW-2 (rather than through BL2) to avoid duplication on the remote site receiver.



- MED is supported for iBGP only.

Guidelines and Limitations for TRM Multi-Site with IPv6 Underlay

TRM Multi-Site with IPv6 Underlay has the following configuration guidelines and limitations:

- BGWs will support VXLAN with Protocol-Independent Multicast (PIMv6) Any-Source Multicast (ASM) on the fabric side and Ingress Replication (IPv6) on the DCI side.
- Cisco Nexus 9300-FX, FX2, FX3, GX, GX2, H2R and H1 ToR switches are supported as the leaf VTEP.
- Cisco Nexus X9716D-GX and X9736C-FX line cards are supported only on the spine (EoR).
- When an EoR is deployed as a spine node with Multicast Underlay (PIMv6) Any-Source Multicast (ASM), it is mandatory to configure non-default template using one of the following commands in global configuration mode:
 - **system routing template-multicast-heavy**
 - **system routing template-multicast-ext-heavy**

Configuring TRM with Multi-Site

Before you begin

The following must be configured:

- VXLAN TRM
- VXLAN Multi-Site

This section provides the configuration procedure for Anycast BGW with TRM. For vPC BGW with TRM, vPC must be configured along with VxLAN TRM and VxLAN Multi-site.

Procedure

	Command or Action	Purpose
Step 1	configure terminal Example: switch# configure terminal	Enters global configuration mode.
Step 2	interface nve1 Example: switch(config)# interface nve1	Configures the NVE interface.
Step 3	no shutdown Example: switch(config-if-nve)# no shutdown	Brings up the NVE interface.
Step 4	host-reachability protocol bgp Example: switch(config-if-nve)# host-reachability protocol bgp	Defines BGP as the mechanism for host reachability advertisement.
Step 5	source-interface loopback <i>src-if</i> Example: switch(config-if-nve)# source-interface loopback 0	Defines the source interface, which must be a loopback interface with a valid /32 IP address. This /32 IP address must be known by the transient devices in the transport network and the remote VTEPs. This requirement is accomplished by advertising the address through a dynamic routing protocol in the transport network.
Step 6	multisite border-gateway interface loopback <i>vi-num</i> Example: switch(config-if-nve)# multisite border-gateway interface loopback 1	Defines the loopback interface used for the border gateway virtual IP address (VIP). The border-gateway interface must be a loopback interface that is configured on the switch with a valid /32 IP address. This /32 IP address must be known by the transient devices in the transport network and the remote VTEPs. This requirement is accomplished by advertising the address through a dynamic routing protocol in the transport network. This loopback must be different than the source interface loopback. The range of <i>vi-num</i> is from 0 to 1023.
Step 7	member vni <i>vni-range</i> associate-vrf Example: switch(config-if-nve)# member vni 10010 associate-vrf	Configures the virtual network identifier (VNI). The range for <i>vni-range</i> is from 1 to 16,777,214. The value of <i>vni-range</i> can be a single value like 5000 or a range like 5001-5008.
Step 8	mcast-group <i>ip-addr</i> Example: switch(config-if-nve-vni)# mcast-group 225.0.0.1	Configures the NVE multicast group IP prefix within the fabric.

	Command or Action	Purpose
Step 9	multisite mcast-group <i>dcf-core-group address</i> Example: <pre>switch(config-if-nve-vni) # multisite mcast-group 226.1.1.1</pre>	Configures the multicast group which is used to encapsulate TRM and L2 BUM packets in the DCI core.
Step 10	multisite ingress-replication optimized Example: <pre>switch(config-if-nve-vni) # multisite ingress-replication optimized</pre>	Defines the Multi-Site BUM replication method for extending the Layer 2 VNI.

Configuring TRM Multi-Site with IPv6 Underlay

This section provides the configuration procedure on Anycast BGW for TRM with IPv6 Multicast Underlay with Protocol-Independent Multicast (PIMv6) Any-Source Multicast (ASM) on the fabric side and Ingress Replication (IPv6) on the DCI side.

Before you begin

The following must be configured:

- VXLAN TRM
- VXLAN Multi-Site

SUMMARY STEPS

1. **configure terminal**
2. **interface nve1**
3. **no shutdown**
4. **host-reachability protocol bgp**
5. **source-interface loopback** *src-if*
6. **multisite border-gateway interface loopback** *vi-num*
7. **member vni** *vni-range* **associate-vrf**
8. **mcast-group** *ipv6-addr*
9. **multisite ingress-replication optimized**

DETAILED STEPS

	Command or Action	Purpose
Step 1	configure terminal Example: <pre>switch# configure terminal</pre>	Enters global configuration mode.
Step 2	interface nve1 Example:	Configures the NVE interface.

	Command or Action	Purpose
	<code>switch(config)# interface nve1</code>	
Step 3	no shutdown Example: <code>switch(config-if-nve)# no shutdown</code>	Brings up the NVE interface.
Step 4	host-reachability protocol bgp Example: <code>switch(config-if-nve)# host-reachability protocol bgp</code>	Defines BGP as the mechanism for host reachability advertisement.
Step 5	source-interface loopback <i>src-if</i> Example: <code>switch(config-if-nve)# source-interface loopback 0</code>	Defines the source interface, which must be a loopback interface with a valid /128 IPv6 address. This /128 IPv6 address must be known by the transient devices in the transport network and the remote VTEPs. This requirement is accomplished by advertising the address through a dynamic routing protocol in the transport network.
Step 6	multisite border-gateway interface loopback <i>vi-num</i> Example: <code>switch(config-if-nve)# multisite border-gateway interface loopback 1</code>	Defines the loopback interface used for the border gateway virtual IP address (VIP). The border-gateway interface must be a loopback interface that is configured on the switch with a valid /128 IPv6 address. This /128 IPv6 address must be known by the transient devices in the transport network and the remote VTEPs. This requirement is accomplished by advertising the address through a dynamic routing protocol in the transport network. This loopback must be different than the source interface loopback. The range of <i>vi-num</i> is from 0 to 1023.
Step 7	member vni <i>vni-range</i> associate-vrf Example: <code>switch(config-if-nve)# member vni 90001 associate-vrf</code>	Configures the virtual network identifier (VNI). The range for <i>vni-range</i> is from 1 to 16,777,214. The value of <i>vni-range</i> can be a single value like 5000 or a range like 5001-5008.
Step 8	mcast-group <i>ipv6-addr</i> Example: <code>switch(config-if-nve-vni)# mcast-group ff03:ff03::101:1</code>	Configures the NVE multicast group IPv6 prefix within the fabric.
Step 9	multisite ingress-replication optimized Example: <code>switch(config-if-nve-vni)# multisite ingress-replication optimized</code>	Defines the Multi-Site replication method for extending TRM functionality across sites.

Verifying TRM with Multi-Site Configuration

To display the status for the TRM with Multi-Site configuration, enter the following command:

Command	Purpose
<code>show nve vni virtual-network-identifier</code>	Displays the L3VNI. Note For this feature, optimized IR is the default setting for the Multi-Site extended L3VNI. MS-IR flag inherently means that it's MS-IR optimized.

Example of the `show nve vni` command:

For IPv4

```
switch(config)# show nve vni 51001
Codes: CP - Control Plane      DP - Data Plane
       UC - Unconfigured      SA - Suppress ARP
       SU - Suppress Unknown Unicast
       Xconn - Crossconnect
       MS-IR - Multisite Ingress Replication

Interface VNI      Multicast-group  State Mode Type [BD/VRF]  Flags
-----
nve1      51001          226.0.0.1       Up   CP   L3 [cust_1]   MS-IR
```

For IPv6

```
switch(config)# show nve vni 90001
Codes: CP - Control Plane      DP - Data Plane
       UC - Unconfigured      SA - Suppress ARP
       S-ND - Suppress ND
       SU - Suppress Unknown Unicast
       Xconn - Crossconnect
       MS-IR - Multisite Ingress Replication
       HYB - Hybrid IRB mode

Interface VNI      Multicast-group  State Mode Type [BD/VRF]  Flags
-----
nve1      90001          ff03:ff03::101:1 Up   CP   L3 [v1]       MS-IR

switch(config)#
```