



Migrating Cisco Nexus 3550-T ExaOS to NX-OS Software

This chapter provides information on migrating *Cisco Nexus 3550-T* from ExaOS to NX-OS Software.

- [Migrating Cisco Nexus 3550-T ExaOS to NX-OS Software, on page 1](#)

Migrating Cisco Nexus 3550-T ExaOS to NX-OS Software

The Cisco Nexus 3550-T migration from ExaOS to NX-OS software workflow involves three steps -

- Configuration Migration
- NX-OS Installation
- Configuration Restoration

Configuration Migration

The following procedure is used for Cisco Nexus 3550-T EXaOS configuration migration to the NX-OS software:

1. Save existing config on ExaOS switch (Copy r s).
2. Copy the **convert_exaos_to_nxos_cli_v1.py** script to the switch. (/mnt/persist/config directory)
3. Enter bash and run **convert_exaos_to_nxos_cli_v1.py** script with input as the startup config file.
 - a. `cd /mnt/persist/config`
 - b. `python3 convert_exaos_to_nxos_cli_v1.py startup.json`
 - c. Generated nxos config file – nxos_startup.cfg
 1. Copy the generated nxos_startup.cfg out of the switch (**scp** to a remote server).
 2. If POAP is enabled, copy the nxos_startup.cfg to the central server.

NX-OS Installation

The following procedure is used for Cisco Nexus 3550-T NX-OS software installation:

1. Copy NX-OS installer image to switch.

Enter bash and copy nxos installer image (for eg. **nxos-wb-installer.10.1.2t.bin**) to /mnt/persist folder and rename it to **onie-installer**.

onie-installer is now the NX-OS installer file.

2. Set next boot to *ONIE* and enable *ONIE boot* in install mode NXOS installer and reboot.

- **Option # 1 : Run the following commands:**

- **/mnt/onie-boot/onie/tools/bin/onie-local-mode -s**
- **/mnt/onie-boot/onie/tools/bin/onie-boot-mode -o install**
- **grub-reboot ONIE**
- Reboot.

- **Option # 2 (Grub menu):**

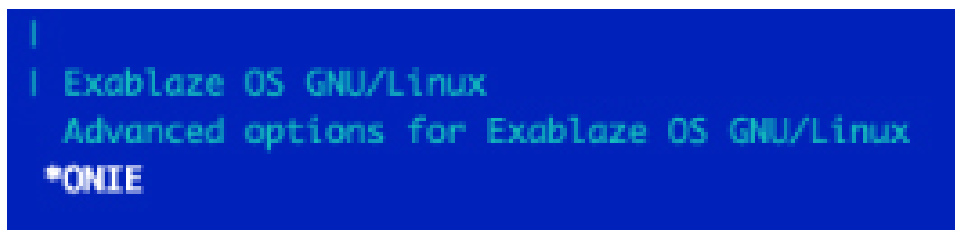
- Reboot (from ExaOS).
- Press Esc+Delete while the box is coming up to land into the GRUB menu
- Choose *ONIE*.

- **Option # 3 (EFI Shell):**

- Reboot (from ExaOS).
- Press Esc+Delete while the box is coming up to land into the EFI menu.
- **#fs0:**
- **#cd EFI**
- **#cd onie**
- **#grubx64.efi**

3. Boot to *ONIE* .

If using **Option# 1** or **Option# 3**, the switch should automatically boot into ONIE.



```

|
| Exablaze OS GNU/Linux
|   Advanced options for Exablaze OS GNU/Linux
| *ONIE

```

- a. The Install OS option should be selected in the next Menu,

If not, select the Install OS option.

```

/-----
-|*ONIE: Install OS
  | ONIE: Rescue
  |   E: Uninstall OS
  | ONIE: Update ONIE
  | ONIE: Embed ONIE
  |
  |

```

- b. Auto NX-OS installer image extraction and installation:

When ONIE boots in Install OS (installer) mode, it should auto discover the installer file (onie-installer) from location:

`/dev/nvme0n1p3/onie-installer` and proceed to install NX-OS. (No manual intervention is needed at this point)

- c. Installation should take a few minutes to complete and the switch should reboot to NX-OS upon successful installation. Onie-installer script will perform a BIOS Upgrade if needed before the reboot at this point.
4. Switch boots up with NXOS. If POAP is disabled, enter the initial config (credentials) and proceed to nxos prompt. Else, the saved config on central POAP server is restored.

Configuration Restoration

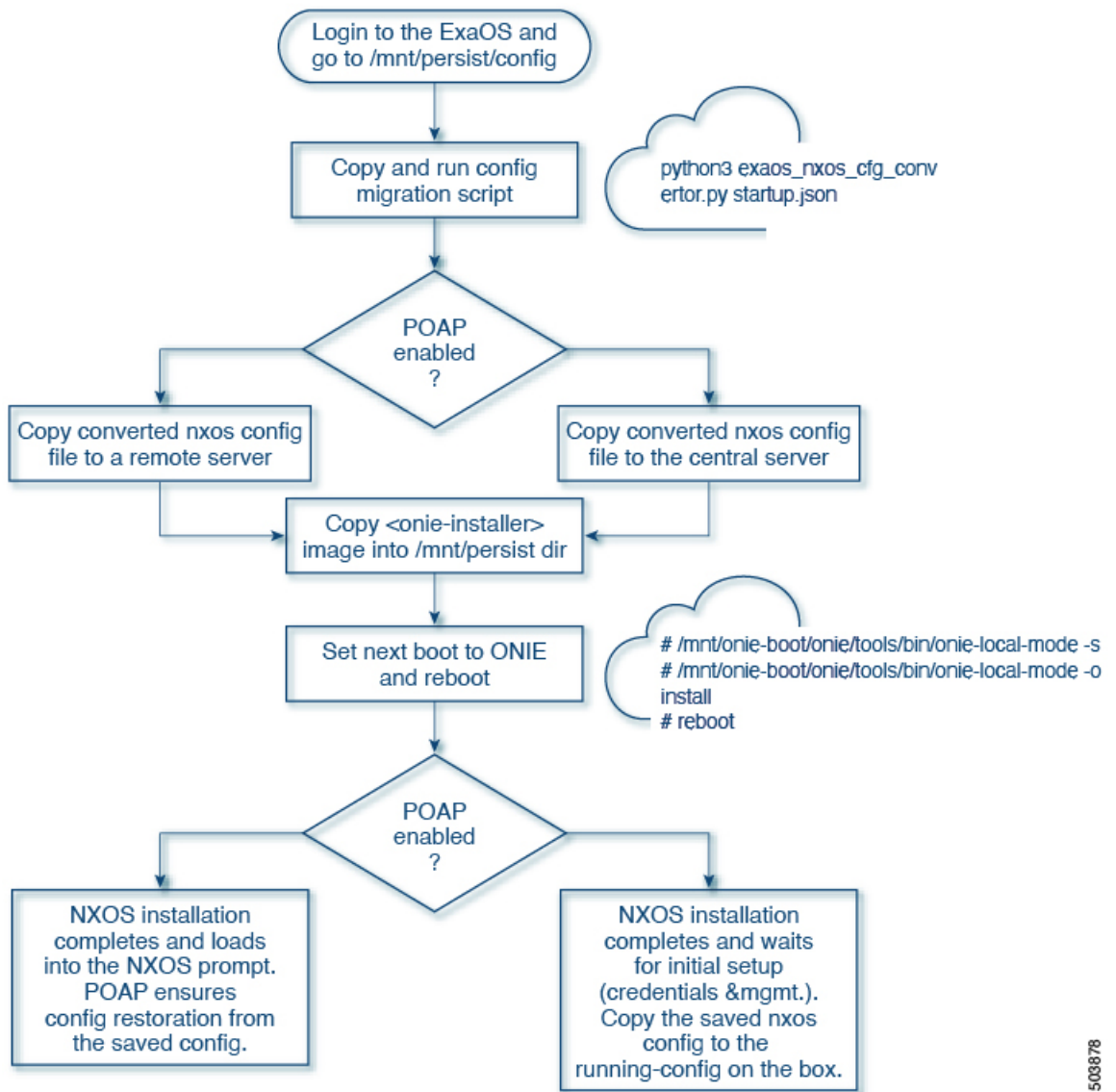
The following procedure is used for Cisco Nexus 3550-T NX-OS configuration restoration after the NX-OS software installation:

Restore switch config (if POAP disabled)

1. Configure management interface
2. Copy the saved `nxos_startup.cfg` file on to bootflash:
3. Copy `bootflash:nxos_startup.cfg` running-config
4. Copy `r s`

Migration Workflow

The following flowchart illustrates the Cisco Nexus 3550-T migration from Exa-OS to NX-OS software workflow -



503878

[Migration Workflow UT Logs](#)