



Cisco Nexus Dashboard Insights Sites,
Release 6.4.1 - For Cisco NDFC or
Standalone NX-OS

Table of Contents

New and Changed Information	2
Sites	3
About Sites	3
Prerequisites	3
Guidelines and Limitations	4
Add Sites	5
Add an Online NDFC Site	5
Add an Online NX-OS Site without a Controller (Standalone NX-OS Site)	9
Add a Snapshot Site	13
Site Details	14
Multicast Routes	18
Working with Sites	19
Copyright	21

First Published: 2024-03-06

Americas Headquarters

Cisco Systems, Inc.

170 West Tasman Drive

San Jose, CA 95134-1706

USA

<http://www.cisco.com>

Tel: 408 526-4000

800 553-NETS (6387)

Fax: 408 527-0883

New and Changed Information

The following table provides an overview of the significant changes up to the current release. The table does not provide an exhaustive list of all changes or the new features up to this release.

Table 1. New Features and Changed Behavior in the Cisco Nexus Dashboard Insights

Feature	Description	Release	Where Documented
Onboard NX-OS sites without a controller	Support for standalone NX-OS sites.	6.4.1	Add an Online NX-OS Site without a Controller (Standalone NX-OS Site)
Telemetry status	You can now view the telemetry status at the site level.	6.4.1	Individual Site Details
Time selection	You can now select a time range in the Site View.	6.4.1	Individual Site Details

This document is available from your Cisco Nexus Dashboard Insights GUI as well as online at www.cisco.com. For the latest version of this document, visit [Cisco Nexus Dashboard Insights Documentation](#).

Sites

About Sites

Sites are on-premises network regions that consist of a group of switches and other networking devices that provide connectivity for your applications and endpoints. You can split sites into different availability zones, such as pods, that are analyzed and managed by Nexus Dashboard Insights.

Types of on-premises sites

- Online sites: Multiple Nexus switches running ACI or NX-OS that can be represented by a controller such as APIC or NDFC and connected to Nexus Dashboard Insights to continuously stream telemetry. Types of online sites include:
 - ACI: Multiple Nexus switches with Cisco ACI and represented by a Cisco APIC.
 - NDFC: Multiple Nexus switches with Cisco NX-OS and represented by a Cisco NDFC.
 - NX-OS: A group of Cisco Nexus 9000 switches running NX-OS without a controller.
- Snapshot sites: Controller-based sites, that are referenced by a snapshot, for use in one-time analysis or demonstrations. They may or may not be connected to Nexus Dashboard Insights over the network.

To learn about how to prepare sites for onboarding, see [Add Sites](#).

A NDFC site is comprised of a fabric running NX-OS that is either fully managed or only monitored by NDFC. All of the switches in the fabric can be analyzed as a part of the site. With a NX-OS based fabric, the fabric could be a NDFC managed fabric or it could be configured using other means such as CLI, Ansible, or any other configuration automation mechanism. For fabrics not using NDFC for configuration management, NDFC must be installed and the fabric must be discovered in read-only or monitor mode. Nexus Dashboard Insights uses NDFC for topology discovery and to identify the role of the switch in the fabric.

A NX-OS site is comprised of Nexus 9000 switches, that run NX-OS without a controller and is connected to Nexus Dashboard.

Once your site is onboarded and fully prepared, Nexus Dashboard Insights will start the site analysis to collect data from your site and display the site information in the **Sites** page. See [Site Details](#). From there, you can view your site's general information, inventory, L2 and L3 connectivity, endpoints, anomalies and advisories and more! To learn more see [Site Details](#).

Prerequisites

- You have configured DNS on the fabric.
- You have configured NTP on the fabric.
- You have configured PTP on the fabric
- You have configured in-band management network with loopback interfaces on the switches and the Nexus Dashboard data interface have routed connectivity to those.

- If the switches are controlled by NDFC and they are discovered using out-of-band management interface, then Nexus Dashboard data interface should have routed connectivity to those.
- You have configured Fabric connectivity in Cisco Nexus Dashboard. See [Cisco Nexus Dashboard Platform Overview](#).
- You have the supported software version for your fabric. See [Nexus Dashboard and Services Compatibility Matrix](#).
- For snapshot sites, you have Python3 installed on your system.
- To onboard a NX-OS site without a controller:
 - You must enable NX-OS Discovery in Nexus Dashboard.
 - You must enable CDP or LLDP in Nexus switches.
 - Nexus switch management IP address should be reachable to Nexus Dashboard management network.
 - Nexus switch in-band port address should be configured on loopback interface and should be reachable to Nexus Dashboard data network.

Guidelines and Limitations

- You cannot onboard a NDFC site with remote authentication using the **Manually Add** option in Nexus Dashboard Insights. You must first add the NDFC site with remote authentication in Nexus Dashboard. You can then onboard the NDFC site using the **Ready to Add** option in NDI.
- Switch name or Host name should be unique across all the fabrics discovered in Nexus Dashboard Insights.
- SVI interfaces are not displayed for Cisco NX-OS switches.
- You must enable the NX-API feature on all Cisco NX-OS switches at the CLI prompt before onboarding the site in Nexus Dashboard Insights by using the following command:

```
switch(config)# feature nxapi
```

Guidelines and Limitations for Cisco NDFC

- Connectivity Analysis is not supported.

Guidelines and Limitations for NX-OS Sites without a Controller (Standalone NX-OS Sites)

- Interface flow rules in the context of Flow Telemetry are not supported.
- Connectivity Analysis is not supported.
- Onboarding a snapshot site is not supported.
- Onboarding NX-OS sites without a controller is supported on Cisco NX-OS release 9.3(10) and later.
- Onboarding an online NX-OS site without a controller, is only supported on a physical Nexus Dashboard cluster. Onboarding an online NX-OS site without a controller, is not supported on a virtual Nexus Dashboard cluster.

- You cannot onboard standalone NX-OS sites and ACI sites in the same Nexus Dashboard cluster.
- Only Nexus Dashboard Insights deployment mode is supported to onboard NX-OS Standalone sites. The following deployment modes are not supported and option to enable NX-OS Discovery for onboarding NX-OS Standalone sites would be unavailable.
 - NDI and NDFC
 - NDI and NDO

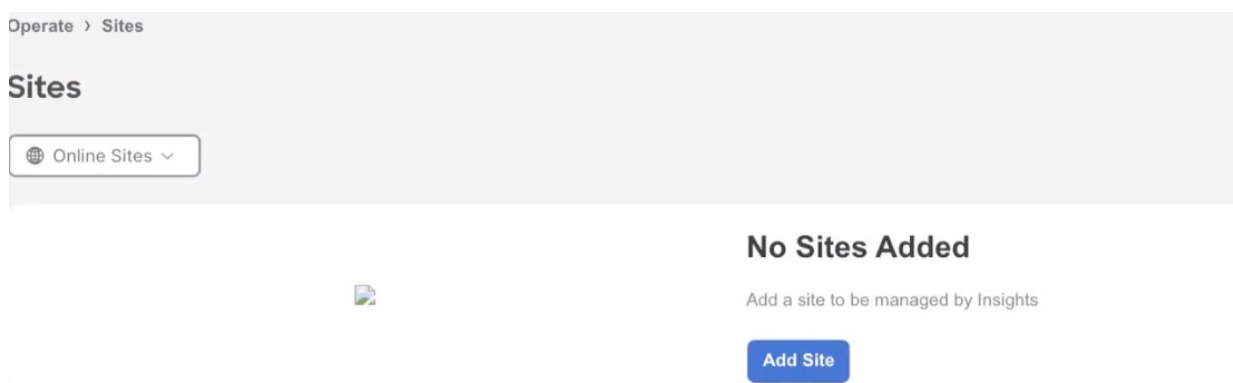
Add Sites

You can add a site to Nexus Dashboard Insights using the following methods:

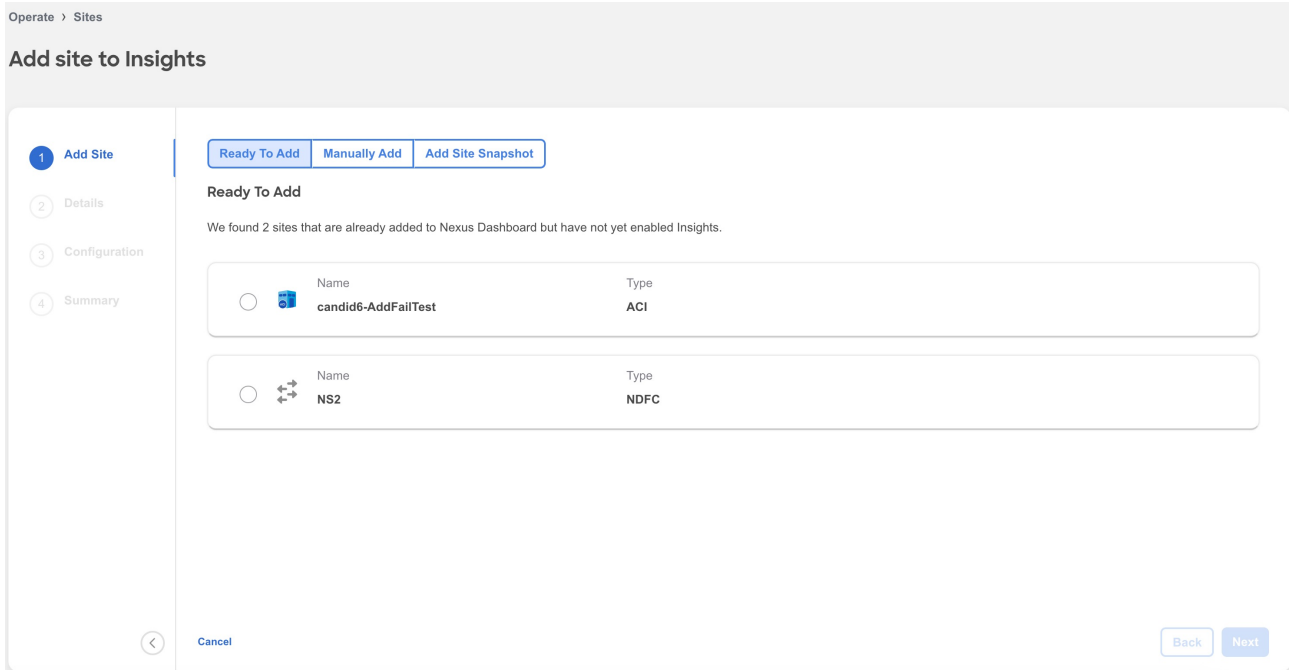
- Online Sites
 - Enable the site that has already been added to Nexus Dashboard. Sites added to the Nexus Dashboard are not enabled in the services by default, so you will need to explicitly enable them directly from Nexus Dashboard Insights.
 - Add a site to Nexus Dashboard and then enable the site in a single workflow in Nexus Dashboard Insights.
- Snapshot sites
 - Add a snapshot site.

Add an Online NDFC Site

1. Navigate to **Manage > Sites**.
2. Click **Add Site**.
 - a. If you are adding a site in Nexus Dashboard Insights for the very first time, you will receive the following message. Click **Add Site** to proceed.

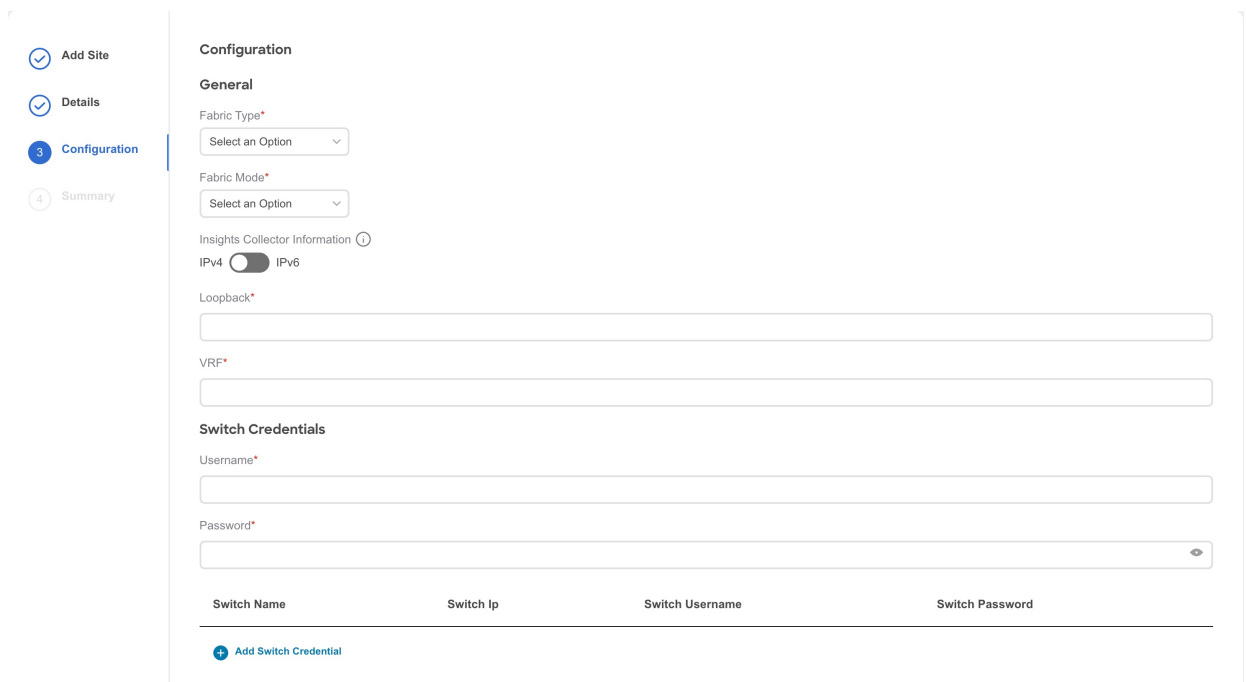


3. To enable a site that has been already added to Nexus Dashboard, select **Ready to Add**. The sites added to Nexus Dashboard are displayed. To add a site to Nexus Dashboard, see [Cisco Nexus Dashboard Sites Management](#).



4. Complete the following fields for **Ready to Add**.

- a. Select the NDFC site.
- b. Click **Next**.
- c. Select the site location from the map to identify the site on Nexus Dashboard.
- d. Click **Next**.



- e. From the **Fabric Type** drop-down menu, select the fabric type. The options are **Classic**, **VXLAN** or **SR-MPLS**. Choose SR-MPLS option to set up flows for SR-MPLS in a NX-OS fabric. Enhanced Classic LAN is not supported for NDFC sites.
- f. From the **Fabric Mode** drop-down menu, select the fabric mode. The options are **Managed** or **Monitored**. In Managed mode, Nexus Dashboard Insights will deploy telemetry configuration to all switches in the fabric. In monitored mode, Nexus Dashboard Insights will not deploy telemetry configuration to all switches in the fabric.

- g. Use toggle to select IPv4 or IPv6 to onboard the site. Based on this setting, Nexus Dashboard Insights will configure its collector to receive telemetry from this site. This setting should match your sites IP address configuration.
- h. In the **Loopback** field, enter the loopback configured on the switches that provide connectivity to the Nexus Dashboard in-band IP address.
- i. In the **VRF** field, enter the VRF name associated with the loopback interfaces. This is the VRF that provides connectivity to the Nexus Dashboard in-band IP addresses.



Default and non-default VRFs are supported. In VXLAN/EVPN fabrics they must be part of the underlay.

- j. In the **User Name** and **Password** field for Switch Credentials, provide the login credentials for a LAN user with **admin** privileges on the switch you are adding.
 - k. Click **Add Switch Credentials** to add switches to the list and specify their credentials only if the switch credentials do not match the default credentials provided above.
 - i. In the **Switch Name** field, enter the name for the switch.
 - ii. In the **Switch IP** field, enter the IP address for the switch.
 - iii. In the **Switch Username** field, enter the username for the switch.
 - iv. In the **Switch Password** field, enter the password.
 - l. Check the check mark to complete to add your entries, and add additional switches as appropriate.
 - m. Click **Next**.
 - n. Verify the configuration.
 - o. Click **Submit**.
5. To add a site to Nexus Dashboard and then enable the site using Nexus Dashboard Insights, select **Manually Add**.

Add site to Insights

You can add an ACI or NDFC controller to be part of a site.

[What is a Site?](#) | [How to prepare your ACI and NX-OS Site for Insights?](#)

1 Add Site

2 Details

3 Configuration

4 Summary

Ready To Add
Manually Add
Add Site Snapshot

Controller Based Fabric

Add your fabric's host name/IP address and login information below to fetch your fabric and add it to Nexus Dashboard.

Controller Based Fabric
NX-OS Standalone Fabric

Hostname*

Username*

Password*

Domain ⓘ

6. Complete the following fields for **Manually Add**.

- a. Select **Controller Based Fabric**.
- b. In the **Hostname** field, enter the IP address used to communicate with the site's controller.
- c. In the **User Name** and **Password** field, provide the login credentials for a user with **admin** privileges on the site you are adding.
- d. In the **Domain** field, enter the controller login domain name.
- e. Click **Next**.
- f. Enter the site name to identify the site on Nexus Dashboard.
- g. Select the site location from the map to identify the site on Nexus Dashboard.
- h. Click **Next**.
- i. From the **Fabric Type** drop-down list, select the fabric type. The options are **Classic**, **VXLAN** or **SR-MPLS**. Choose SR-MPLS option to set up flows for SR-MPLS in a NX-OS fabric. Enhanced Classic LAN is not supported for NDFC sites.
- j. From the **Fabric Mode** drop-down menu, select the fabric mode. The options are **Managed** or **Monitored**. In Managed mode, Nexus Dashboard Insights will deploy telemetry configuration to all switches in the fabric. In monitored mode, Nexus Dashboard Insights will not deploy telemetry configuration to all switches in the fabric.
- k. Use toggle to select IPv4 or IPv6 to onboard the site. Based on this setting, Nexus Dashboard Insights will configure its collector to receive telemetry from this site. This setting should match your sites IP address configuration.
- l. In the **Loopback** field, enter the loopback configured on the switches that provide connectivity to the Nexus Dashboard in-band IP address.
- m. In the **VRF** field, enter the VRF name associated with the loopback interfaces. This is the VRF

that provides connectivity to the Nexus Dashboard in-band IP addresses.

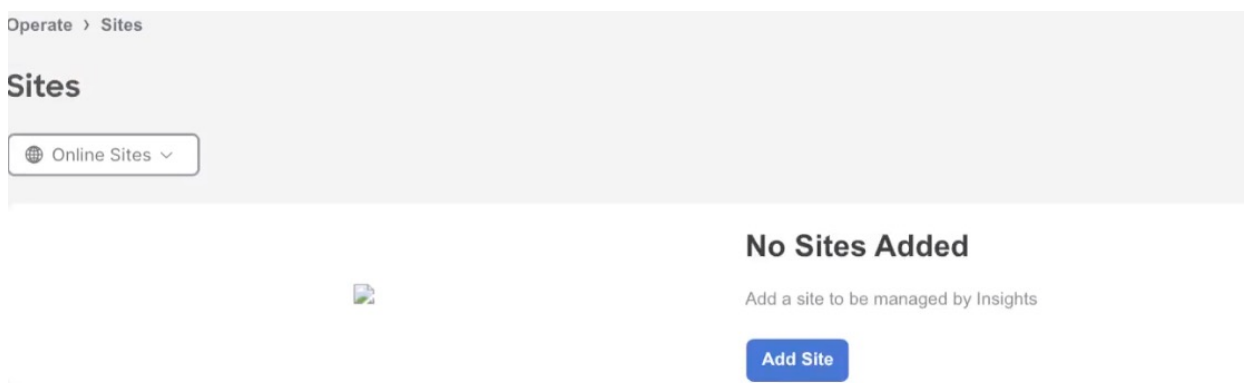


Default and non-default VRFs are supported. In VXLAN/EVPN fabrics they must be part of the underlay.

- n. In the **User Name** and **Password** field for Switch Credentials, provide the login credentials for a LAN user with **admin** privileges on the switch you are adding.
- o. Click **Add Switch Credentials** to add switches to the list and specify their credentials only if the switch credentials do not match the default credentials provided above.
 - i. In the **Switch Name** field, enter the name for the switch.
 - ii. In the **Switch IP** field, enter the IP address for the switch.
 - iii. In the **Switch Username** field, enter the username for the switch.
 - iv. In the **Switch Password** field, enter the password.
- p. Check the check mark to complete to add your entries, and add additional switches as appropriate.
- q. Click **Next**.
- r. Verify the configuration.
- s. Click **Submit**.

Add an Online NX-OS Site without a Controller (Standalone NX-OS Site)

1. Navigate to **Manage > Sites**.
2. Click **Add Site**.
 - a. If you are adding a site in Nexus Dashboard Insights for the very first time, you will receive the following message. Click **Add Site** to proceed.



3. To enable a site that has been already added to Nexus Dashboard, select **Ready to Add**. The sites added to Nexus Dashboard are displayed. To add a site to Nexus Dashboard, see [Cisco Nexus Dashboard Sites Management](#).
4. Complete the following fields for **Ready to Add**.

Add site to Insights

You can add an ACI or NDFC controller to be part of a site.
[What is a Site?](#) | [How to prepare your ACI and NX-OS Site for Insights?](#)

1 Add Site

2 Details

3 Configuration

4 Summary

Ready To Add | Manually Add | Add Site Snapshot

Ready To Add

We found 1 sites that are already added to Nexus Dashboard but have not yet enabled Insights.

Name	Type	Switches
DC-NDI-N02-PND	NX-OS	6

- a. Select the NX-OS site.
- b. Click **Next**.
- c. Select the site location from the map to identify the site on Nexus Dashboard.

Add site to Insights

You can add an ACI or NDFC controller to be part of a site.
[What is a Site?](#) | [How to prepare your ACI and NX-OS Site for Insights?](#)

1 Add Site

2 Details

3 Configuration

4 Summary

Details

Now add a name and location to identify each site on Nexus Dashboard

Name	Type	Switches
DC-NDI-N02-PND	NX-OS	6

General

Name*

Nearest Town or City*

 [See on map](#)

- d. Click **Next**.

Add site to Insights

You can add an ACI or NDFC controller to be part of a site.
[What is a Site?](#) | [How to prepare your ACI and NX-OS Site for Insights?](#)

1 Add Site

2 Details

3 Configuration

4 Summary

Configuration

General

Fabric Type*

Insights Collector Information ⓘ

IPv4 IPv6

Loopback*

VRF*

- e. From the **Fabric Type** drop-down menu, select the fabric type. The options are **Classic**, **VXLAN** or **SR-MPLS**. Choose SR-MPLS option to set up flows for SR-MPLS in a NX-OS fabric.
- f. Use toggle to select IPv4 or IPv6 to onboard the site. Based on this setting, Nexus Dashboard Insights will configure its collector to receive telemetry from this site. This setting should match your sites IP address configuration.
- g. In the **Loopback** field, enter the loopback configured on the switches that provide connectivity to the Nexus Dashboard in-band IP address.
- h. In the **VRF** field, enter the VRF name associated with the loopback interfaces. This is the VRF that provides connectivity to the Nexus Dashboard in-band IP addresses.



Default and non-default VRFs are supported. In VXLAN/EVPN fabrics they must be part of the underlay.

- i. Click **Next**.
 - j. Verify the configuration.
 - k. Click **Submit**.
5. To add a site to Nexus Dashboard and then enable the site using Nexus Dashboard Insights, select **Manually Add**.
6. Complete the following fields for **Manually Add**.

Ready To Add **Manually Add** Add Site Snapshot

Controller Based Fabric

Add your fabric's host name/IP address and login information below to fetch your fabric and add it to Nexus Dashboard.

Controller Based Fabric **NX-OS Standalone Fabric**



NX-OS Discovery

You need to enable fabric discovery in order to add NX-OS switches. This may take a few moments.

Enable NX-OS Discovery

- a. Select **NX-OS Standalone Fabric**.
- b. Click **Enable NX-OS Discovery** to enable NX-OS Discovery in Nexus Dashboard.

Add site to Insights

You can add an ACI or NDFC controller to be part of a site.

[What is a Site?](#) | [How to prepare your ACI and NX-OS Site for Insights?](#)

Ready To Add **Manually Add** Add Site Snapshot

Controller Based Fabric

Add your fabric's host name/IP address and login information below to fetch your fabric and add it to Nexus Dashboard.

Controller Based Fabric **NX-OS Standalone Fabric**

Seed Switch IP Address*

Username*

Password*

Authentication Protocol

MD5

- In the **Seed Switch IP Address** field, enter the IP address of the seed switch management interface.
- In the **User Name** and **Password** field, provide the login credentials for a user with **admin** privileges on the switch you are adding.
- From the **Authentication Protocol** drop-down list, select the protocol.
- Click **Next**.

Add site to Insights

You can add an ACI or NDFC controller to be part of a site.

[What is a Site?](#) | [How to prepare your ACI and NX-OS Site for Insights?](#)

Details

Now add a name and location to identify each site on Nexus Dashboard

Type Seed Switch

NX-OS

General

Name*

Nearest Town or City*

San Jose, CA, United States [See on map](#)

- Enter the NX-OS site name to identify the site on Nexus Dashboard.
- Select the NX-OS site location from the map to identify the site on Nexus Dashboard.
- Select the switches to be added to the site.

j. Click **Next**.

Add site to Insights

You can add an ACI or NDFC controller to be part of a site.

[What is a Site?](#) | [How to prepare your ACI and NX-OS Site for Insights?](#)

✓ Add Site


✓ Details

✓ Switch Selection

4 Configuration

5 Summary

Configuration

Name	Type	Seed Switch
 DC-NDI-N02-PND	NX-OS	<input type="text"/>

General

Fabric Type*

VXLAN

Insights Collector Information ⓘ

IPv4 IPv6

Loopback*

0

VRF*

default

- k. From the **Fabric Type** drop-down menu, select the fabric type. The options are **Classic**, **VXLAN** or **SR-MPLS**. Choose SR-MPLS option to set up flows for SR-MPLS in a NX-OS fabric.
- l. Use toggle to select IPv4 or IPv6 to onboard the site. Based on this setting, Nexus Dashboard Insights will configure its collector to receive telemetry from this site. This setting should match your sites IP address configuration.
- m. In the **Loopback** field, enter the loopback configured on the switches that provide connectivity to the Nexus Dashboard in-band IP address.
- n. In the **VRF** field, enter the VRF name associated with the loopback interfaces. This is the VRF that provides connectivity to the Nexus Dashboard in-band IP addresses.



Default and non-default VRFs are supported. In VXLAN/EVPN fabrics they must be part of the underlay.

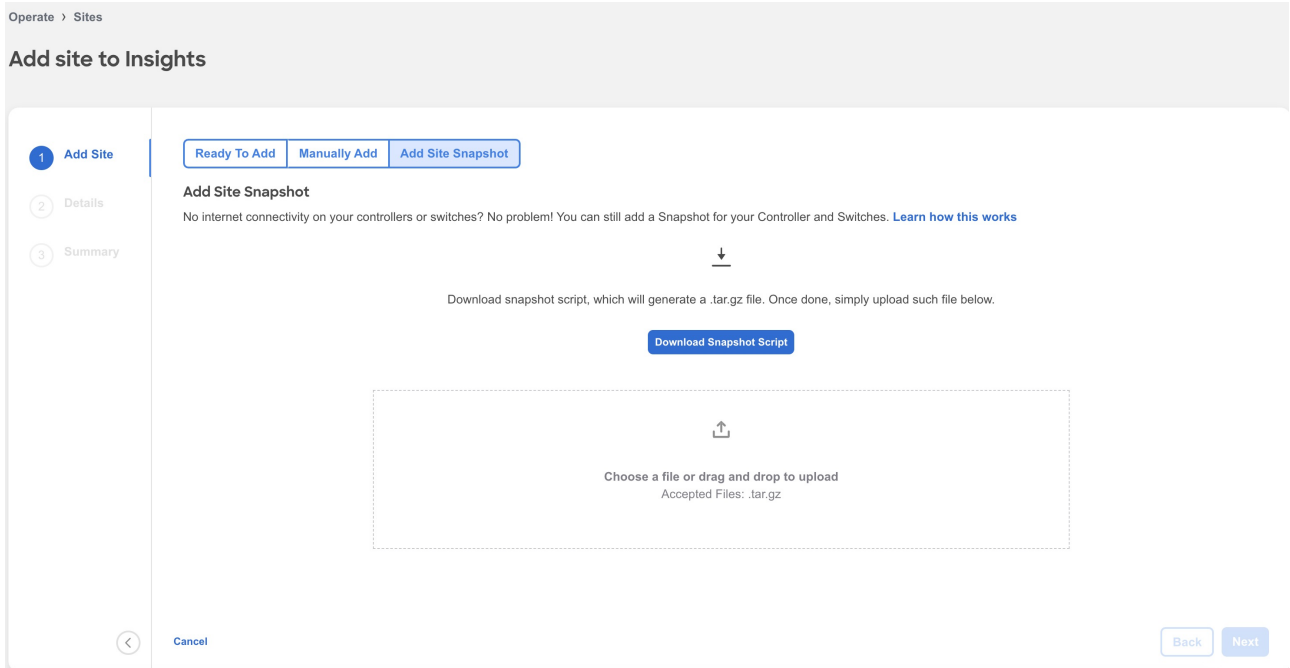
o. Click **Next**.

p. Verify the configuration.

q. Click **Submit**.

Add a Snapshot Site

1. Navigate to **Manage > Sites**.
2. Click **Add Site**.
3. To add a snapshot site, select **Add Site Snapshot**.



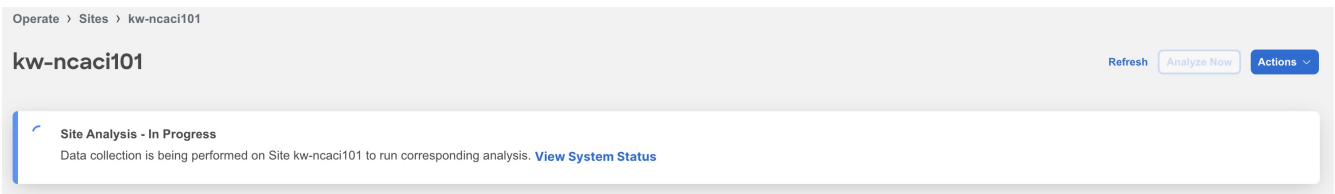
4. Click **Download Snapshot Script** to download the **data-collectors.tar.gz** to your machine.
5. Extract the file you downloaded and run the data collection script. Follow the instructions provided in the readme.md file. After the script is completed successfully, the data is collected in a **<filename>.tar.gz** file.



The collection script requires that you have Python3 installed on your system.

6. Upload the file in Nexus Dashboard Insights and click **Next**
7. Enter the site name to identify the site on Nexus Dashboard.
8. Select the site location from the map to identify the site on Nexus Dashboard.
9. Click **Next**.
10. Verify the configuration.
11. Click **Submit**.

Once your site is onboarded and fully prepared, Nexus Dashboard Insights will start the analysis to collect data from your site and display the site information in the **Sites** page. See [Site Details](#). The Site Analysis banner displays the progress of the analysis. The time to run the analysis depends on the size of the fabric.



Site Details

In Nexus Dashboard Insights, **Global View** provides bird's eye view of your global network infrastructure for all your sites. The Sites page provides the details for an individual site.

Site Details in Global View

After you add the first site, **Global View** gives you a bird’s eye view of your global network infrastructure for all your sites, their locations, and the key health metrics.

Navigate to **Overview > Global View**.

The map visually shows the physical location and total number of your sites in each continent, and their names. Click a site to jump directly to the details for that site, or scroll down to the Sites area to navigate to your site. You can also use the zoom control icons in the page to change your view of the map.

See an at-a-glance summary for each individual site in the Sites area. It includes their anomaly and advisory health levels, site-external traffic with total data transferred, and connectivity data for endpoints and Layer 3 neighbors. To learn about sites in Global View, see [Journey and Global View](#).

Individual Site Details

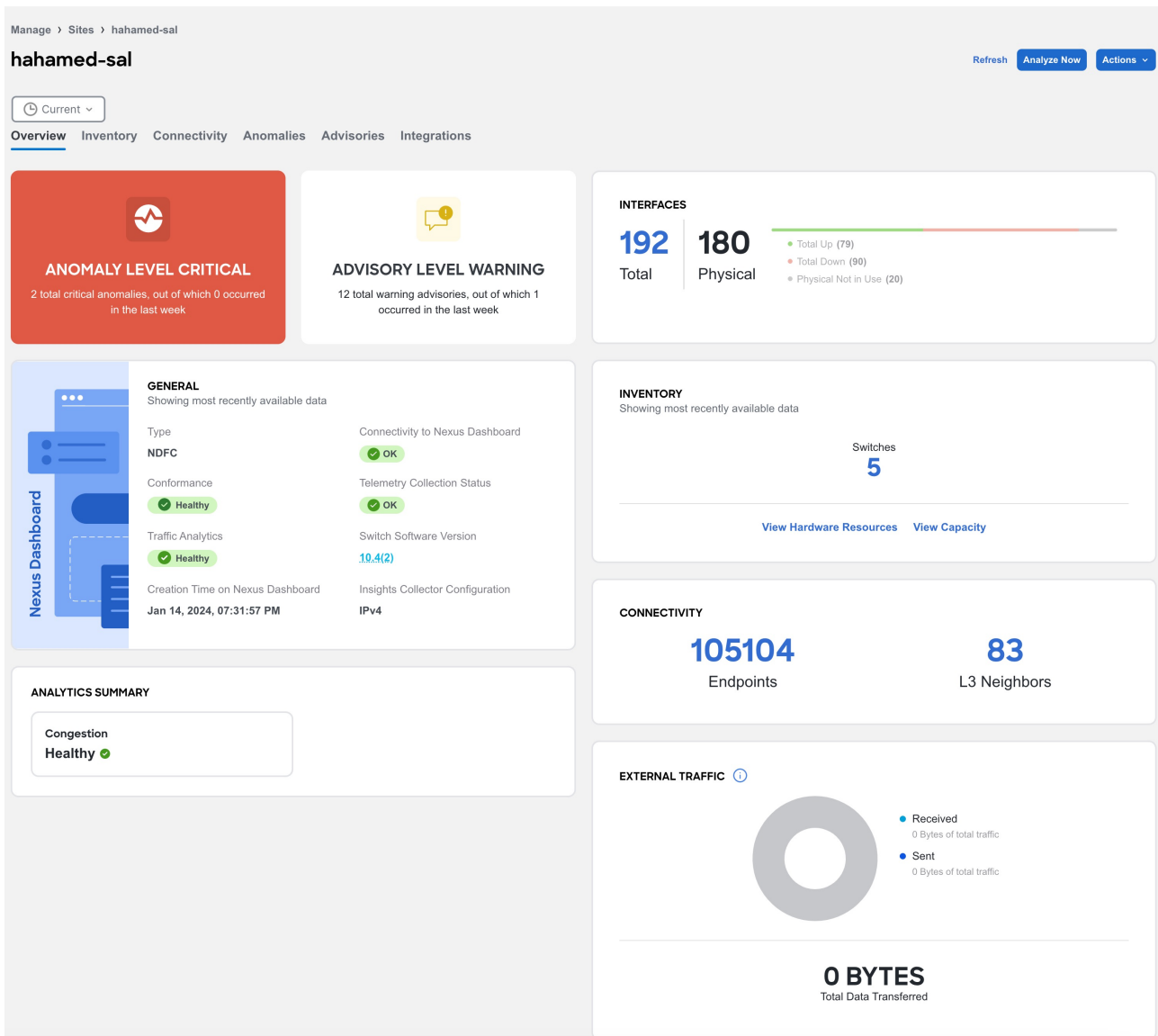
In the Sites page, you can dive into the details for an individual site, switch, or interface, with a comprehensive dashboard, simple topology, per-device summaries and more. You can also manage anomalies and advisories at a site level.

1. Navigate to **Manage > Sites**.
2. Select Online or Snapshot sites from the drop-down list.
3. Use the search bar to filter the sites. The Sites table, displays the site type, connectivity status, anomaly and advisory level, onboarding time.

The screenshot shows the 'Manage > Sites' interface. At the top, there is a breadcrumb 'Manage > Sites', a 'Refresh' button, and a dropdown menu for 'Online Sites'. Below this is a search bar labeled 'Filter by attributes' and an 'Add Site' button. The main content is a table with the following columns: Name, Anomaly Level, Advisory Level, Type, Connectivity to Nexus Dashboard, Software Version, and Creation Time on Nexus Dashboard. The table lists six sites, all with 'Critical' anomaly and advisory levels. The connectivity status for the first two sites is 'OK', while the others are 'Not OK'. The software versions are 9.3(9), 9.3(3), 10.2(4), 10.2(4), 9.3(5)9.3(7), and 9.3(5)9.3(7). The creation times range from Nov 21, 2023, to Nov 28, 2023. At the bottom, it indicates '6 items found' and 'Rows per page 10'.

Name	Anomaly Level	Advisory Level	Type	Connectivity to Nexus Dashboard	Software Version	Creation Time on Nexus Dashboard
Site2-50-switches	Critical	Critical	NX-OS	OK	9.3(9), 9.3(3) View More	Nov 21, 2023, 04:51:18 PM
Site1-100-Switches	Critical	Critical	NX-OS	OK	10.2(4), 10.2(4) View More	Nov 29, 2023, 01:59:04 PM
hahamed-teleixia-13	Critical	Critical	NDFC	Not OK	9.3(5)9.3(7)	Nov 28, 2023, 03:58:51 PM
hahamed-teleixia-12	Critical	Critical	NDFC	Not OK	9.3(5)9.3(7)	Nov 28, 2023, 03:38:51 PM
hahamed-teleixia-11	Critical	Critical	NDFC	Not OK	9.3(5)9.3(7)	Nov 28, 2023, 03:18:51 PM
hahamed-teleixia-10	Critical	Critical	NDFC	Not OK	9.3(5)9.3(7)	Nov 28, 2023, 02:58:51 PM

4. Click the site name to view details for your site. From the Time Selection drop-down menu select the time. All sections will show data based on time selection and data availability. By default, the current time is selected.
5. Click **Overview**.



- a. In the The **Anomaly** and **Advisory** area you can view the status of your anomaly and advisory levels, and a list of your top anomaly and advisory categories.
 - i. Click **Anomaly** to view the level, category, and count for your anomalies for the site.
 - ii. Click the anomaly name to view additional details.
 - iii. Click **Advisory** to view the level, category, and count for your advisories for the site.
 - iv. Click the advisory name to view additional details.
- b. The **General** area shows you the type of site, the software version used, the connectivity status to Nexus Dashboard, conformance status, onboarding time, telemetry status, and Traffic Analytics status. You can see Traffic Analytics status if you have enabled Traffic Analytics in **Flow Collection**. See [Traffic Analytics](#). In the General area hover on the software version and click **View Bugs** to view the active and susceptible bugs for that site. See [Getting Started](#).

Telemetry collection status provides insights into the health and performance of the switches and devices in your network. The different telemetry collection statuses at the site level include:

- i. **OK** - This status indicates that the telemetry data streaming from all the switches to Nexus Dashboard Insights is functioning correctly. This is the desired state, as it ensures

comprehensive monitoring and visibility into the network's performance.

- ii. **Not OK** - This status indicates the telemetry data streaming from all the switches to Nexus Dashboard Insights is not functioning correctly. This could be as a result of various problems such as network outages, misconfigurations, or hardware failures.
 - iii. **Partial OK** - This status indicates that telemetry data streaming from all the switches to Nexus Dashboard Insights is not functioning correctly from some of the switches but it is functioning correctly from others. This suggests an inconsistent or partial telemetry data flow within the network which could be caused by various factors, such as switch-specific issues or misconfigurations on some switches.
- c. In the **External Traffic** area, you can see the External Traffic that the site has sent and received in the last 7 days. The donut helps view the how much traffic is sent and received by the site. Click the information icon to view more information about what External Traffic is and how it can be measured for the different types of sites.
 - d. In the **Interfaces** area, you can see the summary of the interfaces for the site. Click **Total** to view additional details such as Anomaly Level, Admin Status, Operational Status, and Interface Type. Click the interface name to view additional details.
 - e. In the **Connectivity** area, you can view details about your endpoints, and L3 neighbors.
 - f. In the **Inventory** area, you can view the summary of the controllers and switches for the site.
 - i. Click **View Hardware Resources** to view the hardware resources for the site. Click and choose a resource from the **Top Devices By** drop-down list to see a graph for that resource. In the table that follows, see the resource usage by switch. Click the switch name to view additional details.
 - ii. Click **View Capacity** to view the different resources with their maximum capacity and current usage. Site Summary shows you the trends for the week, as well as the capacity by resource for the entire fabric. You see the number of resources used out of the total available capacity for each resource in this site (for example, Bridge Domains 2829 of 15000). The percentage indicates the percentage of resource used. The Switch Summary displays the capacity breakout of resources by switch. The graph shows you the timeline for the parameter that you have selected from the **Top Switches By** drop-down list. In the table, click Operational Resources, Configuration Resources, or Hardware Resources, to see the capacity and usage for each switch in the site.
 - g. In the **Analytics Summary** area, you can view the congestion score for the switch. See [Inventory](#).
6. Click **Inventory** to view the the controllers and switches information for the site. To learn more, see [Inventory](#).
 7. Click **Connectivity** to view the details of interfaces, endpoints, L3 neighbors, vPC Domains, flows for the site. To learn more, see [Inventory](#). Starting from Nexus Dashboard Insights Release 6.3.1, you can also view Multicast Route details for a site. See [Multicast Routes](#).
 8. Click **Anomalies** to view all the anomalies for the site. To learn more, see [Anomalies and Advisories](#).
 9. Click **Advisories** to view all the advisories for the site. To learn more, see [Anomalies and Advisories](#).
 10. Click **Integrations** to view all the integrations associated with the site. To learn more, see [Integrations](#).
 11. Click **File History** to view he history of files that are attached to the snapshot site. It shows the file

name, the file size, when the file was uploaded, upload status, and when the last analysis was run.



File History is displayed only for snapshot sites.

- a. For the currently active snapshot, which is the latest file that you uploaded, you can click **Run Analysis** to run the same snapshot analysis again. This can be useful when additional features are added and you want to re-run an analysis so that the additional features are included in your analysis.
- b. You can also upload a snapshot file for the same site at a different time interval. Click **Upload File** to upload the file and then click **Run Analysis** to run the snapshot analysis.

Multicast Routes

Starting from Nexus Dashboard Insights Release 6.3.1, you can view Multicast Route details for NDFC sites.

In the Multicast Dashboard, you can view the following information for a NDFC fabric:

- Top groups by traffic
- Top groups by receivers

Prerequisites

Ensure that you have executed the following commands on the Nexus switch.

```
switch(config)# hardware profile multicast flex-stats-enable
```

```
switch(config)# multicast flow-path export
```

```
switch(config)# copy running-config startup-config
```

```
switch(config)# reload
```



You must also execute the command **copy running-config startup-config** and **reload** for the changes to take effect.

Guidelines and Limitations

- Multicast route is only supported on Cisco NX-OS Release 10.3(3)F and later.
- Multicast route is only supported for Classic VLAN Fabric.
- Multicast route is only supported for IPv4 addresses.
- Supported scale limits per site: 2000 multicast groups, 16000 S,G entries, 8K routed interfaces.
- When First Hop Router for multicast or the multicast source is configured outside the fabric, Multicast Routes are not displayed in the UI.

View Multicast Routes

1. Navigate to **Manage > Sites**.
2. Select Online or Snapshot sites from the drop-down list.
3. Click the site name to view the site details.
4. Choose **Connectivity > Multicast Routes**.
5. In the Multicast page, you can view the information such as multicast groups, sources sending to this group, sending rate per source, number of receivers for this group, VRF.

Operate > Sites > Classic-Mcast

Classic-Mcast

Refresh Analyze Now Actions

Overview Inventory **Connectivity** Anomalies Advisories Integrations

Interfaces L3 Neighbors Endpoints vPC Domains **Multicast Routes** Flow Record History Flows

Filter

Multicast Group	Sources	Current Sender Bytes Rate	Current Sender Packets Rate	Average Sender Bytes Rate	Average Sender Packets Rate	Receivers	VRF
235.1.1.1	25.6.0.2	0 Bps	0 per second	0 Bps	0 per second	5	default
235.1.1.2	25.6.0.3	0 Bps	0 per second	0 Bps	0 per second	5	default
235.1.1.3	25.6.0.4	0 Bps	0 per second	0 Bps	0 per second	5	default
235.1.1.4	25.6.0.5	0 Bps	0 per second	0 Bps	0 per second	5	default
235.1.1.5	25.6.0.6	0 Bps	0 per second	0 Bps	0 per second	5	default
235.1.1.6	25.6.0.7	0 Bps	0 per second	0 Bps	0 per second	5	default
235.1.1.7	25.6.0.8	0 Bps	0 per second	0 Bps	0 per second	5	default
235.1.1.8	25.6.0.9	0 Bps	0 per second	0 Bps	0 per second	5	default
235.1.1.9	25.6.0.10	0 Bps	0 per second	0 Bps	0 per second	5	default
235.1.1.10	25.6.0.11	0 Bps	0 per second	0 Bps	0 per second	5	default

6. Click the multicast group to view additional information for sources and receivers.
 - a. Click **Sources** to view information such as source IP address, switch name, interface

Multicast Group Information for 235.1.1.1 as of the last hour

Sources Receivers

Filter by attributes

Source IP Address	Connected To	Interface	Current Sender Bytes Rate	Current Sender Packets Rate	Average Sender Bytes Rate	Average Sender Packets Rate	Receivers
25.6.0.2	C93180YC-FX	eth1/17	0 Bps	0 per second	0 Bps	0 per second	5

- b. Click **Receivers** to view information such as switch name, receiver count, uptime, L3 interface.

Multicast Group Information for 235.1.1.1 as of the last hour

Sources **Receivers**

Filter by attributes

Sources	Receiver(s)	Connected To	L3 Interface	Interface	Uptime
25.6.0.2	5	C93360YC-FX2-1	vlan25	po501 po500	2d 9hr 53m 45s
25.6.0.2	5	C93360YC-FX2-1	vlan26	po500 po501	2d 9hr 53m 45s

Working with Sites

1. Navigate to **Manage > Sites**.

2. To add a site, click **Add Site**. See [Add Sites](#).
3. Select Online or Snapshot sites from the drop-down list.
4. Click the site name to view the Site Details.

Operate > Sites > kw-ncaci101

kw-ncaci101 Refresh Analyze Now Actions

Overview Inventory Connectivity Anomalies Advisories Integrations

Anomaly Level Major
22 total major anomalies, out of which 22 occurred in the last week

Advisory Level Major
1 total major advisory, out of which 1 occurred in the last week

Interfaces
282 Total 282 Physical

- Total Up (24)
- Total Down (258)
- Physical Not in Use (0)

Edit Site
View in Topology
System Status
Pause Telemetry Collection

5. From the Actions drop-down menu, select **Edit Site** to edit the site details. After you update the information, click **Save**.
6. From the Actions drop-down menu, select **View in Topology** to view the topology for the site.
7. From the Actions drop-down menu, select **System Status** to view the status of the data analysis for your site. See [Getting Started](#).
8. To delete a site from Nexus Dashboard Insights, perform the following steps:
 - a. From the Actions drop-down menu, select **Pause Telemetry Collection** to pause data collection.
 - b. From the Actions drop-down menu, select **Remove from Insights** to remove the site. The site is removed from Nexus Dashboard Insights only and not from Nexus Dashboard.
9. From the Actions drop-down menu, select **Resume Telemetry Collection** to resume data collection.
10. Click **Analyze Now** to perform an on-demand analysis. Select the service such as Assurance, Bug Scan, or Best Practices and click **Run Now**. See [Getting Started](#).

Copyright

THE SPECIFICATIONS AND INFORMATION REGARDING THE PRODUCTS IN THIS MANUAL ARE SUBJECT TO CHANGE WITHOUT NOTICE. ALL STATEMENTS, INFORMATION, AND RECOMMENDATIONS IN THIS MANUAL ARE BELIEVED TO BE ACCURATE BUT ARE PRESENTED WITHOUT WARRANTY OF ANY KIND, EXPRESS OR IMPLIED. USERS MUST TAKE FULL RESPONSIBILITY FOR THEIR APPLICATION OF ANY PRODUCTS.

THE SOFTWARE LICENSE AND LIMITED WARRANTY FOR THE ACCOMPANYING PRODUCT ARE SET FORTH IN THE INFORMATION PACKET THAT SHIPPED WITH THE PRODUCT AND ARE INCORPORATED HEREIN BY THIS REFERENCE. IF YOU ARE UNABLE TO LOCATE THE SOFTWARE LICENSE OR LIMITED WARRANTY, CONTACT YOUR CISCO REPRESENTATIVE FOR A COPY.

The Cisco implementation of TCP header compression is an adaptation of a program developed by the University of California, Berkeley (UCB) as part of UCB's public domain version of the UNIX operating system. All rights reserved. Copyright © 1981, Regents of the University of California.

NOTWITHSTANDING ANY OTHER WARRANTY HEREIN, ALL DOCUMENT FILES AND SOFTWARE OF THESE SUPPLIERS ARE PROVIDED "AS IS" WITH ALL FAULTS. CISCO AND THE ABOVE-NAMED SUPPLIERS DISCLAIM ALL WARRANTIES, EXPRESSED OR IMPLIED, INCLUDING, WITHOUT LIMITATION, THOSE OF MERCHANTABILITY, FITNESS FOR A PARTICULAR PURPOSE AND NONINFRINGEMENT OR ARISING FROM A COURSE OF DEALING, USAGE, OR TRADE PRACTICE.

IN NO EVENT SHALL CISCO OR ITS SUPPLIERS BE LIABLE FOR ANY INDIRECT, SPECIAL, CONSEQUENTIAL, OR INCIDENTAL DAMAGES, INCLUDING, WITHOUT LIMITATION, LOST PROFITS OR LOSS OR DAMAGE TO DATA ARISING OUT OF THE USE OR INABILITY TO USE THIS MANUAL, EVEN IF CISCO OR ITS SUPPLIERS HAVE BEEN ADVISED OF THE POSSIBILITY OF SUCH DAMAGES.

Any Internet Protocol (IP) addresses and phone numbers used in this document are not intended to be actual addresses and phone numbers. Any examples, command display output, network topology diagrams, and other figures included in the document are shown for illustrative purposes only. Any use of actual IP addresses or phone numbers in illustrative content is unintentional and coincidental.

The documentation set for this product strives to use bias-free language. For the purposes of this documentation set, bias-free is defined as language that does not imply discrimination based on age, disability, gender, racial identity, ethnic identity, sexual orientation, socioeconomic status, and intersectionality. Exceptions may be present in the documentation due to language that is hardcoded in the user interfaces of the product software, language used based on RFP documentation, or language that is used by a referenced third-party product.

Cisco and the Cisco logo are trademarks or registered trademarks of Cisco and/or its affiliates in the U.S. and other countries. To view a list of Cisco trademarks, go to this URL: <http://www.cisco.com/go/trademarks>. Third-party trademarks mentioned are the property of their respective owners. The use of the word partner does not imply a partnership relationship between Cisco and any other company. (1110R)

© 2017–2024 Cisco Systems, Inc. All rights reserved.