



Certificates

- [Certificate Management, on page 1](#)

Certificate Management



Note This section to applicable only for DCNM OVA/ISO deployments.

From Release 11.2(1), Cisco DCNM allows new methods and new CLIs for installing, restoring after upgrade, and verifying certificates on the system. You can export certificates from the Active node to the Standby node, to ensure that both peers on the Native HA setup have the same certificates.

In a Cisco DCNM Native HA setup, after you install a CA certificate on the Active node and start the services, the certificates are automatically synchronized with the Standby node. If you need the same internal certificate on both Active and Standby nodes, you must export the certificate from the Active node to the Standby node. This ensures that both the peers on the Cisco Native HA setup have the same certificates.



Note From Release 11.3(1), you must use **sysadmin** role for certificate management.

Cisco DCNM stores two certificates:

- Self-signed certificate, for internal communication between the Cisco DCNM Server and various applications
- CA (Certificate Authority) Signed certificate, for communicating with the external world, such as Web UI.



Note Until you install a CA Signed certificate, Cisco DCNM retains a self-signed certificate for the communicating with the external network.

Best practices for Certificate Management

The following are the guidelines and best practices for Certificate Management in Cisco DCNM.

- Cisco DCNM provides CLI based utilities to display, install, restore, and export or import of certificates. These CLIs are available through SSH console, and only a **sysadmin** user can accomplish these tasks.
- When you install Cisco DCNM, a self-signed certificate is installed, by default. This certificate is used to communicate with the external world. After Cisco DCNM installation, you must install a CA-Signed certificate on the system.
- On Cisco DCNM Native HA setup, we recommend that you install a CA-Signed certificate on the DCNM Active Node. The CA-Signed certificate will synchronize with the Standby node automatically. However, if you want to keep the same internal and CA-Signed certificate on both Active node and Standby node, you must export the certificates from Active node and import it to the Standby node. Both the Active node and Standby node will have the same set of certificates.



Note Compute nodes in a cluster deployment do not require any action, as the compute nodes use internally managed certificates.

- Generate a CSR on Cisco DCNM with a CN (common name). Provide a VIP FQDN (Virtual IP Address FQDN) as CN to install a CA Signed certificate. The FQDN is the fully qualified domain name for the management subnet VIP (VIP of eth0) interface that is used to access Cisco DCNM Web UI.
- If the CA Signed certificate was installed prior to upgrading the Cisco DCNM, then you must restore the CA Signed certificate after you upgrade the Cisco DCNM.



Note You need not take a backup of certificates when you perform inline upgrade or backup and restore.

Display Installed Certificates

You can view the details of the installed certificate by using the following command:

appmgr afw show-cert-details

In the following sample output for the **appmgr afw show-cert-details** command, **CERTIFICATE 1** represents the certificate offered to the external network and to the Web browsers. **CERTIFICATE 2** represents the internally used certificate.

```
dcnm# appmgr afw show-cert-details

****CERTIFICATE 1****
[Certificate available to web gateway. This certificate is offered to webclients]:
-----Web gateway certificate-----
Certificate:
  Data:
    Version: 3 (0x2)
    Serial Number: 4202 (0x106a)
    Signature Algorithm: sha256WithRSAEncryption
    Issuer: C=IN, ST=KA, L=BGL, O=xyz, OU=ABC, CN=<FQDN/IP>
```

```

Validity
  Not Before: Jun  4 13:55:25 2019 GMT
  Not After : Jun  3 13:55:25 2020 GMT
Subject: C=IN, ST=KA9, L=BGL9, O=XYZ123, OU=ABC123, CN=<FQDN/IP>
Subject Public Key Info:
  Public Key Algorithm: rsaEncryption
    Public-Key: (2048 bit)
    Modulus:
      00:bb:52:1e:7f:24:d7:2e:24:62:5a:83:cc:e4:88:
-----Certificate output is truncated to first 15 lines-----

****CERTIFICATE 2****
[Certificate available in keystore(jks). CA signed certificate is installed here till DCNM
version 11.1.x]
If you have upgraded from DCNM version 11.1.x to later version please see installation guide
to restore
CA signed certificate to upgraded version.
-----Keystore certificate-----
alias = sme, storepass = <<storepass-pwd>>
Alias name: sme
Creation date: Oct 14, 2018
Entry type: PrivateKeyEntry
Certificate chain length: 2
Certificate[1]:
Owner: CN=localhost, OU=Data Center, O=Cisco Systems Inc, L=San Jose, ST=CA, C=US
Issuer: CN=dcnmca, OU=Data Center, O=Cisco Systems Inc, L=San Jose, ST=CA, C=US
Serial number: 62044620
Valid from: Sun Oct 14 20:39:39 PDT 2018 until: Fri Oct 13 20:39:39 PDT 2023
Certificate fingerprints:
  MD5:  E5:F8:AD:17:4D:43:2A:C9:EE:35:5F:BE:D8:22:7D:9C
  SHA1: 38:66:F1:CD:10:61:27:E7:43:85:10:41:3D:A3:4B:5C:C9:CC:17:5E
  SHA256:
E0:87:D8:34:71:18:FE:8C:AB:18:0B:D7:85:B1:91:A8:4B:75:A3:91:BA:90:83:46:72:87:FE:FE:FE:04:F0:E1
Signature algorithm name: SHA256withRSA
Subject Public Key Algorithm: 2048-bit RSA key
-----Certificate output is truncated to first 15 lines-----
dcnm#

```



Note <<storepass-pwd>> is the password string generated while installing DCNM Server. This string is located in the <install dir>/dcm/fm/conf/serverstore.properties directory. Fetch the **dcnm.fmserver.token** value for the **storepass-pwd**.

The Web UI refers to the **CERTIFICATE 1** after installation. If **CERTIFICATE 1** is not available, you must stop and restart all applications, using the following commands:



Note Ensure that you follow the same sequence of commands on the Cisco DCNM to troubleshoot this scenario.

On the Cisco DCNM Standalone appliance, run the following commands to stop and start all Cisco DCNM applications to troubleshoot **CERTIFICATE 1**:

```

dcnm# appmgr stop all /* stop all the applications running on Cisco DCNM */
dcnm# appmgr start all /* start all the applications running on Cisco DCNM */

```

On the Cisco DCNM Native HA appliance, run the following commands to stop and start all Cisco DCNM applications to troubleshoot **CERTIFICATE 1**:

For example, let us indicate the Active node as **dcnm1**, and Standby node **dcnm2**.

Stop the applications running on the both the nodes.

```
dcnm2# appmgr stop all /* stop all the applications running on Cisco DCNM Standby Node */
dcnm1# appmgr stop all /* stop all the applications running on Cisco DCNM Active Node */
```

Start the applications on both nodes.

```
dcnm1# appmgr start all /* start all the applications running on Cisco DCNM Active Node*/
dcnm2# appmgr start all /* start all the applications running on Cisco DCNM Standby Node*/
```



Note Ensure that you clear the browser cache before you launch the Cisco DCNM Web UI, using the Management IP Address.

The **CERTIFICATE 1** is displayed in the Security settings on the browser.

Installing a CA Signed Certificate

We recommend that you install a CA Signed certificate as a standard security practice. The CA Signed certificates are recognized, and verified by the browser. You can also verify the CA Signed certificate manually.



Note The Certificate Authority can be an Enterprise Signing Authority, also.

Installing a CA Signed Certificate on Cisco DCNM Standalone Setup

To install a CA Signed certificate on the Cisco DCNM, perform the following steps.

Procedure

Step 1 Logon to the DCNM server via SSH terminal.

Step 2 Generate a CSR on the Cisco DCNM server using the **appmgr afw gen-csr** command:

Note CSR is unique to a Cisco DCNM, and only a corresponding CSR signed certificate must be installed on a given Cisco DCNM.

```
dcnm# appmgr afw gen-csr
Generating CSR....
..
...
-----
Country Name (2 letter code) [XX]:US
State or Province Name (full name) []:CA
Locality Name (eg, city) [Default City]:San Jose
Organization Name (eg, company) [Default Company Ltd]:Cisco
Organizational Unit Name (eg, section) []:DCBG
Common Name (eg, your name or your server's hostname) []:dcnmhost.cisco.com
Email Address []:dcnm@cisco.com
```

```
Please enter the following 'extra' attributes to be sent with your certificate request
A challenge password []: /* This field is not mandatory */
An optional company name []: /* This field is not mandatory */
...
```

A CSR file `dcnmweb.csr` is created in the `/var/tmp/` directory.

```
***** CA certificate installation not completed yet. Please do followings. *****
CSR is generated and placed at /var/tmp/dcnmweb.csr.
Please download or copy the content to your certificate signing server.
```

Step 3 Send this CSR to your Certificate signing server.

Note The CA Signing server is local to your organization.

Step 4 Get the certificate signed by your Certificate Authority.

The Certificate Authority (CA) returns 3 certificates, namely, Primary, Intermediate (also known as Issuing/Subordinate), and Root certificates. Combine all the three certificates into one `.pem` file to import to DCNM.

Step 5 Copy the new CA Signed certificate to Cisco DCNM server.

Ensure that the certificate is located at `/var/tmp` directory on the Cisco DCNM Server.

Step 6 Install the CA Signed certificate on the Cisco DCNM by using the following commands:

Note We recommend that you run the following commands in the same sequence as shown below.

```
dcnm# appmgr stop all /* Stop all applications running on Cisco DCNM
dcnm# appmgr afw install-CA-signed-cert <CA-signed certificate directory>
/* CA-signed certificate with full or relative path */
Making the signed certificate available to web gateway....
```

CA signed certificate `CA-signed-cert.pem` is installed. Please start all applications as followings:

On standalone setup execute: `'appmgr start all'`

Step 7 Restart all applications with the new certificate on Cisco DCNM using the **appmgr start all** command.

```
dcnm# appmgr start all
```

Step 8 Verify the newly installed CA Signed certificate using the **appmgr afw show-cert-details** command.

The system is now armed with the CA Signed certificate, which is verified at the browser.

Note CSR is unique to a Cisco DCNM, and only a corresponding CSR signed certificate must be installed on a given Cisco DCNM.

Installing a CA Signed Certificate on Cisco DCNM Native HA setup

To install a CA Signed certificate on the Cisco DCNM, perform the following steps.



Note We recommend that you run the following commands in the same sequence as shown below.

Procedure

Step 1 On the Active node, logon to the DCNM server via SSH terminal.

Note For example, let us indicate the Cisco DCNM Active and Standby appliances as **dcnm1** and **dcnm2** respectively.

Step 2 Generate a CSR on the Cisco DCNM server using the **appmgr afw gen-csr** command:

Note CSR is unique to a Cisco DCNM, and only a corresponding CSR signed certificate must be installed on a given Cisco DCNM.

```
dcnm1# appmgr afw gen-csr
Generating CSR....
..
...
-----
Country Name (2 letter code) [XX]:US
State or Province Name (full name) []:CA
Locality Name (eg, city) [Default City]:San Jose
Organization Name (eg, company) [Default Company Ltd]:Cisco
Organizational Unit Name (eg, section) []:DCBG
Common Name (eg, your name or your server's hostname) []:dcnmhost.cisco.com
/* Provide a VIP FQDN name of the eth0 interface*/
Email Address []:dcnm@cisco.com

Please enter the following 'extra' attributes to be sent with your certificate request
A challenge password []: /* This field is not mandatory */
An optional company name []: /* This field is not mandatory */
...
```

Note For generating CSR on the Active node, we recommend that you provide a VIP FQDN name of eth0 interface, when for prompted for Common Name.

This FQDN must be the web server address that you enter on the browser to launch the Cisco DCNM Web UI.

A CSR file `dcnmweb.csr` is created in the `/var/tmp/` directory.

```
***** CA certificate installation not completed yet. Please do followings. *****
CSR is generated and placed at /var/tmp/dcnmweb.csr.
Please download or copy the content to your certificate signing server.
```

Step 3 Send this CSR to your Certificate signing server.

Note The CA Signing server is local to your organization.

The CA Signing server can be the CA certificate signing authority in your organizations, or your local CA to your organization.

Step 4 Get the certificate signed by your Certificate Authority.

Step 5 Copy the new CA Signed certificate to Cisco DCNM server.

Ensure that the certificate is located at `/var/tmp` directory on the Cisco DCNM Server.

Step 6 On the Standby node, logon to the DCNM server via SSH terminal.

Step 7 Stop all the applications on the Standby node using the **appmgr stop all** command.

```
dcnm2# appmgr stop all /* Stop all applications running on Cisco DCNM Standby Node
dcnm2#
```

Step 8 On the Active node, stop all the applications by using the **appmgr stop all** command.

```
dcnm1# appmgr stop all /* Stop all applications running on Cisco DCNM Active Node
dcnm2#
```

- Step 9** On the Active node, install the CA Signed certificate on the Cisco DCNM by using the **appmgr afw install-CA-signed-cert** command.

```
dcnm1# appmgr afw install-CA-signed-cert <CA-signed certificate directory>
/* CA-signed certificate with full or relative path */
Making the signed certificate available to web gateway....
```

CA signed certificate CA-signed-cert.pem is installed. Please start all applications as followings:

On standalone setup execute: 'appmgr start all'

- Step 10** On the Active node, restart all applications with the new certificate on Cisco DCNM using the **appmgr start all** command.

```
dcnm1# appmgr start all /* Start all applications running on Cisco DCNM Active Node
```

Ensure that all services on Cisco DCNM Active node is operational before you proceed further.

Note Logon to the Cisco DCNM Web UI and check if the Certificate details are correct.

- Step 11** On the Standby node, restart all applications with the new certificate on Cisco DCNM using the **appmgr start all** command.

```
dcnm2# appmgr start all /* Start all applications running on Cisco DCNM Standby Node
```

This will ensure that the Standby node makes a fresh peer relationship with the Active Node. Therefore, the newly installed CA Signed certificate on the Active node will be synchronized on the Standby node.

- Step 12** Verify the newly installed CA Signed certificate using the **appmgr afw show-cert-details** command, on both Active and Standby nodes.

The system is now armed with the CA Signed certificate, which is verified at the browser.

Note If the Certificates information is not displayed, we recommend that you wait for a few minutes. The Secondary node takes a while to synchronize with the Active node.

If you want to retain the same internal and CA Signed certificate on both peers on a Native HA setup, first install the certificates on the Active node. After installing certificates on the Active node, export the certificates from Active node and import the same certificates to the Standby node.

Exporting certificate from Active Node to Standby Node

The following procedure applies to the Cisco DCNM Native HA setup only. The CA Signed certificate installed on the Active node is always synced to the Standby node. However, the internal certificate differs on both Active and Standby nodes. If you want to keep the same set of certificates on both peers, you must perform the procedure described in this section.



Note You may choose not to export any certificates, because the internal certificates are internal to the system. These certificates can differ on Active and Standby nodes without having any functional impact.

To export the CA Signed certificate from Active node and import the certificate to the Standby node, perform the following procedure.

Procedure

-
- Step 1** On the Active node, logon to the DCNM server via SSH terminal.
- Step 2** Create a certificate bundle, by using the **appmgr afw export-import-cert-ha-peer export** command.
- ```
dcnm1# appmgr afw export-import-cert-ha-peer export
```
- Step 3** Copy the certificate bundle to the Standby node.
- Note** Ensure that you copy the certificate on the Standby node to the location as specified on the SSH terminal.
- Step 4** On the Standby node, stop all the applications by using the **appmgr stop all** command.
- ```
dcnm2# appmgr stop all /* Stop all applications running on Cisco DCNM Standby Node
dcnm2#
```
- Step 5** Import the certificates to the Standby node by using the **appmgr afw export-import-cert-ha-peer import** command.
- The certificates bundle is imported and installed on the Standby node.
- Step 6**
- Step 7** On the Standby node, restart all applications with the new certificate on Cisco DCNM using the **appmgr start all** command.
- ```
dcnm2# appmgr start all /* Start all applications running on Cisco DCNM Standby Node
```
- This ensures that the new imported certificate are effective when applications are started on the Standby node.
- Step 8** On the Standby node, verify the newly imported CA Signed certificate using the **appmgr afw show-cert-details** command.
- The system is now armed with same certificates on both Active and Standby nodes.
- 

## Restoring the certificates after an upgrade

This mechanism applies to Cisco DCNM Upgrade procedure using the inline upgrade process only. This procedure is not required for the backup and restore of data on the same version of the Cisco DCNM appliance.

Note that certificate restore is a disruptive mechanism; it requires you to stop and restart applications. Restore must be performed only when the upgraded system is stable, that is, you must be able to login to Cisco DCNM Web UI. On a Cisco DCNM Native HA setup, both the Active and Standby nodes must have established peer relationship.





**Note** A certificate needs to be restored only in following situations:

- if a CA signed certificate was installed on the system before upgrade, and,
- if you're upgrading from a version prior to 11.2(1) to version 11.2(1) or later.

After upgrading the Cisco DCNM, you must always verify the certificate before restoring to check if **CERTIFICATE 1** is the CA signed certificate. You must restore the certificates, if otherwise.

Verify the certificates using the **appmgr afw show-cert-details** as shown in the sample output below.

```
dcnm# appmgr afw show-cert-details
****CERTIFICATE 1****
[Certificate available to web gateway. This certificate is offered to webclients]:
-----Web gateway certificate-----
Certificate:
 Data:
 Version: 3 (0x2)
 Serial Number: 1575924977762797464 (0x15decf6aec378798)
 Signature Algorithm: sha256WithRSAEncryption
 Issuer: C=US, ST=CA, L=San Jose, O=Enterprise CA inc, OU=Data Center, CN=dcnml.ca.com

 Validity
 Not Before: Dec 9 20:56:17 2019 GMT
 Not After : Dec 9 20:56:17 2024 GMT
 Subject: C=US, ST=CA, L=San Jose, O= Enterprise CA inc, OU=Data Center,
 CN=dcnml.ca.com
 Subject Public Key Info:
 Public Key Algorithm: rsaEncryption
 Public-Key: (2048 bit)
 Modulus:
 00:cf:6e:cd:c6:a9:30:08:df:92:98:38:49:9c:2a:
-----Certificate output is truncated to first 15 lines-----

****CERTIFICATE 2****
[Certificate available in keystore(jks). CA signed certificate is installed here till DCNM
 version 11.1.x]
If you have upgraded from DCNM version 11.1.x to later version please see installation guide
 to restore
CA signed certificate to upgraded version.
-----Keystore certificate-----
Alias name: sme
Creation date: Oct 14, 2018
Entry type: PrivateKeyEntry
Certificate chain length: 2
Certificate[1]:
Owner: CN=localhost, OU=Data Center, O=Cisco Systems Inc, L=San Jose, ST=CA, C=US
Issuer: CN=dcnmca, OU=Data Center, O=Cisco Systems Inc, L=San Jose, ST=CA, C=US
Serial number: 62044620
Valid from: Sun Oct 14 20:39:39 PDT 2018 until: Fri Oct 13 20:39:39 PDT 2023
Certificate fingerprints:
 SHA1: 38:66:F1:CD:10:61:27:E7:43:85:10:41:3D:A3:4B:5C:C9:CC:17:5E
 SHA256:
E0:87:D8:34:71:18:FE:8C:AB:18:0B:D7:85:B1:91:A8:4B:75:A3:91:BA:90:83:46:72:87:FE:FE:FE:04:F0:E1
Signature algorithm name: SHA256withRSA
Subject Public Key Algorithm: 2048-bit RSA key
Version: 3
-----Certificate output is truncated to first 15 lines-----
dcnm#
```

## Restoring Certificates on Cisco DCNM Standalone setup after Upgrade

To restore the certificates after you upgrade the Cisco DCNM Standalone deployment to Release , perform the following:

### Procedure

---

- Step 1** **Note** When you upgrade to Release , a backup of the CA Signed certificate is created.
- After you have successfully upgraded the Cisco DCNM Standalone appliance, logon to the DCNM server via SSH.
- Step 2** Stop all the applications using the following command:  
**appmgr stop all**
- Step 3** Restore the certificate by using the following command:  
**appmgr afw restore-CA-signed-cert**
- Step 4** Enter **yes** to confirm to restore the previously installed certificate.
- Step 5** Start all the applications using the following command:  
**appmgr start all**
- Step 6** Verify the newly installed CA Signed certificate using the **appmgr afw show-cert-details** command.
- The system is now armed with the CA Signed certificate, which is verified at the browser.
- 

## Restoring Certificates on Cisco DCNM Native HA setup after Upgrade

In a Cisco DCNM Native HA setup, the certificate is installed on both the Active and Standby nodes. You must restore the certificate only on the Active node. The certificate will synchronize with the Standby node automatically.

To restore the certificates after you upgrade the Cisco DCNM Standalone deployment to Release , perform the following:

### Procedure

---

- Step 1** Logon to the Cisco DCNM server via SSH.
- Note** For example, let us indicate Active and Standby appliances as **dcnm1** and **dcnm2** respectively.
- Step 2** On the Standby node, stop all the applications using the **appmgr stop all** command.  
dcnm2# **appmgr stop all** /\* Stop all applications running on Cisco DCNM Standby Node
- Step 3** On the Active node, stop all the applications using the **appmgr stop all** command.  
dcnm1# **appmgr stop all** /\* Stop all applications running on Cisco DCNM Active Node
- Step 4** Restore the certificate on the Active node by using the **appmgr afw restore-CA-signed-cert** command.

```
dcnm1# appmgr afw restore-CA-signed-cert
```

**Step 5** Enter **yes** to confirm to restore the previously installed certificate.

**Step 6** On the Active node, start all the applications using the **appmgr start all** command.

```
dcnm1# appmgr start all /* Start all applications running on Cisco DCNM Active Node
```

Ensure that all services on Cisco DCNM Active node is operational before you proceed further.

**Note** Logon to the Cisco DCNM Web UI and check if the Certificate details are correct.

**Step 7** On the Standby node, start all the applications using the **appmgr start all** command.

```
dcnm2# appmgr start all /* Start all applications running on Cisco DCNM Standby Node
```

Wait for some time, while the Standby node synchronizes with the Active node.

**Step 8** Verify the newly installed CA Signed certificate using the **appmgr afw show-cert-details** command, on both Active and Standby nodes.

The system is now armed with the CA Signed certificate, which is verified at the browser.

## Recovering and Restoring Previously Installed CA Signed Certificates

Installing, restoring, managing CA signed certificate is a time-consuming process as a third-party signing server is involved. This may also lead to omissions or mistakes which can result in installing wrong certificates. In such a scenario, we recommend that you restore the certificates that were installed prior to the latest install or upgrade.

To recover and restore the previously installed CA signed certificates, perform the following steps.

### Procedure

**Step 1** Logon to the DCNM server via SSH terminal.

**Step 2** Navigate to the `/var/lib/dcnm/afw/apigateway/` directory.

```
dcnm# cd /var/lib/dcnm/afw/apigateway/
dcnm# ls -ltr /* View the contents of the folder
total 128
-rw----- 1 root root 1844 Nov 18 13:14 dcnmweb.key.2019-11-20T132939-08:00
-rw-r--r-- 1 root root 1532 Nov 18 13:14 dcnmweb.crt.2019-11-20T132939-08:00
-rw----- 1 root root 1844 Nov 20 10:15 dcnmweb.key.2019-11-20T132950-08:00
-rw-r--r-- 1 root root 1532 Nov 20 10:15 dcnmweb.crt.2019-11-20T132950-08:00
-rw----- 1 root root 1844 Dec 22 13:59 dcnmweb.key
-rw-r--r-- 1 root root 1532 Dec 22 13:59 dcnmweb.crt
```

```
.
..
...
```

**dcnmweb.key** and **dcnmweb.crt** are the key and certificate files that are installed on the system, currently. Similar filenames, with timestamp suffix, help you in identifying the key and certificate pairs installed prior to the recent upgrade or restore.

**Step 3** Stop all applications running on Cisco DCNM using **appmgr stop all** command.



- Step 4** Take a backup of `dcnmweb.key` and `dcnmweb.crt` files.
- Step 5** Identify the older key and certificate pair that you want to restore.
- Step 6** Copy the key and certificate pair as **dcnmweb.key** and **dcnmweb.crt** (without timestamp suffix).
- Step 7** Start all applications running on Cisco DCNM using **appmgr start all** command.
- Step 8** Verify the details of the certificate using the **appmgr afw show-cert-details** command. CERTIFICATE 1 is the CA signed certificate.
- Note** If the CA signed certificate is not visible to Cisco DCNM Web UI, or if the DCNM Server sends any failure message, you must reboot the system.
- 

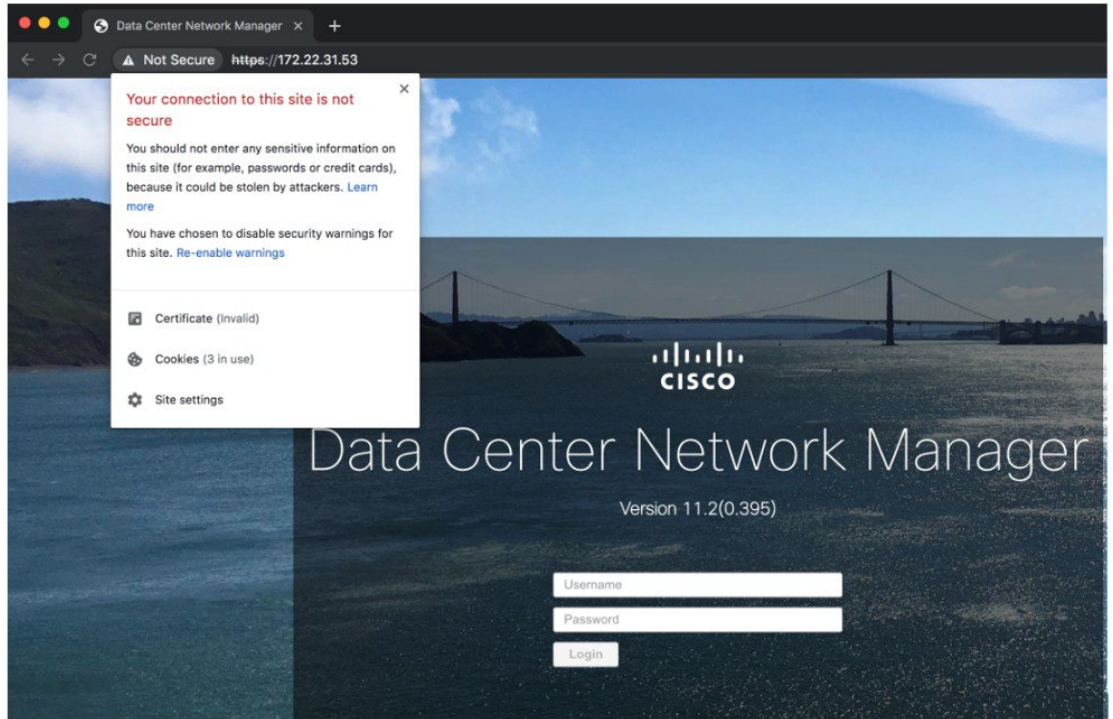
## Verifying the installed certificate

While the installed certificate can be verified using the **appmgr afw show-cert-details** command, the web browser verifies if the certificate is effective or not. Cisco DCNM supports all standard browsers (Chrome, IE, Safari, Firefox). However, each browser display the certificate information differently.

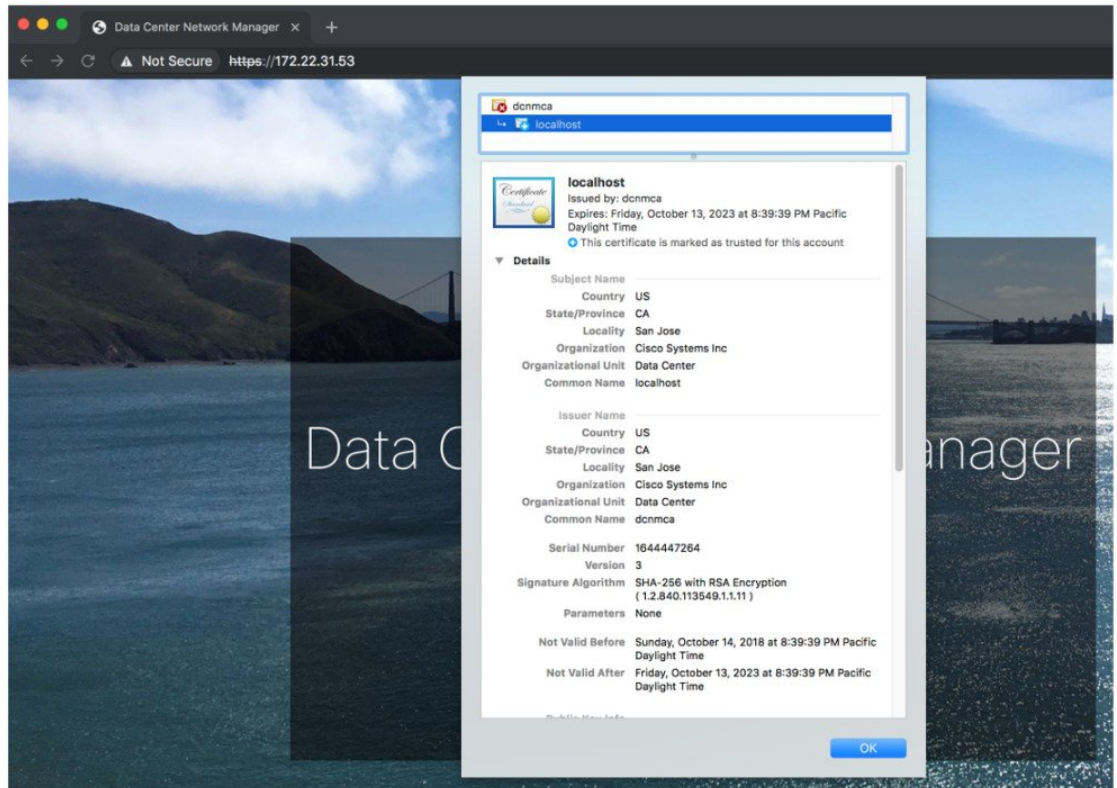
We recommend that you refer to the browser specific information on that browser provider website.

The following snippet is a sample from the Chrome Browser, Version 74.0.3729.169, to verify the certificate.

1. Enter URL **https://<dcnm-ip-address>** or **https://<FQDN>** in the address bar on the browser.  
Press the **Return** key.
2. Based on the type of certificate, the icon on the left of the URL field shows a lock icon [  ] or an alert icon [  ].  
Click on the icon.



- On the card, click **Certificate** field.  
The information in the certificate is displayed.



The information that is displayed must match with the details as displayed on CERTIFICATE 1 when you view the certificate details using the **appmgr afw show-cert-details**.