



## Viewing System Details

---

- [Monitoring VM Host Metrics, on page 1](#)
- [Viewing Application Management Details, on page 4](#)
- [Viewing Cloud Resource Details, on page 5](#)
- [Viewing Operations Details, on page 7](#)
- [Viewing Infrastructure Details, on page 9](#)
- [Viewing Administrative Details, on page 9](#)
- [Viewing Health Details Using the Cisco Cloud APIC GUI, on page 11](#)

## Monitoring VM Host Metrics

Beginning with release 25.0(1), support is available for monitoring metrics for the VM host where the Cisco Cloud APIC is deployed using the Prometheus Node Exporter. The Prometheus Node Exporter provides visibility to a wide variety of hardware and kernel-related metrics, where it collects technical information from Linux nodes, such as CPU, disk, and memory statistics. For overview information on the Prometheus Node Exporter, see:

<https://prometheus.io/docs/introduction/overview/>

If your Cisco Cloud APIC is running on release 25.0(1) or later, the Prometheus Node Exporter is automatically available by default.

### Guidelines and Limitations

HTTP is not supported for monitoring metrics using the Prometheus Node Exporter. Only HTTPS is supported for monitoring metrics using the Prometheus Node Exporter.

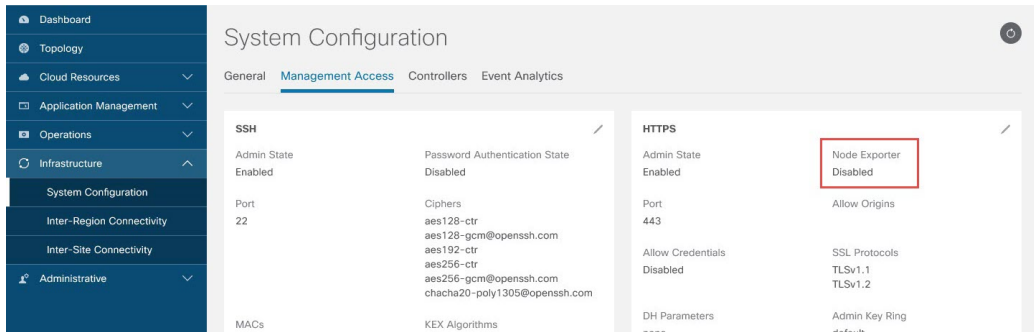
## Monitoring VM Host Metrics Using the GUI

These procedures describe how to enable the Prometheus Node Exporter to monitor VM host metrics using the GUI.

## Procedure

**Step 1** In the Cisco Cloud APIC GUI, navigate to **Infrastructure > System Configuration**, then click on the **Management Access** tab.

**Step 2** In the **HTTPS** area to the right of the window, note the entry in the **Node Exporter** field.

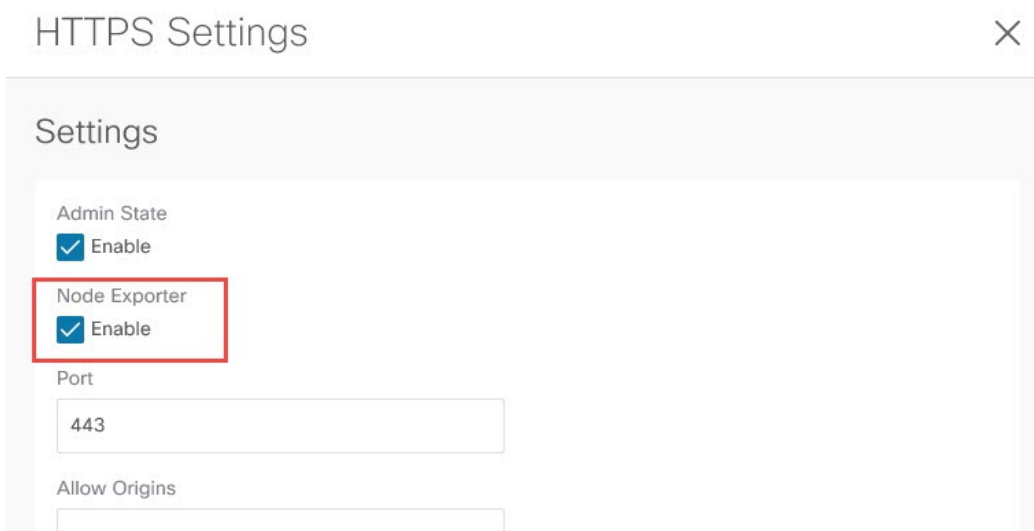


- **Enabled:** The Prometheus Node Exporter has already been enabled. You do not have to continue with these instructions in that case.
- **Disabled:** The Prometheus Node Exporter is not enabled yet. Proceed with these instructions to enable the Prometheus Node Exporter.

**Step 3** Click the pencil icon in the **HTTPS** area to edit the HTTPS settings.

The **HTTPS Settings** window appears.

**Step 4** Locate the **Node Exporter** field and click **Enable**.

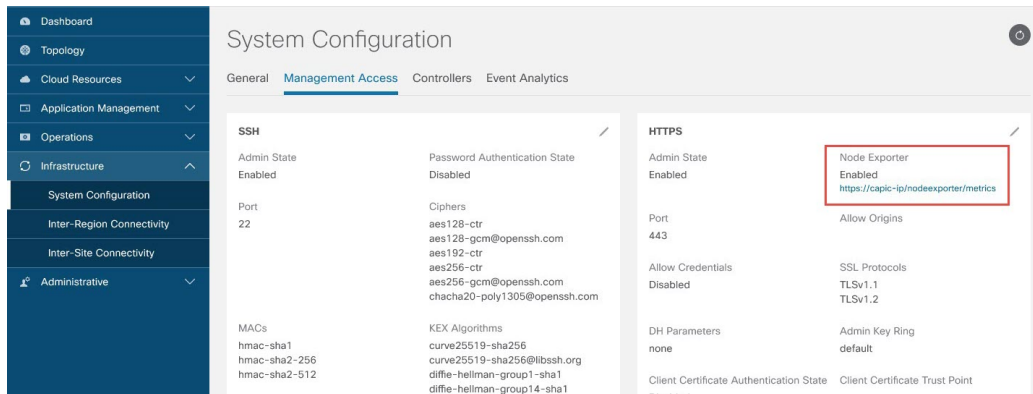


A warning message appears, telling you that saving these settings will restart the web service, and that it will take a moment for it to resume responding to requests. Click **OK** to confirm these changes.

**Step 5** At the bottom of the window, click **Save**.

You are returned to the **System Configuration/Management Access** window. The web service reboots and comes back online in a few seconds.

- Step 6** In the **HTTPS** area to the right of the window, verify that the entry in the **Node Exporter** field is set to **Enabled**. This verifies that the Prometheus Node Exporter is enabled.



- Step 7** Click the link under the **Enabled** text in the **Node Exporter** area. Another tab in your browser appears, showing the metrics for the VM host where the Cisco Cloud APIC is deployed.

## Monitoring VM Host Metrics Using the REST API

These procedures describe how to enable the Prometheus Node Exporter to monitor VM host metrics using the REST API.

### Procedure

- Step 1** To determine if the Prometheus Node Exporter is enabled or not, send the following GET call:

```
GET https://<cloud-apic-ip-address>/api/mo/uni/fabric/comm-default/https.xml
```

Locate the `nodeExporter` field to determine if it is set to `enabled` or `disabled`.

- Step 2** To monitor VM host metrics, send the following post to enable the Prometheus Node Exporter:

```
POST https://<cloud-apic-ip-address>/api/mo/uni/fabric/comm-default/https.xml
<commHttps nodeExporter="enabled" />
```

The metrics are displayed for the VM host where the Cisco Cloud APIC is deployed.

- Step 3** To view the metrics using REST API, send the following GET call:

```
GET https://<cloud-apic-ip-address>/nodeexporter/metrics
```

**Step 4** To disable the Prometheus Node Exporter, send the following post:

```
POST https://<cloud-apic-ip-address>/api/mo/uni/fabric/comm-default/https.xml
<commHttps nodeExporter="disabled" />
```

## Viewing Application Management Details

This section explains how to view application management details using the Cisco Cloud APIC GUI. The application management details include the information of a specific tenant, application profile, EPG, contract, filter, VRF, service, or cloud context profile.

### Procedure

**Step 1** From the **Navigation** menu, choose the **Application Management** tab.

When the **Application Management** tab expands, a list of subtab options appear. See the *Application Management Options* table for more information.

**Table 1: Application Management Subtabs**

| Subtab Name                   | Description   |
|-------------------------------|---|
| <b>Tenants</b>                | Displays tenants as rows in a summary table.  |
| <b>Application Profiles</b>   | Displays application profiles as rows in a summary table.   |
| <b>EPGs</b>                   | Displays an EPGs as rows in a summary table.  |
| <b>Contracts</b>              | Displays a contracts as rows in a summary table.  |
| <b>Filters</b>                | Displays filters as rows in a summary table.  |
| <b>VRFs</b>                   | Displays VRFs as rows in a summary table.   |
| <b>Services</b>               | Contains the following two subtabs and information: <ul style="list-style-type: none"><li>• <b>Devices</b>—Displays the devices as rows in a summary table.</li><li>• <b>Service Graphs</b>—Displays service graphs as rows in a summary table.</li></ul> |
| <b>Cloud Context Profiles</b> | Displays cloud context profiles as rows in a summary table.   |

**Step 2** Click the tab that represents the component with the details you want to view.

A summary table appears with items as rows in the table. For example, if you chose the **Tenants** subtab, a list of tenants appear as rows in a summary table

You can filter the rows by clicking the *Filter by Attributes* bar. Choose the attribute, operator and filter-value. For example, for filtering based on a tenant, choose Name == T1 (where T1 is the name of a tenant).

**Step 3** To view a summary pane, click the row that represents the specific component you want to view.

**Step 4** For more information, double-click the summary table row that represents the specific component you want to view.

A new dialog box appears over the **work** pane with any of the following tabs:

**Note**

The tabs that appear differ between components and configurations.

- **Overview**—Provides a general overview of cloud resources, configuration relationships, and settings of the component.
- **Topology** —Provides visual relationship between an object and other related objects. The chosen object is displayed at the center.
- **Cloud Resources**—Contains a list of subtabs that display the cloud resource information related to the component.
- **Application Management**—Contains a list of subtabs that display the ACI relation information related to the component.
- **Statistics**—Enables you to view statistics based on a chosen sampling interval and statistics type. The **Statistics** tab may contain subtabs, depending on the component you are viewing.
- **Event Analytics**—Contains a list of subtabs that display faults, events, and audit logs.

**Note**

The dialog box that appears over the **work** pane contains an **edit** button in the top-right corner between the **refresh** button and the **Actions** button. When clicked, the **edit** button enables you to edit the chosen component.

---

## Viewing Cloud Resource Details

This section explains how to view cloud resource details using the Cisco Cloud APIC GUI. The cloud resource details include the information about a specific region, VNET, router, security group (application security group/network security group), endpoint, VM, and cloud service.

Beginning with Release 5.0(2), for the **Endpoints** subtab, search based on *Cloud Tag* attribute is supported.

### Procedure

---

**Step 1** From the **Navigation** menu, choose the **Cloud Resources** tab.

When the **Cloud Resources** tab expands, a list of subtab options appear. See the *Cloud Resource Options* table for more information.

Table 2: Cloud Resource Subtabs

| Subtab Name             | Description  |
|-------------------------|--|
| <b>Regions</b>          | Displays regions as rows in a summary table.   |
| <b>Virtual Networks</b> | Displays VNETs as rows in a summary table.   |
| <b>Routers</b>          | Displays routers as rows in a summary table.   |
| <b>Security Groups</b>  | Displays security groups as rows in a summary table.   |
| <b>Endpoints</b>        | Displays endpoints as rows in a summary table.   |
| <b>Virtual Machines</b> | Displays the VMs as rows in a summary table.   |
| <b>Cloud Services</b>   | <p>Contains the following subtabs:</p> <ul style="list-style-type: none"> <li>• <b>Cloud Service</b> Tab—Displays cloud services as rows in a summary table.</li> <li>• <b>Target Groups</b> Tab—Displays target groups as rows in a summary table.</li> </ul> |

**Step 2** Click the tab that represents the component with the details you want to view.

A summary table appears with items as rows in the table. For example, if you chose the **Endpoints** subtab, a list of endpoints appear as rows in a summary table.

You can filter the rows by selecting an attribute from the drop-down menu when you click the *Filter by attributes* bar. The attributes displayed in the drop-down menu depend on the selected subtab.

For the **Endpoints** subtab, you can narrow down the search based on a cloud tag, by entering a **key** or **value** term. If you want to search based on both terms, click the (+) displayed as a superscript to the **key** or **value** term (depending on which was entered first). Cloud tag filters cannot be edited. To modify a search, first delete the filters, and then enter the desired **key** or **value** term again. Search based on multiple cloud tag filters is supported.

**Step 3** To view a summary pane, click the row that represents the specific component you want to view.

**Step 4** For more information, double-click the summary table row that represents the specific component you want to view.

A new dialog box appears over the **work** pane with any of the following tabs:

**Note**

The tabs that appear differ between components and configurations.

- **Overview**—Provides a general overview of cloud resources, configuration relationships, and settings of the component. Beginning with Release 5.0(2), the cloud tags associated with endpoints are displayed.
- **Cloud Resources**—Contains a list of subtabs that display the cloud resource information related to the component.
- **Application Management**—Contains a list of subtabs that display the ACI relation information related to the component.
- **Statistics**—Enables you to view statistics based on a chosen sampling interval and statistics type. The **Statistics** tab may contain subtabs, depending on the component you are viewing.

- **Event Analytics**—Contains a list of subtabs that display faults, events, and audit logs.

---

## Viewing Operations Details

This section explains how to view operations details using the Cisco Cloud APIC GUI. The operations details include the information of a specific fault, event, audit log, active sessions, backup and restore policies, tech support policies, firmware management, scheduler policies, and remote locations.

### Procedure

---

**Step 1** From the **Navigation** menu, choose the **Operations** tab.

When the **Operations** tab expands, a list of subtab options appear. See the *Operations Options* table for more information.

**Table 3: Operations Subtabs**

| Subtab Name            | Description   |
|------------------------|---|
| <b>Event Analytics</b> | Contains the following subtabs: <ul style="list-style-type: none"><li>• <b>Faults</b> Tab—Displays faults as rows in a summary table.</li><li>• <b>Fault Records</b> Tab—Displays fault records as rows in a summary table.</li><li>• <b>Events</b> Tab—Displays events as rows in a summary table.</li><li>• <b>Audit Logs</b> Tab—Displays audit logs as rows in a summary table.</li></ul> |
| <b>Active Sessions</b> | Displays a list of active users who are logged into Cloud APIC.   |

| Subtab Name                 | Description  |
|-----------------------------|--|
| <b>Backup &amp; Restore</b> | <p>Contains the following subtabs:</p> <ul style="list-style-type: none"> <li>• <b>Backups</b> Tab—Displays backup as rows in a summary table.</li> <li>• <b>Backup Policies</b> Tab—Displays backup policies as rows in a summary table.</li> <li>• <b>Job Status</b> Tab—Displays the job status as rows in a summary table.</li> <li>• <b>Event Analytics</b> Tab—Contains the following subtabs: <ul style="list-style-type: none"> <li>• <b>Faults</b> Tab—Displays faults as rows in a summary table.</li> <li>• <b>Events</b> Tab—Displays events as rows in a summary table.</li> <li>• <b>Audit Logs</b> Tab—Displays audit logs as rows in a summary table.</li> </ul> </li> </ul> |
| <b>Tech Support</b>         | <p>Contains the following subtabs:</p> <ul style="list-style-type: none"> <li>• <b>Tech Support</b> Tab—Displays tech support policies as rows in a summary table.</li> <li>• <b>Core Logs</b> Tab—Displays core logs as rows in a summary table.</li> </ul>   |
| <b>Firmware Management</b>  | <p>Contains the following subtabs:</p> <ul style="list-style-type: none"> <li>• <b>General</b> Tab—Displays general firmware management information, such as Current Firmware Version, Upgrade Status.</li> <li>• <b>Images</b> Tab—Displays a list of images.</li> <li>• <b>Event Analytics</b> Tab—Contains the following subtabs: <ul style="list-style-type: none"> <li>• <b>Faults</b> Tab—Displays faults as rows in a summary table.</li> <li>• <b>Events</b> Tab—Displays events as rows in a summary table.</li> <li>• <b>Audit Logs</b> Tab—Displays audit logs as rows in a summary table.</li> </ul> </li> </ul>   |
| <b>Schedulers</b>           | Displays scheduler policies as rows in a summary table.  |
| <b>Remote Locations</b>     | Displays remote locations as rows in a summary table.  |

**Step 2** Click the tab that represents the component you want to view.



A summary table appears with items as rows in the table. For example, if you chose the **Active Sessions** subtab, a list of active sessions appear as rows in a summary table.

You can filter the rows by clicking the *Filter by Attributes* bar. Choose the attribute, operator and filter-value. For example, for filtering based on a username, choose username == user1 (where user1 is a user logged into Cloud APIC).

**Step 3** To view a summary pane, click the row that represents the specific component you want to view.

**Step 4** For more information, double-click the summary table row that represents the specific item you want to view.

A new dialog box appears over the **work** pane that displays additional information about the item you chose from the summary table.

## Viewing Infrastructure Details

This section explains how to view infrastructure details using the Cisco Cloud APIC GUI. The infrastructure details include information about system configuration, inter-region connectivity, and external connectivity.

### Procedure

**Step 1** From the **Navigation** menu, choose the **Infrastructure** tab.

When the **Infrastructure** tab expands, a list of subtab options appear. See the *Infrastructure Options* table for more information.

**Table 4: Infrastructure Subtabs**

| Subtab Name                      | Description  |
|----------------------------------|--|
| <b>System Configuration</b>      | Displays <b>General</b> system configuration information, <b>Management Access</b> information, <b>Controllers</b> , <b>Cloud Resource Naming Rules</b> , and <b>Event Analytics</b> . |
| <b>Inter-Region Connectivity</b> | Displays one pane with a map that contains the inter-region connectivity view and additional panes for each region.  |
| <b>Inter-Site Connectivity</b>   | Displays one pane with a map that contains the inter-site connectivity view and additional panes for each site.  |

**Step 2** Click the tab that represents the component with the details you want to view.

## Viewing Administrative Details

This section explains how to view administrative details using the Cisco Cloud APIC GUI. The administrative details include the information about authentication, security, users, and smart licensing..

## Procedure

**Step 1** From the **Navigation** menu, choose the **Administrative** tab.

When the **Administrative** tab expands, a list of subtab options appear. See the *Administrative Options* table for more information.

**Table 5: Administrative Subtabs**

| Subtab Name           | Description   |
|-----------------------|---|
| <b>Authentication</b> | <p>Displays the <b>Authentication Default Settings</b>, <b>Login Domains</b>, <b>Providers</b> and <b>Event Analytics</b> subtabs, which contain the information described below:</p> <ul style="list-style-type: none"> <li>• <b>Authentication Default Settings</b> Tab—Displays settings information.</li> <li>• <b>Login Domains</b> Tab—Displays the login domains as rows in a summary table.</li> <li>• <b>Providers</b> Tab—Displays the providers as rows in a summary table.</li> <li>• <b>Event Analytics</b> Tab—Displays the <b>Faults</b>, <b>Events</b>, and <b>Audit Logs</b> subtabs, each with the corresponding information displayed as rows in a summary table.</li> </ul>   |
| <b>Security</b>       | <p>Contains the following list of subtabs:</p> <ul style="list-style-type: none"> <li>• <b>Security Default Settings</b> Tab—Enables you to view the default security settings information.</li> <li>• <b>Security Domains</b> Tab—Enables you to view security domain information in a summary table.</li> <li>• <b>Roles</b> Tab—Enables you to view the role information in a summary table.</li> <li>• <b>RBAC Rules</b> Tab—Enables you to view RBAC rule information in a summary table.</li> <li>• <b>Certificate Authorities</b> Tab—Enables you to view the certificate authority information in a summary table.</li> <li>• <b>Key Rings</b> Tab—Enables you to view key ring information in a summary table.</li> <li>• <b>User Activity</b> Tab—Enables you to view user activity.</li> </ul> |

| Subtab Name            | Description  |
|------------------------|--|
| <b>Users</b>           | Contains the following subtabs: <ul style="list-style-type: none"> <li>• <b>Local</b> Tab—Displays local users as rows in a summary table.</li> <li>• <b>Remote</b> Tab—Displays remote users as rows in a summary table.</li> </ul>   |
| <b>Smart Licensing</b> | Contains the following subtabs: <ul style="list-style-type: none"> <li>• <b>General</b> Tab—Displays the licenses as rows in a summary table.</li> <li>• <b>CCRs</b> Tab—Displays CCRs as rows in a summary table.</li> <li>• <b>Faults</b> Tab—Displays faults as rows in a summary table.</li> </ul> |

**Step 2** Click the tab that represents the component you want to view.

For some options, a summary table appears with items as rows in the table (For example, if you choose the **Users** tab, a list of users appear as rows in a summary table). To view a summary pane, click the row that represents the specific component you want to view. To view more information, double-click the summary table row that represents the specific item you want to view. A new dialog box appears over the **work** pane that displays additional information about the item you chose from the summary table.

You can filter the rows by clicking the *Filter by Attributes* bar. Choose the attribute, operator and filter-value. For example, for filtering based on a user, choose User ID == admin (where admin is a user ID. ).

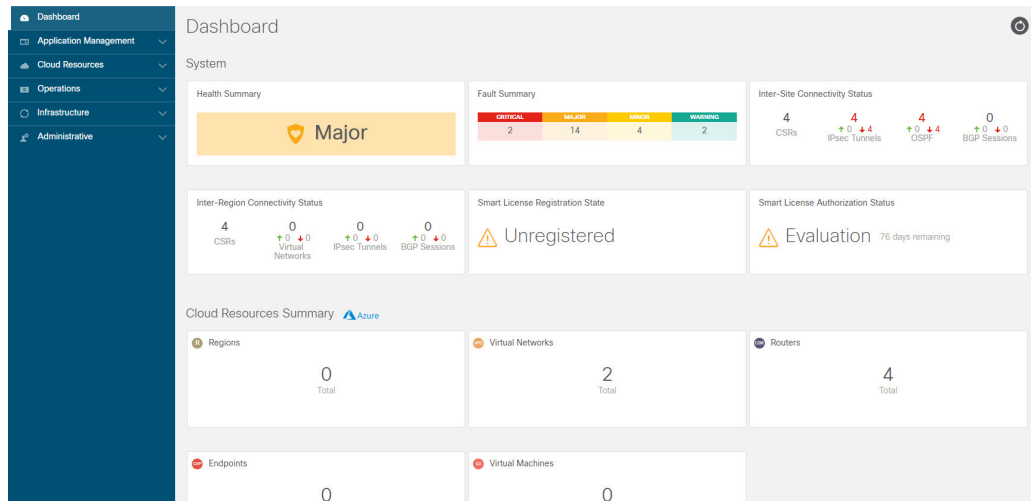
## Viewing Health Details Using the Cisco Cloud APIC GUI

This section explains how to view health details using the Cisco Cloud APIC GUI. You can view health details for any object that you can see in the Cloud Resources area in the Cisco Cloud APIC GUI, such as the following:

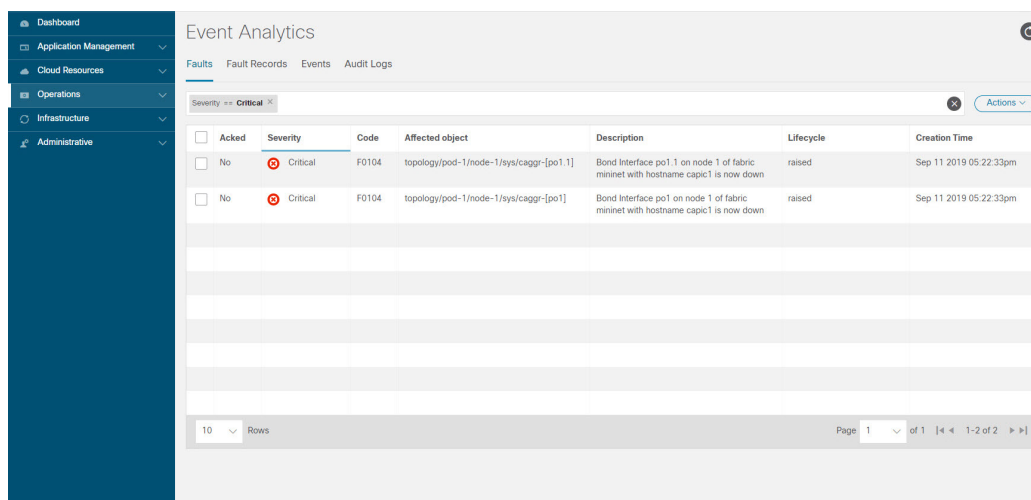
- Regions
- Availability Zones (for AWS cloud sites)
- VPCs (for AWS cloud sites)
- VNETs (for Azure cloud sites)
- Routers
- Security Groups
- Endpoints
- Instances

- ## Procedure

The **Dashboard** window for the Cisco Cloud APIC system appears. From this window, you can view the overall health status of your system.



The **Event Analytics** window appears, showing more detailed information for the specific fault level that you clicked. The following screen shows an example **Event Analytics** window for the faults listed with critical severity.



The information provided in the **Event Analytics** window changes to show the events with critical, major, and warning levels of severity.

Event Analytics

Filter by attributes

Actions

| Acked | Severity | Code  | Affected object  | Description   | Lifecycle | Creation Time          |
|-------|----------|-------|--|---|-----------|------------------------|
| No    | Critical | F0104 | topology/pod-1/node-1/sys/caggp-[pod1]   | Bond Interface po1.1 on node 1 of fabric mininet with hostname capc1 is now down  | raised    | Sep 11 2019 05:22:33pm |
| No    | Critical | F0104 | topology/pod-1/node-1/sys/caggp-[pod1]   | Bond Interface po1 on node 1 of fabric mininet with hostname capc1 is now down  | raised    | Sep 11 2019 05:22:33pm |
| No    | Major    | F3442 | acct-[infra]region-[eastus]/context-[overlay-1]-addr-[10.10.0.128/25]cos-[ct_routep_eastus_1_0]/instoper         | Operational State of the hcloudInstanceOper is down with [compute.VirtualMachineClientCreateOrUpdate: Failure sending request: StatusCode=404 -- Original Error: Code="ResourceGroupNotFound" Message="Resource group 'cAPIC-infra-mininet-fchazel-centralus' could not be found."] | raised    | Sep 11 2019 07:38:27pm |
| No    | Major    | F3442 | acct-[infra]region-[centralus]/context-[overlay-1]-addr-[10.10.0.0/25]cos-[ct_routep_centralus_1_0]/instoper     | Operational State of the hcloudInstanceOper is down with [compute.VirtualMachineClientCreateOrUpdate: Failure sending request: StatusCode=404 -- Original Error: Code="ResourceGroupNotFound" Message="Resource group 'cAPIC-infra-mininet-fchazel-centralus' could not be found."] | raised    | Sep 11 2019 07:38:27pm |
| No    | Major    | F3442 | acct-[infra]region-[eastus]/context-[overlay-1]-addr-[10.10.0.0/25]cos-[ct_routep_eastus_1_0]/instoper           | Operational State of the hcloudInstanceOper is down with [compute.VirtualMachineClientCreateOrUpdate: Failure sending request: StatusCode=404 -- Original Error: Code="ResourceGroupNotFound" Message="Resource group 'cAPIC-infra-mininet-fchazel-centralus' could not be found."] | raised    | Sep 11 2019 07:38:27pm |
| No    | Major    | F3442 | acct-[infra]region-[centralus]/context-[overlay-1]-addr-[10.10.0.0/25]cos-[ct_routep_centralus_1_0]/instoper     | Operational State of the hcloudInstanceOper is down with [compute.VirtualMachineClientCreateOrUpdate: Failure sending request: StatusCode=404 -- Original Error: Code="ResourceGroupNotFound" Message="Resource group 'cAPIC-infra-mininet-fchazel-centralus' could not be found."] | raised    | Sep 11 2019 07:45:10pm |
| No    | Major    | F3527 | acct-[infra]region-[eastus]/context-[overlay-1]-addr-[10.10.0.128/25]cos-[ct_routep_eastus_0_0]/license/oper     | Operational State of the HcpPlatformLicense is down with administrative-down  | raised    | Sep 11 2019 05:21:24pm |
| No    | Major    | F3527 | acct-[infra]region-[centralus]/context-[overlay-1]-addr-[10.10.0.0/25]cos-[ct_routep_centralus_1_0]/license/oper | Operational State of the HcpPlatformLicense is down with administrative-down  | raised    | Sep 11 2019 05:21:35pm |
| No    | Major    | F0101 | topology/pod-1/node-1/sys/chp-[dev/vdb]-f-[dev/vdb]  | Storage unit /dev/vdb on node 1 with hostname capc1 has failed.   | raised    | Sep 11 2019 05:22:33pm |
| No    | Major    | E0103 | topology/pod-1/node-1/sys/chp-[dev/vdb]-f-[dev/vdb]  | Storage unit /dev/vdb on node 1 with hostname capc1 has failed.   | raised    | Sep 11 2019 05:22:33pm |

**Step 4** From the **Navigation** menu, choose the **Cloud Resources** tab.

When the **Cloud Resources** tab expands, a list of subtab options appear. See the *Administrative Options* table for more information.

**Step 5** Choose any item under the **Cloud Resources** tab to display health information for that component.

For example, the following figure shows health information that might be displayed when you click on **Cloud Resources > Regions**, then you select a specific region.

Regions

Filter by attributes

| Name              | Admin State | Tenants | EPGs | AZs | Virtual Networks |
|-------------------|-------------|---------|------|-----|------------------|
| eastus            | managed     | N/A     | N/A  | N/A | N/A              |
| eastus2           | managed     | N/A     | N/A  | N/A | N/A              |
| westus            | managed     | N/A     | N/A  | N/A | N/A              |
| centralus         | managed     | N/A     | N/A  | N/A | N/A              |
| koreasouth        | unmanaged   | N/A     | N/A  | N/A | N/A              |
| francecentral     | unmanaged   | N/A     | N/A  | N/A | N/A              |
| eastasia          | unmanaged   | N/A     | N/A  | N/A | N/A              |
| canadewest        | unmanaged   | N/A     | N/A  | N/A | N/A              |
| brazilsouth       | unmanaged   | N/A     | N/A  | N/A | N/A              |
| australiaeast     | unmanaged   | N/A     | N/A  | N/A | N/A              |
| australiacentral2 | unmanaged   | N/A     | N/A  | N/A | N/A              |
| koreacentral      | unmanaged   | N/A     | N/A  | N/A | N/A              |
| ukwest            | unmanaged   | N/A     | N/A  | N/A | N/A              |
| southindia        | unmanaged   | N/A     | N/A  | N/A | N/A              |
| southeastasia     | unmanaged   | N/A     | N/A  | N/A | N/A              |

Cloud Provider's Region: eastus

0 CRITICAL 0 MAJOR 0 MINOR 0 WARNING

General

Region: region-eastus

Usage

0 Total

Settings

Admin State: Managed

Oper State: In use

Account: infra

Cloud Provider ID: ct\_chxprofile\_eastus

