



# Routed Connectivity to External Networks

---

This chapter contains the following sections:

- [About Routed Connectivity to Outside Networks, on page 1](#)
- [Create L3Out Wizard, on page 3](#)
- [Advertise Host Routes, on page 15](#)
- [Configuring Route Reflectors, on page 17](#)

## About Routed Connectivity to Outside Networks

A Layer 3 outside network configuration (L3Out) defines how traffic is forwarded outside of the fabric. Layer 3 is used to discover the addresses of other nodes, select routes, select quality of service, and forward the traffic that is entering, exiting, and transiting the fabric.



---

**Note** For guidelines and cautions for configuring and maintaining Layer 3 outside connections, see [Guidelines for Layer 3 Networking](#).

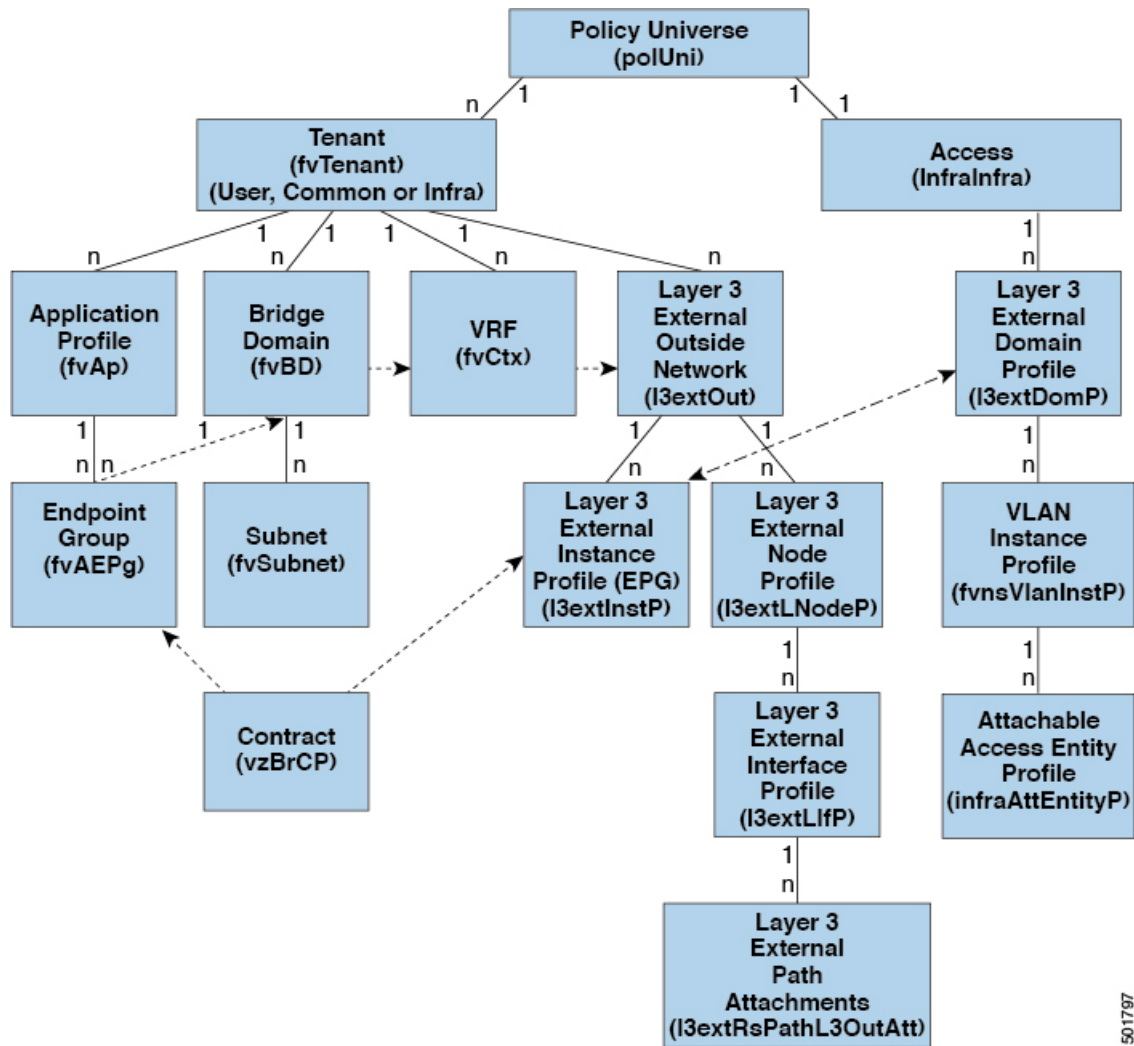
---

For information about the types of L3Outs, see [External Layer 3 Outside Connection Types](#).

## Layer 3 Out for Routed Connectivity to External Networks

Routed connectivity to external networks is enabled by associating a fabric access (`infraInfra`) external routed domain (`l3extDomP`) with a tenant Layer 3 external instance profile (`l3extInstP` or external EPG) of a Layer 3 external outside network (`l3extOut`), in the hierarchy in the following diagram:

Figure 1: Policy Model for Layer 3 External Connections



A Layer 3 external outside network (`l3extOut` object) includes the routing protocol options (BGP, OSPF, or EIGRP or supported combinations) and the switch-specific and interface-specific configurations. While the `l3extOut` contains the routing protocol (for example, OSPF with its related Virtual Routing and Forwarding (VRF) and area ID), the Layer 3 external interface profile contains the necessary OSPF interface details. Both are needed to enable OSPF.

The `l3extInstP` EPG exposes the external network to tenant EPGs through a contract. For example, a tenant EPG that contains a group of web servers could communicate through a contract with the `l3extInstP` EPG according to the network configuration contained in the `l3extOut`. The outside network configuration can easily be reused for multiple nodes by associating the nodes with the L3 external node profile. Multiple nodes that use the same profile can be configured for fail-over or load balancing. Also, a node can be added to multiple `l3extOuts` resulting in VRFs that are associated with the `l3extOuts` also being deployed on that node. For scalability information, refer to the current *Verified Scalability Guide for Cisco ACI*.

# Create L3Out Wizard

A new Create L3Out wizard is introduced in APIC release 4.2(1) that provides a straightforward walk-through for configuring an L3Out.

The Create L3Out wizard streamlines the process for configuring an L3Out, which defines how the ACI fabric connects to external layer 3 networks. With the Create L3Out wizard, you make the necessary basic configurations for the L3Out components in the following pages:

- **Identity page:** This page is used to configure the basic settings for the L3Out, as well as the static routing and dynamic routing protocols settings.
- **Nodes and Interfaces page:** This page is used to configure the node profiles and interface profiles for the Layer 3 and Layer 2 interface types.
- **Protocols page:** This page is used to configure specific polices based on the protocols that you selected in the Identity page.
- **External EPG page:** This page is used to configure the contract and subnets for the external EPG.

## Example L3Out Configuration

There are many different options available to you when configuring an L3Out using the **Create L3Out** wizard. Following is one example L3Out configuration, where you will configure an OSPF L3Out with two external routers, that will help you to understand the general configuration process.



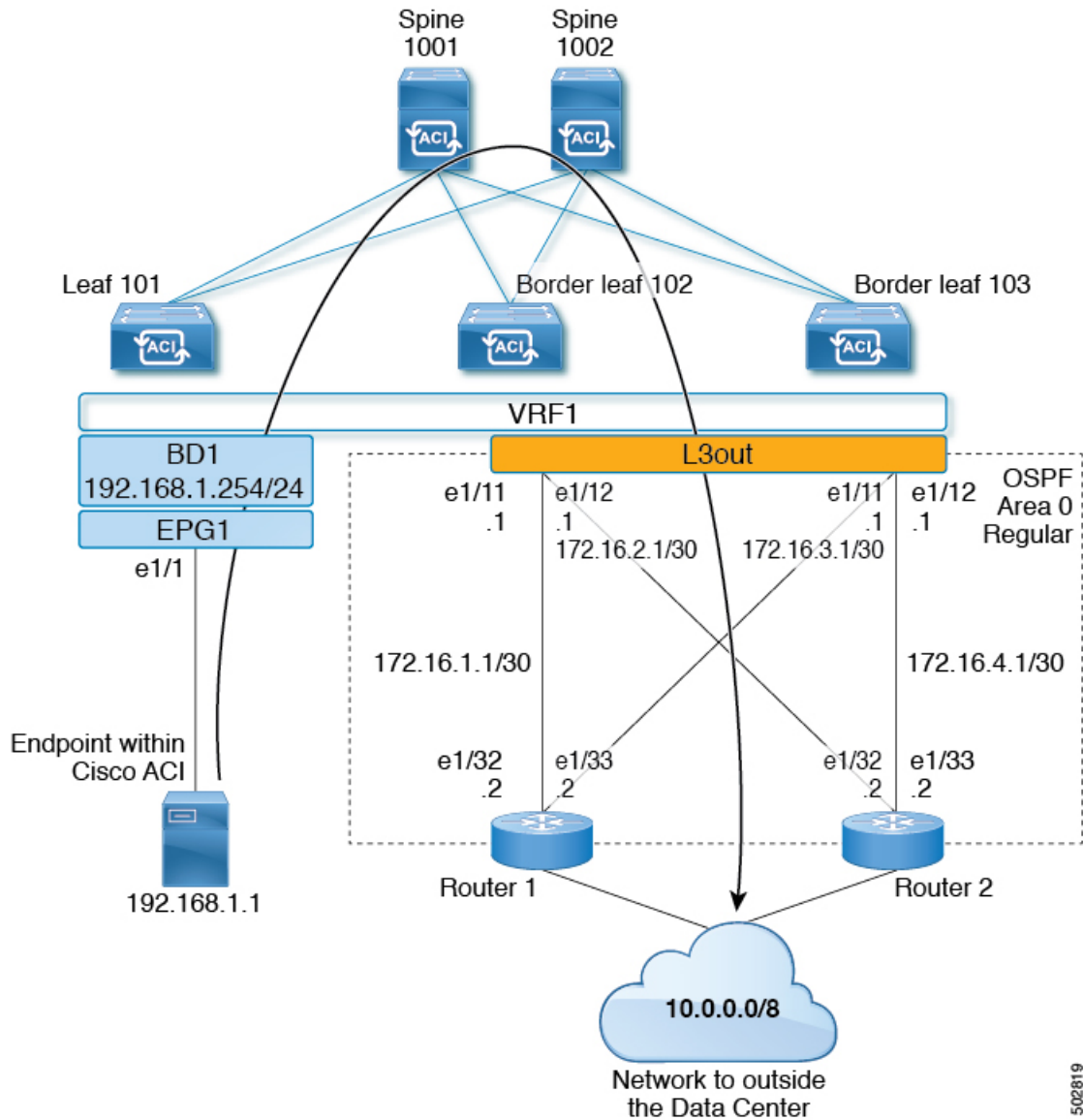
---

**Note** This example uses Cisco APIC release 4.2(x) and the associated GUI screens.

---

## Example Topology

Figure 2: Example Topology for an OSPF L3Out with Two External Routers



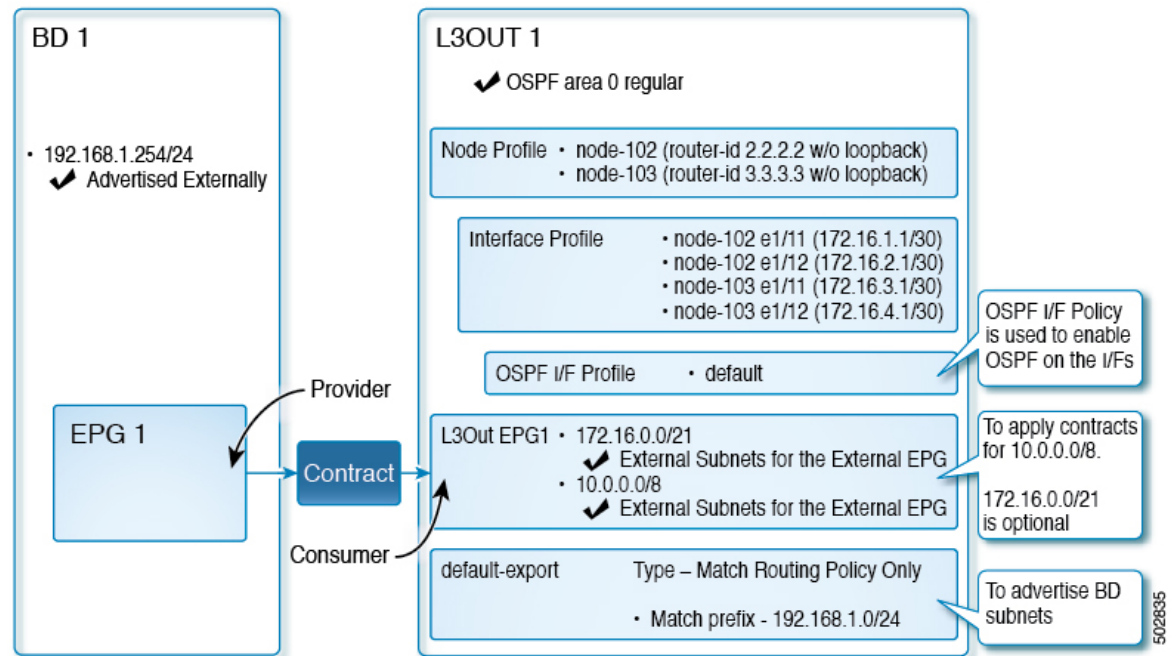
This basic L3Out example shows you how to:

- Configure an L3Out with the following specifications:
  - With Area 0 OSPF
  - With two external routers
  - With routed interfaces
  - On two border leaf switches
- Advertise a BD subnet using default route-map (default-export)

502819

- Allow communication with a contract between EPG1 and external route (10.0.0.0/8)

Figure 3: OSPF Configuration Diagram



The preceding diagram illustrates the configuration for the example topology in [Figure 2: Example Topology for an OSPF L3Out with Two External Routers, on page 4](#). The configuration flow for this example is as follows:

1. L3Out: This creates
  - L3Out itself (OSPF parameters)
  - Node, Interface, OSPF I/F Profiles
  - L3Out EPG with **External Subnets for the External EPG** scope
2. Advertise a BD subnet: This uses
  - **default-export** route-map
  - BD subnet with **Advertise Externally** scope
3. Allow EPG - L3Out communication: This uses a contract between EPG1 and L3Out EPG1

## Prerequisites

Figure 4: Example Screen of Objects Created as Prerequisites

Path	Primary VLAN for Micro-Seg	Port Encap (or Secondary VLAN for Micro-Seg)	Deployment Immediacy	Mode
<b>Node: Pod-1</b>				
Pod-1/Node-101...	unknown	vlan-10	Immediate	Trunk

IP Address: 192.168.1.254/24  
 Description: optional

Treat as virtual IP address:

Make this IP address primary:

Scope:  Advertised Externally  
 Shared between VRFs

Subnet Control:  No Default SVI Gateway  
 Querier IP

L3 Out for Route Profile: select a value

Route Profile: select a value

- This configuration example focuses only on the L3Out configuration part. The other configurations such as for VRF, BD, EPG, Application Profiles, and Access Policies (Layer 3 Domain etc.) are not covered. The preceding screenshot displays the prerequisite tenant configurations that are as follows:

- VRF1
- BD1 with the subnet 192.168.1.254/24
- EPG1 with a static port towards endpoints

## Create Example L3Out Using the Create L3Out Wizard

This task creates the OSPF L3Out described in Example Topology. Following this task, Cisco ACI will be configured with two border leaf switches and OSPF neighborhood with two external routers as shown in [Figure 2: Example Topology for an OSPF L3Out with Two External Routers, on page 4](#).

**Step 1** In the GUI **Navigation** pane, under the Tenant Example, navigate to **Networking > L3Outs**.

**Step 2** Right-click and choose **Create L3Out**.

**Step 3** In the **Create L3Out** screen, **Identity** tab, perform the following actions:

**Create L3Out**

1. Identity 2. Nodes And Interfaces 3. Protocols 4. External EPG

Leaf (L) --- Route --- Router (R)

**Identity**

A Layer 3 Outside (L3Out) network configuration defines how the ACI fabric connects to external layer 3 networks. The L3Out supports connecting to external networks using static routing and dynamic routing protocols (BGP, OSPF, and EIGRP).

**Prerequisites:**

- Configure an L3 Domain and Fabric Access Policies for interfaces used in the L3Out (AAEP, VLAN pool, Interface selectors).
- Configure a BGP Route Reflector Policy for the fabric infra MP-BGP.

Name:

VRF:

L3 Domain:

Use for GOLF:

BGP  EIGRP  OSPF

OSPF Area ID:

OSPF Area Control:  Send redistributed LSAs into NSSA area  Originate summary LSA  Suppress forwarding address in translated LSA

OSPF Area Type:  NSSA area  Regular area  Stub area

OSPF Area Cost:

Previous Cancel Next

- In the **Name** field, enter the name for an L3Out. (EXAMPLE\_L3Out1)
- In the **VRF** field and the **L3 Domain** field, choose the appropriate values. (VRF1, EXAMPLE\_L3DOM)
- In the **OSPF** field, check the checkbox.
- In the **OSPF Area ID** field, choose the value **0** or the text **backbone**.
- In the **OSPF Area Type** field, choose **Regular area**.
- Keep the rest of the fields with their default values.

**Step 4** Click **Next** to display the **Nodes and Interfaces** screen, and perform the following actions:

Create L3Out

- In the **Interface Types** area, in the **Layer 3** field and in the **Layer 2** field, ensure that your selections match the choices in the preceding screenshot (Routed and Port).
- In the **Nodes** area, in the **Node ID** field, from the drop-down list, choose the appropriate node ID. (leaf2 (Node 102))
- In the **Router ID** field, enter the appropriate router ID. (2.2.2.2)

The **Loopback Address** field auto populates based on the router ID value you enter. You do not require the loopback address, so delete the value and leave the field blank.

- In the **Interface** field, choose the interface ID. (eth1/11)
- In the **IP Address** field, enter the associated IP address. (172.16.1.1/30)
- In the **MTU** field, keep the default value. (inherit)
- Click the + icon next to the **MTU** field to add an additional interface for node leaf2. (Node-102)
- In the **Interface** field, choose the interface ID. (eth1/12)
- In the **IP Address** field, enter the associated IP address. (172.16.2.1/30)
- In the **MTU** field, keep the default value. (inherit)

**Step 5** To add another node, click the + icon next to the **Loopback Address** field, and perform the following actions:

**Note** When you click the + icon, the new **Nodes** area is displayed below the area that you had populated earlier.



- a) In the **Nodes** area, in the **Node ID** field, from the drop-down list, choose the node ID. (leaf3 (Node-103))
- b) In the **Router ID** field, enter the router ID. (3.3.3.3)

The **Loopback Address** field auto populates based on the router ID value you enter. You do not require the loopback address, so delete the value and leave the field blank.

- c) In the **Interface** field, choose the interface ID. (eth1/11)
- d) In the **IP Address** field, enter the IP address. (172.16.3.1/30)
- e) In the **MTU** field, keep the default value. (inherit)
- f) Click the + icon next to the **MTU** field to add an additional interface for node leaf3. (Node-103)
- g) In the **Interface** field, choose the interface ID. (eth1/12)
- h) In the **IP Address** field, enter the associated IP address. (172.16.4.1/30)
- i) In the **MTU** field, keep the default value. (inherit), and click **Next**.

We have specified the node, interface, and IP address for each interface.

### Step 6

Click **Next** to view the **Protocols** screen.

This screen allows you to specify the OSPF interface level policy to configure hello-interval, network-type, etc.

Create L3Out ? X

1. Identity   2. Nodes And Interfaces   **3. Protocols**   4. External EPG

Protocol Associations

OSPF

Node ID: 102		Hide Policy <input type="checkbox"/>
Interface	Policy	
1/11,1/12	select a value	

Node ID: 103		Hide Policy <input type="checkbox"/>
Interface	Policy	
1/11,1/12	select a value	

In this example, nothing is selected. Therefore, the default policy is used. The default OSPF interface profile uses **Unspecified** as network-type which defaults to broadcast network type. To optimize this with point-to-point network-type for sub-interface, see **Change the OSPF Interface Level Parameters (Optional)**.

### Step 7

Click **Next**.

The **External EPG** screen is displayed with L3Out EPG details. This configuration is to classify the traffic into the EPG to apply to the contract.

**Step 8** In the **External EPG** screen, perform the following actions:

Create L3Out

- In the **External EPG** area, **Name** field, enter a name for the external EPG. (L3Out\_EPG1)
- In the **Provided Contract** field, do not choose a value.

In this example, there is no provided contract for L3Out\_EPG1 because a normal EPG (EPG1) is the provider.

- In the **Consumed Contract** field, choose **default** from the drop-down list.

**Step 9** In the **Default EPG for all external networks** field, uncheck the checkbox, and perform the following actions:

- Click the + icon in the **Subnets** area, to display the **Create Subnet** dialog box.
- In the **IP Address** field, enter the subnet. (10.0.0.0/8)
- In the **External EPG Classification** field, check the checkbox for **External Subnets for the External EPG**. Click **OK**.

**Step 10** Click the + icon in the **Subnets** area once more to display the **Create Subnet** dialog box, and perform the following actions:

**Note** Although this is an optional configuration, it is a best practice to specify the L3Out interface subnets in case endpoints have to communicate with those IPs.

- In the **IP Address** field, enter the subnet. (172.16.0.0/21)

This subnet covers all the interfaces in the L3Out. This can be each individual subnet for each routed interface instead.

- In the **External EPG Classification** field, check the checkbox for **External Subnets for the External EPG**. Click **OK**.
- Click **Finish**.

---

The L3Out OSPF is now deployed.

## Review - Create Example L3Out Using the Create L3Out Wizard

Review how the configuration using the wizard is presented in the Cisco APIC GUI, and verify that the configurations are accurate.

**Step 1** Navigate to your **Tenant\_name > Networking > L3Outs > EXAMPLE\_L3Out1**, in the **Work** pane, scroll to view the details as follows:

At this location in the GUI, verify the main L3Out parameters such as VRF, domain, and OSPF parameters that are configured in the **Identity** screen in the **Create L3Out** wizard.

The screenshot displays the configuration for **EXAMPLE\_L3Out1**. The configuration is as follows:

- VRF:** VRF1
- Resolved VRF:** Example/VRF1
- L3 Domain:** EXAMPLE\_L3\_DOM
- Route Profile for Interleak:** select a value
- Enable BGP/EIGRP/OSPF:**  BGP,  OSPF,  EIGRP
- OSPF Area ID:** 0
- OSPF Area Control:**  Send redistributed LSAs into NSSA area,  Originate summary LSA,  Suppress forwarding address in translated LSA
- OSPF Area Type:** NSSA area (selected), Regular area, Stub area
- OSPF Area Cost:** 1

**Nodes:**

Node ID	Router ID	Loopback Address
topology/pod-1/node-102	2.2.2.2	
topology/pod-1/node-103	3.3.3.3	

**Routed Interfaces:**

Path	IP Address	Secondary IP Address	MAC Address	MTU (bytes)
Pod-1/Node-102/eth1/11	172.16.1.1/30		00:22:BD:F8:19:FF	inherit
Pod-1/Node-102/eth1/12	172.16.2.1/30		00:22:BD:F8:19:FF	inherit
Pod-1/Node-103/eth1/11	172.16.3.1/30		00:22:BD:F8:19:FF	inherit
Pod-1/Node-103/eth1/12	172.16.4.1/30		00:22:BD:F8:19:FF	inherit

**Step 2** Verify that OSPF is enabled with the specified parameters such as Area ID and Area Type.

**Step 3** Under **Logical Node Profiles**, *EXAMPLE\_L3Out1\_nodeProfile* is created to specify border leaf switches with their router IDs.

**Step 4** Under **Logical Interface Profile**, *EXAMPLE\_L3Out1\_interfaceProfile* is created.

Verify the interface parameters such as interface ID, IP addresses, in this example, as routed interfaces. The default MAC addresses gets auto populated. OSPF interface profile is also created under this for OSPF interface level parameters.

The review is complete.

## Configure Advertise the BD Subnet with a Route Map

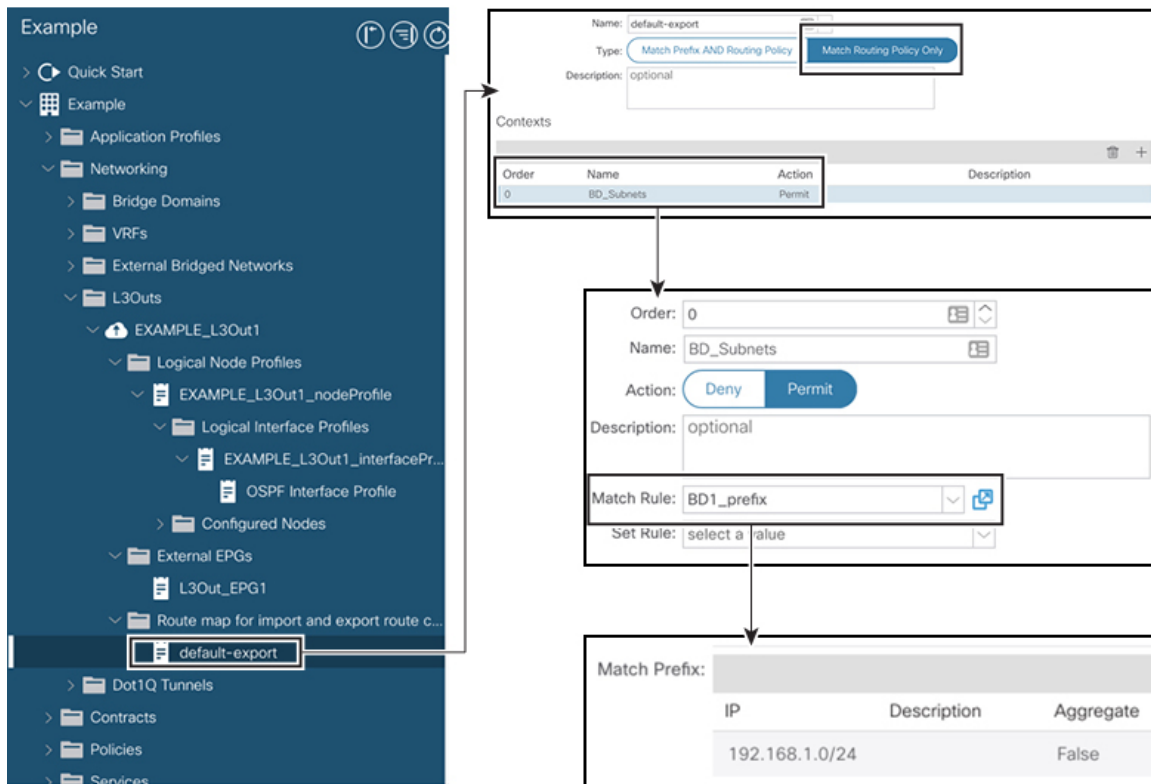
In this example, a route map, **default-export**, is used with the IP prefix list to advertise the BD subnet.



**Note** This **default-export** route map will be applied to the L3Out (EXAMPLE\_L3Out1) without being associated to anything specific.

**Step 1** To enable a BD subnet to be advertised, navigate to **Tenant > Networks > Bridge Domains > BDI > Subnets > 192.168.1.254/24**, and select **Advertised Externally** scope.

**Step 2** To create a route map under your L3Out (EXAMPLE\_L3Out1), navigate to **Route map for import and export route control**.



**Step 3** Right-click and choose **Create Route map for import and export route control**.

**Step 4** In the **Create Route map for import and export route control** dialog box, in the **Name** field, choose **default-export**.

**Step 5** In the **Type** field, choose **Matching Route Policy Only**.

**Note** **Match Routing Policy Only:** By choosing this **Type** with default-export route map, all route advertisement configuration is performed by this route map. BD associations and export route control subnets configured under the external EPG will not apply. You should configure all match rules within this route-map for all routes that will be advertised from this L3Out.

**Match Prefix and Routing Policy:** By choosing this **Type** with default-export route map, route advertisement is matched by any match rules configured in this route map **in addition to** any BD to L3Out associations and export route control subnets defined under the External EPG.

When using a route profile, it is recommended to use **Match Routing Policy Only** for a simpler configuration that is easier to maintain.

**Step 6** In the **Contexts** area, click the + icon, to display the **Create Route Control Context** dialog box, and perform the following actions:

a) In the **Order** field, configure the order. (0)

In this example, we have only one order.

b) In the **Name** field, enter a name for the context. (BD\_Subnets)

c) In the **Action** field, choose **Permit**.

This enables the route map to permit the prefix we will configure.

## Verify the Contract

In this example, we require the match rule that requires the IP prefix list, **BD1\_prefix**. This IP prefix list points to the BD subnet advertised.

- Step 7** In the **Match Rule** field, create the IP prefix-list by performing the following actions;
- Choose **Create Match Rule for a Route-Map**.
  - In the **Name** field, enter a name *BD1\_prefix*.
  - In the **Match Prefix** area, click the + icon, and enter the BD subnet (192.168.1.0/24).

## Verify the Contract

In this task, you verify the contract to enable communication between an endpoint (192.168.1.1) and external prefixes (10.0.0.0/8, and optionally 172.16.0.0/21). In this example, the EPG for the endpoint is EPG1 and the external EPG for external prefixes is L3Out\_EPG1.

The required configuration should already be present from the **Create L3Out** wizard.

- Step 1** Under your L3Out, navigate to **External EPGs > L3Out\_EPG1**.

Name	Tenant	Type	QoS Class	State
default	common	Contract	Unspecified	formed

- Step 2** In the **Work** pane, in the **External EPG Instance Profile** area, under **Policy > General** sub-tab, look at the Properties and verify that the two subnets are displayed with **External Subnets for the External EPG**.

- Step 3** Next, click the **Contracts** sub-tab and verify the contract you specified earlier is consumed correctly. In case you want to add more contracts, you can perform the actions from this location in GUI.

- Step 4** Navigate to **Application Profile > Application EPGs > EPG1 > Contracts**, and verify that EPG1 is providing the appropriate contract.

## Change the OSPF Interface Level Parameters (Optional)

If you wish to change the OSPF interface-level parameters, such as **Hello Interval**, **OSPF network type**, then you can configure it in the OSPF Interface Profile. The node level OSPF parameters are already configured.

- Step 1** Under your L3Out, navigate to **Logical Interface Profile > EXAMPLE\_L3Out1\_interfaceProfile > OSPF Interface Profile**.

The screenshot shows the configuration interface for the OSPF Interface Profile. On the left is a navigation tree with the following structure:

- Example
  - Quick Start
  - Example
    - Application Profiles
    - Networking
      - Bridge Domains
      - VRFs
      - External Bridged Networks
      - L3Outs
        - EXAMPLE\_L3Out1
          - Logical Node Profiles
            - EXAMPLE\_L3Out1\_nodeProfile
              - Logical Interface Profiles
                - EXAMPLE\_L3Out1\_interfaceProfile
                  - OSPF Interface Profile (highlighted)
                - Configured Nodes
              - External EPGs
                - L3Out\_EPG1
              - Route map for import and export route cont...
                - default-export
            - Dot1Q Tunnels
            - Contracts
            - Policies
            - Services

The main configuration area is divided into two sections:

- General Information:**
  - Name: (empty)
  - Description: optional
  - Authentication Key: (password field)
  - Confirm Authentication Key: (password field)
  - Authentication Key ID: 1
  - Authentication Type: MD5 authentication (selected), No authentication, Simple authentication
  - Associated OSPF Interface Policy Name: point-to-point
- OSPF Parameters:**
  - Network Type: Broadcast, Point-to-point (selected), Unspecified
  - Priority: 1
  - Cost of Interface: unspecified
  - Interface Controls:
    - Advertise subnet
    - BFD
    - MTU ignore
    - Passive participation
  - Hello Interval (sec): 10
  - Dead Interval (sec): 40
  - Retransmit Interval (sec): 5
  - Transmit Delay (sec): 1

- Step 2** In the **Work** pane, in the **Properties** area, choose the OSPF Interface Policy you wish to use.

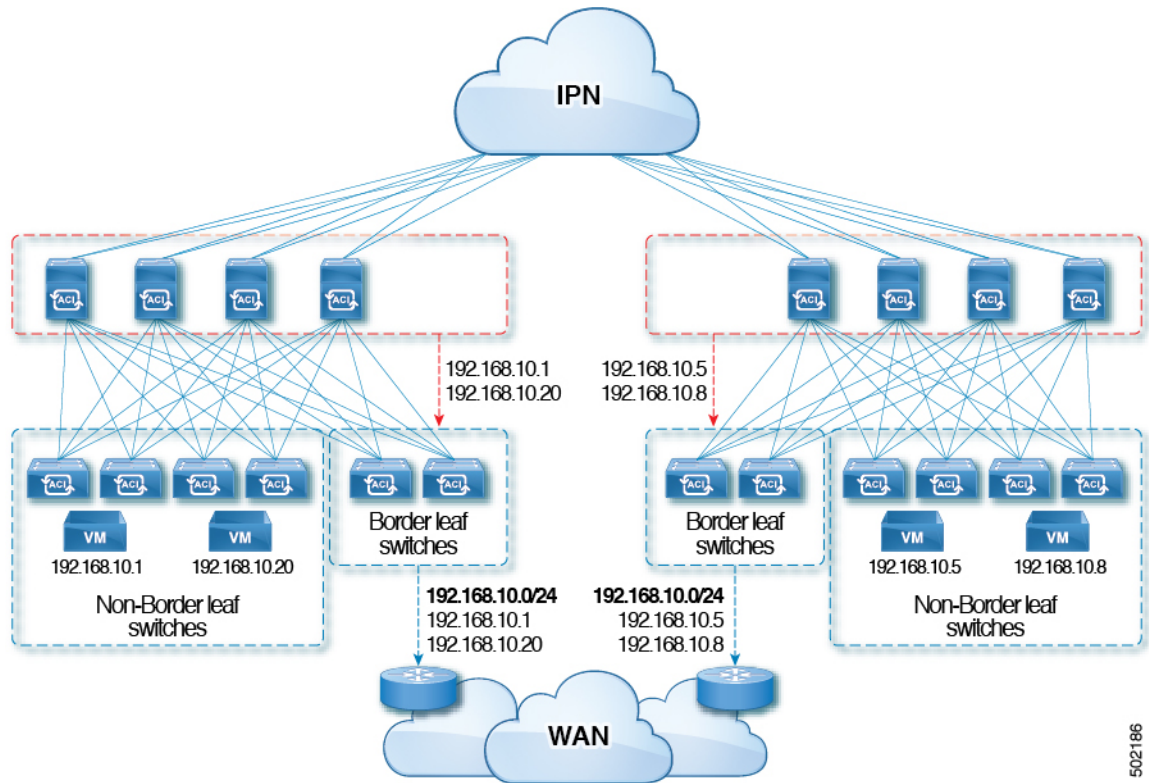
This modifies your OSPF interface level parameters.

## Advertise Host Routes

Enabling Advertise Host Routes on the BD, individual host-routes (/32 and /128 prefixes) are advertised from the Border-Leaf switches (BL). The BD must be associated to the L3out or an explicit prefix list matching the host routes. The host routes must be configured to advertise host routes out of the fabric.

Border-Leaf switches along with the subnet advertise the individual end-point(EP) prefixes. The route information is advertised only if the host is connected to the local POD. If the EP is moved away from the

local POD or once the EP is removed from EP database (even if the EP is attached to a remote leaf), the route advertisement is then withdrawn.



502186

Advertise Host Route configuration guidelines and limitations are:

- When host routes are advertised, the VRF Transit Route Tag is set in order to prevent them from being advertised back into the fabric and installed. In order for this loop protection to work properly, external routers must preserve this route-tag if advertising to another L3Out.
- If a bridge domain is tied to an EPG that has the same subnet configured for internal leaking, you must also enable the "Advertised Externally" flag on the EPG subnet.
- The Advertise Host Routes feature is supported on Generation 2 switches or later (Cisco Nexus N9K switches with "EX", "FX", or "FX2" on the end of the switch model name or later; for example, N9K-93108TC-EX).
- Host route advertisement supports both BD to L3out Association and the explicit route map configurations. We recommend using explicit route map configuration which allows you greater control in selecting individual or a range of host routes to configure.
- EPs/Host routes in SITE-1 will not be advertised out through Border Leafs in other SITES.
- When EPs is aged out or removed from the database, Host routes are withdrawn from the Border Leaf.
- When EP is moved across SITES or PODs, Host routes should be withdrawn from first SITE/POD and advertised in new POD/SITE.
- EPs learned on a specific BD, under any of the BD subnets are advertised from the L3out on the border leaf in the same POD.



- EPs are advertised out as Host Routes only in the local POD through the Border Leaf.
- Host routes are not advertised out from one POD to another POD.
- In the case of Remote Leaf, if EPs are locally learned in the Remote Leaf, they are then advertised only through a L3out deployed in Remote Leaf switches in same POD.
- EPs/Host routes in a Remote Leaf are not advertised out through Border Leaf switches in main POD or another POD.
- EPs/Host routes in the main POD are not advertised through L3out in Remote Leaf switches of same POD or another POD.
- The BD subnet must have the **Advertise Externally** option enabled.
- The BD must be associated to an L3out or the L3out must have explicit route-map configured matching BD subnets.
- There must be a contract between the EPG in the specified BD and the External EPG for the L3out.



---

**Note** If there is no contract between the BD/EPG and the External EPG the BD subnet and host routes will not be installed on the border leaf.

---

- Advertise Host Route is supported for shared services. For example: epg1/BD1 deployed is in VRF-1 and L3out in another VRF-2. By providing shared contract between EPG and L3out host routes are pulled from one VRF-1 to another VRF-2.
- When Advertise Host Route is enabled on BD custom tag cannot be set on BD Subnet using route-map.
- When Advertise Host Route is enabled on a BD and the BD is associated with an L3Out, BD subnet is marked public. If there's a rogue EP present under the BD, that EP is advertised out on L3Out.

## Configuring Route Reflectors

ACI fabric route reflectors use multiprotocol BGP (MP-BGP) to distribute external routes within the fabric. To enable route reflectors in the ACI fabric, the fabric administrator must select the spine switches that will be the route reflectors, and provide the autonomous system (AS) number. It is recommended to configure at least two spine nodes per pod as MP-BGP route reflectors for redundancy.

After route reflectors are enabled in the ACI fabric, administrators can configure connectivity to external networks through leaf nodes using a component called Layer 3 Out (L3Out). A leaf node configured with an L3Out is called a border leaf. The border leaf exchanges routes with a connected external device via a routing protocol specified in the L3Out. You can also configure static routes via L3Outs.

After both L3Outs and spine route reflectors are deployed, border leaf nodes learn external routes via L3Outs, and those external routes are distributed to all leaf nodes in the fabric via spine MP-BGP route reflectors.

Check the *Verified Scalability Guide for Cisco APIC* for your release to find the maximum number of routes supported by a leaf.

## Configuring an MP-BGP Route Reflector Using the GUI

- 
- Step 1** On the menu bar, choose **System > System Settings**.
- Step 2** In the **Navigation** pane, right-click **BGP Route Reflector**, and click **Create Route Reflector Node**.
- Step 3** In the **Create Route Reflector Node** dialog box, from the **Spine Node** drop-down list, choose the appropriate spine node. Click **Submit**.
- Note** Repeat the above steps to add additional spine nodes as required.
- The spine switch is marked as the route reflector node.
- Step 4** In the **BGP Route Reflector** properties area, in the **Autonomous System Number** field, choose the appropriate number. Click **Submit**.
- Note** The autonomous system number must match the leaf connected router configuration if Border Gateway Protocol (BGP) is configured on the router. If you are using routes learned using static or Open Shortest Path First (OSPF), the autonomous system number value can be any valid value.
- Step 5** On the menu bar, choose **Fabric > Fabric Policies > Pods > Policy Groups**.
- Step 6** In the **Navigation** pane, expand and right-click **Policy Groups**, and click **Create Pod Policy Group**.
- Step 7** In the **Create Pod Policy Group** dialog box, in the **Name** field, enter the name of a pod policy group.
- Step 8** In the **BGP Route Reflector Policy** drop-down list, choose the appropriate policy (default). Click **Submit**. The BGP route reflector policy is associated with the route reflector pod policy group, and the BGP process is enabled on the leaf switches.
- Step 9** On the menu bar, choose **Fabric > Fabric Policies > Profiles > Pod Profile default > default**.
- Step 10** In the **Work** pane, from the **Fabric Policy Group** drop-down list, choose the pod policy that was created earlier. Click **Submit**. The pod policy group is now applied to the fabric policy group.
- 

## Verifying the MP-BGP Route Reflector Configuration

- 
- Step 1** Verify the configuration by performing the following actions:
- Use secure shell (SSH) to log in as an administrator to each leaf switch as required.
  - Enter the **show processes | grep bgp** command to verify the state is S.
 

If the state is NR (not running), the configuration was not successful.
- Step 2** Verify that the autonomous system number is configured in the spine switches by performing the following actions:
- Use the SSH to log in as an administrator to each spine switch as required.
  - Execute the following commands from the shell window
- Example:**
- ```
cd /mit/sys/bgp/inst
```
- Example:**
- ```
grep asn summary
```

The configured autonomous system number must be displayed. If the autonomous system number value displays as 0, the configuration was not successful.

---

