



Manage and Customize Dashboards

This chapter explains how dashboards and dashlets provide customizable monitoring views in Crosswork Network Controller. It includes tasks for creating dashboards, editing dashboard and dashlet settings, managing saved views, filtering dashboard data, removing dashlets, and deleting custom dashboards.

- [Manage and Customize Dashboards, on page 1](#)
- [Dashboard customization tasks, on page 2](#)

Manage and Customize Dashboards

A dashboard is a centralized interface that displays metrics and trends through interactive components called dashlets.

Dashboards appear as individual tabs, allowing you to monitor and compare different sets of data in a single view.

Dashboards help you monitor and analyze performance across various policies by highlighting the most relevant metrics. Crosswork Network Controller provides a set of default dashboards, which you can personalize by adding or customizing dashlets to meet your specific monitoring needs.

The data displayed in each dashlet is polled based on the configured policies. Some dashlets allow you to edit the metrics to customize the displayed data. For information on the policies, refer to the *Monitor device and inventory health* chapter in the *Cisco Crosswork Network Controller 7.2 Device Lifecycle Management* guide.

Dashboard customizations

The dashboard framework includes customization options to help you tailor dashboards to your specific needs:

- Multiple dashboard tabs per user: Create and manage several dashboards to monitor different data views or operational areas.
- Dashboard actions: Add, copy, rename, or delete dashboards as needed to stay organized and focused on your goals.
- Dashlet actions: Add, edit, copy, and delete dashlets to control how information is displayed and shared.
- Dashboard-level filters: Apply filters across the dashboard to view device group or port-based data.
- Save and load views: Capture customized dashboard layouts and reload them as needed, so you can quickly switch between different monitoring scenarios.

These capabilities help you create a flexible, data-driven workspace that evolves with your business needs.

Dashboard customization tasks

Refer to this topic to choose the dashboard customization task that matches the action you need to perform.

Dashboard task list

Dashboards in Crosswork Network Controller provide a centralized, customizable view of key metrics through interactive dashlets.

Use these topics to create, customize, and manage dashboards:

- [Create a dashboard](#)
- [Edit a dashboard](#)
- [Manage the dashboard views](#)
- [Filter data in a dashboard](#)
- [Remove a dashlet](#)
- [Delete a dashboard](#)

Create a dashboard

You can create multiple dashboards. Each dashboard is represented as a separate tab. Crosswork Network Controller includes a default dashboard tab named **General**, which you cannot rename, delete, or filter.

Follow these steps to create a custom dashboard and add relevant dashlets:

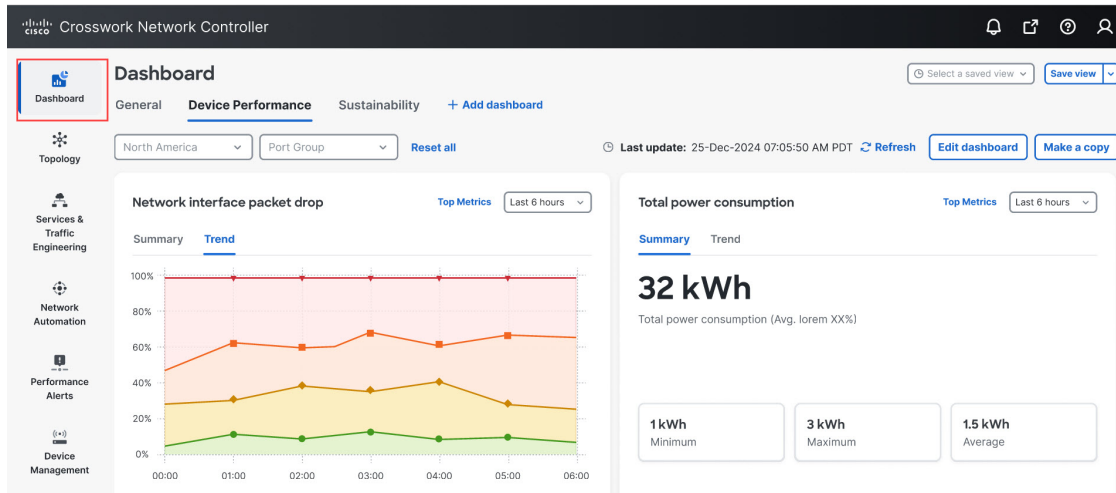
Before you begin

Ensure that you have configured the policies that you want to monitor. For information on the policies, refer to the [Monitor device and inventory health](#) chapter in [Cisco Crosswork Network Controller 7.2 Device Lifecycle Management](#).

Procedure

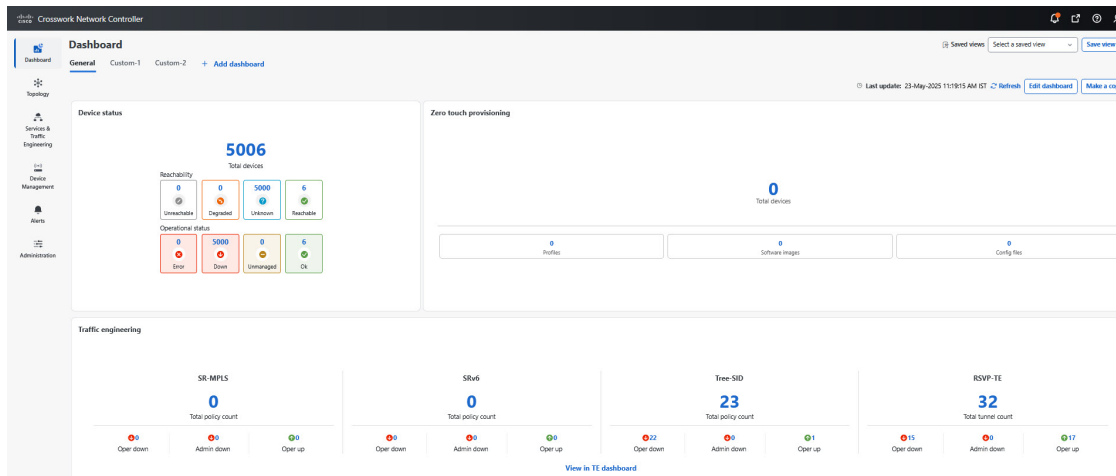
Step 1 From the Crosswork Network Controller main menu, choose **Dashboard**.

Figure 1: Dashboard



The **Dashboard** page opens with the default **General** tab.

Figure 2: Dashboard - General tab



Step 2 Click + **Add Dashboard** to create a new dashboard tab.

Step 3 Click the edit icon next to the default title, and enter a meaningful name for the dashboard.

Step 4 Add dashlets.

- a) Click **+Add dashlet**.
- b) In the **Add Dashlets** drawer, select the policy and the corresponding metrics you want to monitor.

Note

If you choose to add the Top 5 metrics in the **Interface health** dashlets, you must create an Interface health monitoring policy by using either device groups or port groups. You can create one or multiple of these groups. If you configure the Interface health policy using individual devices, rather than device or port groups, the data will not appear in the **Dashboards**. However, the data will still be accessible on the **Device Management > Top Metrics** UI page.

c) Click **+Add**.

The selected dashlets are added to the dashboard.

- d) Enter a unique, meaningful title for each dashlet.
- e) Click the ellipsis icon on a dashlet to configure the chart type, copy the dashlet, or delete the dashlet.
 - Configure the chart type as **Bar**, **Donut**, or **Pie**.
 - Copy or delete the dashlet.

Step 5 Click **Save**.

The selected dashlets appear on the dashboard.

What to do next

To view relevant data on the dashlets, apply the appropriate device or port group filters. Then, select the time range for which you want to view the data, such as 6 hours, 1 day, or 1 month.

Edit a dashboard

You can modify a custom dashboard by renaming it, adding or removing dashlets, changing chart types, and editing the dashlet metrics.

Follow these steps to modify a dashboard and the relevant dashlets:

Before you begin

- Identify the dashboard tab that you want to modify and confirm that it is not the default dashboard, which cannot be edited.
- Review the existing dashlets to determine which elements, such as titles, metrics, or chart types, you want to update.

Procedure

Step 1 From the Crosswork Network Controller main menu, choose **Dashboard**.

The **Dashboard** page opens with the configured dashboards as individual tabs.

Step 2 Select the dashboard tab that you want to edit.

Step 3 Click **Edit dashboard**.

Step 4 Modify the required parameters.

- Dashboard title: Click the edit icon next to the dashboard title and enter a meaningful name.
- Dashlet title: Click the title field within a dashlet and enter a descriptive name.
- Chart type: Click the ellipsis icon on a dashlet, select **Change chart type**, and choose **Bar**, **Donut**, or **Pie**.
- Copy dashlet: Click the ellipsis icon and select **Copy**. A duplicate dashlet appears after the last dashlet in the dashboard.

- Delete dashlet: Click the ellipsis icon and select **Delete** to remove the dashlet from the dashboard.
- Modify metrics: Click **Edit metrics** to adjust or reset the metric range.

Note

This option is available only for certain dashlets, such as Link metrics.

Step 5 Click **Save**.

Manage the dashboard views

You can save a dashboard view as a snapshot and reuse it to quickly access a specific configuration of dashlets, filters, and layout. You can share saved views with others or revisit them for common monitoring setups.

Follow these steps to manage dashboard views:

Before you begin

If you want to rename or manage the existing views, verify that a view has been previously saved.

Procedure

- Step 1** From the Crosswork Network Controller main menu, choose **Dashboard**.
The **Dashboard** page opens with the configured dashboards displayed as individual tabs.
- Step 2** Select the dashboard tab for which you want to manage views.
- Step 3** In the dashboard toolbar, click the views drop-down and perform any of these actions:
- a) **Save view as**: Save the current dashboard layout and filters with a unique name.
 - b) **Rename view**: Update the name of an existing saved view.
 - c) **Manage views**: View and manage all saved views.
 - Sort views by **Recently added**, **Most viewed**, or **Recently visited**.
 - Delete any view that is no longer needed.
-

Filter data in a dashboard

You can filter the data visualizations in a dashboard using the drop-downs, which let you focus on the displayed metrics based on selected device groups or port groups.

**Note**

- You can filter data only in the custom dashboard. You cannot filter data in the **General** dashboard.
- You can apply only one filter at a time. For example, if you filter data using a device group, the dashboard displays results for that group. Later, if you filter by port group, it overrides the previous filter and displays data based only on the selected port group.

Follow these steps to filter data in a dashboard:

Procedure

-
- Step 1** From the Crosswork Network Controller main menu, choose **Dashboard**.
The **Dashboard** page opens with the configured dashboards as individual tabs.
- Step 2** Select the dashboard tab where you want to apply filters.
- Step 3** In the dashboard view, use one of the relevant filter options:
- Device group: Click the **Device group** drop-down and select the desired group.
 - Port group: Click the **Port group** drop-down and select the relevant port group.
- Step 4** To sort data by time range, click the range drop-down and select a duration. For example, 6 hours, 1 day, 1 week, or 1 month.
-

Remove a dashlet

You can remove dashlets from a dashboard and add them again at any time.

Follow these steps to delete a dashlet from the custom dashboard:

Before you begin

Review the contents to confirm that no critical dashlets are in use.

Procedure

-
- Step 1** From the Crosswork Network Controller main menu, choose **Dashboard**.
The **Dashboard** page opens with the configured dashboards as individual tabs.
- Step 2** Select the dashboard tab from which you want to delete the dashlet.
- Step 3** Click **Edit dashboard**.
- Step 4** In the dashlet that you want to delete, click the ellipsis icon and select **Delete**.
The dashlet is removed from the dashboard.

- Step 5** When the confirmation message appears for the last dashlet, review the details carefully, then click **Delete** to permanently remove the dashlet.
-

Delete a dashboard

Follow these steps to delete a custom dashboard and the relevant dashlets:

Before you begin

- Document any important configurations or metrics before deleting.
- Review the dashboard contents to confirm that no critical dashlets or data views are in use.
- You cannot delete or modify the **General** dashboard. It contains system-generated dashlets related to the configured policies.

Procedure

- Step 1** From the Crosswork Network Controller main menu, choose **Dashboard**.
The **Dashboard** page opens with the configured dashboards as individual tabs.
- Step 2** Select the dashboard tab that you want to delete.
- Step 3** Click **Edit dashboard**.
- Step 4** Click **Delete dashboard**.
When the confirmation message appears, review the details carefully. Click **Delete** to permanently remove the dashboard.
-

