



Manage the Crosswork Cluster

This section contains the following topics:

- [Cluster Management Overview, on page 1](#)
- [Check Cluster Health, on page 1](#)
- [Import Cluster Inventory, on page 3](#)
- [Deploy New Cluster Nodes, on page 4](#)
- [View and Edit Data Center Credentials, on page 5](#)
- [View Cluster Job History, on page 6](#)
- [Export Cluster Inventory, on page 6](#)
- [Collect Cluster Logs and Metrics, on page 6](#)
- [Retry Failed Nodes, on page 8](#)
- [Erase Nodes, on page 9](#)
- [Manage Maintenance Mode Settings, on page 10](#)
- [Cluster System Recovery, on page 11](#)
- [Rebalance Cluster Resources, on page 13](#)

Cluster Management Overview

The Cisco Crosswork platform uses a cluster architecture. The cluster distributes platform services across a unified group of virtual machine (VM) hosts, called nodes. The underlying software architecture distributes processing and traffic loads across the nodes automatically and dynamically. This architecture helps Cisco Crosswork respond to how you actually use the system, allowing it to perform in a scalable, highly available, and extensible manner.

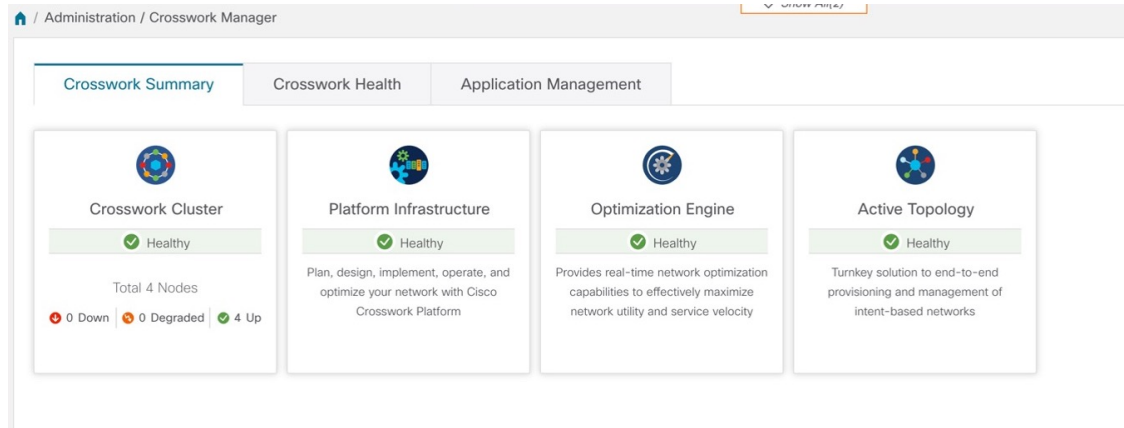
A single Crosswork cluster consists of a minimum of three nodes, all operating in a hybrid configuration. These three hybrid nodes are mandatory for all Cisco Crosswork deployments. If you have more demanding scale requirements, you can add up to three worker nodes. .

As a user assigned in the administrator role, you have full access to all cluster configuration and monitoring functions.

Check Cluster Health

Use the **Crosswork Manager** window to check the health of the cluster. To display this window, from the main menu, choose **Administration > Crosswork Manager**.

Figure 1: Crosswork Manager Window

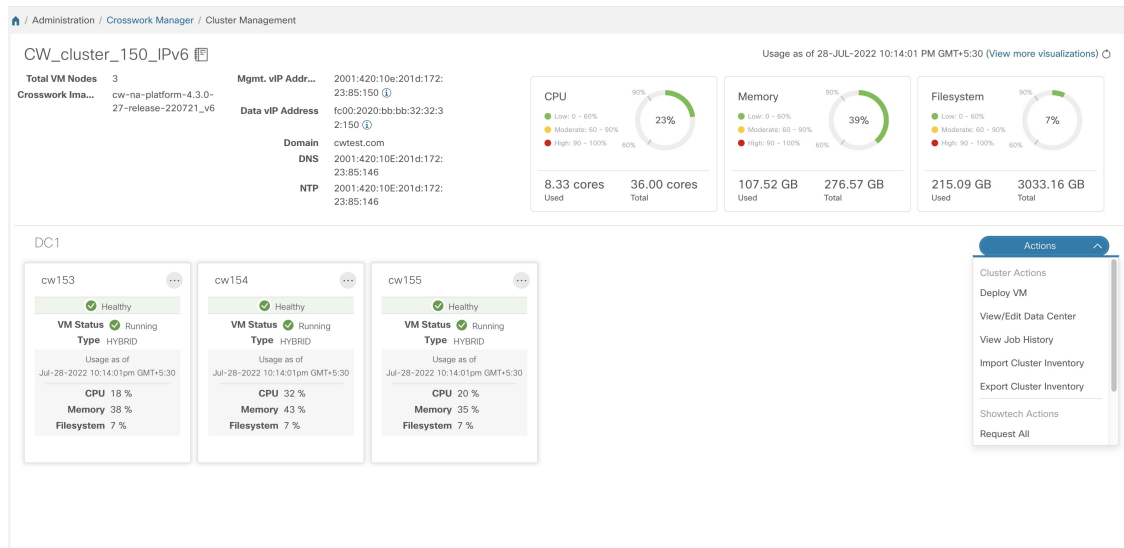


The **Crosswork Manager** window gives you summary information about the status of the cluster nodes, the Platform Infrastructure, and the applications you have installed.

Cluster Management

For details on the nodes in the cluster: On the **Crosswork Summary** tab, click the **Crosswork Cluster** tile. Cisco Crosswork displays a **Cluster Management** window like the one shown in the following figure.

Figure 2: Cluster Management Window



Attention

In some cases of manual installations, the Cluster Management window may not display the inventory details correctly. In such cases, you need to manually import the cluster inventory file as described in [Import Cluster Inventory, on page 3](#)

The top section of the window shows the total resources that the cluster is using. The bottom section breaks down the resource utilization by node, with a separate detail tile for each node. The window shows other details, including the IP addresses in use, whether each node is a hybrid or worker, and so on.

Click the **View more visualizations** link to [Visually Monitor System Functions in Real Time](#).

VM Node Details


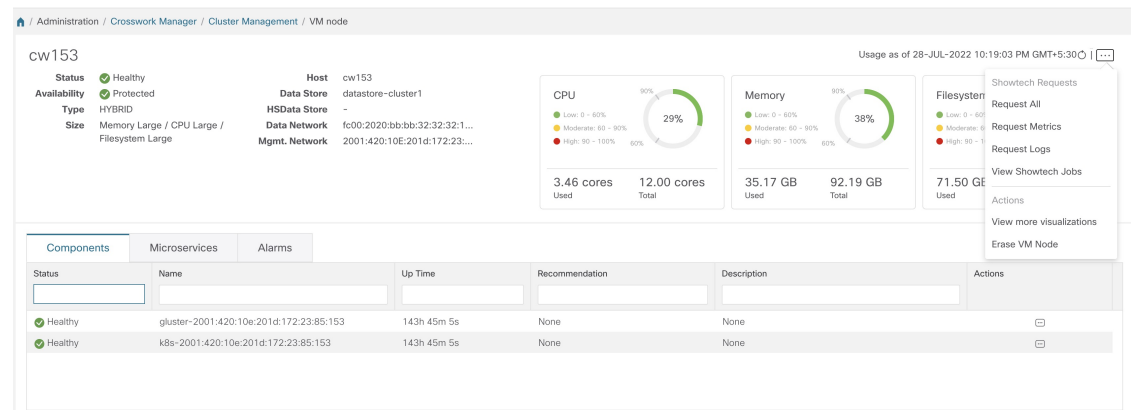
To see details for a single node: On the tile for the node, click  and choose **View Details**. The VM Node window displays the node details and the list of microservices running on the node.

Figure 3: Cluster Management Window



To restart a microservice, click  under the **Action** column, and choose **Restart**.

For information on how to use the **Crosswork Health** tab, see [Monitor Platform Infrastructure and Application Health](#).

Import Cluster Inventory

If you have installed your cluster manually using the vCenter UI (without the help of cluster installer tool), you must import an inventory file (.tfvars file) to Cisco Crosswork to reflect the details of your cluster. The inventory file contains information about the VMs in your cluster along with the data center parameters. Crosswork cannot deploy or remove VM nodes in your cluster until you complete this operation.



Note Please uncomment the "*VM_State*" parameter while importing the cluster inventory file manually. If you fail to do this, the status of the VM will incorrectly appear as "Initializing" even after the VM becomes functional.

- Step 1** From the main menu, choose **Administration > Crosswork Manager**.
- Step 2** On the **Crosswork Summary** tab, click the **Crosswork Cluster** tile to display the **Cluster Management** window.
- Step 3** Choose **Actions > Import Cluster Inventory** to display the **Import Cluster Inventory** dialog box.
- Step 4** (Optional) Click **Download sample template file** to download and edit the template.

Step 5 Click **Browse** and select the cluster inventory file.

Step 6 Click **Import** to complete the operation.

Deploy New Cluster Nodes

After your Cisco Crosswork cluster is formed, you may find you need more nodes to meet your requirements. The following steps show how to deploy a new VM node:



Note The **Crosswork Summary** window and the **Cluster Management** window display information about your cluster. While both windows display the status of the same cluster, there may be slight mismatches in the representation. This occurs because the **Crosswork Summary** window displays the node status based on Kubernetes, while the **Cluster Management** window also considers the node status in the data center.

An example of this mismatch is when a worker node deployment fails in the Crosswork UI due to insufficient data center resources. In this case, the status of the failed worker node is displayed as "degraded" in the **Cluster Management** window, while the same status appears as "down" in the **Crosswork Summary** window.

Before you begin

Before you begin, you must know:

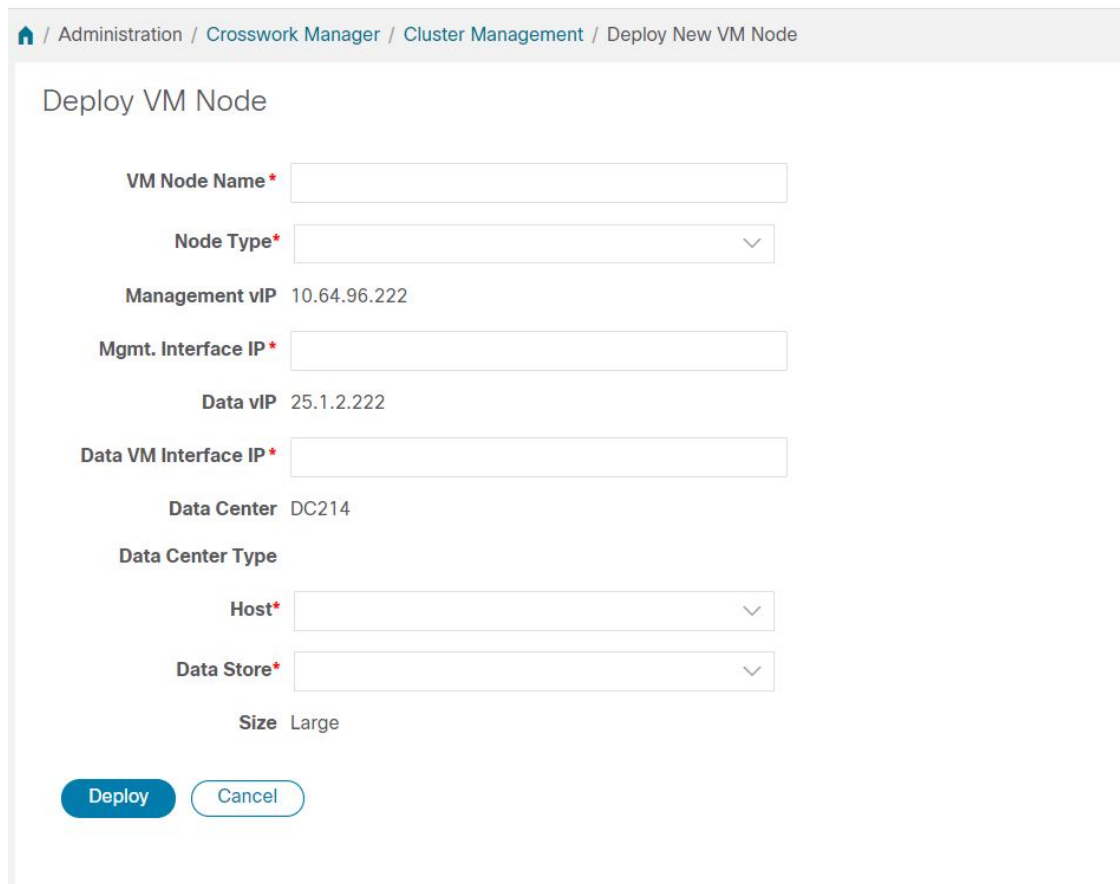
- Details about the Cisco Crosswork network configuration, such as the management IP address.
- Details about the VMware host where you are deploying the new node, such as the data store and data VM interface IP address.
- The type of node you want to add. Your cluster can have a minimum of three hybrid nodes and up to three worker nodes.
- If you installed your cluster manually, you must import the cluster inventory file to Cisco Crosswork before you can deploy a new node. For more information, see [Import Cluster Inventory, on page 3](#). The **Deploy VM** option will be disabled until you complete the import operation.

Step 1 From the main menu, choose **Administration > Crosswork Manager**.

Step 2 On the **Crosswork Summary** tab, click the **Crosswork Cluster** tile to display the **Cluster Management** window.

Step 3 Choose **Actions > Deploy VM** to display the **Deploy New VM Node** window.

Figure 4: Deploy VM Node Window



Deploy VM Node

Administration / Crosswork Manager / Cluster Management / Deploy New VM Node

VM Node Name *

Node Type*

Management vIP 10.64.96.222

Mgmt. Interface IP *

Data vIP 25.1.2.222

Data VM Interface IP *

Data Center DC214

Data Center Type

Host*

Data Store*


Size Large

Deploy Cancel

Step 4 Fill the relevant values in the fields provided.

Step 5 Click **Deploy**. The system starts to provision the new node in VMware. Cisco Crosswork adds a tile for the new node in the **Crosswork Manager** window. The tile displays the progress of the deployment.

You can monitor the node deployment status by choosing **Cluster Management > Actions > View Job History**, or from the VMware user interface.

If you added the VM node using Cisco Crosswork APIs: On the newly added VM node tile, click  and choose **Deploy** to complete the operation.

View and Edit Data Center Credentials

This section explains the procedure to view and edit the credentials for the data center (such as VMware vCenter) where Cisco Crosswork is deployed.

Step 1 From the main menu, choose **Administration > Crosswork Manager**.

Step 2 On the **Crosswork Summary** tab, click the **Crosswork Cluster** tile to display the **Cluster Management** window.

- Step 3** Choose **Actions > View/Edit Data Center** to display the **Edit Data Center** window.
The **Edit Data Center** window displays details of the data center.
- Step 4** Use the **Edit Data Center** window to enter values for the **Access** fields: Address, Username, and Password).
- Step 5** Click **Save** to save the data center credential changes.
-

View Cluster Job History

Use the Job History window to track the status of cluster jobs, such as deploying a VM or importing cluster inventory.

- Step 1** From the main menu, choose **Administration > Crosswork Manager**.
- Step 2** On the **Crosswork Summary** tab, click the **Crosswork Cluster** tile to display the **Cluster Management** window.
- Step 3** Choose **Actions > View Job History**.
The **Job History** window displays a list of cluster jobs. You can filter or sort the **Jobs** list using the fields provided: Status, Job ID, VM ID, Action, and Users.
- Step 4** Click any job to view it in the **Job Details** panel at the right.
-

Export Cluster Inventory

Use the cluster inventory file to monitor and manage your Cisco Crosswork cluster.

- Step 1** From the main menu, choose **Administration > Crosswork Manager**.
- Step 2** On the **Crosswork Summary** tab, click the **Crosswork Cluster** tile to display the **Cluster Management** window.
- Step 3** Choose **Actions > Export Cluster Inventory**.
Cisco Crosswork downloads the cluster inventory gzip file to your local directory.
-

Collect Cluster Logs and Metrics

As an administrator, you can monitor or audit the components of your Cisco Crosswork cluster by collecting periodic logs and metrics for each cluster component. These components include the cluster as a whole, individual nodes in the cluster, and the microservices running on each of the nodes.

Cisco Crosswork provides logs and metrics using the following showtech options:

- **Request All** to collect both logs and metrics.
- **Request Metrics** to collect only metrics.

- **Collect Logs** to collect only logs.
- **View Showtech Jobs** to view all showtech jobs.



Note Showtech logs must be collected separately for each application.


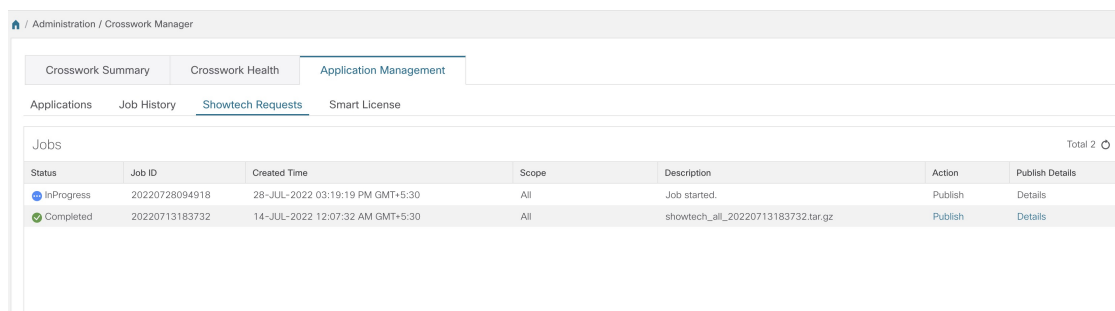
- Step 1** From the main menu, choose **Administration > Crosswork Manager**.
- Step 2** On the **Crosswork Summary** tab, click the **Crosswork Cluster** tile to display the **Cluster Management** window.
- Step 3** To collect logs and metrics for the cluster, click **Actions** and select the showtech option that you want to perform.
- Step 4** To collect logs and metrics for any node in the cluster:
- Click the node tile.
 - Click **Showtech Options** and select the operation that you want to perform.
- Step 5** To collect logs and metrics for the individual microservices running on the VM node, click the  under the **Actions** column. Then select the showtech option that you want to perform.
- Step 6** (Optional) Click **View Showtech Jobs** to view the status of your showtech jobs. The **Showtech Requests** window displays the details of the showtech jobs.

Figure 5: Showtech Requests window



Administration / Crosswork Manager						
Crosswork Summary		Crosswork Health		Application Management		
Applications	Job History	Showtech Requests	Smart License			
Jobs						Total 2
Status	Job ID	Created Time	Scope	Description	Action	Publish Details
InProgress	20220728094918	28-JUL-2022 03:19:19 PM GMT+5:30	All	Job started.	Publish	Details
Completed	20220713183732	14-JUL-2022 12:07:32 AM GMT+5:30	All	showtech_all_20220713183732.tar.gz	Publish	Details

- Step 7** (Optional) Click **Publish** to publish the showtech logs. The **Enter Destination Server** dialog box is displayed. Enter the relevant details and click **Publish**.

Figure 6: Showtech Requests window

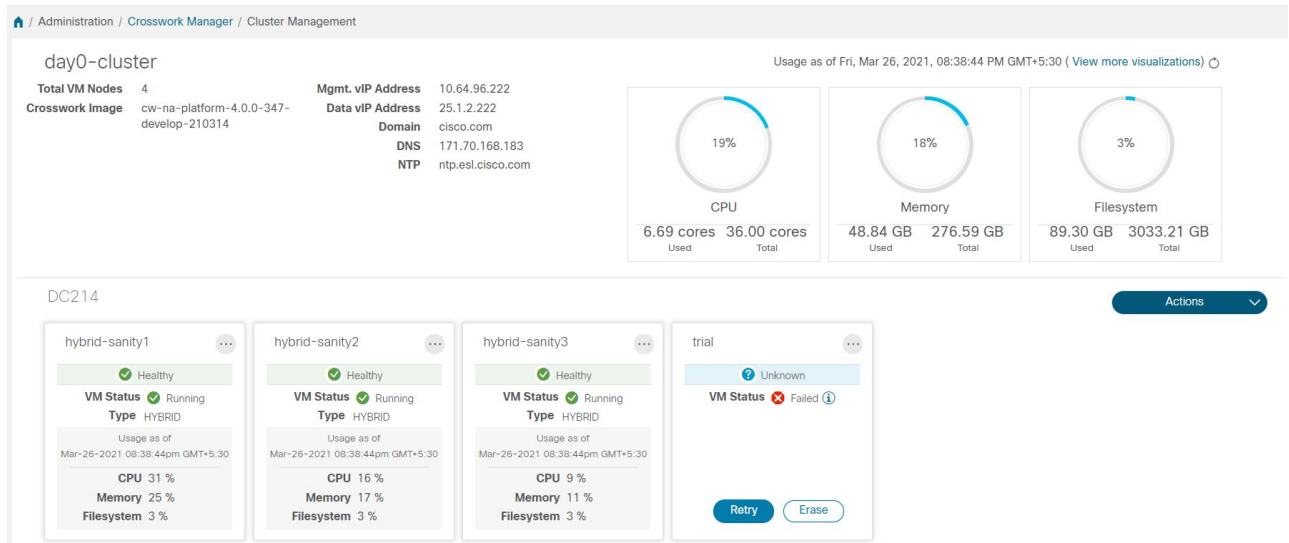
Click **Details** to view details of the showtech log publishing.

Retry Failed Nodes

Node deployments with incorrect information can fail. After providing the correct details, you can retry the deployment.

-
- Step 1** From the main menu, choose **Administration > Crosswork Manager**
- Step 2** On the **Crosswork Summary** tab, click the **Crosswork Cluster** tile to display the **Cluster Management** window.

Figure 7: Cluster Management Window: Failed VM Deployment



Step 3 Click **Retry** on the failed node tile to display the **Deploy New VM Node** window.

Step 4 Provide corrected information in the fields provided.

Step 5 Click **Deploy**.

Erase Nodes

As an Administrator, you can erase (that is, remove or delete) any **failed** or **healthy** node from the Cisco Crosswork cluster. Erasing a node removes the node reference from the Cisco Crosswork cluster and deletes it from the host VM.

The steps to erase a node are the same for both hybrid and worker nodes. However, the number and timing of erasure is different in each case:

- The system must maintain three operational hybrid nodes at all times. If one of the three hybrid nodes is faulty, the system will be functional, but degraded from an availability point of view. In such cases, the faulty node is removed and a new hybrid node needs to be deployed to replace it.
- You can have from one to three worker nodes. While you can erase all of them without consequences, we recommend that you erase and replace them one at a time.
- If one hybrid node is faulty, along with one or more worker nodes and applications, try the "Clean System Reboot" procedure described in [Cluster System Recovery, on page 11](#).

If more than one hybrid node is faulty, follow the "Redeploy and Recover" procedure described in [Cluster System Recovery, on page 11](#).


- If you are still having trouble after taking these steps, contact the Cisco Customer Experience team for assistance.

**Warning**

- Erasing a node is a disruptive action and can block some processes until the action is completed. To minimize disruption, conduct this activity during a maintenance window only.
- Removing worker and hybrid nodes places extra workload on the remaining nodes and can impact system performance. You are encouraged to contact the Cisco Customer Experience team before removing nodes.
- While removing a Hybrid or Worker node, the Cisco Crosswork UI may become unreachable for 1-2 minutes, due to the relocation of the `cw-ui` pod to a new node.

**Note**

In the case of manual cluster installation, you must erase the VM from Crosswork UI and then delete the VM from the data center (e.g. vCenter).

- Step 1** From the main menu, choose **Administration > Crosswork Manager**.
- Step 2** On the **Crosswork Summary** tab, click the **Crosswork Cluster** tile to display the **Cluster Management** window.
- Step 3** On the tile for the node you want to remove, click  and select **Erase** to display the **Erase VM Node** dialog box .
- Step 4** Click **Erase** again to confirm the action.

Note A removed node will continue to be visible in the Grafana dashboard as an entry with only historical data.

Manage Maintenance Mode Settings

Maintenance mode provides a means for shutting down the Crosswork system temporarily. The maintenance mode shut down is graceful. Crosswork synchronizes all application data before the shutdown.

It can take several minutes for the system to enter maintenance mode and to restart after the shut down. During that period, other users should not attempt to log in or use the Crosswork applications.

Before you begin

Notify other users that you intend to put the system in maintenance mode and give them a deadline to log out. The maintenance mode operation cannot be canceled once you initiate it.

- Step 1** To put Crosswork in maintenance mode:
- a) From the main menu, choose **Administration > Settings > System Settings > Maintenance Mode**
 - b) Drag the **Maintenance** slider to the right, or **On** position.
 - c) Crosswork warns you that it is about to initiate a shut down. Click the **Continue** to confirm your choice.

It can take several minutes for the system to enter maintenance mode. During that period, other users should not attempt to log in or use the Crosswork applications.

Note If you wish to reboot the cluster, wait for 5 minutes after system has entered maintenance mode in order to allow the Cisco Crosswork database to sync, before proceeding.

Step 2 To restart Crosswork from maintenance mode:

- a) From the main menu, choose **Administration > Settings > System Settings > Maintenance Mode**
- b) Drag the **Maintenance** slider to the left, or **Off** position.

It can take several minutes for the system to restart. During that period, other users should not attempt to log in or use the Crosswork applications.

Note If a reboot or restore was performed when the system was previously put in maintenance mode, the system will boot up in the maintenance mode and you will be prompted with a popup window to toggle the maintenance mode off. If you do not see a prompt (even when the system was rebooted while in maintenance mode), you must toggle the maintenance mode on and off to allow the applications to function normally.

Cluster System Recovery

When System Recovery Is Needed



Caution The methods explained in this topic may fail if you use a cluster profile consisting of only 3 hybrid VM nodes (and no worker nodes). The failure happens due to the lack of VM resiliency caused by the absence of worker nodes.

At some time during normal operations of your Cisco Crosswork cluster, you may find that you need to recover the entire system. This can be the result of one or more malfunctioning nodes, one or more malfunctioning services or applications, or a disaster that destroys the hosts for the entire cluster.

A functional cluster requires a minimum of three hybrid nodes. These hybrid nodes share the processing and traffic loads imposed by the core Cisco Crosswork management, orchestration and infrastructure services. The hybrid nodes are highly available and able to re-distribute processing loads among themselves, and to worker nodes, automatically.

The cluster can tolerate one hybrid node reboot (whether graceful or ungraceful). During the hybrid node reboot, the system is still functional, but degraded from an availability point of view. The system can tolerate any number of failed worker nodes, but again, system availability is degraded until the worker nodes are restored.

Cisco Crosswork generates alarms when nodes, applications, or services are malfunctioning. If you are experiencing system faults, first examine the alarm. Then check on the health of the individual node, application, or service identified in the alarm. You can use the features described in [Check Cluster Health, on page 1](#) to drill down on the source of the problem and, if it turns out to be a service fault, restart the problem service.

If you see alarms indicating that one hybrid node has failed, or that one hybrid node and one or more worker nodes have failed, start by attempting to reboot or replace (erase and then re-add) the failed nodes. If you are still having trouble after that, consider performing a clean system reboot.

The loss of two or more hybrid nodes is a double fault. Even if you replace or reboot the failed hybrid nodes, there is no guarantee that the system will recover correctly. There may also be cases where the entire system has degraded to a bad state. For such states, you can deploy a new cluster, and then recover the entire system using a recent backup taken from the old cluster.

**Important**

- VM shutdown is not supported on a 3 VM cluster that is running the Crosswork Network Controller solution. If a VM fails, the remaining two VMs cannot support all the pods being migrated from the failed VM. You must deploy additional worker nodes to enable the VM shutdown.
- Reboot of one of the VMs is supported in a 3 VM cluster. In case of a reboot, the VM restore can take from 5 minutes (if the `orch pod` is not running in the rebooted VM) up to 25 minutes (if the `orch pod` is running in the rebooted VM).

The following two sections describe the steps to follow in each case.

Clean System Reboot (VMware)

Follow these steps to perform a clean system reboot:

1. Put Crosswork in Maintenance mode. See [Manage Maintenance Mode Settings, on page 10](#) for more details.
2. Power down the VM hosting each node:
 - a. Log in to the VMware vSphere Web Client.
 - b. In the **Navigator** pane, right-click the VM that you want to shut down.
 - c. Choose **Power > Power Off**.
 - d. Wait for the VM status to change to **Off**.
3. Repeat Step 2 for each of the remaining VMs, until you are sure they are all shut down.
4. Power up the VM hosting the first of your hybrid nodes:
 - a. In the **Navigator** pane, right-click the VM that you want to power up.
 - b. Choose **Power > Power Up**.
 - c. Wait for the VM status to change to **On**, then wait another 30 seconds before continuing.
5. Repeat Step 4 for each of the remaining hybrid nodes, staggering the reboot by 30 seconds before continuing. Then continue with each of your worker nodes, again staggering the reboot by 30 seconds.
6. The time taken for all the VMs to be powered on can vary based on the performance characteristics of your hardware. After all VMs are powered on, wait for a few minutes and login to Crosswork.
7. Move Crosswork out of Maintenance mode. See [Manage Maintenance Mode Settings, on page 10](#) for more details.



Note If your Crosswork cluster is not in a healthy state, your attempts to force maintenance mode will likely fail. Despite a successful attempt, application sync issues may still happen. In such cases, alarms will be generated indicating the list of failed services and the failure reason. If you face this scenario, you may still proceed with the "Redeploy and Restore" method mentioned below.

Redeploy and Restore (VMware)

Follow these steps to redeploy and recover your system from a backup. Note that this method assumes you have taken periodic backups of your system before it needed recovery. For information on how to take backups, see [Manage Cisco Crosswork Backup and Restore](#).

1. Power down the VM hosting each node:
 - a. Log in to the VMware vSphere Web Client.
 - b. In the **Navigator** pane, right-click the VM that you want to shut down.
 - c. Choose **Power > Power Off**.
 - d. Wait for the VM status to change to **Off**.
 - e. Repeat these steps as needed for the remaining nodes in the cluster.
2. Once all the VMs are powered down, delete them:
 - a. In the VMware vSphere Web Client **Navigator** pane, right-click the VM that you want to delete.
 - b. Choose **Delete from Disk**.
 - c. Wait for the VM status to change to **Deleted**.
 - d. Repeat these steps as needed for the remaining VM nodes in the cluster.
3. Deploy a new Cisco Crosswork cluster, as explained in the [Cisco Crosswork Infrastructure 4.4 and Applications Installation Guide](#).
4. Recover the system state to the newly deployed cluster, as explained in [Restore Cisco Crosswork After a Disaster](#).

Rebalance Cluster Resources

As part of cluster management, Crosswork constantly monitors the resource utilization in each cluster node. If the CPU utilization in any of the nodes becomes high (by default, the "high" range is set as 90-100%), Crosswork triggers a notification prompting you to take action. You can then use the **Rebalance** feature to reallocate the resources between the existing VM nodes in your cluster.

If the other nodes in your cluster are also nearing their full capacity, you are recommended to deploy a new worker node before attempting the **Rebalance** option to ensure easy reallocation of resources. For more information about adding a worker node, see [Deploy New Cluster Nodes, on page 4](#).



Caution Rebalancing can take from 15 to 30 minutes during which the Crosswork Applications will be unavailable. Once initiated, a rebalance operation cannot be cancelled.

Before you begin

- Crosswork must be in maintenance mode before rebalancing to ensure data integrity.
- Any users logged in during the rebalancing will lose their sessions. Kindly notify other users beforehand that you intend to put the system in maintenance mode for rebalancing, and give them a deadline to log out.

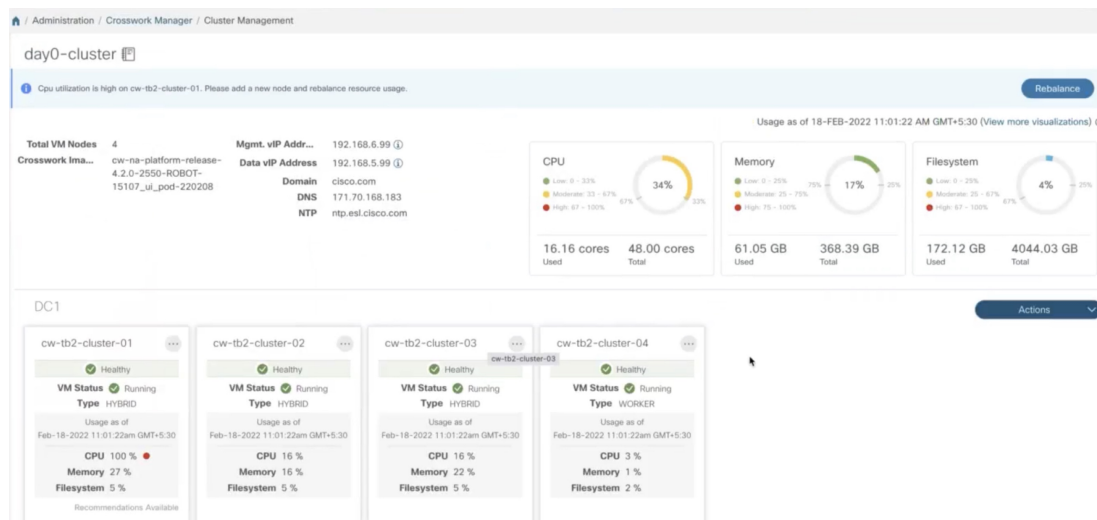
Step 1 From the main menu, choose **Administration > Crosswork Manager**.

Step 2 On the **Crosswork Summary** tab, click the **Crosswork Cluster** tile to display the **Cluster Management** window.

For the sake of this procedure, a sample cluster (**day0-control**) with 3 hybrid nodes and 1 worker node is considered. The CPU utilization is high in one of the hybrid nodes (100% in **cw-tb2-cluster-01**). See the below image for more details.

A banner is displayed below the cluster name warns you about the resource overutilization in the cluster node and recommends adding more worker nodes.

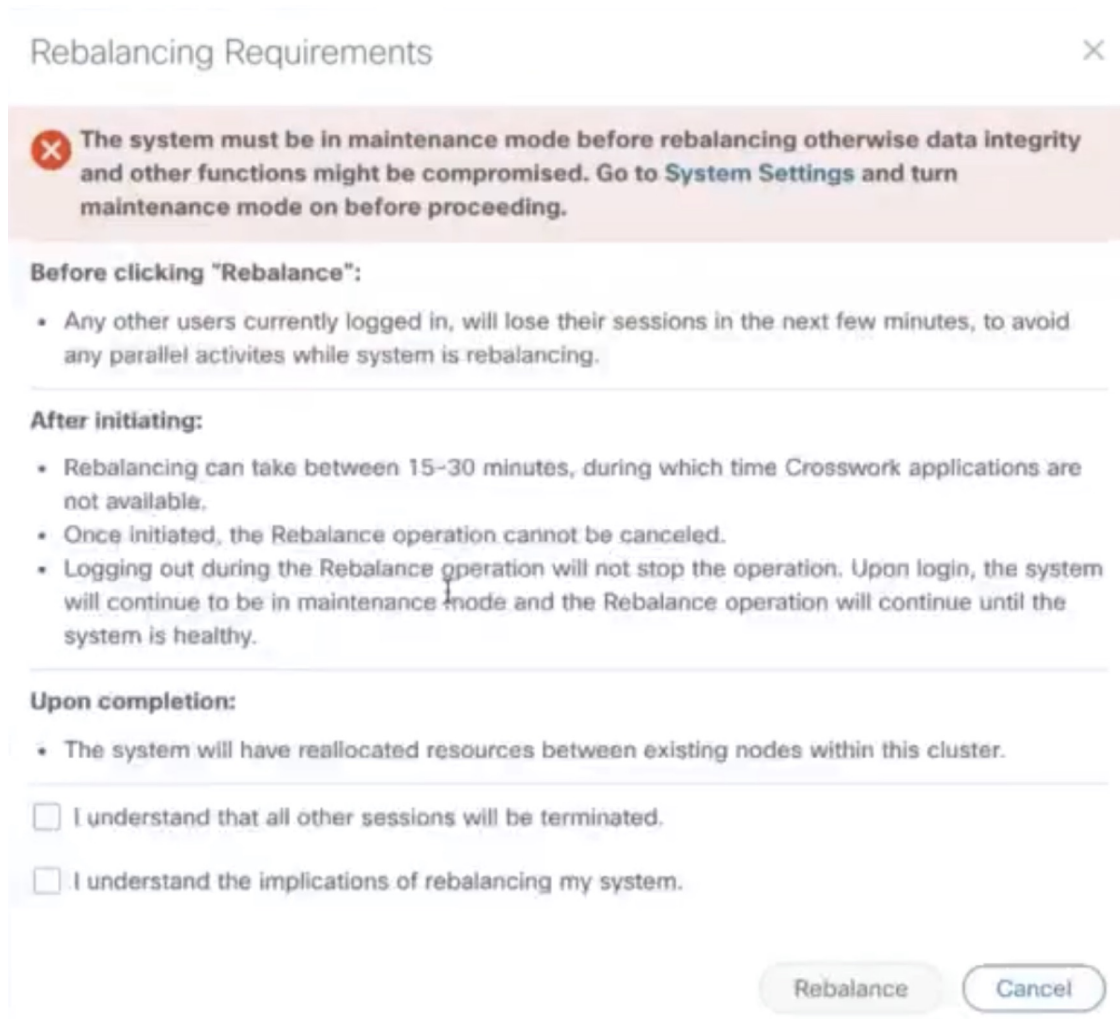
Figure 8: Rebalance notification



On the tile for the node, you can click and choose **View Details** to see more details.

Step 3 Click **Rebalance**, and the **Rebalance Requirements** are displayed. Read through the requirements and select the two checkboxes once you are ready to start the rebalancing.

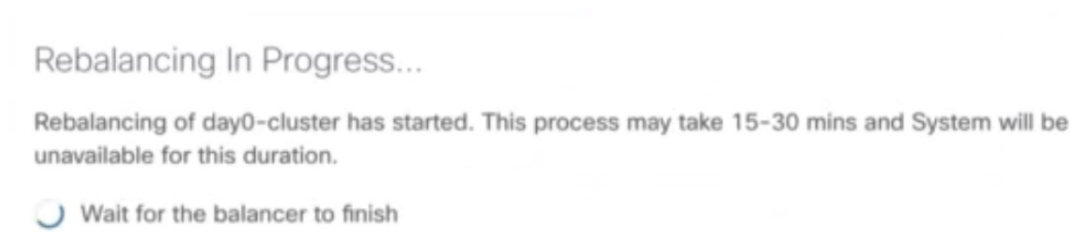
Figure 9: Rebalancing Requirements



Step 4 Click **Rebalance** to initiate the process. Crosswork begins to reallocate the resources in the overutilized VM node to the other nodes in the cluster.

A dialog box indicating the status of rebalancing is displayed. Kindly wait for the process to complete.

Figure 10: Rebalancing Status



Step 5 After rebalancing process is completed, you may see one of the following result scenarios:

- **Success scenario:** A dialog box indicating successful rebalancing operation. Follow the instructions in the dialog box to proceed further.

Figure 11: Rebalancing Result - Success

✓

Rebalancing Complete

✕

Rebalancing of Day0-Cluster has completed. System resources have been reallocated between existing nodes within this cluster.

On completion, please note:

- Your system is now ready to use. Go to [System Settings](#) and turn Maintenance Mode OFF.
- Please allow 1 hour for cluster to be balanced and return to a working state.

If resources are still imbalanced, add new resources and try to rebalance the system again. In case system alarms or any other issues persist, review “Alarms” for respective nodes or contact TAC.

Close

- **Failure scenario - scope available to add new worker nodes:** A dialog box indicating rebalancing failure is displayed. In this case, the system prompts you to add a new worker node and try the rebalance process again.

Figure 12: Rebalancing Result - Add new Worker node

! ⚠

Process Not Completed

✕

Rebalancing of Day0-Cluster has not completed. System resources could not be reallocated in this cluster.

Even though node usage appears underutilized, due to minimum reservations by services, the system could not be rebalanced. Minimum reservation is defined as the minimum resource required by the service upon start. The system guarantees these resources by locking them even though it might not use these resources immediately. Please see external documentation for more information.

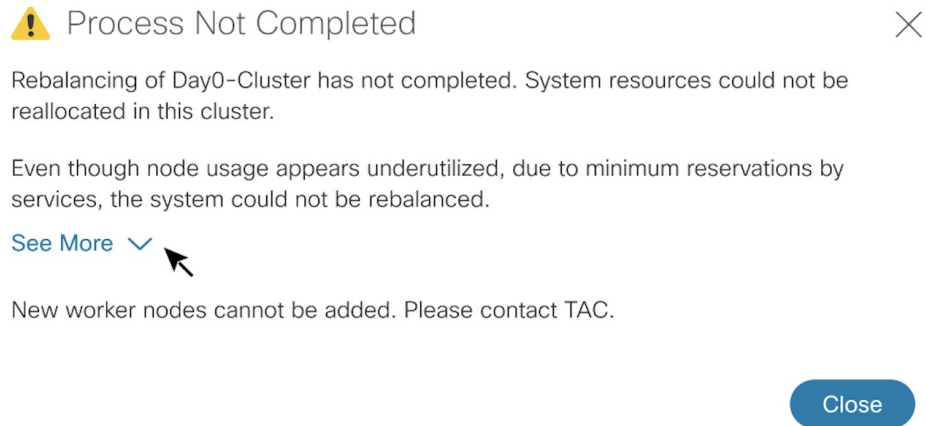
[See Less](#) ^

Add a new worker node and rebalance again.

Close

- **Failure scenario - no scope to add new worker nodes:** A dialog box indicating rebalancing failure is displayed. In this case, the system prompts you to contact the TAC as new worker nodes cannot be added.


Figure 13: Rebalancing Result - Add new Worker node



⚠ Process Not Completed ✕

Rebalancing of Day0-Cluster has not completed. System resources could not be reallocated in this cluster.

Even though node usage appears underutilized, due to minimum reservations by services, the system could not be rebalanced.

[See More](#) ∨ 

New worker nodes cannot be added. Please contact TAC.

[Close](#)
