



Cisco SCA BB System Overview

The Cisco Service Control Application for Broadband (Cisco SCA BB) is the Cisco Service Control solution that allows broadband service providers to gain network-traffic visibility, to control the distribution of network resources, and to optimize traffic in accordance with their business strategies. It enables service providers to reduce network costs, improve network performance and customer experience, and create new service offerings and packages. This chapter contains the following sections:

- [System Components](#), page 1
- [Subscribers and Subscriber Modes](#), page 3
- [Service Configuration](#), page 6

System Components

The Cisco Service Control solution consists of four main components:

- The Cisco Service Control Engine (Cisco SCE) platform—A flexible and powerful dedicated network-usage monitor that is purpose-built to analyze and report on network transactions at the application level.
For more information about the installation and operation of the Cisco SCE platform, see the *Cisco SCE Platform Installation and Configuration Guides*.
- The Cisco Service Control Subscriber Manager—A middleware software component that is used where dynamic binding of subscriber information and policies are required. The Subscriber Manager manages subscriber information and provisions it in real time to multiple Cisco SCE platforms. The Subscriber Manager can store subscriber policy information internally, and act as a stateful bridge between the AAA system (such as RADIUS and DHCP) and the Cisco SCE platforms.
For more information about the installation and operation of the Subscriber Manager, see the *Cisco Service Control Management Suite Subscriber Manager User Guide*.

The Quota Manager (QM) is an optional component of the Subscriber Manager. It enables Service Control solution providers to manage subscriber quota across subscriber sessions with a high degree of flexibility.

For more information about the installation and operation of the QM, see the *Cisco Service Control Management Suite Quota Manager User Guide*.
- The Cisco Service Control Collection Manager (CM)—An implementation of a collection system that receives Raw Data Records (RDRs) from one or more Cisco SCE platforms. It collects usage information

and statistics, and stores them in a database. The CM also converts subscriber usage information and statistics into simple text-based files for further processing and collection by external systems.

For more information about the installation and operation of the CM, see the *Cisco Service Control Management Suite Collection Manager User Guide*.

- The Service Control Application (SCA) Reporter—A software component that processes data stored by the CM and provides a set of insightful reports from this data. The SCA Reporter can run as a standalone or as an integrated part of the Console.

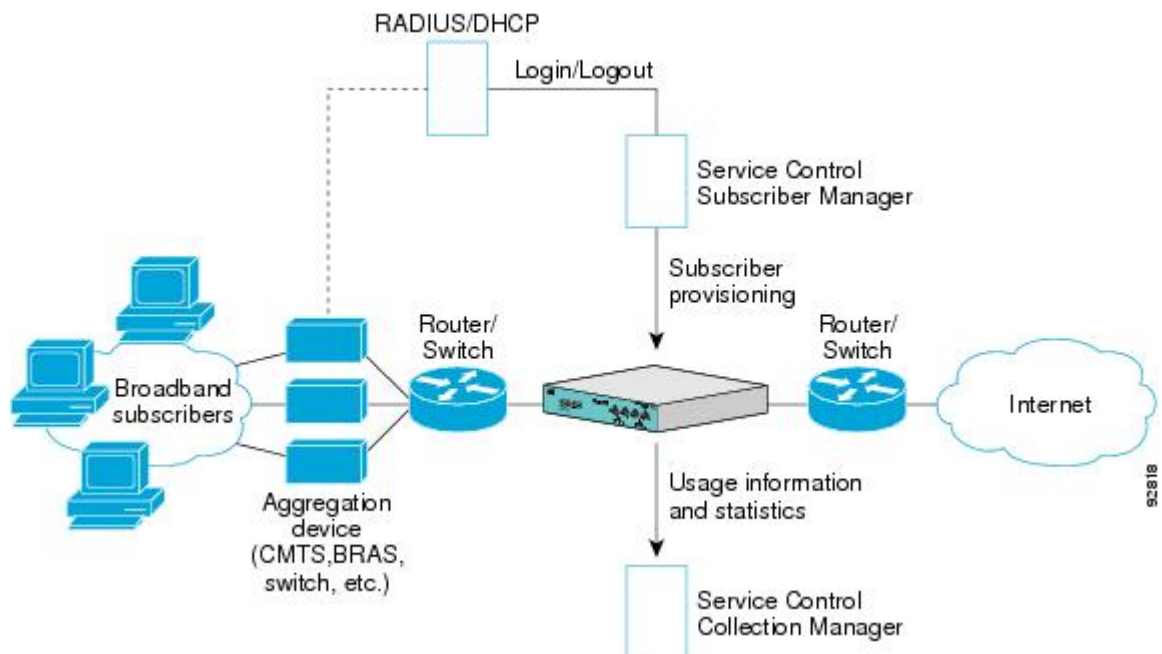
For more information about the installation and operation of the Reporter, see the *Cisco Service Control Application Reporter User Guide*.

Together, the Cisco SCE platform, the Cisco Service Control Collection Manager, the Cisco Service Control Subscriber Manager, and the SCA Reporter are designed to support detailed classification, analysis, reporting, and control of IP network traffic. The Cisco Service Control Collection Manager, the SCA Reporter, and the Cisco Service Control Subscriber Manager are optional components; not all deployments of the Cisco Service Control solution require them. Sites that employ third-party collection and reporting applications, those that do not require dynamic subscriber-aware processing, and those that use a RADIUS or DHCP sniffing option may not require all of these components.

The following figure illustrates the flow of information in the Cisco Service Control solution.

- Horizontal flow—Represents traffic between subscribers and an IP network. The Cisco SCE platform monitors traffic flow.
- Vertical flow—Represents transmission of the Raw Data Records (RDRs) from the Cisco SCE platform to the CM. The Subscriber Manager may be added to the control flow to provide subscriber data. This allows Cisco SCA BB to conduct subscriber-level analysis and control.

Figure 1: Flow of Information in Cisco SCA BB



Subscribers and Subscriber Modes

One of the fundamental entities in the Cisco Service Control solution is a *subscriber*. A subscriber is the most granular entity on which Cisco SCA BB can individually monitor, account, and enforce a policy. In the most granular instance of the Cisco SCA BB system a subscriber is an actual customer of the service provider on whom an individual policy is implemented. However, you may also configure Cisco SCA BB to monitor and control traffic at a higher granularity, such as when monitoring or controlling traffic by subnets or aggregation devices.

One of the most important decisions you must take when designing a service control solution is what subscribers in the system represent. This decision determines which subscriber mode is used, which in turn determines what (if any) integrations are required and what policies to define. The following sections describe the different subscriber modes supported and, for each mode, the functions supported, any prerequisites, and the components needed.

Cisco SCA BB supports the following four subscriber modes:

- Subscriberless mode—No subscribers are defined. Control and link-level analysis functions are provided at a global platform resolution.
- Anonymous subscriber mode—IP addresses are controlled and monitored individually. The Cisco SCE platform automatically identifies IP addresses as they are used and assigns them to a package.
- Static subscriber mode—Incoming IP addresses are bound and grouped statically into “subscribers” as configured by the system operator.
- Subscriber-aware mode—Subscriber information is dynamically bound to the IP address currently in use by the subscriber. Subscriber-aware mode can be achieved by integrating Cisco SCA BB with the system (RADIUS, DHCP) that assigns IP addresses to subscribers, or by sniffing this information. Policy information is either administered to Cisco SCA BB directly or provisioned dynamically via an integration.

Subscriberless Mode

Subscriberless mode is the choice for sites where control and analysis functions are required only at a global platform resolution. It can be used, for example, to monitor and control the total P2P traffic over the link.

Subscriberless mode requires no integration; hence, the Cisco Service Control Subscriber Manager is not required.

**Note**

The number of subscribers or inbound IP addresses does not influence the Subscriberless mode. Hence, the total number of subscribers using the monitored link is unlimited from the point of view of the Cisco SCE platform.

Anonymous Subscriber Mode

Anonymous subscriber mode provides the means to analyze and control network traffic at subscriber-inbound IP address granularity.

Use this mode when:

- You do not require subscriber-differentiated control or subscriber-level quota tracking
- Analysis on an IP level is sufficient
- When offline IP-address/subscriber binding can be performed

For example, you can identify which subscribers generate the most P2P traffic by identifying the top IP addresses and correlating them to individual subscribers using RADIUS or DHCP logs. The total bandwidth of P2P traffic allowed for each subscriber can also be limited.

Anonymous subscriber mode requires no integration or static configuration of the IP addresses used, so the Cisco Service Control Subscriber Manager is not required.

In this mode, ranges of IP addresses are configured directly on the Cisco SCE platform. Cisco SCE Platform dynamically creates “anonymous” subscribers for these IP addresses, using the IP address as the subscriber name.

**Note**

The total number of concurrently active anonymous subscribers supported by the Cisco SCE platform is the same as the total number of concurrently active subscribers.

Static Subscriber Mode

Static subscriber mode binds incoming IP addresses together into groups, so that traffic from and to defined subscribers can be controlled as a group. For example, you can define all traffic from and to a particular network subnet (used by multiple subscribers concurrently) as a (virtual) “subscriber” and controlled or viewed as a group.

Static subscriber mode supports cases in which the entity controlled by the Cisco Service Control solution uses a constant IP address or address range that does not change dynamically, such as:

- Environments where the subscriber IP addresses do not change dynamically via, for example, DHCP or RADIUS
- Deployments in which a group of subscribers using a common pool of IP addresses (such as all those served by a particular aggregation device) are managed together to provide a shared bandwidth to the entire group

The system supports the definition of static subscribers directly on a Cisco SCE platform; it does not require external management software (such as the Cisco Service Control Subscriber Manager). Use the Cisco SCE platform CLI to define the list of subscribers, their IP addresses, and the associated package.

Subscriber-Aware Mode

In subscriber-aware mode, the subscriber information (OSS ID and policy) that is dynamically bound to the (IP) address currently in use by the subscribers are populated on the Cisco SCE.

The subscriber information is populated regardless of the IP address in use and provides differentiated and dynamic control per subscriber and subscriber-level analysis. Use this mode to control and analyze traffic on a subscriber level, to monitor subscriber usage, and to assign and enforce different control policies (packages) for different subscribers.

In this mode, the Cisco Service Control Subscriber Manager may provision the Cisco SCE platform with subscriber information.

Subscriber Modes--Summary

Table 1: Summary of Subscriber Modes

Mode	Features Supported	Main Advantages	Use for...
Subscriberless mode	<ul style="list-style-type: none"> Global (platform-level) analysis and control 	<ul style="list-style-type: none"> No subscriber configuration required. 	<p>Global control solution or subscriber-level analysis.</p> <p>Examples:</p> <ul style="list-style-type: none"> Control P2P uploads at peering points. Limit total bandwidth of P2P to a specified percentage.
Anonymous subscriber mode	<ul style="list-style-type: none"> Global analysis and control Individual IP address-level analysis and control <ul style="list-style-type: none"> Global analysis and control Control based on individual or group IP addresses as configured statically to the Cisco SCE platform 	<ul style="list-style-type: none"> No subscriber configuration required; only define subscriber IP address ranges used. Provide subscriber-level control without integration. 	<p>IP-level analysis or control that is not differentiated per subscriber, and where offline IP-address/subscriber binding is sufficient.</p> <p>Examples:</p> <ul style="list-style-type: none"> Limit P2P bandwidth per subscriber. Identify top subscribers by identifying top IP addresses and correlating them with RADIUS or DHCP logs.

Mode	Features Supported	Main Advantages	Use for...
Static subscriber mode	<ul style="list-style-type: none"> • Global analysis and control • Control based on individual or group IP addresses as configured statically to the Cisco SCE platform 	<ul style="list-style-type: none"> • One-time static subscriber configuration, with no integration requirements. • Manage subscriber traffic in logical groups. 	<p>Control of traffic of groups of subscribers.</p> <p>Example:</p> <ul style="list-style-type: none"> • Assign a bandwidth limit for P2P traffic for each group of subscribers using a single CMTS device.
Subscriber-aware mode	<ul style="list-style-type: none"> • Full system functionality 	<ul style="list-style-type: none"> • Differentiated and dynamic control per subscriber. • Subscriber-level analysis, regardless of IP address in use. 	<p>Control and analysis of traffic on a subscriber level.</p> <p>Examples:</p> <ul style="list-style-type: none"> • Monitor subscriber-usage, regardless of IP addresses. • Assign different control policies (packages) to different subscribers, and change packages dynamically.

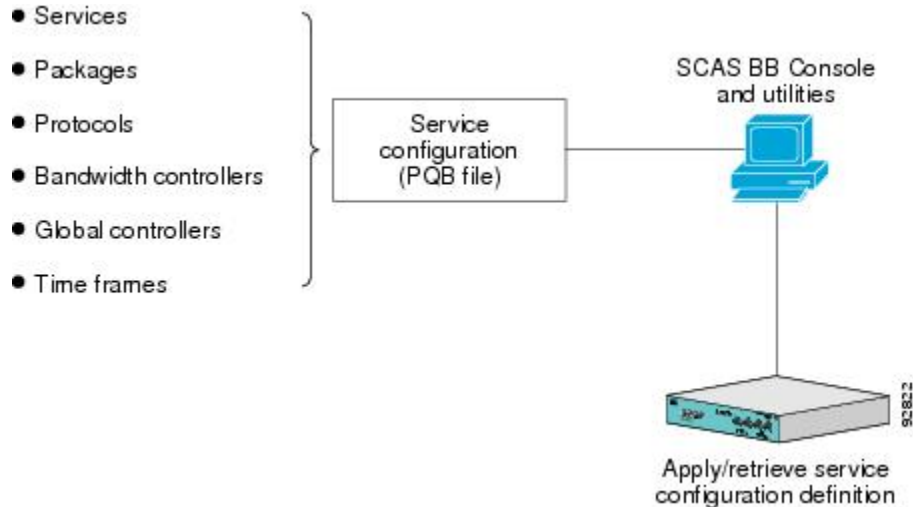
Service Configuration

Service configuration defines the way the Cisco SCE platform analyses and controls traffic. In general terms, service configuration defines the following:

- Protocol and service classification
- Packages and policies
- Bandwidth controllers

- Global controllers

Figure 2: Service Configuration



Service configuration is accomplished using one of the following:

The Cisco SCA BB Console

The Cisco SCA BB Console is a set of GUI tools that are used to manage, configure, and monitor the solution components.

The Console is fully documented in the remainder of this guide.

The Service Configuration Utility

The Cisco SCA BB Service Configuration Utility (servconf) is a simple command-line utility that you can use to apply PQB configuration files onto Cisco SCE platforms or to retrieve the current configuration from a Cisco SCE platform and save it as a PQB file. The utility configures Cisco SCE platforms with the service configuration defined in a PQB file. You can install and execute it in a Windows environment.

For full documentation of the servconf, see [“The Cisco SCA BB Service Configuration Utility” section](#).

The Service Configuration API

The Service Configuration API is a set of Java classes used to:

- Program and manage service configurations
- Apply service configurations to the Cisco SCE platforms
- Integrated applications with third-party systems

The service configuration API allows service providers to automate and simplify management and operational tasks.

The Service Configuration API is documented in *Cisco Service Control Application for Broadband Service Configuration API Programmer Guide*.