



## CHAPTER 4

# Managing Report Instances

---

Revised: April 21, 2010, OL-8411-11

## Introduction

The Cisco Service Control Application Reporter (SCA Reporter) installation includes report templates for a wide variety of reports, such as:

- Global, per package, or per subscriber hourly or daily usage volume per service
- Top server/clients/protocols/web hosts/e-mail senders/newsgroups
- Top P2P consumers/uploaders/downloaders/protocols
- Global, package, or subscriber bandwidth per service

Each report instance is based on a report template. You can create, select, duplicate, and delete report instances in the Templates view of the SCA Reporter. You can add frequently used reports to the Favorites view. When you select a report instance, its properties are displayed in the Properties view; you can specify values for the various report properties. For example, if you want to see global bandwidth per service, you can create a new report instance from the Templates view. The Properties view allows you to specify the desired service(s), traffic direction, and time frame (either start/end time or previous number of hours).

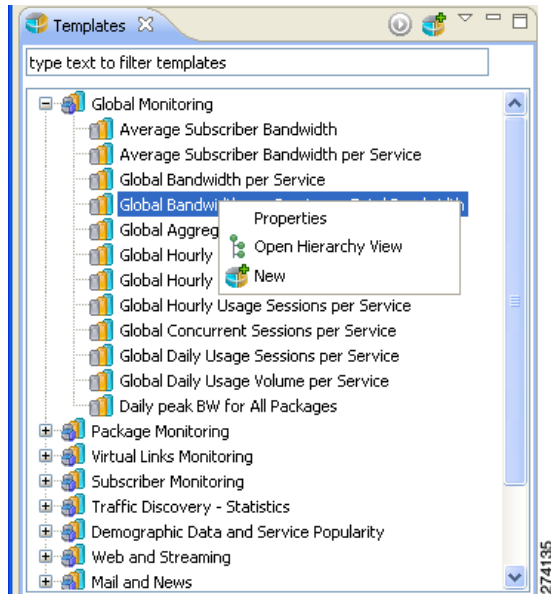
The exact procedure for defining a report instance depends on the report template selected. The example in this chapter is intended as a general guide to the process of creating and defining a new report instance.

- [Creating a New Report Instance, page 4-2](#)
- [Modifying Existing Report Instances, page 4-8](#)
- [Configuring Report Instance Properties, page 4-8](#)
- [Duplicating an Existing Report Instance, page 4-10](#)
- [Renaming an Existing Report Instance, page 4-10](#)
- [Deleting a Report Instance, page 4-11](#)
- [Removing a Report Instance from Favorites, page 4-11](#)
- [Modifying a Report Chart Title, page 4-12](#)

# Creating a New Report Instance

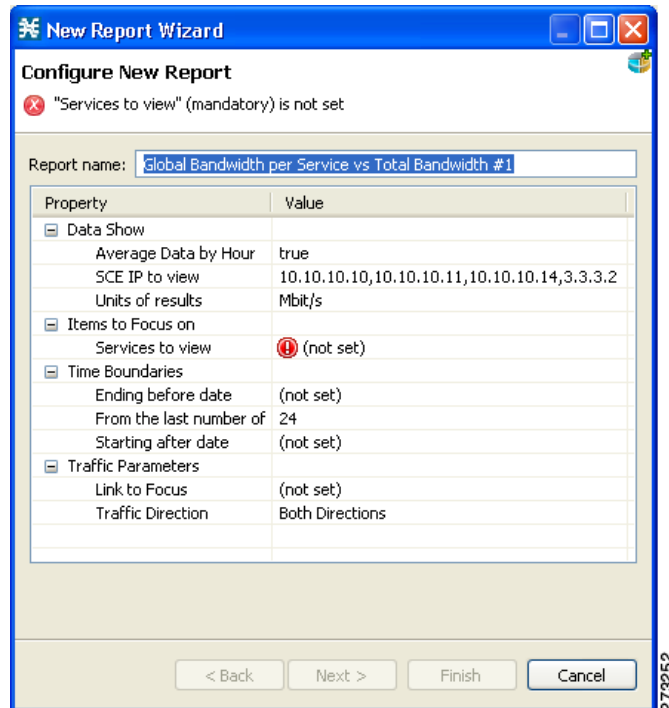
- Step 1** Do one of the following:
- In the Templates view, right-click a report template (for example, **Global Monitoring > Global Bandwidth per Service versus Total Bandwidth**).
  - In the Templates view, double-click a **report template**. A popup menu appears (Figure 4-1).

**Figure 4-1** Templates Popup Menu



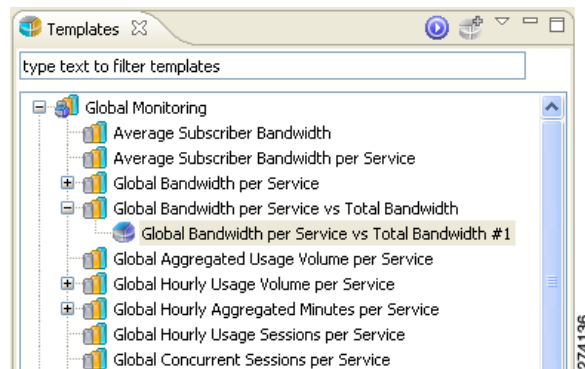
- Step 2** From the menu, select **New**.  
The New Report Wizard appears (Figure 4-2).

Figure 4-2 New Report Wizard




A report instance is added below the report template [Figure 4-3](#)).

Figure 4-3 Report Instance



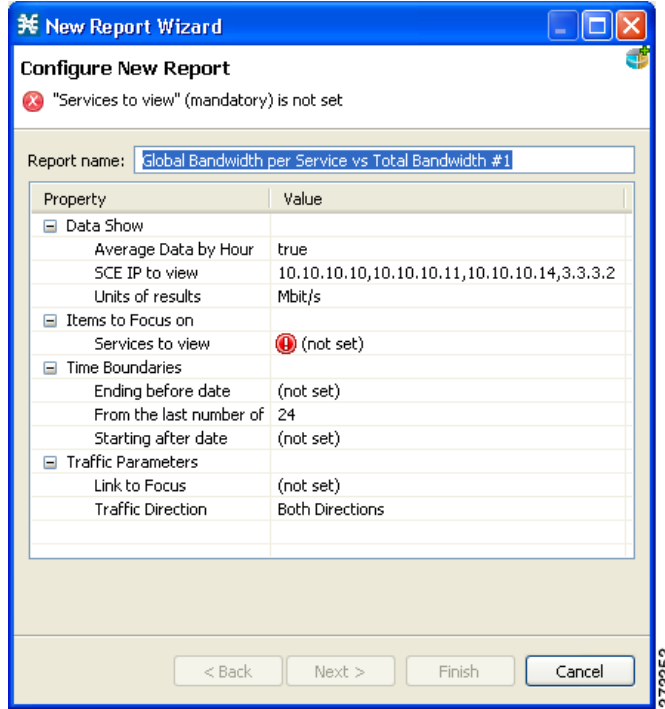
The report instance has the name **Global Bandwidth per Service versus Total Bandwidth #1**. (If you create another report instance from this report template, it will be named **Global Bandwidth per Service vs Total Bandwidth #2**, and so on. You can optionally rename report instances by entering a name in the **Report name** field.)

**Step 3** Configure the report instance properties.

If any property has the value  (**not set**), you must assign it a value ([Figure 4-4](#)).

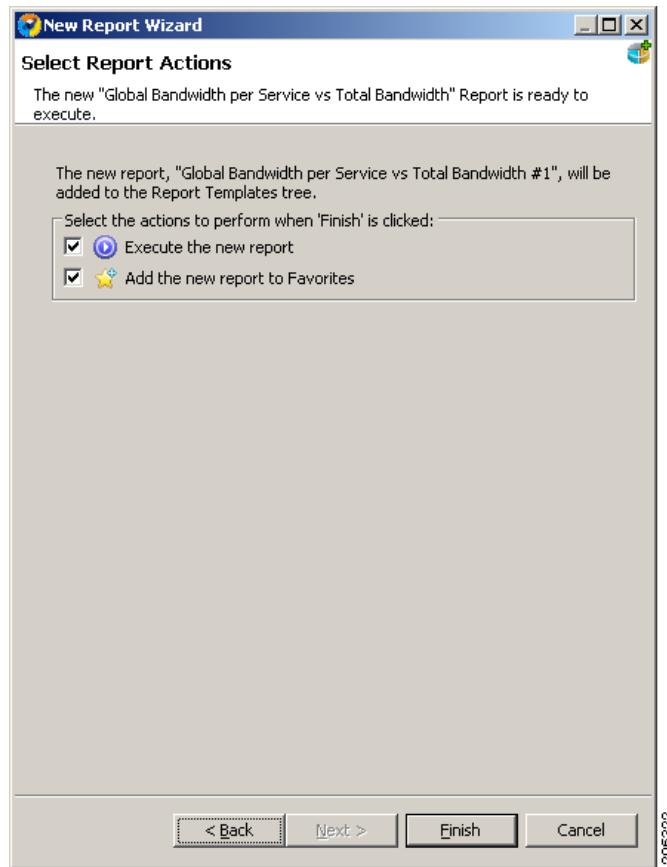
**Step 4** Click **Next**.

Figure 4-4 Report Instance Properties



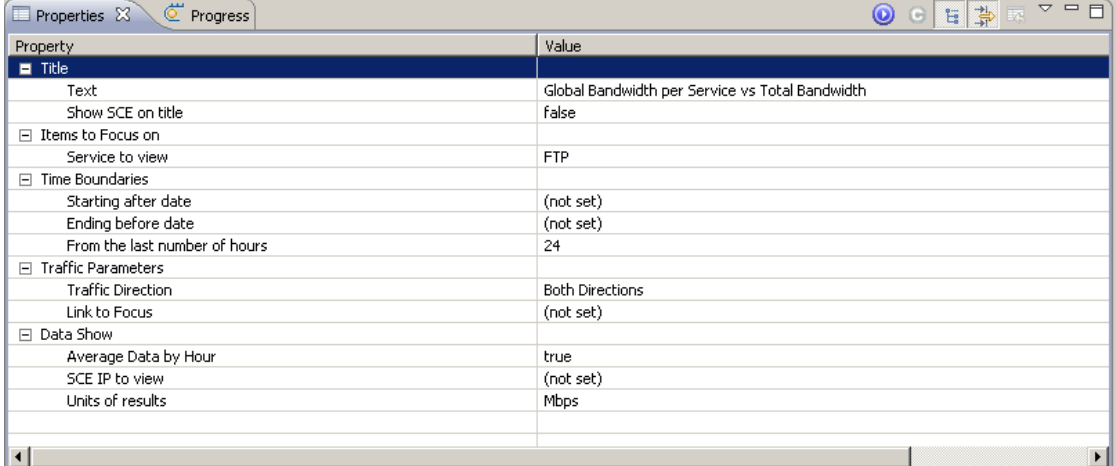
**Step 5** (Optional) Uncheck **Execute the new report** (Figure 4-5).

**Step 6** (Optional) Uncheck **Add the new report to Favorites** (Figure 4-5).


**Figure 4-5** Report Actions**Step 7** Click **Finish**.

A report instance is added below the report template.

The Properties view opens in the bottom right of the SCA Reporter window, displaying the basic and advanced report instance properties (Figure 4-6).

**Figure 4-6** Properties (Report Instance)


Property	Value
<b>Title</b>	
Text	Global Bandwidth per Service vs Total Bandwidth
Show SCE on title	false
<b>Items to Focus on</b>	
Service to view	FTP
<b>Time Boundaries</b>	
Starting after date	(not set)
Ending before date	(not set)
From the last number of hours	24
<b>Traffic Parameters</b>	
Traffic Direction	Both Directions
Link to Focus	(not set)
<b>Data Show</b>	
Average Data by Hour	true
SCE IP to view	(not set)
Units of results	Mbps

You can display all report instance properties by clicking  (Show Advanced Properties).

## Using the Reports View Toolbar

After a report is created, you can perform several actions on the active report using the Reports view toolbar.

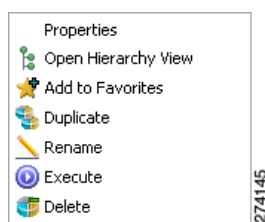
For a description of the available actions, see the “[Report Actions](#)” section on page 5-2.

## Adding a Report Instance to Favorites

If you have a report instance that you generate frequently, you can add it to the Favorites view where you can quickly access, rename, and delete the instance as well as generate reports.

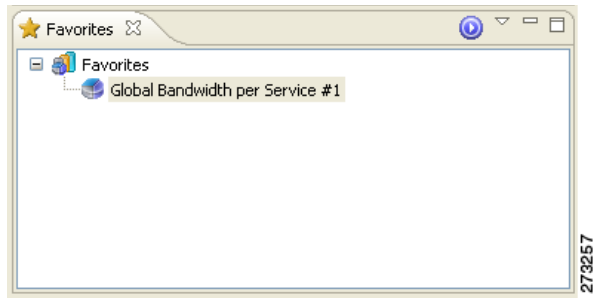
**Step 1** In the Templates view, right-click a report instance.

A popup menu appears ([Figure 4-7](#)).

**Figure 4-7** Templates Popup Menu

**Step 2** From the menu, select **Add to Favorites**. The report instance is added to the Favorites View ([Figure 4-8](#)).

**Figure 4-8** Favorites



## Modifying Existing Report Instances

- Step 1** Select a report instance. Do one of the following:
- Select an existing report view and, from the drop-down menu above the view, select **Go to report**.
  - Select a report instance from the Templates view.
  - Select a report instance from the Favorites view.

The Properties view displays the report instance properties.


- Step 2** Edit a property by clicking on the row of the property and making changes.  
The change is saved. The new value is used the next time the report instance is executed.


## Configuring Report Instance Properties

The following is an example of assigning values to report instance properties.

- Step 1** In the Templates view or Favorites view, choose (or create) a report instance.  
The report instance is selected in the Templates view, and the Properties view displays the report instance properties.




**Note** If the property that you wish to modify does not appear, click  (Show Advanced Properties).

- Step 2** Click in the **Traffic Direction** property row and then click the  icon that appears.  
A drop-down menu of property values appears (Figure 4-9).

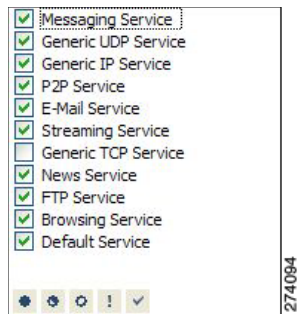
**Figure 4-9** Property Values Drop-Down Menu



If fewer than five items appear in the list, a drop-down menu opens. If five or more items exist, a list box opens.


- Step 3** Select a value.
- Step 4** Click in the **Services to View** property row and then click the  icon that appears.  
A checklist of property values appears (Figure 4-10).



**Figure 4-10** Property Values Checklist

**Step 5** Check the services you want to view.

**Step 6** Click  (OK).

**Step 7** Click in the **Ending Before Date** property row and then click the  icon that appears. A choose date and time dialog box appears (Figure 4-11).

**Figure 4-11** Choose Date and Time

**Step 8** Select a date and time and click **OK**.

**Step 9** Click  (**Execute**).

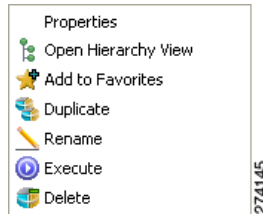
The report is generated with the configured values.

## Duplicating an Existing Report Instance

Duplicating an existing report instance is a useful way to create a new report instance similar to an existing report instance. It is faster to duplicate a report instance and then modify the duplicate, rather than to define the new report instance.

**Step 1** In the Templates view, right-click a report instance. A popup menu appears (Figure 4-12).

**Figure 4-12** *Templates Popup Menu*



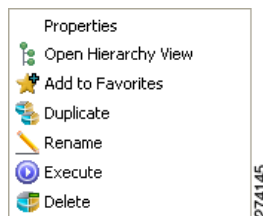
**Step 2** From the menu, select **Duplicate**.  
The report instance is duplicated.

## Renaming an Existing Report Instance

You can rename an existing report instance. This is useful when the same report is generated on a regular basis. You can include the date or other identifying information in the name of the report.

**Step 1** In the Templates view or Favorites view, right-click a report instance. A popup menu appears (Figure 4-13).

**Figure 4-13** *Templates Popup Menu*



**Step 2** From the menu, select **Rename**.  
The report instance is highlighted and you can edit its name.

**Step 3** Enter a new name and press **Enter**.  
The report instance is renamed and listed with the new name.

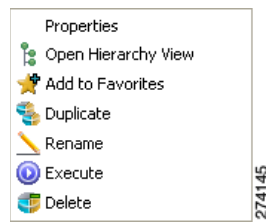
## Deleting a Report Instance

You can delete report instances.

- Step 1** In the Templates view or Favorites view, right-click a report instance (or select several instances, by holding down the **Ctrl** key while selecting the report instances, and then right-click).

A popup menu appears (Figure 4-14).

**Figure 4-14** *Popup Menu*

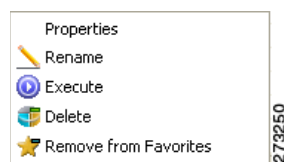


- Step 2** From the menu, select **Delete**. The selected report instances are deleted.

## Removing a Report Instance from Favorites

- Step 1** In the Favorites view, right-click a report instance. A popup menu appears (Figure 4-15).

**Figure 4-15** *Favorites Popup Menu*

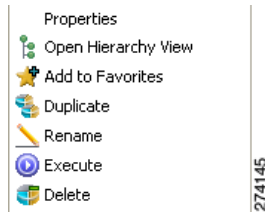


- Step 2** From the menu, select **Remove from Favorites**.  
The report instance is removed from the Favorites view.

# Modifying a Report Chart Title

**Step 1** In the Favorites view, right-click a report instance. A popup menu appears (Figure 4-16).

**Figure 4-16** Favorites Popup Menu



**Step 2** From the menu, select **Properties**.

The report chart instance is highlighted and you can edit its title.

**Step 3** Enter a new title and press **Enter**.

The report chart instance is renamed and listed with the new title.

**Step 4** To add the SCE as subtitle, configure the report chart instance properties.

Set the value of **Show SCE on Title** to true.

**Step 5** Click  (**Execute**).

The report is generated with the configured values.