



CHAPTER 3

Configuring Cisco Insight Reporter v3.1

This chapter describes the procedure to configure the Cisco Insight Reporter v3.1 application and to generate the first report.

This chapter contains the following sections:

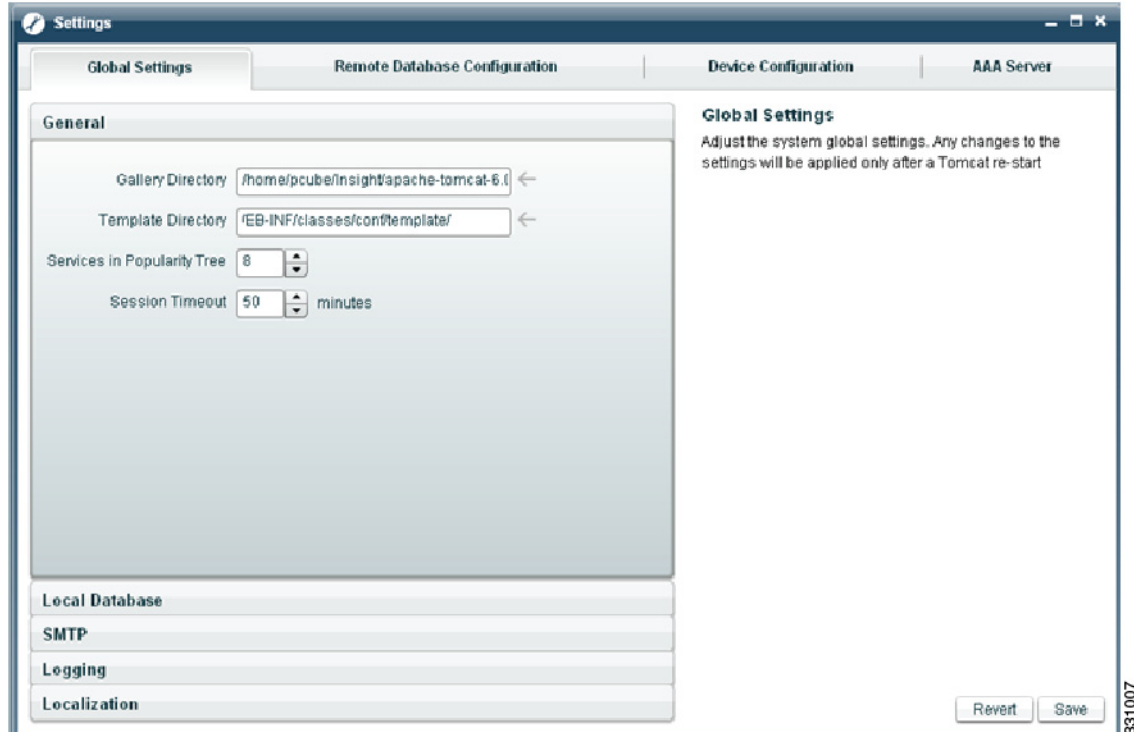
- [Setting the Application Properties, page 3-1](#)
- [Configuring Traffic Databases and Devices, page 3-2](#)
- [Configuring Network Topology, page 3-4](#)
- [Configuring Accounts, page 3-7](#)
- [Running the First Report, page 3-8](#)

Setting the Application Properties

To set up the application properties, perform the following steps

-
- Step 1** Open the **Settings Management** from the Module Launcher. You see a similar page to that in [Figure 3-1 on page 3-2](#).
- Step 2** Select the **Global Settings** tab.
- Step 3** Define **General Settings**.
- These should be by default configured with values given during the installation. You can modify these to change the configuration.
- Step 4** Define **Insight Local Database Settings**.
- These should be by default configured with values given during the installation (by running the config.sh script). You can modify these to change the configuration.
- Step 5** Define **SMTP Server Settings**.
- These are not set by default and are used by the application for sending E-Mail.
- Step 6** Define **Logging and monitoring Settings**.
- These are set by default and can be modified to specify the settings for logging and log expiration.
- Step 7** Define **Localization Settings**.
- These are set by default and can be modified to specify the application locale and time-zone.
-

Figure 3-1 Settings Management



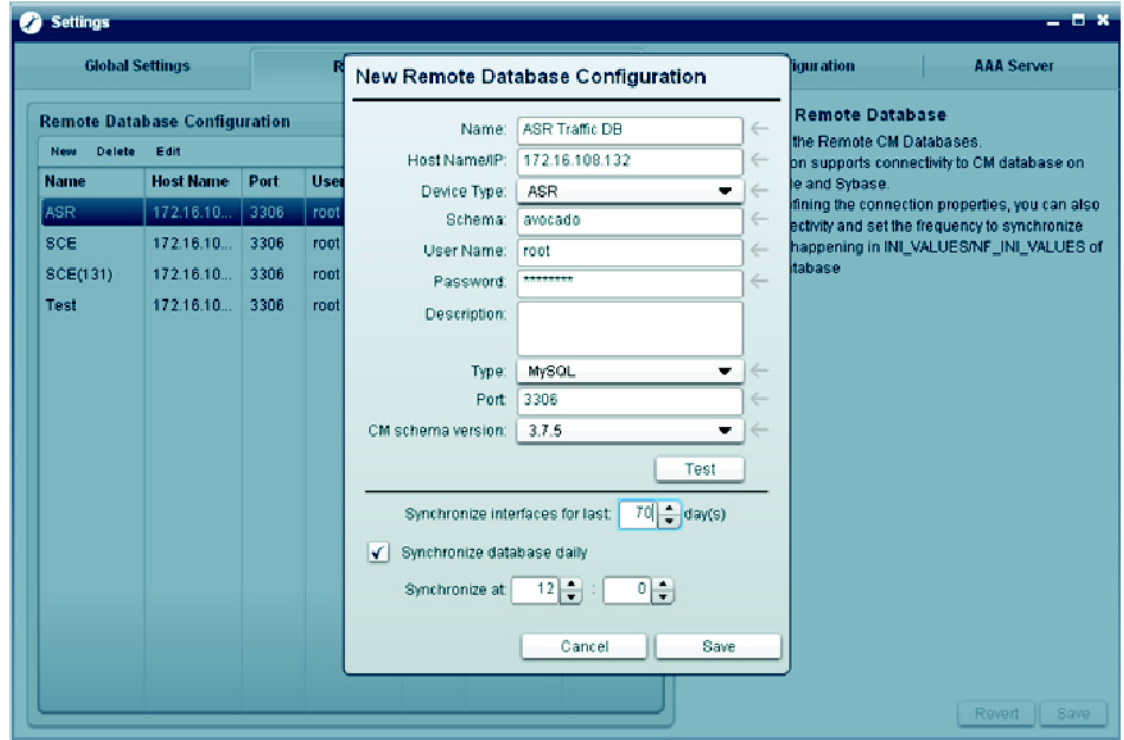
Configuring Traffic Databases and Devices

The Remote Database Configuration tab enables you to configure a connection to a Traffic database. You can check the database connectivity, retrieve device information from the INI_VALUES/NF_INI_VALUES tables, and set the frequency of the polling process.

To set up the traffic database connectivity parameters and Device configurations, perform the following steps:

- Step 1** Open the **Settings Management** from the Module Launcher. You see a similar page to that in [Figure 3-2 on page 3-3](#).
- Step 2** Go to the **Remote Database settings** Tab.
- Step 3** Create a new remote database setting with the connection parameter and other settings.
- Step 4** Save the **Remote DB configuration**.

Figure 3-2 Remote Database Configuration



Step 5 Go to **Device Configuration** Tab: Select the **traffic database** created in step 2-4 and click on either **Discover Devices** or click on **New** to create a new device.

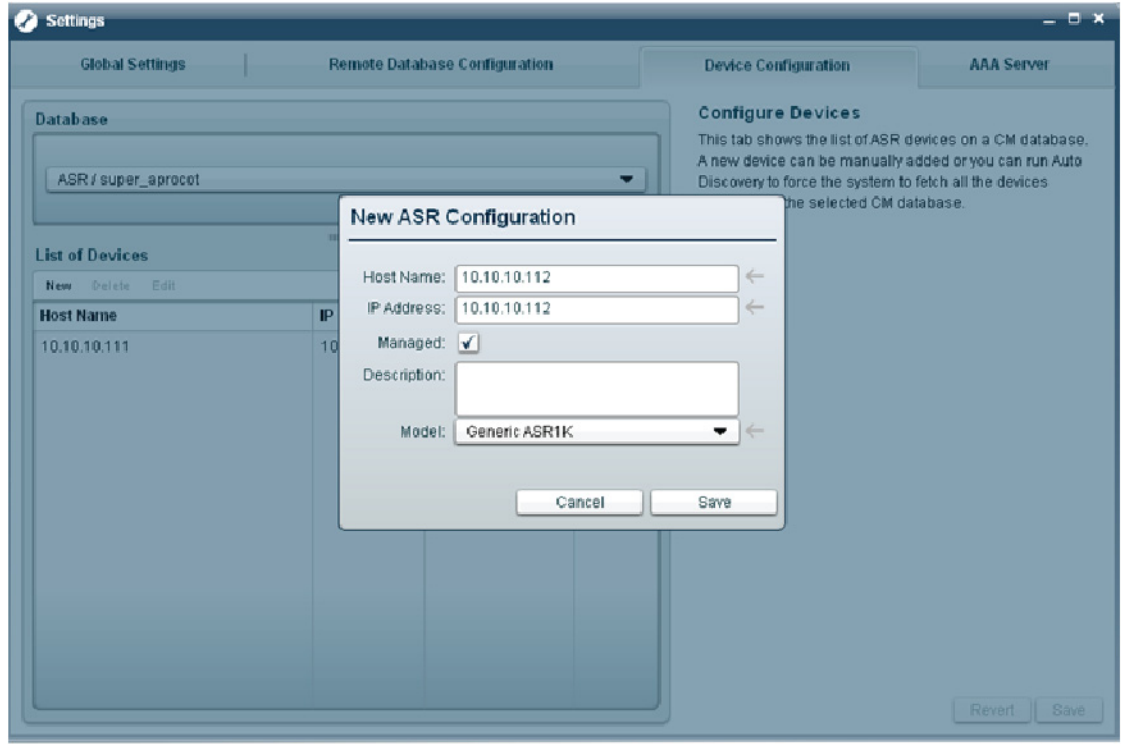
**Note**

The default names for the Collection Manager database schema are:

- *apricot* for SCE deployments
- *avocado* for ASR1K deployments

331008

Figure 3-3 Device Configuration

**Note**

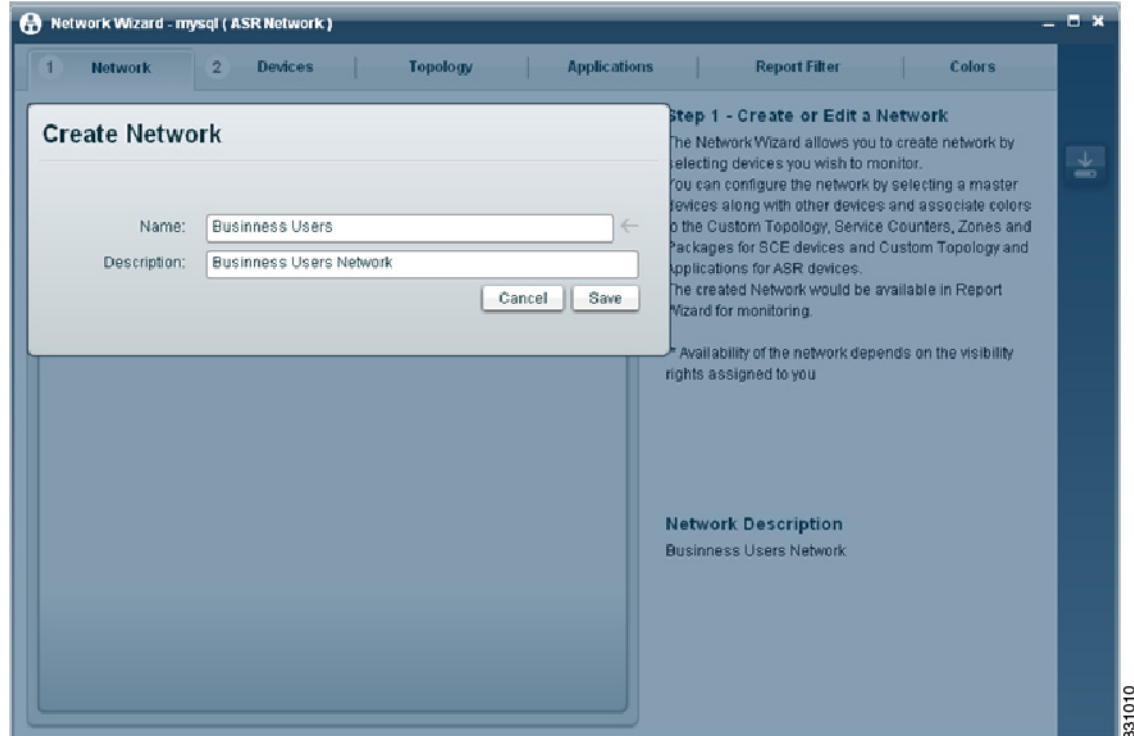
On "Discover Devices", all the devices present in the INI_VALUES/NF_INI_VALUES table of the selected traffic database would be fetched and stored locally in Cisco Insight Reporter. These devices can then be edited (to complete the information that was not populated by the Auto Discovery Process)

Configuring Network Topology

To configure the network topology on the Cisco Insight Reporter v3.1, perform the following steps:

- Step 1** Open the **Network Wizard** from the module launcher. You see a similar page to that in [Figure 3-4 on page 3-5](#)
- Step 2** Click on **New** to create a new network.
- Step 3** Enter the **network name** and description and click **Save**.

Figure 3-4 Creating a New Network



Step 4 Select a **traffic database** on the device tab.

Step 5 Select devices that will be part of the same network and define the Master device by clicking **Set as Master**.

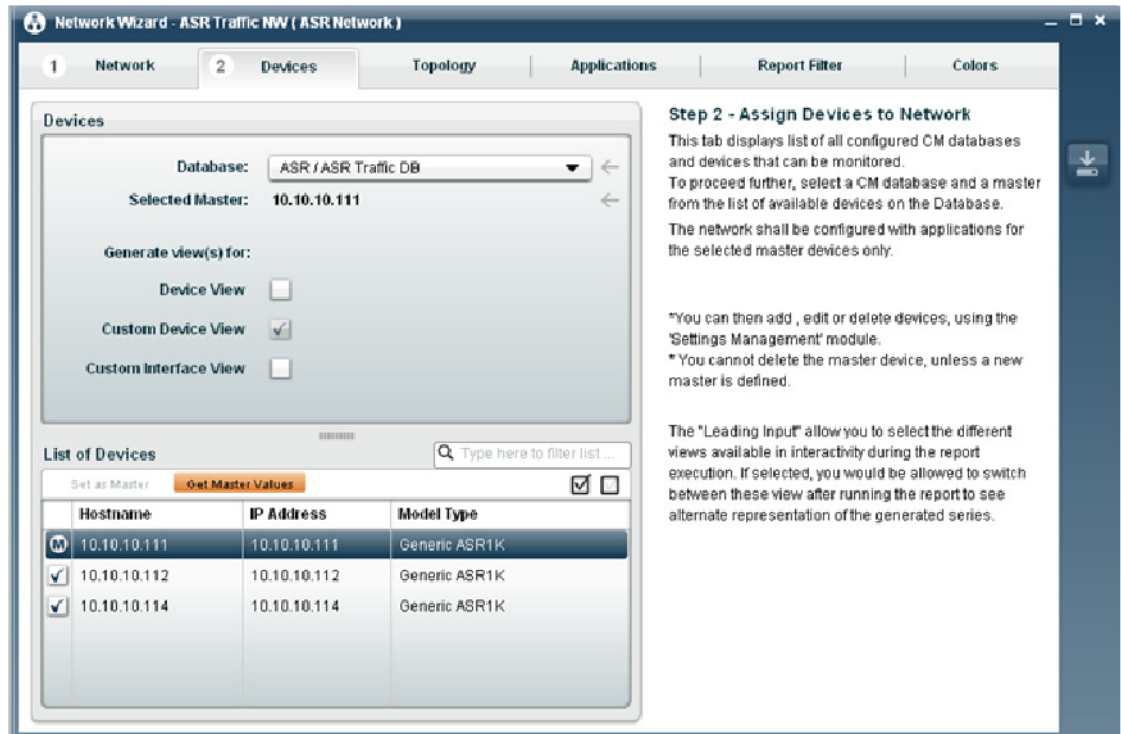


Note

On Cisco Insight Reporter, a network is a group of DPI devices of the same type (SCE or ASR1K) sharing the same configuration.

This means all devices belonging to the same network shall have the same configured services/applications, packages, protocols, counters, etc.

Figure 3-5 Select Master and Other Devices

**Note**

When a device is "Set As Master", the device configuration table (INI_VALUES or NF_INI_VALUES) on the traffic database is queried for the configuration information. All the other devices in this network shall have the same configuration as the Master device.

In order to create the network correctly, ensure that you select the device appropriately configured using SCABB Console application.

- Step 6** Go to **Topology** tab to define the **Custom Topology**. This is an optional step which lets you arrange the devices under custom grouping.
- Step 7** For SCE Networks, go to **Services** tab and define the **Custom Services Hierarchy**. This is an optional step which lets you arrange the Services under custom grouping.
- Step 8** Go to **Report Filter** tab and select the type of traffic records generated by the devices that you have selected for this network.

**Note**

The reports that you can run from Report Wizard depends on the filters selected here. So ensure that you choose only those filters for which the Collection Manager populates the traffic tables.

- Step 9** Go to **Colors** tab and to associate custom colors Custom Topology, Applications, for ASR networks and Services, Custom Topology, Packages and Zones for SCE Networks.
- Step 10** Click on the **Save** button to save the network.

Configuring Accounts

To create a user account, perform the following steps:

- Step 1** Log in into the application using the system defined Super User account.
- Step 2** Open the **Account Management** module from the module launcher. You see a similar page to that in [Figure 3-6 on page 3-7](#).
- Step 3** Go to the **Account** tab and enter all the details about the user. Assign appropriate role, account group, visibility rights, and the report groups.

Figure 3-6 *Creating a New Account*

- Step 4** Click on **Save** and **logout** from the application.
- Step 5** Authenticate the creation of the newly created account by logging in to the application using the credentials.

Running the First Report

To run the first report, perform the following steps:

-
- Step 1** Open the **Report wizard**.
 - Step 2** Select the network from the **Network** tab.
 - Step 3** Select the appropriate topic from the **Topic** tab.
 - Step 4** Configure a time interval on the **Date & Time** tab.
 - Step 5** Select the appropriate devices from the **Topology** tab.
 - Step 6** Select the services from the Services tab, in case of SCE network, or select the applications from the **Application** tab, in case of ASRIK network.
 - Step 7** Select additional parameters from the **Parameter** tab.
 - Step 8** Run the report.

**Note**

The Cisco Insight Reporter User Guide provides further information about the report template and the topics available in the Report Wizard. Please refer to it for a better description of reports.

The report is displayed.