



Release Notes for the Cisco Smart+Connected Residential Solution, Release 2.3

Revised: March 5, 2013
Part Number: OL-28504-02

This document provides important information for the Cisco Smart+Connected Residential Solution. Refer to the following topics for more information.

Contents

This document includes the following sections:

- [Contents, page 1](#)
- [New and Improved in This Release, page 2](#)
- [New and Updated Certified Drivers, page 8](#)
- [Questions about Release 2.3 and Earlier, page 10](#)
- [Requirements, page 11](#)
- [Validated Upgrade Paths for Release 2.3, page 12](#)
- [Obtaining and Installing Licenses, page 12](#)
- [Required Dealer and Residential \(Consumer\) Accounts, page 15](#)
- [Supported Cisco Devices, page 16](#)
- [Obtaining Supported Software, page 18](#)
- [Upgrading a Single System to Release 2.3, page 21](#)
- [Limitations and Workarounds: Release 2.3, page 24](#)
- [Localization Notes, page 24](#)
- [Related Documentation, page 24](#)



Americas Headquarters:
Cisco Systems, Inc., 170 West Tasman Drive, San Jose, CA 95134-1706 USA

New and Improved in This Release

Release 2.3 supersedes all previous updates and is recommended for new installations, as an upgrade for existing installations, or to resolve any problems with a previous release.

**Note**

Release 2.22 was the initial Cisco release of the Cisco Smart+Connected Residential Solution.

Release 2.3 includes additional refinements, including the following:

- [Intercom License, page 2](#)
- [Smart Device Management, page 2](#)
- [New Lighting Experience, page 3](#)
- [Advanced Lighting Scene Agent, page 4](#)
- [Panelized Lighting, page 4](#)
- [Access Agent, page 4](#)
- [Simple Device Discovery Protocol \(SDDP\), page 5](#)
- [Commercial and Residential Drivers, page 5](#)
- [What's Improved, page 6](#)

Intercom License

- Inter-dwelling license is automatically applied in Release 2.3. and higher.
- Video intercom is supported on the Cisco Portable Tablet, Cisco In-wall Displays and Cisco Video Door Stations. The intercom feature is not supported on televisions, PCs, or Apple iOS/Goggle Android smart devices.
- Release 2.3 includes supports Intercom communication within the residential dwelling only. In this release, the Intercom-enabled devices cannot connect or communicate with devices outside of the residence (such as other residences or common areas such as a lobby).
- Call groups for intercom broadcasts should not exceed 10 devices in any one call group. Call groups with more than 10 devices may experience inconsistent behavior with intercom broadcast calls.

Smart Device Management

Residents who have a *Cisco Smart+Connected Smart Device license* can easily add, delete or swap out their smart phones and tablets without assistance (they just need a license).

The release of the Cisco SC Residence App for iPhone®, iPad®, Android™ and PC/Mac allows residents to manage their devices. This update *replaces the existing driver addition and 'identify' process* that was previously required in Release 2.2. The update lets users add their own device to their system without assistance.

Residents can add the new device to their system using the credentials assigned to their Cisco Smart+Connected Residential Consumer account.

- **Existing Devices: Upgrade MyHome app**—Customers who already connect to a Cisco Smart+Connected Residential Solution using MyHome should uninstall any existing apps and install the Cisco SC Residence App. Users must then enter their Cisco Smart+Connected Residential Consumer account credentials.
- **New Devices: Add Cisco SC Residence App**—To connect a new device to the system, the user must have the following:
 - Release 2.3 or later.
 - Internet access to connect to the web-based licensing check.
 - Consumer account credentials. This is to confirm the user’s email address and password and determine authorized access, license availability, and controller name on the local network. **Note:** The user must use their primary account’s email address and password; not secondary user email addresses and passwords.
 - Wi-Fi connection on the same network as the Controller. After the resident’s Consumer account credentials are authorized, the device connects to the Controller. **Notes:** (1) The user must be on the same Wi-Fi network as the controller. (2) The above requirements handle the vast majority of customer installs.
- **Language support (iPad/iPhone/PC/Mac)**—This is a complete list of the supported languages:
 - English
 - Chinese (traditional)
 - Chinese (simplified)
 - Korean
- Release 2.3 supports smart device (and PC) communication within the residential network only (the smart device or PCs using the Cisco SC Residence App must be connected to the same residential network as the primary Cisco Controller). For example, the smart device must be connected to the same Wi-Fi SSID (network name) or have an Ethernet cable connected to the same residential switch as the primary Cisco Controller.
- The required Cisco Smart+Connected Smart Device license must be purchased and applied to the Consumer account for the residence. See the [“Validated Upgrade Paths for Release 2.3”](#) section on page 12 for more information.

New Lighting Experience

- [New UI, page 3](#)
- [Advanced Lighting Scene Agent, page 4](#)
- [Panelized Lighting, page 4](#)

New UI

A new, clean, intuitive UI for lighting is consistent across every device: TV screens, touchscreens, smart phones, and tablets. Now it’s easier and more intuitive to control lighting throughout their home or business.

- Fewer button clicks—see lights or lighting scenes on their own page—or all lights in one view
- More responsive to commands in the UI with enhanced animation
- Improved room filter for easier room navigation

Residents also have more control from a Cisco touchscreen or smart device.

- Customers can add, rename, or edit lighting scenes. Scenes must be deleted in Composer Pro.
- Change the brightness of certain lights while preserving the scene.
- Scene learning provides the ability to manually adjust lights throughout the house, and then save those settings into a lighting scene.

Advanced Lighting Scene Agent

The new Advanced Lighting Scene agent with enhanced features includes scene tracking, scene toggling, scene ramping/fading, delays, and multiple actions within scenes. This agent also gives you the power to design sophisticated lighting scenes in Composer Pro.

- Create up to 256 scenes.
- Toggle scenes with one button.
- Track lighting scenes: ON, OFF, % level and final state level.
- Edit and add new lighting scenes on touchscreens and Cisco SC Residence Apps.



Note

- Some features are currently only available with Panelized Lighting lights (not yet released).
- The Advanced Lighting agent MUST be added to the project first before the edit icon will appear on the Navigators to create and edit Lighting Scenes.
- The Advanced Lighting agent is supported on the Cisco In-wall Display and Cisco Portable Tablet.
- Advanced Lighting is not supported on the Cisco SC Residence App for iOS or Android devices or On-Screen (TV) Navigators.

Panelized Lighting

The new Panelized Lighting (to be released soon) has been added to Composer Pro for planning purposes in Release 2.3.

- **Drivers**—The Panelized Lighting drivers are included in Composer Pro. Although this product and training have not yet been released, you can add the drivers to your sample project and test how to design a system using the Panelized Lighting devices.
- **Reports**—Panelized Lighting reports have been added to Composer Pro in Tools. You can also test how reports are created for Panelized Lighting.
- **Light Properties Agent**—Added a new Light Properties agent to simplify initial setup of the basic properties for panelized lights.

Access Agent

A new Access agent has been added to Composer Pro with optional access-control settings on the Cisco In-wall Display and Cisco Portable Tablet touchscreens only. The Access Agent lets you restrict access to certain features and functions using 4-digit pin protection. Fully restrict access to certain areas of the navigation or hide those areas from view.

Ideal for:

- Business owners who have to worry about staff making unwanted changes
- Residents who want to restrict access for children or staff
- People with second homes where guests or renters might be interacting with the system
- Builders with model homes where certain functions need to remain off-limits

**Note**

-
- When elements are locked, a 4-digit pin code must be entered for access. In some cases, elements can be hidden from the user interface.
 - Supported on the Cisco In-wall Display and Cisco Portable Tablet.
 - Not supported on the Cisco SC Residence App for iOS or Android devices or On-Screen (TV) Navigators.
-

The following access control options are available. If locked, access requires a 4-digit code to unlock and use it.

- **Home**—Lock the Home button on the status bar.
- **Back Button**—Lock the Back button on the status bar.
- **Favorites**—Lock or hide the Favorites button on the status bar. If hidden, the button is invisible to the user.
- **Room Selector**—Lock or hide the Room Selector functionality on the status bar. If hidden, the button is invisible to the user.
- **Intercom**—Lock the Intercom button on the status bar.
- **More**—Lock the More button on the Home Screen.
- **Settings**—Lock the Settings button in the More screen.
- **Edit Lighting Scenes**—Lock or hide the Edit Lighting Scenes icon on the Lighting screens. If hidden, the edit icon is invisible to the user.

Simple Device Discovery Protocol (SDDP)

Did you ever have a problem finding the right driver for a piece of hardware? Release 2.3 now supports Simple Device Discovery Protocol (SDDP) which has the ability to greatly reduce the amount of time it takes to find and add drivers to a new or existing project.

With Release 2.3, Composer can automatically identify and load the correct device drivers for you. Compatible devices will be identified automatically in Composer, and they will remain in contact with the system regardless of IP address changes. All shipping Cisco Controllers and touchscreens support SDDP functionality when they are updated to Release 2.3, and more Cisco and third-party devices will be coming online soon to further expand the ecosystem of SDDP-enabled products.

Commercial and Residential Drivers

With nearly two dozen new drivers for residential and commercial applications, you have greater ability to integrate the Cisco Smart+Connected Residential Solution with third-party products.

- The Field Server driver allows management of a wide range of commercial HVAC systems to add climate control to automated business solutions.

- For international lighting projects, a driver for KNX systems which opens up a huge opportunity to integrate with a number of popular KNX solutions.
- Check out the other new drivers that are now available.

What's Improved

Release 2.3 includes the following performance and reliability improvements.

SR-250 System Remote Control

- Improved speed and reliability of button presses.
- Motion sensor responds when you pick it up and prevents device sleep during use.
- List Navigator redraws faster.

Audio and Video Intercom

- Calls stay online reliability.
- Touchscreens synchronization issues are resolved.
- Up to 30 video intercom devices can now be included in one call group (up from 8).

Updated Drivers

- Over 300 existing drivers have been updated to improve performance.
- Additional drivers are being released all the time.
- Additional performance issues were resolved with popular drivers (such as Extra Vegetables Drivers).

Performance Enhancements

- SNMP performance has been increased.
- Network communications can no longer block Director.
- Optimized Director “save state” functions to improve system performance.

Extensive Bug Fixes

- Security system status and reporting. Fixed some issues where security systems were not showing the correct status.
- Improved Controller reconnection logic with remote access.
- Improved scalability and capacity for accessing web services.
- Required re-identification after an update.
- Fixed the Update Manager window not reconnecting after the Primary Controller updates.
- Improved Announcement Agent set up and execution.
- Improved album art and movie metadata lookups using Gracenote®.

- Sony has improved zones control, improved IR learning, and more.
- Improved the SpeakerPoint™ update process to reduce a probability that they require a manual power cycle after an update.
- Fixed an issue where Not a Number (NAN) was showing up instead of a temperature.
- Fixed an issue where an update failure occurred and you had to re-identify before you were allowed to update.
- Composer and Director fixes:
 - **Bindings**—When working with bindings in Composer (Connections > Control/AV), the target binding options in the bottom window will retain their current view as long as the installer continues to work with the same type of input bindings. This is particularly helpful when configuring the button-link bindings for lights and the AV bindings for AV switches and receivers.
 - **Composer 2.3**—Automatically uninstalls when installing a new build of the same version.
 - **Crashes**—Fixed some Composer crash issues.
 - **Lookup**—Corrected a problem with the lookup and entry of Latitude and Longitude values using the Lookup interface for users whose Windows Format settings are configured in a region that uses the comma (,) rather than the period (.) in the Latitude/Longitude values.
 - **SNMP**—Fixed an issue where SNMP was consuming too much CPU on the Director process.
 - **Time/Date**—Added a notification to check system date/time settings when Composer is unable to make an SSL connection to Director.
- Blinds are updated to support additional third-party blinds, including Somfy and Mecho Shades with the V1 and V2 blinds proxy on iPad and iPhone devices. The Navigator also shows the state of a blind (open/closed) as a toggle.
- Fixed several issues related to bookmarks (Favorites).
- Made multiple improvements to improve Intercom audio and video stability after Release 2.2.2 and Release 2.2.4.
- Fixed several On-Screen Navigator focus defects.
- Fixed some issues regarding Internet radio fluctuations.
- Fixed an issue where SpeakerPoint devices required a reboot after an update.
- Fixed some issues where the Zones page was not populating correctly.
- Made extensive improvements to the whole system.

New and Updated Certified Drivers

The following list provides new and updated drivers for Release 2.3.

- [New Drivers, page 8](#)
- [Updated Drivers, page 9](#)

New Drivers

Table 1 *New Drivers*

Company Name/Driver Name	Driver Name	Driver Name
Aprilair 8800 Thermostat		
BPL	BPL IQ 3 Button Keypad	BPL IQ Dimmer
	BPL IQ Door Sensor	BPL IQ Gateway
	BPL IQ Geyser Controller	BPL IQ LPG Sensor
	BPL IQ LPG Valve Controller	BPL IQ Motion Sensor
Denon	AVR-3313CI Receiver	AVR-2313CI Receiver
	AVR-2113CI Receiver	AVR-1713 Receiver
	Blu-Ray DBT-3313UD	
Diamond Design Media Server		
Dune Media Player		
Electronic Solutions Shades		
Eragy Energy Manager		
HydraConnect HSS-1 HDMI Switch		
Somfy	Somfy Glydea Shades	Somfy ILT-ST30 Shades
Sony	DA-5800ES Receiver	DA-2800ES Receiver
	DA-1800ES Receiver	Sony TV XBR-84X900
	Sony Projector VPL-VW1000ES	
Leaf	LTHDMI44 HDMI Switch	LTHDMI66 HDMI Switch
	LTHDMI88 HDMI Switch	
Marantz	SR7007 Receiver	SR6007 Receiver
	SR5007 Receiver	NR1603 Receiver
	Blu-ray UD7007	
Nyce	Nyce Keyfobs	Nyce Motion Sensor NCZ-3041
Sharp Projector Sharp XV-Z30000		
Snap AV	SnapAV Wirepath DVR	Binary B-100-300 4x4 HDMI Switch

Table 1 *New Drivers (continued)*

	Binary B-100-300 8x8 HDMI Switch	
Toshiba	42L6200U TV	47L6200U TV
	47L7200U TV	55L6200U TV
	55LL7200U TV	
Yamaha	RX-A3020 Receiver	RX-A2020 Receiver
	RX-A1020 Receiver	RX-A820 Receiver
	RX-A720 Receiver	
Zektor HD-800 HDMI Switch		

Updated Drivers

Table 2 *Updated Drivers*

Company Name/Driver Name	Driver Name	Driver Name
Integra	DTR-80.2 AVR	DTR-70.2 AVR
	DTR-50.2 AVR	DHC-40.2 AVR
	DTR-40.2 AVR	DTR-30.2 AVR
	DTR-20.2 AVR	DHC-80.1 AVR
	DTR-80.1 AVR	DTR-50.1 AVR
	DTR 70.1 AVR	DHC-40.1 AVR
	DTR-40.1 AVR	DTR-20.1 AVR
	DTR-30.1 AVR	
Nyce Contact Switch NCZ-3011		
Onkyo	PR-SC5507 AVR	PR-SC5508 AVR
	TX-NR5007 AVR	TX-NR1008 AVR
	TX-NR1007 AVR	TX-NR3007 AVR
	TX-NR3008 AVR	TX-NR808 AVR
	TX-NR807 AVR	TX-SR707 AVR
Sony	STR-DA5600ES Receiver	STR-DA4600ES Receiver
	STR-DA3600ES Receiver	STR-DA5700ES Receiver
	STR-DA5500ES Receiver	STR-DA3700ES Receiver
	STR-DN2010 Receiver	
Sony 7000 Disc Changer		
Yamaha RX-A1000		
Yale		

Questions about Release 2.3 and Earlier

Here are some common questions related to Release 2.3.

Do I Need to Update Systems to Release 2.3?

Yes. All Cisco Smart+Connected Residential Solutions should be updated to this latest release, which is the supported release and includes numerous feature and performance updates.

We recommend that installers first familiarize themselves with Release 2.3 in a test systems.

Which Version(s) of Composer Do I Need for Release 2.3?

Composer 2.2 is required to install and update systems to Release 2.3. It is not backwards compatible with prior versions of system software. If you are making changes to a prior version before this update, please use the corresponding Composer version based on the installed system version.

Using Composer 2.3, you can connect to a system running a previous version of software, but you should not modify the system.

You can have multiple versions of Composer installed on the same computer at the same time. If you have customers running prior versions of software on their systems, the corresponding versions of Composer must be used for maintenance and configuration work for those systems:

- Use Composer 2.3.0 for any Release 2.3.x system changes
- Use Composer 2.2.x for any Release 2.2.x system changes

Can I Continue to Install Prior Release Systems?

Cisco may ship hardware with previous versions of the OS pre-installed. You may certainly install these systems using the bundled OS version. However, because of the significant improvements with this release, we recommend that the system be upgraded to Release 2.3 before turning the system over to your customer. This is the most current and the best-supported OS for Cisco systems.

What Performance Changes Should I Expect from Release 2.3?

Running Release 2.3 on Cisco Smart+Connected Controller 800 and Controller 250 results in the best performance in single-controller environments. Older controllers, including Controller 200 support Release 2.3 and gain enhanced stability in projects with a single controller. **Note:** Overall performance on older hardware will be similar to previous 2.X Release releases. Please use the performance calculators to estimate needs for Navigators, ZigBee Server, ZAP, and Director.

We recommend that you evaluate performance capacity using *Balancing Size and System Usage Requirements* and *System Size Usage Modeling – Performance Calculator* technical articles on the Knowledgebase before installing or updating any single-controller system.

Requirements

Complete the following basic requirements design, configure, install, and deploy a Cisco Smart+Connected Residential Solution.

Table 1-3 **Requirements**

Requirements	Related Documentation	Requirement Complete? (✓)
Gain a solid understanding of the Cisco Smart+Connected Residential Solution, including supported devices, software tools, and remote management	<ul style="list-style-type: none"> • Complete the Cisco Smart+Connected Residential training. • Solution overview, case studies, and other information: www.cisco.com/go/smartconnectedresidential • Data Sheets • Study the documents in the “Related Documentation” section on page 24. 	<input type="checkbox"/>
Review the safety and regulatory information for the Cisco Smart+Connected Residential Solution, and the local regulations, codes and other requirements for the installation site.	Regulatory Compliance and Safety Information for Cisco Smart+Connected Residential Products	<input type="checkbox"/>
Review all sections of the installation and configuration guide, which includes summary design instructions and additional requirements.	Cisco Smart+Connected Residential Installation and Configuration Guide	<input type="checkbox"/>
A Windows PC to run design and installation software such as Microsoft Visio and Composer Pro.	Cisco Smart+Connected Residential Installation and Configuration Guide	<input type="checkbox"/>
Internet access and a wireless router and network switch for each residence.	Cisco Smart+Connected Residential Installation and Configuration Guide	<input type="checkbox"/>
The Cisco and third-party devices required to support your solution design.	<ul style="list-style-type: none"> • Cisco Smart+Connected Residential Installation and Configuration Guide • Related Documentation, page 24 • The third party product documentation. 	<input type="checkbox"/>

Table 1-3 Requirements (continued)

Requirements	Related Documentation	Requirement Complete? (✓)
The electrical, network, serial, and other cables required to implement the solution in each dwelling.	See your real estate developer for the specific requirements for each new or retrofit residence.	<input type="checkbox"/>
Review the additional requirements in the Cisco Smart+Connected Residential Installation and Configuration Guide for more information. For example: <ul style="list-style-type: none"> • Network Requirements • Design and Estimate Requirements • Installation Requirements • Template Configuration Requirements 	Cisco Smart+Connected Residential Installation and Configuration Guide	<input type="checkbox"/>

Validated Upgrade Paths for Release 2.3

Primary Controller/System Upgrades

Only systems running Release 2.2 or later can be directly updated to Release 2.3 and later.

Secondary Device Upgrades

Secondary Controllers (Release 2.2.x or later) can be updated directly to any upstream version as long as they're added to a project with a Primary Controller that is running the correct version.

Obtaining and Installing Licenses

Cisco licenses must be purchased to enable optional features such as smart device access and the Cisco Smart+Connected Remote Management Solution.



Tip

Refer to the *Cisco Smart+Connected Residential Licensing and Registration Guide* for more information.

Procedure

Step 1

Purchase the license:

- a. Determine the part numbers for the license you want to purchase (see the [“License Part Numbers” section on page 13](#)).

- b. Go to <http://www.cisco.com/en/US/ordering/index.shtml>.
- c. Select the Product Authorization Key (PAK) for the license and delivery method (paper or eDelivery).
- d. Select one or more licenses for the PAK.
For example, select either RMS Server or Client (or both) or Smart Device Subscription or Perpetual or both.
- e. When the purchase is complete, you are issued a Product Authorization Key (PAK) in paper form, or as an e-Delivery in an email message.

Step 2 Submit the PAK to generate the license(s):

- a. In a Web browser, open the Cisco Product License Registration Web page <http://www.cisco.com/go/license/>.
- b. Follow the on-screen instructions to complete the form and enter the Product Authorization Key (PAK).

Step 3 Access the licenses in one of the following ways:

- **Cisco RMS:** the server and client license is sent as a single license file to your email address. The license file must be installed on the RMS server as described in the [Cisco Smart+Connected Remote Management Server Installation Guide](#).
- **Smart Device Licenses:** Wait for the licenses to be added to your dealer account, and then apply the licenses to individual Consumer accounts. See the *Cisco Smart+Connected Residential Licensing and Registration Guide* for instructions and more information.

License Part Numbers

All licenses are delivered electronically.

- Smart device licenses are added to the dealer portal where they can be assigned to consumer accounts.
 - See the *Cisco Smart+Connected Residential Licensing and Registration Guide* for instructions.
- The Cisco RMS license is installed on the Cisco RMS Server.
 - See the [Cisco Smart+Connected Remote Management Server Installation Guide](#) for instructions to install the license.
 - See the *Cisco Smart+Connected Residential Licensing and Registration Guide* for more information about license requirements.

Cisco Smart+Connected Remote Management Solution Licenses

Paper Licenses

Table 4 Cisco RMS Server and Client Licenses (Paper Licenses)

Product Number	Description
SCH-RMS-PAK=	Product Activation Key, Smart+Connected RMS - Paper License. Note When ordering a paper license, the SCH-RMS-PAK= must be selected.
SCH-RMS-SSW-LIC	Cisco Smart+Connected Remote Management Server License
SCH-RMS-CL-LIC	Cisco Smart+Connected Remote Management Client License

e-Delivery Licenses

Table 5 Cisco RMS Server and Client Licenses (e-Delivery Licenses)

Product Number	Description
L-SCH-RMS-PAK=	Product Activation Key for Smart+Connected RMS, e-Delivery License. Note When ordering an e-Delivery license, the L-SCH-RMS-PAK= must be selected.
L-SCH-RMS-SSW-LIC	Cisco Smart+Connected Remote Management Server License
L-SCH-RMS-CL-LIC	Cisco Smart+Connected Remote Management Client License

Cisco Smart+Connected Smart Device Licenses

Paper Licenses

Table 6 Cisco Smart+Connected Smart Device License (Paper Licenses)

Product Number	Description
SCH-SMRTD-PAK=	Product Activation Key for Smart+Connected Smart Device, Paper License Note When ordering a paper license, the SCH-SMRTD-PAK= must be selected.
SCH-SMRTDS-LIC	Cisco Smart+Connected Smart Device Dwelling Subscription License
SCH-SMRTD-LIC	Cisco Smart+Connected Smart Device Dwelling Perpetual License

e-Delivery Licenses**Table 7** *Cisco Smart+Connected Smart Device License (e-Delivery Licenses)*

Product Number	Description
L-SCH-SMRTD-PAK=	Product Activation Key for Smart+Connected Smart Device, e-Delivery License. Note When ordering an e-Delivery license, the L-SCH-SMRTD-PAK= must be selected.
L-SCH-SMRTDS-LIC	Cisco Smart+Connected Smart Device Dwelling Subscription License
L-SCH-SMRTD-LIC	Cisco Smart+Connected Smart Device Dwelling Perpetual License

Required Dealer and Residential (Consumer) Accounts

The following accounts are required to install and deploy a Cisco Smart+Connected Residential Solution:

- **Dealer Account**—Provides your organization access to the Dealer Portal used to create additional installer accounts, manage access to the Composer Pro software, create individual user (Consumer) accounts, assign optional licenses to each residence, and perform additional account management tasks.
- **Consumer Account**—The Cisco Partner creates a Consumer account for each primary Cisco Controller (one for each residence). This Consumer account is used to register the primary Cisco Controller, which enables Cisco Controller upgrades and optional feature licenses. The credentials for this account are also used by the resident (end-user) to log into their residential system using a smart device or PC (when connected to the residential network).

Supported Cisco Devices

The Cisco Smart+Connected Residential Solution supports the following hardware and software Cisco components:

- [Hardware Components, page 16](#)
- [Additional Components, page 17](#)

Hardware Components

The following Cisco hardware products are supported in Release 2.3.



Note

A deployed Cisco Smart+Connected Residential Solution includes additional Cisco and third-party devices and software. Refer to the device documentation for more information and see the [“Related Documentation”](#) section on page 24.

Table 8 **Supported Hardware**

Product	Part Number
Cisco Controllers	
Cisco Smart+Connected Controller 200	SCH-CONTROL-200
Cisco Smart+Connected Controller 250	SCH-CONTROL-250
Cisco Smart+Connected Controller 800	SCH-CONTROL-800
Rack-Mount Kit for Controller 800	SCH-RCKMNT-HC800
Cisco Touchscreens	
Cisco Smart+Connected 7" In-wall Display	SCH-7IN-TS (-W and -B)
Cisco Smart+Connected In-wall Back Box, New Construction	SCH-NEWBB-XXX (-PLS for Plastic or -MET for Metal)
Cisco Smart+Connected In-wall Back Box, Retrofit	SCH-RTRBB-XXX (-PLS for Plastic or -MET for Metal)
Cisco Smart+Connected Portable Tablet	SCH-TABLET
Cisco Video Door Stations	
Cisco Smart+Connected Video Door Station External	SCH-VDS-E
Cisco Smart+Connected Video Door Station Internal	SCH-VDS-I
Cisco Smart+Connected 26-cm External Wi-Fi Antenna for VDS	SCH-VDS-WIFI-26CM
Cisco Smart+Connected 3m External Wi-Fi Antenna for VDS	SCH-VDS-WIFI-3M
Cisco Smart+Connected Video Door Station Back Box	SCH-VDS-BB

Table 8 *Supported Hardware (continued)*

Product	Part Number
Cisco I/O Extender	
Cisco Smart+Connected I/O Extender	SCH-IO-EXT-8
Cisco Universal Remotes	
Cisco Smart+Connected Universal Remote 150	SCH-REMOTE-150
Cisco Smart+Connected Universal Remote 250	SCH-REMOTE-250

Additional Components

The Cisco Smart+Connected Residential Solution also supports the following features.

Table 9 *Additional Components*

Component	Description and Requirements
Cisco Smart+Connected Remote Management Solution <ul style="list-style-type: none"> – Cisco Smart+Connected Remote Management Server – Cisco Smart+Connected Remote Management Console 	Requires the following: <ul style="list-style-type: none"> • Cisco RMS Server software and license. • Cisco RMS client license for each primary Cisco Controller. See the following for more information: <ul style="list-style-type: none"> • Downloading the Cisco RMS Server Software, page 19 • Obtaining and Installing Licenses, page 12
Cisco SC Residence App	Provides access to end-user smart devices and PCs. See the “Smart Device Management” section on page 2 . Requires the Cisco Smart+Connected Smart Device License. See the Obtaining and Installing Licenses, page 12 .

Obtaining Supported Software

Complete the following procedure to obtain software and other information for the following Cisco Smart+Connected Residential Solution products and components:

- [Composer Pro Configuration Software, page 18](#)
- [Smart Device and PC Navigator Apps, page 18](#)
- [Downloading the Cisco RMS Server Software, page 19](#)
- [Accessing Development and Customization Software, page 20](#)
- [Upgrading the Controller and Device Firmware, page 21](#)

Composer Pro Configuration Software

Use the Composer Pro configuration tool to define the devices and features in a Cisco Smart+Connected residence. See the [Cisco Smart+Connected Residential Installation and Configuration Guide](#) for instructions to install, register, and use Composer Pro.

Click one of the following links to access the relevant release for your system:

- [Composer Pro 2.2.2](#)
- [Composer Pro 2.3.0](#)

**Note**

See “Which Version(s) of Composer Do I Need for Release 2.3?” section on page 10 for more information.

Smart Device and PC Navigator Apps

The Cisco SC Residence App lets you control your home system with an easy-to-use interface using virtually any smart device or PC. Control your lights, thermostats, audio, video, web cameras, security system and much more with the touch of your finger tip.

- Smart Device access requires a Cisco Smart+Connected Smart Device license. See the “[Obtaining and Installing Licenses](#)” section on page 12 for more information.
- The PC or smart device must be on the same home network as the Cisco Smart+Connected Residential Solution.

The following applications are used to access the Navigator user interface for a Cisco Smart+Connected residence using a PC or smart device.

Table 10 Smart Device Apps

Platform	Download Instructions
<p>MyHomePC application</p> <p>This app runs the Navigator on a PC, allowing residents to access the Cisco Smart+Connected Residential Solution from a laptop or desktop computer.</p>	<ol style="list-style-type: none"> 1. Install the Adobe Air utility. This application allows you to run MyHomePC on a Windows, MacOS or Linux PC. <ol style="list-style-type: none"> a. Go to get.adobe.com/air/. b. Follow the on-screen instructions to download and run the installer file. <p>Note Do not install Adobe Air updates after upgrading to Release 2.3, even if prompted to do so. This is an error from Adobe Air. Updating Adobe Air after you've installed Release 2.3 will make the Cisco SC Residence App non-functional.</p> <ol style="list-style-type: none"> 2. Install the MyHomePC app. <ol style="list-style-type: none"> a. Go to http://update.control4.com/cisco/2.3.0.212106-cis/win/MyHomePC.air b. Follow the on-screen instructions to download the <code>MyHomePC.air</code> installer file. c. Locate and double-click the <code>MyHomePC.air</code> file on your PC. d. Follow the on-screen instructions to install the application.
<p>Cisco SC Residence App</p> <p>Run Navigator from a iOS or Android smart device, such as a phone or tablet.</p>	<ol style="list-style-type: none"> 1. Go to one of the following app portals: <ul style="list-style-type: none"> – Apple products: iTunes – Android products: Google Play. 2. Search for the Cisco SC Residence App. 3. Follow the instructions to install the app.

Downloading the Cisco RMS Server Software

The Cisco RMS Server software is installed on a physical or virtual server to enable remote deployment and administration of multiple Cisco Smart+Connected Residential systems.

Procedure

To install the software, so the following:

-
- Step 1** Purchase the following licenses:
- One Cisco RMS Server licence for each server instance (physical or virtual).
 - One Cisco RMS client license for each primary Controller.
- See the “[Validated Upgrade Paths for Release 2.3](#)” section on page 12 for information.
- Step 2** Download the Cisco RMS Server installation package from the following link.
http://update.control4.com/patches/rms_install/rms_install.zip
- Step 3** Install the Cisco RMS Server software and license.
See the [Cisco Smart+Connected Remote Management Server Installation Guide](#) for instructions.
-

Accessing Development and Customization Software

To access software development kits (SDKs) and other customization tools, you (or your organization) must be a member of the Cisco Developer Network (CDN). Contact your Cisco representative for more information about becoming a Cisco partner, and to gain access to the CDN website.

Procedure

- Step 1** Complete the Cisco Developer Network (CDN) as instructed by your Cisco representative.
- Step 2** Open a web browser and go to: <http://developer.cisco.com/web/as/start>.
- Step 3** Click the license agreement link to accept license agreement.
- Step 4** Log in when prompted.
- Step 5** Click **I Agree** at the bottom of each page of the license agreement.
- Step 6** Click one of the following links to access the development software packages.

Table 11 Development Software available on the Cisco CDN Website

Software	Description
Application Development Kit	<p>Allows developers to build consumer facing applications that can be downloaded from the 4Store app store for use on the Cisco touchscreens.</p> <p>Applications are based on Adobe Flash ActionScript 2.0 and require programming skills. A 4Store account and \$99 annual fee is also required.</p> <ol style="list-style-type: none"> 1. Go to www.4store.com/developer/portal. 2. Read the FAQs. 3. Click Create My New Account. 4. Follow the on-screen instructions to pay the \$99 / year fee, accept the terms and conditions, and access the developer information and tools. <p>Note Residents set up a 4Store account online at www.4store.com and then purchase and download 4Store applications from a variety of categories.</p>
Navigator SDK	<p>A Flash-based software development kit (SDK) to further the integration of third-party devices by adding the flexibility to design and integrate an interface to the control capabilities that is unique to the device and is delivered directly via the Navigator user interface (UI).</p> <p>Third-party companies can create applications that provide information to the customer, ranging from local weather and traffic reports to RSS Feeds. Installers can easily download applications that have been developed by third parties.</p>
DriverWorks SDK	<p>Create two-way drivers for audio video (AV) and non-AV devices that are controlled using a serial or TCP/IP connection. DriverWorks drivers can be written and installed without requiring platform- and version-specific compiling. Using DriverWorks does require some programming skills, but this tool leverages the Lua-embeddable scripting language, which is powerful, fast, and light-weight language (when compared to other scripting languages).</p> <p>For information on using DriverWorks, refer to the “Getting Started with DriverWorks” documentation included with the SDK download.</p>
Language Development Kit	Create new languages for the Navigator user interface.

Table 11 Development Software available on the Cisco CDN Website (continued)

Software	Description
Theme SDK	<p>Custom theme development.</p> <p>Themes define the layout and graphics (look and feel) for the Navigator user interface that appears on a TV, touchscreen, PC or smart device. A Default theme is used and users can purchase and download additional themes from www.4store.com.</p> <p>The Theme SDK allows developers to create new themes.</p>

Upgrading the Controller and Device Firmware

The Cisco Controller firmware (and firmware for other supported devices) contains the latest features, drivers and other improvements for the Cisco Controller and all supported devices included in the Composer Pro project.

To upgrade, use one of the following methods:

- To upgrade a single system, see the “[Upgrading a Single System to Release 2.3](#)” section on page 21.
- To upgrade multiple systems using Cisco RMS, see [Cisco Smart+Connected Remote Management Console Administration Guide](#).

Both methods use the following URL to download and install the updates:

http://services.control4.com/Updates-cisco/v2_0/Updates.asmx

Upgrading a Single System to Release 2.3

Complete the following procedure to upgrade a single Cisco Controller (and other supported devices in the project).



Note

To upgrade multiple systems using Cisco RMS, see [Cisco Smart+Connected Remote Management Console Administration Guide](#).

Procedure

- Step 1** Download and install the latest version of the Composer Pro configuration software.
See the following for more information:
- [Composer Pro Configuration Software](#), page 18.
 - [Cisco Smart+Connected Residential Installation and Configuration Guide](#)
- Step 2** Launch Composer Pro and choose the Cisco Controller.
- a. Choose **Start > All Programs > Control4 > Composer 2.2.x**. (or higher)

- b. If prompted, enter your dealer credentials (username and password) to register or renew your Composer license.
- c. Select “**Director on Local Network**”.
- d. Highlight the Cisco Controller name (or IP address) and click **Connect**.



Note If the Cisco Controller does not appear in the list, review the instructions in the [Cisco Smart+Connected Residential Installation and Configuration Guide](#).

- e. Click **Yes** to add the Cisco Controller to your list of trusted devices.
This step is only necessary the first time you connect your PC to a Cisco Controller.
- f. If prompted to update the device software, click **OK**.



Tip We recommend that you do not perform the upgrade until all devices have been identified in the project (see [Step 3](#)). This will cause all devices to be upgraded at the same time. If you upgrade the Cisco Controller before the other network devices are added and identified, each device will automatically upgrade when identified the device will be unresponsive during the upgrade process.

Step 3 Verify that the project for the Cisco Controller is complete, and that all IP and ZigBee devices are identified.

See the [Cisco Smart+Connected Residential Installation and Configuration Guide](#) for instructions.

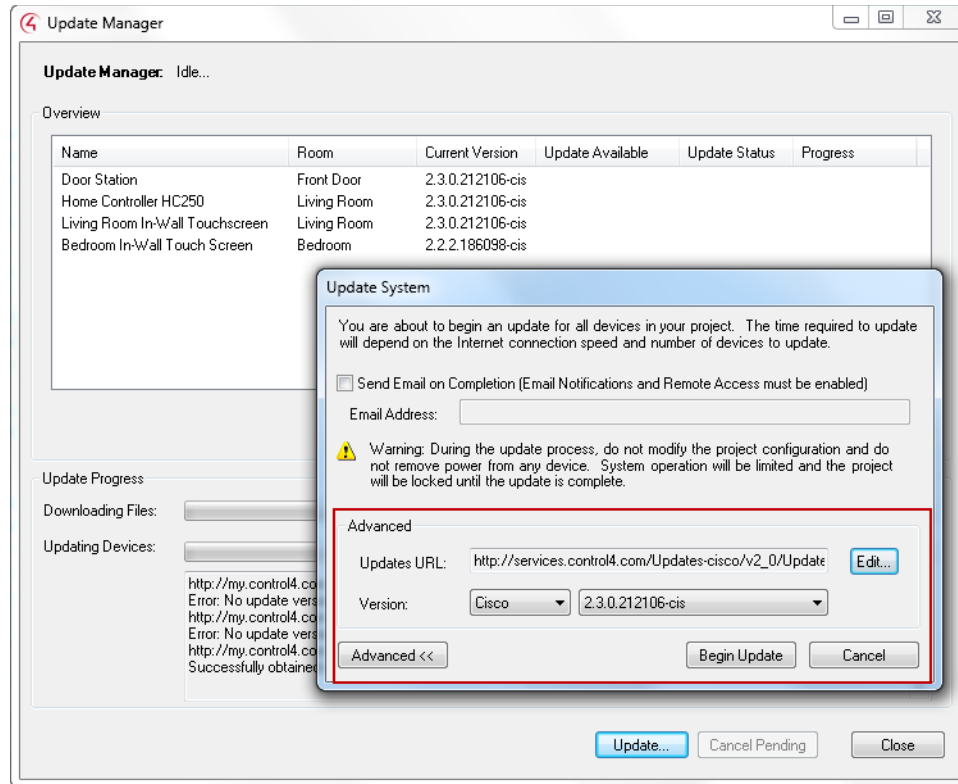
Step 4 Manually trigger the device software update.



Tip We recommend performing the update after all devices have been identified in the project. This causes all devices to be upgraded at the same time. If you upgrade the Cisco Controller before the other network devices are added and identified, then each device will automatically upgrade when it comes online and the device may be unresponsive during the upgrade process.

- a. Select the menu **Tools > Update Manager**.
- b. Click **Update**.
- c. Click **Advanced** ([Figure 1-1](#)).

Figure 1-1 Updating the Device Software



- d. Click **Edit**.
- e. Enter the following URL (or verify that it was previously changed):
http://services.control4.com/Updates-cisco/v2_0/Updates.asmx
- f. Click **OK**.
- g. Verify that the version is “Cisco”, and select a version number, if necessary.



Note If the URL is incorrect, the version selections will be blank. You must verify that “Cisco” and a version number appears (Figure 1-1). Failure to update this URL correctly can cause an incorrect software release to load, and the loss of supported services.

- h. Click **Begin Update**.
- i. Follow the on-screen prompts to update all identified devices.

Limitations and Workarounds: Release 2.3

Cisco SC Residence App

- **App updates for Android and iOS**—Cisco SC Residence App users must update their Android and iOS apps after the system has been updated to Release 2.3. Otherwise, the app will not work. If you have already updated your system to Release 2.3.0, the apps will work.
- **Adobe Air updates**—Do not install Adobe Air updates for Cisco SC Residence App after upgrading to Release 2.3, even if prompted to do so. This is an error from Adobe Air. Updating Adobe Air after you’ve installed Release 2.3 will make the Cisco SC Residence App non-functional.

Localization Notes

End-user localization may not be complete in the following features and applications.

- The Cisco Universal Remote 250 does not support double byte characters required to display Asian character sets.
- Several areas of the Cisco SC Residence App that are not localized are scheduled to be updated in future releases.
- The Navigator user interface is available in English only, but is scheduled to be updated in future releases.

Related Documentation

For more information about the Cisco Smart+Connected Residential products, see the following documents and websites:

Subject / Document Title	Location
General	
Product Information and Home Page	www.cisco.com/go/smartconnectedresidential
Cisco 1-Year Limited Hardware Warranty Terms	www.cisco.com/go/smartconnectedresidential/warranty
Regulatory Compliance and Safety Information for Cisco Smart+Connected Residential Products	www.cisco.com/go/smartconnectedresidential/docs
Cisco Support	www.cisco.com/cisco/web/support/
Technical Documentaion	

<p>Installation and Configuration Cisco Smart+Connected Residential Installation and Configuration Guide</p> <p>Cisco RMS Installation and Administration Cisco Smart+Connected Remote Management Console Administration Guide Cisco Smart+Connected Remote Management Server Installation Guide</p> <p>Reference Guides Cisco Smart+Connected Controller 200 Reference Guide Cisco Smart+Connected Controller 250 Reference Guide Cisco Smart+Connected Controller 800 Reference Guide Cisco Smart+Connected 7" In-wall Display Reference Guide Cisco Smart+Connected Portable Tablet Reference Guide Cisco Smart+Connected I/O Extender Reference Guide Cisco Smart+Connected Universal Remote 150 Reference Guide Cisco Smart+Connected Universal Remote 250 Reference Guide Cisco Smart+Connected Video Door Station Reference Guide</p>	<p>www.cisco.com/go/smartconnectedresidential/docs</p>
<p>Cisco Smart+Connected Residential Licensing and Registration Guide</p>	<p>See your Cisco representative or partner for more information.</p>
<p>Smart Device Compatibility and other information: Cisco Smart+Connected Smart Device License for Real Estate Developers</p>	<p>www.cisco.com/go/smartconnectedresidential</p>
<p>Composer Pro User Guide</p>	<p>http://www.control4.com/documentation/Composer_Pro_User_Guide/index.htm</p>

Cisco and the Cisco logo are trademarks or registered trademarks of Cisco and/or its affiliates in the U.S. and other countries. To view a list of Cisco trademarks, go to this URL: www.cisco.com/go/trademarks. Third-party trademarks mentioned are the property of their respective owners. The use of the word partner does not imply a partnership relationship between Cisco and any other company. (1110R)

Any Internet Protocol (IP) addresses and phone numbers used in this document are not intended to be actual addresses and phone numbers. Any examples, command display output, network topology diagrams, and other figures included in the document are shown for illustrative purposes only. Any use of actual IP addresses or phone numbers in illustrative content is unintentional and coincidental.

© 2013 Cisco Systems, Inc. All rights reserved.

