



# CHAPTER 15

## Configuring the Network Analysis Module

---

This chapter provides information about the integration of the Cisco Network Analysis Module (NAM) in the WAAS Central Manager and describes how to configure and use the NAM.

This chapter includes the following sections:

- [Information About NAM Integration, page 15-1](#)
- [Prerequisites, page 15-1](#)
- [Guidelines and Limitations, page 15-2](#)
- [Configuring the NAM, page 15-2](#)
- [Monitoring and Analyzing Traffic, page 15-14](#)

### Information About NAM Integration

WAAS is enhanced with application performance monitoring capabilities when you integrate the WAAS Central Manager with the Cisco Network Analysis Module (NAM) Traffic Analyzer software.

The NAM Traffic Analyzer software enables network managers to understand, manage, and improve how applications and services are delivered to end users by combining flow-based and packet-based analysis into one solution. With the NAM, you can perform traffic analysis of applications, hosts, and conversations, make performance-based measurements on application, server, and network latency, and use Quality of Service (QOS) metrics for network-based services and problem analysis using packet captures. The Cisco NAM includes an embedded, web-based Traffic Analyzer GUI that provides quick access to the configuration menus and presents easy-to-read performance monitoring and analysis on network traffic.

The architecture for WAAS Central Manager and NAM integration has the NAM deployed as a virtual blade in one of the data center WAEs. While this deployment eliminates the need for separate hardware in Proof of Concept (POCs) deployments, users are not limited to this deployment and can deploy NAM 5.1 in any form factor such as virtual blade, physical blade, or appliance.

### Prerequisites

The NAM integration has the following prerequisites:

- The WAAS 4.4.1 or later Central Manager is installed and configured.
- The NAM 5.1 hardware and software are installed.

- The following configurations are performed:
  - Enable HTTP or HTTPS
  - Create an admin web user account.
  - Create a MonitorView web user account.
- Both the WAAS Central Manager and the client computer from which you connect to the Central Manager must be able to access the configured NAM server on the network.

For more information, see the *Cisco Network Analysis Module Installation and Configuration Guide*.

To install the NAM Virtual Service Blade (VSB) on a WAAS appliance, configure the NAM VSB, and generate useful reports to demonstrate the impact of WAAS in a Proof of Concept (POC), see the *Cisco Prime Network Analysis Module for WAAS Virtual Blade Installation and Configuration Guide, 5.1*.

## Guidelines and Limitations

The NAM integration feature has the following configuration guidelines and limitations:

### Supported Deployments

In this release, the following types of deployments are supported:

- POC deployments
- Small and medium production networks that can be monitored by one instance of NAM (virtual blade, physical blade, or appliance). In this release, only one NAM instance is supported, which means that large enterprises that require more than one NAM instance to handle their network capacity must be managed separately without the WAAS-CM integration.

### Limitations

- Browser limitations—Certain browser settings can limit the functionality of the NAM integration. For example, if Internet Explorer privacy settings are set to the default, Medium, the integration does not work because of cookie restrictions. Specify the privacy settings as Low.
- Printing limitations - When you print the NAM windows in a PDF format, they do not produce the desired output.
- When duplicate data is reported by multiple WAE data sources, the NAM does not automatically remove duplication of this data. Use the Data Source selector in the dashboards and charts to address this limitation.

## Configuring the NAM

This section includes the following topics:

- [Task Flow for Configuring the NAM, page 15-3](#)
- [Configuring the Basic Setup, page 15-3](#)
- [Configuring a Site, page 15-5](#)
- [Configuring a WAAS Monitored Server, page 15-10](#)
- [Configuring a Data Source, page 15-11](#)
- [Setting Preferences, page 15-14](#)
- [Launching the NAM User Interface, page 15-14](#)

## Task Flow for Configuring the NAM

This section includes the following topics:

- [Basic Configuration, page 15-3](#)
- [Advanced Configuration, page 15-3](#)

### Basic Configuration

The basic NAM configuration includes the following tasks:

- Configuring the setup (see [Configuring the Basic Setup, page 15-3](#)).
  - Connect to a NAM server by providing the server's IP address, protocol, and port.
  - Establish account credentials.
  - Associate a WAAS device group or WAAS Express device group with configured policies.
  - Enable Flow Agent.
- Configuring Sites—To display accurate data on charts and dashboards, every site on which WAAS is planned to be deployed must be configured on the NAM (see [Configuring a Site, page 15-5](#)).

Configuring sites involves the following tasks:

- Define sites
- Use definition rules
- Specify sites using subnets
- Configuring monitored servers (see [Configuring a WAAS Monitored Server, page 15-10](#)).
  - Specify the servers to be monitored by the NAM using the WAAS device's flow monitoring.
  - Enabling NetFlow and flow agent data sources on the actual devices, with the NAM as the collector, to automatically create the device entries in the NAM.

### Advanced Configuration

Advanced NAM configuration includes the following tasks:

- Configuring and synchronizing user-defined Classifiers and Applications with the NAM (see [Synchronizing Classifiers and Applications, page 15-10](#)).
- Creating and editing an auto-created WAAS data source to monitor WAAS traffic statistics (see [Configuring a Data Source, page 15-11](#)).
- Changing system preferences (see [Setting Preferences, page 15-14](#)).
- Launching the NAM user interface (see [Launching the NAM User Interface, page 15-14](#)).

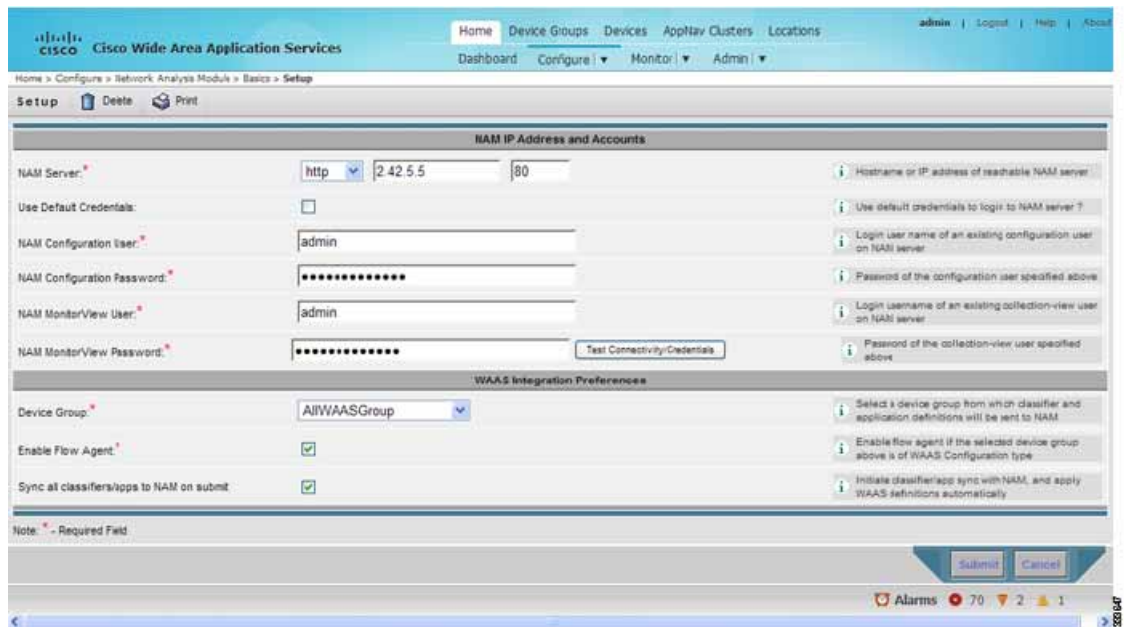
## Configuring the Basic Setup

Only device group level policy configurations are applicable for NAM.

- 
- Step 1** From the WAAS Central manager menu, choose **Configure > Network Analysis Module > Basics > Setup**.

The Setup window appears. This window allows you to configure the NAM IP address and accounts.

Figure 15-1 Setup Window



- Step 2** In the NAM Server area, provide the following information:
- Choose either HTTP or HTTPS depending on the access that was configured during the installation of NAM.
  - Enter the hostname of the NAM server.
  - Enter the IP address of the NAM server.

To set up a sites or sites on the NAM module, perform the following steps:

- Step 3** To use the pre-configured login credentials to access the NAM server, select the **Use Default credentials** option. Proceed to [Step 8](#).

The following preconfigured login credentials are specified in the Central Manager:

- Configuration user:
  - Username—admin
  - Password—admin
- MonitorView user:
  - Username—waasro
  - Password—waasrao

These credentials work only if you configured the NAM with them explicitly after installation or you installed the NAM virtual blade with these credentials for POC deployments.

- Step 4** In the NAM Configuration User field, enter the username of an existing configuration user on the NAM server.
- Step 5** In the NAM Configuration Password field, enter the password of the configuration user that was specified in [Step 3](#).

- Step 6** In the NAM MonitorView User field, enter the username of an existing collection-view user configured on the NAM server.
- Step 7** In the NAM MonitorView Password field, enter the password of an existing collection-view user that you specified in [Step 3](#).
- Step 8** Click the **Test Connectivity/Credentials** button, to test if the NAM server is accessible and to check if the user credentials that you specified are valid.
- Step 9** The WAAS Integration Preferences area allows you to configure a WAAS device group to work with the NAM server.
- From the Device Group drop-down list, choose a device group from which WAAS applications and classifier definitions are pushed to the NAM when performing a synchronization operation.  
  
The AllWAASDevices or AllWAASExpressDevices device group is the default selection for POC deployments. For production deployments, choose a suitable device group with a subset of devices for which you require the NAM integration and APM functionality.
  - Choose the **Enable Flow Agent** option to enable sending of flow agent reports from the WAAS devices on the selected device group to NAM.  
  
This option is disabled for WAAS Express device group because WAAS Express does not support the flow agent/flow monitor. In this scenario, you must use a NAM Performance Agent (PA) from Cisco IOS routers to view the response time metrics. The NAM charts that display response times in the WAAS Central Manager also automatically handle the PA from routers.
  - Choose the **Sync all classifiers/apps to NAM on submit** option to initiate a classifier and application synchronization with NAM and to apply WAAS definitions automatically.
- Step 10** Click the **Submit** button.
- 

## Configuring a Site

A site is a collection of hosts, or network endpoints, partitioned into views that helps you to monitor traffic and to troubleshoot problems. These views allow you to see measurements of application performance on networks where WAAS devices are deployed and dashboards that show the traffic levels between sites and alarms levels per site. You can use other NAM features without defining any sites (the default configuration).

If you have set up sites, you can choose a particular site to view in the Interactive Report and view data relevant to that site only. In some cases, you can select both a client site and a server site to view data that pertains to the interaction between hosts at different sites.



### Note

If you configure multiple data sources for the same site, the same traffic might be accounted for more than once, which results in inflated traffic statistics. For example, if you configure the NAM to receive SPAN traffic for a particular site, and it is also receiving NetFlow records for that same site, both SPAN traffic and NetFlow records are combined into the traffic statistics. In this case, if you want to see only the statistics for a particular data source, you need to use the Interactive Report window on the left side of the window to specify both the site and data source.

---

**Note**

Classification of received data from data sources to sites is done only after the sites are configured. Any old data from these data sources before the sites were configured are counted under the default 'Unassigned' site.

The site definition is very flexible and can accommodate various scenarios. The site definition is used not only for viewing of data but for data export and data retention as well. Typically, a site is defined by its subnet(s), but a site can also be defined using the following rules:

- Subnet (IP address prefix)
- Subnet from a data source
- Subnet from a given VLAN of a SPAN data source
- WAE device serving the site

We recommend that you define sites using subnets whenever possible.

**Note**

The same rule cannot be defined in multiple sites.

**Note**

If you are configuring a WAAS device, you must add WAAS servers to the NAM. See [Auto Creating a New WAAS Device](#).

To display accurate data on charts and dashboards, you must configure every site on which WAAS is planned to be deployed on the NAM. To get a breakdown of the traffic volume and response time for each branch and the data center, configure the IP subnets for all the sites that has WAAS deployed.

This section includes the following topics:

- [Definition Rules, page 15-6](#)
- [Viewing Defined Sites, page 15-7](#)
- [Defining Sites, page 15-8](#)
- [Detecting a Subnet, page 15-8](#)
- [Editing a Site, page 15-9](#)
- [Deleting a Site, page 15-9](#)

## Definition Rules

Typically, subnets alone are sufficient to define a site. For example:

```
Site Data-Center = subnet 172.20.0.0/16
```

In certain scenarios when there are overlapping IP address spaces in the networks (for example, in private networks where hosts from different sites have the same IP addresses), you can use data sources or VLANs to differentiate the subnets. For example:

```
Site NewYork = subnet 10.11.0.0/16 from "NDE-NewYork" data source.
```

```
Site LosAngeles = subnet 10.11.0.0/16 from "NDE-LosAngeles" data source.
```

```
Site Sale-Dept = subnet 10.11.0.0/16 from VLAN 10 of "DATA PORT 1" data source.
```

```
Site Finance-Dept = subnet 10.11.0.0/16 from VLAN 12 of "DATA PORT 1" data source.
```

This section includes the following topics:

- [Specifying a Site Using WAE devices \(WAAS Data Sources\), page 15-7](#)

- [Specifying a Site Using Multiple Rules](#), page 15-7
- [Resolving Ambiguity \(Overlapping Site Definitions\)](#), page 15-7

### Specifying a Site Using WAE devices (WAAS Data Sources)

For WAAS traffic, you can define a site associated with a WAE device without specifying the site's subnets. Simply select all of the WAAS data sources coming from the WAE device(s) serving that site.

Site SanJose = WAE-SJ-Client, WAE-SJ-CltWAN, and WAE-SJ-Passthrough data sources.



#### Note

Cisco recommends that you use subnets to specify WAAS-optimized sites. Use this method only if the site's subnets cannot be determined.

### Specifying a Site Using Multiple Rules

You can define a site using a combination of multiple rules described above. For example, if a site has both optimized and nonoptimized traffic, it can be defined using a combination of WAAS data sources and a subnet from a NetFlow Data Export (NDE) data source.

When you define a site using multiple data sources, be careful to make sure that those data sources do not have duplicated traffic to avoid counting the site traffic statistics twice.

### Resolving Ambiguity (Overlapping Site Definitions)

Conflicting rules are not allowed in site definitions. Of the following two scenarios, the second one is not allowed:

```
1.2.3.0/24 from SPAN1 = SiteA
1.2.3.0/24 from SPAN1 = SiteB
```

Using a prefix is the preferred method. The data source and VLAN are secondary. In the following two scenarios, the first receives the higher priority:

```
1.2.3.0/24 = Site D
WAE1-Client datasrc = Site E
```

The longest prefix has higher priority. It has the same data source/VLAN. In the following two scenarios, the first receives the higher priority:

```
1.2.3.0/24 from SPAN1 = Site A
1.2.0.0/16 from SPAN1 = Site C
```

The more refined (specific) rule has higher priority. In the following two scenarios, the first would receive the higher priority.

```
1.2.3.0/24 from SPAN1 = Site A
1.2.3.0/24 (any datasrc) = Site D
```

## Viewing Defined Sites

You can view a defined site.

- Step 1** From the WAAS Central manager menu, choose **Configure > Network Analysis Module > Basics > Sites**.

The Sites window appears. Defined sites are listed in the table.

The following details for the sites display:

- **Name**—Lists the name of the site.
  - **Description**—Describes what the site includes.
  - **Rule**—Lists the first rule that is assigned to the selected site. If you see periods next to the site rule (...), that means that multiple rules were created for that site. To see the list of all rules, click the quick view icon (after highlighting the site, click the small arrow on the right).
  - **Status**—Shows if the site is enabled or disabled.
- 

## Defining Sites

You can define a site.

- 
- Step 1** From the WAAS Central Manager menu, choose **Configure > Network Analysis Module > Basics > Sites**.
- The Sites window appears. This window lists the sites that are set up on the NAM module.
- Step 2** Click the **Create** button. The Sites Configuration window displays.
- Step 3** In the Name field, enter a name for the site.
- Step 4** In the Description field, enter a description for the site.
- Step 5** Check the **Disable Sites** check box if you want the NAM to skip this site when classifying traffic. This feature is useful if the site is no longer active, but you would still like to access historical site data in the database. Otherwise, you should delete sites that are not needed.
- Step 6** In the Subnet field, enter the IP address subnet (IPv4/IPv6 address and mask); for example, 10.1.1.0/24.
- Step 7** Click the blue **i** to get information about the site rules.
- Step 8** Click the **Detect** button to tell the NAM to look for subnets in the traffic. See [Detecting a Subnet, page 15-8](#).
- Step 9** In the Data Source field, specify the data source where the site traffic is coming from.
- Leave this field blank if the site traffic can come from multiple data sources.
- Step 10** In the VLAN field, specify the VLAN where the site traffic is coming from. This field is not valid for NDE and WAAS data sources.
- Leave this field blank if the site traffic can come from multiple VLANs.
- Step 11** Click the **Submit** button.




**Note** The “Unassigned” site (with a description of “Unclassified hosts”) includes any sites that do not match any of your site configurations. Sites are classified at the time the packets are processed.

---

## Detecting a Subnet

You can detect a subnet.



- 
- Step 1** When you click the **Detect** button at **Configure > Network Analysis Module > Basics > Sites > Sites Configuration**, the NAM looks for subnets detected within in the past hour. The Subnet Configuration window displays. This window allows you specify the details of the sources in which you like NAM to detect subnets.
- Step 2** In the Subnet Mask field, enter the subnet mask.
-  **Note** If the bit mask is less than 32, the NAM detects an IPv4 subnet. If the bit mask is between 32 and 64, the NAM detects an IPv6 subnet.
- 
- Step 3** From the Data Source drop-down list, choose the data source in which you would like to detect subnets.
- Step 4** From the Interface drop-down list, choose the interface in which you would like to detect subnets.
- Step 5** In the Filter Subnets within Network field, enter an IPv4 or IPv6 address.
- Step 6** Check the **Unassigned site** check box to include sites that do not match any of your site configurations. Sites are classified at the time of packet processing.
- Step 7** Click the **Detect** button. The NAM finds those subnets that meet the criteria that you entered.
- 

## Editing a Site

You can edit sites that have been created. Note that the “Unassigned” site cannot be edited or deleted.

- 
- Step 1** Choose **Configure > Network Analysis Module > Basics > Sites**. A list of configured sites appears.
- Step 2** Choose the site that you want to edit.
- Step 3** Click the **Edit** button. The Site Configuration window displays.
- Step 4** Edit the required field (Name, Priority, Data Sources, or Prefix/Mask).
- Step 5** Click the **Submit** button.
- 

## Deleting a Site

You can delete sites that have been created. Note that the “Unassigned” site cannot be deleted.

- 
- Step 1** Choose **Configure > Network Analysis Module > Basics > Sites**. A list of configured sites appears.
- Step 2** Choose the site that you want to delete.
- Step 3** Click the **Delete** button.
-

## Configuring a WAAS Monitored Server

WAAS monitored servers specify the servers from which WAAS devices export traffic flow data to the NAM monitors. To enable WAAS monitoring, you must list the servers to be monitored by the NAM using the WAAS device's flow monitoring.



### Note

The NAM is unable to monitor WAAS traffic until you set up WAAS monitored servers. The NAM displays the status of WAAS devices as pending until you set up WAAS monitored servers.

This section includes the following topics:

- [Adding a WAAS Monitored Server, page 15-10](#)
- [Deleting a WAAS Monitored Server, page 15-10](#)

## Adding a WAAS Monitored Server

You can add a WAAS monitored server.

- 
- Step 1** Choose **Configure > Network Analysis Module > Basics > Monitored Servers**. The WAAS Servers window appears.
- Step 2** Choose **Select All** to add all the servers or select the required servers from the list.
- Step 3** Click the **Add** button.
- 

## Deleting a WAAS Monitored Server

To delete a WAAS monitored server data source:

- 
- Step 1** Choose **Configure > Network Analysis Module > Basics > Monitored Servers**. The WAAS Servers window appears.
- Step 2** Choose the monitored WAAS server to delete, and click the **Delete** button. A confirmation dialog box displays to ensure you want to delete the selected WAAS monitored server.
- Step 3** Click the **OK** button to delete the WAAS monitored server.

## Synchronizing Classifiers and Applications

You can synchronize the WAAS classifier and application definitions with the application and application groups in the NAM. A classifier and an application in WAAS are equivalent to an application and application group respectively in the NAM. WAAS applications and classifier definitions from the device group specified during the setup configuration are matched with those in the NAM server that WAAS is connected to. WAAS classifiers can contain source and destination IP addresses while the NAM recognizes an application on the basis of port numbers. Hence, only the WAAS classifiers that contain port numbers are synchronized.

You can view the results of the synchronization by following these steps:

- 
- Step 1** Choose **Configure > Network Analysis Module > Advanced > Classifier/App Sync**. The **Classifier/App Sync Preferences** window appears.
- The results are displayed under the following categories:
- **Conflicting classifiers/applications**—You can choose one or all the WAAS classifiers/applications for synchronization with the NAM. By default, all the classifier/applications are selected.
  - **NAM-only applications/application groups**—Applications/application groups in the NAM are displayed. If required, you can manually add these definitions in WAAS at the device-group or device levels.
- Step 2** To view differences in classifier definitions in WAAS and the NAM, click on the arrow next to **Classifier Definition Differences**.
- Step 3** Choose the WAAS classifiers that you want to synchronize with the NAM applications and provide the required information to define the filter criteria.
- Step 4** Click the **Go** button. The differences in the definitions are displayed.
- Step 5** To view applications/application groups in the NAM, click on the arrow next to **NAM-Only Applications**. Information on the applications/application groups is displayed. If required, you can manually add these definitions in WAAS at the device-group or device levels.
- Step 6** To refresh the Classifier/App Sync page, click the **Refresh** button.
- Step 7** Click the **Submit** button to start the synchronization process.
- 

## Configuring a Data Source

Data sources are the source of traffic for the NAM Traffic Analyzer. Some examples are physical data ports of the NAM where you get SPAN data, a specific router or switch that sends NetFlow to the NAM, or a WAAS device segment that sends data to the NAM or ERSPAN and that goes to the NAM's management port.

A new feature in NAM 5.0 is the auto discovery of data sources, in which you can click **Auto Create** so that the NAM can automatically discover the data sources. You can see details such as the IP addresses of devices that send packets to the NAM and the time that the last NDE packet was received (in NAM 4.x, this feature was called Listening Mode).



### Note

If you have configured sites, you can assign data sources to that particular site. If you do assign data sources to a site, and you also configure the data sources, the two could overlap because sites can also be a primary “view” into data sources. If there is a mismatch between the two, you do not see any data.



### Note

We recommend that you configure a site using subnets instead of selecting a data source.

The following areas contain specific information about the types of data sources:

- SPAN
- ERSPAN
- VACL
- NetFlow

- WAAS

The NAM Data Sources window lists the data sources that are configured for that NAM module. The fields are as follows:

- Device—DATA PORT if it is a local physical port or the IP address of the learned device.
- Type—The source of traffic for the NAM.
  - DATA PORT if it is a local physical port.
  - WAAS, ERSPAN, or NETFLOW if a data stream is exported from the router, switch, or WAE device.
- Activity—Shows the most recent activity.
- Status—ACTIVE or INACTIVE.
- Data Source—Name given to the data source.
- Data Source Details—Physical Port, or information about the data source being enabled or disabled.

This section includes the following topics:

- [Adding a Data Source for a New WAAS Device, page 15-12](#)
- [Auto Creating a New WAAS Device, page 15-13](#)
- [Editing a WAAS Data Source, page 15-13](#)
- [Deleting a WAAS Data Source, page 15-13](#)

## Adding a Data Source for a New WAAS Device

The NAM uses WAAS data sources to monitor traffic that is collected from different WAAS segments: Client, Client WAN, Server WAN, Server, and Passthrough. Each WAAS segment is represented by a data source. You can set up the NAM to monitor and report other traffic statistics of the WAAS data sources such as application, host, and conversation information in addition to the monitored Response Time metrics.

Adding a WAAS device is not usually necessary because export-enabled WAAS devices are detected and added automatically.

To manually add a WAAS device to the list of devices monitored by the NAM:

- 
- Step 1** Choose **Configure > Network Analysis Module > Advanced > Data Sources**.
  - Step 2** Click the **Create** button.  
The NAM Data Source Configuration dialog box appears.
  - Step 3** Choose **WAAS** from the list of Types.
  - Step 4** In the IP field, enter the device IP address.
  - Step 5** Check the check boxes for the appropriate WAAS segments.

You can configure the WAAS data sources to monitor the following WAAS segments:

- Client—Configures the WAE device to export the original (LAN side) TCP flows that originated from its clients to the NAM for monitoring.
- Client WAN—Configures the WAE device to export the optimized (WAN side) TCP flows originated from its clients to the NAM for monitoring.

- **Server WAN**—Configures the WAE device to export the optimized (WAN side) TCP flows from its servers to the NAM for monitoring.
- **Server**—Configures the WAE device to export the original (LAN side) TCP flows from its servers to the NAM for monitoring.
- **Passthrough**—This setting configures the WAE device to export the TCP flows that are passed through unoptimized.

**Step 6** Click the **Submit** button to add the new WAAS custom data source.

---

## Auto Creating a New WAAS Device

If you have numerous WAE devices, you can set up the NAM to configure newly discovered WAE devices using a predefined configuration template using the NAM Auto Config option.



### Note

If most of your WAE devices are edge WAE devices, you might want to set the auto config option as an edge device, and manually configure the data center WAE. For example, choose the Client segment for monitoring.

---

- Step 1** Choose **Configure > Network Analysis Module > Advanced > Data Sources**. The data sources appear.
- Step 2** Click the **Auto Create** button.  
The NAM Data Source Configuration dialog box appears.
- Step 3** Check the **WAAS** check box.
- Step 4** Check the check boxes for the required segments. See [Adding a Data Source for a New WAAS Device, page 15-12](#), for more information.
- Step 5** Click the **Submit** button to add the new WAAS custom data source.
- 

## Editing a WAAS Data Source

You can edit a WAAS device's custom data source.

---

- Step 1** Choose **Configure > Network Analysis Module > Advanced > Data Sources**. The data sources appear.
- Step 2** Click the WAAS device that you want to modify, and click the **Edit** button. The NAM Data Source Configuration dialog box appears.
- Step 3** Modify the segments as required.
- Step 4** Click the **Edit** button to edit the WAAS custom data source.
- 

## Deleting a WAAS Data Source

You delete a WAAS custom data source.

- 
- Step 1** Choose **Configure > Network Analysis Module > Advanced > Data Sources**. The data sources appear.
- Step 2** Choose the WAAS custom data source that you want to delete, and click the **Delete** button.  
A confirmation dialog box appears to ensure that you want to delete the selected WAAS monitored server.
- Step 3** Click **OK** to delete the WAAS custom data source.
- 

## Setting Preferences

You can configure characteristics such as NAM display, audit trail, and file format preferences for the NAM module.

- 
- Step 1** Choose **Configure > Network Analysis Module > Advanced > Preferences**. The Preferences window appears.
- Step 2** Specify the following preferences:
- Refresh Interval (60-3600 sec)—Amount of time between the refresh of information on dashboards.
  - Top N Entries (1-10—Number of colored bars on the Top N charts.
  - Perform IP Host Name Resolution—Wherever an IP address appears, it gets translated to a hostname via a DNS lookup.
  - Data Displayed In—Data displayed in Bytes or Bits.
  - International Notation—Choose the way you would like the numbers to appear.
  - Audit Trail—The Audit Trail option displays a listing of recent critical activities that have been recorded in an internal syslog log file. Syslog messages can also be sent to an external log.
- Step 3** Click **Submit** to save your configurations
- 

## Launching the NAM User Interface

You can launch the NAM user interface to perform advanced configuration and monitoring tasks.

To launch the NAM user interface, do the following:

Choose **Configure > Network Analysis Module > Advanced > Launch NAM GUI**. A new window or a tab (depending on your browser settings) opens displaying a NAM session that uses the existing login credentials.

## Monitoring and Analyzing Traffic

The monitoring and analyzing traffic feature provides intuitive workflows and interactive reporting capabilities.

The monitoring and analyzing dashboards allow you to view network traffic, application performance, site performance, and alarms at a glance.

This section provides information about monitoring your network traffic and analyzing the information presented.

This section contains the following topics:

- [Navigation, page 15-15](#)
- [Top Talkers Dashboards, page 15-16](#)
- [Throughput Dashboards, page 15-18](#)
- [Performance Analysis Dashboards, page 15-19](#)

## Navigation

This section includes the following topics:

- [Interactive Report, page 15-15](#)
- [Saving Filter Parameters, page 15-15](#)
- [Setting up Scheduled Exports, page 15-16](#)

## Interactive Report

On most monitoring dashboards, you can use the Interactive Report on the left to redefine the parameters of the information displayed in the dashboards. Click the **Filter** button to change the parameters of the information that appears in the charts.

You can choose from various parameters, such as the time interval for the data being displayed. An asterisk represents required fields.

The reporting time interval selection changes depending upon the dashboard that you are viewing, and the NAM platform that you are using:

- The NAM appliance supports the following short term intervals: Last 5 minutes, last 15 minutes, last 1 hour, last 4 hours, and last 8 hours.
- The Branch Routers (NME-NAM) support the following short term intervals: Last 5 minutes, last 15 minutes, and last 1 hour.
- The other platforms support the following short term intervals: Last 5 minutes, last 15 minutes, last 1 hour, and last 4 hours.
- The Long Term interval selections (Last 1 day, 1 week, and 1 month) are disabled from the following dashboards: RTP Streams, Voice Call Statistics, Calls Tables, RTP Conversations, Host Conversations, Conversations, and Response Time Details Views.
- A maximum interval for up to 1 hour is supported for the following dashboards: RTP Streams, Voice Call Statistics, Calls Tables, RTP Conversations, Host Conversations, Conversations, Response Time Details Views.

The From and To fields are enabled only when the Time Range is set to Custom.

## Saving Filter Parameters

After clicking the Filter button in the Interactive Report and selecting the desired parameters, you can then save these selections with the purpose of viewing that same data at a future time. Enter a name in the Filter Name field. A filter is saved only be saved if a filter name is entered. Only saved filters are persisted across multiple login sessions. Click the **Submit** button.

This filter is now saved and displayed underneath the Interactive Report. You can save up to five filters.

## Setting up Scheduled Exports

You can create a Scheduled Export to have the dashboards extracted regularly and sent to you in CSV or HTML format.

You can set up scheduled jobs that will generate a daily report at a specified time, in the specified interval, and then e-mail it to a specified e-mail address. You can also obtain a report on the spot clicking on the Preview button, rather than wait for the scheduled time. This report can also be sent after you preview it.

To set up a Scheduled Export, follow these steps:

- 
- Step 1** On most screens under **Network Analysis**, the Interactive Report is available on the left side of the screen. Click the **Export** button in the **Interactive Report** box. The **Create Scheduled Report** window appears.
  - Step 2** Choose the Export Type (Daily or Weekly).
  - Step 3** Choose the Export Time (when you would like the report delivered to you): Day and Hour.
  - Step 4** Choose the Report Time (if Daily) or the Data Time Range (if Weekly). This is the interval of time you would like measured.
  - Step 5** The Report Time for a daily report is restricted to the current 24 hours.
  - Step 6** The Report Time for a weekly report is always from 17:00 to 17:00, for however many days chosen.  
For example:  
If you choose Export Type “Weekly,” Data Time Range “Last 2 Days,” and Export Time: Day “Wednesday” and Hour “13:00,” the report will show data from Sunday at 17:00 to Tuesday at 17:00.  
If you choose Export Time: Day “Wednesday” and Hour “18:00,” the report will show data from Monday at 17:00 to Wednesday at 17:00.
  - Step 7** Enter the e-mail address to which you would like the report delivered.
  - Step 8** Choose the delivery option (HTML or CSV).
  - Step 9** Enter the report description, which will appear at the end of the filename of the report delivered to you.
  - Step 10** Click:
    - The **Reset** button to clear the values in the dialog box
    - The **Preview** button to preview the report
    - The **Submit** button to submit the request for the scheduled job
    - The **Cancel** button to close the dialog box and return to the previous screen
- 

## Top Talkers Dashboards

This section includes the following topics:

- [Traffic Summary, page 15-17](#)
- [Top Talkers Details, page 15-17](#)



## Traffic Summary

The Top Talkers Summary dashboard allows you to view the Top N Applications, Top N Application Groups, Top N Hosts (In and Out), IP Distribution by Bytes, Top N DSCP, and Top N VLAN that is being monitored on your network. It provides auto-monitoring of traffic from all WAAS devices. You can view the Traffic Summary Dashboard by choosing **Monitor > Network Analysis Module > Overview**.

You can use the Interactive Report on the left to filter the information for a particular site, data source, VLAN, or reporting time interval. You can specify just one type of criteria and leave the others blank, or specify all of them. You can also choose to view the rate or cumulative data from the Interactive Report.

When you log into the NAM for the first time, the default view is the Traffic Summary dashboard, and the top data source is selected by default.

The charts shown on this dashboard are as follows:

- Top N Applications

The Top N Applications Chart enables you to view the traffic rate (bytes per second or bits per second) or traffic volume (bytes or bits), depending on the Interactive Report filter selection (data rate or cumulative, respectively). When you place your cursor over the colored bar, you will see the number of bytes per second collected or the total bytes over the last time interval.

- Top N Application Groups

This chart shows a detailed analysis of the Top N application groups and the traffic rate or volume for this interval. In the Interactive Report, you can select either rate or cumulative, where rate is the bytes per second, and cumulative is the total number of bytes.

- Top N Hosts (In and Out)

This chart displays the traffic rate (bytes per second or bits per second) or traffic volume (bytes or bits).

- IP Distribution by Bytes

This chart shows the percentages of bytes that are distributed to IP protocols (for example, IPv4 TCP).

- Top N DSCP

This chart shows statistics for the top DSCP aggregation groups.

- Top N VLAN

This chart shows the Top N VLAN statistics. In this chart, you might see VLAN 0, which is for traffic that does not have any VLAN tags.

To see a chart in table format, use the View as Chart / View as Grid toggle button on the bottom right corner of the chart. You can also click the **Show as Image** button to view the image and save it as a PNG file.

When viewing the data as a Grid, the numbers are formatted according to what you have configured in **Configure > Network Analysis Module > Advanced > Preferences**. In that window, you can also configure the number of Top N entries you would like to display.

## Top Talkers Details

While you are in the process of deploying WAAS devices, you can get data to assist in the WAAS planning and configuration. For information about setting up WAN traffic, see [Adding a Data Source for a New WAAS Device](#).

When you choose **Monitor > Network Analysis Module > Top Talkers Details**, you will see the window that assists you in the predeployment process. Use the Interactive Report window to select the traffic you want to analyze for optimization. The window displays the Top Applications, Top Network Links, Top Clients, and Top Servers.

Based on the results, you can then configure the WAAS products to optimize your network.

## Throughput Dashboards

This section includes the following topics:

- [Network, page 15-18](#)
- [Top Applications, page 15-18](#)
- [Application, page 15-19](#)

## Network

The Network dashboard enables you to view LAN versus WAN throughput for WAAS users both in the incoming and outgoing directions. To view these reports, configure interface groups that comprise WAN and LAN interfaces. The displayed information represents the total data collected since the collection was created, or since the NAM was restarted. To view the Network dashboard, choose **Monitor > Network Analysis Module > Throughput > Network**.

Choose an interface group view from the Interface Selector on the left side of the window to see traffic in the charts. Click the arrow icon to the left of the NDE data source name to display all interfaces groups, and then select an interface group view. If the charts show no data, and you see the message “Interface needs to be selected,” you have not yet chosen an interface group view.

Once chose the interface group view, you see the following charts populated:

- Interface Traffic (Ingress % Utilization and Egress % Utilization)
- Top N Applications—Ingress
- Top N Applications—Egress
- Top N Hosts—Ingress
- Top N Hosts—Egress
- Top N DSCP Aggr—Ingress
- Top N DSCP Aggr—Egress

You can enter the interface speed manually through the Interface capacity table, or the speed can be auto configured if the SNMP settings for the NDE device are entered in the data source table.

## Top Applications

In the Top Applications dashboard, you can view the top applications by the traffic rate over a selected time and for the specified site and/or data source.

Applications Over Time shows you all of the applications that have been running for the time period interval. The color-coded legend shows you what the applications are running.

If you place your cursor over any of the data points, you get more details about the exact values for each of the applications that are running.

## Application

- In the Application window, you can see the traffic level for a given application over a selected period of time. It is available under the **Monitor > Network Analysis Module > Throughput > Application**. This window shows you the following:
  - A graph of application traffic over time.
  - Top hosts that transmit and receive traffic on that application for the selected time period.
  - Application Configuration that shows the criteria by which the NAM classifies packets as that application. This criteria is typically a list of TCP and/or UDP ports that identify the application. Note that some applications are identified by heuristic or other state-based algorithms.

## Performance Analysis Dashboards

This section includes the following topics:

- [Application, page 15-19](#)
- [Conversation Multisegments, page 15-19](#)

## Application

The Application dashboard provides the transaction time performance for an application as well as the original and optimized traffic volume reported by the flow agent. Information about how the transaction time is broken up across client, WAN, and server segments is also provided. For example, if the transaction time is dominated by the server segment time (due to a slow server), WAAS may not be able to improve the performance as much as when it is dominated by WAN network time. To view the Application performance analysis dashboard, choose **Monitor > Network Analysis Module > Performance Analysis > Application**.

The charts available on this dashboard are as follows:

- Transaction Time (Client Experience)
- Traffic Volume and Compression Ratio
- Average Concurrent Connections (Optimized vs. Passthru)
- Multi-Segment Network Time (Client LAN - WAN - Server LAN)

## Conversation Multisegments

The Conversation Multiple Segments dashboard correlates data from different data sources, and allows you to view and compare response time metrics from multiple WAAS segments (data sources). To view the Conversation Multiple Segments dashboard, choose **Monitor > Network Analysis Module > Performance Analysis > Conversation Multisegments**.

The Response Time Across Multiple Segments window shows the response time metrics of the selected server or client-server pair from applicable data sources.

