



Configuring Administrative Login Authentication, Authorization, and Accounting

This chapter describes how to configure administrative login authentication, authorization, and accounting for Wide Area Application Services (WAAS) devices.

This chapter contains the following sections:

- [About Administrative Login Authentication and Authorization, page 6-2](#)
- [Configuring Administrative Login Authentication and Authorization, page 6-6](#)
- [Configuring AAA Accounting for WAAS Devices, page 6-30](#)
- [Viewing Audit Trail Logs, page 6-32](#)

You use the WAAS Central Manager GUI to centrally create and manage two different types of administrator user accounts (device-based CLI accounts and roles-based accounts) for your WAAS devices. For more information on this topic, see [Chapter 7, “Creating and Managing Administrator User Accounts.”](#)



Note

Throughout this chapter, the term WAAS device is used to refer collectively to WAAS Central Managers and WAEs in your network. The term WAE refers to WAE appliances and WAE Network Modules (the NME-WAE family of devices).

About Administrative Login Authentication and Authorization

In the WAAS network, administrative login authentication and authorization are used to control login requests from administrators who want to access a WAAS device for configuring, monitoring, or troubleshooting purposes.

Login authentication is the process by which WAAS devices verify whether the administrator who is attempting to log in to the device has a valid username and password. The administrator who is logging in must have a user account registered with the device. User account information serves to authorize the user for administrative login and configuration privileges. The user account information is stored in an AAA database, and the WAAS devices must be configured to access the particular authentication server (or servers) where the AAA database is located. When the user attempts to login to a device, the device compares the person's username, password, and privilege level to the user account information that is stored in the database.

The WAAS software provides the following authentication, authorization, and accounting (AAA) support for users who have external access servers (for example, RADIUS or TACACS+ servers), and for users who need a local access database with AAA features:

- Authentication (or login authentication) is the action of determining who the user is. It checks the username and password.
- Authorization (or configuration) is the action of determining what a user is allowed to do. It permits or denies privileges for authenticated users in the network. Generally, authentication precedes authorization. Both authentication and authorization are required for a user log in.
- Accounting is the action of keeping track of administrative user activities for system accounting purposes. In the WAAS software, AAA accounting through TACACS+ is supported. For more information, see the [“Configuring AAA Accounting for WAAS Devices”](#) section on page 6-30.

**Note**

An administrator can log in to the WAAS Central Manager device through the console port or the WAAS Central Manager GUI. An administrator can log in to a WAAS device that is functioning as a Core or Edge WAE through the console port or the WAE Device Manager GUI.

When the system administrator logs in to a WAAS device before authentication and authorization have been configured, the administrator can access the WAAS device by using the predefined superuser account (the predefined username is admin and the predefined password is default). When you log in to a WAAS device using this predefined superuser account, you are granted access to all the WAAS services and entities in the WAAS system.

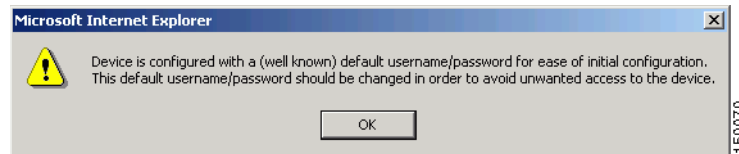
**Note**

Each WAAS device must have one administrator account with the username admin. You cannot change the username of the predefined superuser account. The predefined superuser account must have the username admin.

After you have initially configured your WAAS devices, we strongly recommend that you immediately change the password for the predefined superuser account (the predefined username is admin, the password is default, and the privilege level is superuser, privilege level 15) on each WAAS device.

If the predefined password for this superuser account has not been changed on a WAAS Central Manager device, the following dialog box is displayed each time you use the account to log in to the WAAS Central Manager GUI. (See [Figure 6-1](#).)

Figure 6-1 Message Indicating the Predefined Password for the Superuser Account Should Be Changed



If you have not changed the predefined password for this superuser account, the console will also display the following message each time you use the account to log in to the WAAS CLI on a WAAS device:

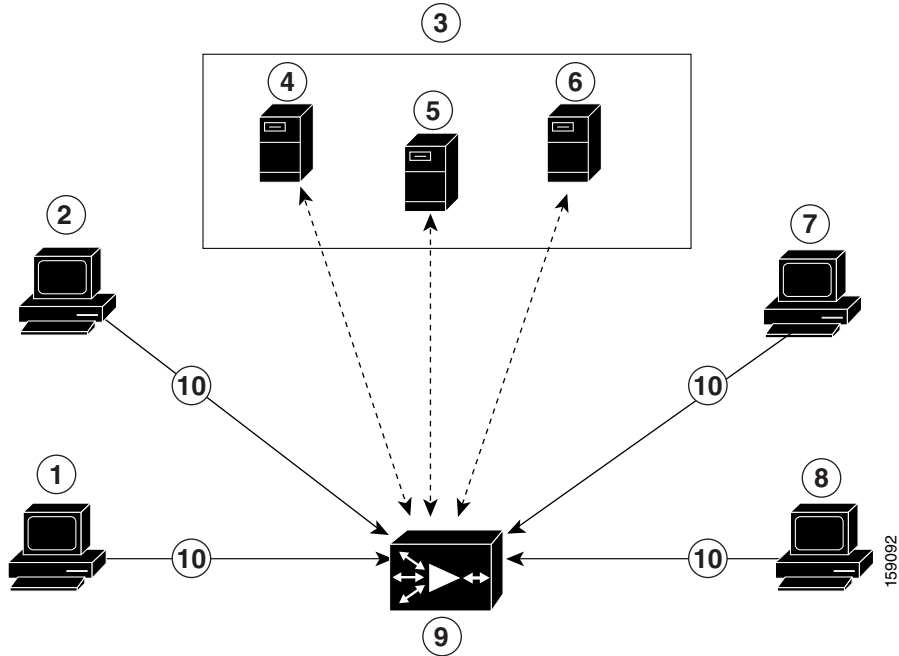
```
Device is configured with a (well known) default username/password
for ease of initial configuration. This default username/password
should be changed in order to avoid unwanted access to the device.
```

```
System Initialization Finished.
waas-cm#
```

For instructions on using the WAAS Central Manager GUI to change the password for the predefined superuser account, see the [“Changing the Password for Your Own Account”](#) section on page 7-7.

[Figure 6-2](#) shows how an administrator can log in to a WAE through the console port or the WAAS GUIs (the WAAS Central Manager GUI or the WAE Device Manager GUI). When the WAAS device receives an administrative login request, the WAE can check its local database or a remote third-party database (TACACS+, RADIUS, or Windows domain database) to verify the username with the password and to determine the access privileges of the administrator.

Figure 6-2 Authentication Databases and a WAE



1	FTP/SFTP client	6	Windows domain server
2	WAAS Central Manager GUI or WAE Device Manager GUI	7	Console or Telnet clients
3	Third-party AAA servers	8	SSH client
4	RADIUS server	9	WAE that contains a local database and the default primary authentication database
5	TACACS+ server	10	Administrative login requests

The user account information is stored in an AAA database, and the WAAS devices must be configured to access the particular authentication server (or servers) that contains the AAA database. You can configure any combination of these authentication and authorization methods to control administrative login access to a WAAS device:

- Local authentication and authorization
- RADIUS
- TACACS+
- Windows domain authentication

**Note**

If you configure authentication using an external authentication server, you still must create a user account in the WAAS Central Manager as described in [Chapter 7, “Creating and Managing Administrator User Accounts.”](#) The user account must not be a local one; that is, do not check the Local User check box when you create the account.

For more information on the default AAA configuration, see the “[Default Administrative Login Authentication and Authorization Configuration](#)” section on page 6-5. For more information on configuring AAA, see the “[Configuring Administrative Login Authentication and Authorization](#)” section on page 6-6.

Default Administrative Login Authentication and Authorization Configuration

By default, a WAAS device uses the local database to obtain login authentication and authorization privileges for administrative users.

Table 6-1 lists the default configuration for administrative login authentication and authorization.

Table 6-1 Default Configuration for Administrative Login Authentication and Authorization

Feature	Default Value
Administrative login authentication	Enabled
Administrative configuration authorization	Enabled
Authentication server failover because the authentication server is unreachable	Disabled
TACACS+ login authentication (console and Telnet)	Disabled
TACACS+ login authorization (console and Telnet)	Disabled
TACACS+ key	None specified
TACACS+ server timeout	5 seconds
TACACS+ retransmit attempts	2 times
RADIUS login authentication (console and Telnet)	Disabled
RADIUS login authorization (console and Telnet)	Disabled
RADIUS server IP address	None specified
RADIUS server UDP authorization port	Port 1645
RADIUS key	None specified
RADIUS server timeout	5 seconds
RADIUS retransmit attempts	2 times
Windows domain login authentication	Disabled
Windows domain login authorization	Disabled
Windows domain password server	None specified
Windows domain realm (Kerberos realm used for authentication when Kerberos authentication is used).	Null string
Note When Kerberos authentication is enabled, the default realm is DOMAIN.COM and security is the Active Directory Service (ADS).	
Hostname or IP address of the Windows Internet Naming Service (WIN) server for Windows domain	None specified
Window domain administrative group	There are no predefined administrative groups.

Table 6-1 Default Configuration for Administrative Login Authentication and Authorization

Feature	Default Value
Windows domain NETBIOS name	None specified
Kerberos authentication	Disabled
Kerberos server hostname or IP address (host that is running the Key Distribution Center (KDC) for the given Kerberos realm)	None specified
Kerberos server port number (port number on the KDC server)	Port 88
Kerberos local realm (default realm for WAAS)	kerberos-realm: null string
Kerberos realm (maps a hostname or DNS domain name to a Kerberos realm)	Null string

**Note**

If you configure a RADIUS or TACACS+ key on the WAAS device (the RADIUS and the TACACS+ client), make sure that you configure an identical key on the external RADIUS or TACACS+ server.

You change these defaults through the WAAS Central Manager GUI, as described in the [“Configuring Administrative Login Authentication and Authorization”](#) section on page 6-6.

Multiple Windows domain utilities are included in the WAAS software to assist with Windows domain authentication configuration. You can access these utilities through the WAAS CLI by using the **windows-domain diagnostics EXEC** command.

To invoke these utilities from the WAAS Central Manager GUI, follow these steps:

-
- Step 1** Choose **Devices > Devices**.
 - Step 2** Click the **Edit** icon next to the device for which you want to run the utilities in a predefined order.
 - Step 3** In the Contents pane, click the **Expand All** and **Show Advanced** buttons, and then choose **General Settings > Authentication > Windows Domain**.
 - Step 4** In the displayed window, click the **Show Authentication Status** button at the bottom of the window.
-

Configuring Administrative Login Authentication and Authorization

To centrally configure administrative login authentication and authorization for a WAAS device or a device group (a group of WAEs), follow these steps:

-
- Step 1** Determine the login authentication scheme that you want to configure the WAAS device to use when authenticating administrative login requests (for example, use the local database as the primary login database and your RADIUS server as the secondary authentication database).
 - Step 2** Configure the login access control settings for the WAAS device, as described in the [“Configuring Login Access Control Settings for WAAS Devices”](#) section on page 6-8.

- Step 3** Configure the administrative login authentication server settings on the WAAS device (if a remote authentication database is to be used). For example, specify the IP address of the remote RADIUS servers, TACACS+ servers, or Windows domain server that the WAAS device should use to authenticate administrative login requests, as described in the following sections:
- [Configuring RADIUS Server Authentication Settings, page 6-13](#)
 - [Configuring TACACS+ Server Authentication Settings, page 6-15](#)
 - [Configuring Windows Domain Server Authentication Settings, page 6-18](#)
- Step 4** Specify one or all of the following login authentication configuration schemes that the WAAS device should use to process administrative login requests:
- Specify the administrative login authentication scheme.
 - Specify the administrative login authorization scheme.
 - Specify the failover scheme for the administrative login authentication server (optional).

For example, specify which authentication database the WAAS device should check to process an administrative login request. See the “[Enabling Administrative Login Authentication and Authorization Schemes for WAAS Devices](#)” section on page 6-25.

**Caution**

Make sure that RADIUS, TACACS+, or Windows domain authentication is configured and operating correctly before disabling local authentication and authorization. If you disable local authentication and RADIUS, TACACS+, or Windows domain settings are not configured correctly, or if the RADIUS, TACACS+, or Windows domain server is not online, you may be unable to log in to the WAAS device.

You can enable or disable the local and the remote databases (TACACS+, RADIUS, and Windows domain) through the WAAS Central Manager GUI or the WAAS CLI. The WAAS device verifies whether all databases are disabled and, if so, sets the system to the default state (see [Table 6-1](#)). If you have configured the WAAS device to use one or more of the external third-party databases (TACACS+, RADIUS, or Windows domain authentication) for administrative authentication and authorization, make sure that you have also enabled the local authentication and authorization method on the WAAS device, and that the local method is specified as the last option; otherwise, the WAAS device will not go to the local authentication and authorization method by default if the specified external third-party databases are not reachable.

By default, local login authentication is enabled first. Local authentication and authorization uses locally configured login and passwords to authenticate administrative login attempts. The login and passwords are local to each WAAS device and are not mapped to individual usernames. When local authentication is disabled, if you disable all other authentication methods, local authentication is reenabled automatically.

You can disable local login authentication only after enabling one or more of the other administrative login authentication methods. However, when local login authentication is disabled, if you disable all other administrative login authentication methods, local login authentication is reenabled automatically. You cannot specify different administrative login authentication methods for console and Telnet connections.

We strongly recommend that you set the administrative login authentication and authorization methods in the same order. For example, configure the WAAS device to use RADIUS as the primary login method, TACACS+ as the secondary login method, Windows as the tertiary method, and the local method as the quaternary method for both administrative login authentication and authorization.

We strongly recommend that you specify the local method as the last method in your prioritized list of login authentication and authorization methods. By adhering to this practice, if the specified external third-party servers (TACACS+, RADIUS, or Windows domain servers) are not reachable, a WAAS administrator can still log in to a WAAS device through the local authentication and authorization method.

For more information on how to centrally configure administrative login authentication and authorization, see the following sections:

- [Configuring Login Access Control Settings for WAAS Devices, page 6-8](#)
- [Configuring Remote Authentication Server Settings for WAAS Devices, page 6-12](#)
- [Enabling Administrative Login Authentication and Authorization Schemes for WAAS Devices, page 6-25](#)

Configuring Login Access Control Settings for WAAS Devices

This section describes how to centrally configure remote login and access control settings for a WAAS device or device group. It includes the following sections:

- [Configuring Secure Shell Settings for WAAS Devices, page 6-8](#)
- [Disabling and Reenabling the Telnet Service for WAAS Devices, page 6-10](#)
- [Configuring Exec Timeout Settings for WAAS Devices, page 6-11](#)
- [Configuring Line Console Carrier Detection for WAAS Devices, page 6-12](#)

Configuring Secure Shell Settings for WAAS Devices

Secure Shell (SSH) consists of a server and a client program. Like Telnet, you can use the client program to remotely log in to a machine that is running the SSH server, but unlike Telnet, messages transported between the client and the server are encrypted. The functionality of SSH includes user authentication, message encryption, and message authentication.



Note

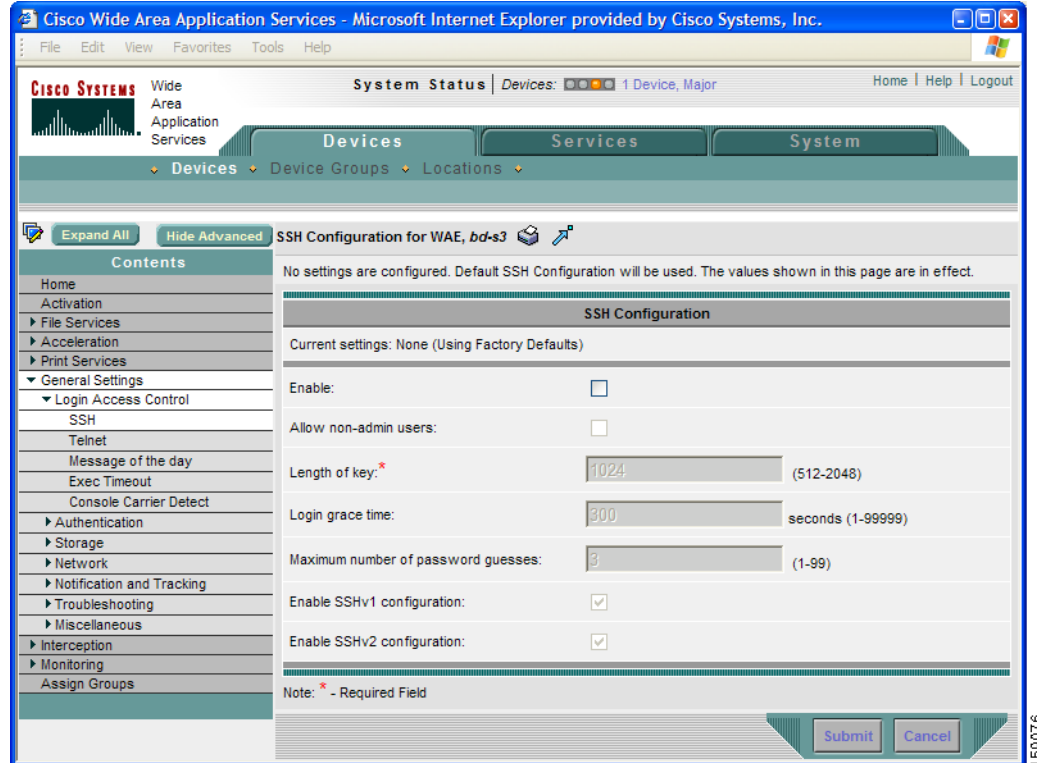
By default, the SSH feature is disabled on a WAAS device.

The SSH management window in the WAAS Central Manager GUI allows you to specify the key length, login grace time, and maximum number of password guesses allowed when logging in to a specific WAAS device or device group for configuration, monitoring, or troubleshooting purposes.

To centrally enable the SSH feature on a WAAS device or a device group, follow these steps:

- Step 1** From the WAAS Central Manager GUI, choose **Devices > Devices** (or **Devices > Device Groups**).
- Step 2** Click the **Edit** icon next to the device (or device group) for which you want to enable SSH.
- Step 3** Click **Expand All** above the Contents pane.
- Step 4** Click **Show Advanced** above the Contents pane.
- Step 5** In the Contents pane, choose **General Settings > Login Access Control > SSH**.
The SSH Configuration window appears. (See [Figure 6-3](#).)

Figure 6-3 SSH Configuration Window



- Step 6** Check the **Enable** check box to enable the SSH feature. SSH enables login access to the chosen WAAS device (or the device group) through a secure and encrypted channel.
- Step 7** Check the **Allow non-admin users** check box to allow non-administrative users to gain SSH access to the chosen device (or device group). By default, this option is disabled.



Note Nonadministrative users are non-superuser administrators. All non-superuser administrators only have restricted access to a WAAS device because their login accounts have a privilege level of 0. Superuser administrators have full access to a WAAS device because their login accounts have the highest level of privileges, a privilege level of 15.

- Step 8** In the Length of key field, specify the number of bits needed to create an SSH key. The default is 1024. When you enable SSH, be sure to generate both a private and a public host key, which client programs use to verify the server's identity. When you use an SSH client and log in to a WAAS device, the public key for the SSH daemon running on the device is recorded in the client machine known_hosts file in your home directory. If the WAAS administrator subsequently regenerates the host key by specifying the number of bits in the Length of key field, you must delete the old public key entry associated with the WAAS device in the known_hosts file before running the SSH client program to log in to the WAAS device. When you use the SSH client program after deleting the old entry, the known_hosts file is updated with the new SSH public key for the WAAS device.
- Step 9** In the Login grace time field, specify the number of seconds for which an SSH session will be active during the negotiation (authentication) phase between client and server before it times out. The default is 300 seconds.

Step 10 In the Maximum number of password guesses field, specify the maximum number of incorrect password guesses allowed per connection. The default is 3.

Although the value in the Maximum number of password guesses field specifies the number of allowed password guesses from the SSH server side, the actual number of password guesses for an SSH login session is determined by the combined number of allowed password guesses of the SSH server and the SSH client. Some SSH clients limit the maximum number of allowed password guesses to three (or to one in some cases), even though the SSH server allows more than this number of guesses. When you specify n allowed password guesses, certain SSH clients interpret this number as $n + 1$. For example, when configuring the number of guesses to two for a particular device, SSH sessions from some SSH clients will allow three password guesses.

Step 11 Specify whether the clients should be allowed to connect using the SSH protocol Version 1 or Version 2.

- To specify Version 1, check the **Enable SSHv1** check box.
- To specify Version 2, check the **Enable SSHv2** check box.



Note You can enable both SSH Version 1 and Version 2, or you can enable one version and not the other. You cannot disable both versions of SSH unless you disable the SSH feature by unchecking the **Enable** check box. (See [Step 6](#).)

Step 12 Click **Submit** to save the settings.

A “Click Submit to Save” message appears in red in the Current Settings line when there are pending changes to be saved after you have applied default or device group settings. You can also revert to the previously configured settings by clicking the **Reset** button. The **Reset** button is visible only when you have applied default or group settings to change the current device settings but have not yet submitted the changes.

If you try to exit this window without saving the modified settings, a warning dialog box prompts you to submit the changes. This dialog box only appears if you are using the Internet Explorer browser.

To configure SSH settings from the CLI, you can use the `ssh` and `ssh-key-generate` global configuration commands.

Disabling and Reenabling the Telnet Service for WAAS Devices

By default, the Telnet service is enabled on a WAAS device. You must use a console connection instead of a Telnet session to define device network settings on a WAAS device. However, after you have used a console connection to define the device network settings, you can use a Telnet session to perform subsequent configuration tasks.

To centrally disable the Telnet service on a WAAS device or a device group, follow these steps:

-
- Step 1** From the WAAS Central Manager GUI, choose **Devices > Devices** (or **Devices > Device Groups**).
 - Step 2** Click the **Edit** icon next to the device (or device group) for which you want to disable Telnet.
 - Step 3** Click **Expand All** above the Contents pane.
 - Step 4** Click **Show Advanced** to display all menu items in the Contents pane.
 - Step 5** In the Contents pane, choose **General Settings > Login Access Control > Telnet**. The Telnet Settings window appears.

Step 6 Uncheck the **Telnet Enable** check box to disable the terminal emulation protocol for remote terminal connection for the chosen device (or device group).

Step 7 Click **Submit** to save the settings.

A “Click Submit to Save” message appears in red next to the Current Settings line when there are pending changes to be saved after you have applied default or device group settings. You can also revert to the previously configured settings by clicking the **Reset** button. The **Reset** button is visible only when you have applied default or group settings to change the current device settings but have not yet submitted the changes.

If you try to exit this window without saving the modified settings, a warning dialog box prompts you to submit the changes. This dialog box only appears if you are using the Internet Explorer browser.

To centrally reenable the Telnet service on the device (or device group) at a later time, check the **Telnet Enable** check box in the Telnet Settings window and click **Submit**.

From the CLI, you can use the **no telnet enable** global configuration command to disable Telnet or the **telnet enable** global configuration command to enable it.

Configuring Exec Timeout Settings for WAAS Devices

To centrally configure the length of time that an inactive Telnet session remains open on a WAAS device or device group, follow these steps:

Step 1 From the WAAS Central Manager GUI, choose **Devices > Devices** (or **Devices > Device Groups**).

Step 2 Click the **Edit** icon next to the device (or device group) for which you want to configure the EXEC timeout.

Step 3 Click **Expand All** above the Contents pane.

Step 4 Click **Show Advanced** to display all menu items in the Contents pane.

Step 5 In the Contents pane, choose **General Settings > Login Access Control > Exec Timeout**.

Step 6 In the Exec Timeout field, specify the number of minutes after which an active session times out. The default is 15 minutes.

A Telnet session with a WAAS device can remain open and inactive for the period specified in this field. When the EXEC timeout period elapses, the WAAS device automatically closes the Telnet session.

Step 7 Click **Submit** to save the settings.

A “Click Submit to Save” message appears in red next to the Current Settings line when there are pending changes to be saved after you have applied default or device group settings. You can also revert to the previously configured settings by clicking the **Reset** button. The **Reset** button is visible only when you have applied default or group settings to change the current device settings but have not yet submitted the changes.

If you try to exit this window without saving the modified settings, a warning dialog box prompts you to submit the changes. This dialog box only appears if you are using the Internet Explorer browser.

To configure the Telnet session timeout from the CLI, you can use the **exec-timeout** global configuration command.

Configuring Line Console Carrier Detection for WAAS Devices

You need to enable carrier detection if you plan to connect the WAAS device to a modem for receiving calls.

**Note**

By default, this feature is disabled on a WAAS device.

To centrally enable console line carrier detection for a WAAS device or device group, follow these steps:

- Step 1** From the WAAS Central Manager GUI, choose **Devices > Devices** (or **Devices > Device Groups**).
- Step 2** Click the **Edit** icon next to the device (or device group) that you want to configure.
- Step 3** Click **Expand All** above the Contents pane.
- Step 4** Click **Show Advanced** to display all menu items in the Contents pane.
- Step 5** In the Contents pane, choose **General Settings > Login Access Control > Console Carrier Detect**. The Console Carrier Detect Settings window appears.
- Step 6** Check the **Enable console line carrier detection before writing to the console** check box to enable the window for configuration.
- Step 7** Click **Submit** to save the settings.

A message appears that explains that if a null-modem cable that has no carrier detect pin wired is being used, the WAE may appear unresponsive on the console until the carrier detect signal is asserted. To recover from a misconfiguration, the WAE should be rebooted and the 0x2000 bootflag should be set to ignore the carrier detect setting.
- Step 8** Click **OK** to continue.

To configure console line carrier detection from the CLI, you can use the **line** global configuration command.

Configuring Remote Authentication Server Settings for WAAS Devices

If you have determined that your login authentication scheme is to include one or more external authentication servers, you must configure these server settings before you can configure the authentication scheme in the WAAS Central Manager GUI. The following sections provide steps for configuring the RADIUS server, or the TACACS+ server, or the Windows Domain settings using the WAAS Central Manager GUI.

- [Configuring RADIUS Server Authentication Settings, page 6-13](#)
- [Configuring TACACS+ Server Authentication Settings, page 6-15](#)
- [Configuring Windows Domain Server Authentication Settings, page 6-18](#)

Configuring RADIUS Server Authentication Settings

RADIUS is a client/server authentication and authorization access protocol used by a network access server (NAS) to authenticate users attempting to connect to a network device. The NAS functions as a client, passing user information to one or more RADIUS servers. The NAS permits or denies network access to a user based on the response that it receives from one or more RADIUS servers. RADIUS uses the User Datagram Protocol (UDP) for transport between the RADIUS client and server.

RADIUS authentication clients reside on devices that are running WAAS software. When enabled, these clients send authentication requests to a central RADIUS server, which contains user authentication and network service access information.

You can configure a RADIUS key on the client and server. If you configure a key on the client, it must be the same as the one configured on the RADIUS servers. The RADIUS clients and servers use the key to encrypt all RADIUS packets transmitted. If you do not configure a RADIUS key, packets are not encrypted. The key itself is never transmitted over the network.

**Note**

For more information about how the RADIUS protocol operates, see RFC 2138, *Remote Authentication Dial In User Service (RADIUS)*.

RADIUS authentication usually occurs when an administrator first logs in to the WAAS device to configure the device for monitoring, configuration, or troubleshooting purposes. RADIUS authentication is disabled by default. You can enable RADIUS authentication and other authentication methods at the same time. You can also specify which method to use first.

**Tip**

WAAS Central Manager does not cache user authentication information. Therefore, the user is reauthenticated against the RADIUS server for every request. To prevent performance degradation caused by many authentication requests, install the WAAS Central Manager device in the same location as the RADIUS server, or as close as possible to it, to ensure that authentication requests can occur as quickly as possible.

To centrally configure RADIUS server settings for a WAAS device or device group, follow these steps:

- Step 1** From the WAAS Central Manager GUI, choose **Devices > Devices** (or **Devices > Device Groups**).
- Step 2** Click the **Edit** icon next to the name of the device (or device group) that you want to configure. The Contents pane appears on the left.
- Step 3** Click **Expand All** above the Contents pane.
- Step 4** Click **Show Advanced** to display all menu items in the Contents pane.
- Step 5** From the Contents pane, choose **General Settings > Authentication > RADIUS**. The RADIUS Server Settings window appears. (See [Figure 6-4](#).)

Figure 6-4 RADIUS Server Settings Window

- Step 6** In the Time to Wait field, specify how long the device or device group should wait for a response from the RADIUS server before timing out. The range is from 1 to 20 seconds. The default value is 5 seconds.
- Step 7** In the Number of Retransmits field, specify the number of attempts allowed to connect to a RADIUS server. The default value is 2 times.
- Step 8** In the Shared Encryption Key field, enter the secret key that is used to communicate with the RADIUS server.



Note If you configure a RADIUS key on the WAAS device (the RADIUS client), make sure that you configure an identical key on the external RADIUS server.

- Step 9** In the Server Name field, enter an IP address or hostname of the RADIUS server. Five different hosts are allowed.
- Step 10** In the Server Port field, enter a UDP port number on which the RADIUS server is listening. You must specify at least one port. Five different ports are allowed.
- Step 11** Click **Submit** to save the settings.

You can now enable RADIUS as an administrative login authentication and authorization method for this WAAS device or device group, as described in the “[Enabling Administrative Login Authentication and Authorization Schemes for WAAS Devices](#)” section on page 6-25.

To configure RADIUS settings from the CLI, you can use the **radius-server** global configuration command.

Configuring TACACS+ Server Authentication Settings

TACACS+ controls access to network devices by exchanging network access server (NAS) information between a network device and a centralized database to determine the identity of a user or an entity. TACACS+ is an enhanced version of TACACS, a UDP-based access-control protocol specified by RFC 1492. TACACS+ uses TCP to ensure reliable delivery and encrypt all traffic between the TACACS+ server and the TACACS+ daemon on a network device.

TACACS+ works with many authentication types, including fixed password, one-time password, and challenge-response authentication. TACACS+ authentication usually occurs when an administrator first logs in to the WAAS device to configure the WAE for monitoring, configuring, or troubleshooting.

When a user requests restricted services, TACACS+ encrypts the user password information using the MD5 encryption algorithm and adds a TACACS+ packet header. This header information identifies the packet type being sent (for example, an authentication packet), the packet sequence number, the encryption type used, and the total packet length. The TACACS+ protocol then forwards the packet to the TACACS+ server.

A TACACS+ server can provide authentication, authorization, and accounting functions. These services, while all part of TACACS+, are independent of one another, so a given TACACS+ configuration can use any or all of the three services.

When the TACACS+ server receives a packet, it does the following:

- Authenticates the user information and notifies the client that the login authentication has either succeeded or failed.
- Notifies the client that authentication will continue and that the client must provide additional information. This challenge-response process can continue through multiple iterations until login authentication either succeeds or fails.

You can configure a TACACS+ key on the client and server. If you configure a key on a WAAS device, it must be the same as the one configured on the TACACS+ servers. The TACACS+ clients and servers use the key to encrypt all TACACS+ packets transmitted. If you do not configure a TACACS+ key, packets are not encrypted.

TACACS+ authentication is disabled by default. You can enable TACACS+ authentication and local authentication at the same time.

The TACACS+ database validates users before they gain access to a WAAS device. TACACS+ is derived from the United States Department of Defense (RFC 1492) and is used by Cisco Systems as an additional control of nonprivileged and privileged mode access. The WAAS software supports TACACS+ only and not TACACS or Extended TACACS.



Tip

WAAS Central Manager does not cache user authentication information, so the user is reauthenticated against the TACACS+ server for every request. To prevent performance degradation caused by many authentication requests, install the WAAS Central Manager device in the same location as the TACACS+ server, or as close as possible to it, to ensure that authentication requests can occur as quickly as possible.

Configuring the TACACS+ Enable Password Attribute

The WAAS software CLI EXEC mode is used for setting, viewing, and testing system operations. It is divided into two access levels: user and privileged. To access privileged-level EXEC mode, enter the **enable** EXEC command at the user access level prompt and specify a privileged EXEC password (superuser or admin-equivalent password) when prompted for a password.

In TACACS+, there is an enable password feature that allows an administrator to define a different enable password per administrative-level user. If an administrative-level user logs in to the WAAS device with a normal-level user account (privilege level of 0) instead of an admin or admin-equivalent user account (privilege level of 15), that user must enter the admin password to access privileged-level EXEC mode.

```
WAE> enable
Password:
```



Note

This caveat applies even if the WAAS users are using TACACS+ for login authentication.

To centrally configure TACACS+ server settings on a WAAS device or device group, follow these steps:

- Step 1** From the WAAS Central Manager GUI, choose **Devices > Devices** (or **Devices > Device Groups**).
- Step 2** Click the **Edit** icon next to the name of the device (or device group) that you want to configure. The Contents pane appears on the left.
- Step 3** Click **Expand All** above the Contents pane.
- Step 4** Click **Show Advanced** to display all menu items in the Contents pane.
- Step 5** From the Contents pane, choose **General Settings > Authentication > TACACS+**. The TACACS+ Server Settings window appears. (See [Figure 6-5](#).)

Figure 6-5 TACACS+ Server Settings Window

- Step 6** Check the **Use ASCII Password Authentication** check box to use the ASCII password type for authentication.
- The default password type is PAP (Password Authentication Protocol). However, you can change the password type to ASCII when the authentication packets are to be sent in ASCII clear text format.
- Step 7** In the Time to Wait field, specify how long the device should wait before timing out. The range is from 1 to 20 seconds. The default value is 5 seconds.
- Step 8** In the Number of Retransmits field, specify the number of attempts allowed to connect to a TACACS+ server. The range is 1 to 3 times. The default value is 2 times.
- Step 9** In the Security Word field, enter the secret key that is used to communicate with the TACACS+ server.



Note If you configure a TACACS+ key on the WAAS device (the TACACS+ client), make sure that you configure an identical key on the external TACACS+ server.

- Step 10** In the Primary Server field, enter an IP address or hostname for the primary TACACS+ server.
- Step 11** In the Secondary Server field, enter an IP address or hostname for a secondary TACACS+ server.
- Step 12** In the Tertiary Server field, enter an IP address or hostname for a tertiary TACACS+ server.



Note You can specify up to two backup TACACS+ servers.

Step 13 Click **Submit** to save the settings.

You can now enable TACACS+ as an administrative login authentication and authorization method for this WAAS device or device group, as described in the [“Enabling Administrative Login Authentication and Authorization Schemes for WAAS Devices”](#) section on page 6-25.

To configure TACACS+ settings from the CLI, you can use the **tacacs** global configuration command.

Configuring Windows Domain Server Authentication Settings

A Windows domain controller can be configured to control access to the WAAS software services using either a challenge/response or shared secret authentication method. The system administrator can log in to the WAAS device by using an FTP, SSH, or Telnet session, or the WAAS Central Manager GUI with a single user account (username/password/privilege). RADIUS and TACACS+ authentication schemes can be configured simultaneously with Windows domain authentication. Logging of a variety of authentication login statistics can be configured when Windows domain authentication is enabled. The log files and the statistical counters and related information can be cleared at any time.

In a WAAS network, Windows domain authentication is used in the following cases:

- Log in to the WAAS Central Manager GUI
- Log in to the WAE Device Manager GUI
- CLI configuration on any WAAS device
- Disconnected mode
- Registration with the Windows Domain Controller

You can configure Windows authentication for the WAAS Central Manager device, a single WAAS device (for example, a Core WAE or an Edge WAE), or a group of devices. To configure Windows domain authentication on a WAAS device, you must configure a set of Windows domain authentication settings.



Note

Windows domain authentication is not performed unless a Windows domain server is configured on the WAAS device. If the device is not successfully registered, authentication and authorization do not occur.

Centrally Configuring Windows Domain Server Settings on a WAAS Device

You will need to know the name and IP address, or hostname, of the Windows domain controller that will be used for authentication.

To centrally configure Windows Domain server settings on a WAAS device or device group, follow these steps:

- Step 1** From the WAAS Central Manager GUI, choose **Devices > Devices** (or **Devices > Device Groups**).
- Step 2** Click the **Edit** icon next to the name of the device (or device group) that you want to configure. The Contents pane appears on the left.
- Step 3** Click **Expand All** above the Contents pane.
- Step 4** Click **Show Advanced** to display all menu items in the Contents pane.

Step 5 From the Contents pane, choose **General Settings > Authentication > Windows Domain**. The Windows Domain Server Settings window appears. (See [Figure 6-6](#).)

Figure 6-6 Windows Server Settings Window

The screenshot displays the Cisco Wide Area Application Services (WAAS) configuration interface in a Microsoft Internet Explorer browser. The browser title is "Cisco Wide Area Application Services - Microsoft Internet Explorer provided by Cisco Systems, Inc.". The interface shows the "System Status" bar at the top right, indicating "2 Devices, Major". The main navigation pane on the left includes "Contents" with a tree view showing "General Settings > Authentication > Windows Domain" selected. The main content area is titled "Windows Domain Settings for WAE, tharring-docs-ce10". It displays "Current applied settings from WAE, tharring-docs-ce10" and an informational message: "Related settings: Workgroup: UNDEFINED, WINS server: UNDEFINED". Below this, there are several configuration options:

- "Windows authentication for WAN Failure (Disconnected Mode):" with a checkbox and an informational message "Domain Controller must be accessible".
- "Windows authentication for login and configuration:" with a checkbox.
- "Current status: Login - disabled, Configuration - disabled".
- "Administrative group for normal users:" and "Administrative group for super users:" with text input fields.
- "NTLM enabled:" with a checkbox.
- "NTLM version:" with a dropdown menu set to "V1".
- "Kerberos enabled:" with a checkbox.
- "Realm: *" with a text input field and the instruction "(Enter fully qualified name)".
- "Key Distribution Center: *" with a text input field and the instruction "(Enter fully qualified name or IP, optionally followed by :port)".
- "Organizational Unit:" with a text input field.
- "Domain Controller: *" with a text input field and the instruction "(Enter name only, not IP)".

 A section titled "Registration with Domain Controller" contains an informational message: "'Register' will send an immediate request to the device(s) to perform domain registration with the specified user name and password. It is recommended to verify the settings above were successfully configured prior to registration (wait for poll rate, 5 min by default, and then refresh the page)." Below this are three text input fields: "Domain administrator username: *" (with instruction "(Enter username, domain/username or domain+username)"), "Domain administrator password: *", and "Confirm password: *". There are "Register" and "Show Authentication Status" buttons. At the bottom, there are "Submit" and "Cancel" buttons. A note at the bottom left states "Note: * - Required Field".



Note

If the related WINS server and the workgroup or domain name have not been defined for the chosen device (or device group), an informational message is displayed at the top of this window to inform you that these related settings are currently not defined, as shown in [Figure 6-6](#). To specify that these be related, choose **General Settings > Network > Windows Name Services**.

- Step 6** Check the **Windows authentication for WAN Failure (Disconnected Mode)** check box to enable content request authentication in disconnected mode.

When this feature is enabled, the Windows domain server authenticates the content request in disconnected mode. By default, this feature is disabled on a WAE.

If you enable this feature, we recommend that you also disable automatic account password changes for the WAE. For more information, see the [“Disabling the Automatic Machine Account Password Changes for the Edge WAE”](#) section on page 6-22.

- Step 7** Check the **Windows authentication for login and configuration** check box to enable Windows authentication for management login and configuration on the WAE. By default, this feature is disabled on a WAE.

- Step 8** Specify an administrative group for normal users (non-superuser administrators) who only have restricted access to the chosen device (or device group) because their administrator user account only has a privilege level of 0 by entering the name of the group in the **Administrative group for normal users** field.



Note By default, there are not predefined user groups for Windows domain authorization configured on a WAE.

- Step 9** Specify an administrative group for superusers (superuser administrators) who have unrestricted access to the chosen device (or device group) because their administrator user account has a privilege level of 15 by entering the name of the group in the **Administrative group for superusers** field.



Note In addition to configuring Windows domain administrative group on a WAE, you must configure the Windows domain administrative group on your Microsoft Windows 2000 or 2003 server. You must create a Windows Domain administrative superuser group and a normal user group. Make sure that the group scope for the superuser group is set to global, assign user member to newly created administrative group, and add the user account (for example, the winsuper user) to the Windows domain superuser group. For more information about how to configure the Windows domain administrative group on your Windows server, see your Microsoft documentation.

When a user attempts to access this WAE through a Telnet session, FTP, or SSH session, the WAE is now configured to use the Active Directory user database to authenticate a request for administrative access.

- Step 10** Select NTLM or Kerberos as a shared secure authentication method for administrative logins to the chosen device (or device group), as follows:



Note Kerberos version 5 is used for Windows systems running Windows 2000 or higher with users logging in to domain accounts.

- To enable NTLM, check the **NTLM enabled** check box.
- To select NTLM version 1, check the **NTLM enabled** check box. NTLM version 1 is selected by default.

NTLM version 1 is used for all Windows systems, including legacy systems such as Windows 98 with Active Directory, Windows NT, and more recent Windows systems, such as Windows 2000, Windows XP, and Windows 2003. We recommend the use of NTLM version 1. If NTLM version 1 is not available or not allowed (version 1 is less secure), use Kerberos or NTLM version 2.

- To select NTLM version 2, choose **V2** from the drop-down list.

NTLM version 2 is used for Windows systems running Windows 98 with Active Directory, Windows NT 4.0 (Service Pack 4 or higher), Windows XP, Windows 2000, and Windows 2003. Enabling NTLM version 2 support on the WAAS print server will not allow access to clients who use NTLM or LM.



Caution Enable NTLM version 2 support in the print server only if all the clients' security policy has been set to Send NTLMv2 responses only/Refuse LM and NTLM.

- To select Kerberos, check the **Kerberos enable** check box. In the Realm field, enter the fully qualified name of the realm in which the WAAS device resides. In the Key Distribution center, enter the fully qualified name or the IP address of the distribution center for the Kerberos key. If desired, enter the name of the organizational unit in the Organizational Unit field.

All Windows 2000 domains are also Kerberos realms. Because the Windows 2000 domain name is also a DNS domain name, the Kerberos realm name for the Windows 2000 domain name is always in uppercase letters. This capitalization follows the recommendation for using DNS names as realm names in the Kerberos Version 5 protocol document (RFC-1510) and affects only interoperability with other Kerberos-based environments.

Step 11 In the Domain Controller field, enter the name of the Windows Domain Controller.

Step 12 Click **Submit**.



Note Make sure that you click **Submit** now so that the specified changes are committed to the WAAS Central Manager database, but the Domain Administrator's username and password, which you will enter as the next step (Step 13), is not stored in the WAAS Central Manager's database.

Step 13 Register the chosen device (or device group) with the Windows Domain Controller, as follows:

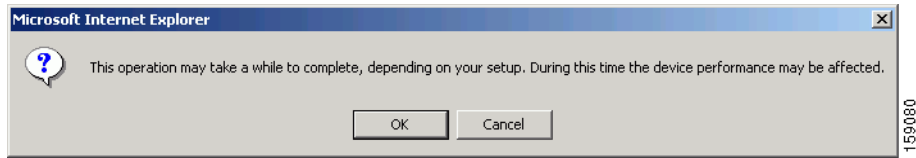
- a. In the Domain Administrator username field, enter the administrative username (the domain\username or the domain name plus the username) of the specified Windows Domain Controller.
- b. In the Domain Administrator password field, enter the administrative password of the specified Windows Domain Controller.
- c. In the Confirm password field, reenter the administrative password of the specified Windows Domain Controller.
- d. Click the **Register** button.



Note When you click the **Register** button, the WAAS Central Manager immediately sends a registration request to the WAAS device (or device group) using SSH (the specified domain administrator password is encrypted by SSH). The registration request instructs the device to perform domain registration with the specified Windows Domain Controller using the specified Domain Administrator's username and password. If the device is accessible (if it is behind a NAT and has an external IP address), the registration request is performed by the device (or device group).

- e. To check the status of the registration request, click the **Show Authentication Status** button. A dialog box appears prompting if you want to continue with this request to view the status of the authentication request. (See [Figure 6-7](#).)

Figure 6-7 Confirmation Dialog Box



- f. Click **OK** to continue or click **Cancel** to cancel the request.

You can now enable Windows Domain as an administrative login authentication and authorization method for this device or device group, as described in the “[Enabling Administrative Login Authentication and Authorization Schemes for WAAS Devices](#)” section on page 6-25.

We recommend that you use the WAAS Central Manager GUI instead of the WAAS CLI to configure Windows Domain server settings, but if you want to use the CLI, see the following commands in the *Cisco Wide Area Application Services Command Reference*: **windows-domain**, **kerberos** (if you are using Kerberos as a shared secure authentication method), and **authentication content-request windows-domain disconnected-mode enable** (to enable content request authentication in disconnected mode).

Next, register the WAAS device with the Windows domain server that you configured, and then verify it, by using the following commands:

```
WAE# windows-domain diagnostics net "ads join -U AdminUsername%AdminPassword"
WAE# windows-domain diagnostics net "ads testjoin -U AdminUsername%AdminPassword"
```

Finally, enable Windows Domain as the administrative login authentication and authorization configuration by using the following commands:

```
WAE(config)# authentication login windows-domain enable primary
WAE(config)# authentication configuration windows-domain enable primary
```

Disabling the Automatic Machine Account Password Changes for the Edge WAE

In a WAAS network where a Windows domain controller is configured for authentication and Disconnected Mode is enabled on an Edge WAE, the domain controller authenticates content requests in the event of a WAN failure. By default, Windows domain controllers enforce automatic machine account password changes as part of the authentication process. The machine account password for the Edge WAE is automatically negotiated and changed between the Edge WAE and the domain controller every seven days. However, if the authentication service is down, this process may not occur, and the machine account password for the Edge WAE may expire.

To prevent this situation, we recommend that you disable automatic machine account password changes for the Edge WAE. The procedure that follows describes how to disable automatic machine account password changes for Windows XP and Windows Server 2003 using Group Policy Editor. Refer to Microsoft’s Help and Support page for details on how to disable automatic machine account password changes for the other Windows operating systems.

To disable the automatic machine account password changes for the Edge WAE using Group Policy Editor, follow these steps:

-
- Step 1** On the Windows domain controller, click **Start**, then select **Run**.
 - Step 2** Type **Gpedit** at the prompt, and then click OK.
 - Step 3** Expand the Local Computer Policy, Windows Settings, Security Settings, Local Policies, Security Settings, Local Policies, Security Options.
 - Step 4** Configure the following setting: Domain Member: Disable machine account password changes (DisablePasswordChange).
-

LDAP Server Signing

LDAP server signing is a configuration option of the Microsoft Windows Server's Network security settings. This option controls the signing requirements for Lightweight Directory Access Protocol (LDAP) clients. LDAP signing is used to verify that an intermediate party did not tamper with the LDAP packets on the network and to guarantee that the packaged data comes from a known source. Windows Server 2003 administration tools use LDAP signing to secure communications between running instances of these tools and the servers that they administer.

By using the Transport Layer Security (TLS, RFC 2830) protocol to provide communications privacy over the Internet, client/server applications can communicate in a way that prevents eavesdropping, tampering, or message forging. TLS v1 is similar to Secure Sockets Layer (SSL). TLS offers the same encryption on regular LDAP connections (ldap://:389) as SSL, while operating on a secure connection (ldaps://:636). A server certificate is used by the TLS protocol to provide a secure, encrypted connection to the LDAP server. A client certificate and key pair are required for client authentication.

In the WAAS software, login authentication with Windows 2003 domains is supported when the *LDAP server signing requirements* option for the Domain Security Policy is set to "Require signing." The LDAP server signing feature allows the WAE to join the domain and authenticate users securely.



Note

When you configure your Windows domain controller to require an LDAP signature, you must also configure LDAP signing on the client WAE. By not configuring the client to use LDAP signatures, communication with the server is affected, and user authentication, group policy settings, and logon scripts might fail. Install the Certification Authority service on the Microsoft server with the server's certificate (**Programs > Administrative Tools > Certification Authority**). Enable the LDAP server signing requirements property on the Microsoft server (**Start > Programs > Administrative Tools > Domain Controller Security Policy**). In the displayed window, choose **Require signing** from the drop-down list, and click **OK**.

For information about how to configure your Windows domain controller to require an LDAP signature, see your Microsoft documentation.

Configuring LDAP Signing on the Client WAEs

You can configure a security setting on Windows 2003 domain controllers to require clients (such as WAEs) to sign LDAP requests. Because unsigned network traffic can be intercepted and manipulated by outside parties, some organizations require LDAP server signing to prevent man-in-the-middle attacks on their LDAP servers. You can only configure LDAP signing on a single WAE; it cannot be configured

at a system level. In addition, you must configure LDAP signing on a WAE through the WAAS CLI; you cannot configure LDAP signing through any of the WAAS GUIs (either the WAAS Central Manager GUI or the WAE Device Manager GUI).

By default, LDAP server signing is disabled on a WAE. To enable this feature on a WAE, follow these steps:

Step 1 Enable LDAP server signing on the WAE.

```
WAE# configure terminal
WAE(config)# smb-conf section "global" name "ldap ssl" value "start_tls"
```

Step 2 Save the configuration on the WAE.

```
WAE(config)# exit
WAE# copy run start
```

Step 3 Check the current running LDAP client configuration on the WAE.

```
WAE# show smb-conf
```

Step 4 Register the WAE with the Windows domain.

```
WAE# windows-domain diagnostics net "ads join -U Administrator%password"
```

Step 5 Enable user login authentication on the WAE.

```
WAE# configure
WAE(config)# authentication login windows-domain enable primary
```

Step 6 Enable user login authorization on the WAE.

```
WAE(config)# authentication configuration windows-domain enable primary
```

Step 7 Check the current configuration for login authentication and authorization on the WAE.

```
WAE# show authentication user
Login Authentication: Console/Telnet/Ftp/SSH Session
-----
local                enabled (secondary)
Windows domain      enabled (primary)
Radius              disabled
Tacacs+             disabled

Configuration Authentication: Console/Telnet/Ftp/SSH Session
-----
local                enabled (primary)
Windows domain      enabled (primary)
Radius              disabled
Tacacs+             disabled
```

The WAE is now configured to authenticate Active Directory users. Active Directory users can use Telnet, FTP, or SSH to connect to the WAE or they can access the WAE through the WAAS GUIs (WAAS Central Manager GUI or the WAE Device Manager GUI).

Step 8 View statistics that are related to Windows domain user authentication. Statistics increment after each user authentication attempt.

```
WAE# show statistics windows-domain
Windows Domain Statistics
-----
Authentication:
  Number of access requests:          9
  Number of access deny responses:    3
```



```

Number of access allow responses:          6
Authorization:
Number of authorization requests:         9
Number of authorization failure responses: 3
Number of authorization success responses: 6
Accounting:
Number of accounting requests:            0
Number of accounting failure responses:    0
Number of accounting success responses:    0

```

```

WAE# show statistics authentication
Authentication Statistics
-----
Number of access requests:          9
Number of access deny responses:    3
Number of access allow responses:   6

```

- Step 9** Use the **clear statistics EXEC** command to clear the statistics on the WAE, as follows:
- To clear all of the login authentication statistics, enter the **clear statistics authentication EXEC** command.
 - To clear only the statistics that are related to Windows domain authentication, enter the **clear statistics windows-domain EXEC** command.
 - To clear all of the statistics, enter the **clear statistics all EXEC** command.

Disabling LDAP Server Signing on a Client WAE

To disable LDAP server signing on a WAE, follow these steps:

- Step 1** Unregister the WAE from the Windows domain.
- ```
WAE# windows-domain diagnostics net "ads leave -U Administrator"
```
- Step 2** Disable user login authentication.
- ```
WAE# configure
WAE(config)# no authentication login windows-domain enable primary
```
- Step 3** Disable LDAP signing on the WAE.
- ```
WAE(config)# no smb-conf section "global" name "ldap ssl" value "start_tls"
```

## Enabling Administrative Login Authentication and Authorization Schemes for WAAS Devices

This section describes how to centrally enable the various administrative login authentication and authorization schemes (the authentication configuration) for a WAAS device or device group.

**Caution**

Make sure that RADIUS, TACACS+, or Windows domain authentication is configured and operating correctly before disabling local authentication and authorization. If you disable local authentication and if RADIUS, TACACS+, or Windows domain authentication is not configured correctly, or if the RADIUS, TACACS+, or Windows domain server is not online, you may be unable to log in to the WAAS device.

By default, a WAAS device uses the local database to authenticate and authorize administrative login requests. The WAAS device verifies whether all authentication databases are disabled and if so, sets the system to the default state. For information on this default state, see the [“Default Administrative Login Authentication and Authorization Configuration”](#) section on page 6-5.

**Note**

You must configure the TACACS+, or RADIUS, or Windows server settings for the WAAS device (or device group) before you configure and submit these settings. See the [“Configuring TACACS+ Server Authentication Settings”](#) section on page 6-15, the [“Configuring RADIUS Server Authentication Settings”](#) section on page 6-13, and the [“Configuring Windows Domain Server Authentication Settings”](#) section on page 6-18 for information on how to configure these server settings on a WAAS device or device group.

By default, WAAS devices fail over to the secondary method of administrative login authentication whenever the primary administrative login authentication method fails. You change this default login authentication failover method through the WAAS Central Manager GUI, as follows:

- To change the default for a WAAS device, choose **Devices > Devices**. Click the **Edit** icon next to the name of the WAAS device for which you want to change the default login authentication failover method, and then choose **General Settings > Authentication > Authentication Methods** from the Contents pane. Check the **Enable Failover Server Unreachable** box in the displayed window and click **Submit**.
- To change the default for a device group, choose **Devices > Device Group**. Click the **Edit** icon next to the name of the device group for which you want to change the default login authentication failover method, and then choose **General Settings > Authentication > Authentication Methods** from the Contents pane. Check the **Enable Failover Server Unreachable** box in the displayed window and click **Submit**.

After you enable the failover server unreachable option, the WAAS device (or the devices in the device group) queries the next authentication method only if the administrative login authentication server is unreachable, not if authentication fails for some other reason.

**Note**

To use the login authentication failover feature, you must set TACACS+, RADIUS, or Windows domain as the primary login authentication method, and local as the secondary login authentication method.

If the failover due to unreachable server option is *enabled*, follow these guidelines:

- Only two login authentication schemes (a primary and secondary scheme) can be configured on the WAAS device.
- The WAAS device (or the devices in the device group) fails over from the primary authentication scheme to the secondary authentication scheme only if the specified authentication server is unreachable.
- Configure the local database scheme as the secondary scheme for both authentication and authorization (configuration).

For example, if the failover due to an unreachable server option is enabled and RADIUS is set as the primary login authentication scheme and local is set as the secondary login authentication scheme, the following events occur:

1. When the WAAS device (or the devices in the device group) receives an administrative login request, it queries the external RADIUS authentication server.
2. One of the following occurs:
  - a. If the RADIUS server is reachable, the WAAS device (or the devices in the device group) uses this RADIUS database to authenticate the administrator.
  - b. If the RADIUS server is not reachable, the WAAS device (or the devices in the device group) tries the secondary authentication scheme (that is, it queries its local authentication database) to authenticate the administrator.



---

**Note** The local database is contacted for authentication only if this RADIUS server is not available. In any other situation (for example, if the authentication fails in the RADIUS server), the local database is not contacted for authentication.

---

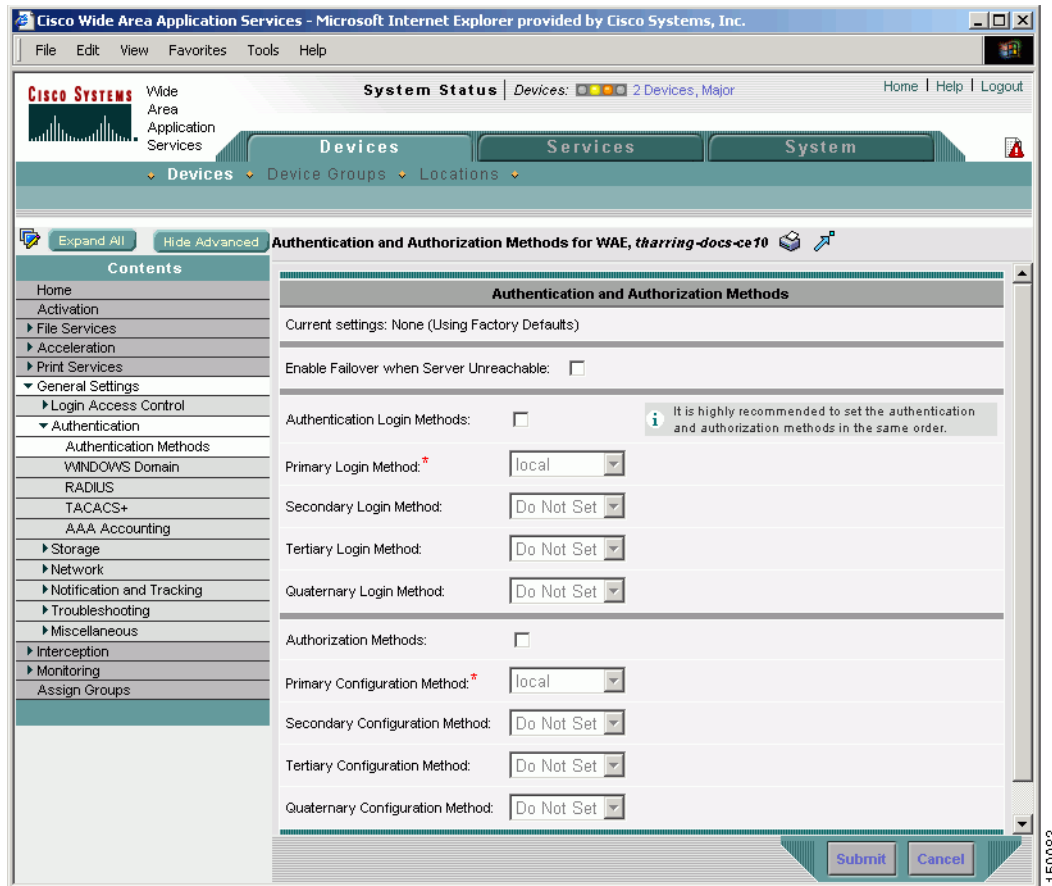
Conversely, if the failover due to unreachable server option is *disabled*, then the WAAS device (or the devices in the device group) contacts the secondary authentication database regardless of the reason why the authentication failed with the primary authentication database.

If all the authentication databases are enabled for use, then all the databases are queried in the order of priority selected and based on the failover reason. If no failover reason is specified, then all the databases are queried in the order of their priority. For example, first the primary authentication database is queried, then the secondary authentication database is queried, then the tertiary database is queried, and finally the quaternary authentication database is queried.

To specify the login authentication and authorization scheme for a WAAS device or device group, follow these steps:

- 
- Step 1** From the WAAS Central Manager GUI, choose **Devices > Devices** (or **Devices > Device Groups**).
  - Step 2** Click the **Edit** icon next to the name of the device (or the device group) that you want to configure. The Contents pane appears on the left.
  - Step 3** Click **Expand All** above the Contents pane.
  - Step 4** Click **Show Advanced** to display all menu items in the Contents pane.
  - Step 5** From the Contents pane, choose **General Settings > Authentication > Authentication Methods**. The Authentication and Authorization Methods window appears. (See [Figure 6-8](#).)

Figure 6-8 Authentication and Authorization Methods Window



**Step 6** Check the **Enable Failover Server Unreachable** check box to query the secondary authentication database only if the primary authentication server is unreachable.

To use this feature, you must set TACACS+, RADIUS, or Windows domain as the primary authentication method and local as a secondary authentication method. Make sure that you configure the local method as a secondary scheme for both authentication and authorization (configuration).

**Step 7** Check the **Authentication Login Methods** check box to enable authentication privileges using the local, TACACS+, RADIUS, or WINDOWS databases.

**Step 8** Specify the order of the login authentication methods that the chosen device or device group are to use, as follows:

- a. From the Primary Login Method drop-down list, choose **local**, **TACACS+**, **RADIUS**, or **WINDOWS**. This option specifies the first method that the chosen device (or the device group) should use for administrative login authentication.
- b. From the Secondary Login Method drop-down list, choose **local**, **TACACS+**, **RADIUS**, or **WINDOWS**. This option specifies the method that the chosen device (or the device group) should use for administrative login authentication if the primary method fails.
- c. From the Tertiary Login Method drop-down list, choose **local**, **TACACS+**, **RADIUS**, or **WINDOWS**. This option specifies the method that the chosen device (or the device group) should use for administrative login authentication if both the primary and the secondary methods fail.

- d. From the Quaternary Login Method drop-down list, choose **local**, **TACACS+**, **RADIUS**, or **WINDOWS**. This option specifies the method that the chosen device (or device group) should use for administrative login authentication if the primary, secondary, and tertiary methods all fail.



**Note** We strongly recommend that you specify the local method as the last method in your prioritized list of login authentication and authorization methods. By adhering to this practice, the WAAS administrator will be able to still log in to a WAAS device (or the devices in the device groups) through the local authentication and authorization method if the specified external third-party servers (TACACS+, RADIUS, or Windows domain servers) are not reachable.

- Step 9** Check the **Authorization Methods** check box to enable authorization privileges using the local, TACACS+, RADIUS, or WINDOWS databases.



**Note** Authorization privileges apply to console and Telnet connection attempts, secure FTP (SFTP) sessions, and Secure Shell (SSH, Version 1 and Version 2) sessions.

- Step 10** Specify the order of the login authorization (configuration) methods that the chosen device (or the device group) should use.



**Note** We strongly recommend that you set the administrative login authentication and authorization methods in the same order. For example, configure the WAAS device (or device group) to use RADIUS as the primary login method, TACACS+ as the secondary login method, Windows as the tertiary method, and the local method as the quaternary method for both administrative login authentication and authorization.

- a. From the Primary Configuration Method drop-down list, choose **local**, **TACACS+**, **RADIUS**, or **WINDOWS**. This option specifies the first method that the chosen device (or the device group) should use to determine authorization privileges.



**Note** If you have checked the **Enable Failover Server Unreachable** check box ([Step 6](#)), make sure that you choose **TACACS+ or RADIUS** from the Primary Configuration Method drop-down list to configure either the TACACS+ or RADIUS method as the primary scheme for authorization (configuration).

- b. From the Secondary Configuration Method drop-down list, choose **local**, **TACACS+**, **RADIUS**, or **WINDOWS**. This option specifies the method that the chosen device (or the device group) should use to determine authorization privileges if the primary method fails.



**Note** If you have checked the **Enable Failover Server Unreachable** check box ([Step 6](#)), make sure that you choose **local** from the Secondary Configuration Method drop-down list to configure the local method as the secondary scheme for authorization (configuration).

- c. From the Tertiary Configuration Method drop-down list, choose **local**, **TACACS+**, **RADIUS**, or **WINDOWS**. This option specifies the method that the chosen device (or the device group) should use to determine authorization privileges if both the primary and secondary methods fail.

- d. From the Quaternary Configuration Method drop-down list, choose **local**, **TACACS+**, **RADIUS**, or **WINDOWS**. This option specifies the method that the chosen device (or device group) should use to determine authorization privileges if the primary, secondary, and tertiary methods all fail.

**Step 11** Click **Submit** to save the settings.

---

To configure the login authentication and authorization scheme from the CLI, you can use the **authentication** global configuration command.

## Configuring AAA Accounting for WAAS Devices

Accounting tracks all user actions and when the actions occurred. It can be used for an audit trail or for billing for connection time or resources used (bytes transferred). Accounting is disabled by default.

The WAAS accounting feature uses TACACS+ server logging. Accounting information is sent to the TACACS+ server only, not to the console or any other device. The syslog file on the WAAS device logs accounting events locally. The format of events stored in the syslog is different from the format of accounting messages.

The TACACS+ protocol allows effective communication of AAA information between WAAS devices and a central server. It uses TCP for reliable connections between clients and servers. WAAS devices send authentication and authorization requests, as well as accounting information to the TACACS+ server.



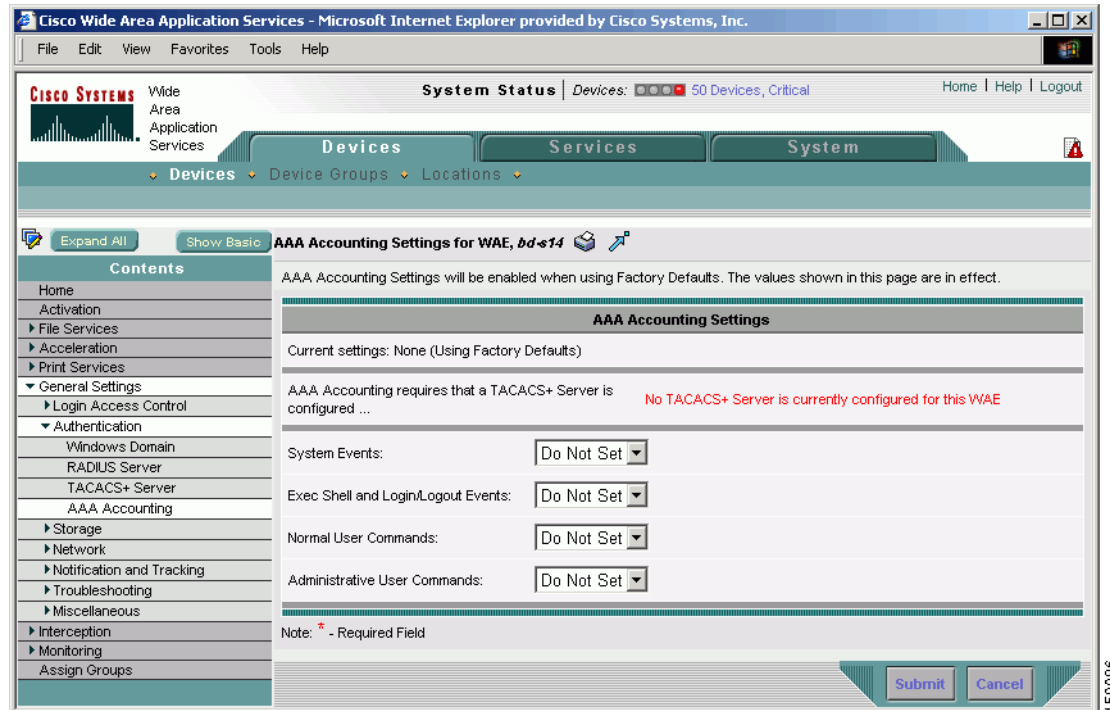
### Note

Before you can configure the AAA accounting settings for a WAAS device, you must first configure the TACACS+ server settings for the WAAS device. (See the [“Configuring TACACS+ Server Authentication Settings”](#) section on page 6-15.)

To centrally configure AAA accounting settings for a WAAS device or device group, follow these steps:

- Step 1** From the WAAS Central Manager GUI, choose **Devices > Devices** (or **Devices > Device Groups**).
- Step 2** Click the **Edit** icon next to the name of the device (or the device group) that you want to configure.
- Step 3** Click **Expand All** above the Contents pane.
- Step 4** Click **Show Advanced** to display all menu items in the Contents pane.
- Step 5** In the Contents pane, choose **General Settings > Authentication > AAA Accounting**. The AAA Accounting Settings window appears. (See [Figure 6-9](#).)

Figure 6-9 AAA Accounting Settings Window



- Step 6** From the **System Events** drop-down list, choose a keyword to specify when the chosen device (or the device group) should track system-level events that are not associated with users, such as reloads, and to activate accounting for system events.
- Step 7** From the **Exec Shell and Login/Logout Events** drop-down list choose a keyword to specify when the chosen device (or the device group) should track EXEC shell and user login and logout events and to activate accounting for EXEC mode processes. Reports include username, date, start and stop times, and the WAAS device IP address.
- Step 8** From the **Normal User Commands** drop-down list, choose a keyword to specify when the chosen device (or the device group) should track all the commands at the normal user privilege level (privilege level 0) and to activate accounting for all commands at the non-superuser administrative (normal user) level.
- Step 9** From the **Administrative User Commands** drop-down list, choose a keyword to specify when the chosen device (or the device group) should track all commands at the superuser privilege level (privilege level 15) and to activate accounting for all commands at the superuser administrative user level.

**Caution**

Before using the **wait-start** option, make sure that the WAAS device is configured with the TACACS+ server and is able to successfully contact the server. If the WAAS device cannot contact a configured TACACS+ server, it might become unresponsive.

Table 6-2 describes the event type options.

**Table 6-2** *Event Types for AAA Accounting*

| GUI Parameter             | Function                                                                                                                                                                                                                                                                                                                                                                    |
|---------------------------|-----------------------------------------------------------------------------------------------------------------------------------------------------------------------------------------------------------------------------------------------------------------------------------------------------------------------------------------------------------------------------|
| <b>Event Type Options</b> |                                                                                                                                                                                                                                                                                                                                                                             |
| stop-only                 | The WAAS device sends a stop record accounting notice at the end of the specified activity or event to the TACACS+ accounting server.                                                                                                                                                                                                                                       |
| start-stop                | The WAAS device sends a start record accounting notice at the beginning of an event and a stop record at the end of the event to the TACACS+ accounting server.<br><br>The start accounting record is sent in the background. The requested user service begins regardless of whether or not the start accounting record was acknowledged by the TACACS+ accounting server. |
| wait-start                | The WAAS device sends both a start and a stop accounting record to the TACACS+ accounting server. However, the requested user service does not begin until the start accounting record is acknowledged. A stop accounting record is also sent.                                                                                                                              |
| Do Not Set                | Accounting is disabled for the specified event.                                                                                                                                                                                                                                                                                                                             |

**Step 10** Click **Submit** to save the settings.

To configure AAA accounting settings from the CLI, you can use the **aaa accounting** global configuration command.

## Viewing Audit Trail Logs

The WAAS Central Manager device logs user activity in the system. The only activities that are logged are those that change the WAAS network. For more information on viewing a record of user activity on your WAAS system, see the “[Viewing the Audit Trail Log](#)” section on page 15-17.