



## CHAPTER 2

# Using Homepage

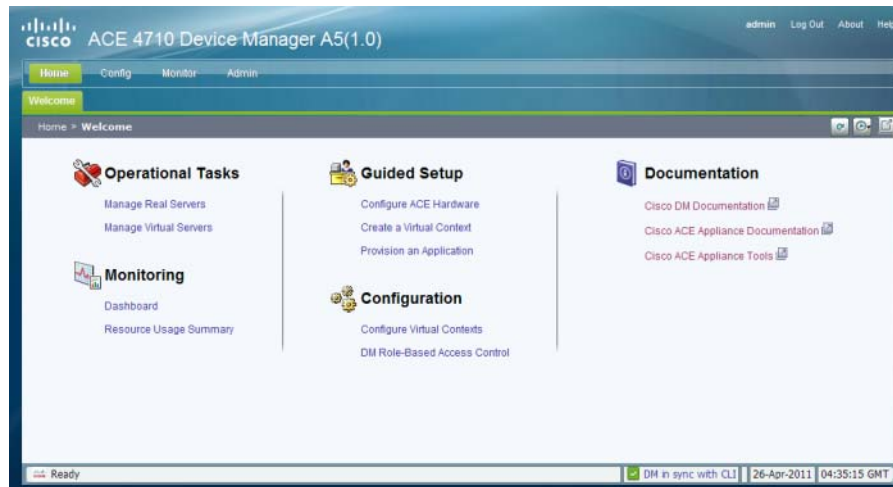
---

Homepage is a launching point for quick access to selected areas within Cisco Device Manager (DM). It allows you to have quick access to the following operations and guided setup tasks in DM:

- Operational tasks that you can access:
  - The Real Servers table to view information for each configured real server, activate or suspend real servers listed in the table, or modify the server weight.
  - The Virtual Servers table to view information for each configured virtual server and to activate or suspend virtual servers listed in the table.
- Monitoring—View the system dashboard for health, usage, and performance information related to the ACE appliance, and system traffic resource usage.
- Guided setup tasks that you can launch:
  - The Cisco Application Control Engine (ACE) Hardware Setup task to configure ACE devices that are new to the network by establishing network connectivity in either standalone or high-availability (HA) deployments.
  - The Virtual Context Setup task to create and connect an ACE virtual context.
  - The Application Setup task to configure end-to-end load-balancing for your application.
- Configuration—Tasks that allow you to configure system attributes for a virtual context, and control a user's access to the ACE.
- Documentation—Quick links to DM and ACE appliance user documentation on [www.cisco.com](http://www.cisco.com), and the local ACE appliance toolpage.

The DM Homepage (see [Figure 2-1](#)) is the first page that appears in DM after you log in.

**Figure 2-1** Homepage Window



[Table 2-1](#) identifies the Homepage links, associated pages in DM, and related topics that can be found in this document.

**Table 2-1** Homepage Links

Homepage Link	DM Page	Related Topics
<b>Operational Tasks</b>		
Manage Real Servers	Config > Operations > Real Servers	<a href="#">Managing Real Servers, page 6-9</a>
Manage Virtual Servers	Config > Operations > Virtual Servers	<a href="#">Managing Virtual Servers, page 5-63</a>
<b>Monitoring</b>		
Dashboard	Monitor > Virtual Contexts > Dashboard > System Dashboard	<a href="#">ACE System Dashboard, page 14-3</a>
Resource Usage Summary	Monitor > Virtual Contexts > Resource Usage > Connections	<a href="#">Monitoring System Traffic Resource Usage, page 14-19</a>
<b>Guided Setup</b>		
Configure ACE Hardware	Config > Guided Setup > ACE Hardware Setup	<a href="#">Using ACE Hardware Setup, page 3-3</a>
Create a Virtual Context	Config > Guided Setup > Virtual Context Setup	<a href="#">Using Virtual Context Setup, page 3-7</a>
Provision an Application	Config > Guided Setup > Application Setup	<a href="#">Using Application Setup, page 3-9</a>
<b>Configuration</b>		
Configure Virtual Contexts	Config > Virtual Contexts	<a href="#">Configuring Virtual Context Primary Attributes, page 4-11</a>
DM Role-Based Access Control	Adman > Role-Based Access Control > Users	<a href="#">Managing Users, page 15-7</a>

Table 2-1 Homepage Links (continued)

Homepage Link	DM Page	Related Topics
<b>Documentation</b>		
Cisco DM Documentation (link to documentation set on www.cisco.com)	N/A	N/A
Cisco ACE Appliance Documentation (link to documentation set on www.cisco.com)	N/A	N/A
Cisco ACE Appliance Tools (link to the local ACE appliance toolpage)	N/A	N/A

