



CHAPTER 2

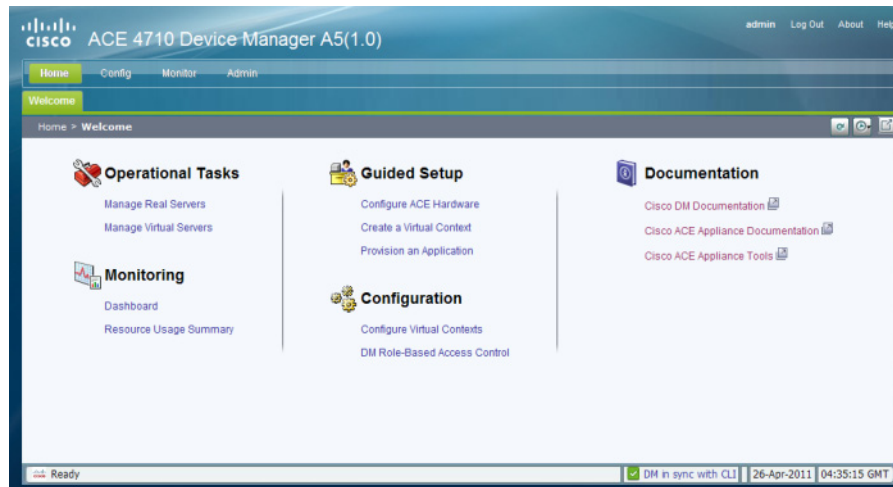
Using Homepage

Homepage is a launching point for quick access to selected areas within Cisco Device Manager (DM). It allows you to have quick access to the following operations and guided setup tasks in DM:

- Operational tasks that you can access:
 - The Real Servers table to view information for each configured real server, activate or suspend real servers listed in the table, or modify the server weight.
 - The Virtual Servers table to view information for each configured virtual server and to activate or suspend virtual servers listed in the table.
- Monitoring—View the system dashboard for health, usage, and performance information related to the ACE appliance, and system traffic resource usage.
- Guided setup tasks that you can launch:
 - The Cisco Application Control Engine (ACE) Hardware Setup task to configure ACE devices that are new to the network by establishing network connectivity in either standalone or high-availability (HA) deployments.
 - The Virtual Context Setup task to create and connect an ACE virtual context.
 - The Application Setup task to configure end-to-end load-balancing for your application.
- Configuration—Tasks that allow you to configure system attributes for a virtual context, and control a user's access to the ACE.
- Documentation—Quick links to DM and ACE appliance user documentation on www.cisco.com, and the local ACE appliance toolpage.

The DM Homepage (see [Figure 2-1](#)) is the first page that appears in DM after you log in.

Figure 2-1 Homepage Window



[Table 2-1](#) identifies the Homepage links, associated pages in DM, and related topics that can be found in this document.

Table 2-1 Homepage Links

Homepage Link	DM Page	Related Topics
Operational Tasks		
Manage Real Servers	Config > Operations > Real Servers	Managing Real Servers, page 6-9
Manage Virtual Servers	Config > Operations > Virtual Servers	Managing Virtual Servers, page 5-63
Monitoring		
Dashboard	Monitor > Virtual Contexts > Dashboard > System Dashboard	ACE System Dashboard, page 14-3
Resource Usage Summary	Monitor > Virtual Contexts > Resource Usage > Connections	Monitoring System Traffic Resource Usage, page 14-19
Guided Setup		
Configure ACE Hardware	Config > Guided Setup > ACE Hardware Setup	Using ACE Hardware Setup, page 3-3
Create a Virtual Context	Config > Guided Setup > Virtual Context Setup	Using Virtual Context Setup, page 3-7
Provision an Application	Config > Guided Setup > Application Setup	Using Application Setup, page 3-9
Configuration		
Configure Virtual Contexts	Config > Virtual Contexts	Configuring Virtual Context Primary Attributes, page 4-11
DM Role-Based Access Control	Adman > Role-Based Access Control > Users	Managing Users, page 15-7

Table 2-1 Homepage Links (continued)

Homepage Link	DM Page	Related Topics
Documentation		
Cisco DM Documentation (link to documentation set on www.cisco.com)	N/A	N/A
Cisco ACE Appliance Documentation (link to documentation set on www.cisco.com)	N/A	N/A
Cisco ACE Appliance Tools (link to the local ACE appliance toolpage)	N/A	N/A

