



Working with the User Interface

This module includes the following topics:

- [Accessing the Dynamic Menu Board, page 27](#)
- [Using the Themes Action Icons, page 28](#)
- [Selecting Themes, page 28](#)

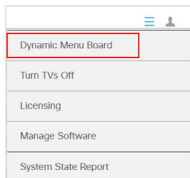
Accessing the Dynamic Menu Board

The DMB application is a custom application that is available once you log into Cisco Vision Director. Your Cisco Vision Director account is the same account that is used to authenticate access to the Dynamic Menu Board application using Role-Based Access Control. Your Cisco Vision Director account must be configured with the administrator or concessionaire role to access the DMB application.

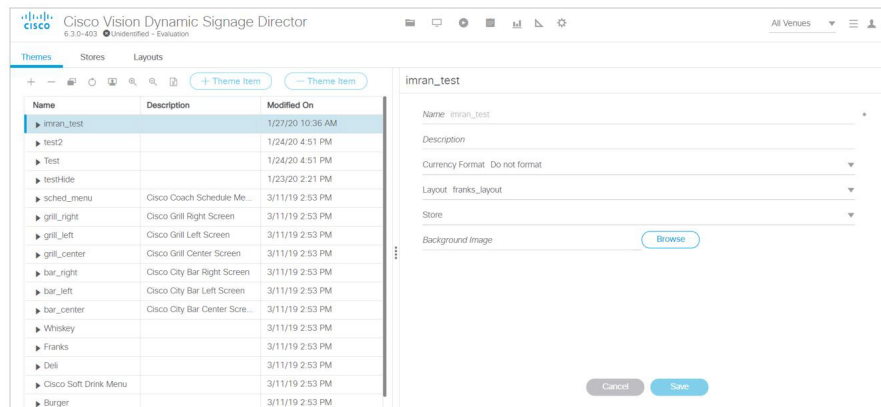
Accessing the Dynamic Menu Board from Cisco Vision Director

To access the Dynamic Menu Board application:

1. Log into Cisco Vision Director as an administrator or concessionaire.
2. Click **More > Dynamic Menu Board**.

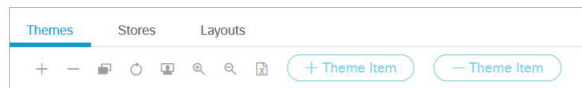


3. The DMB user interface opens ([Figure 1 on page 28](#)).

Figure 1 Dynamic Menu Board Interface in Cisco Vision Director

Using the Themes Action Icons

When you first log into the DMB application, the Themes screen displays. Hover over the icons for Tool Tips ([Figure 2 on page 28](#)).

Figure 2 Themes Action Icons

Expand the drop-down list box by clicking the arrows and opening the complete list of theme menu bar options.

Using the Themes Panel

The Themes panel includes three columns: Name, Description, and Modified On.

Sort: By default, the panel is sorted alphabetically by theme name. You also can sort by the date modified by clicking the arrow beside the "Modified On" heading. Reverse the date sort order by clicking the arrow again.

Adjust columns: You will likely need to adjust the width of the Themes panel columns to edit a menu theme, especially when modifying headers or adding items. Put your cursor over the vertical bar to the right of the column that you want to adjust, and drag the slider to the left or right.

Selecting Themes

The DMB user interface supports individual selection of themes for editing. Multi-selection and batch editing is not supported. Select a theme by clicking on the table row.

Editing Themes

In the Themes panel, you can display a theme hierarchy to show its columns, headers, and items all at once using the **Expand** action while the theme is selected. Or manually display the hierarchy by selecting the individual expansion arrows to the left of the theme name, column, and so on.

[Figure 3 on page 29](#) shows use of the **Expand** icon and the Burger theme fully expanded.

Figure 3 Fully Expanded Burger Theme

Name	Description	Modified On
Beer		9/6/18 4:00 AM
Burger		1/13/16 6:10 AM
▼ Burger_1		
▼ Sandwich and E...	Sandwich and Entree	
Grilled Chee...	Grilled Cheese	
Custom Grin...	Custom Grind Burger	
Chili Cheese...	Chili Cheese Fries	
Bacon and C...	Bacon and Cheddar Fries	
▼ Snacks	Snacks	
French Fries	French Fries	
Peanuts	Peanuts	
▼ burger_2		
▼ Beverages	Beverages	
Regular Sod...	Regular Soda Cup	
Souvenir So...	Souvenir Soda Cup	
Bottled Water	Bottled Water	

