



Managing Switch Data in Cisco Vision Director

This section includes the following topics:

- [Information About Importing Switch Data, page 235](#)
- [How to Import Switch Data to Cisco Vision Director, page 235](#)
- [Viewing Switch Details, page 240](#)

Information About Importing Switch Data

It is helpful to import switch data to Cisco Vision Director so that you can obtain certain switch-related information for your media player devices, and also run certain commands from the switch such as power resets of the media player using POE.

After you import switch data, information about the switch and its media player connections can be viewed in the following areas of the **Management Dashboard**:

- **Monitor and Status > All Devices > Settings**
- **Tools > Settings > Switch Management > View Switch Details**

How to Import Switch Data to Cisco Vision Director

This section includes the following topics:

- [Guidelines for Importing Switch Data, page 235](#)
- [Prerequisites for Importing Switch Data, page 236](#)
- [Configuring the Global Switch Device Default Settings, page 236](#)
- [Importing Switch Data, page 238](#)
- [Reimporting Switch Data, page 239](#)

Guidelines for Importing Switch Data

Before you import switch data to Cisco Vision Director, consider the following guidelines:

- Configure the Default Switch parameters area with the common credentials and connection type for all switches whose data you want to import to Cisco Vision Director. This will save you time when importing data from multiple switches.

- The following parameters can be configured as global defaults to connect to all Cisco Connected Stadium switches for data import:
 - Transport
 - User name
 - Password
 - Enable password
- You can override global defaults with a switch-specific transport protocol or user credentials at the time of switch import.

However, the switch-specific settings that you can specify on the Import Switch dialog box will only be used if you have changed the "Switch settings can override defaults?" option to yes in the global default settings.

- If you make any changes to your switch configuration, then you must re-import the switch data to reflect the latest port connections, or other updates.

Prerequisites for Importing Switch Data

Before you import switch data to Cisco Vision Director, be sure that the following conditions are met:

- You have installed and configured the Cisco Connected Stadium switch(es) for Cisco Vision Director.
- You have deployed the digital media players with connectivity to the switch.
- You have the following information for your switch connections:
 - Transport type (SSH is recommended)
 - User name
 - Password
 - Enable password
 - IP address of the switch

Note: Cisco Vision Director is only compatible with Cisco switches employing diffie-hellman-group1-sha1.

Configuring the Global Switch Device Default Settings

User Role: Administrator

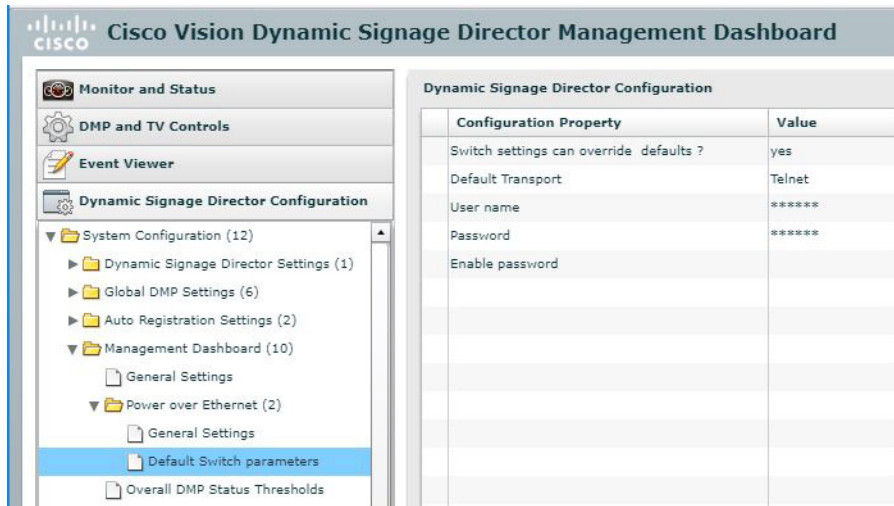
Use this task to set the common credentials and connection type for all switches whose data you want to import to Cisco Vision Director. This will save you time when importing data from multiple switches.

To configure global switch device default settings:

1. Go to **More > Management Dashboard > Dynamic Signage Director Configuration > System Configuration > Management Dashboard > Power over Ethernet > Default Switch parameters.**

[Figure 1 on page 237](#) shows the available configuration properties that can be specified as defaults for all imports of switch data to Cisco Vision Director.

Figure 1 Default Switch Parameters Properties



2. In the Default Switch configuration properties, type the default values that you want to set for all switch imports according to [Table 1 on page 238](#).

Table 1 Default Switch Configuration Property Descriptions

Property	Description
Switch settings can override defaults?	<p>no—Specifies that the values set in these default switch configuration properties cannot be overridden by transport, user name, or password values in the Import Switch settings area.</p> <p>yes—Specifies that these default settings for transport, user name and passwords can be overridden by values specified in the Import Switch settings at the time of import.</p>
Default Transport	<p>Default connection type to the switch as Telnet or SSH. For best security, use SSH.</p> <p>This value can be overridden in the Import Switch settings when the override option is set to yes.</p>
User Name	<p>Default user name on the switch.</p> <p>This value can be overridden in the Import Switch settings when the override option is set to yes.</p>
Password	<p>Default password for the user name on the switch.</p> <p>This value can be overridden in the Import Switch settings when the override option is set to yes.</p>
Enable password	<p>Default enable password on the switch.</p> <p>This value can be overridden in the Import Switch settings when the override option is set to yes.</p>

Importing Switch Data

User Role: Administrator

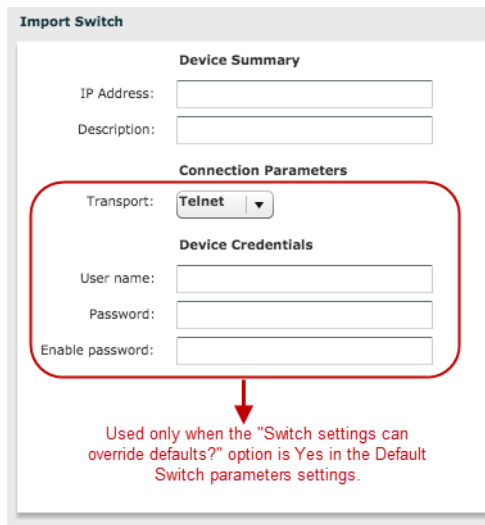
This task describes how to import Cisco Connected Stadium switch data so that you can manage your devices in the Management Dashboard.

IMPORTANT: If you make any changes to your switch configuration, then you must re-import the switch data to reflect the latest port connections, or other updates.

To import switch data:

1. Go to: **More > Management Dashboard > Tools** drawer > **Settings** tab > **Switch Management > Import Switch**. [Figure 2 on page 239](#) shows the Import Switch options.

Figure 2 Import Switch



Import Switch

Device Summary

IP Address:

Description:

Connection Parameters

Transport:

Device Credentials

User name:

Password:

Enable password:

Used only when the "Switch settings can override defaults?" option is Yes in the Default Switch parameters settings.

2. Specify the IP address of the switch that you want to import.
3. (Optional) Type a description for the switch.
4. (Optional) If you have enabled override of the default switch settings, specify the switch-specific connection parameters.
5. Click the Import Switch icon.

Reimporting Switch Data

User Role: Administrator

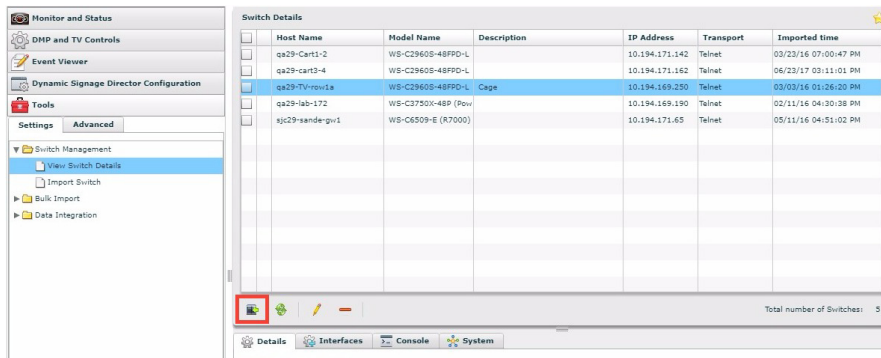
This task describes how to update Cisco Connected Stadium switch data in Cisco Vision Director after you have already done an initial import, but have made changes to your switch configuration—such as additions or moves of media players.

To reimport switch data:

1. Go to: **More > Management Dashboard > Tools** drawer > **Settings** tab > **Switch Management > View Switch Details**.
2. In the Switch Details box, select the switch that you want to update.
3. Click the reimport icon ([Figure 3 on page 240](#)).

Viewing Switch Details

Figure 3 Reimport Switch Data From View Switch Details



Viewing Switch Details

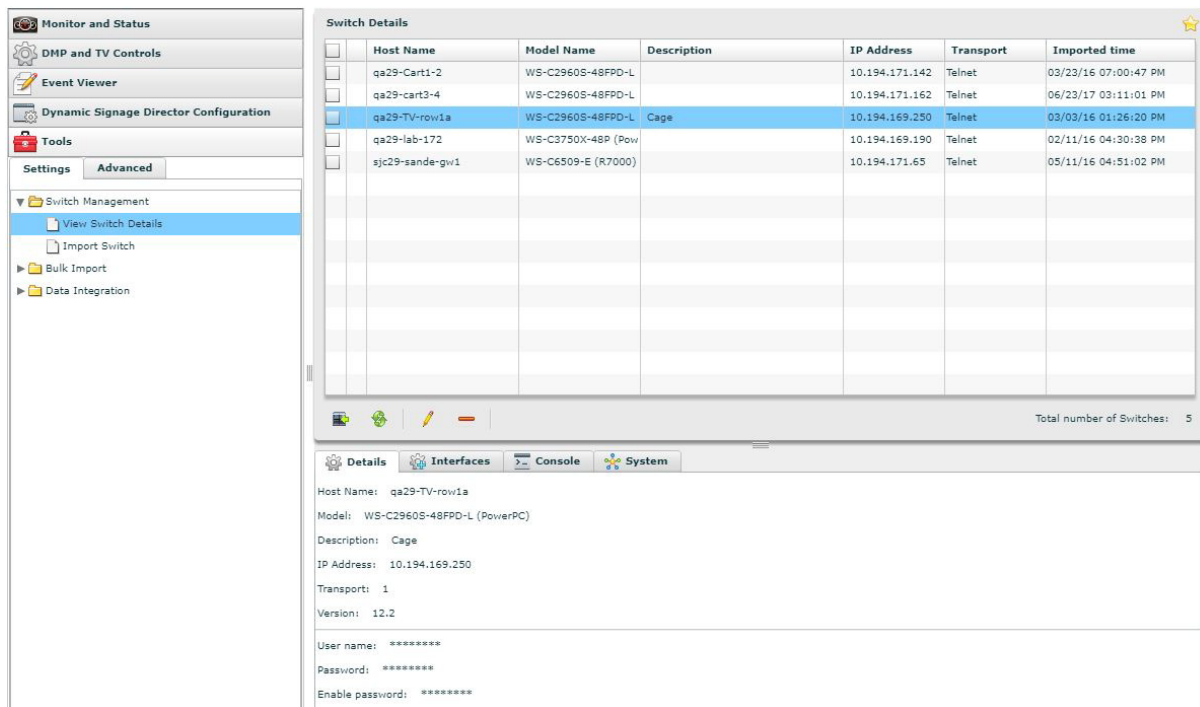
User Role: Administrator

To view switch details:

1. Go to: **More > Management Dashboard > Tools drawer > Settings tab > > Switch Management > View Switch Details.**

Figure 4 on page 240 shows the default switch details view that provides basic information about the switch itself.

Figure 4 View Switch Details



2. To get information about the media player device connections on the switch, click **Interfaces**.

Figure 5 on page 241 shows information about the media players connected to the switch, including addressing, VLAN and POE values.

Viewing Switch Details

Figure 5 Switch Details—Interfaces View

The screenshot displays the Cisco Vision Director interface. On the left is a navigation pane with sections like 'Monitor and Status', 'DMP and TV Controls', 'Event Viewer', 'Dynamic Signage Director Configuration', and 'Tools'. The 'Tools' section is expanded to show 'Settings' and 'Advanced'. Under 'Advanced', 'Switch Management' is expanded to show 'View Switch Details', 'Import Switch', 'Bulk Import', and 'Data Integration'. The main area is split into two views: 'Switch Details' and 'Interfaces'.

Switch Details Table:

Host Name	Model Name	Description	IP Address	Transport	Imported time
qa29-Cart1-2	WS-C2960S-48FPD-L		10.194.171.142	Telnet	03/23/16 07:00:47 PM
qa29-Cart3-4	WS-C2960S-48FPD-L		10.194.171.162	Telnet	06/23/17 03:11:01 PM
qa29-TV-row1a	WS-C2960S-48FPD-L	Cage	10.194.169.250	Telnet	03/03/16 01:26:20 PM
qa29-lab-172	WS-C3750X-48P (Pow		10.194.169.190	Telnet	02/11/16 04:30:38 PM
sjc29-sande-gvr1	WS-C6509-E (R7000)		10.194.171.65	Telnet	05/11/16 04:51:02 PM

Total number of Switches: 5

Interfaces Table:

Interface	IP Address	MAC	Vlan	Admin	Oper	Power	Connected DMP	Device Type
Gi1/0/36		00:22:bd:d3:5b:8a	225	auto	on	15.4		CVS-IPC-4500
Gi1/0/18				auto	off	0.0		n/a
Gi1/0/2				auto	off	0.0		n/a
Gi1/0/37		00:22:bd:d3:5b:97	225	auto	on	15.4		CVS-IPC-4500
Gi1/0/19				auto	off	0.0		n/a
Gi1/0/1				auto	off	0.0		n/a
Gi1/0/34				auto	on	13.0		CVS-IPC-4500
Gi1/0/16				auto	off	0.0		n/a
Gi1/0/35				auto	on	15.4		CVS-IPC-4500
Gi1/0/17				auto	off	0.0		n/a

